

12 Candlebark Court

SUBMITTED BY

Ray White Rockhampton Casey
stockers@cqoz.com

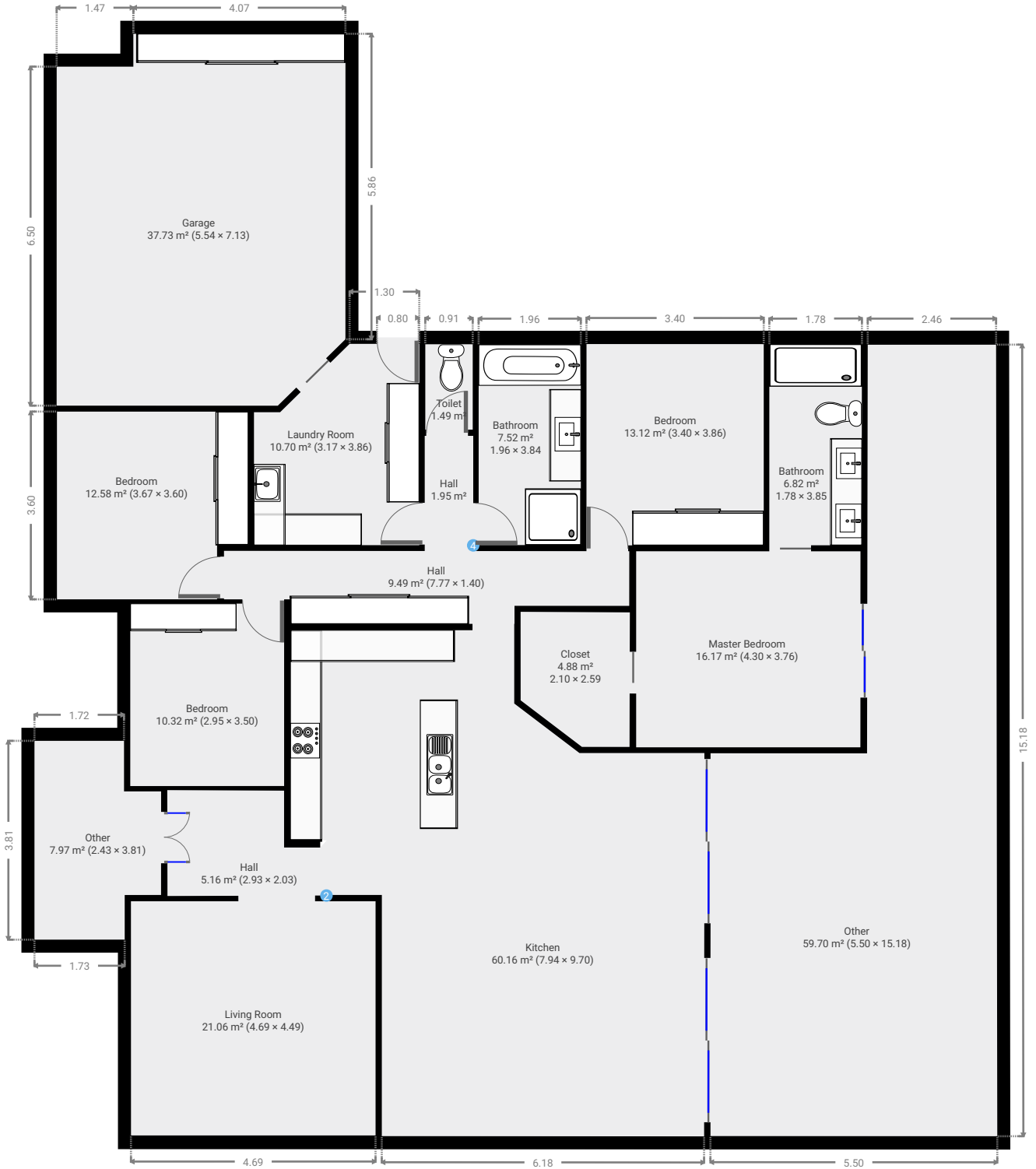
CREATED ON

2021-11-08

Floors

1

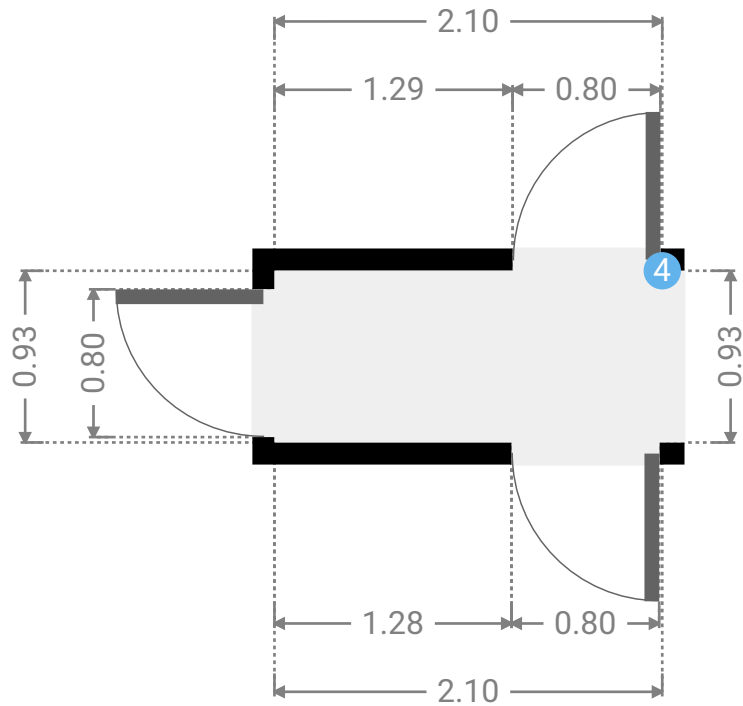
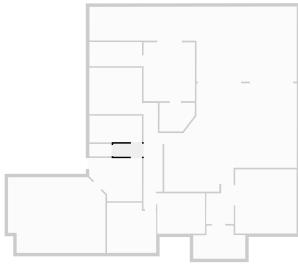
▼ Ground Floor



FLOORS: 1

▼ Hall Ground Floor

WIDTH: 2.10 m • LENGTH: 0.93 m
AREA: 1.95 m² • PERIMETER: 6.06 m



▼ Hall/Ground Floor

4 OPENING

Height
0.00 m



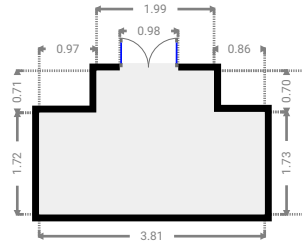
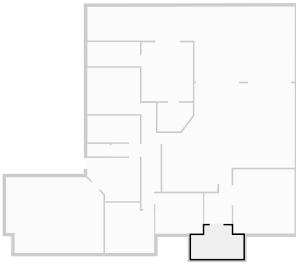
12 Candlebark Court

FLOORS: 1



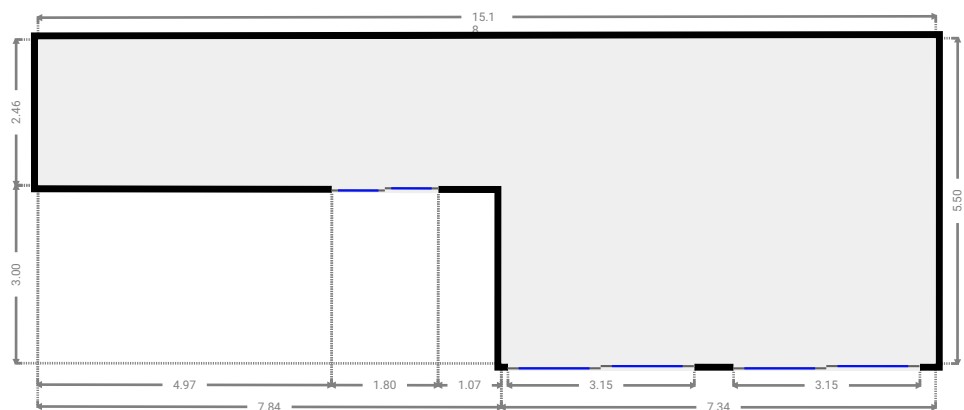
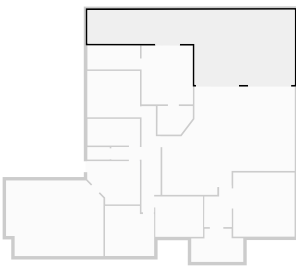
▼ Other Ground Floor

WIDTH: 3.81 m • LENGTH: 2.43 m
AREA: 7.97 m² • PERIMETER: 12.48 m



▼ Other Ground Floor

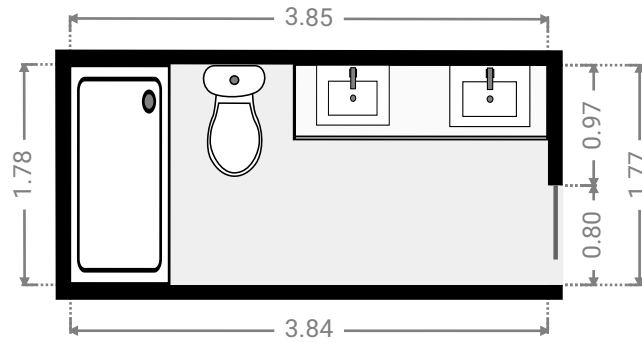
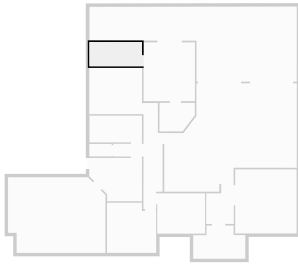
WIDTH: 15.18 m • LENGTH: 5.50 m
AREA: 59.70 m² • PERIMETER: 41.32 m



FLOORS: 1

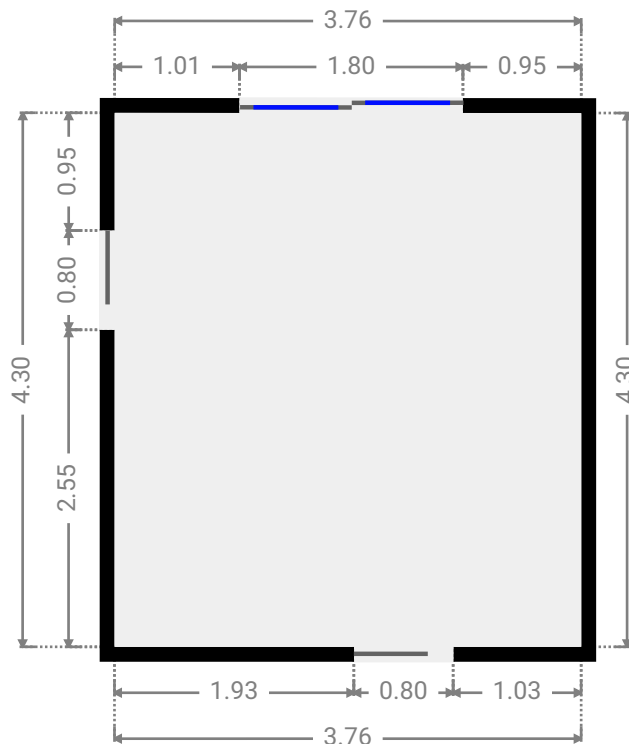
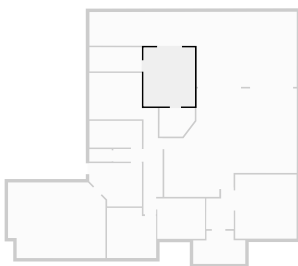
▼ Bathroom Ground Floor

WIDTH: 3.85 m • LENGTH: 1.78 m
AREA: 6.82 m² • PERIMETER: 11.24 m



▼ Master Bedroom Ground Floor

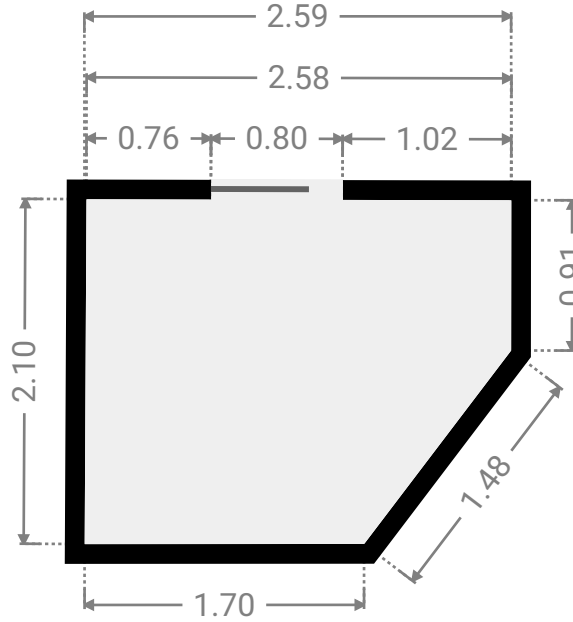
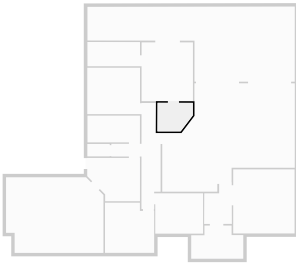
WIDTH: 3.76 m • LENGTH: 4.30 m
AREA: 16.17 m² • PERIMETER: 16.12 m



FLOORS: 1

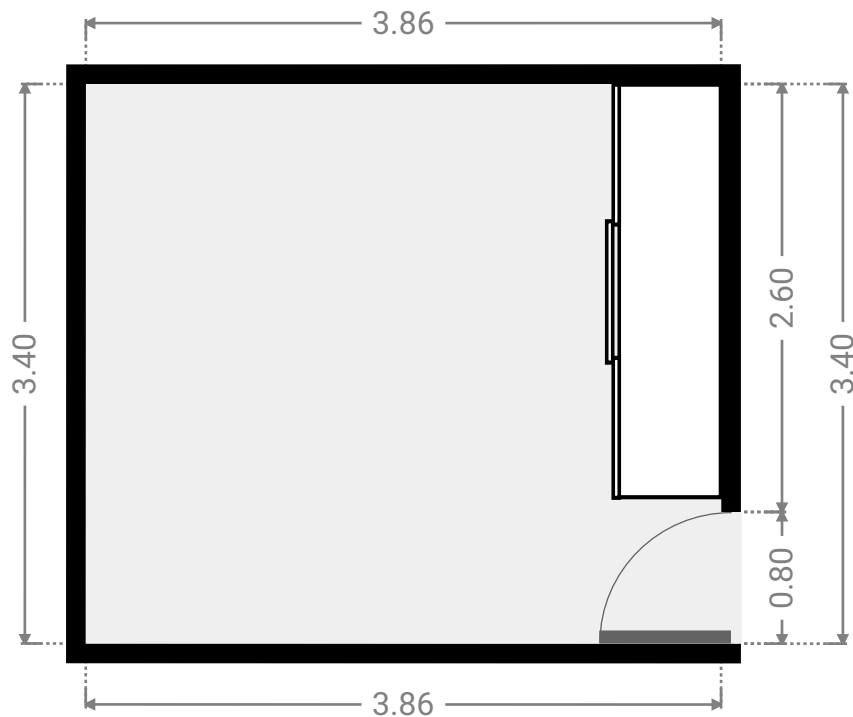
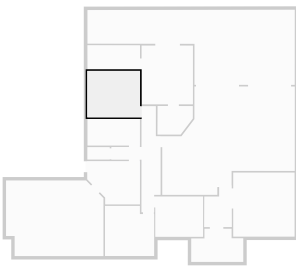
▼ **Closet**
Ground Floor

WIDTH: 2.59 m • LENGTH: 2.10 m
AREA: 4.88 m² • PERIMETER: 8.76 m



▼ **Bedroom**
Ground Floor

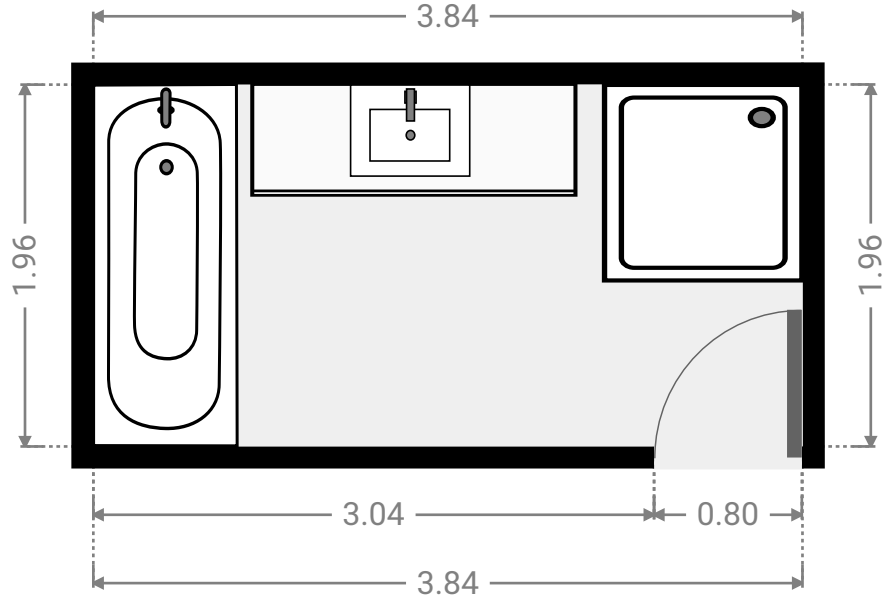
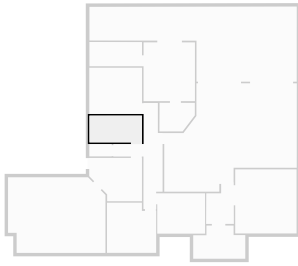
WIDTH: 3.86 m • LENGTH: 3.40 m
AREA: 13.12 m² • PERIMETER: 14.52 m



FLOORS: 1

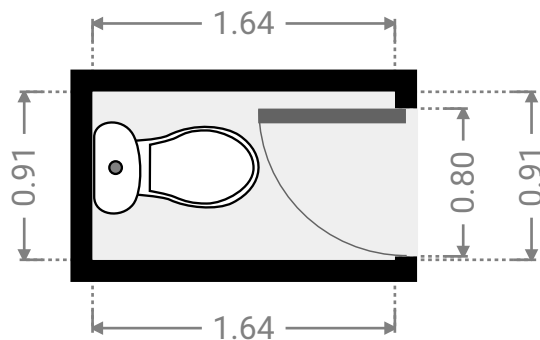
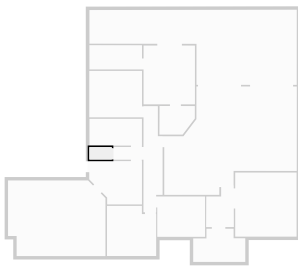
▼ Bathroom
Ground Floor

WIDTH: 3.84 m • LENGTH: 1.96 m
AREA: 7.52 m² • PERIMETER: 11.60 m



▼ Toilet
Ground Floor

WIDTH: 1.64 m • LENGTH: 0.91 m
AREA: 1.49 m² • PERIMETER: 5.09 m



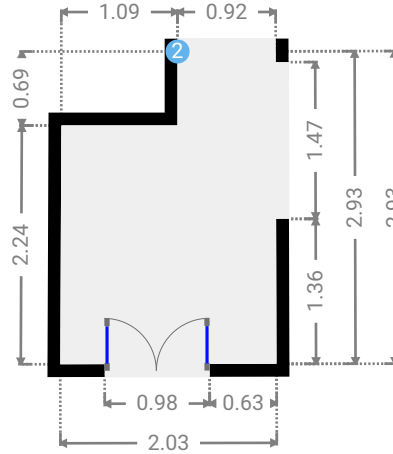
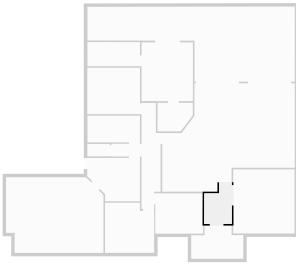
12 Candlebark Court

FLOORS: 1



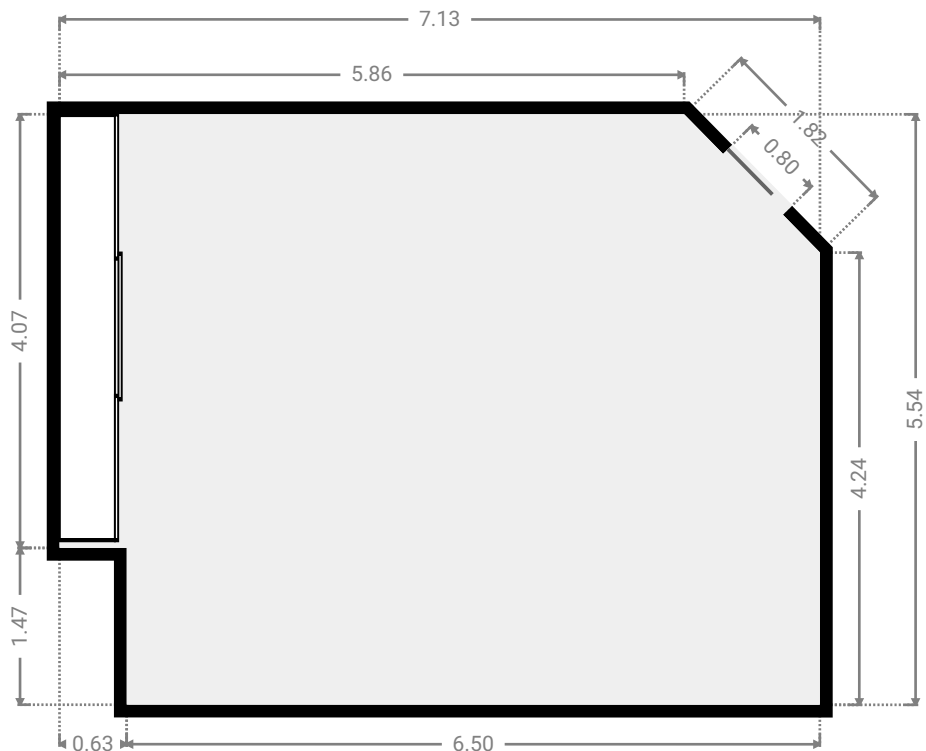
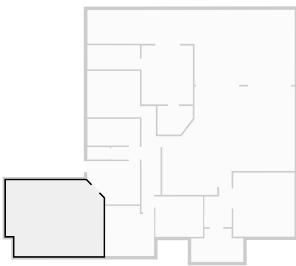
▼ Hall Ground Floor

WIDTH: 2.03 m • LENGTH: 2.93 m
AREA: 5.16 m² • PERIMETER: 9.90 m

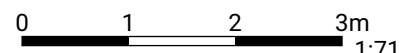


▼ Garage Ground Floor

WIDTH: 7.13 m • LENGTH: 5.54 m
AREA: 37.73 m² • PERIMETER: 24.58 m



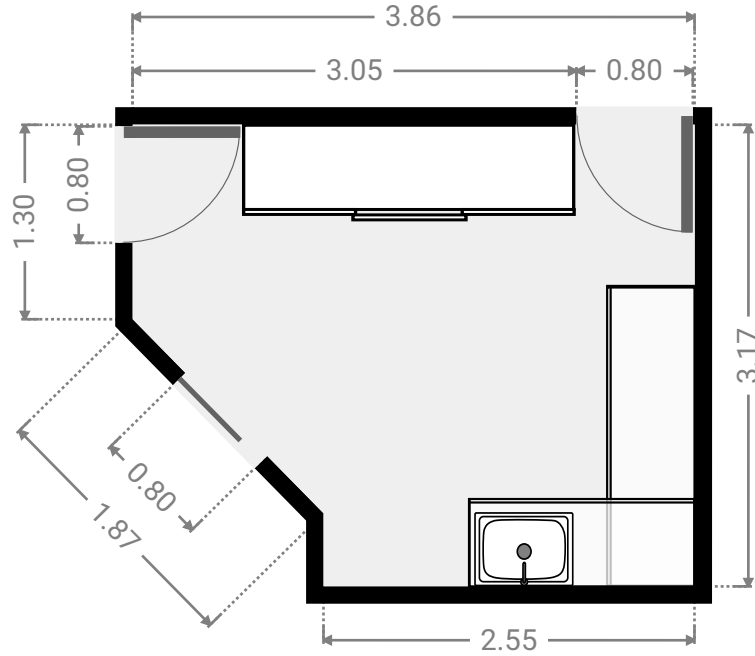
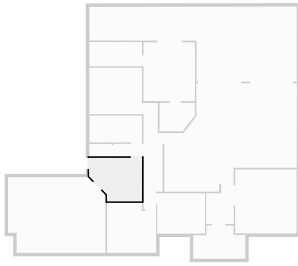
THIS FLOORPLAN IS PROVIDED WITHOUT WARRANTY OF ANY KIND. SENSOPIA DISCLAIMS ANY WARRANTY INCLUDING, WITHOUT LIMITATION, SATISFACTORY QUALITY OR ACCURACY OF DIMENSIONS.



FLOORS: 1

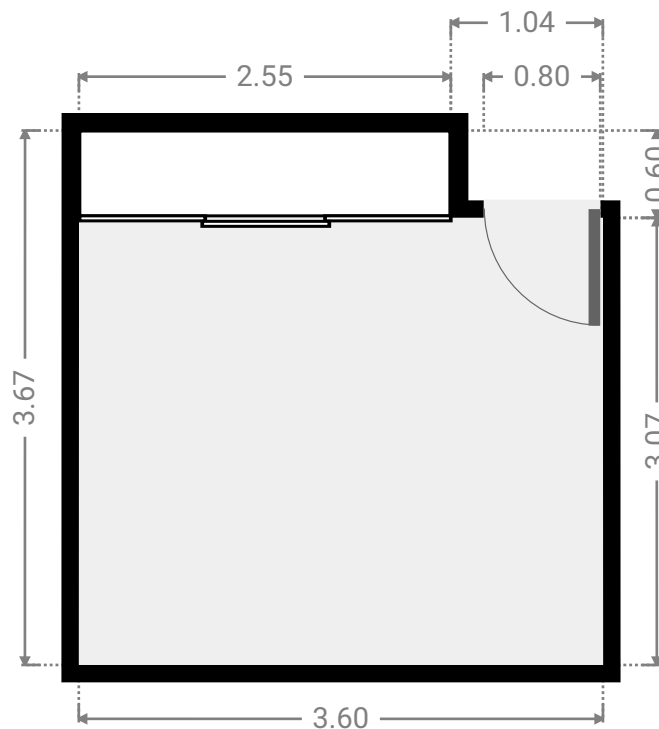
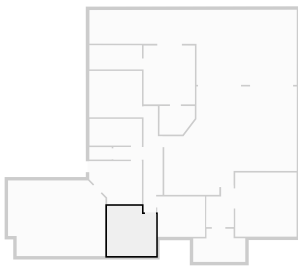
▼ **Laundry Room**
Ground Floor

WIDTH: 3.86 m • LENGTH: 3.17 m
AREA: 10.70 m² • PERIMETER: 13.28 m



▼ **Bedroom**
Ground Floor

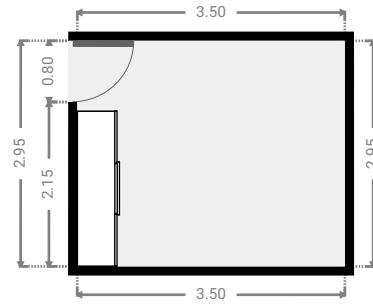
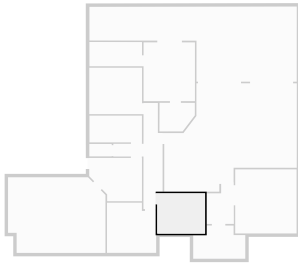
WIDTH: 3.60 m • LENGTH: 3.67 m
AREA: 12.58 m² • PERIMETER: 14.54 m



FLOORS: 1

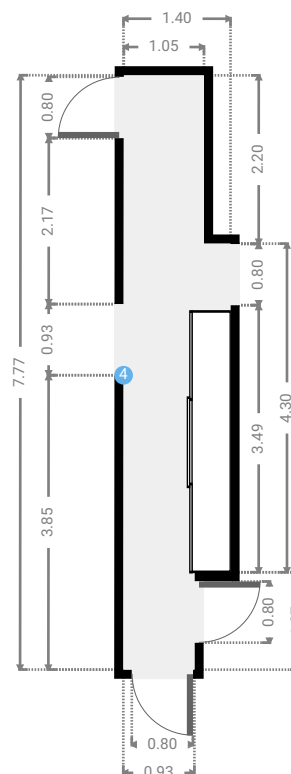
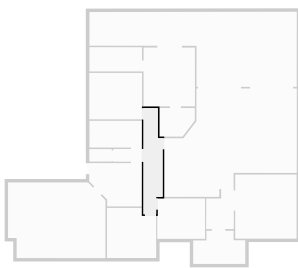
▼ Bedroom Ground Floor

WIDTH: 3.50 m • LENGTH: 2.95 m
AREA: 10.32 m² • PERIMETER: 12.90 m



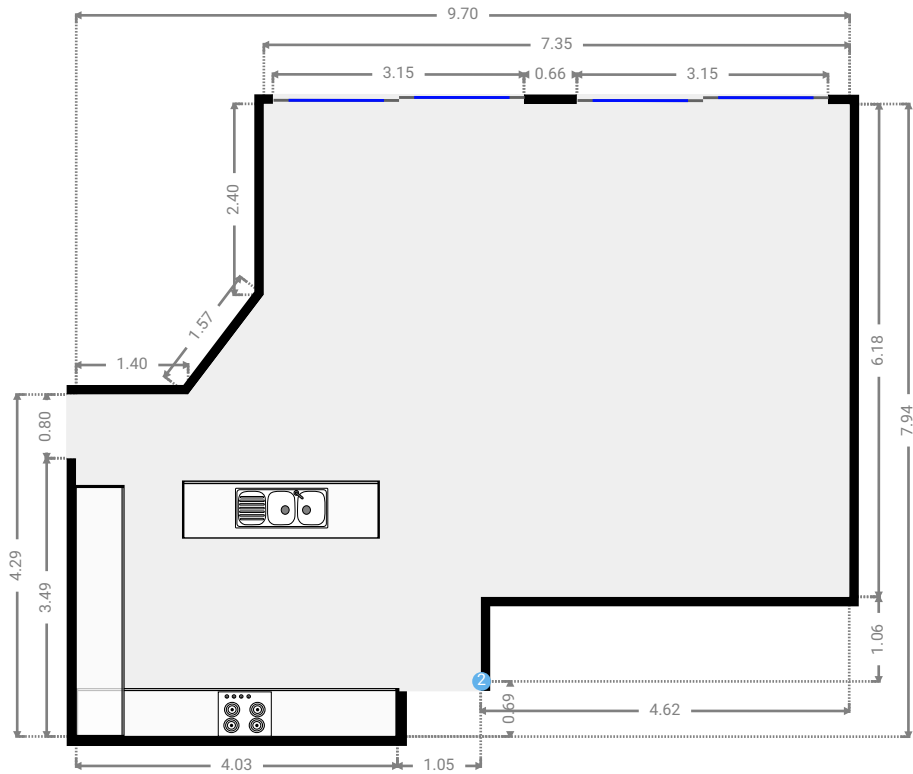
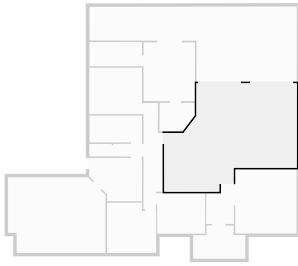
▼ Hall Ground Floor

WIDTH: 1.40 m • LENGTH: 7.77 m
AREA: 9.49 m² • PERIMETER: 18.33 m



▼ Kitchen Ground Floor

WIDTH: 9.70 m • LENGTH: 7.94 m
AREA: 60.16 m² • PERIMETER: 34.64 m



▼ Kitchen/Ground Floor

2 OPENING

Height
0.00 m



▼ Living Room Ground Floor

WIDTH: 4.49 m • LENGTH: 4.69 m
AREA: 21.06 m² • PERIMETER: 18.36 m

