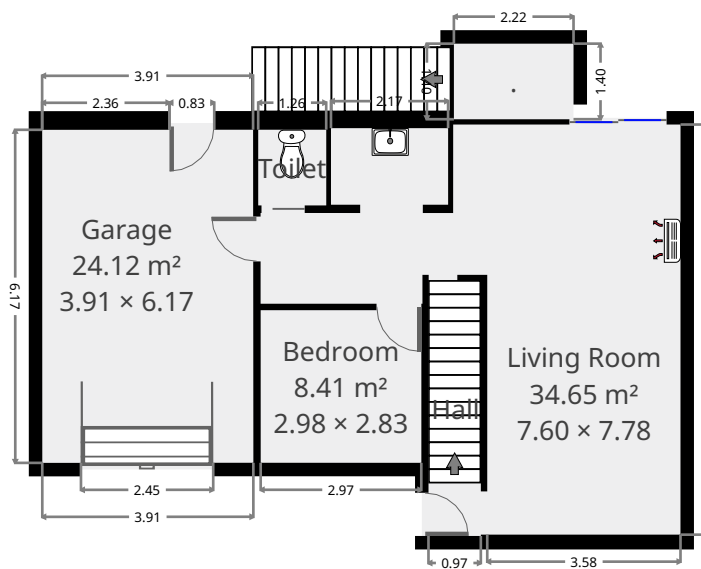
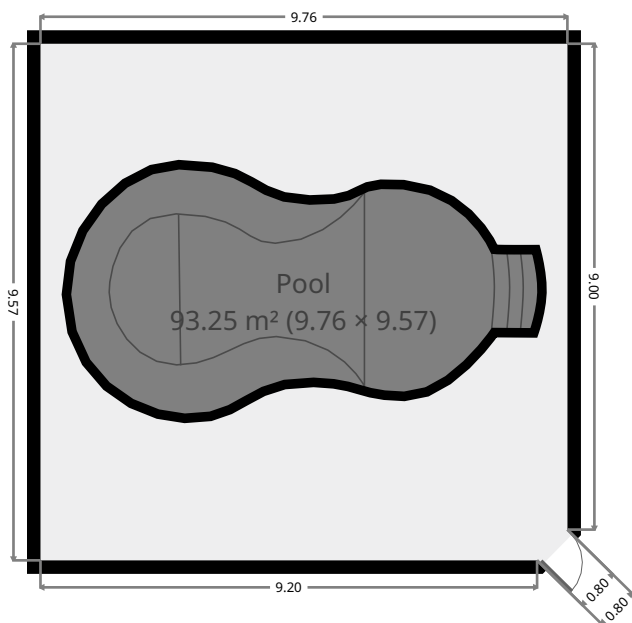


12 Bramble Street

Ground Floor



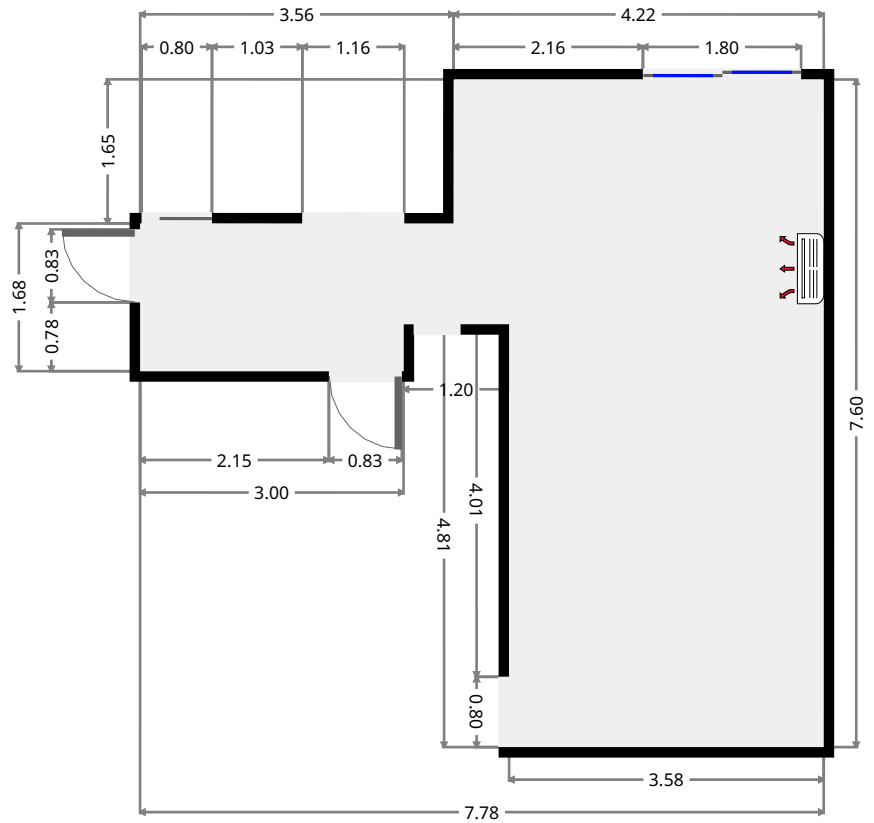
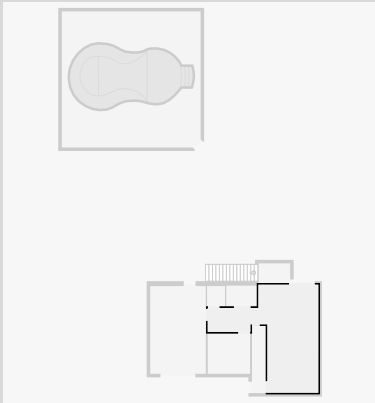
THIS FLOORPLAN IS PROVIDED WITHOUT WARRANTY OF ANY KIND. SENSOPIA DISCLAIMS ANY WARRANTY INCLUDING, WITHOUT LIMITATION, SATISFACTORY QUALITY OR ACCURACY OF DIMENSIONS.



12 Bramble Street

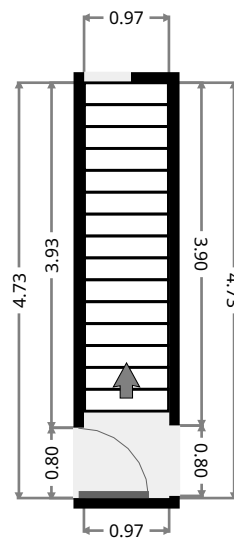
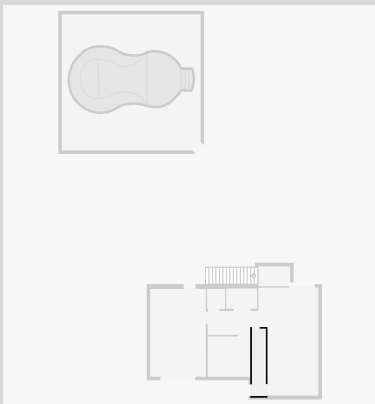
Living Room

Width: 7.60 m
 Length: 7.78 m
 Area: 34.65 m²
 Perimeter: 31.82 m



Hall

Width: 0.97 m
 Length: 4.73 m
 Area: 4.57 m²
 Perimeter: 11.39 m

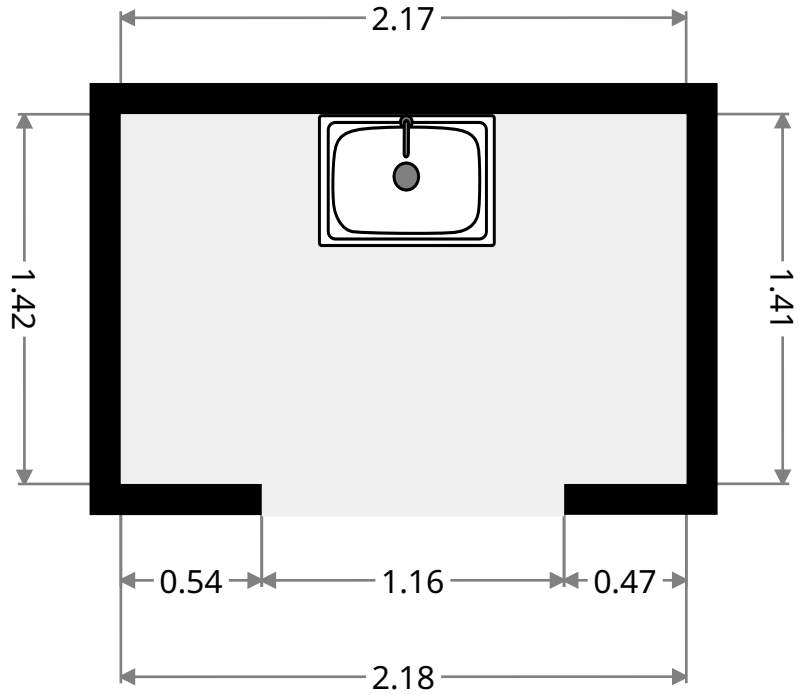
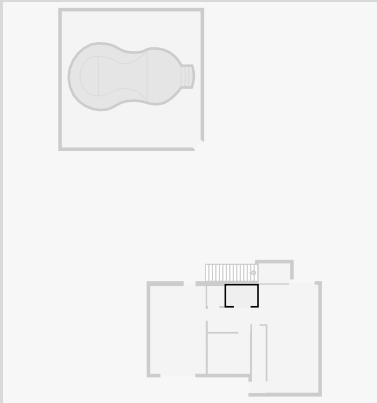


THIS FLOORPLAN IS PROVIDED WITHOUT WARRANTY OF ANY KIND. SENSOPIA DISCLAIMS ANY WARRANTY INCLUDING, WITHOUT LIMITATION, SATISFACTORY QUALITY OR ACCURACY OF DIMENSIONS.

12 Bramble Street

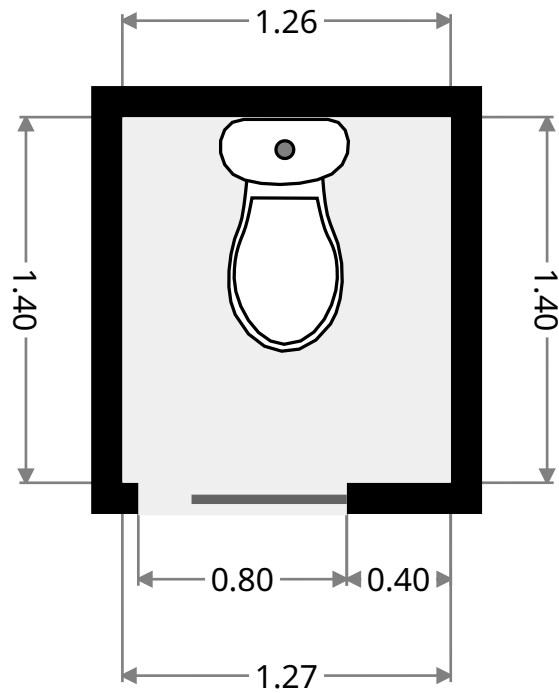
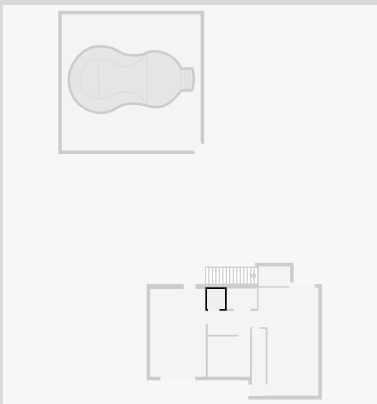
Laundry Room

Width: 1.41 m
Length: 2.17 m
Area: 3.08 m²
Perimeter: 7.18 m



Toilet / Half Bath

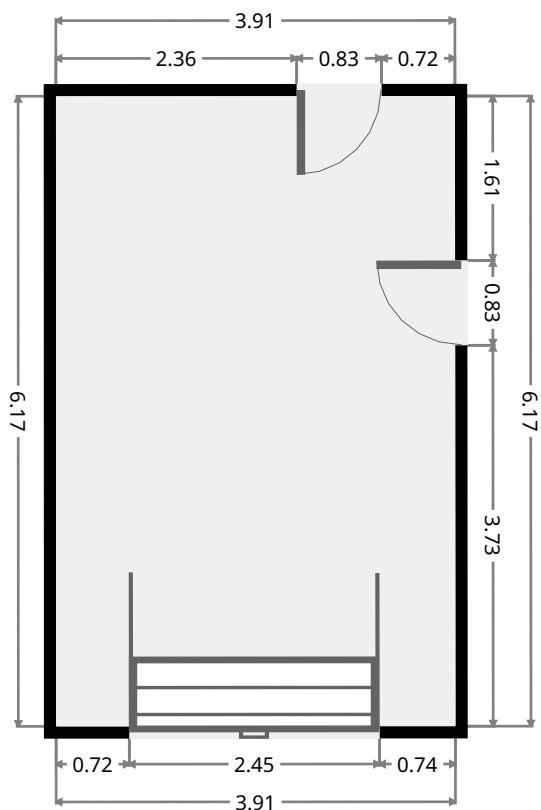
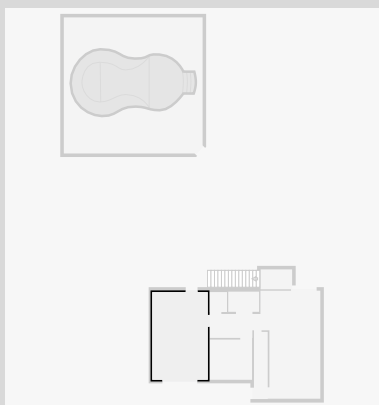
Width: 1.26 m
Length: 1.40 m
Area: 1.77 m²
Perimeter: 5.33 m



12 Bramble Street

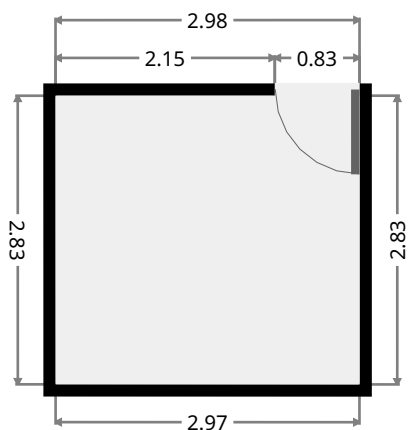
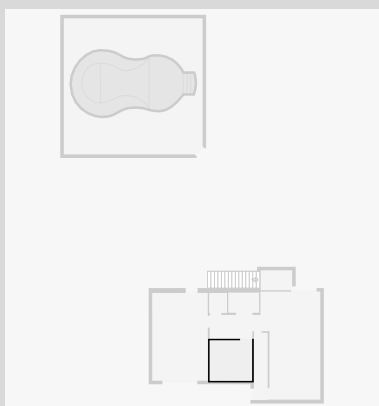
Garage

Width: 3.91 m
 Length: 6.17 m
 Area: 24.12 m²
 Perimeter: 20.16 m

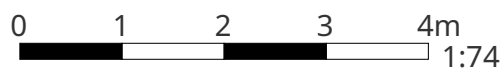


Bedroom

Width: 2.83 m
 Length: 2.98 m
 Area: 8.41 m²
 Perimeter: 11.61 m



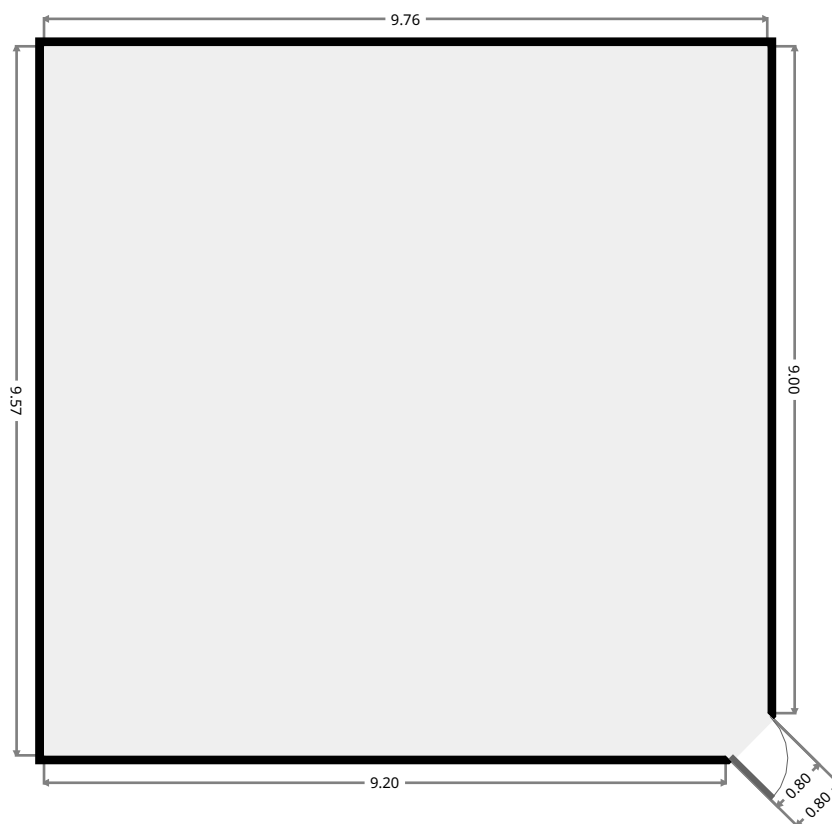
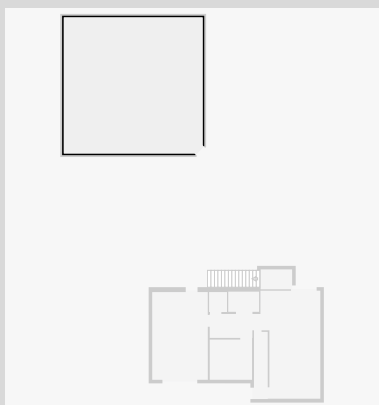
THIS FLOORPLAN IS PROVIDED WITHOUT WARRANTY OF ANY KIND. SENSOPIA DISCLAIMS ANY WARRANTY INCLUDING, WITHOUT LIMITATION, SATISFACTORY QUALITY OR ACCURACY OF DIMENSIONS.



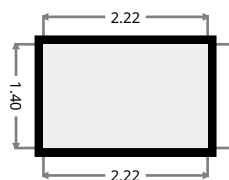
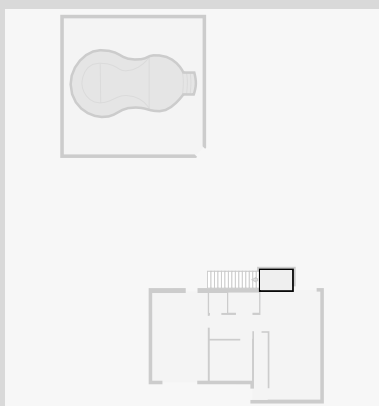
12 Bramble Street

Pool

Width: 9.57 m
Length: 9.76 m
Area: 93.25 m²
Perimeter: 38.33 m

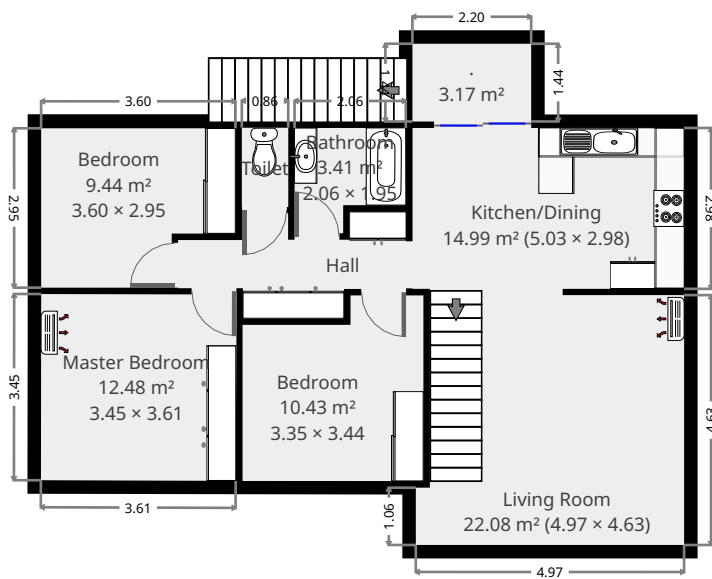


•
Width: 1.40 m
Length: 2.22 m
Area: 3.10 m²
Perimeter: 7.23 m



12 Bramble Street

1st Floor



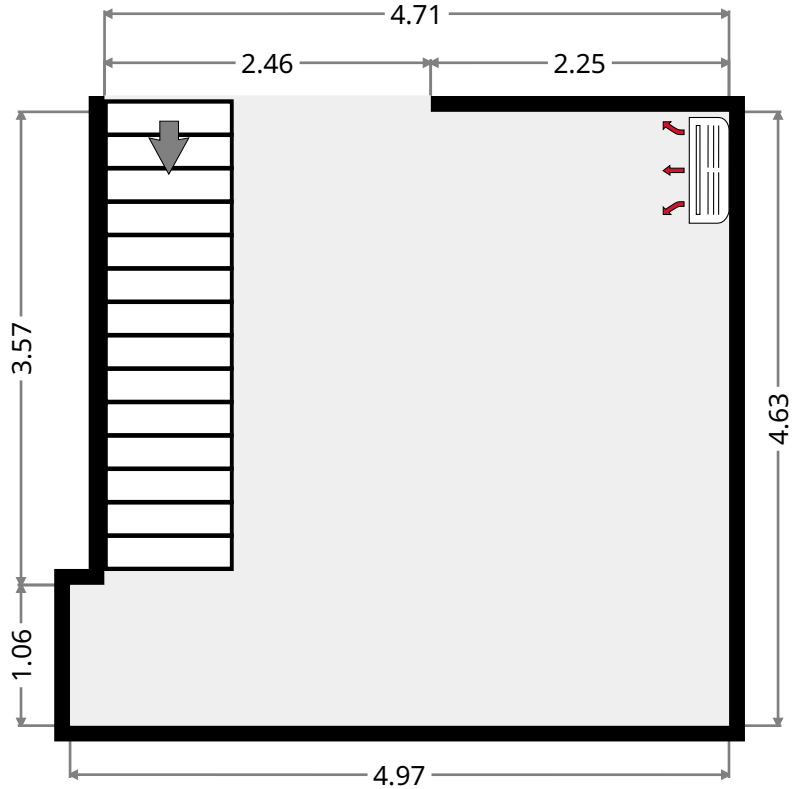
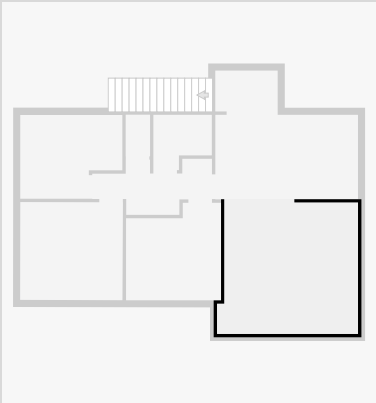
THIS FLOORPLAN IS PROVIDED WITHOUT WARRANTY OF ANY KIND. SENSOPIA DISCLAIMS ANY WARRANTY INCLUDING, WITHOUT LIMITATION, SATISFACTORY QUALITY OR ACCURACY OF DIMENSIONS.



12 Bramble Street

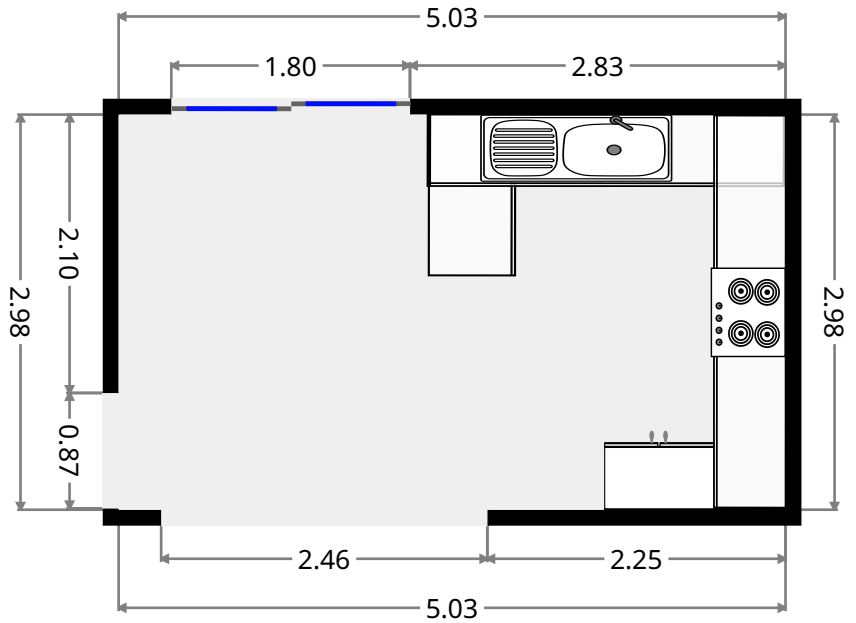
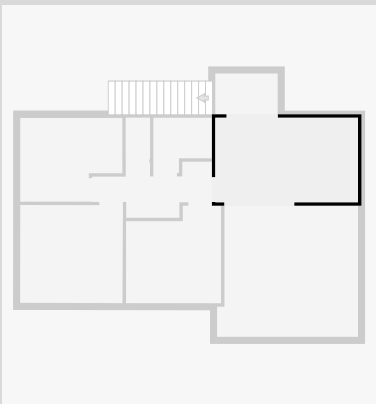
Living Room

Width: 4.63 m
 Length: 4.97 m
 Area: 22.08 m²
 Perimeter: 19.20 m

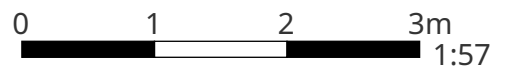


Kitchen/Dining

Width: 2.98 m
 Length: 5.03 m
 Area: 14.99 m²
 Perimeter: 16.02 m



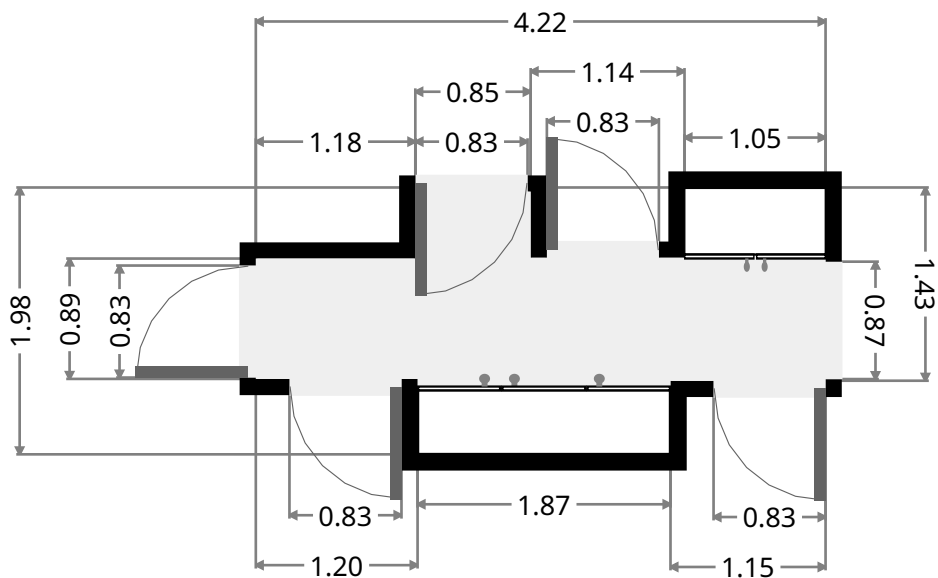
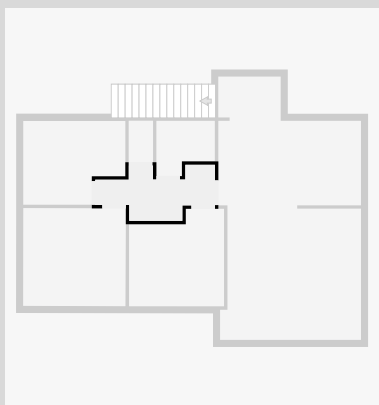
THIS FLOORPLAN IS PROVIDED WITHOUT WARRANTY OF ANY KIND. SENSOPIA DISCLAIMS ANY WARRANTY INCLUDING, WITHOUT LIMITATION, SATISFACTORY QUALITY OR ACCURACY OF DIMENSIONS.



12 Bramble Street

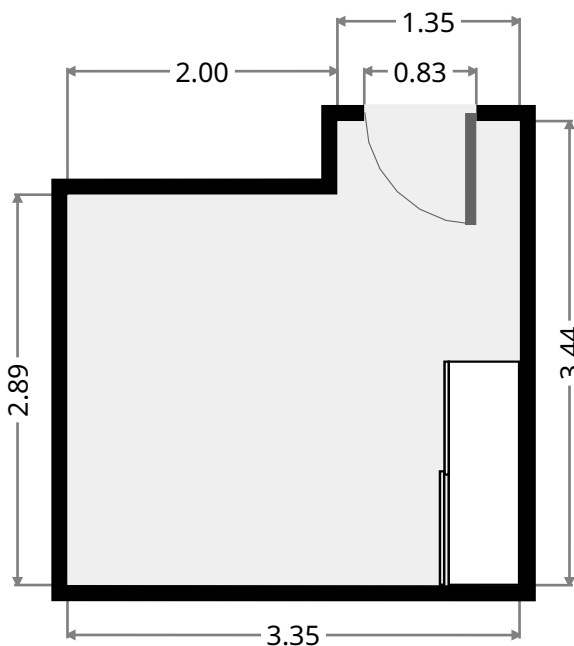
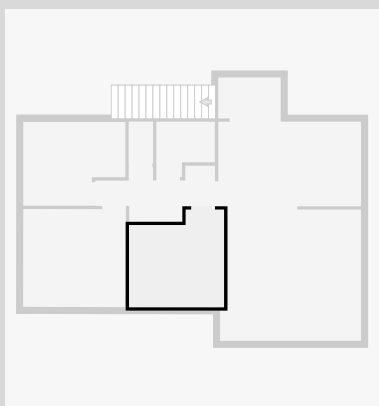
Hall

Width: 1.98 m
 Length: 4.22 m
 Area: 5.81 m²
 Perimeter: 13.38 m

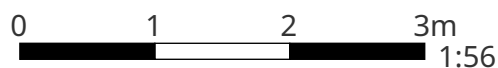


Bedroom

Width: 3.35 m
 Length: 3.44 m
 Area: 10.43 m²
 Perimeter: 13.58 m



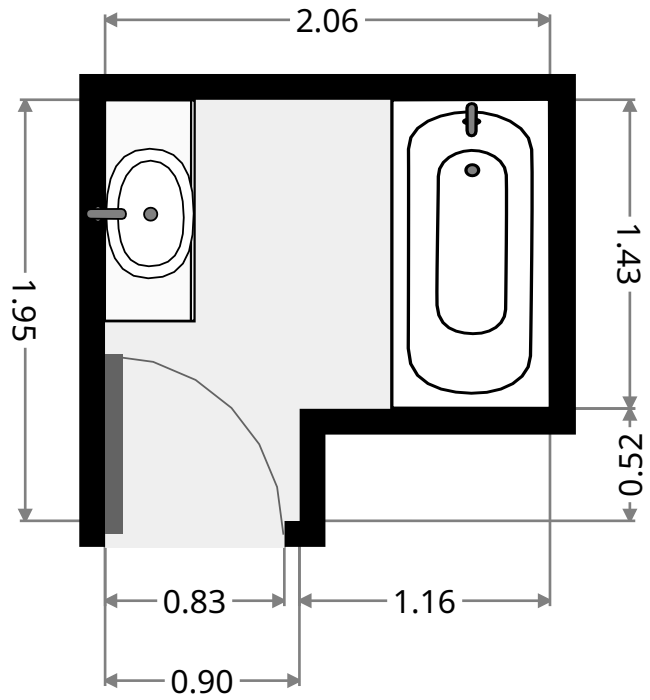
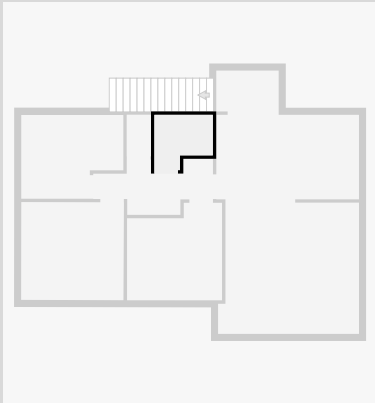
THIS FLOORPLAN IS PROVIDED WITHOUT WARRANTY OF ANY KIND. SENSOPIA DISCLAIMS ANY WARRANTY INCLUDING, WITHOUT LIMITATION, SATISFACTORY QUALITY OR ACCURACY OF DIMENSIONS.



12 Bramble Street

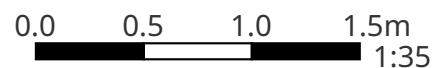
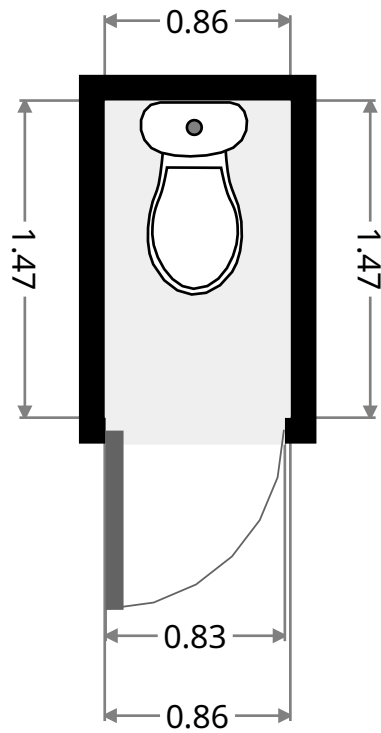
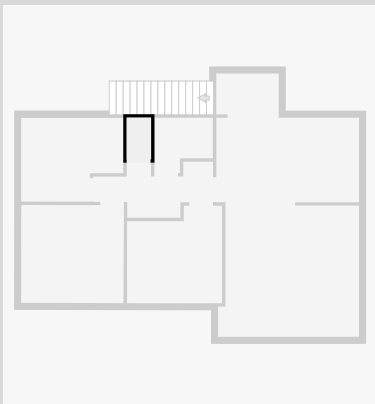
Bathroom

Width: 1.95 m
Length: 2.06 m
Area: 3.41 m²
Perimeter: 8.02 m



Toilet / Half Bath

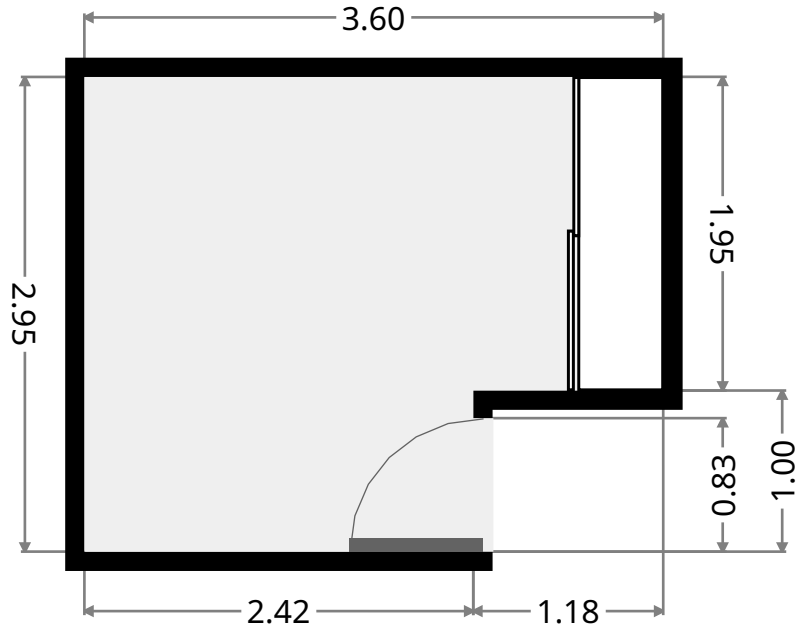
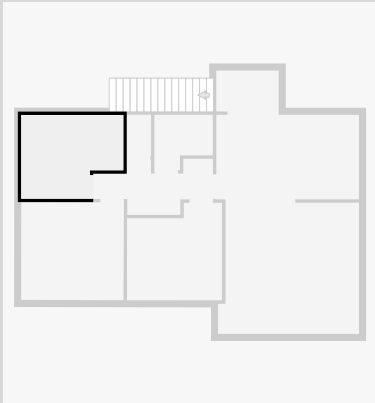
Width: 0.86 m
Length: 1.47 m
Area: 1.26 m²
Perimeter: 4.66 m



12 Bramble Street

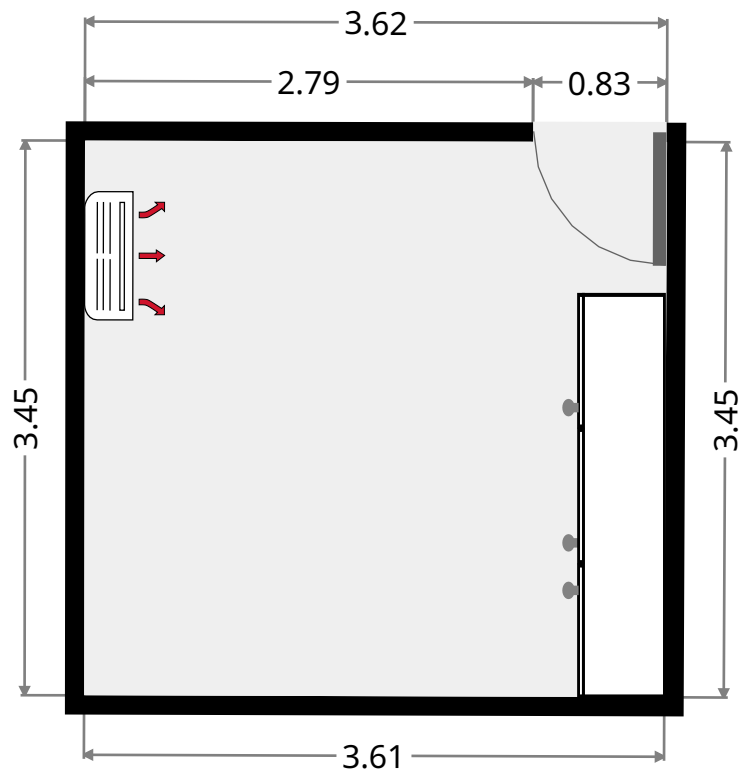
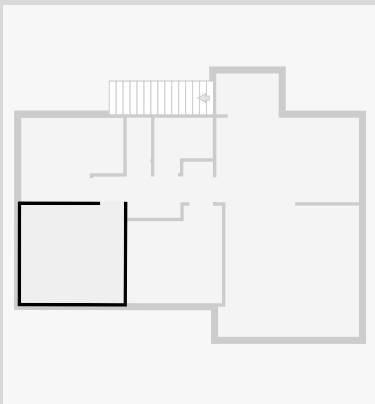
Bedroom

Width: 2.95 m
 Length: 3.60 m
 Area: 9.44 m²
 Perimeter: 13.10 m



Master Bedroom

Width: 3.45 m
 Length: 3.61 m
 Area: 12.48 m²
 Perimeter: 14.13 m



12 Bramble Street

•
Width: 1.44 m
Length: 2.20 m
Area: 3.17 m²
Perimeter: 7.28 m

