

12/93-95 pennycuick street

Created on
2021-08-03

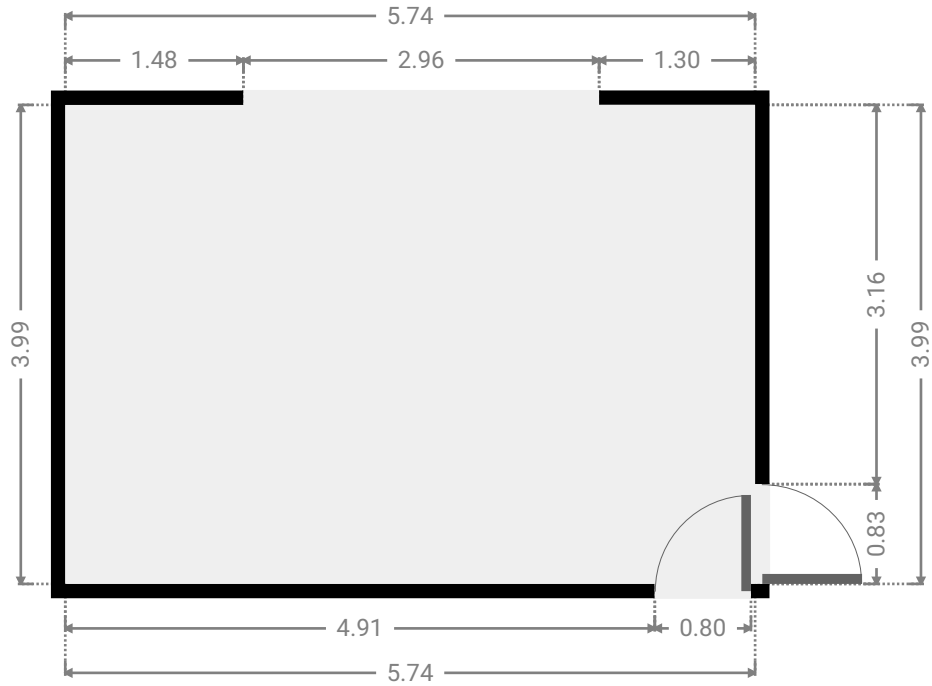
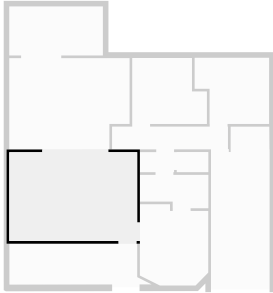
Floors
1

▼ Ground Floor



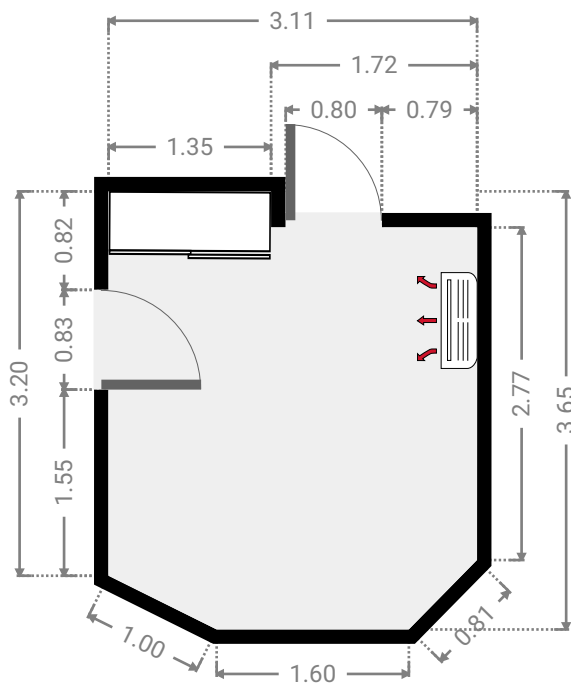
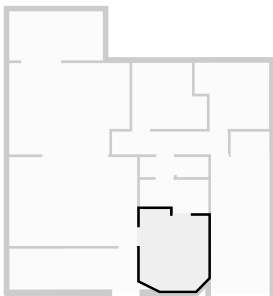
▼ **Living Room**
Ground Floor

WIDTH: 5.74 m • LENGTH: 3.99 m
AREA: 22.88 m² • PERIMETER: 19.45 m



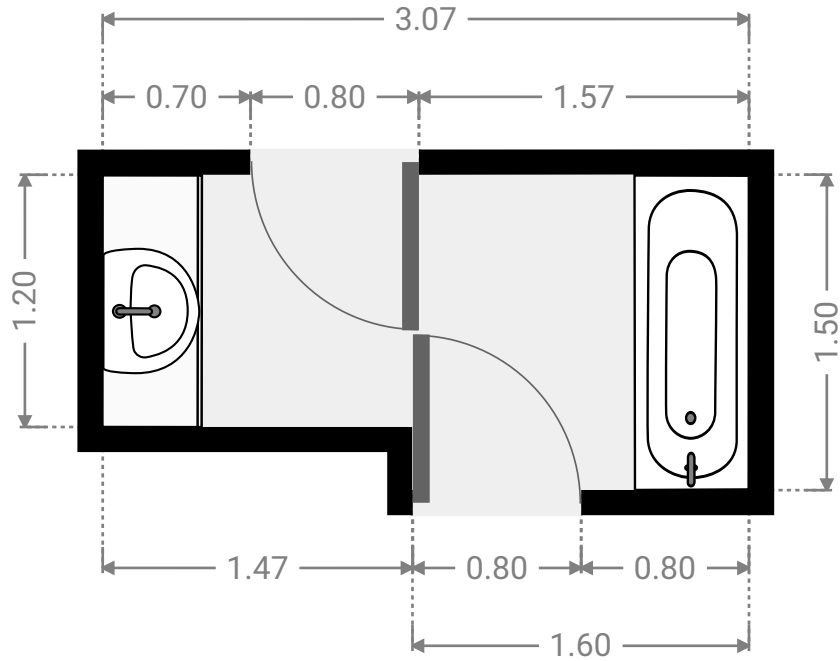
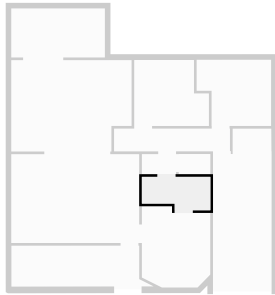
▼ **Master Bedroom**
Ground Floor

WIDTH: 3.11 m • LENGTH: 3.65 m
AREA: 10.30 m² • PERIMETER: 12.75 m



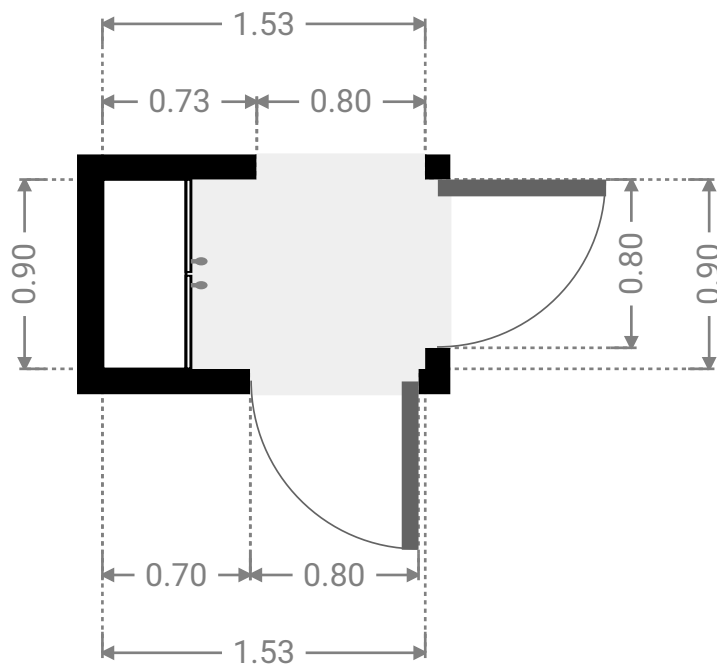
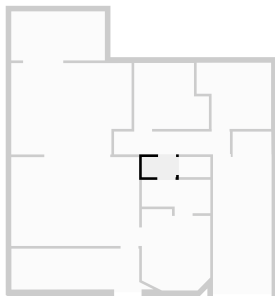
▼ **Bathroom**
Ground Floor

WIDTH: 3.07 m • LENGTH: 1.50 m
AREA: 4.17 m² • PERIMETER: 9.15 m



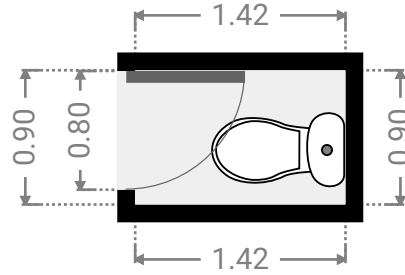
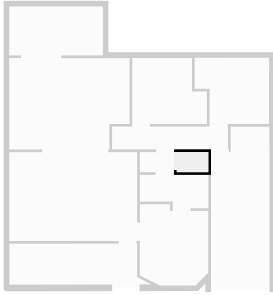
▼ **Hall**
Ground Floor

WIDTH: 1.53 m • LENGTH: 0.90 m
AREA: 1.38 m² • PERIMETER: 4.87 m



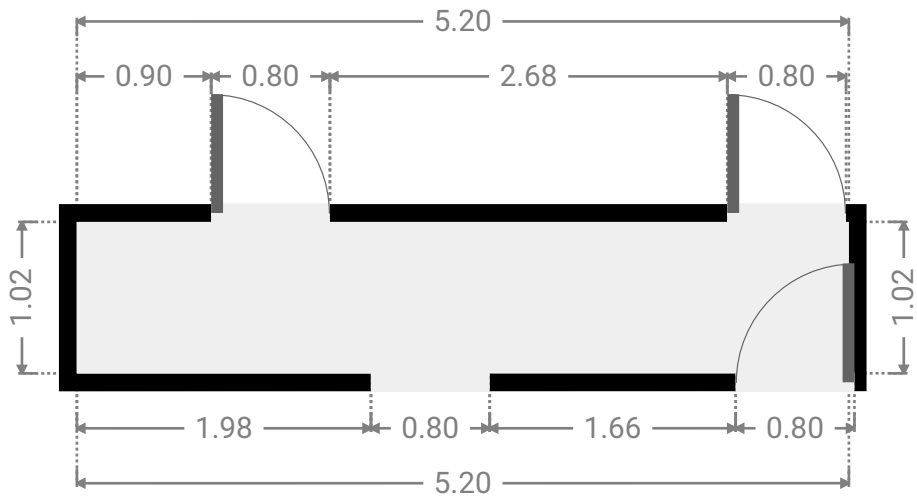
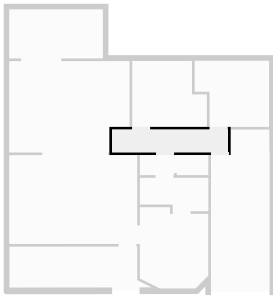
▼ **Toilet**
Ground Floor

WIDTH: 1.42 m • LENGTH: 0.90 m
AREA: 1.28 m² • PERIMETER: 4.64 m



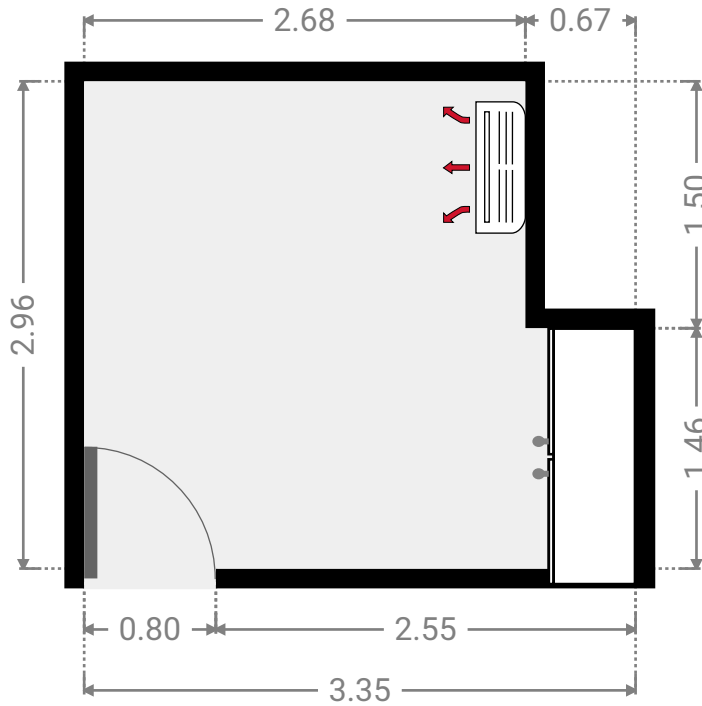
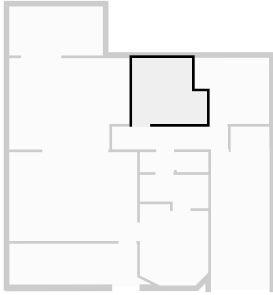
▼ **Hall**
Ground Floor

WIDTH: 5.20 m • LENGTH: 1.02 m
AREA: 5.30 m² • PERIMETER: 12.44 m



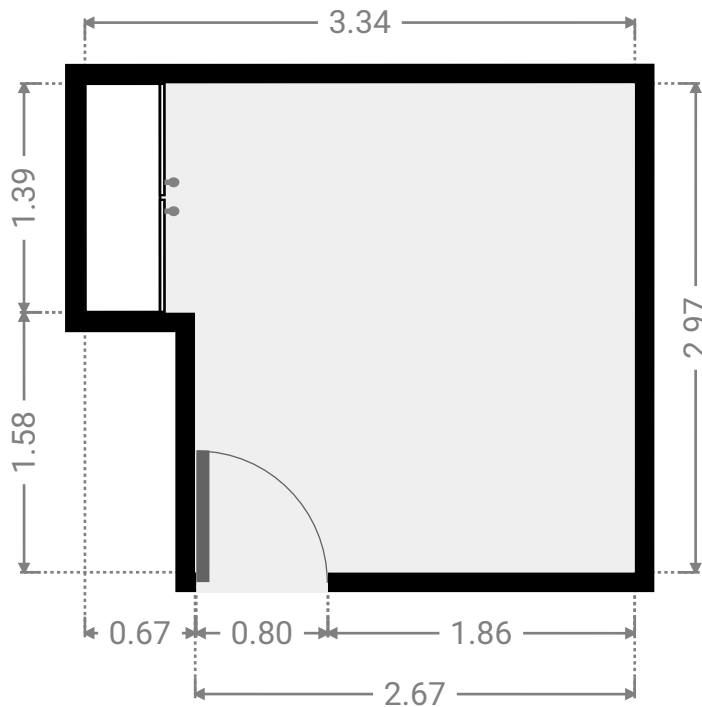
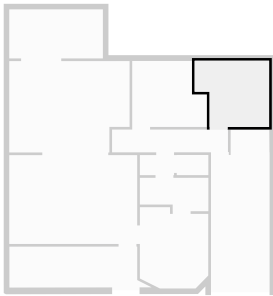
▼ **Bedroom**
Ground Floor

WIDTH: 3.35 m • LENGTH: 2.96 m
AREA: 8.91 m² • PERIMETER: 12.62 m



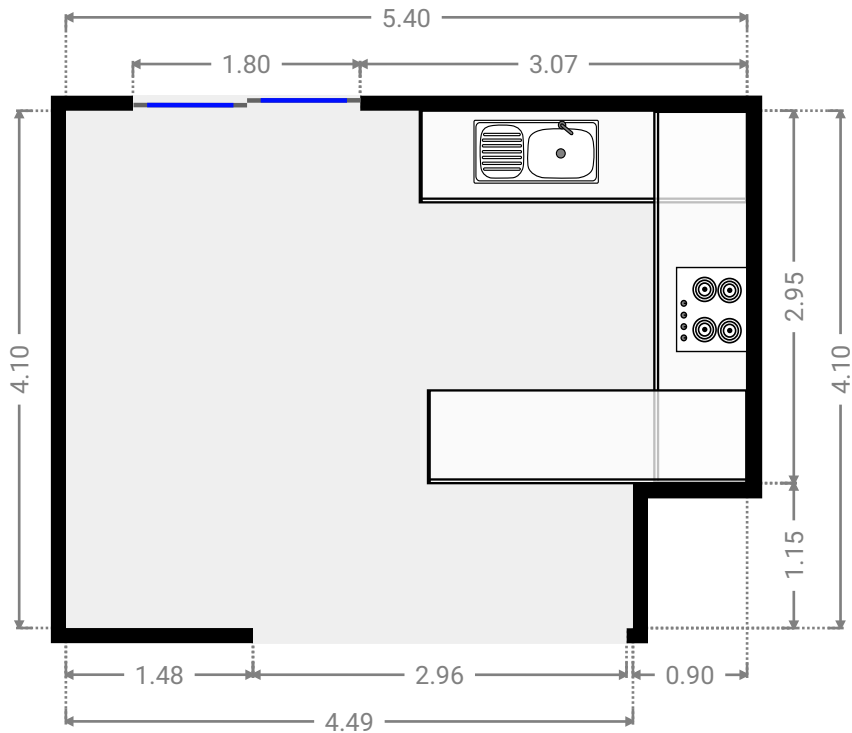
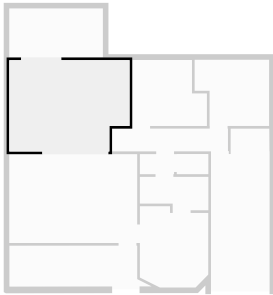
▼ **Bedroom**
Ground Floor

WIDTH: 3.34 m • LENGTH: 2.97 m
AREA: 8.86 m² • PERIMETER: 12.62 m



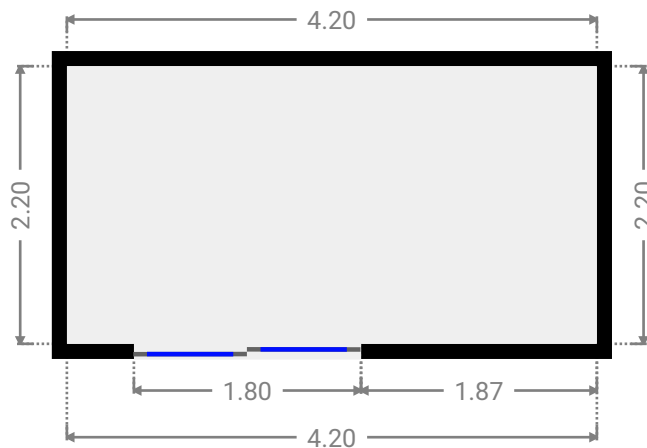
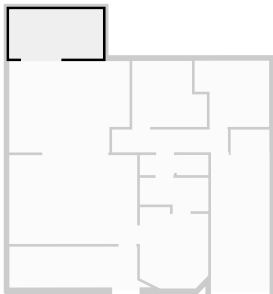
▼ Kitchen
Ground Floor

WIDTH: 5.40 m • LENGTH: 4.10 m
AREA: 21.09 m² • PERIMETER: 19.00 m



▼ Other
Ground Floor

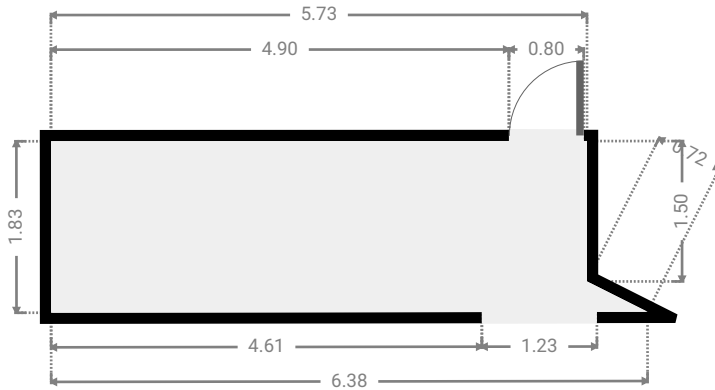
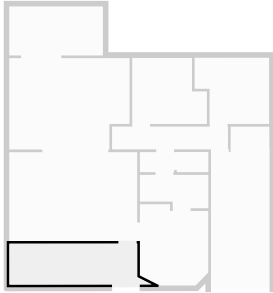
WIDTH: 4.20 m • LENGTH: 2.20 m
AREA: 9.24 m² • PERIMETER: 12.80 m



FLOORS: 1

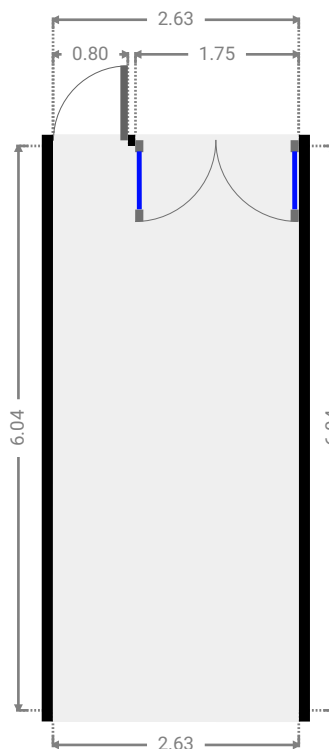
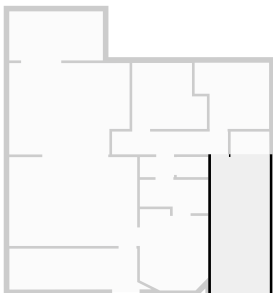
▼ Other
Ground Floor

WIDTH: 6.38 m • LENGTH: 1.83 m
AREA: 10.61 m² • PERIMETER: 16.17 m



▼ Garage
Ground Floor

WIDTH: 2.63 m • LENGTH: 6.04 m
AREA: 15.87 m² • PERIMETER: 17.33 m



▼ **Laundry Room**
Ground Floor

WIDTH: 1.74 m • LENGTH: 1.03 m
AREA: 1.77 m² • PERIMETER: 5.51 m

