

117 Abby Drive

SUBMITTED BY
Ray White Rockhampton

CREATED ON
2022-12-12

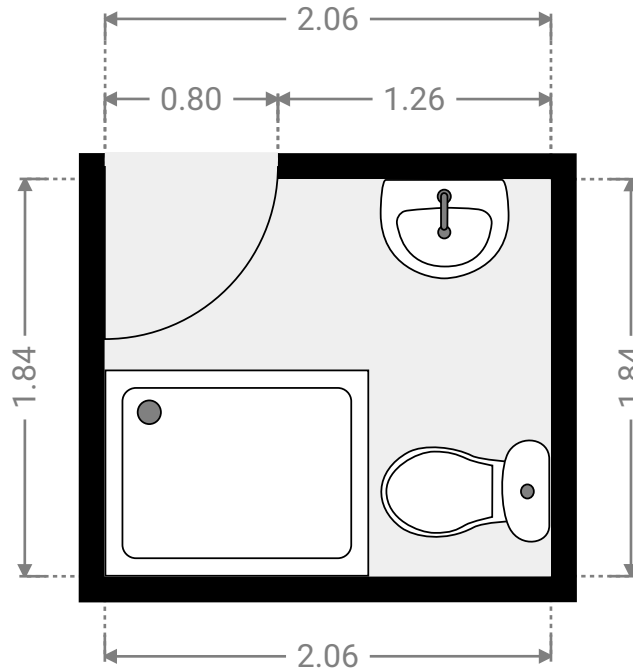
Floors
1

▼ Ground Floor



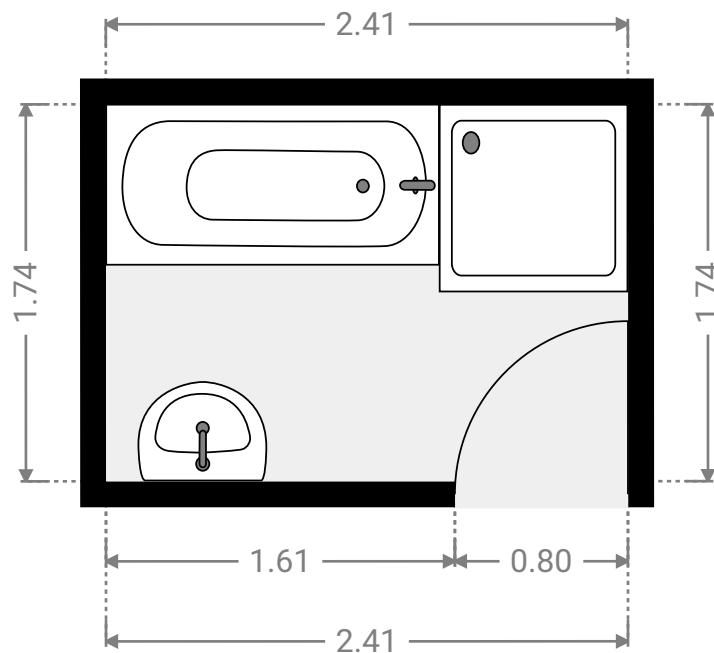
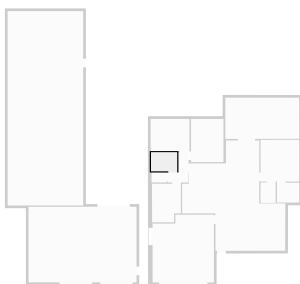
▼ **Bathroom**
Ground Floor

WIDTH: 2.06 m • LENGTH: 1.84 m
AREA: 3.78 m² • PERIMETER: 7.79 m



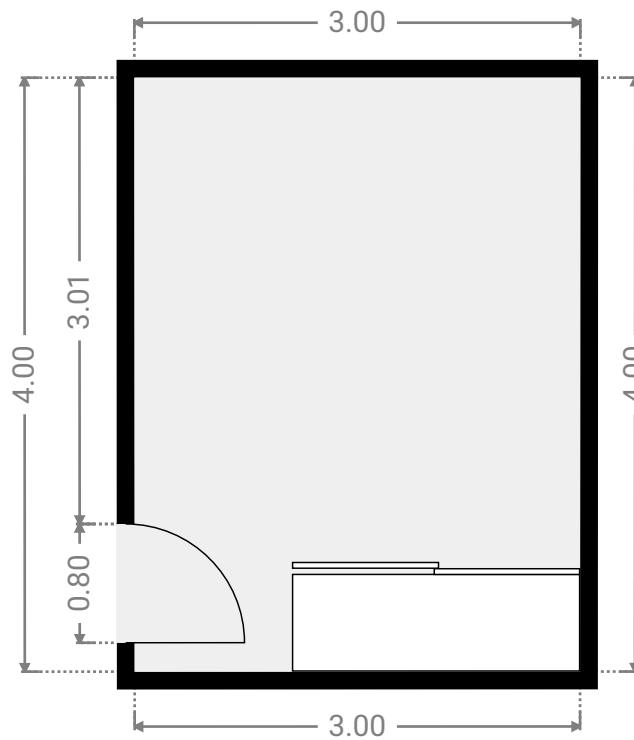
▼ **Bathroom**
Ground Floor

WIDTH: 2.41 m • LENGTH: 1.74 m
AREA: 4.20 m² • PERIMETER: 8.31 m



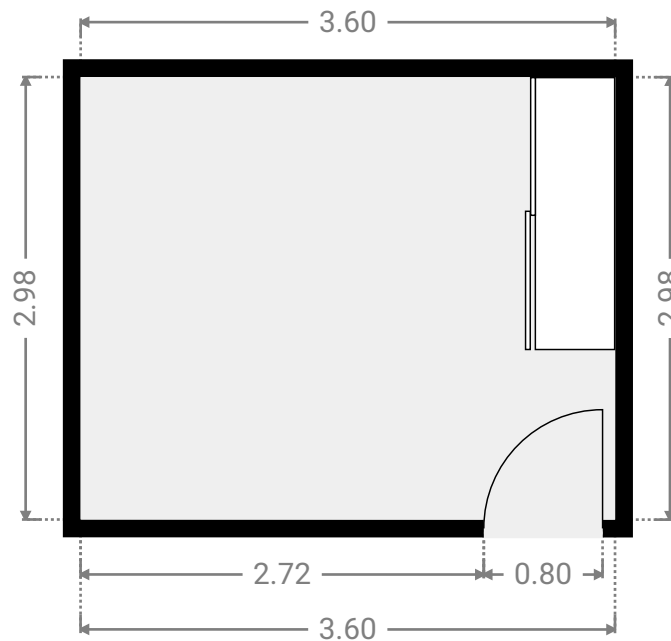
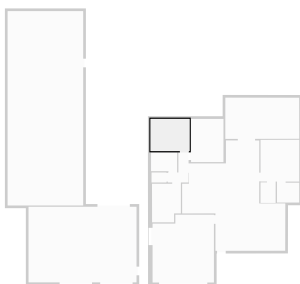
▼ **Bedroom**
Ground Floor

WIDTH: 3.00 m • LENGTH: 4.00 m
AREA: 12.01 m² • PERIMETER: 14.00 m



▼ **Bedroom**
Ground Floor

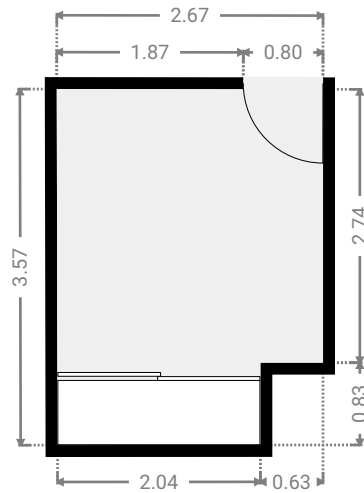
WIDTH: 3.60 m • LENGTH: 2.98 m
AREA: 10.73 m² • PERIMETER: 13.16 m



FLOORS: 1

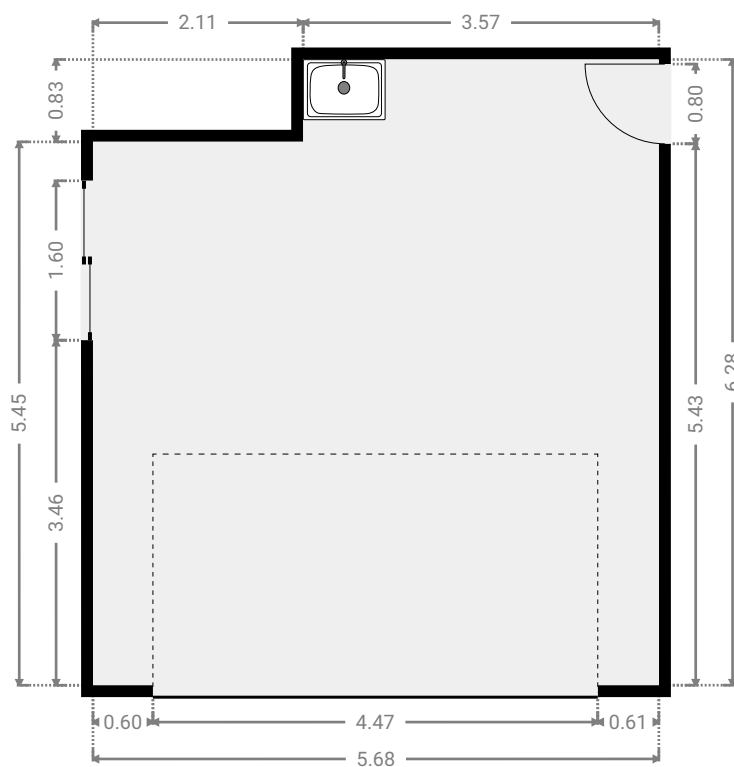
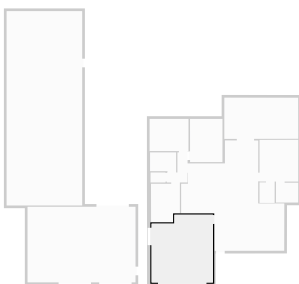
▼ **Bedroom**
Ground Floor

WIDTH: 2.67 m • LENGTH: 3.57 m
AREA: 9.01 m² • PERIMETER: 12.48 m



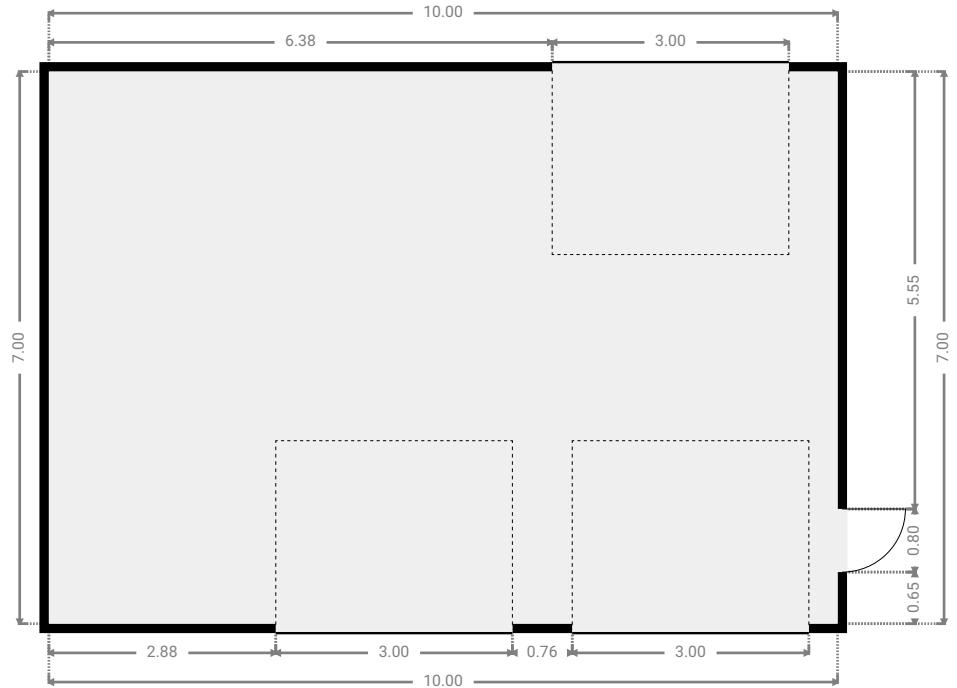
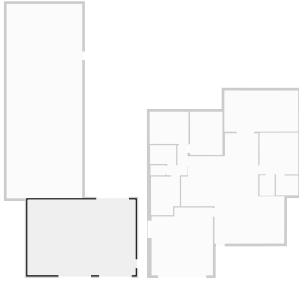
▼ **Garage**
Ground Floor

WIDTH: 5.68 m • LENGTH: 6.28 m
AREA: 33.93 m² • PERIMETER: 23.92 m



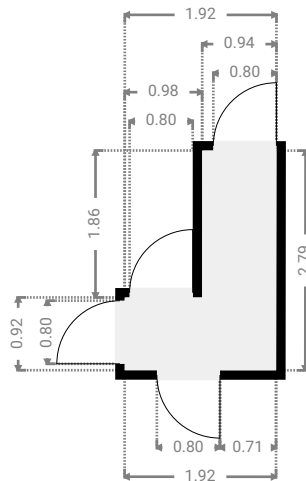
▼ **Garage**
Ground Floor

WIDTH: 10.00 m • LENGTH: 7.00 m
AREA: 70.00 m² • PERIMETER: 34.00 m



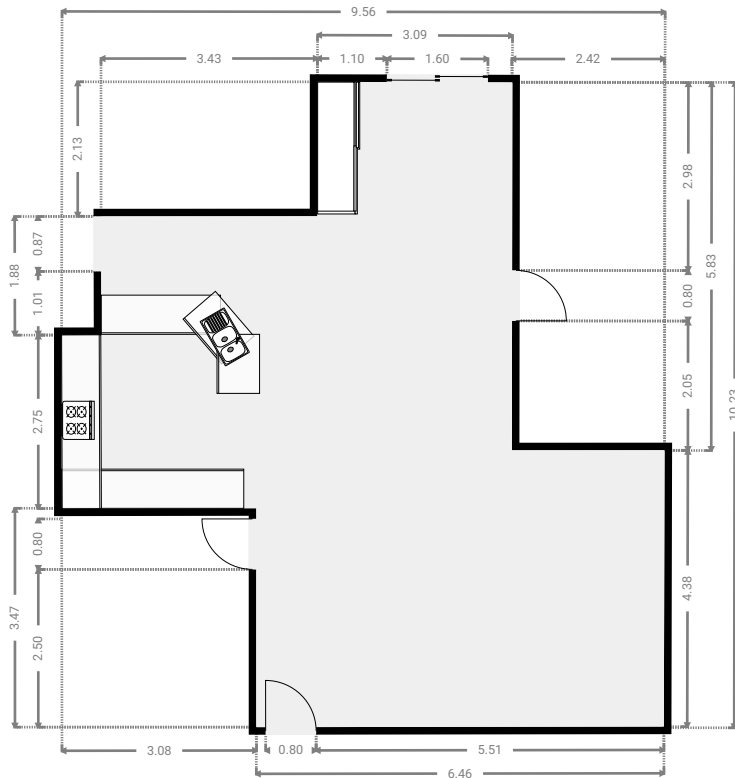
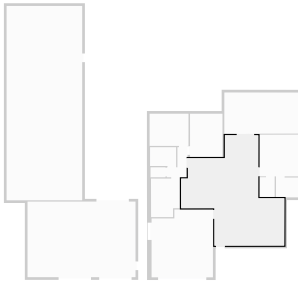
▼ **Hall**
Ground Floor

WIDTH: 1.92 m • LENGTH: 2.79 m
AREA: 3.52 m² • PERIMETER: 9.41 m



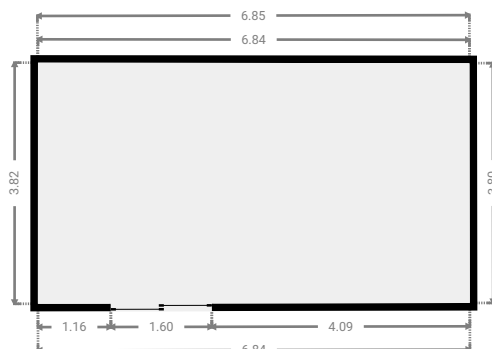
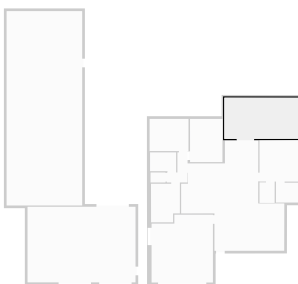
▼ **Kitchen**
Ground Floor

WIDTH: 9.56 m • LENGTH: 10.23 m
AREA: 63.04 m² • PERIMETER: 39.55 m



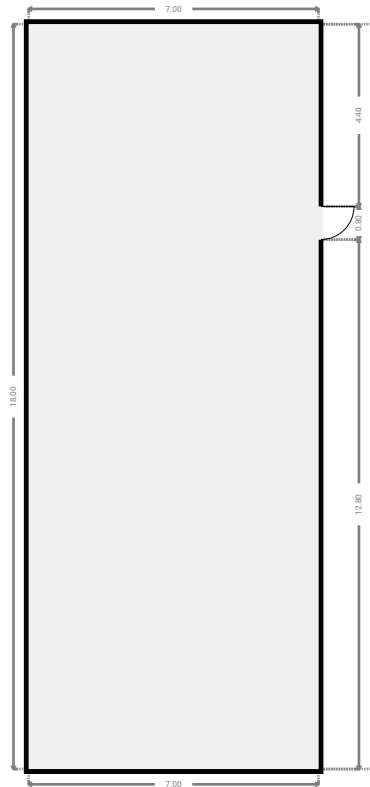
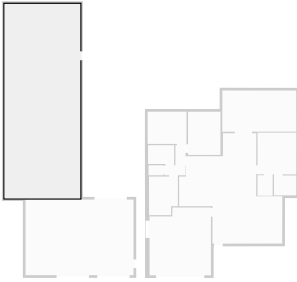
▼ **Other**
Ground Floor

WIDTH: 6.85 m • LENGTH: 3.82 m
AREA: 26.07 m² • PERIMETER: 21.30 m



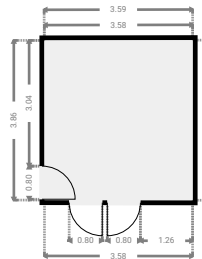
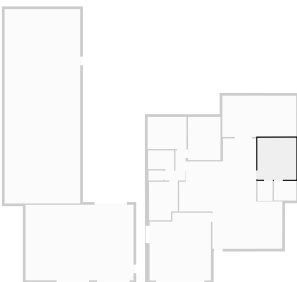
▼ Other Ground Floor

WIDTH: 7.00 m • LENGTH: 18.00 m
AREA: 126.00 m² • PERIMETER: 50.00 m



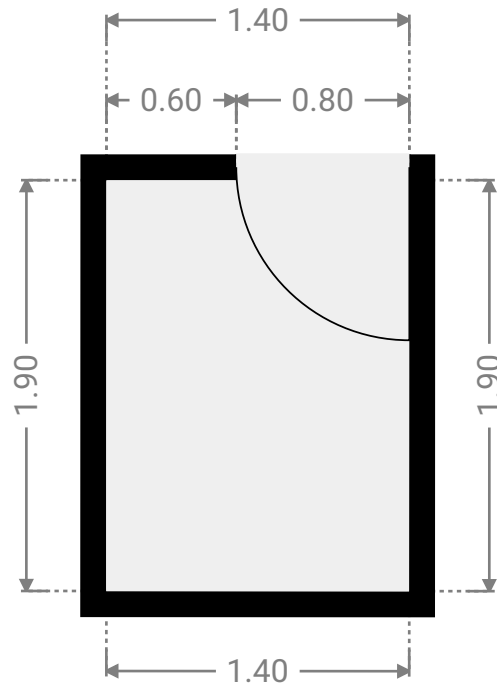
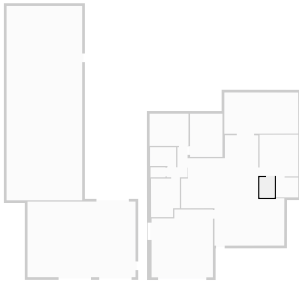
▼ Primary Bedroom Ground Floor

WIDTH: 3.59 m • LENGTH: 3.87 m
AREA: 13.84 m² • PERIMETER: 14.89 m



▼ **Closet**
Ground Floor

WIDTH: 1.40 m • LENGTH: 1.90 m
AREA: 2.66 m² • PERIMETER: 6.60 m



▼ **Toilet**
Ground Floor

WIDTH: 1.39 m • LENGTH: 0.92 m
AREA: 1.28 m² • PERIMETER: 4.62 m

