

116 Alexandra Street

SUBMITTED BY

Ray White Rockhampton Casey
stockers@cqoz.com

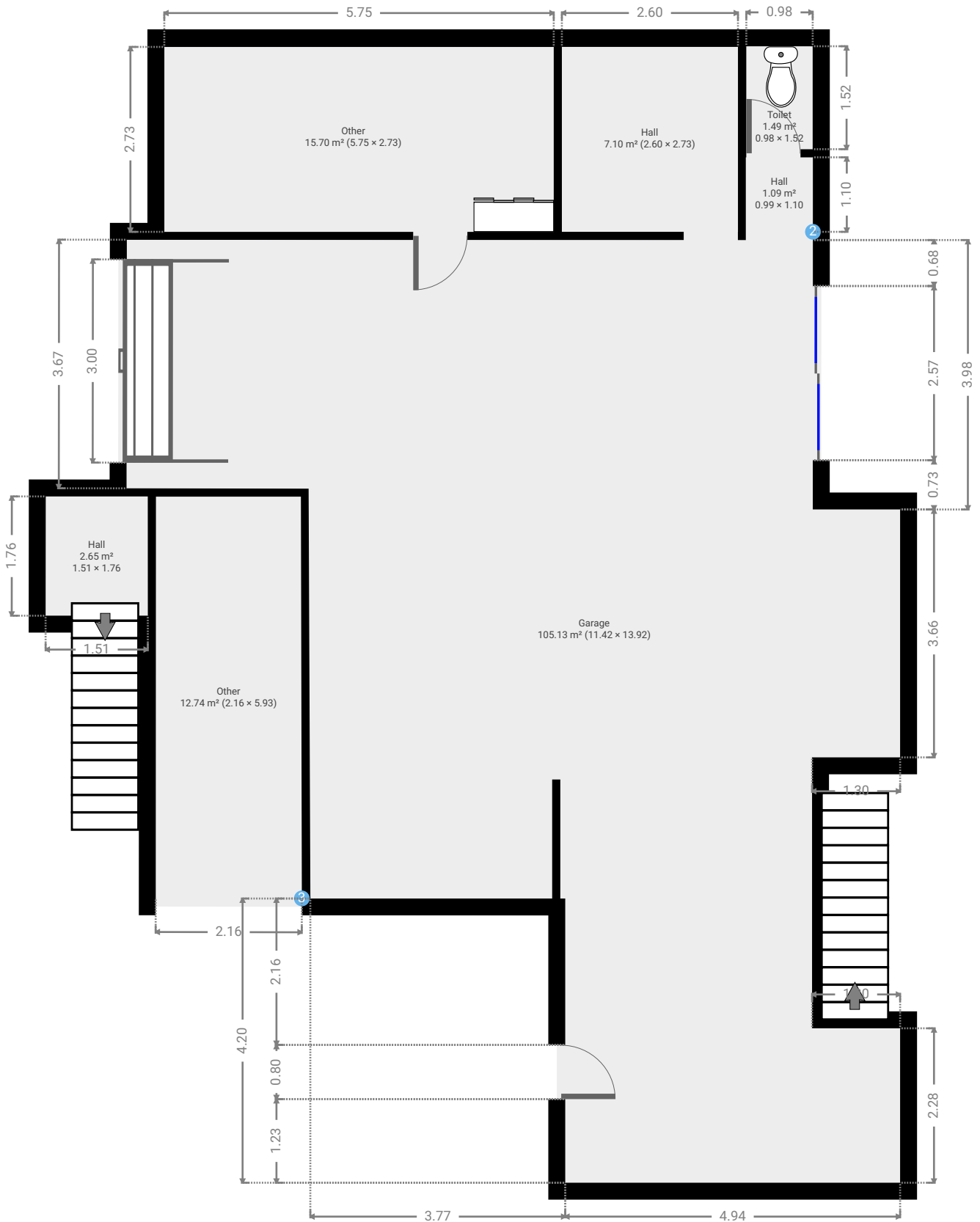
CREATED ON

2022-04-11

Floors

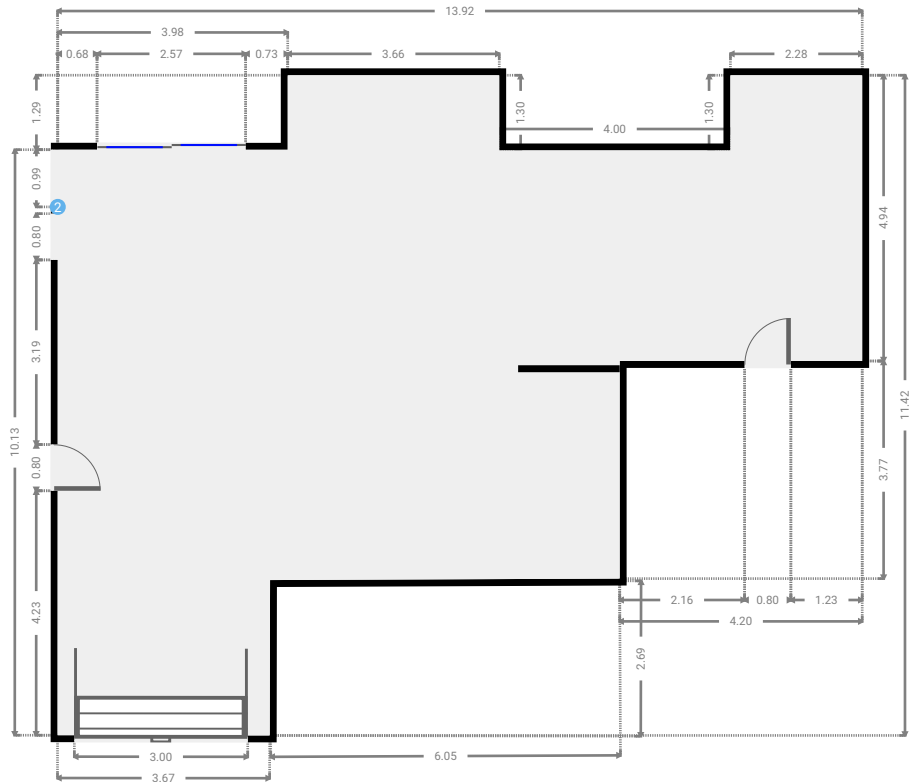
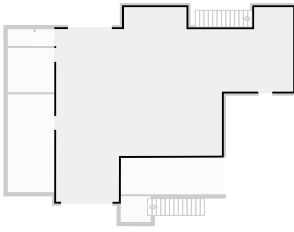
2

▼ Ground Floor



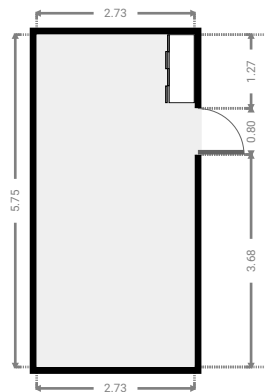
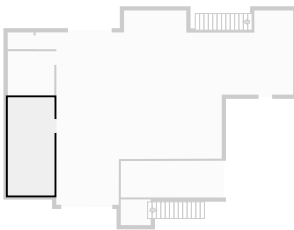
▼ **Garage**
Ground Floor

WIDTH: 13.91 m • LENGTH: 11.43 m
AREA: 105.13 m² • PERIMETER: 53.25 m



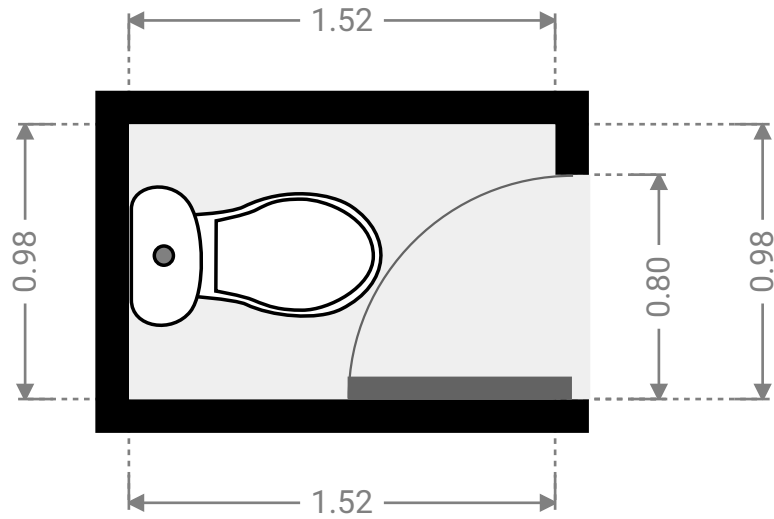
▼ **Other**
Ground Floor

WIDTH: 2.73 m • LENGTH: 5.75 m
AREA: 15.70 m² • PERIMETER: 16.96 m



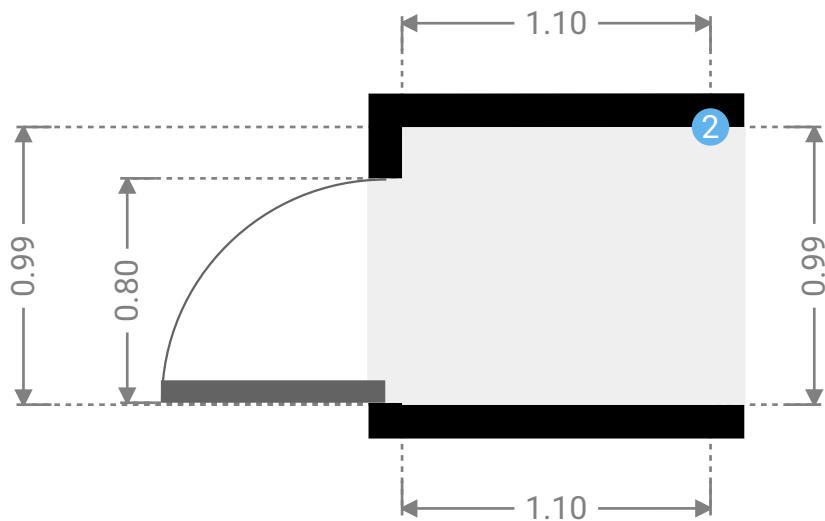
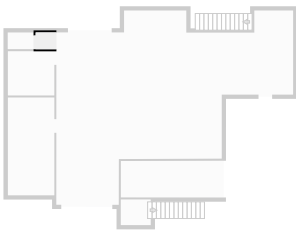
▼ **Toilet**
Ground Floor

WIDTH: 1.52 m • LENGTH: 0.98 m
AREA: 1.49 m² • PERIMETER: 5.00 m



▼ **Hall**
Ground Floor

WIDTH: 1.10 m • LENGTH: 0.99 m
AREA: 1.09 m² • PERIMETER: 4.18 m



▼ **Hall**/Ground Floor

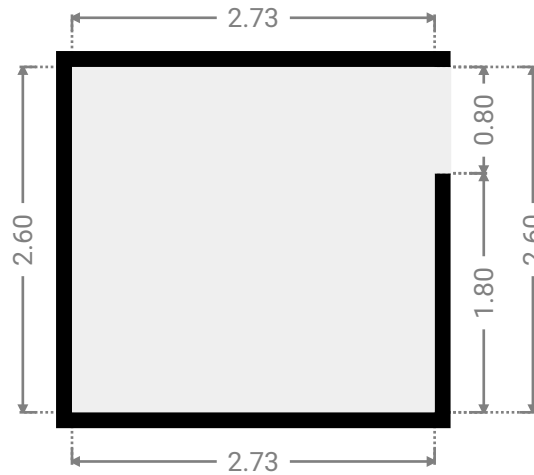
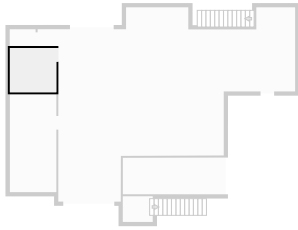
2 **OPENING**

Height
0.00 m



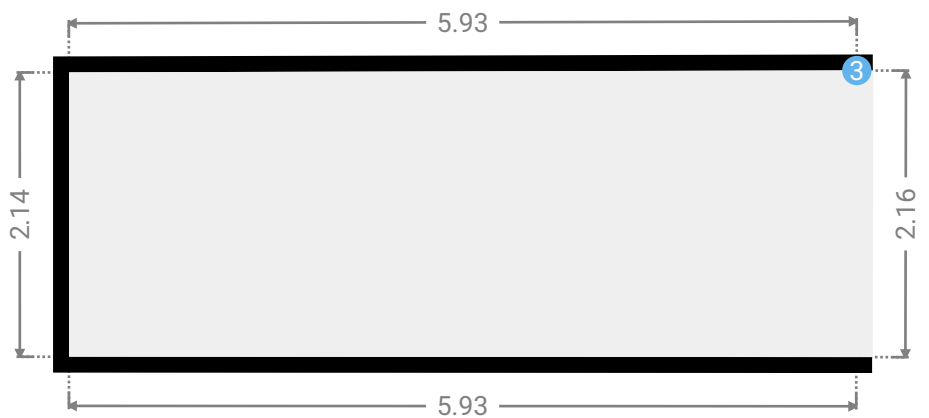
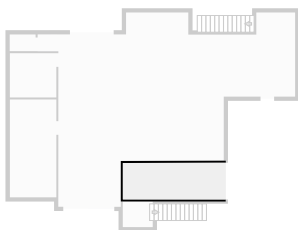
▼ **Hall**
Ground Floor

WIDTH: 2.73 m • LENGTH: 2.60 m
AREA: 7.10 m² • PERIMETER: 10.66 m



▼ **Other**
Ground Floor

WIDTH: 5.93 m • LENGTH: 2.17 m
AREA: 12.74 m² • PERIMETER: 16.16 m



▼ **Other**/Ground Floor

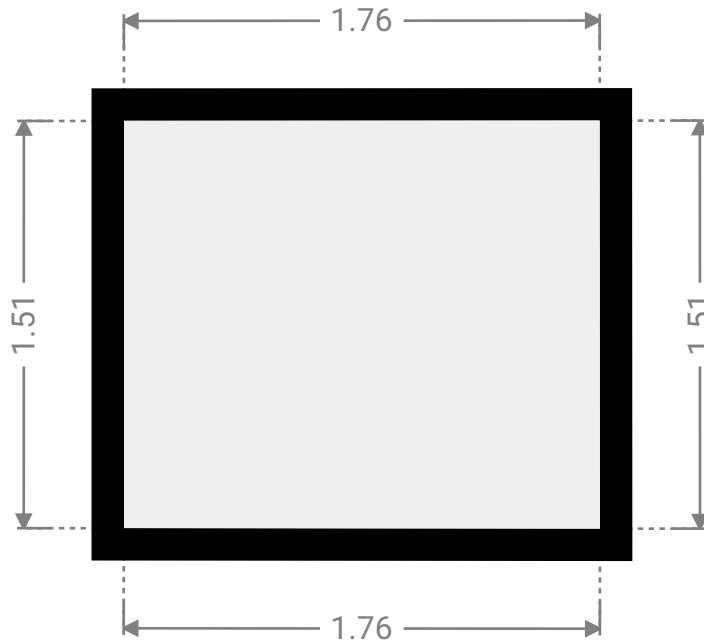
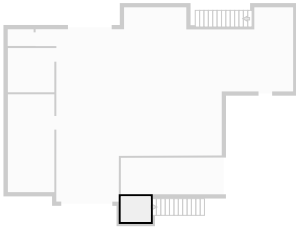
3 **OPENING**

Height
0.00 m

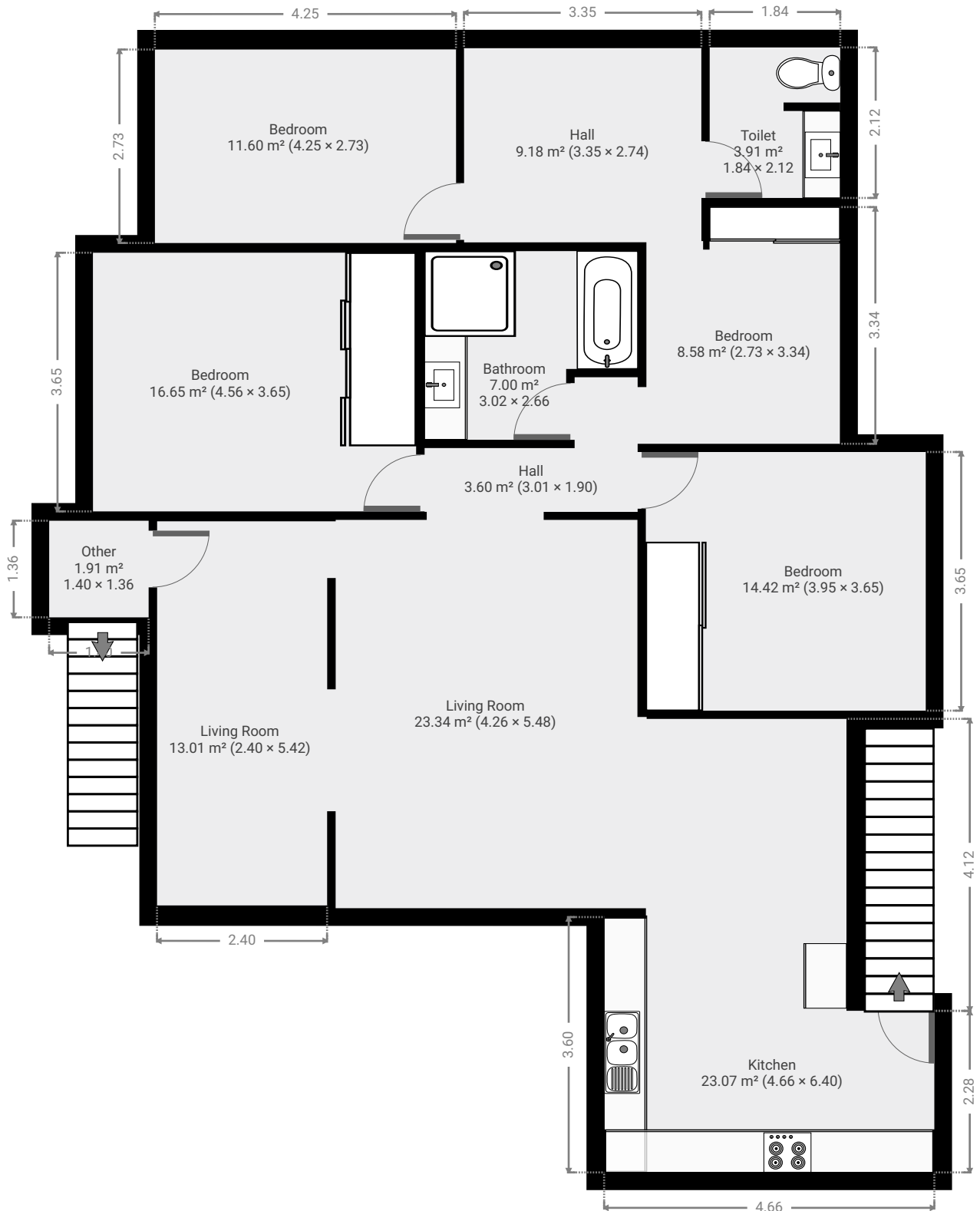


▼ **Hall**
Ground Floor

WIDTH: 1.76 m • LENGTH: 1.51 m
AREA: 2.65 m² • PERIMETER: 6.54 m

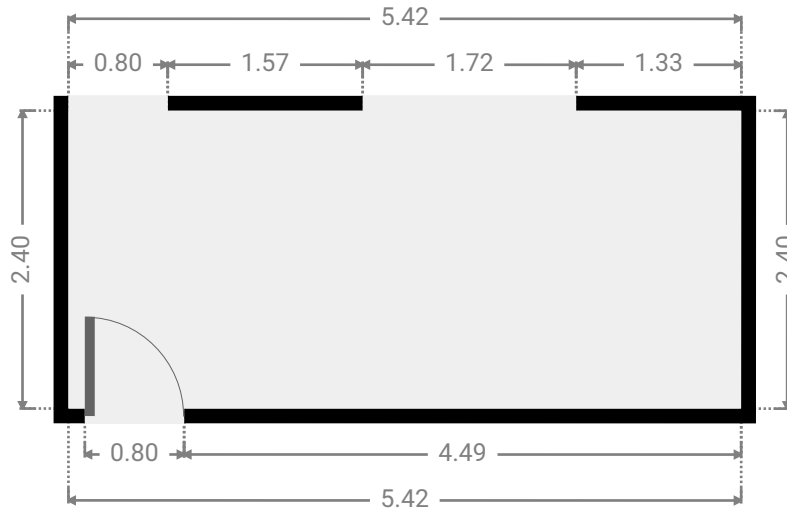
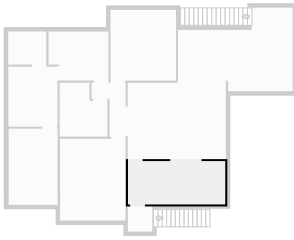


▼ 1st Floor



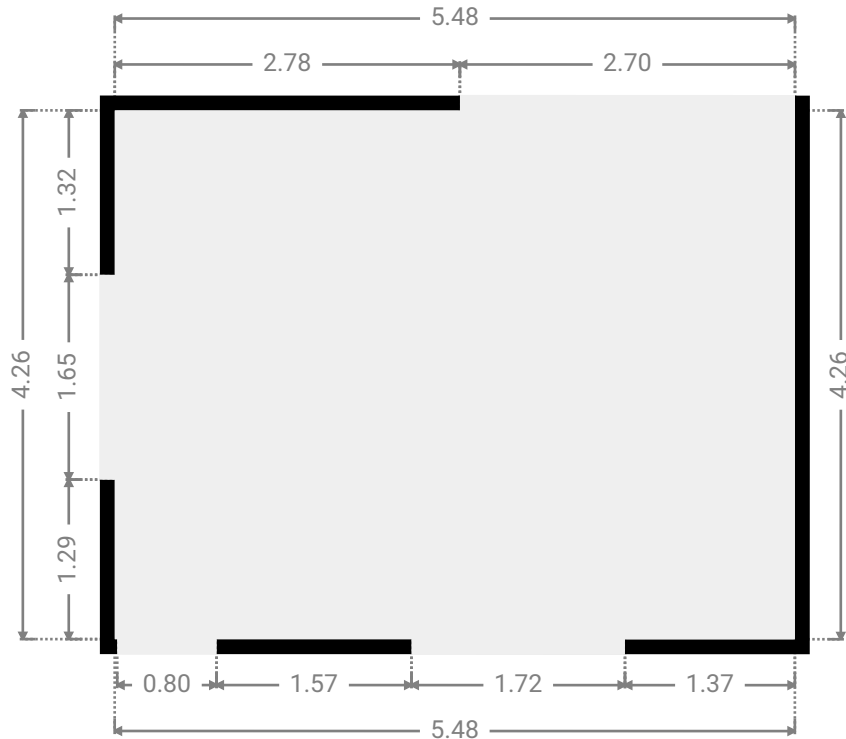
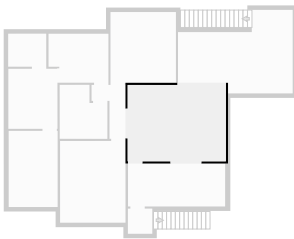
▼ Living Room
1st Floor

WIDTH: 5.42 m • LENGTH: 2.40 m
AREA: 13.01 m² • PERIMETER: 15.64 m



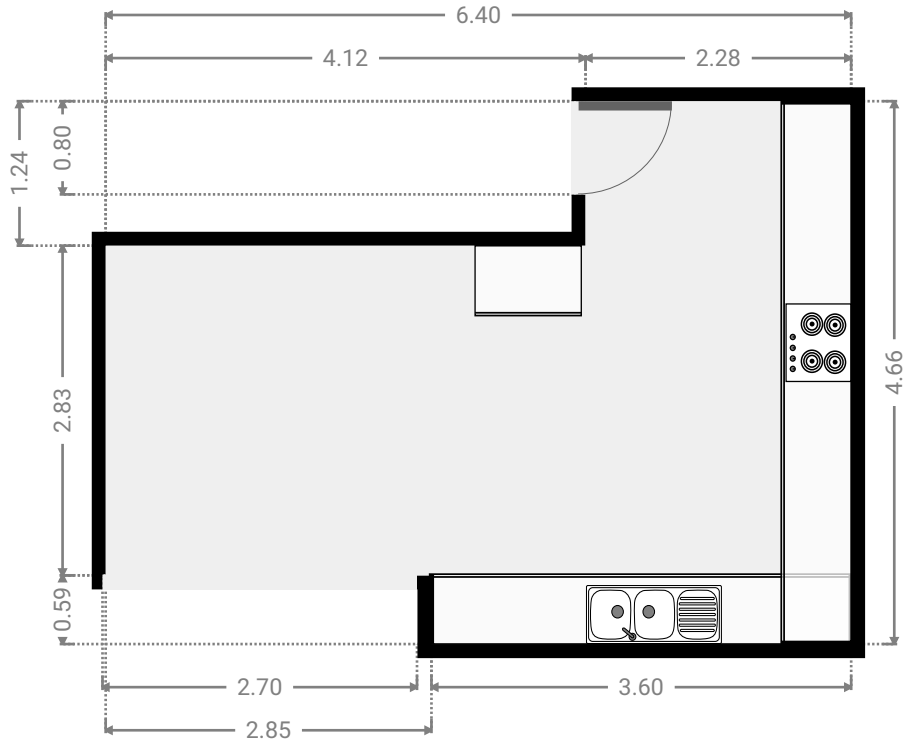
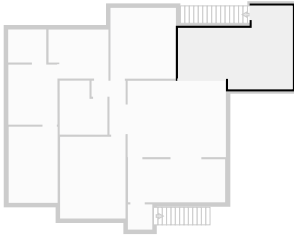
▼ Living Room
1st Floor

WIDTH: 5.48 m • LENGTH: 4.26 m
AREA: 23.34 m² • PERIMETER: 19.48 m



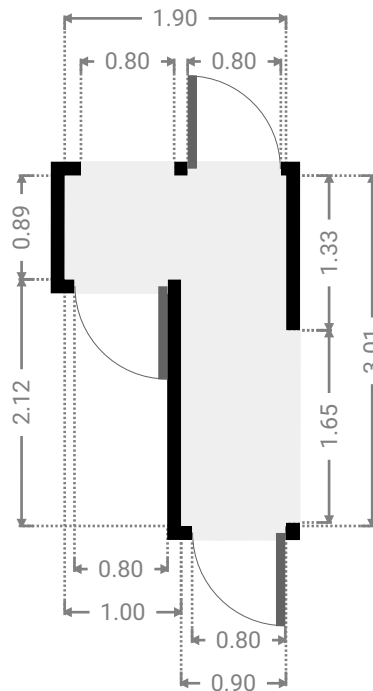
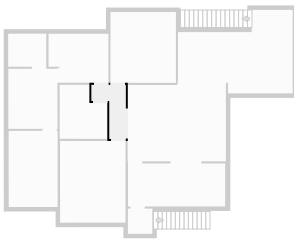
▼ **Kitchen**
1st Floor

WIDTH: 6.40 m • LENGTH: 4.66 m
AREA: 23.07 m² • PERIMETER: 22.12 m



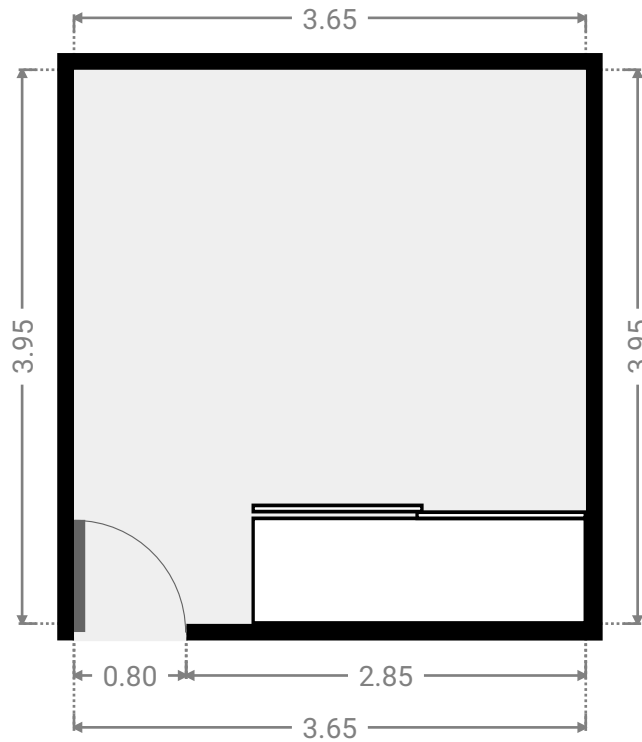
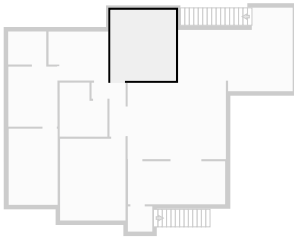
▼ **Hall**
1st Floor

WIDTH: 1.90 m • LENGTH: 3.01 m
AREA: 3.60 m² • PERIMETER: 9.81 m



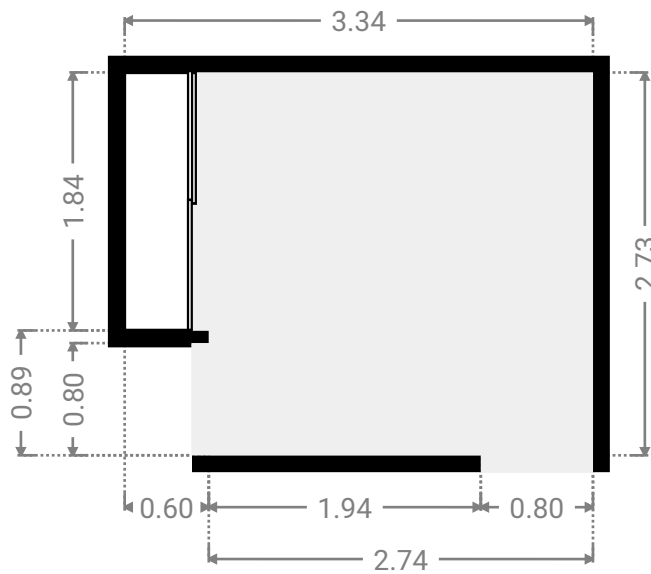
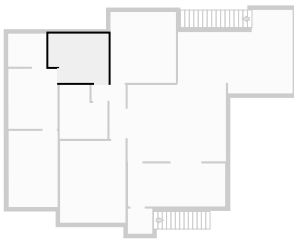
▼ Bedroom
1st Floor

WIDTH: 3.65 m • LENGTH: 3.95 m
AREA: 14.42 m² • PERIMETER: 15.20 m



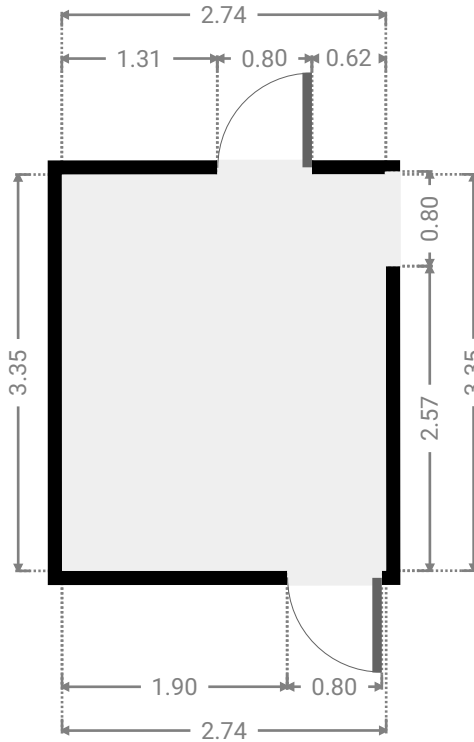
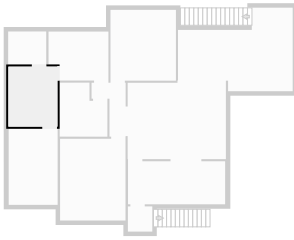
▼ Bedroom
1st Floor

WIDTH: 3.34 m • LENGTH: 2.73 m
AREA: 8.58 m² • PERIMETER: 12.14 m



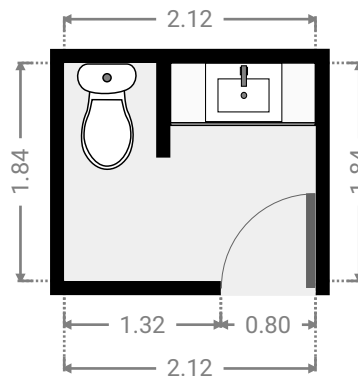
▼ **Hall**
1st Floor

WIDTH: 2.74 m • LENGTH: 3.35 m
AREA: 9.18 m² • PERIMETER: 12.18 m



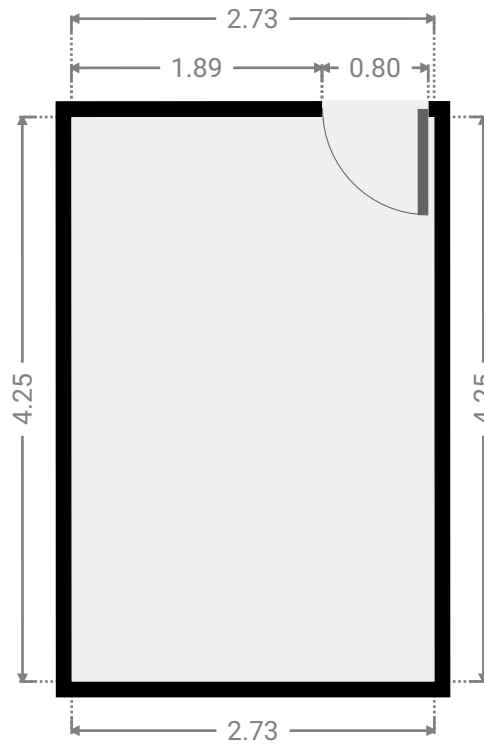
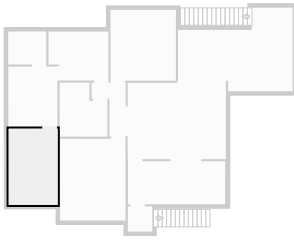
▼ **Toilet**
1st Floor

WIDTH: 2.12 m • LENGTH: 1.84 m
AREA: 3.91 m² • PERIMETER: 7.93 m



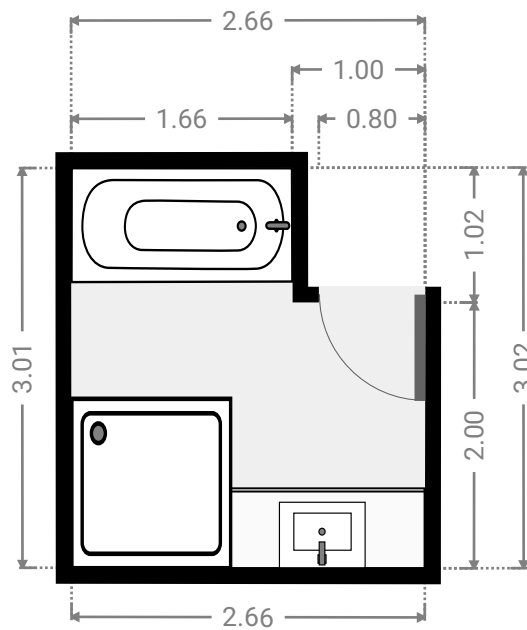
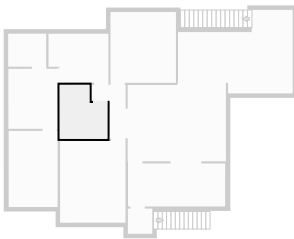
▼ **Bedroom**
1st Floor

WIDTH: 2.73 m • LENGTH: 4.25 m
AREA: 11.60 m² • PERIMETER: 13.96 m



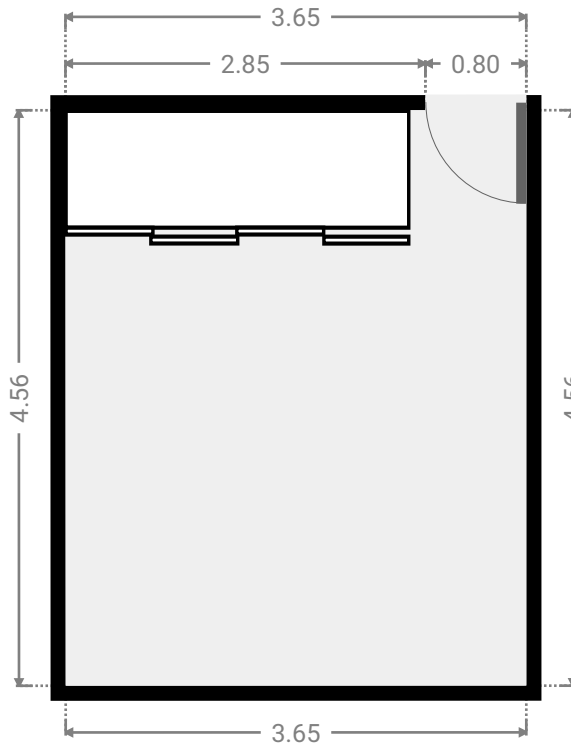
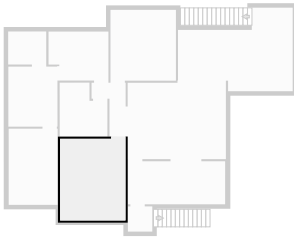
▼ **Bathroom**
1st Floor

WIDTH: 2.66 m • LENGTH: 3.02 m
AREA: 7.00 m² • PERIMETER: 11.35 m



▼ **Bedroom**
1st Floor

WIDTH: 3.65 m • LENGTH: 4.56 m
AREA: 16.65 m² • PERIMETER: 16.42 m



▼ **Other**
1st Floor

WIDTH: 1.36 m • LENGTH: 1.40 m
AREA: 1.91 m² • PERIMETER: 5.53 m

