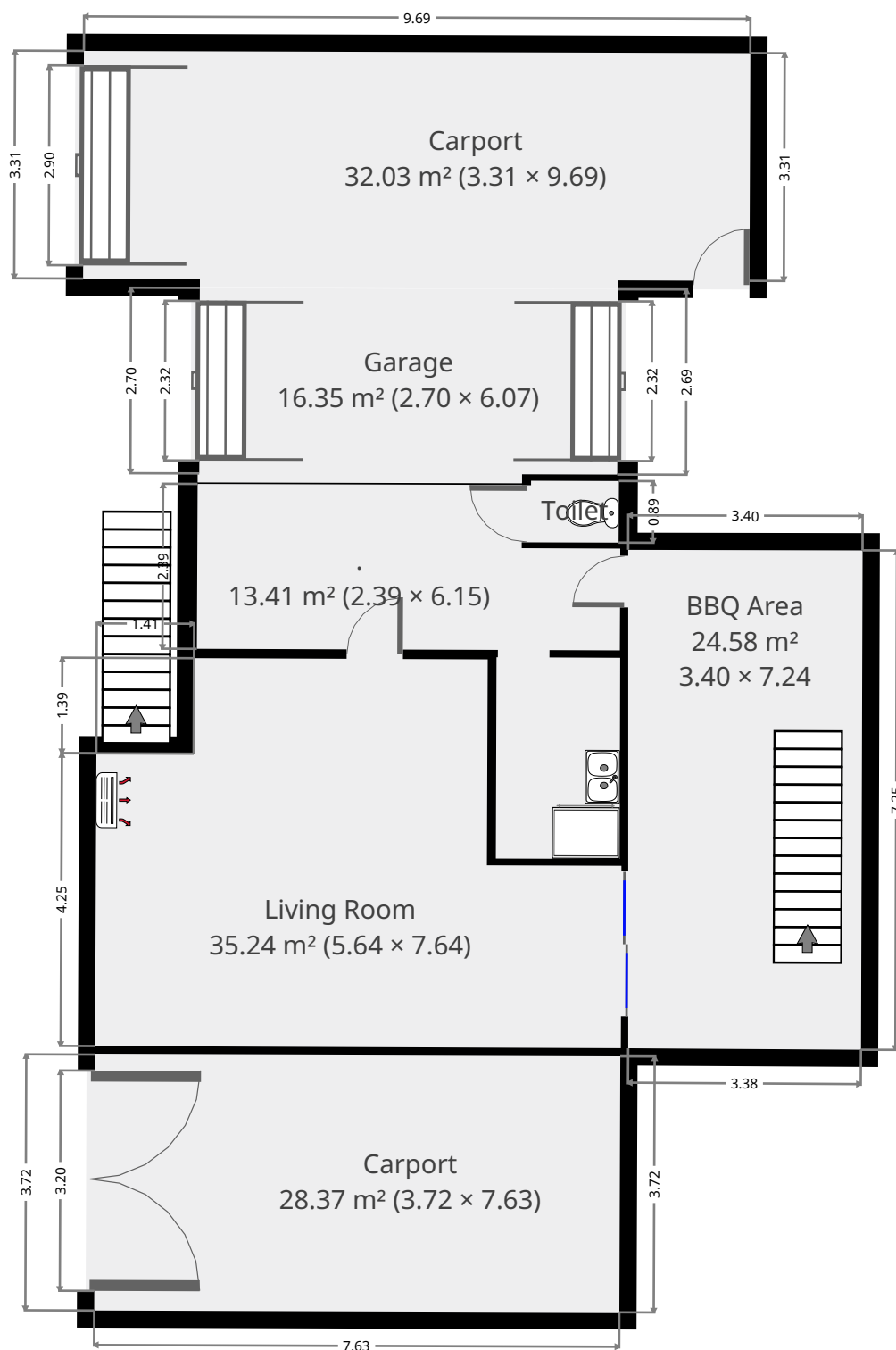


# 113 Hyde Street

## Ground Floor



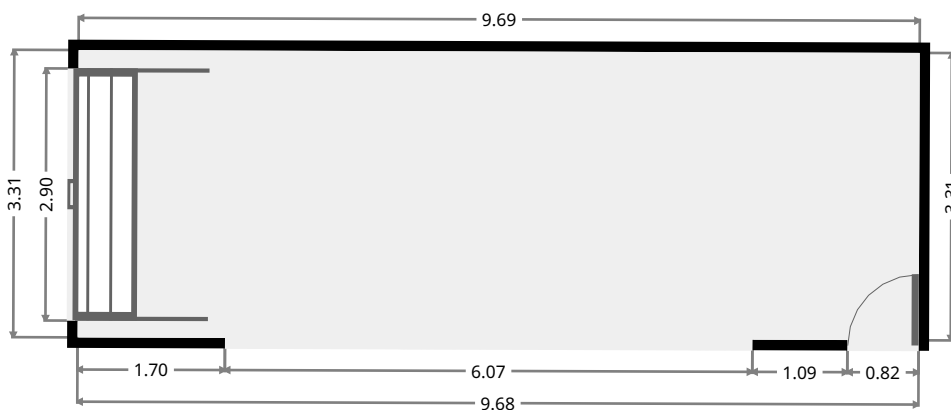
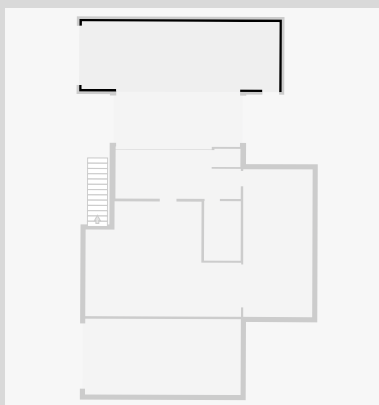
THIS FLOORPLAN IS PROVIDED WITHOUT WARRANTY OF ANY KIND. SENSOPIA DISCLAIMS ANY WARRANTY INCLUDING, WITHOUT LIMITATION, SATISFACTORY QUALITY OR ACCURACY OF DIMENSIONS.



# 113 Hyde Street

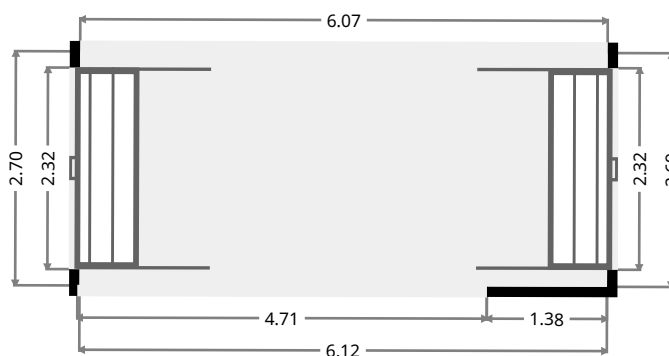
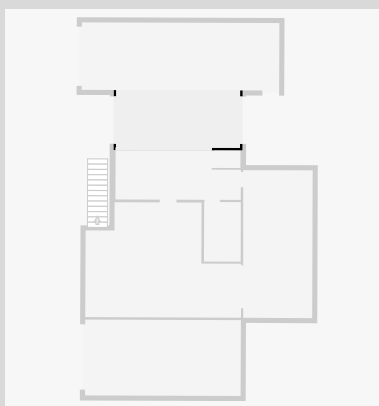
## Carport

Width: 3.31 m  
Length: 9.69 m  
Area: 32.03 m<sup>2</sup>  
Perimeter: 25.98 m



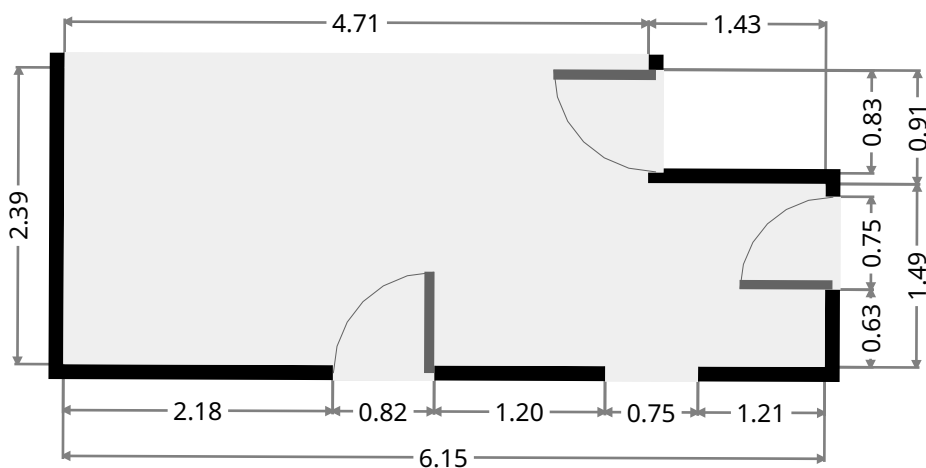
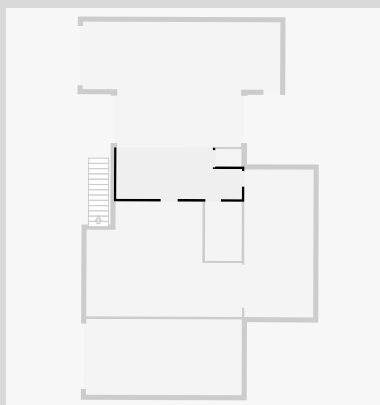
## Garage

Width: 2.70 m  
Length: 6.07 m  
Area: 16.35 m<sup>2</sup>  
Perimeter: 17.53 m



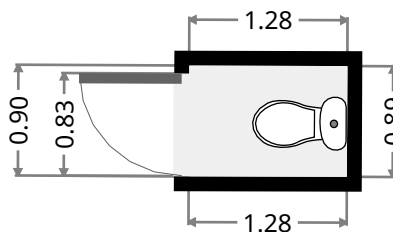
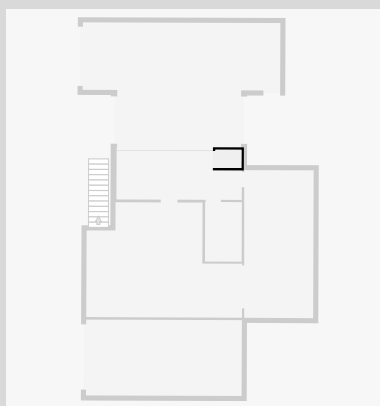
# 113 Hyde Street

•  
 Width: 2.39 m  
 Length: 6.15 m  
 Area: 13.41 m<sup>2</sup>  
 Perimeter: 17.08 m  
 Ceiling Height: 2.17 m



## Toilet / Half Bath

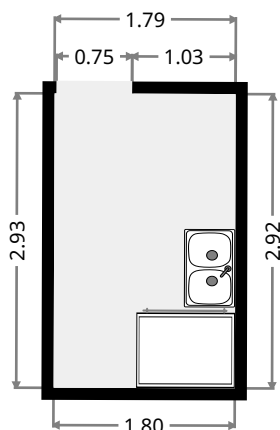
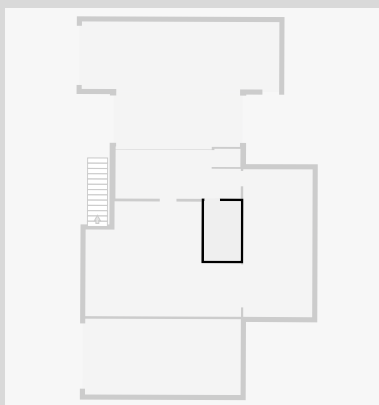
Width: 0.89 m  
 Length: 1.28 m  
 Area: 1.14 m<sup>2</sup>  
 Perimeter: 4.34 m



# 113 Hyde Street

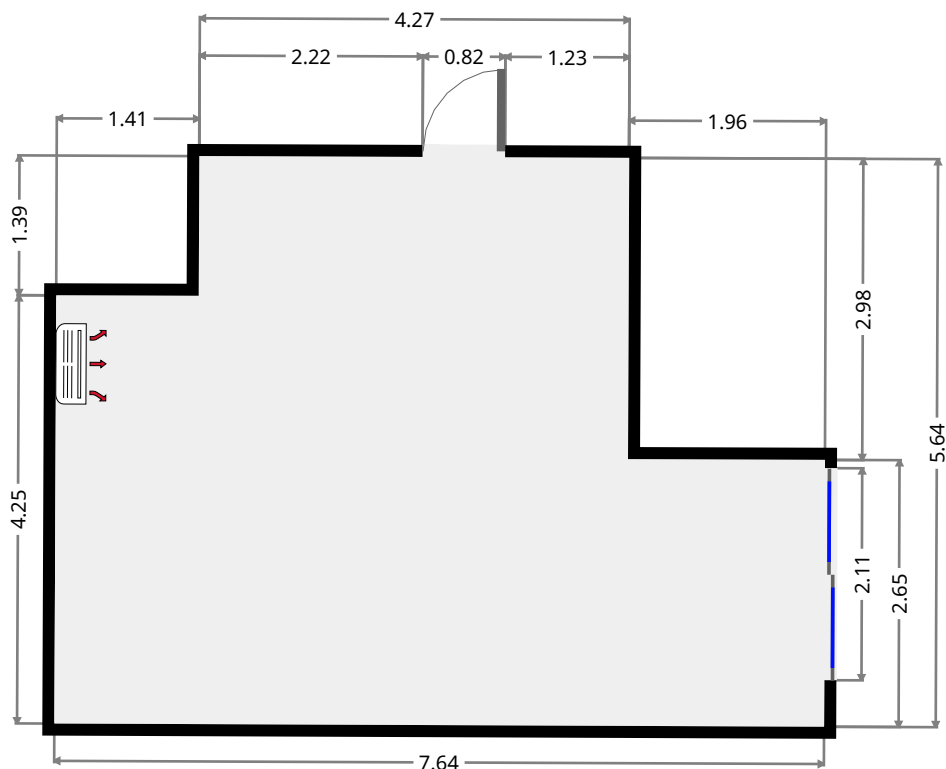
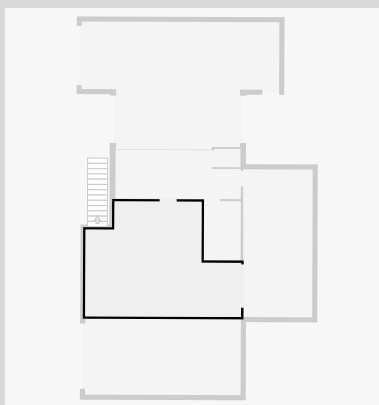
## Laundry Room

Width: 1.80 m  
Length: 2.93 m  
Area: 5.25 m<sup>2</sup>  
Perimeter: 9.44 m

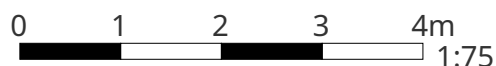


## Living Room

Width: 5.64 m  
Length: 7.64 m  
Area: 35.24 m<sup>2</sup>  
Perimeter: 26.55 m  
Ceiling Height: 2.17 m



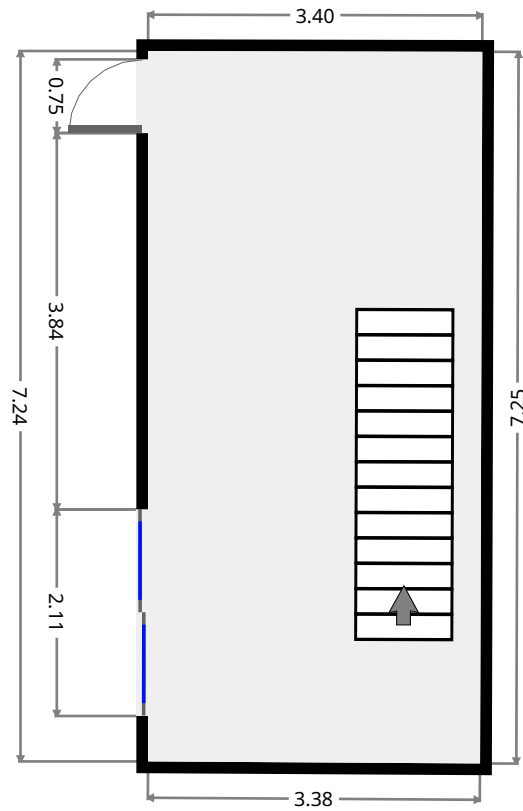
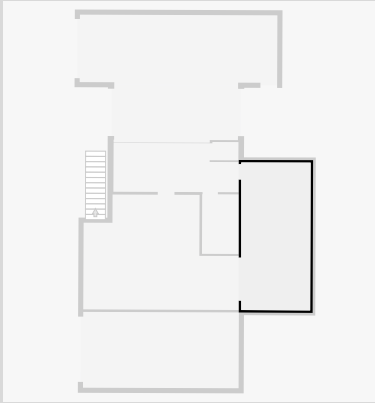
THIS FLOORPLAN IS PROVIDED WITHOUT WARRANTY OF ANY KIND. SENSOPIA DISCLAIMS ANY WARRANTY INCLUDING, WITHOUT LIMITATION, SATISFACTORY QUALITY OR ACCURACY OF DIMENSIONS.



# 113 Hyde Street

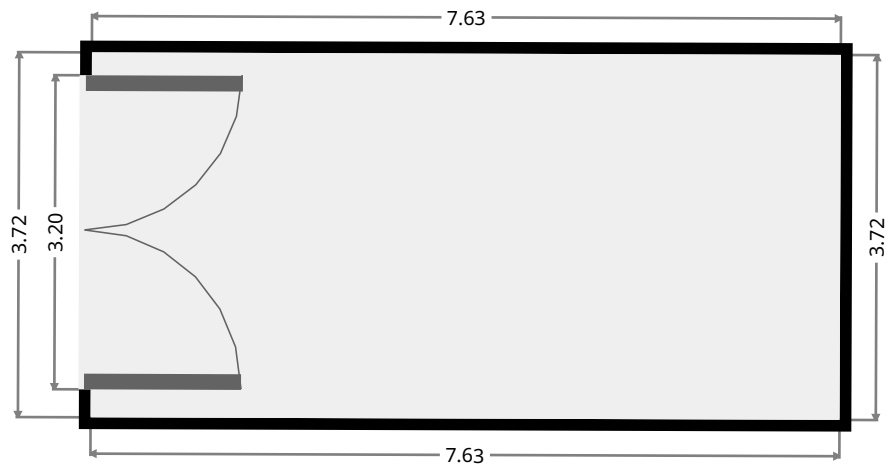
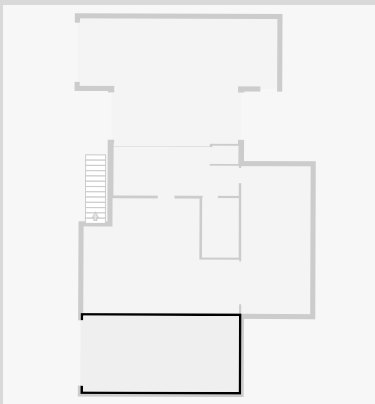
## BBQ Area

Width: 3.40 m  
 Length: 7.24 m  
 Area: 24.58 m<sup>2</sup>  
 Perimeter: 21.28 m  
 Ceiling Height: 2.17 m



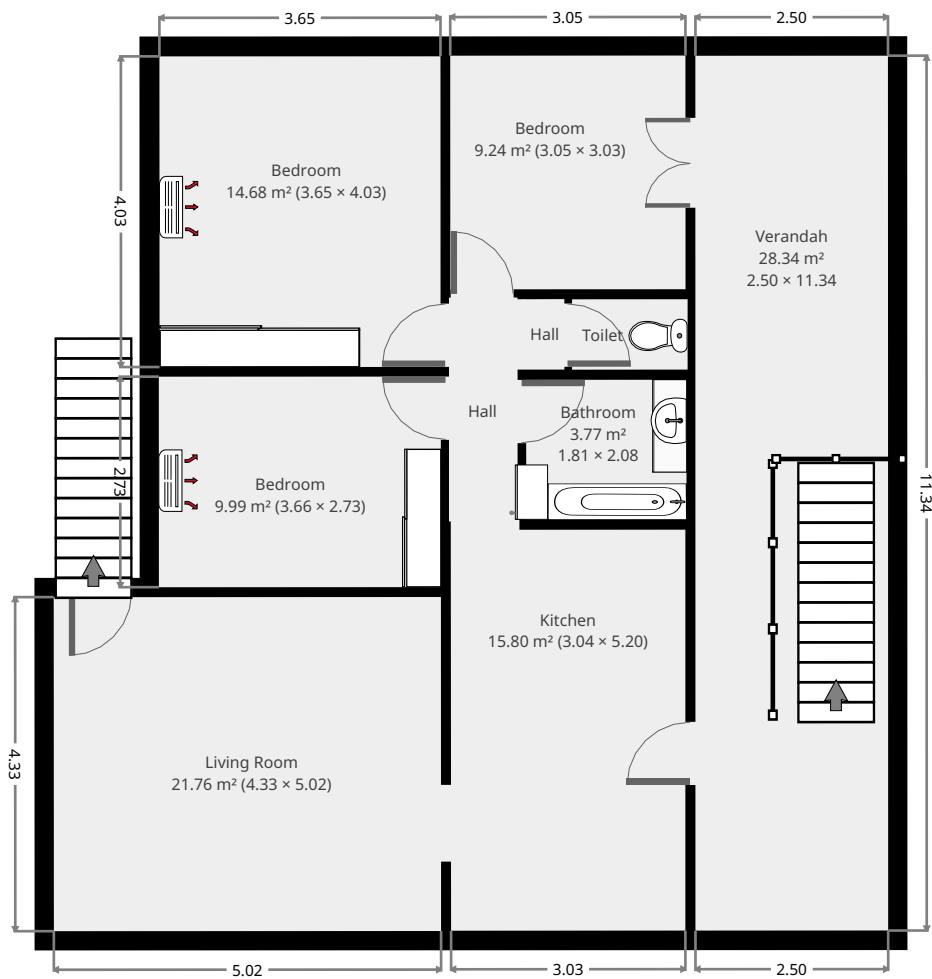
## Carport

Width: 3.72 m  
 Length: 7.63 m  
 Area: 28.37 m<sup>2</sup>  
 Perimeter: 22.70 m



# 113 Hyde Street

## 1st Floor



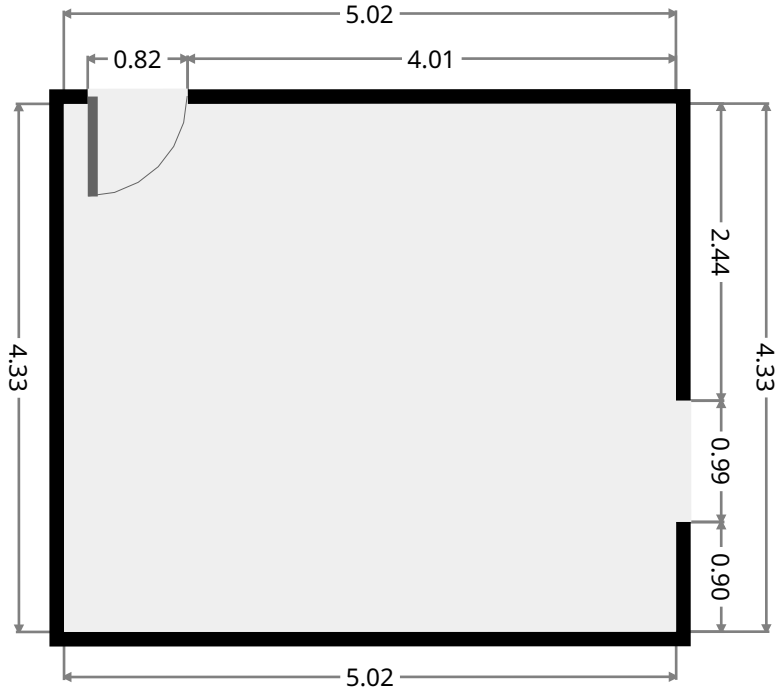
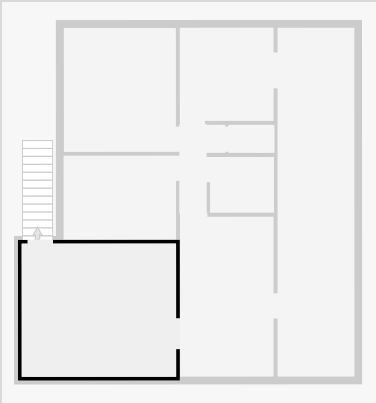
THIS FLOORPLAN IS PROVIDED WITHOUT WARRANTY OF ANY KIND. SENSOPIA DISCLAIMS ANY WARRANTY INCLUDING, WITHOUT LIMITATION, SATISFACTORY QUALITY OR ACCURACY OF DIMENSIONS.



# 113 Hyde Street

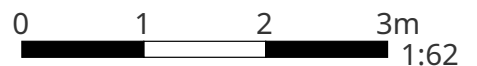
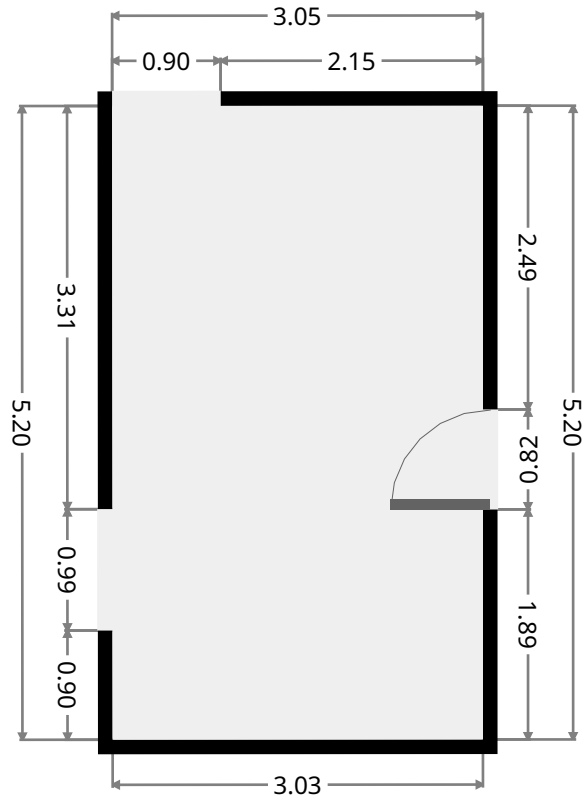
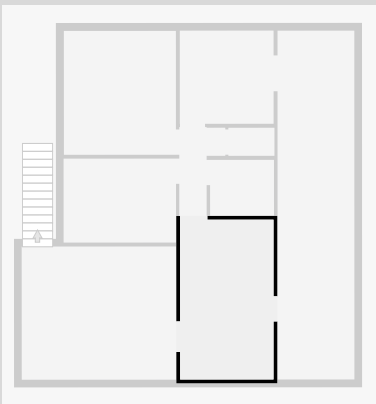
## Living Room

Width: 4.33 m  
 Length: 5.02 m  
 Area: 21.76 m<sup>2</sup>  
 Perimeter: 18.71 m



## Kitchen

Width: 3.04 m  
 Length: 5.20 m  
 Area: 15.80 m<sup>2</sup>  
 Perimeter: 16.48 m

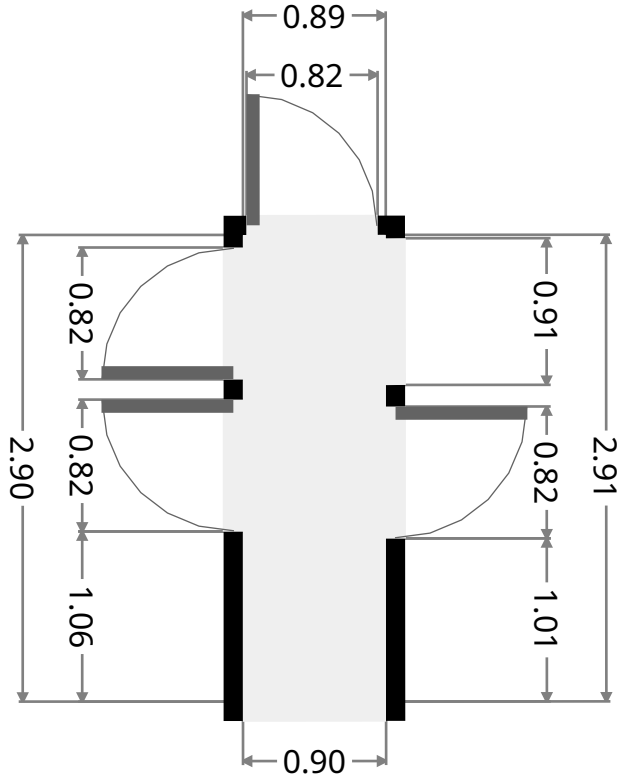
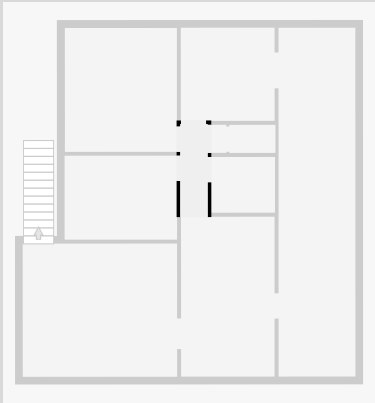


THIS FLOORPLAN IS PROVIDED WITHOUT WARRANTY OF ANY KIND. SENSOPIA DISCLAIMS ANY WARRANTY INCLUDING, WITHOUT LIMITATION, SATISFACTORY QUALITY OR ACCURACY OF DIMENSIONS.

# 113 Hyde Street

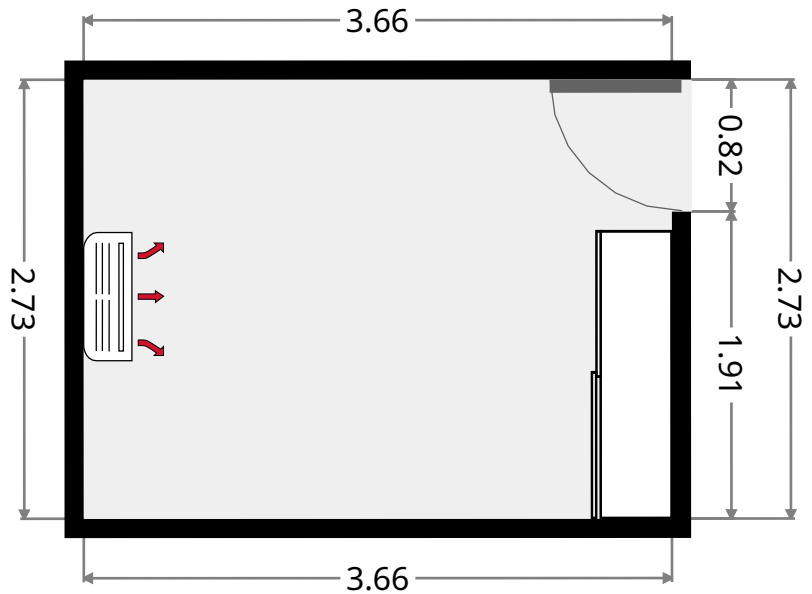
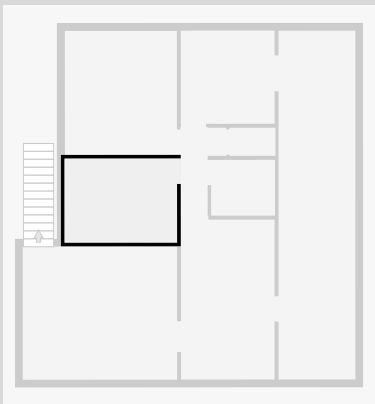
## Hall

Width: 0.89 m  
 Length: 2.91 m  
 Area: 2.58 m<sup>2</sup>  
 Perimeter: 7.58 m

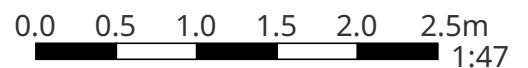


## Bedroom

Width: 2.73 m  
 Length: 3.66 m  
 Area: 9.99 m<sup>2</sup>  
 Perimeter: 12.78 m



THIS FLOORPLAN IS PROVIDED WITHOUT WARRANTY OF ANY KIND. SENSOPIA DISCLAIMS ANY WARRANTY INCLUDING, WITHOUT LIMITATION, SATISFACTORY QUALITY OR ACCURACY OF DIMENSIONS.

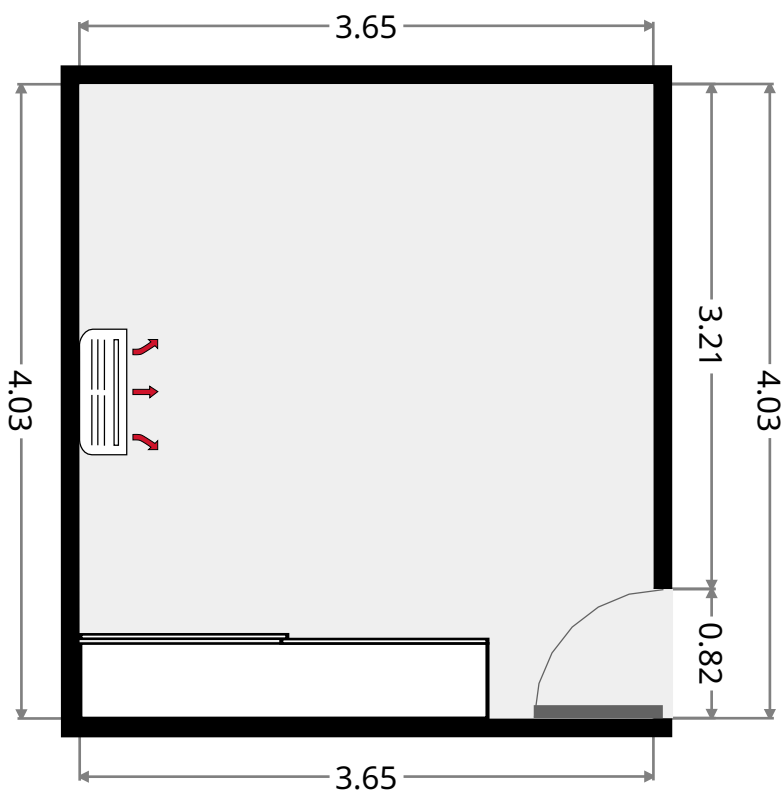
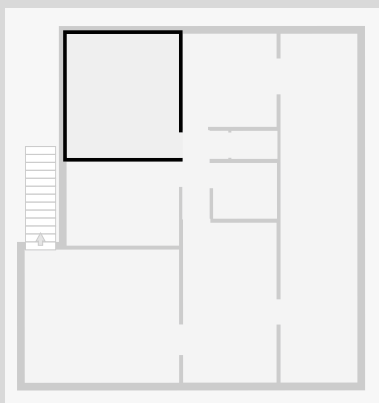




# 113 Hyde Street

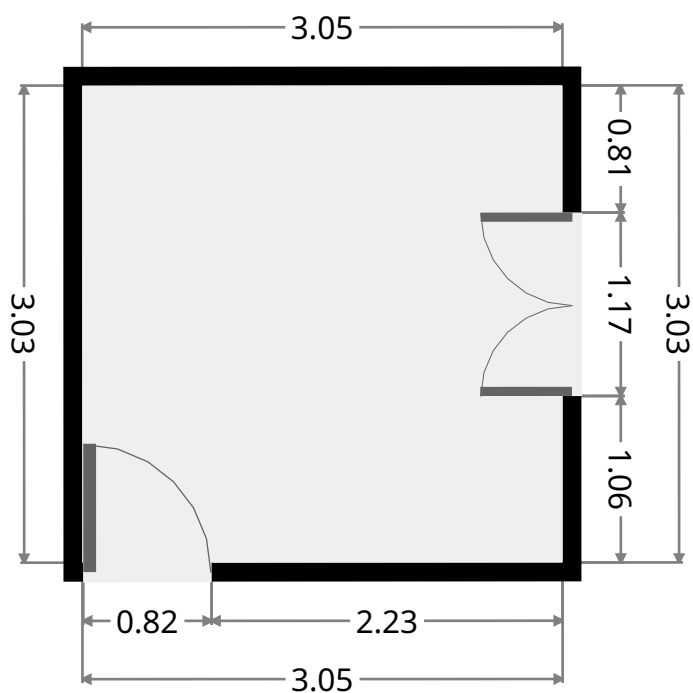
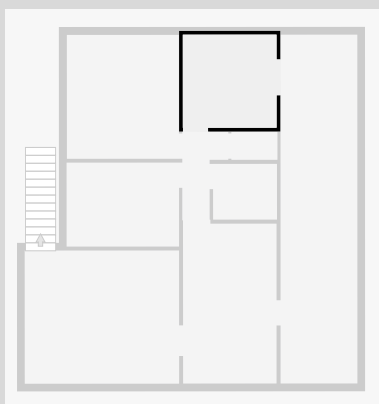
## Bedroom

Width: 3.65 m  
 Length: 4.03 m  
 Area: 14.68 m<sup>2</sup>  
 Perimeter: 15.35 m

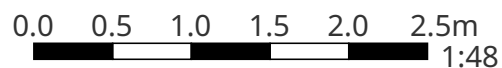


## Bedroom

Width: 3.03 m  
 Length: 3.05 m  
 Area: 9.24 m<sup>2</sup>  
 Perimeter: 12.16 m



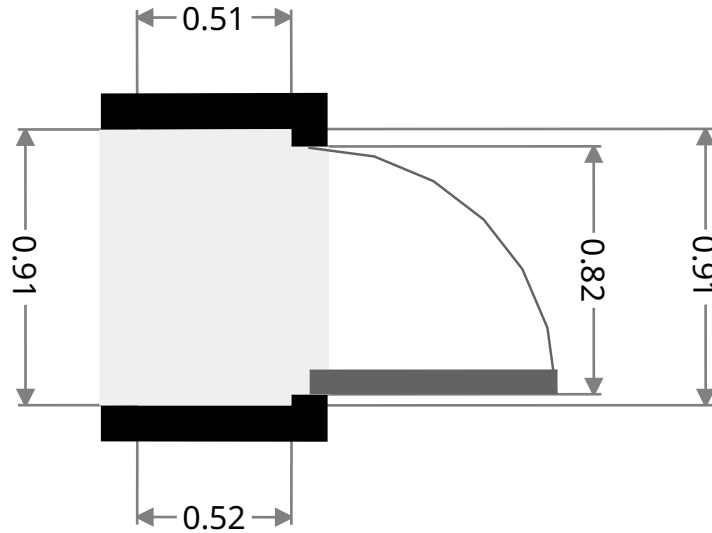
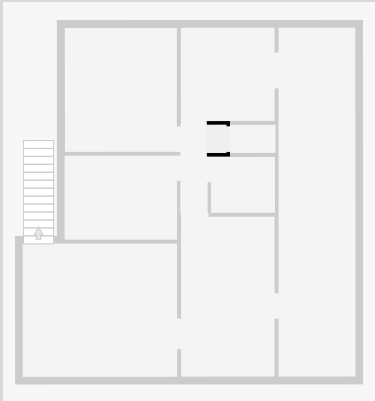
THIS FLOORPLAN IS PROVIDED WITHOUT WARRANTY OF ANY KIND. SENSOPIA DISCLAIMS ANY WARRANTY INCLUDING, WITHOUT LIMITATION, SATISFACTORY QUALITY OR ACCURACY OF DIMENSIONS.



# 113 Hyde Street

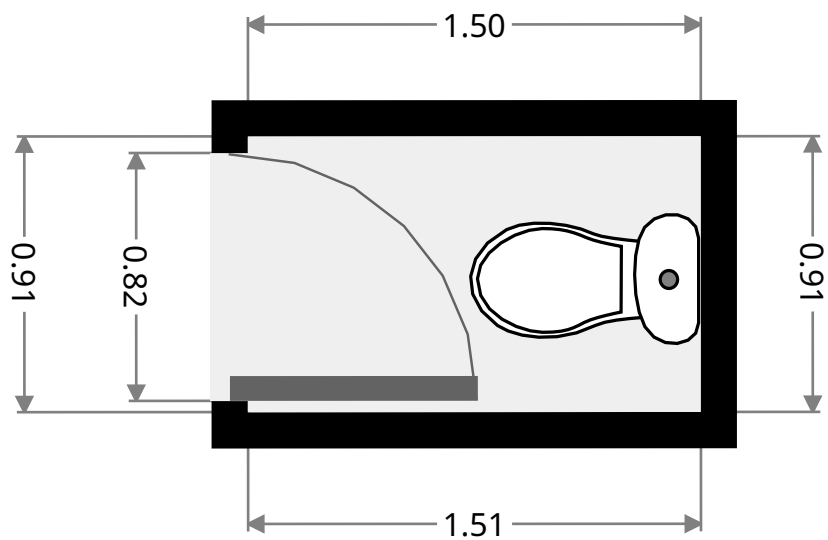
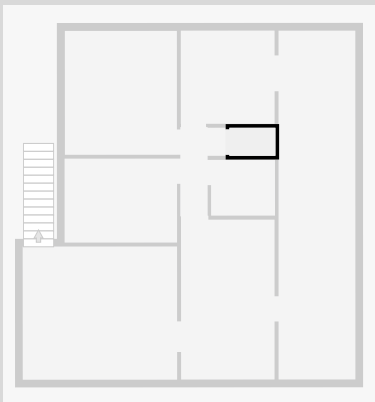
## Hall

Width: 0.51 m  
 Length: 0.91 m  
 Area: 0.47 m<sup>2</sup>  
 Perimeter: 2.85 m



## Toilet / Half Bath

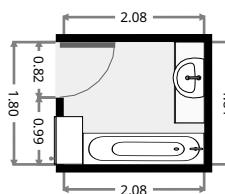
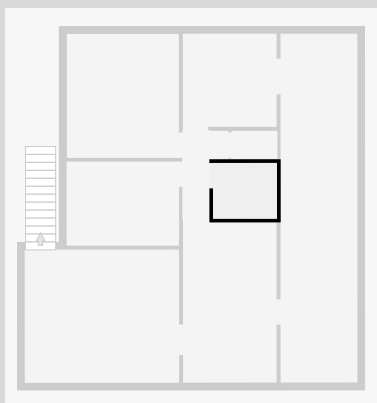
Width: 0.91 m  
 Length: 1.50 m  
 Area: 1.37 m<sup>2</sup>  
 Perimeter: 4.82 m



# 113 Hyde Street

## Bathroom

Width: 1.81 m  
Length: 2.08 m  
Area: 3.77 m<sup>2</sup>  
Perimeter: 7.78 m



## Verandah

Width: 2.50 m  
Length: 11.34 m  
Area: 28.34 m<sup>2</sup>  
Perimeter: 27.68 m

