

113 Cherryfield Road

Created on
2021-09-20

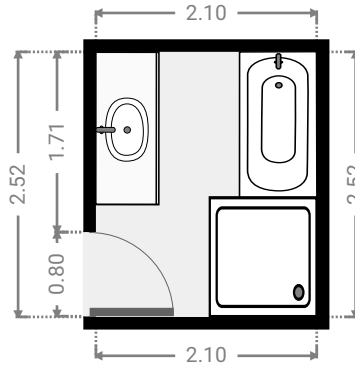
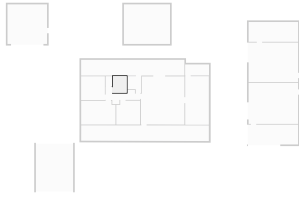
Floors
1

▼ Ground Floor



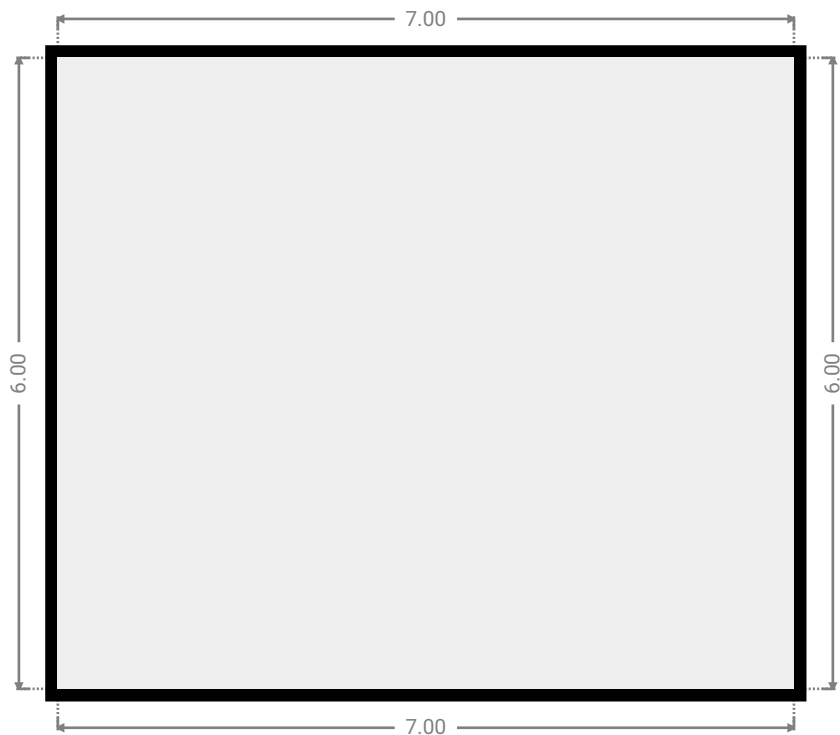
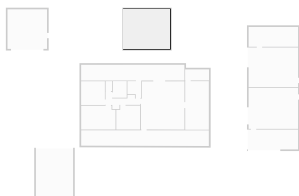
▼ Bathroom
Ground Floor

WIDTH: 2.10 m • LENGTH: 2.52 m
AREA: 5.29 m² • PERIMETER: 9.24 m



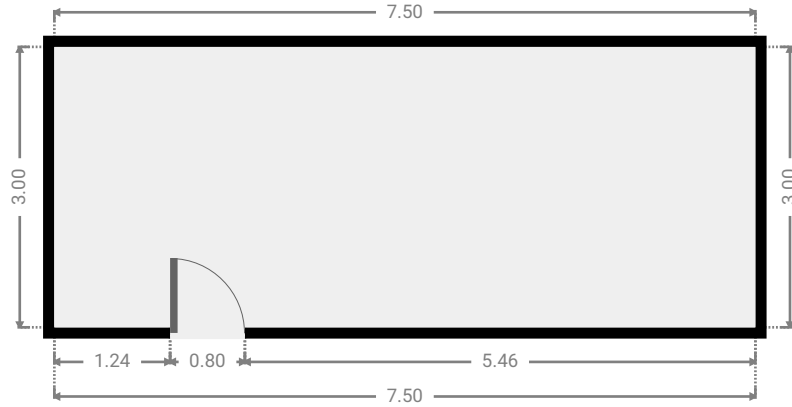
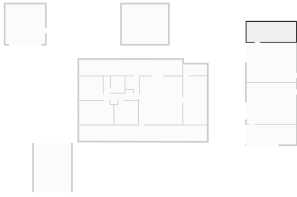
▼ Other
Ground Floor

WIDTH: 7.00 m • LENGTH: 6.00 m
AREA: 42.00 m² • PERIMETER: 26.00 m



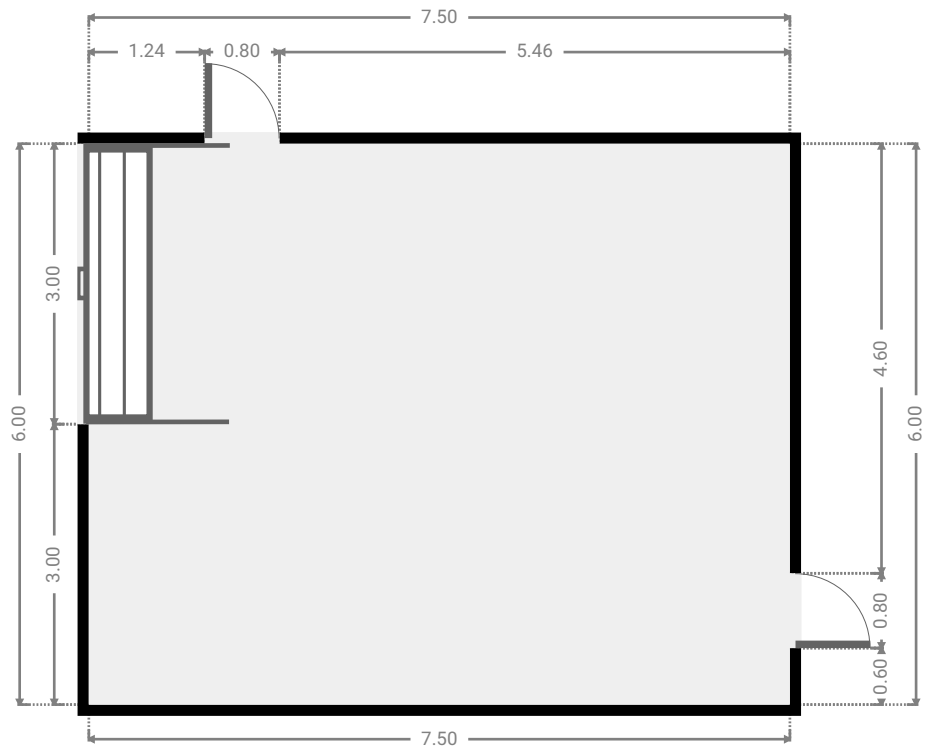
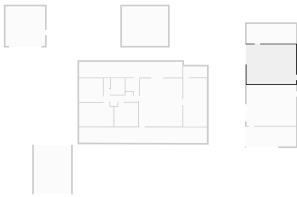
▼ Other
Ground Floor

WIDTH: 7.50 m • LENGTH: 3.00 m
AREA: 22.50 m² • PERIMETER: 21.00 m



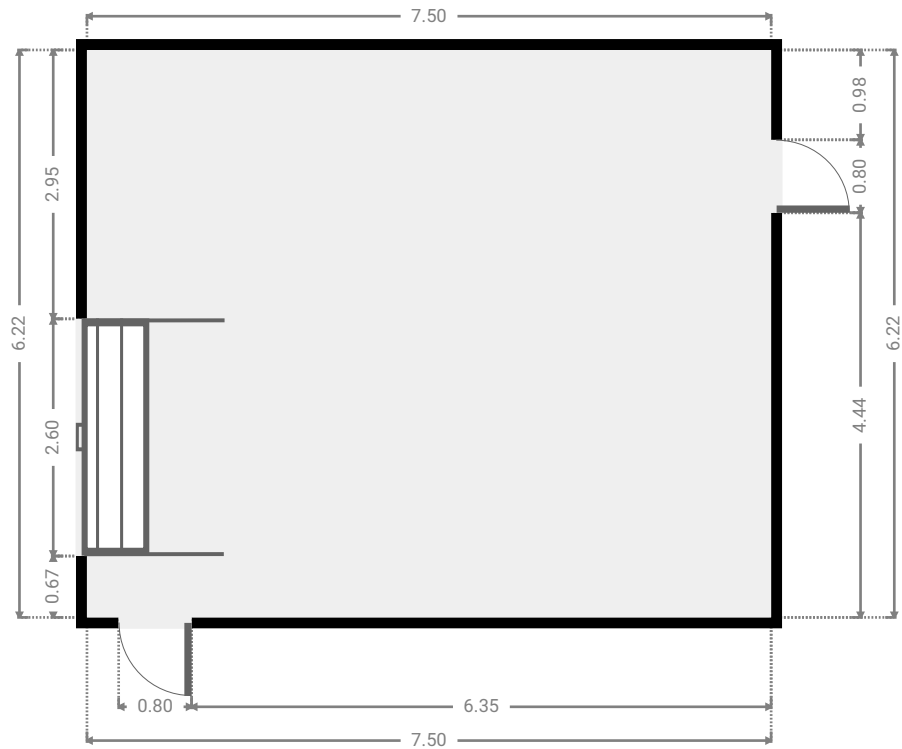
▼ Other
Ground Floor

WIDTH: 7.50 m • LENGTH: 6.00 m
AREA: 45.00 m² • PERIMETER: 27.00 m



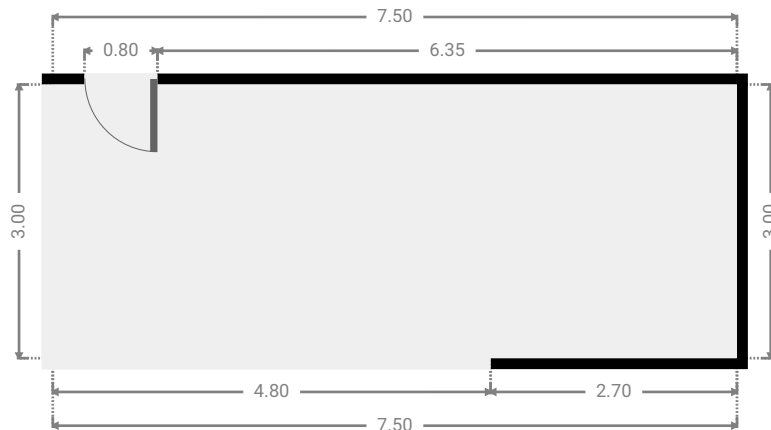
▼ **Garage**
Ground Floor

WIDTH: 7.50 m • LENGTH: 6.22 m
AREA: 46.65 m² • PERIMETER: 27.44 m



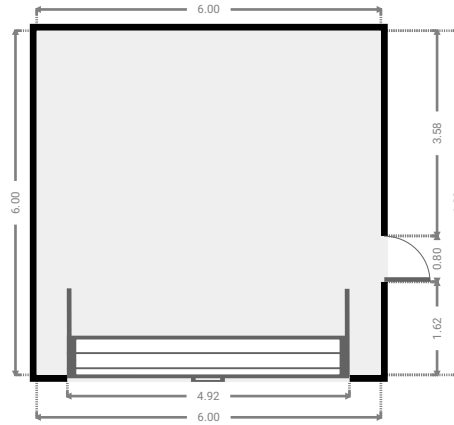
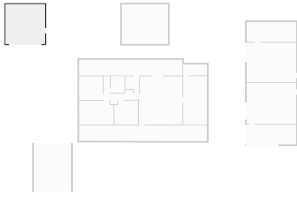
▼ **Garage**
Ground Floor

WIDTH: 7.50 m • LENGTH: 3.00 m
AREA: 22.50 m² • PERIMETER: 21.00 m



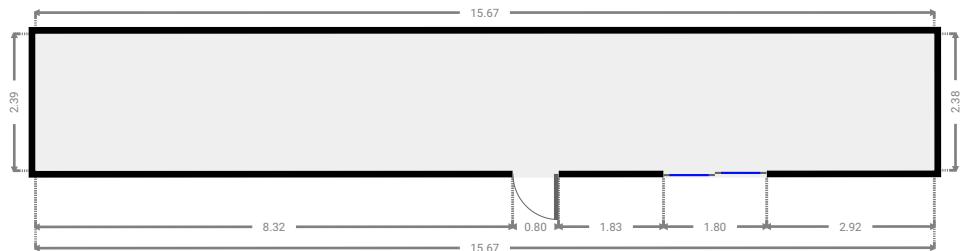
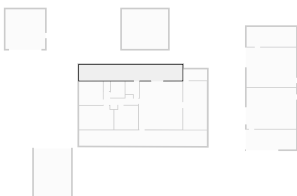
▼ Other
Ground Floor

WIDTH: 6.00 m • LENGTH: 6.00 m
AREA: 36.00 m² • PERIMETER: 24.00 m



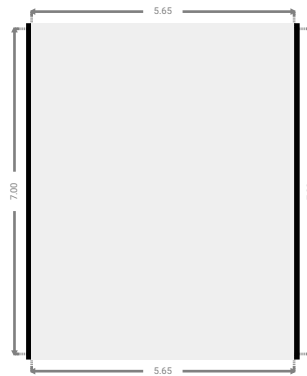
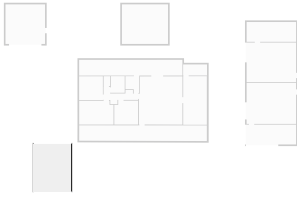
▼ Other
Ground Floor

WIDTH: 15.67 m • LENGTH: 2.39 m
AREA: 37.34 m² • PERIMETER: 36.10 m



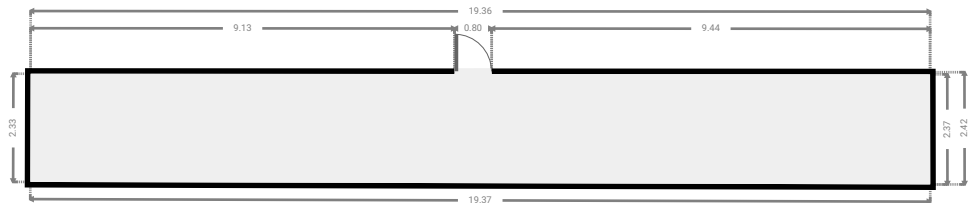
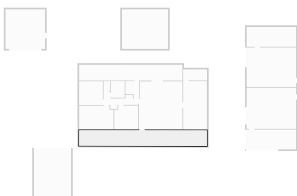
▼ **Carport**
Ground Floor

WIDTH: 5.65 m • LENGTH: 7.00 m
AREA: 39.55 m² • PERIMETER: 25.30 m



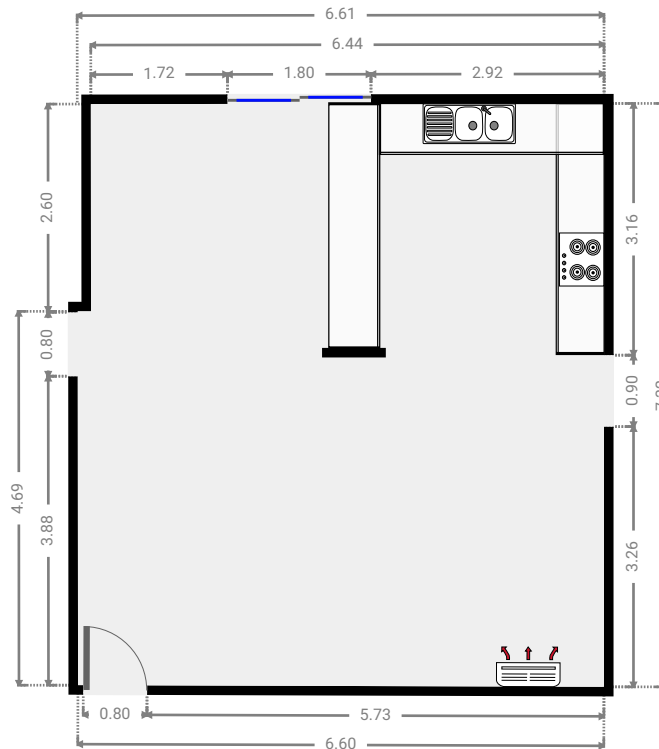
▼ **Other**
Ground Floor

WIDTH: 19.37 m • LENGTH: 2.42 m
AREA: 45.50 m² • PERIMETER: 43.44 m



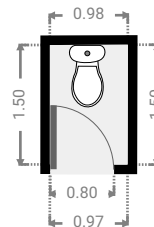
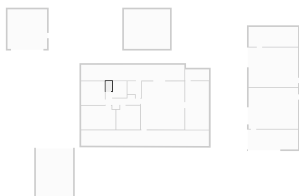
▼ Living/ Kitchen/ Dining
Ground Floor

WIDTH: 6.61 m • LENGTH: 7.32 m
AREA: 47.81 m² • PERIMETER: 27.82 m



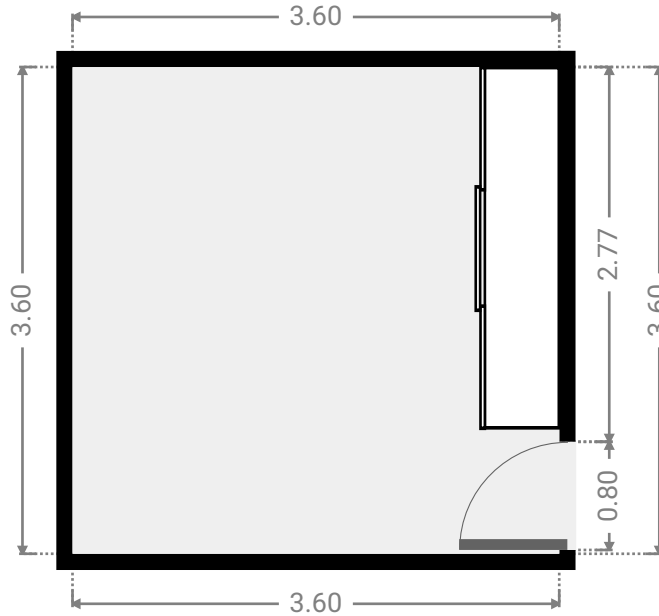
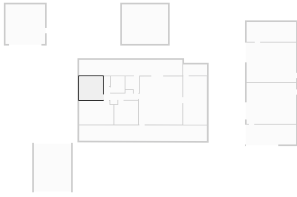
▼ Toilet
Ground Floor

WIDTH: 0.98 m • LENGTH: 1.50 m
AREA: 1.47 m² • PERIMETER: 4.96 m



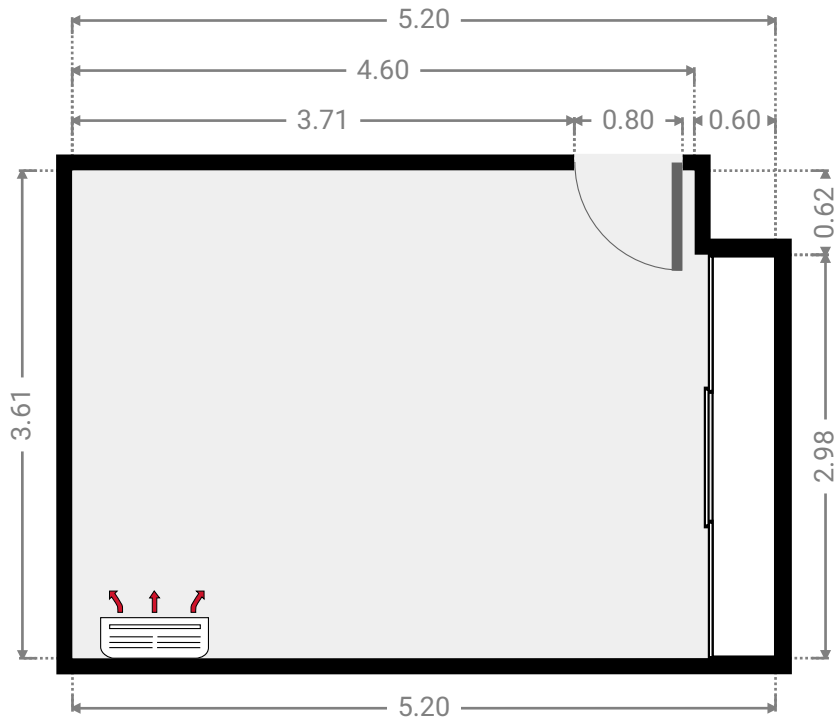
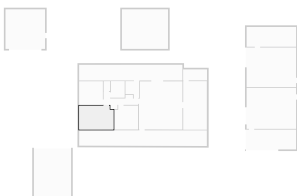
▼ **Bedroom**
Ground Floor

WIDTH: 3.60 m • LENGTH: 3.60 m
AREA: 12.96 m² • PERIMETER: 14.40 m



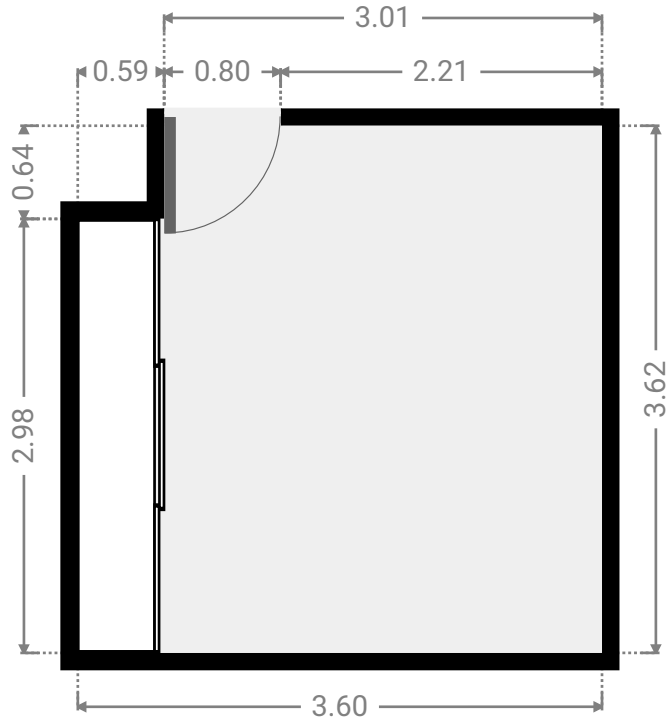
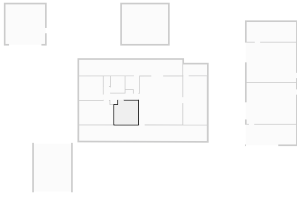
▼ **Bedroom**
Ground Floor

WIDTH: 5.20 m • LENGTH: 3.61 m
AREA: 18.38 m² • PERIMETER: 17.61 m



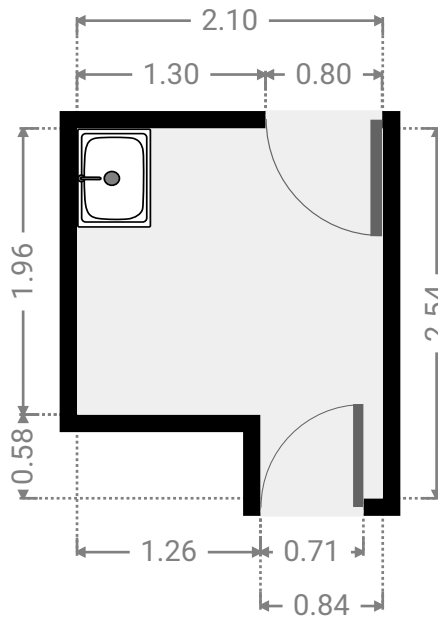
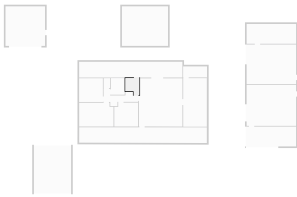
▼ **Bedroom**
Ground Floor

WIDTH: 3.60 m • LENGTH: 3.62 m
AREA: 12.65 m² • PERIMETER: 14.44 m



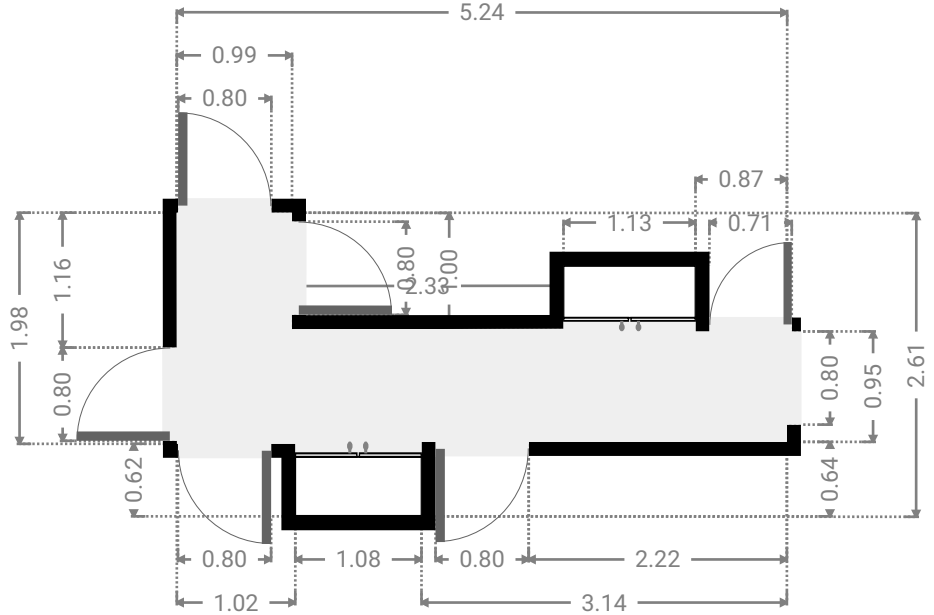
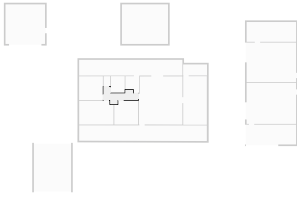
▼ **Laundry Room**
Ground Floor

WIDTH: 2.10 m • LENGTH: 2.54 m
AREA: 4.61 m² • PERIMETER: 9.28 m



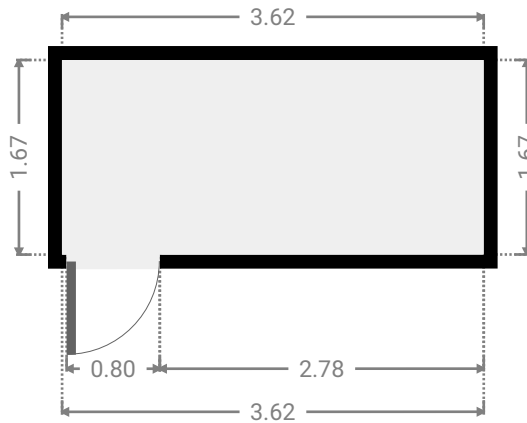
▼ **Hall**
Ground Floor

WIDTH: 5.24 m • LENGTH: 2.61 m
AREA: 7.37 m² • PERIMETER: 16.78 m



▼ **Closet**
Ground Floor

WIDTH: 3.62 m • LENGTH: 1.67 m
AREA: 6.05 m² • PERIMETER: 10.58 m



▼ Living Room
Ground Floor

WIDTH: 3.59 m • LENGTH: 7.37 m
AREA: 26.40 m² • PERIMETER: 21.90 m

