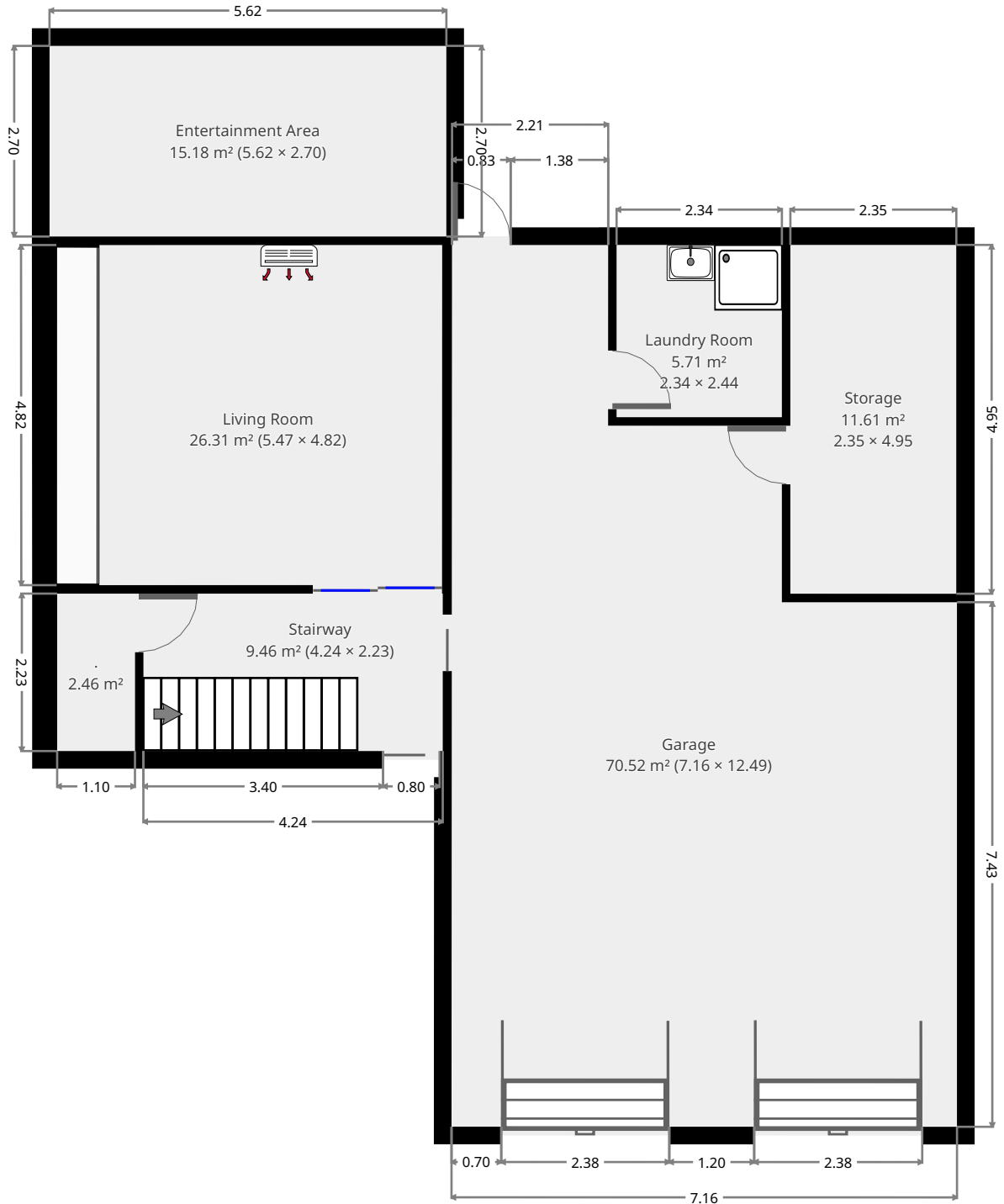


112 Cruikshank Street

Ground Floor



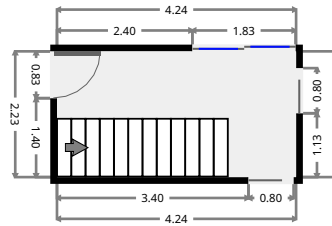
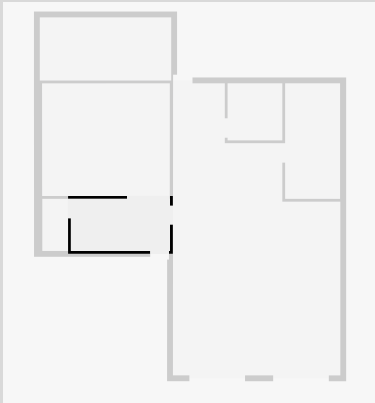
THIS FLOORPLAN IS PROVIDED WITHOUT WARRANTY OF ANY KIND. SENSOPIA DISCLAIMS ANY WARRANTY INCLUDING, WITHOUT LIMITATION, SATISFACTORY QUALITY OR ACCURACY OF DIMENSIONS.



112 Cruikshank Street

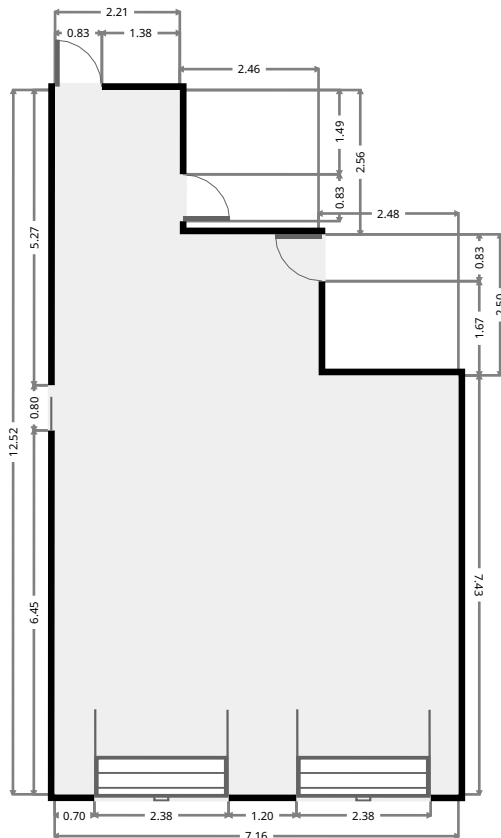
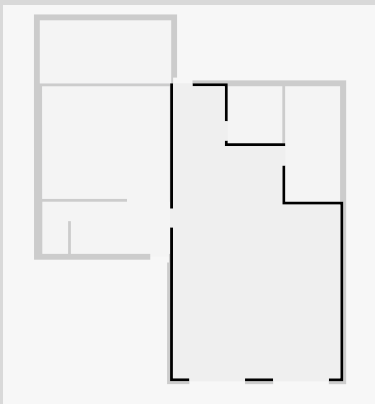
Stairway

Width: 2.23 m
Length: 4.24 m
Area: 9.46 m²
Perimeter: 12.94 m



Garage

Width: 7.16 m
Length: 12.49 m
Area: 70.52 m²
Perimeter: 39.29 m

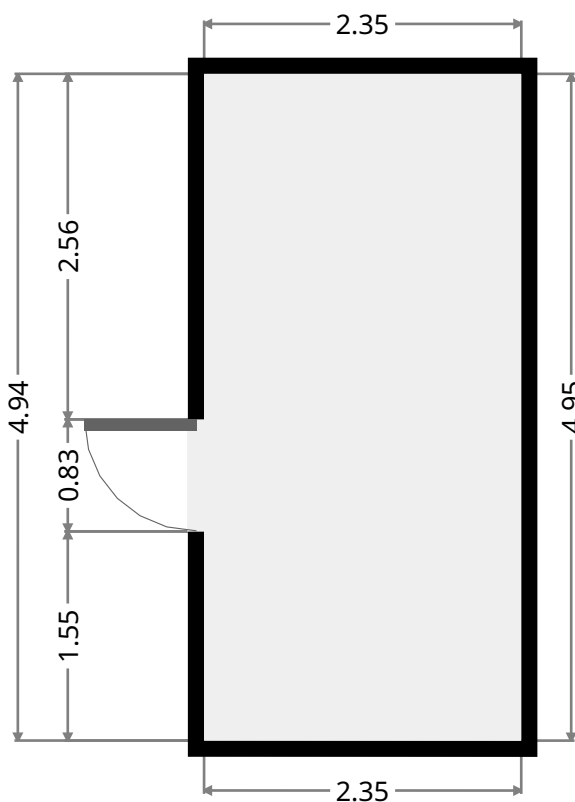
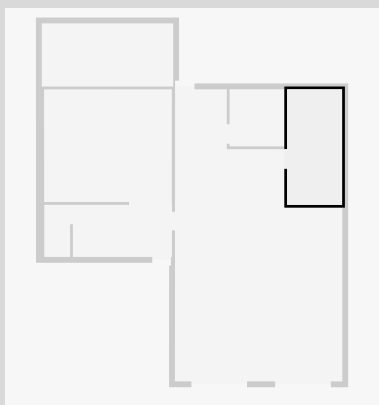


THIS FLOORPLAN IS PROVIDED WITHOUT WARRANTY OF ANY KIND. SENSOPIA DISCLAIMS ANY WARRANTY INCLUDING, WITHOUT LIMITATION, SATISFACTORY QUALITY OR ACCURACY OF DIMENSIONS.

112 Cruikshank Street

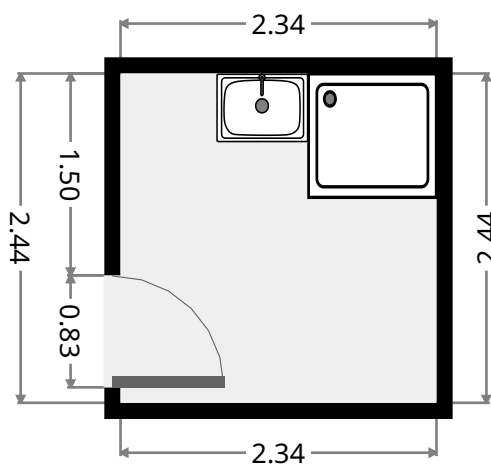
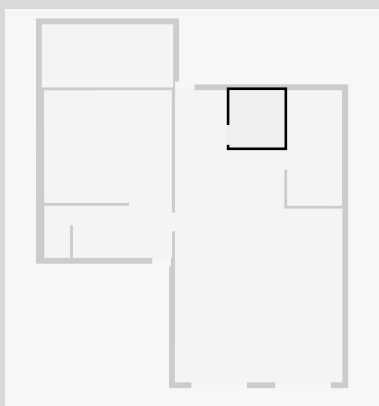
Storage

Width: 2.35 m
Length: 4.95 m
Area: 11.61 m²
Perimeter: 14.58 m



Laundry Room

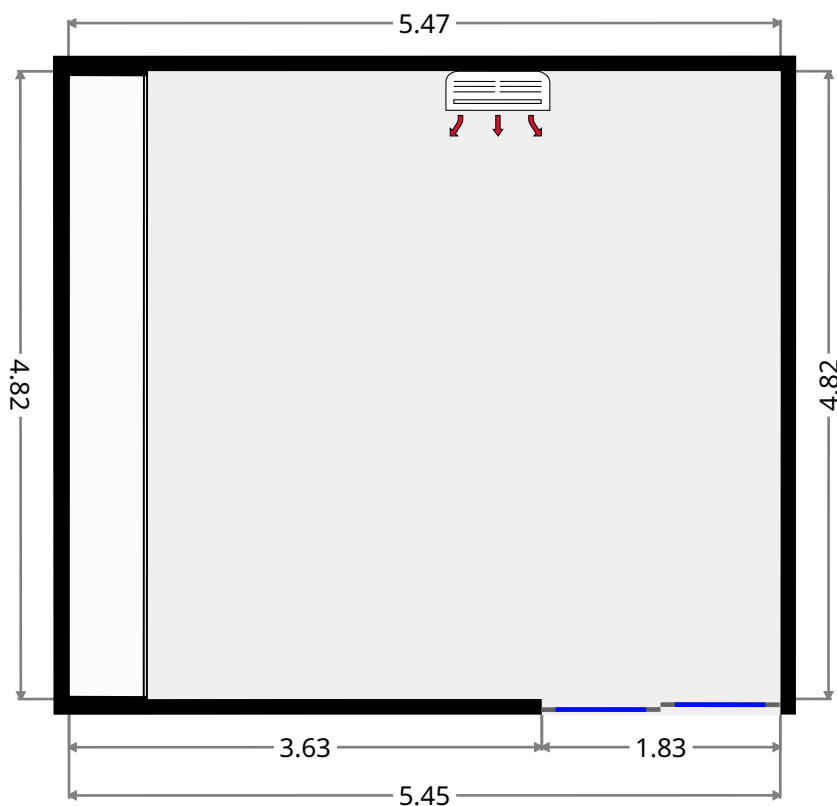
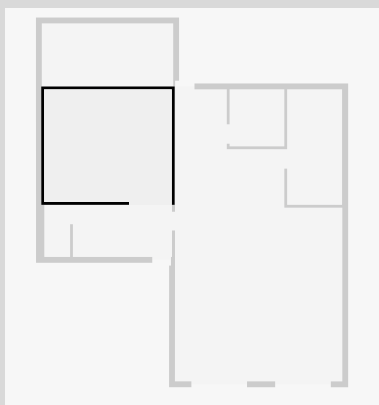
Width: 2.34 m
Length: 2.44 m
Area: 5.71 m²
Perimeter: 9.56 m



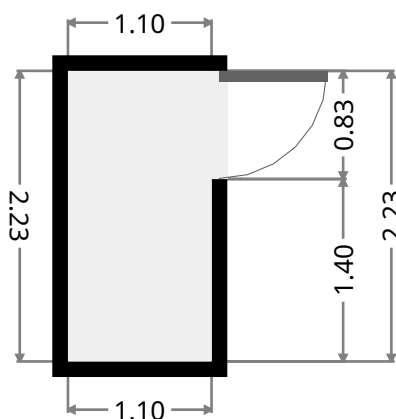
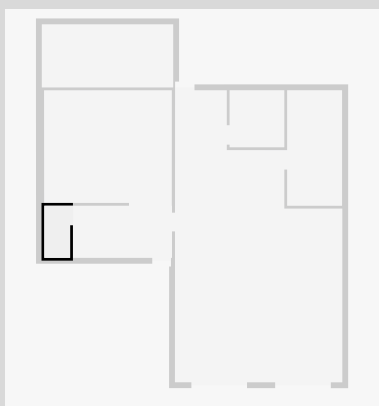
112 Cruikshank Street

Living Room

Width: 4.82 m
 Length: 5.47 m
 Area: 26.31 m²
 Perimeter: 20.56 m



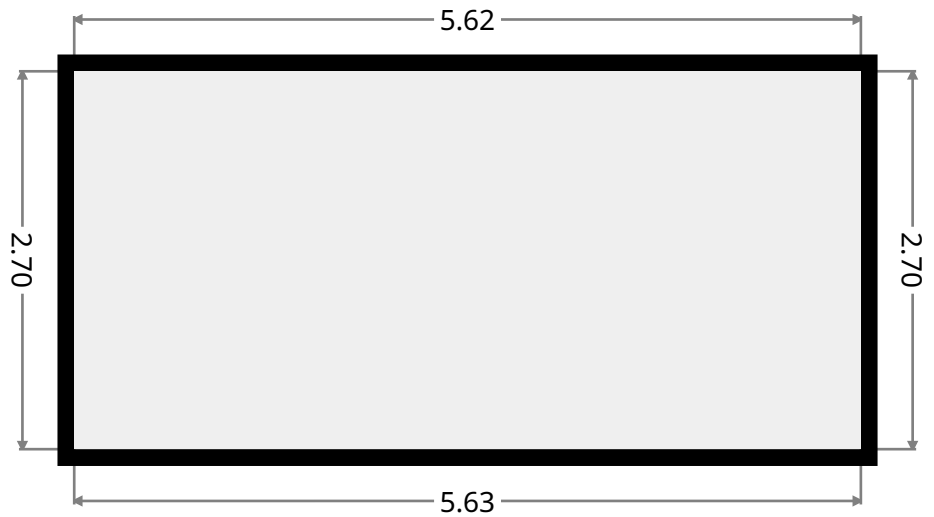
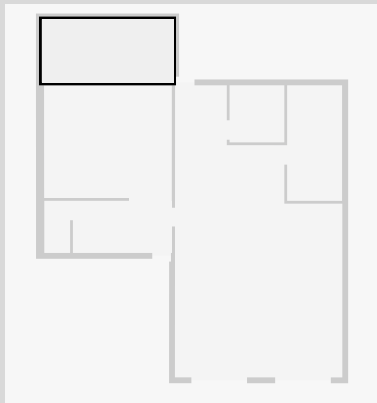
•
 Width: 1.10 m
 Length: 2.23 m
 Area: 2.46 m²
 Perimeter: 6.66 m



112 Cruikshank Street

Entertainment Area

Width: 2.70 m
Length: 5.62 m
Area: 15.18 m²
Perimeter: 16.64 m



112 Cruikshank Street

1st Floor



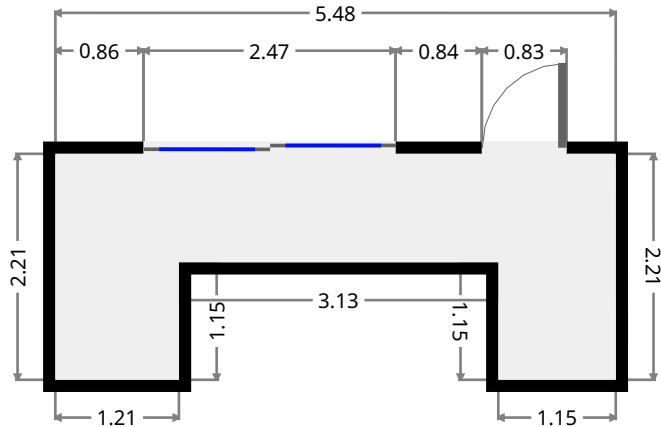
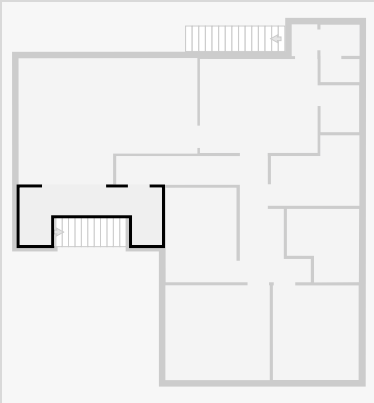
THIS FLOORPLAN IS PROVIDED WITHOUT WARRANTY OF ANY KIND. SENSOPIA DISCLAIMS ANY WARRANTY INCLUDING, WITHOUT LIMITATION, SATISFACTORY QUALITY OR ACCURACY OF DIMENSIONS.



112 Cruikshank Street

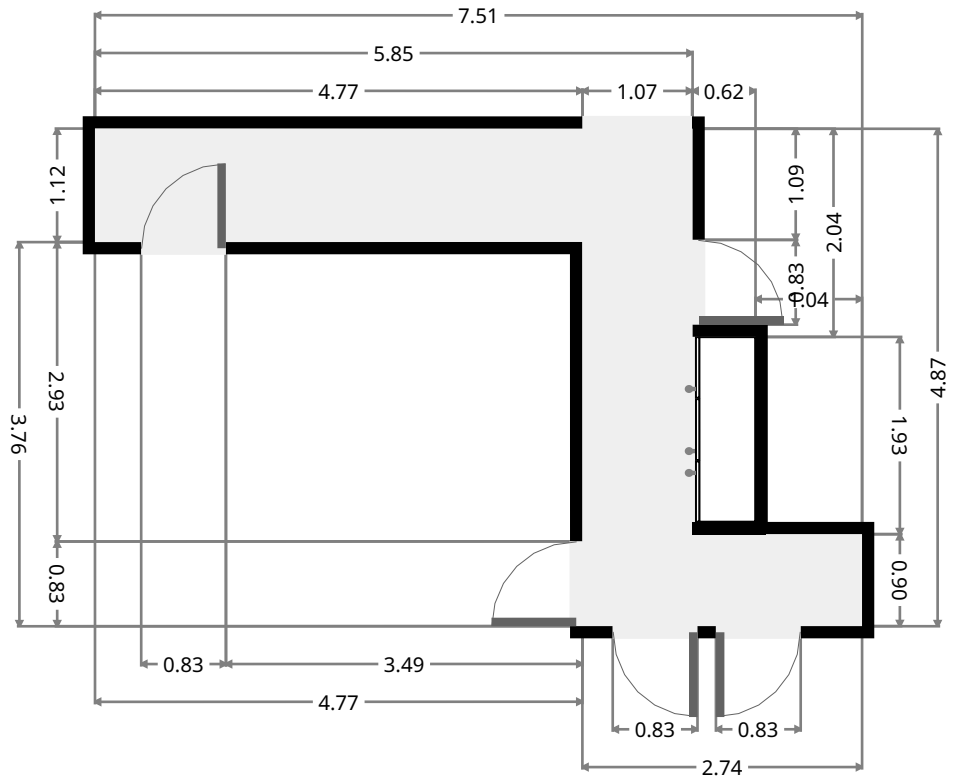
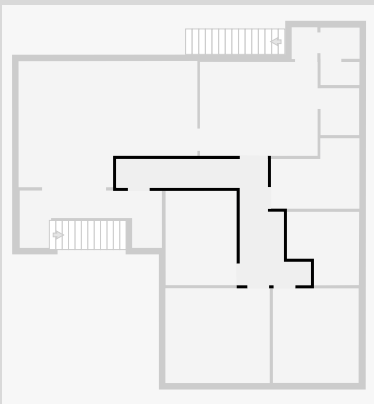
Other

Width: 2.21 m
Length: 5.48 m
Area: 8.54 m²
Perimeter: 17.70 m



Hall

Width: 4.87 m
Length: 7.51 m
Area: 13.24 m²
Perimeter: 24.77 m

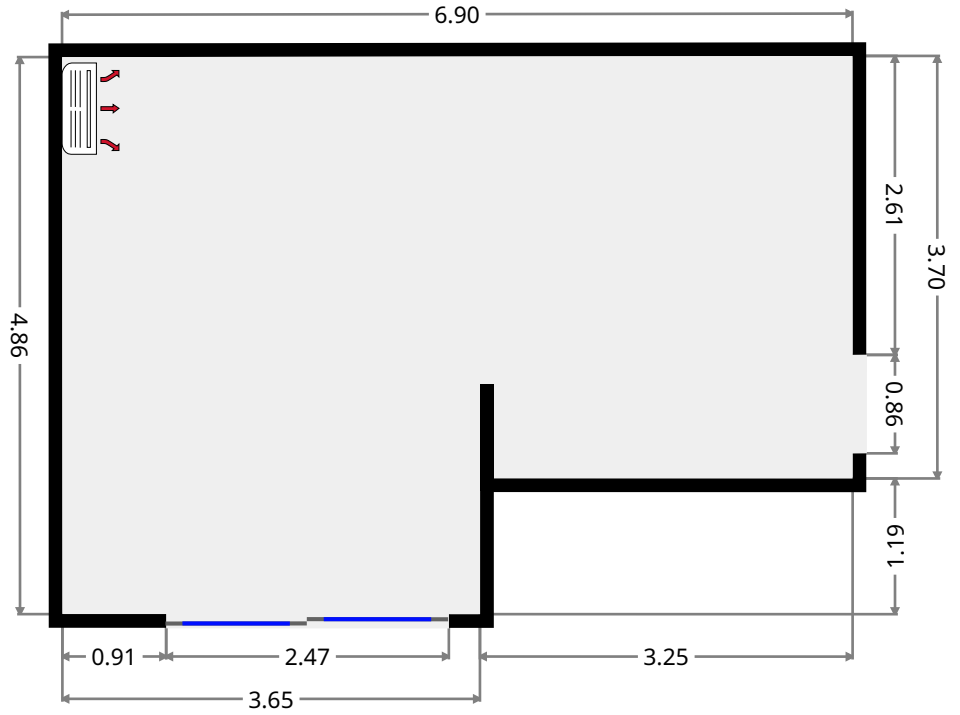
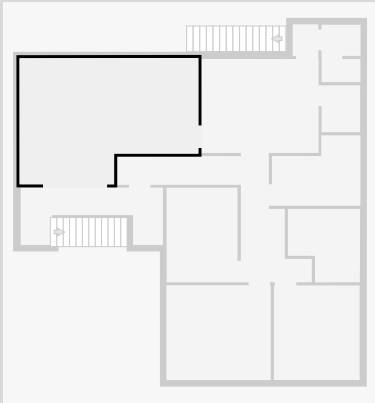


THIS FLOORPLAN IS PROVIDED WITHOUT WARRANTY OF ANY KIND. SENSOPIA DISCLAIMS ANY WARRANTY INCLUDING, WITHOUT LIMITATION, SATISFACTORY QUALITY OR ACCURACY OF DIMENSIONS.

112 Cruikshank Street

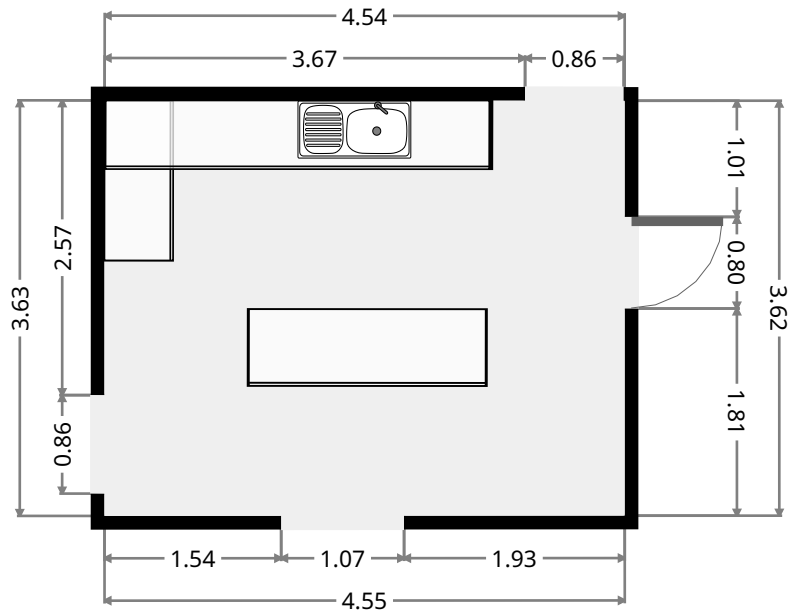
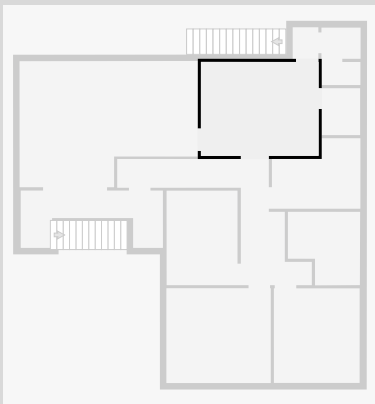
Living Room

Width: 4.86 m
 Length: 6.90 m
 Area: 29.76 m²
 Perimeter: 23.55 m



Kitchen

Width: 3.62 m
 Length: 4.54 m
 Area: 16.47 m²
 Perimeter: 16.34 m



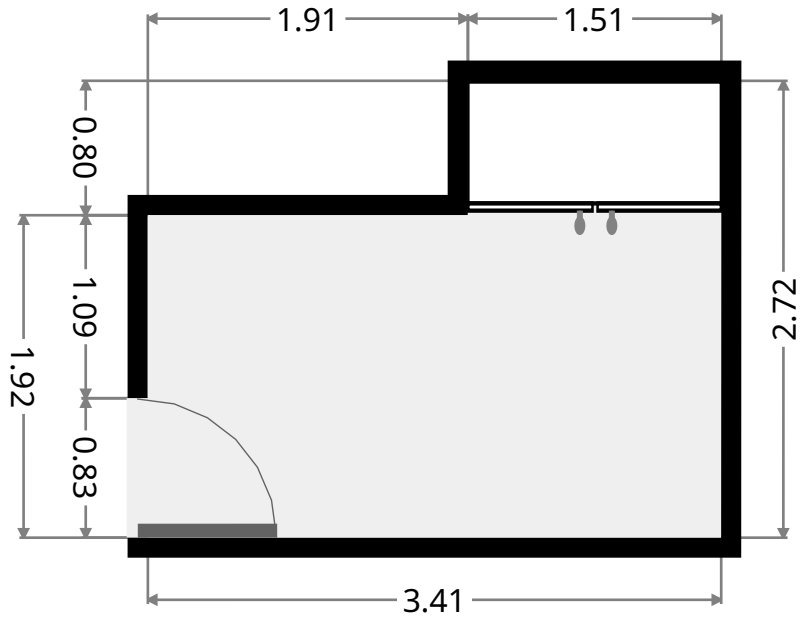
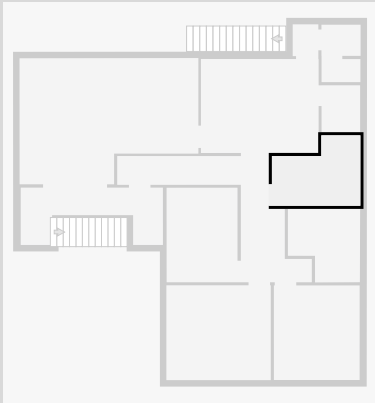
THIS FLOORPLAN IS PROVIDED WITHOUT WARRANTY OF ANY KIND. SENSOPIA DISCLAIMS ANY WARRANTY INCLUDING, WITHOUT LIMITATION, SATISFACTORY QUALITY OR ACCURACY OF DIMENSIONS.



112 Cruikshank Street

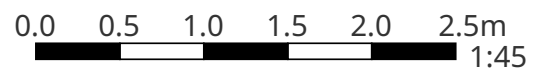
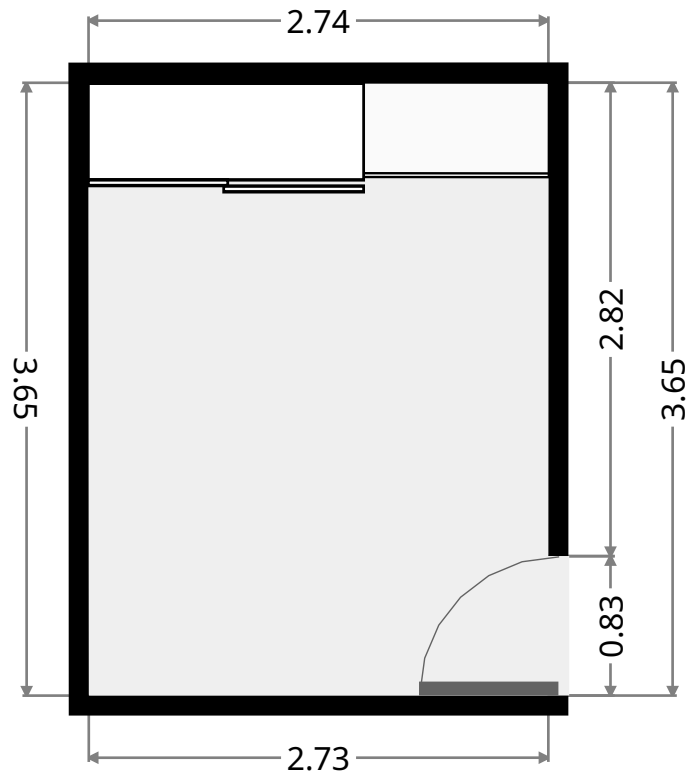
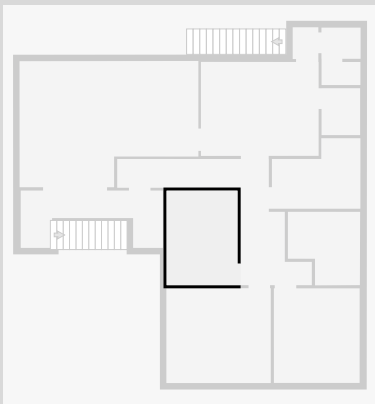
Bedroom

Width: 2.72 m
 Length: 3.41 m
 Area: 7.76 m²
 Perimeter: 12.27 m



Bedroom

Width: 2.74 m
 Length: 3.65 m
 Area: 9.99 m²
 Perimeter: 12.77 m

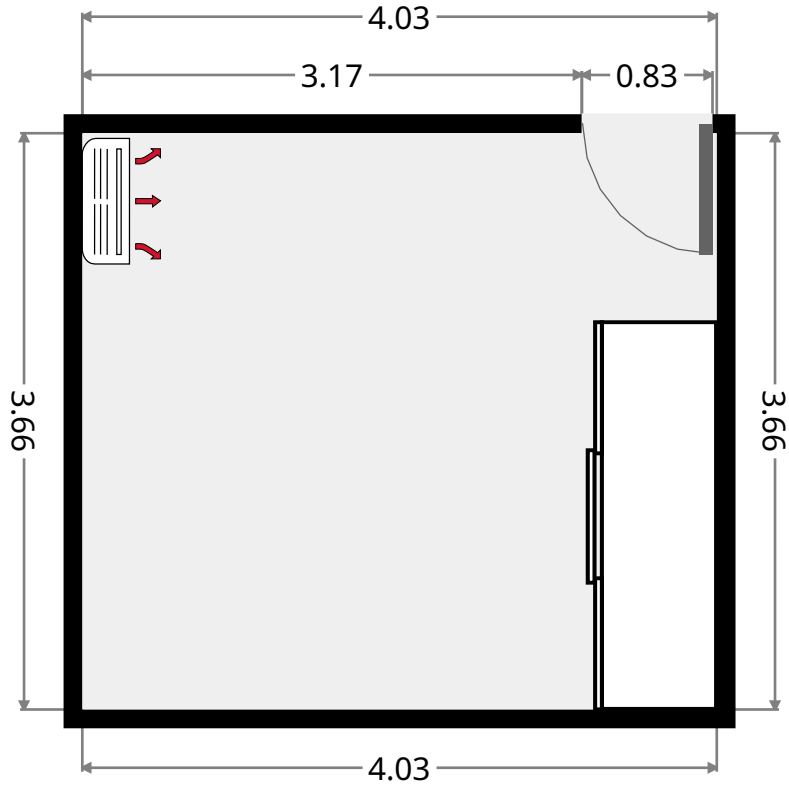
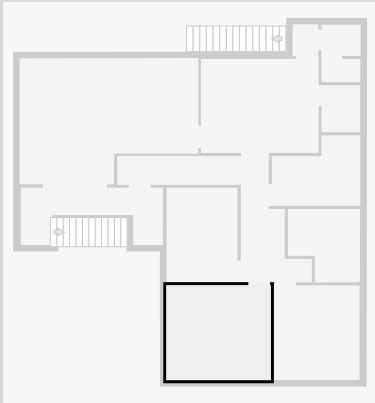


THIS FLOORPLAN IS PROVIDED WITHOUT WARRANTY OF ANY KIND. SENSOPIA DISCLAIMS ANY WARRANTY INCLUDING, WITHOUT LIMITATION, SATISFACTORY QUALITY OR ACCURACY OF DIMENSIONS.

112 Cruikshank Street

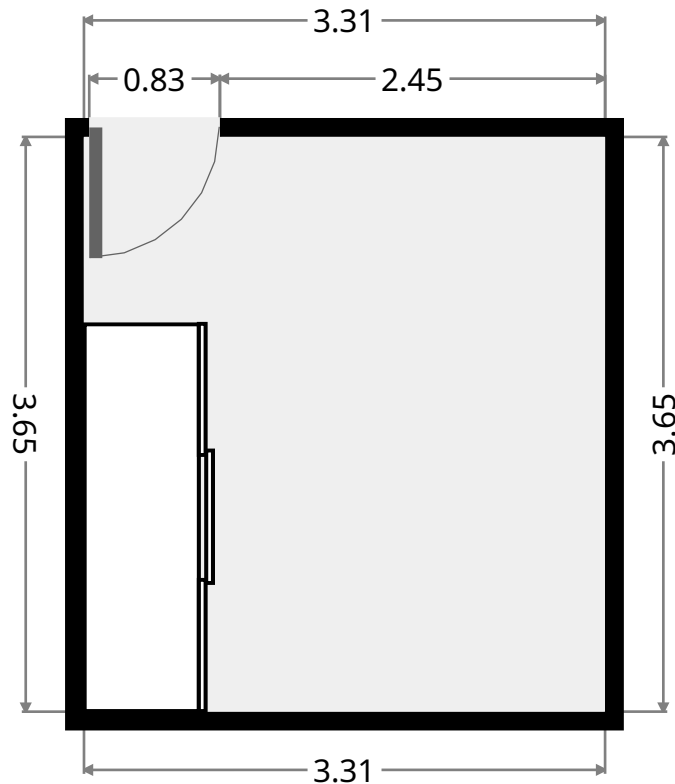
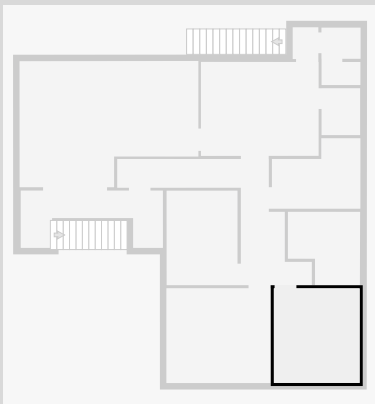
Master Bedroom

Width: 3.66 m
 Length: 4.03 m
 Area: 14.75 m²
 Perimeter: 15.38 m

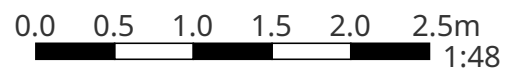


Bedroom

Width: 3.31 m
 Length: 3.65 m
 Area: 12.08 m²
 Perimeter: 13.92 m



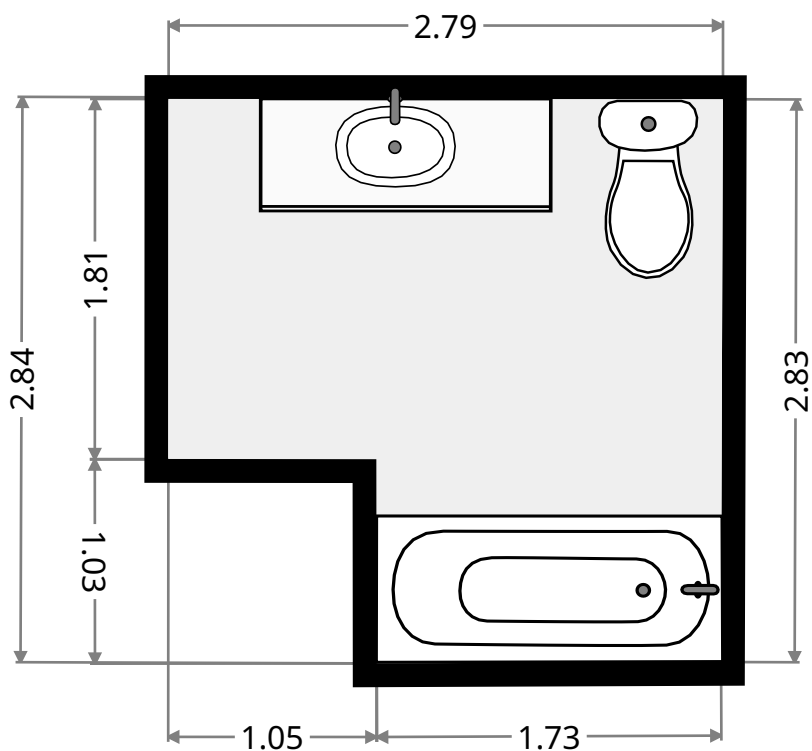
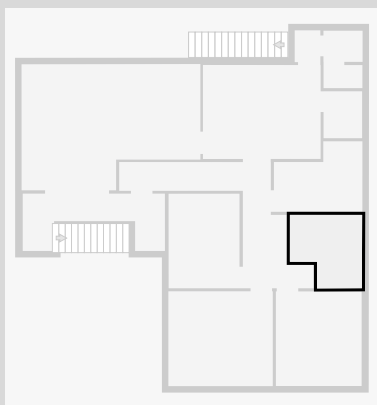
THIS FLOORPLAN IS PROVIDED WITHOUT WARRANTY OF ANY KIND. SENSOPIA DISCLAIMS ANY WARRANTY INCLUDING, WITHOUT LIMITATION, SATISFACTORY QUALITY OR ACCURACY OF DIMENSIONS.



112 Cruikshank Street

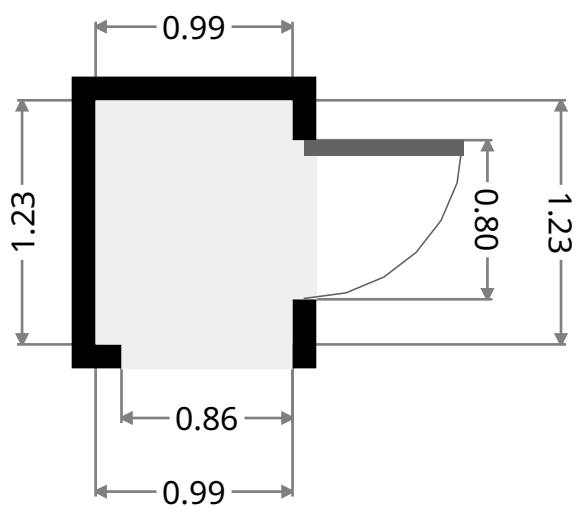
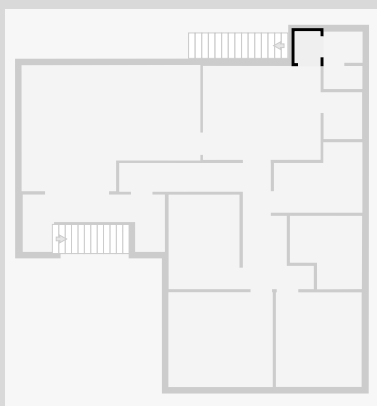
Bathroom

Width: 2.79 m
Length: 2.84 m
Area: 6.82 m²
Perimeter: 11.23 m



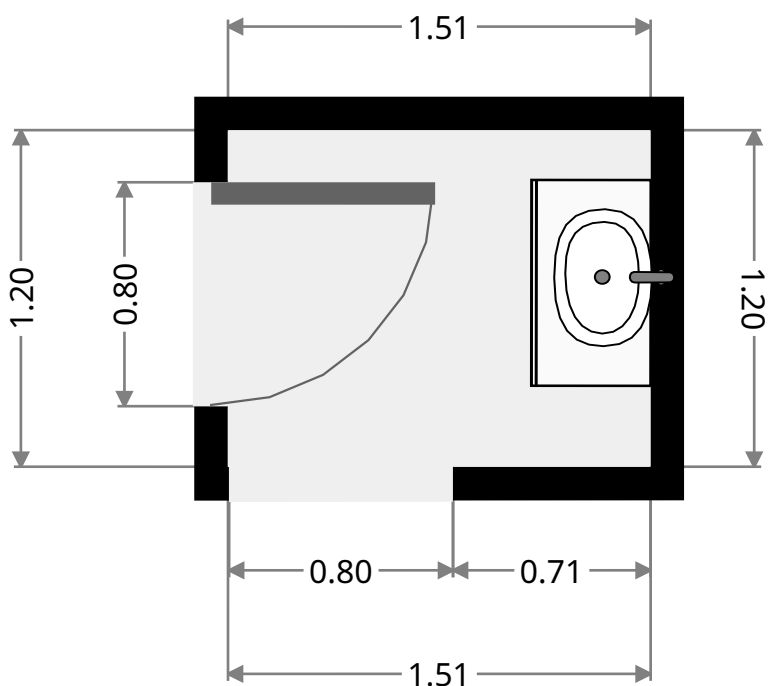
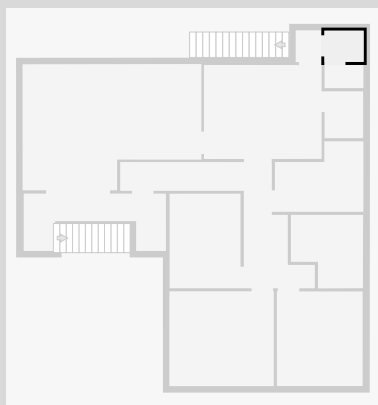
Hall

Width: 0.99 m
Length: 1.23 m
Area: 1.22 m²
Perimeter: 4.43 m



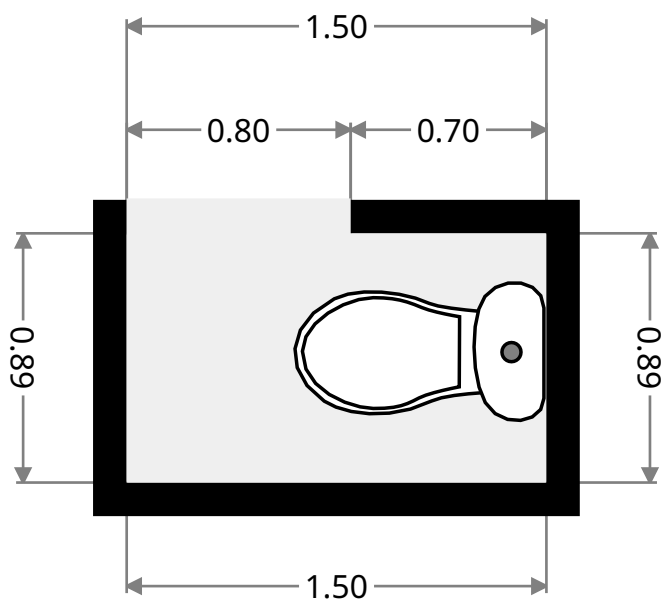
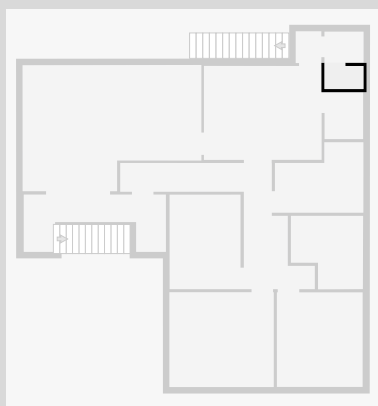
112 Cruikshank Street

•
 Width: 1.20 m
 Length: 1.51 m
 Area: 1.82 m²
 Perimeter: 5.42 m



Toilet

Width: 0.89 m
 Length: 1.50 m
 Area: 1.34 m²
 Perimeter: 4.78 m



112 Cruikshank Street

Pantry

Width: 1.49 m
Length: 1.81 m
Area: 2.70 m²
Perimeter: 6.60 m

