

11 Wheeler Avenue

SUBMITTED BY

Ray White Rockhampton Casey
stockers@cqoz.com

CREATED ON

2022-08-17

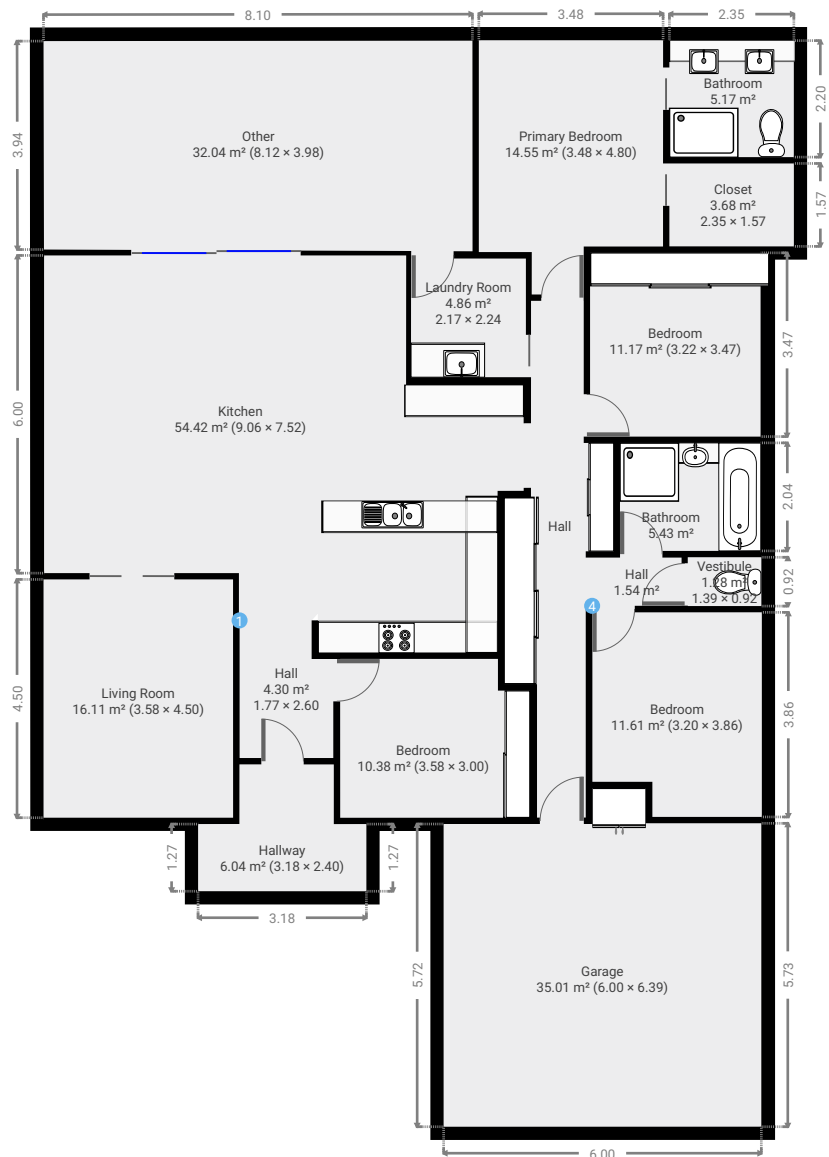
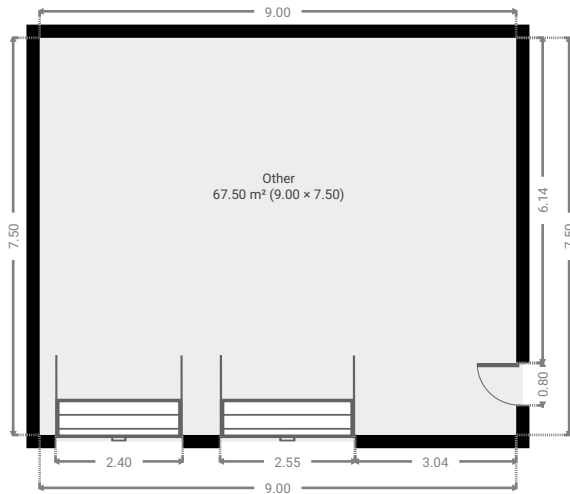
Floors

1

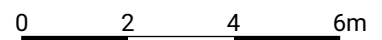
11 Wheeler Court

FLOORS: 1

▼ Ground Floor

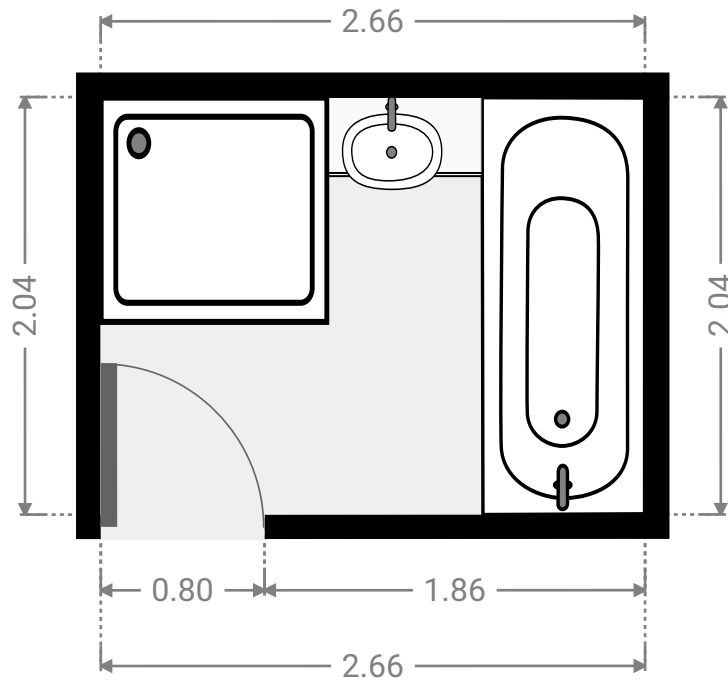
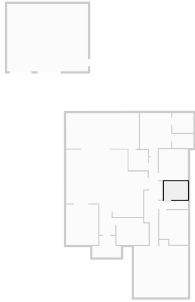


THIS FLOORPLAN IS PROVIDED WITHOUT WARRANTY OF ANY KIND. SENSOPIA DISCLAIMS ANY WARRANTY INCLUDING, WITHOUT LIMITATION, SATISFACTORY QUALITY OR ACCURACY OF DIMENSIONS.



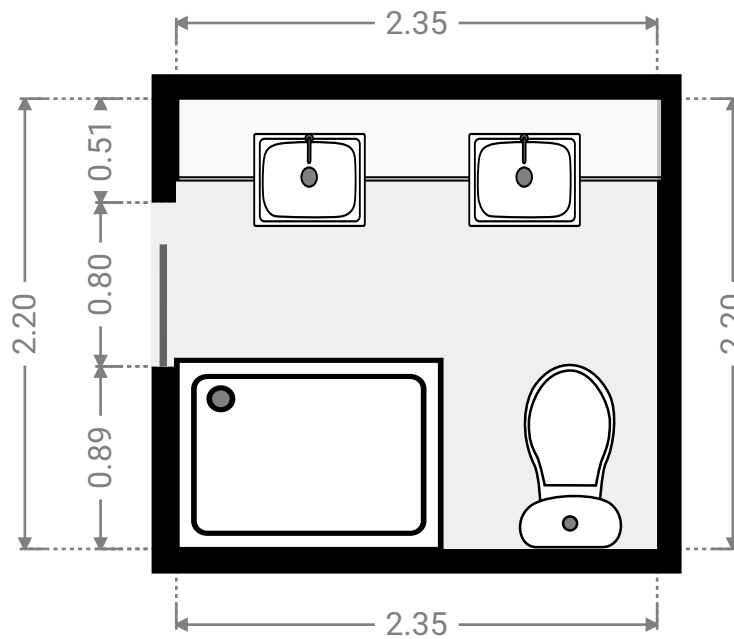
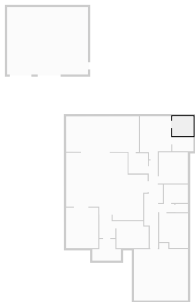
▼ Bathroom Ground Floor

WIDTH: 2.66 m • LENGTH: 2.04 m
AREA: 5.43 m² • PERIMETER: 9.40 m



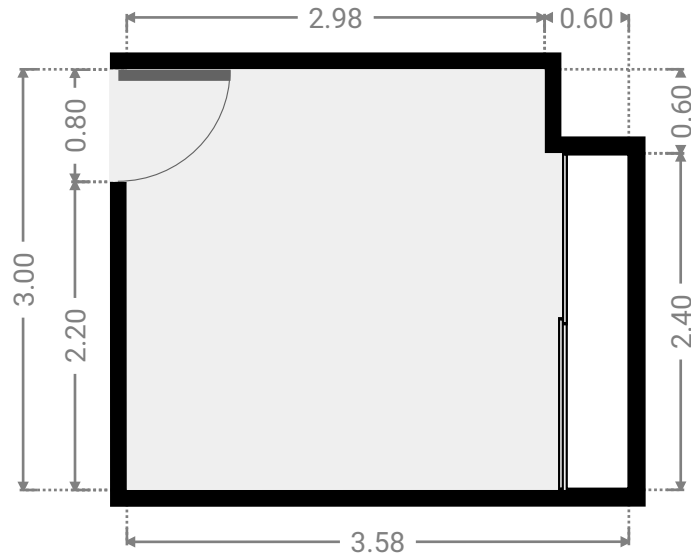
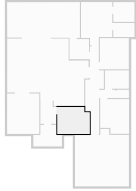
▼ Bathroom Ground Floor

WIDTH: 2.35 m • LENGTH: 2.20 m
AREA: 5.17 m² • PERIMETER: 9.10 m



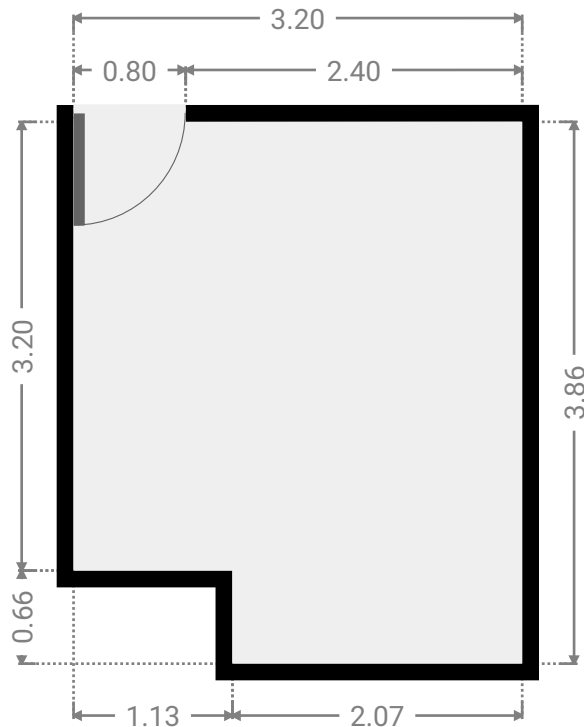
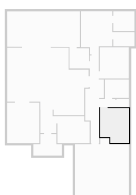
▼ Bedroom Ground Floor

WIDTH: 3.58 m • LENGTH: 3.00 m
AREA: 10.38 m² • PERIMETER: 13.16 m



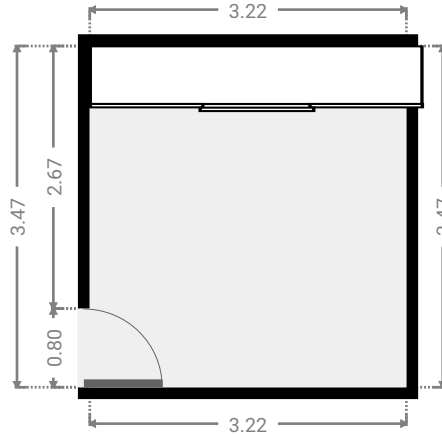
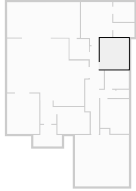
▼ Bedroom Ground Floor

WIDTH: 3.20 m • LENGTH: 3.86 m
AREA: 11.61 m² • PERIMETER: 14.13 m



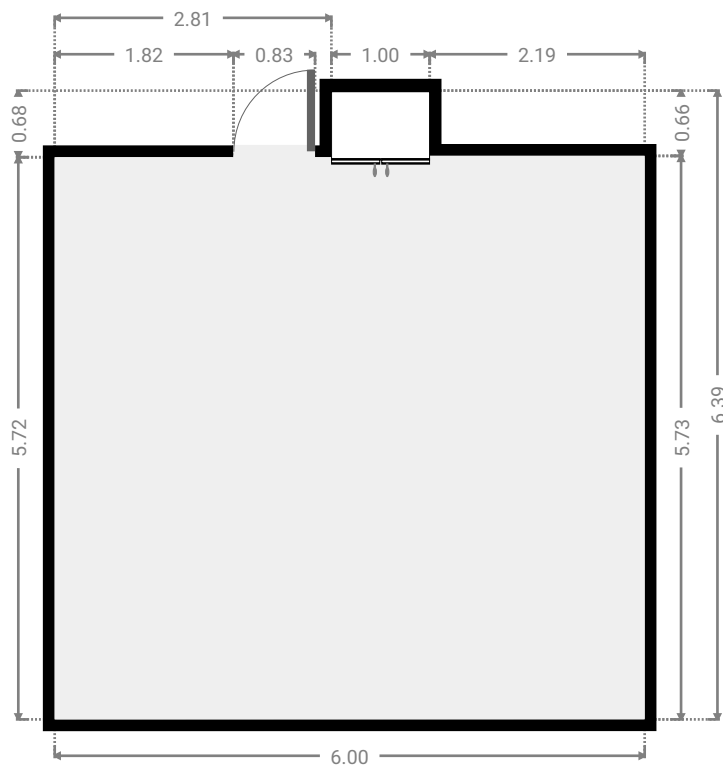
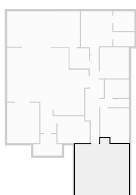
▼ Bedroom Ground Floor

WIDTH: 3.22 m • LENGTH: 3.47 m
AREA: 11.17 m² • PERIMETER: 13.38 m



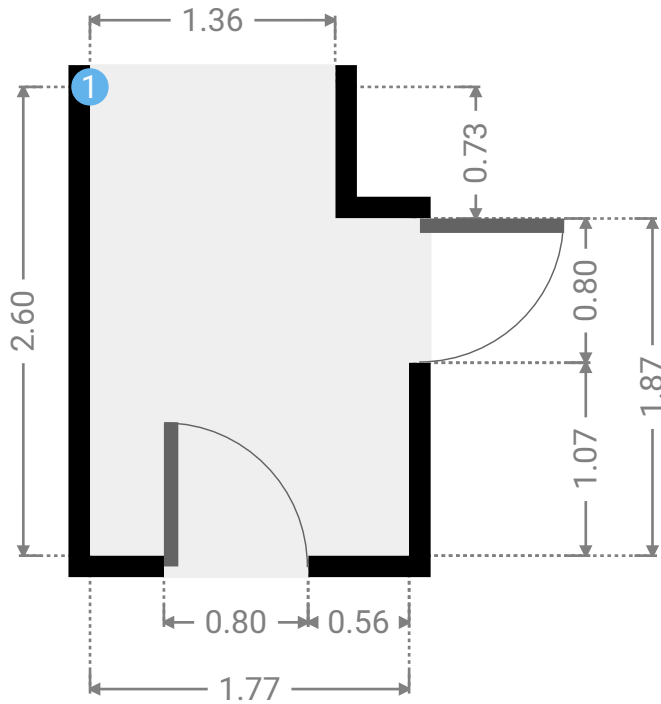
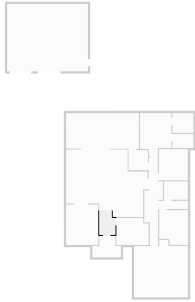
▼ Garage Ground Floor

WIDTH: 6.00 m • LENGTH: 6.39 m
AREA: 35.01 m² • PERIMETER: 24.79 m



▼ Hall Ground Floor

WIDTH: 1.77 m • LENGTH: 2.60 m
AREA: 4.30 m² • PERIMETER: 8.74 m



▼ Hall/Ground Floor

1 OPENING

Height
0.00 m

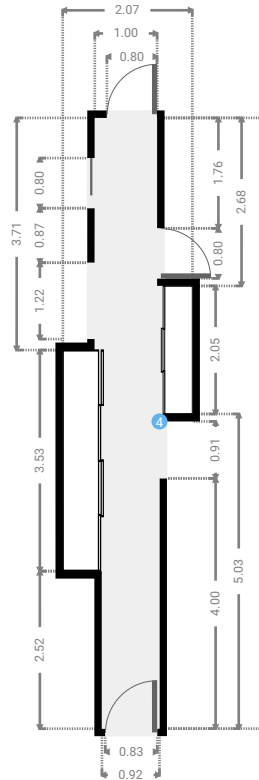
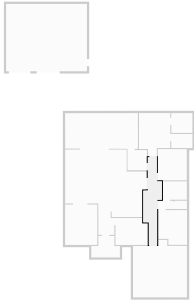


11 Wheeler Court

FLOORS: 1

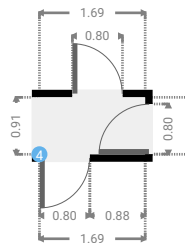
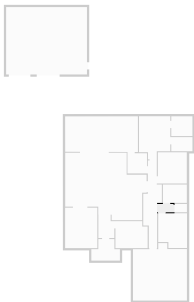
▼ Hall Ground Floor

WIDTH: 2.07 m • LENGTH: 9.76 m
AREA: 12.57 m² • PERIMETER: 23.66 m



▼ Hall Ground Floor

WIDTH: 1.69 m • LENGTH: 0.91 m
AREA: 1.54 m² • PERIMETER: 5.20 m



▼ Hall/Ground Floor

4 OPENING

Height
0.00 m

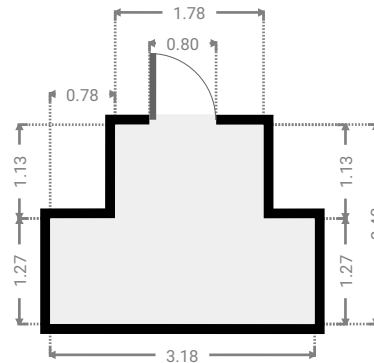
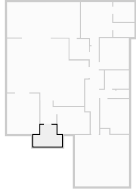


11 Wheeler Court

FLOORS: 1

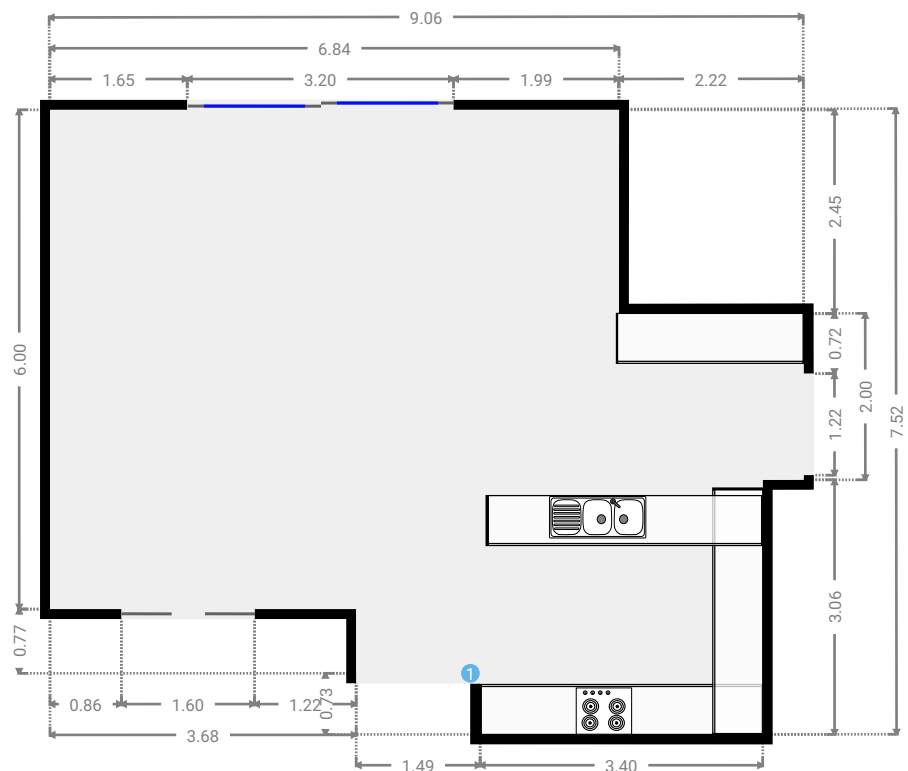
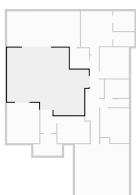
▼ Hallway Ground Floor

WIDTH: 3.18 m • LENGTH: 2.40 m
AREA: 6.04 m² • PERIMETER: 11.15 m

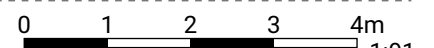


▼ Kitchen Ground Floor

WIDTH: 9.06 m • LENGTH: 7.52 m
AREA: 54.42 m² • PERIMETER: 33.14 m

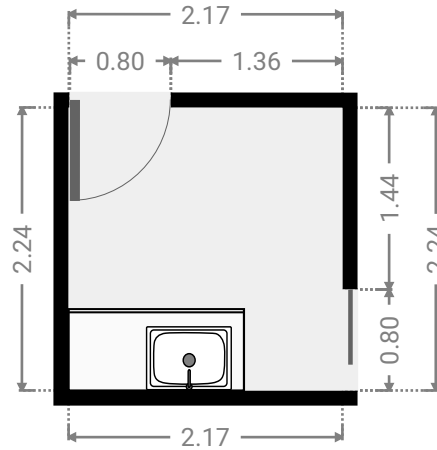
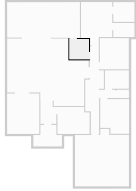


THIS FLOORPLAN IS PROVIDED WITHOUT WARRANTY OF ANY KIND. SENSOPIA DISCLAIMS ANY WARRANTY INCLUDING, WITHOUT LIMITATION, SATISFACTORY QUALITY OR ACCURACY OF DIMENSIONS.



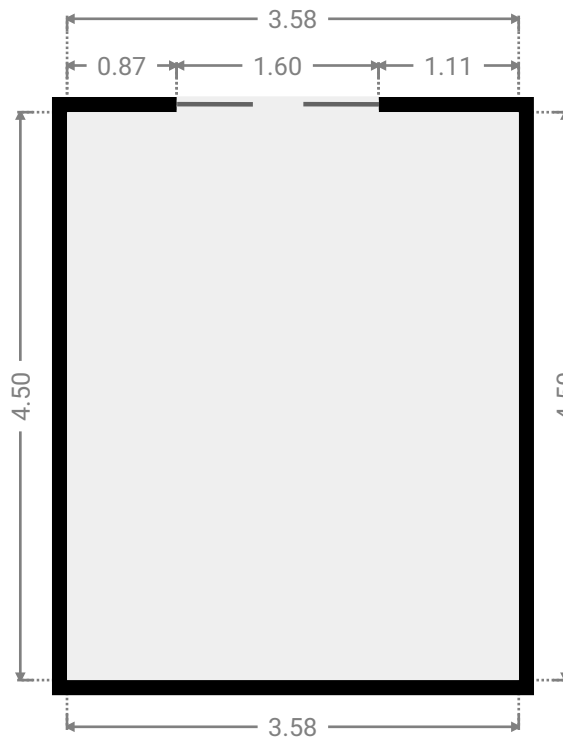
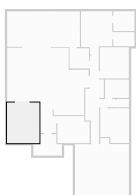
▼ Laundry Room Ground Floor

WIDTH: 2.17 m • LENGTH: 2.24 m
AREA: 4.86 m² • PERIMETER: 8.82 m



▼ Living Room Ground Floor

WIDTH: 3.58 m • LENGTH: 4.50 m
AREA: 16.11 m² • PERIMETER: 16.16 m



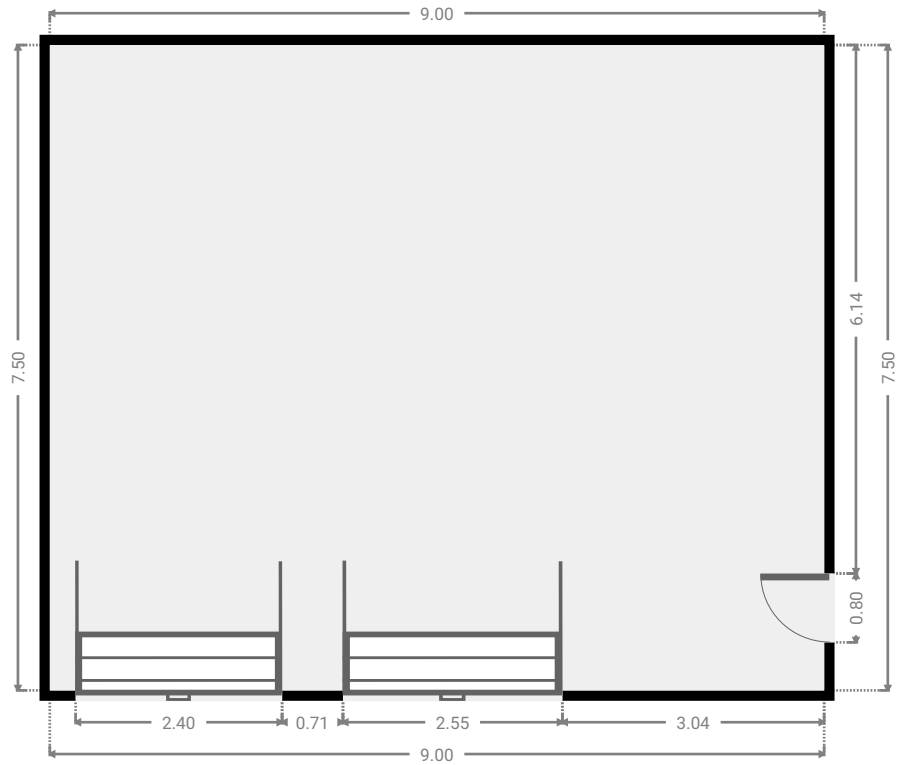
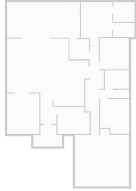
11 Wheeler Court

FLOORS: 1



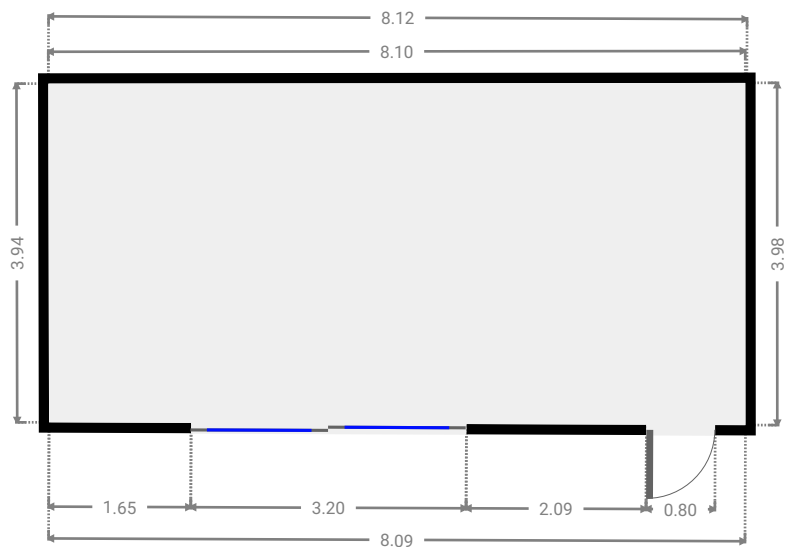
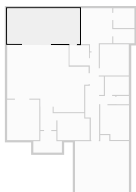
▼ Other Ground Floor

WIDTH: 9.00 m • LENGTH: 7.50 m
AREA: 67.50 m² • PERIMETER: 33.00 m

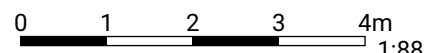


▼ Other Ground Floor

WIDTH: 8.12 m • LENGTH: 3.98 m
AREA: 32.04 m² • PERIMETER: 24.11 m

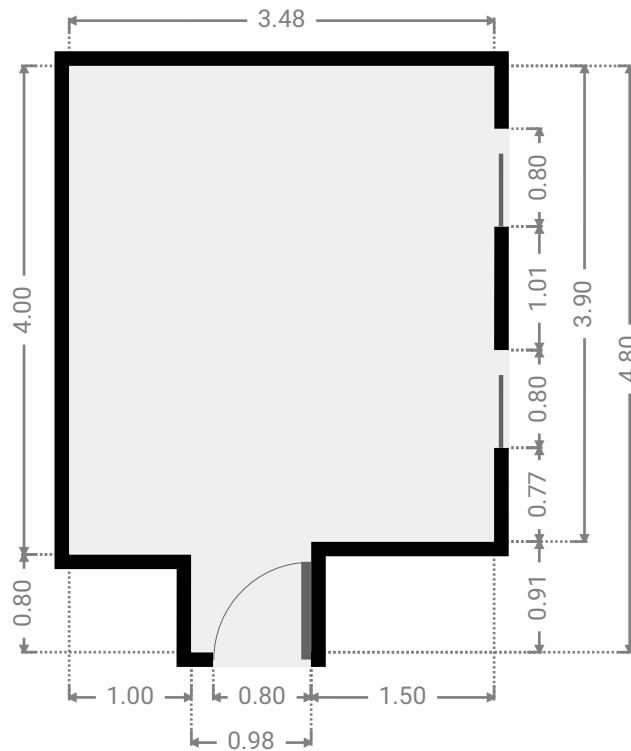
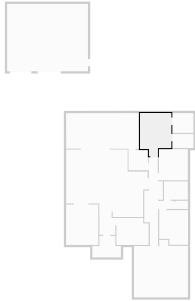


THIS FLOORPLAN IS PROVIDED WITHOUT WARRANTY OF ANY KIND. SENSOPIA DISCLAIMS ANY WARRANTY INCLUDING, WITHOUT LIMITATION, SATISFACTORY QUALITY OR ACCURACY OF DIMENSIONS.



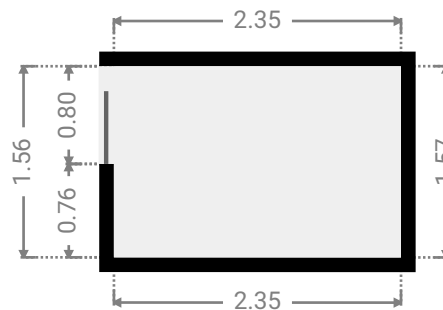
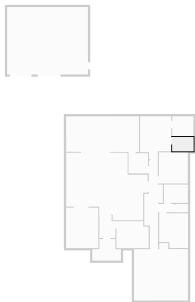
▼ Primary Bedroom Ground Floor

WIDTH: 3.48 m • LENGTH: 4.80 m
AREA: 14.55 m² • PERIMETER: 16.56 m



▼ Closet Ground Floor

WIDTH: 2.35 m • LENGTH: 1.57 m
AREA: 3.68 m² • PERIMETER: 7.83 m



▼ Vestibule Ground Floor

WIDTH: 1.39 m • LENGTH: 0.92 m
AREA: 1.28 m² • PERIMETER: 4.62 m

