

# 11 LillyPilly Avenue

**SUBMITTED BY**  
Ray White Rockhampton Casey  
stockers@cqoz.com

---

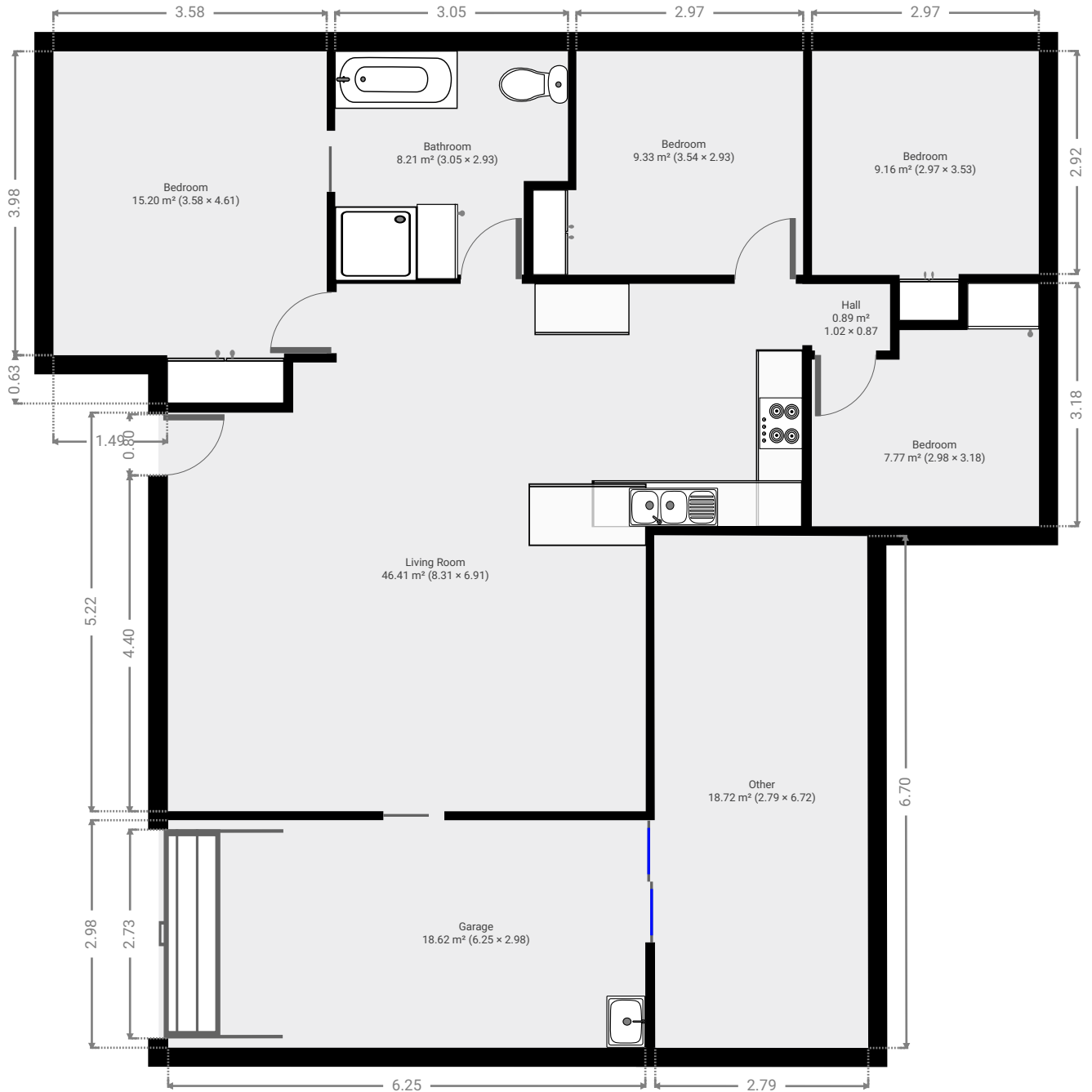
**CREATED ON**  
2022-10-19

---

**Floors**  
1

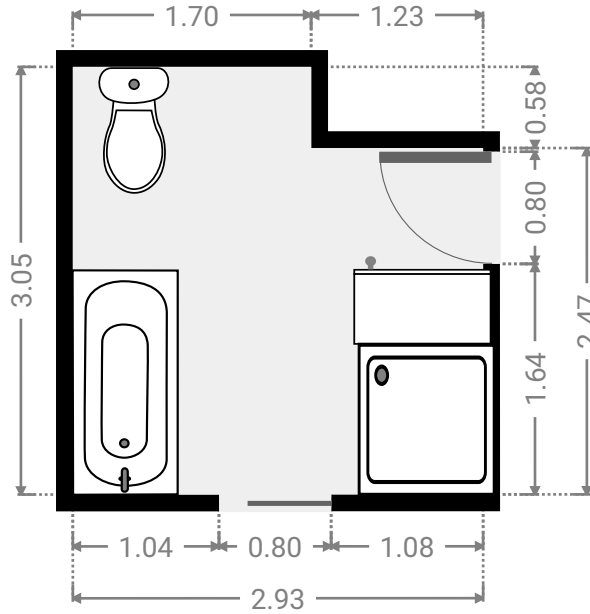
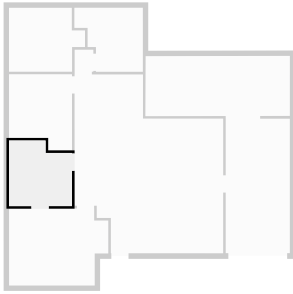
---

▼ Ground Floor



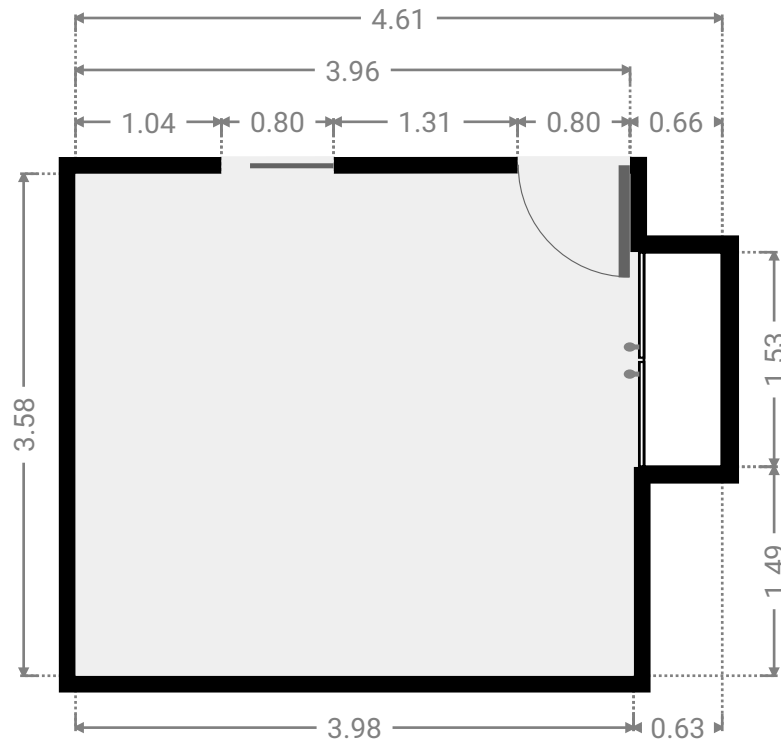
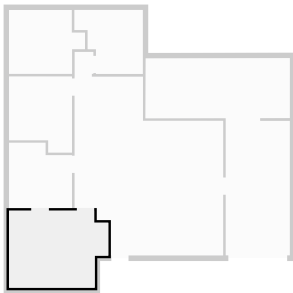
▼ **Bathroom**  
Ground Floor

WIDTH: 2.93 m • LENGTH: 3.05 m  
AREA: 8.21 m<sup>2</sup> • PERIMETER: 11.95 m



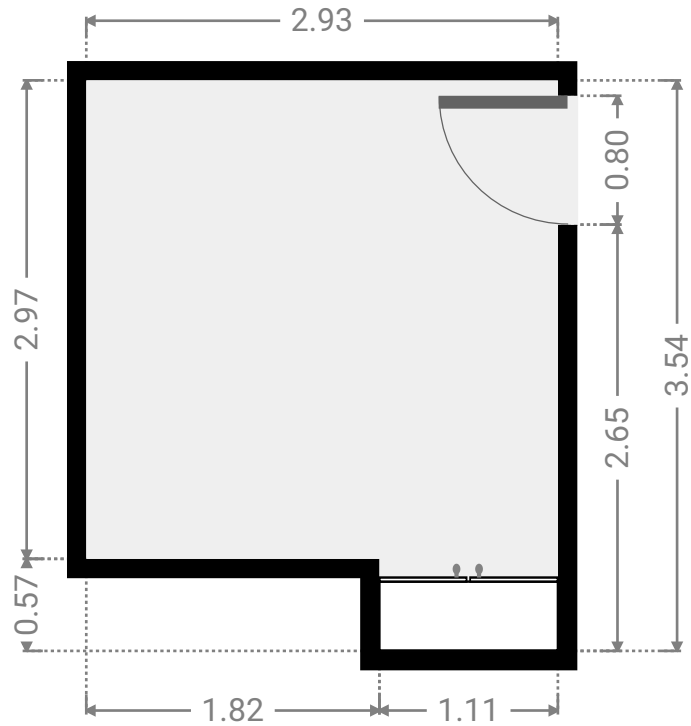
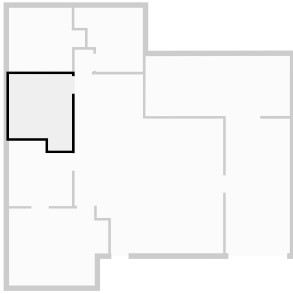
▼ **Bedroom**  
Ground Floor

WIDTH: 4.61 m • LENGTH: 3.58 m  
AREA: 15.20 m<sup>2</sup> • PERIMETER: 16.39 m



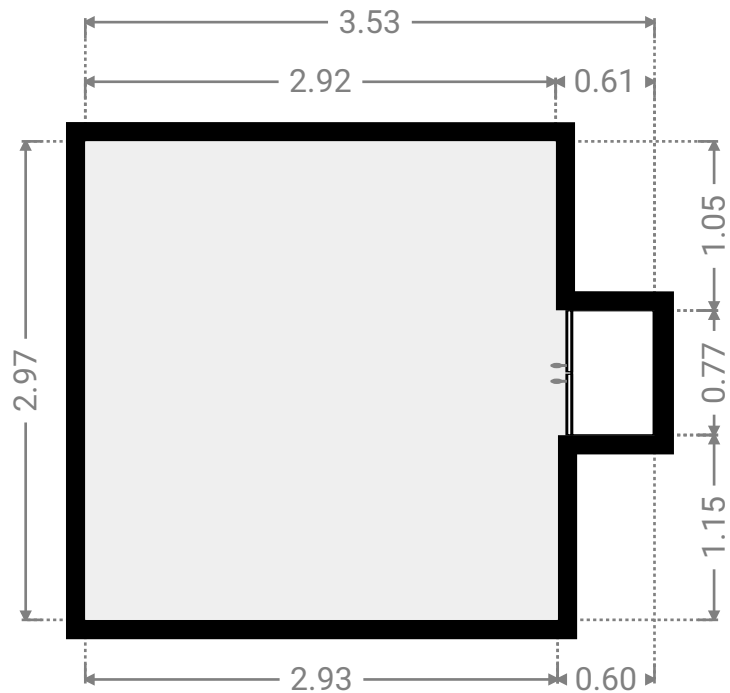
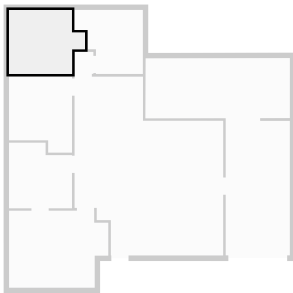
▼ **Bedroom**  
Ground Floor

WIDTH: 2.93 m • LENGTH: 3.54 m  
AREA: 9.33 m<sup>2</sup> • PERIMETER: 12.94 m



▼ **Bedroom**  
Ground Floor

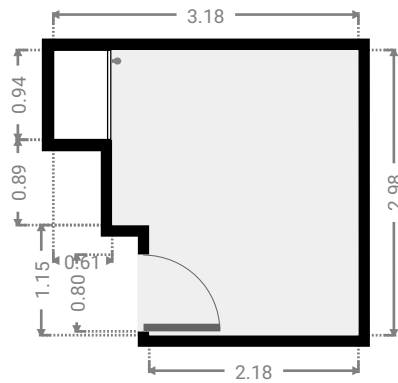
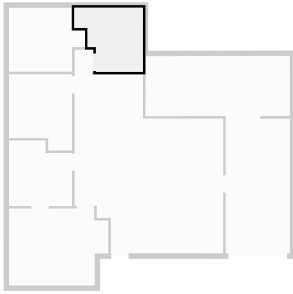
WIDTH: 3.53 m • LENGTH: 2.97 m  
AREA: 9.16 m<sup>2</sup> • PERIMETER: 13.01 m



FLOORS: 1

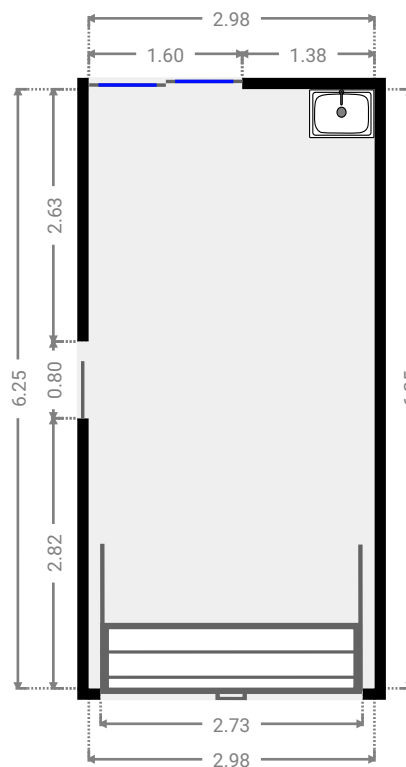
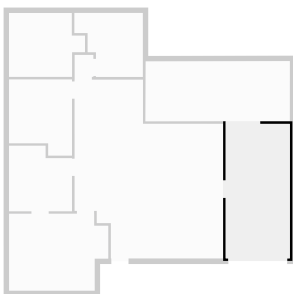
▼ **Bedroom**  
Ground Floor

WIDTH: 3.18 m • LENGTH: 2.98 m  
AREA: 7.77 m<sup>2</sup> • PERIMETER: 12.32 m



▼ **Garage**  
Ground Floor

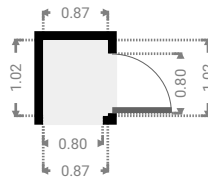
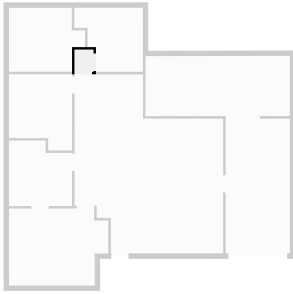
WIDTH: 2.98 m • LENGTH: 6.25 m  
AREA: 18.62 m<sup>2</sup> • PERIMETER: 18.46 m



FLOORS: 1

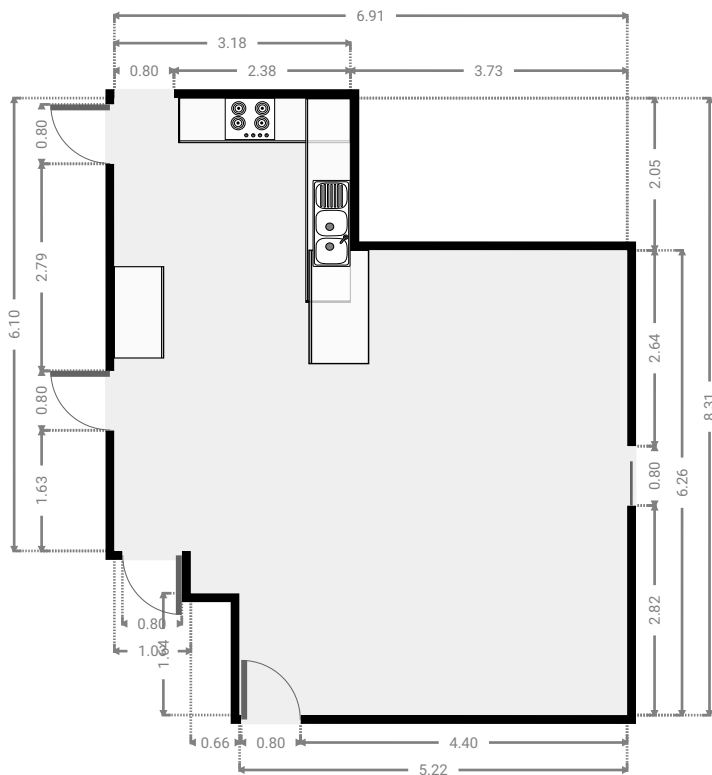
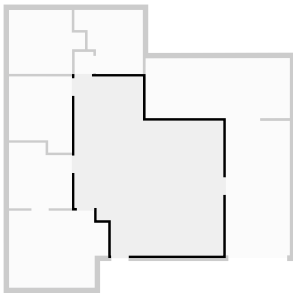
▼ **Hall**  
Ground Floor

WIDTH: 0.87 m • LENGTH: 1.02 m  
AREA: 0.89 m<sup>2</sup> • PERIMETER: 3.78 m



▼ **Living Room**  
Ground Floor

WIDTH: 6.91 m • LENGTH: 8.31 m  
AREA: 46.41 m<sup>2</sup> • PERIMETER: 30.44 m



▼ Other  
Ground Floor

WIDTH: 6.72 m • LENGTH: 2.79 m  
AREA: 18.72 m<sup>2</sup> • PERIMETER: 19.00 m

