

11 Jones Street

SUBMITTED BY

Ray White Rockhampton
marketing@raywhiterockhampton.com

CREATED ON

2022-06-28

[View Photo Gallery](#)

Floors

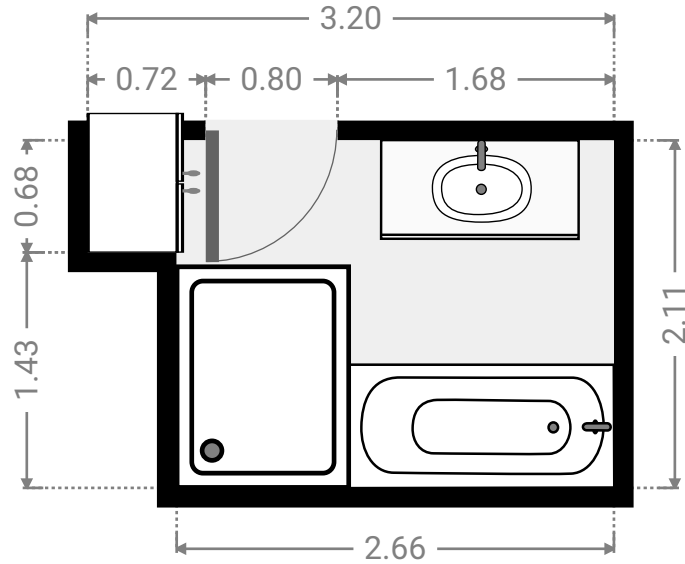
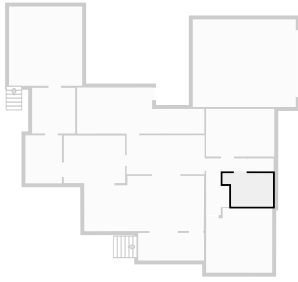
1

▼ Ground Floor



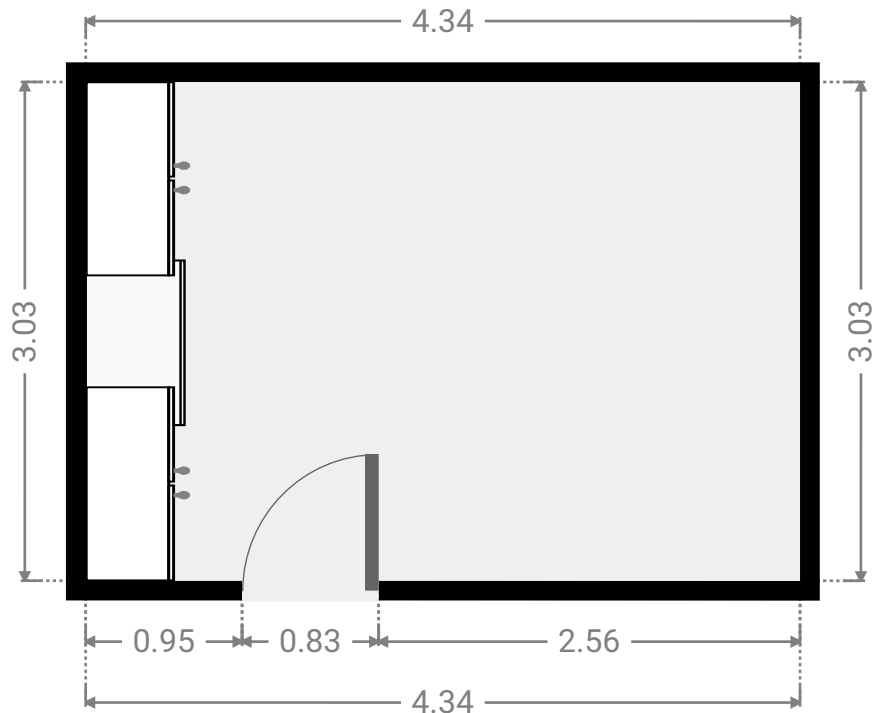
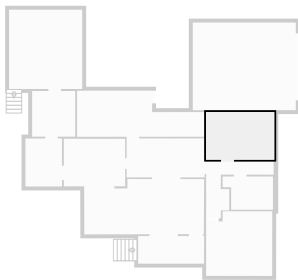
▼ **Bathroom**
Ground Floor

WIDTH: 3.20 m • LENGTH: 2.11 m
AREA: 5.98 m² • PERIMETER: 10.62 m



▼ **Bedroom**
Ground Floor

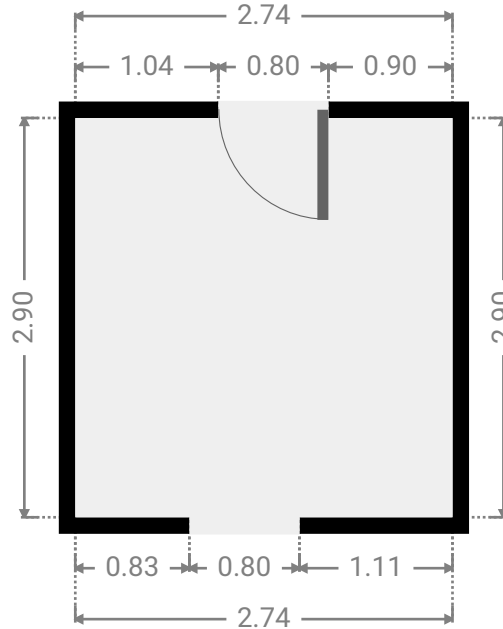
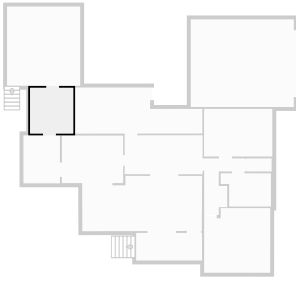
WIDTH: 4.34 m • LENGTH: 3.03 m
AREA: 13.15 m² • PERIMETER: 14.74 m



FLOORS: 1

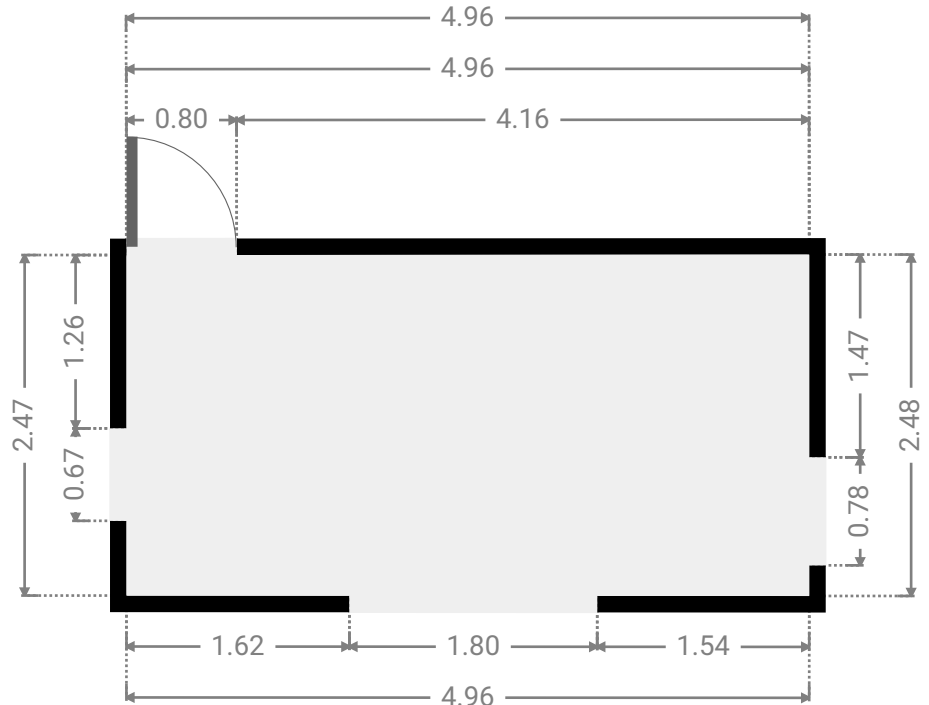
▼ Bedroom
Ground Floor

WIDTH: 2.74 m • LENGTH: 2.90 m
AREA: 7.95 m² • PERIMETER: 11.28 m



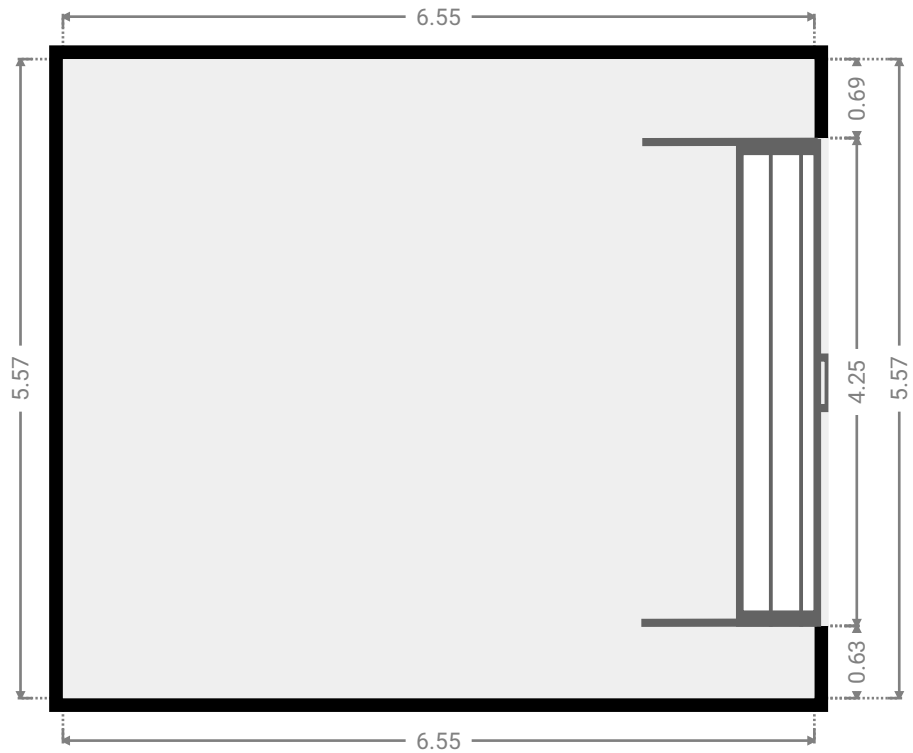
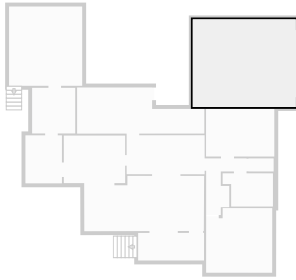
▼ Dining Room
Ground Floor

WIDTH: 4.96 m • LENGTH: 2.48 m
AREA: 12.28 m² • PERIMETER: 14.87 m



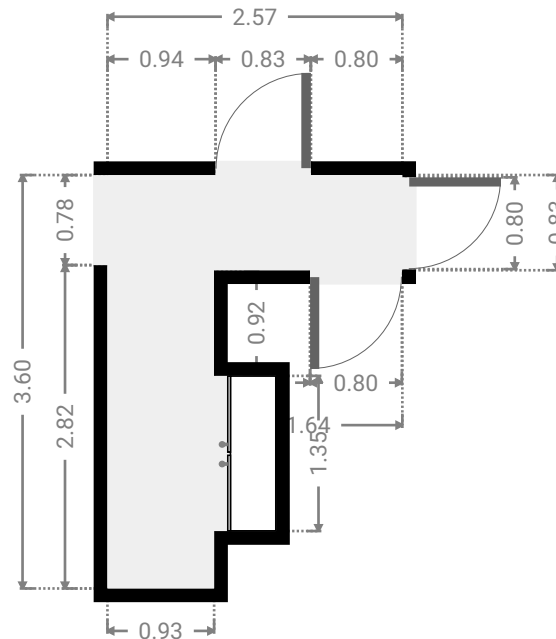
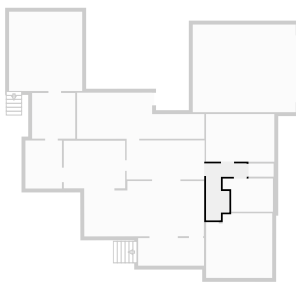
▼ **Garage**
Ground Floor

WIDTH: 6.55 m • LENGTH: 5.57 m
AREA: 36.48 m² • PERIMETER: 24.24 m



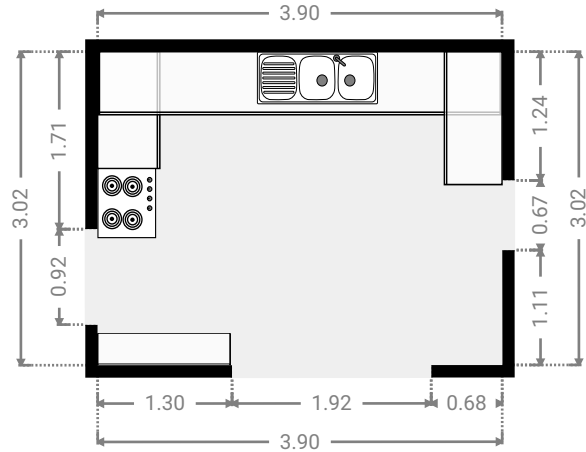
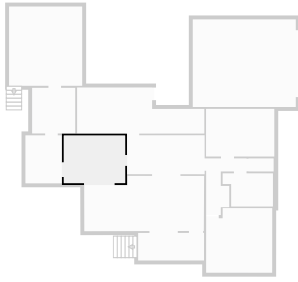
▼ **Hall**
Ground Floor

WIDTH: 2.57 m • LENGTH: 3.60 m
AREA: 5.44 m² • PERIMETER: 13.43 m



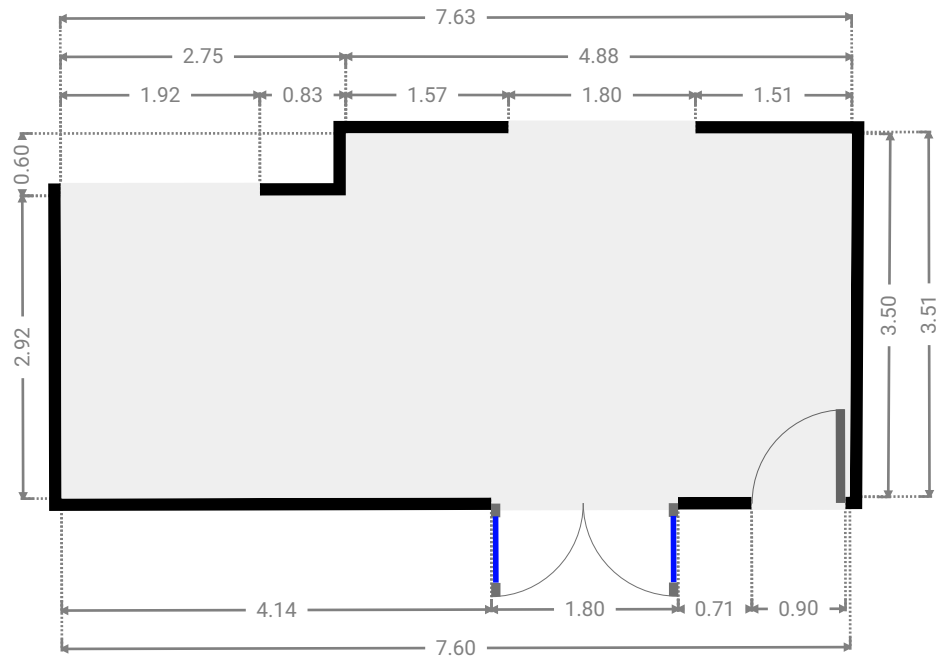
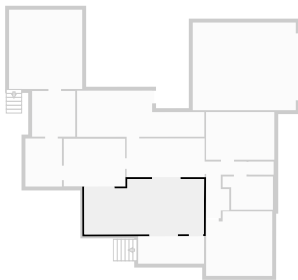
▼ Kitchen
Ground Floor

WIDTH: 3.90 m • LENGTH: 3.02 m
AREA: 11.78 m² • PERIMETER: 13.84 m



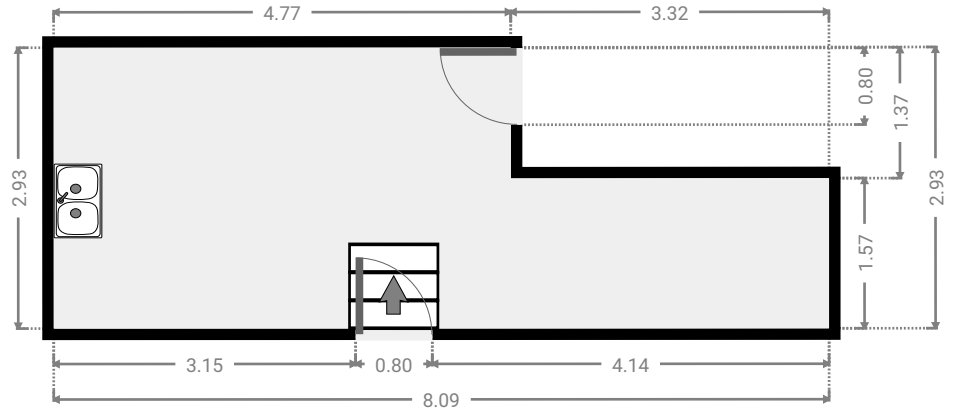
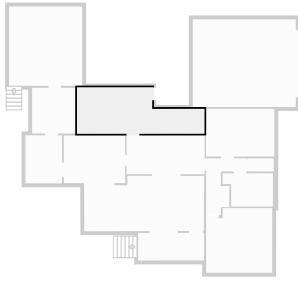
▼ Living Room
Ground Floor

WIDTH: 7.63 m • LENGTH: 3.51 m
AREA: 25.08 m² • PERIMETER: 22.25 m



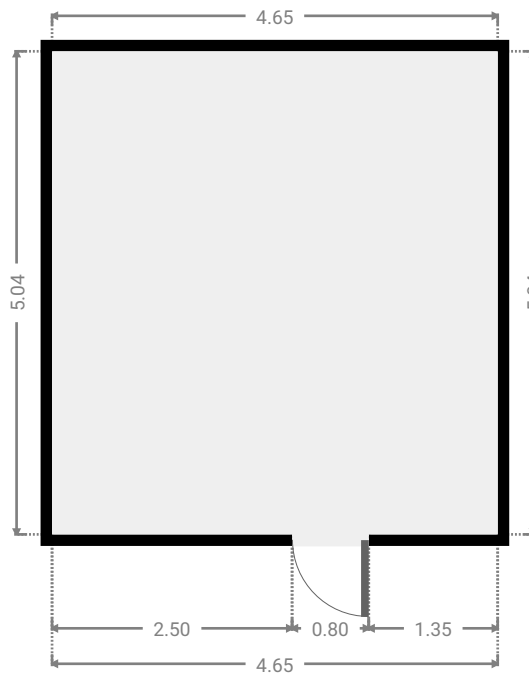
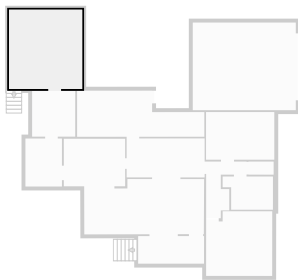
▼ Other
Ground Floor

WIDTH: 8.09 m • LENGTH: 2.93 m
AREA: 19.18 m² • PERIMETER: 22.04 m



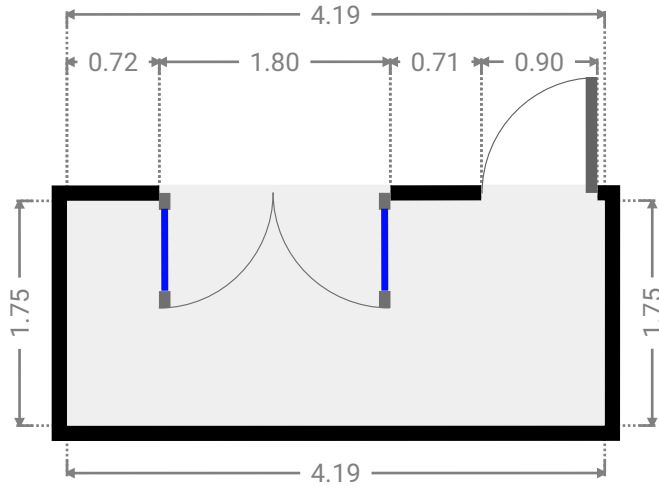
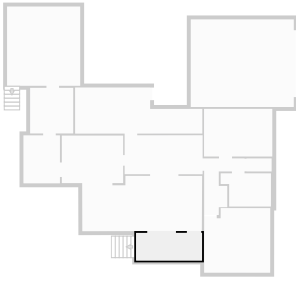
▼ Other
Ground Floor

WIDTH: 4.65 m • LENGTH: 5.04 m
AREA: 23.44 m² • PERIMETER: 19.38 m



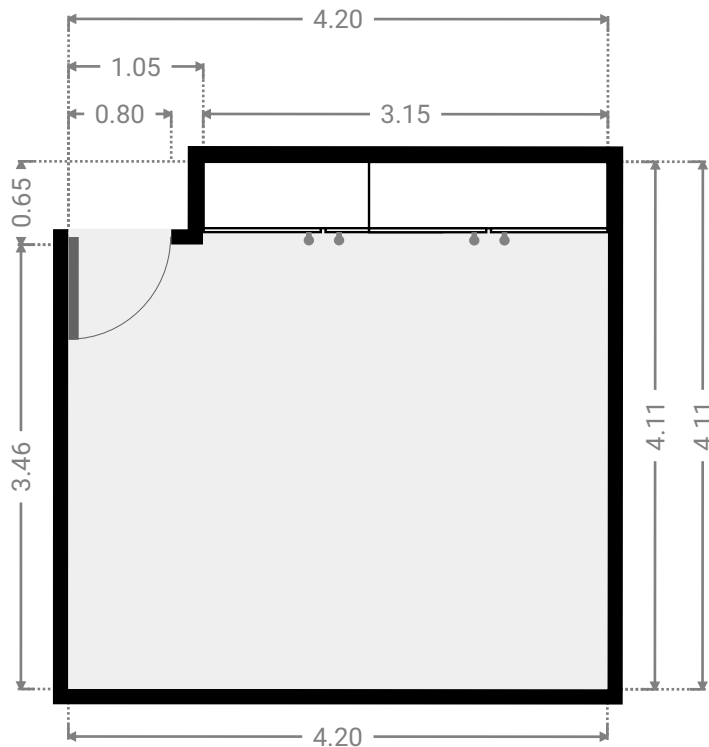
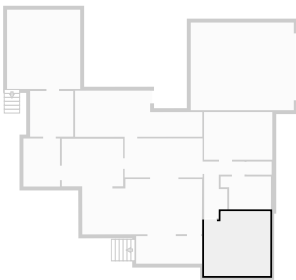
▼ Other
Ground Floor

WIDTH: 4.19 m • LENGTH: 1.75 m
AREA: 7.34 m² • PERIMETER: 11.88 m



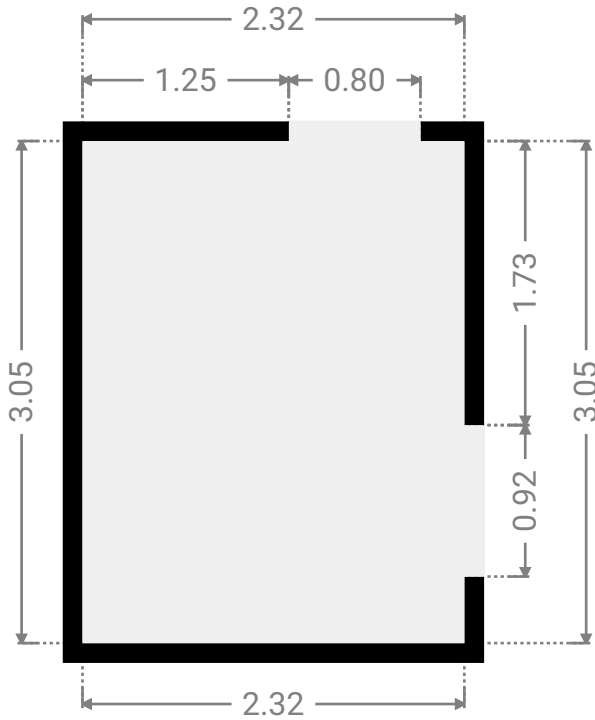
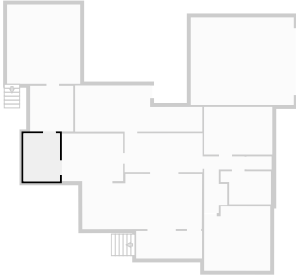
▼ Primary Bedroom
Ground Floor

WIDTH: 4.20 m • LENGTH: 4.11 m
AREA: 16.59 m² • PERIMETER: 16.62 m



▼ **Study**
Ground Floor

WIDTH: 2.32 m • LENGTH: 3.05 m
AREA: 7.08 m² • PERIMETER: 10.74 m



▼ **Toilet**
Ground Floor

WIDTH: 1.60 m • LENGTH: 0.83 m
AREA: 1.33 m² • PERIMETER: 4.86 m

