

11 Jamie Crescent

Created on
2021-08-26

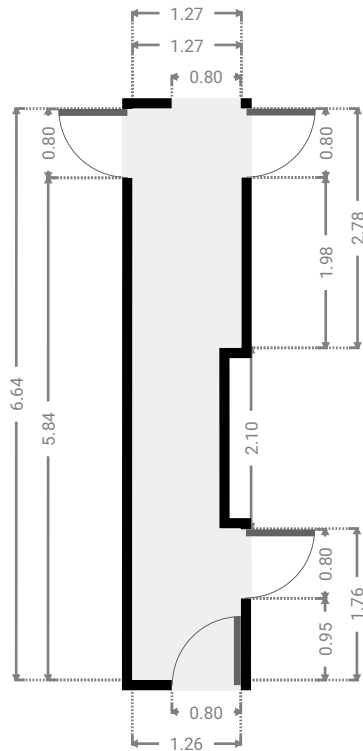
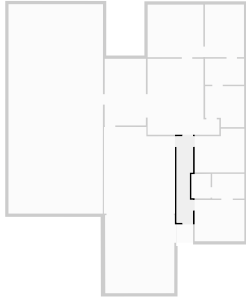
Floors
1

▼ Ground Floor



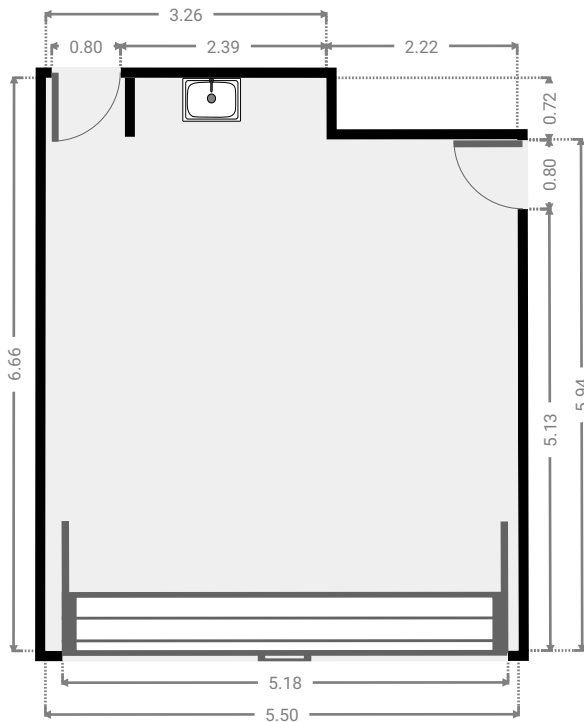
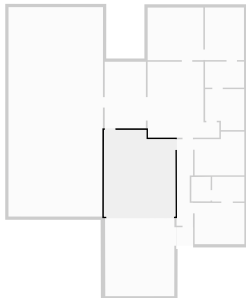
▼ **Hall**
Ground Floor

WIDTH: 1.27 m • LENGTH: 6.64 m
AREA: 7.86 m² • PERIMETER: 16.31 m



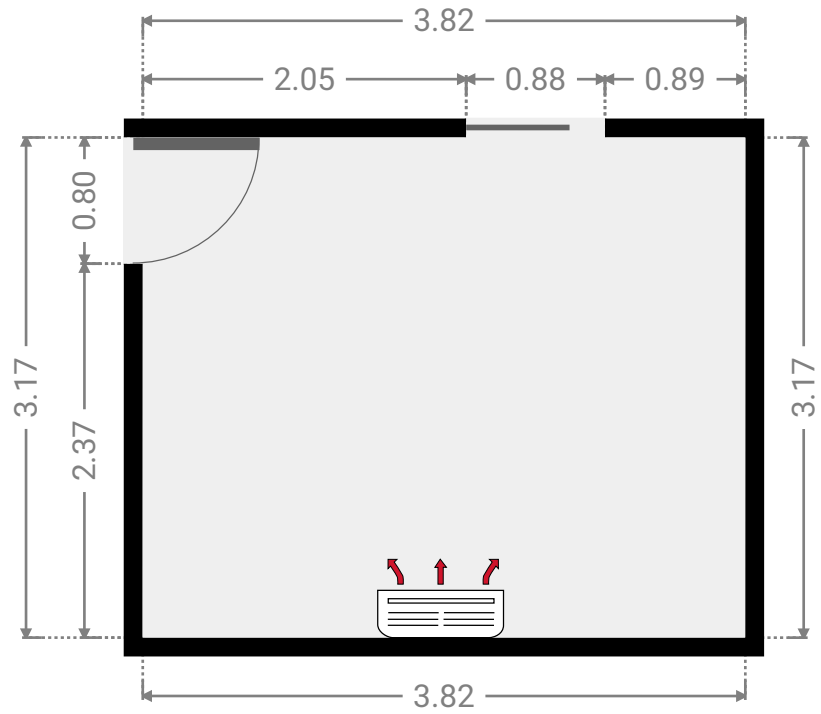
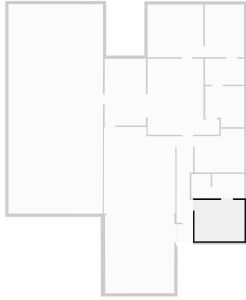
▼ **Living Room**
Ground Floor

WIDTH: 5.50 m • LENGTH: 6.66 m
AREA: 34.95 m² • PERIMETER: 24.30 m



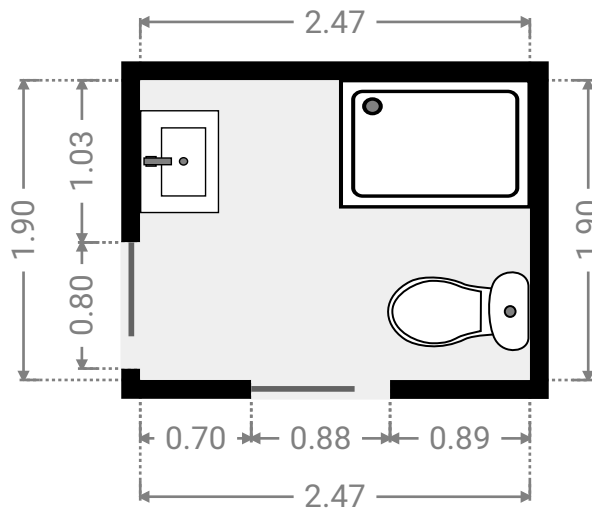
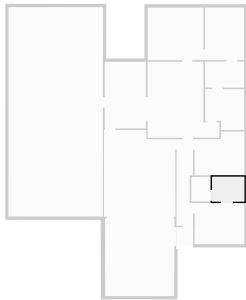
▼ Master Bedroom Ground Floor

WIDTH: 3.82 m • LENGTH: 3.17 m
AREA: 12.11 m² • PERIMETER: 13.98 m



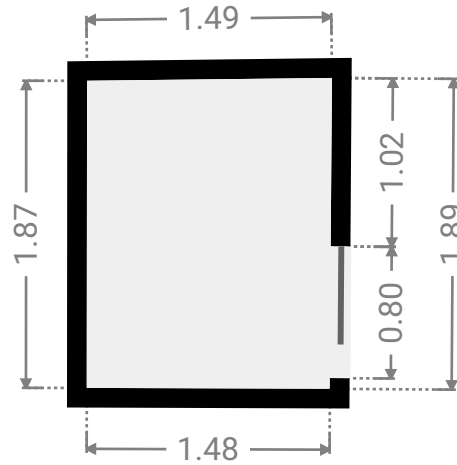
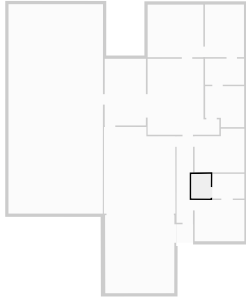
▼ Bathroom Ground Floor

WIDTH: 2.47 m • LENGTH: 1.90 m
AREA: 4.69 m² • PERIMETER: 8.74 m



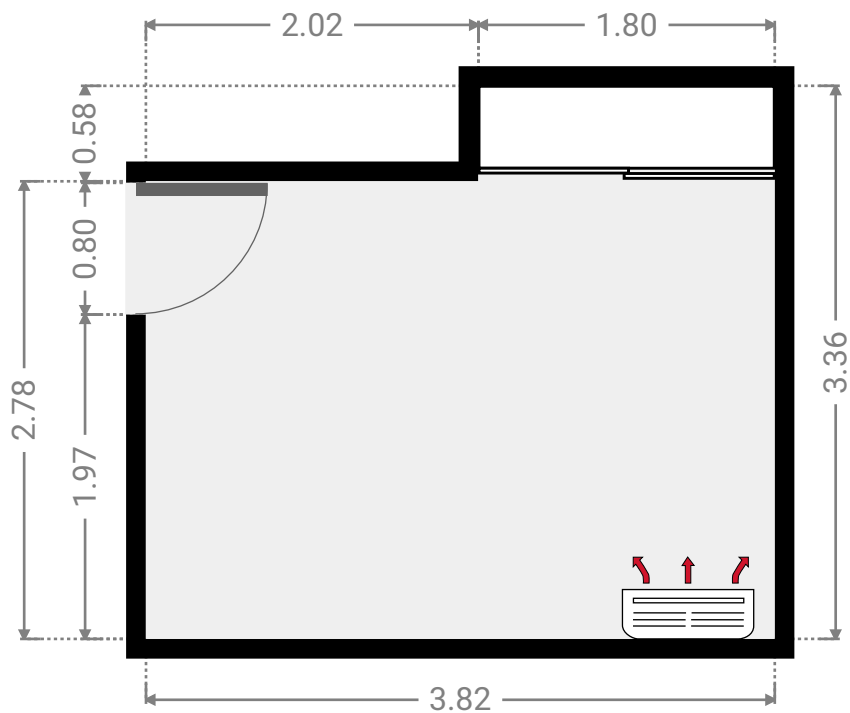
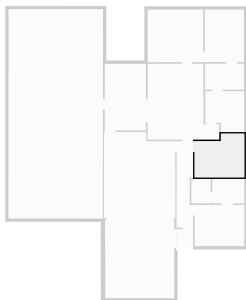
▼ Closet Ground Floor

WIDTH: 1.49 m • LENGTH: 1.89 m
AREA: 2.78 m² • PERIMETER: 6.72 m



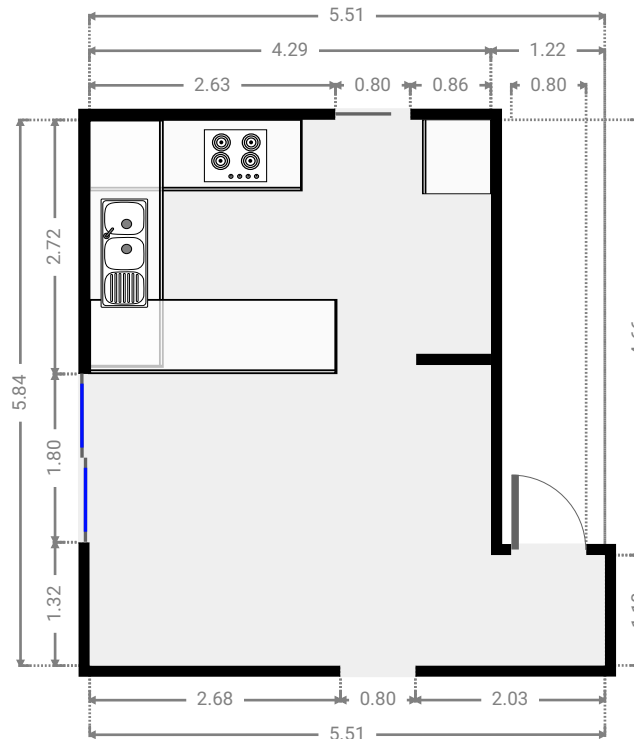
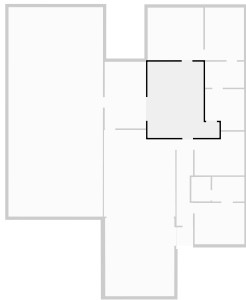
▼ Bedroom Ground Floor

WIDTH: 3.82 m • LENGTH: 3.36 m
AREA: 11.66 m² • PERIMETER: 14.36 m



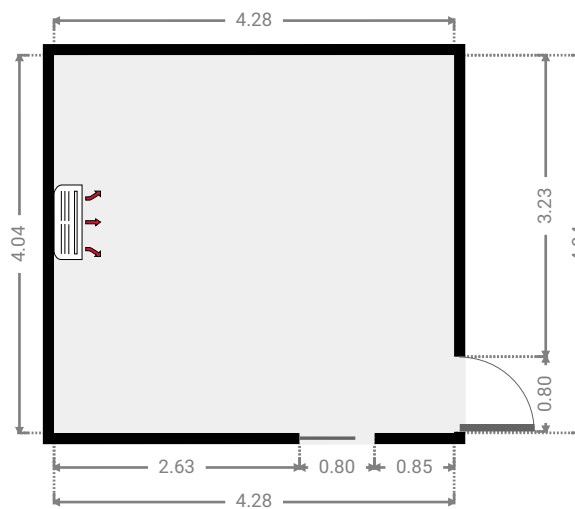
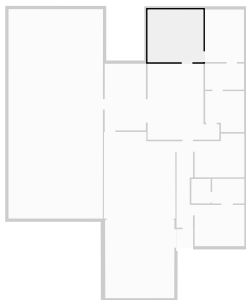
▼ Kitchen Ground Floor

WIDTH: 5.51 m • LENGTH: 5.84 m
AREA: 26.50 m² • PERIMETER: 22.70 m



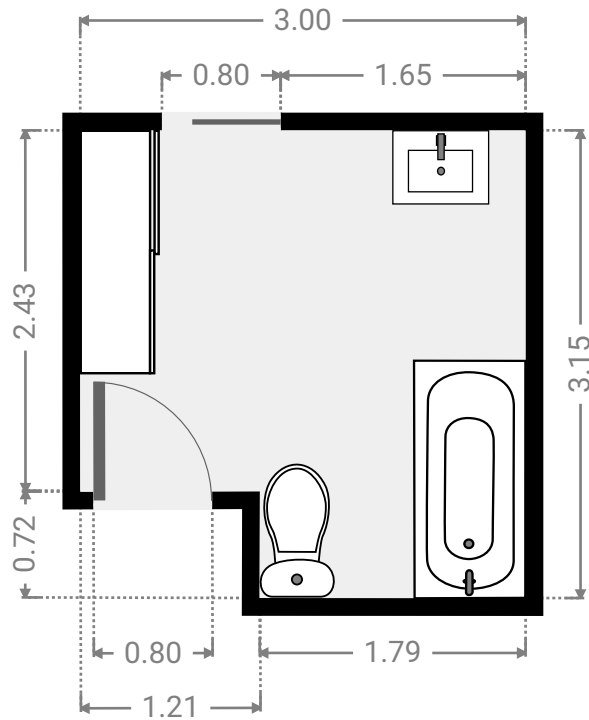
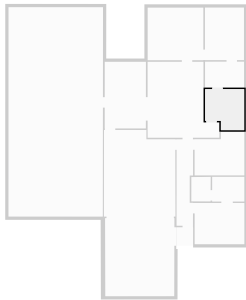
▼ Living Room Ground Floor

WIDTH: 4.28 m • LENGTH: 4.04 m
AREA: 17.29 m² • PERIMETER: 16.64 m



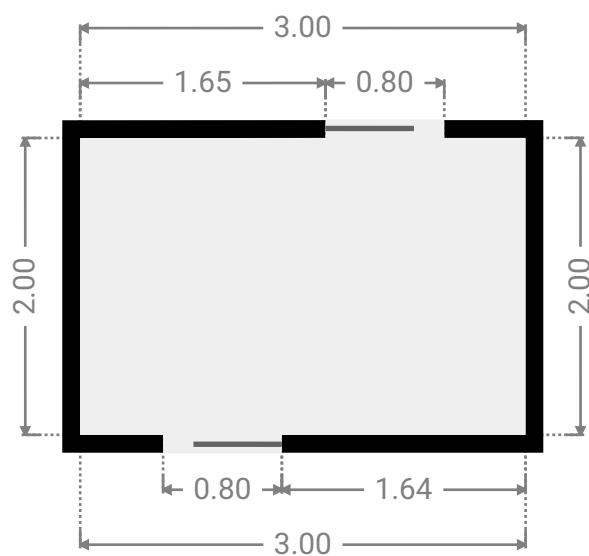
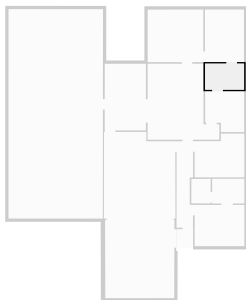
▼ Bathroom Ground Floor

WIDTH: 3.00 m • LENGTH: 3.15 m
AREA: 8.58 m² • PERIMETER: 12.30 m



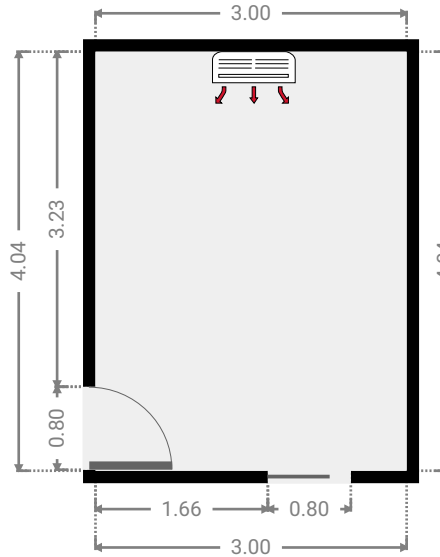
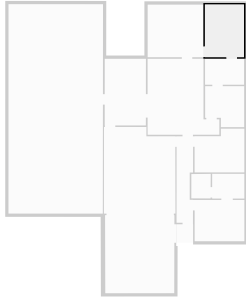
▼ Closet Ground Floor

WIDTH: 3.00 m • LENGTH: 2.00 m
AREA: 6.00 m² • PERIMETER: 10.00 m



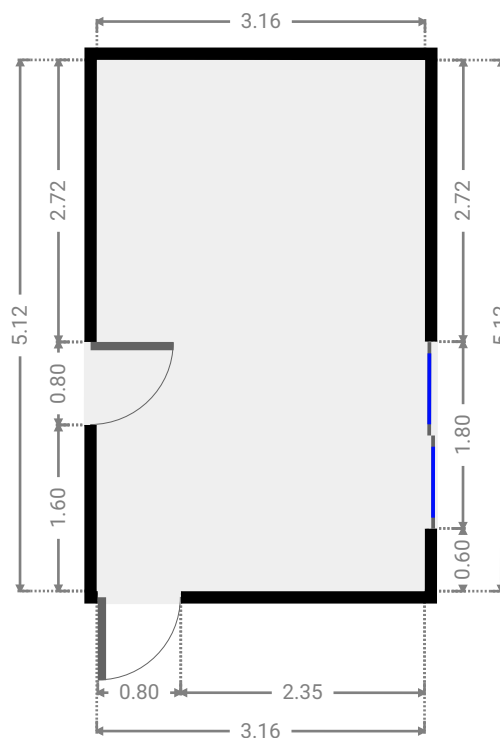
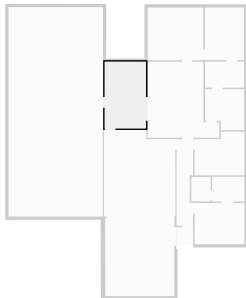
▼ Master Bedroom Ground Floor

WIDTH: 3.00 m • LENGTH: 4.04 m
AREA: 12.12 m² • PERIMETER: 14.08 m



▼ Other Ground Floor

WIDTH: 3.16 m • LENGTH: 5.12 m
AREA: 16.19 m² • PERIMETER: 16.56 m

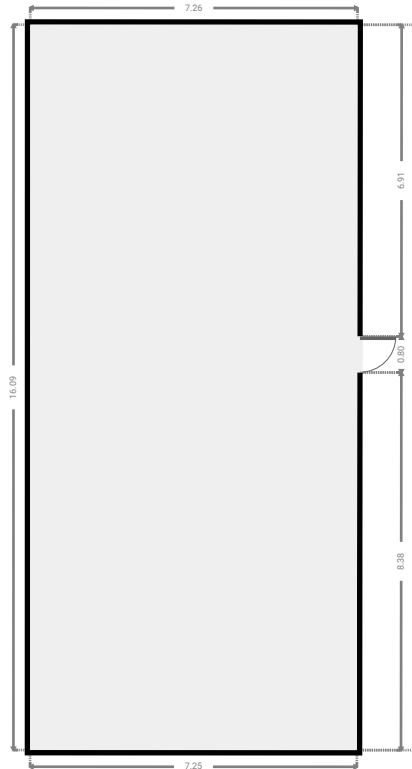
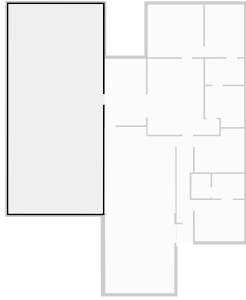


11 Jamie Crescent

FLOORS: 1

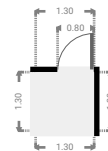
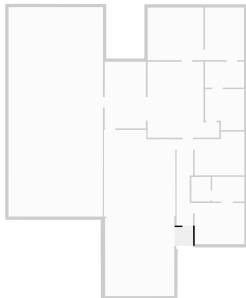
▼ Other Ground Floor

WIDTH: 7.26 m • LENGTH: 16.09 m
AREA: 116.78 m² • PERIMETER: 46.70 m



▼ Hall Ground Floor

WIDTH: 1.30 m • LENGTH: 1.30 m
AREA: 1.69 m² • PERIMETER: 5.19 m



11 Jamie Crescent

FLOORS: 1

▼ Carport Ground Floor

WIDTH: 5.33 m • LENGTH: 6.00 m
AREA: 31.89 m² • PERIMETER: 22.63 m

