

11 Francis Street

SUBMITTED BY

Ray White Rockhampton Casey
stockers@cqoz.com

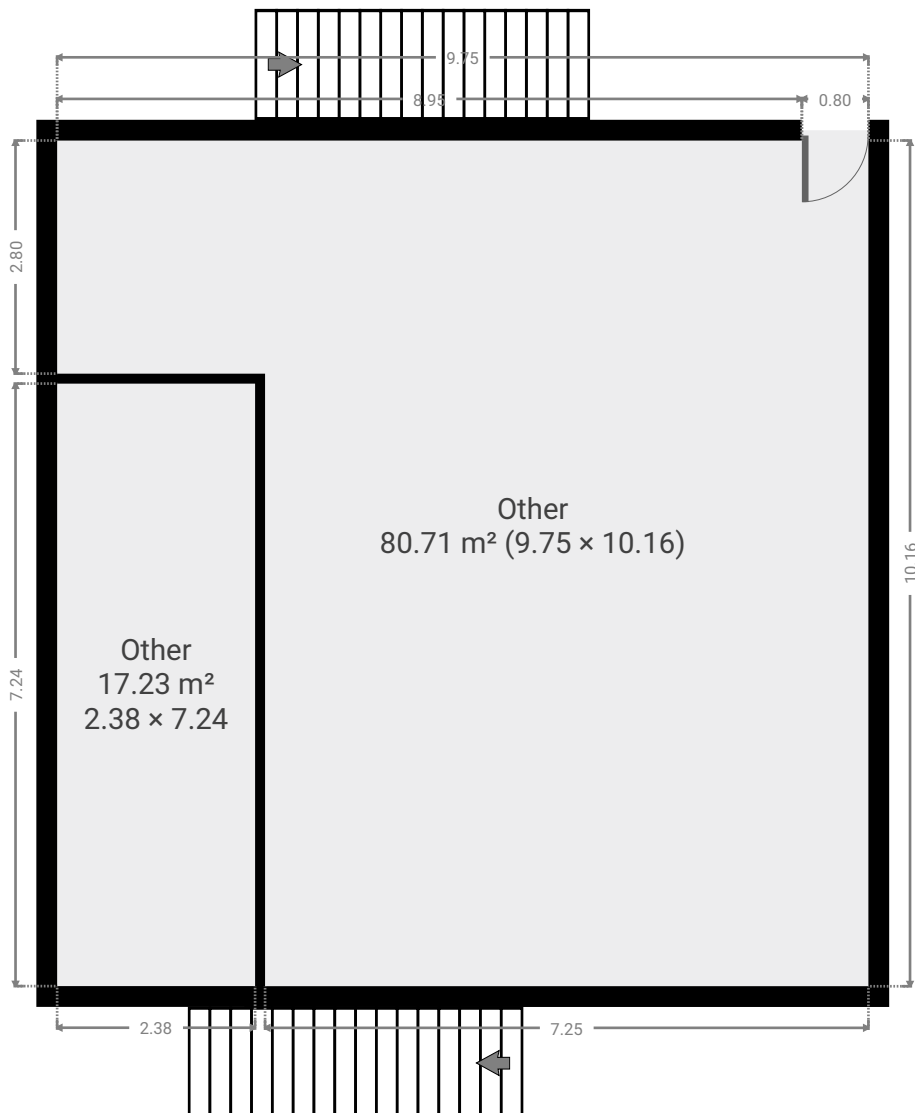
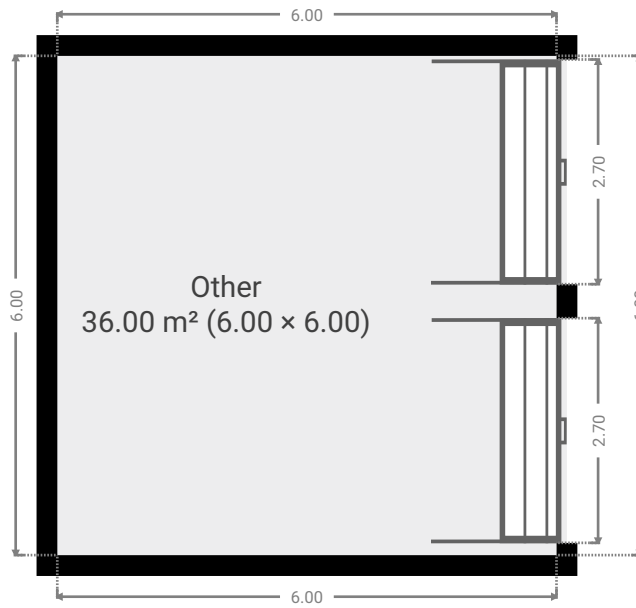
CREATED ON

2022-04-06

Floors

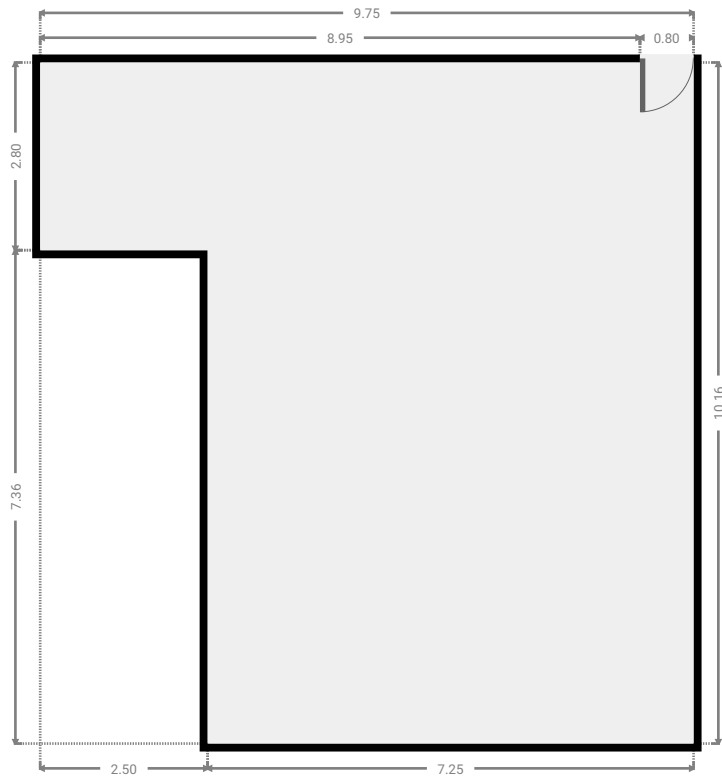
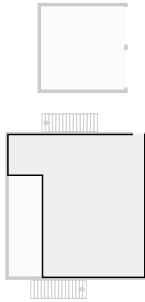
2

▼ Ground Floor



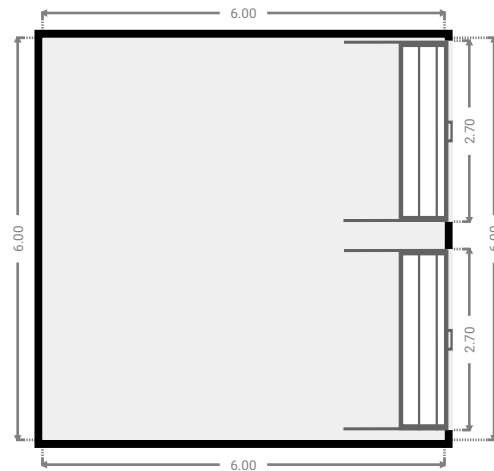
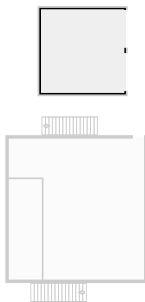
▼ Other
Ground Floor

WIDTH: 9.75 m • LENGTH: 10.16 m
AREA: 80.71 m² • PERIMETER: 39.83 m



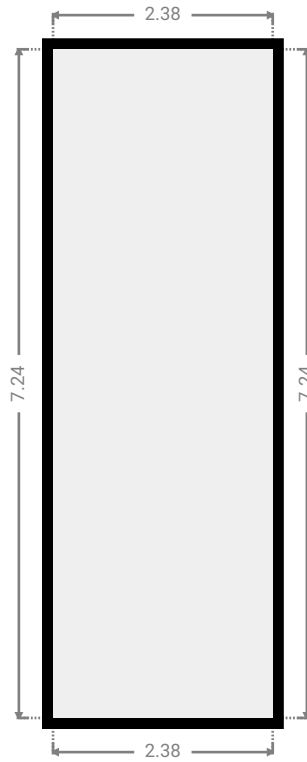
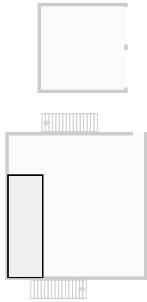
▼ Other
Ground Floor

WIDTH: 6.00 m • LENGTH: 6.00 m
AREA: 36.00 m² • PERIMETER: 24.00 m

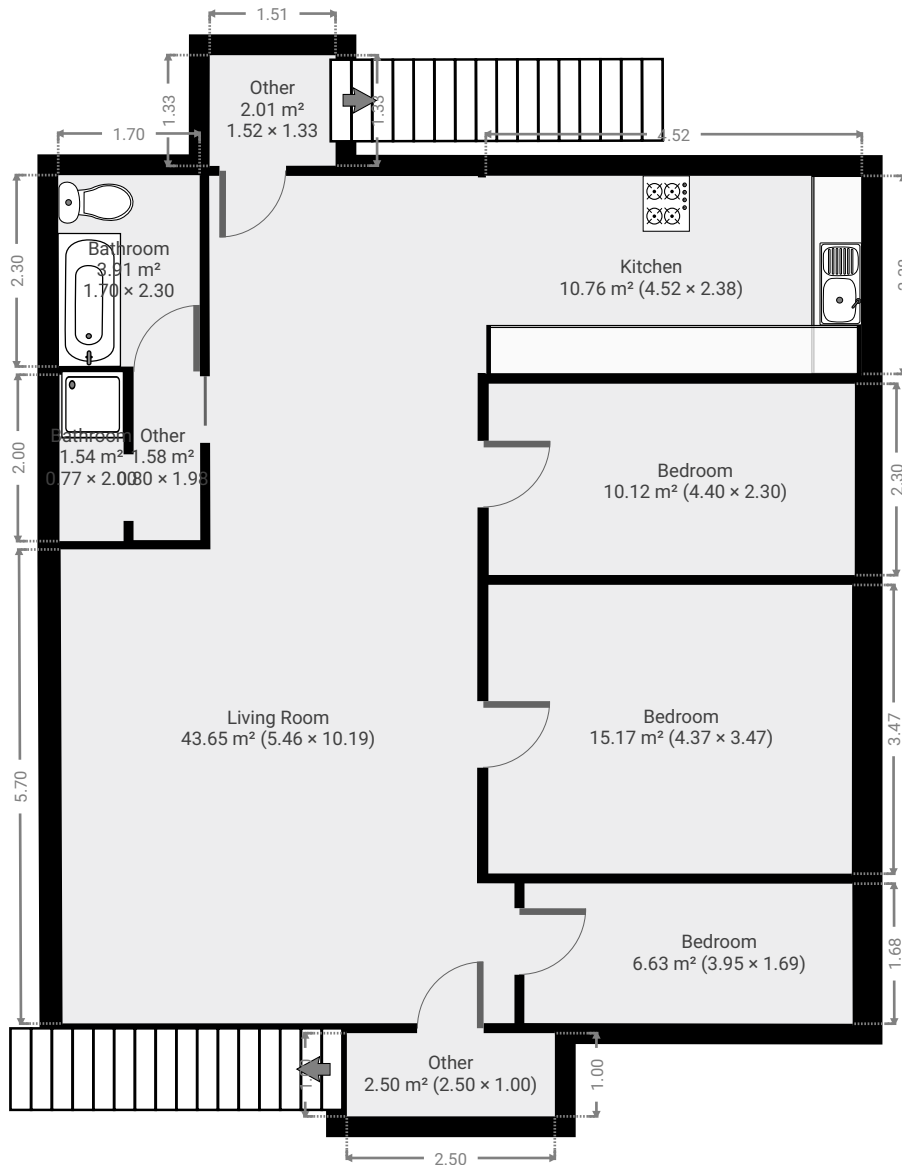


▼ Other
Ground Floor

WIDTH: 2.38 m • LENGTH: 7.24 m
AREA: 17.23 m² • PERIMETER: 19.24 m

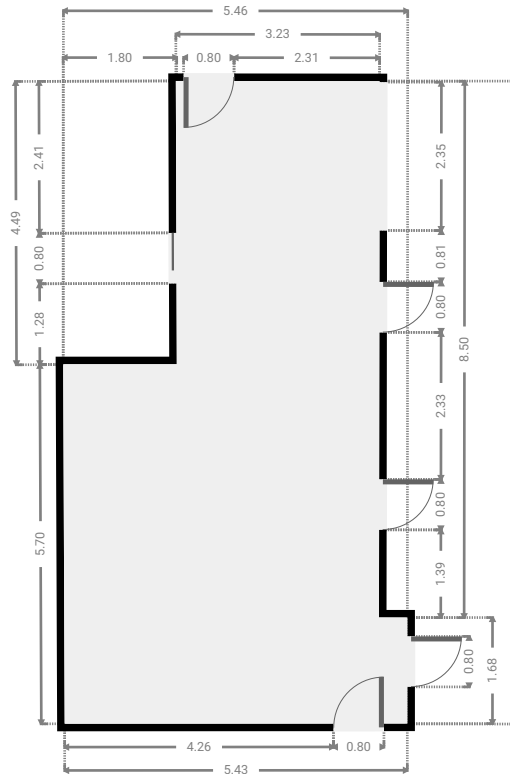
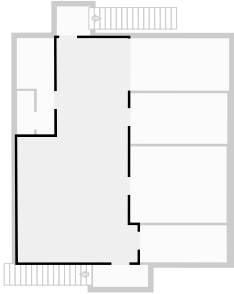


▼ 1st Floor



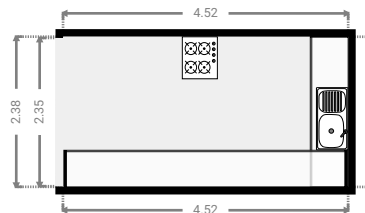
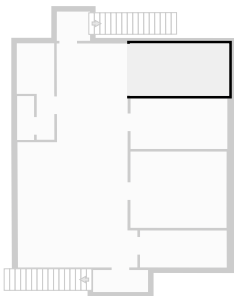
▼ **Living Room**
1st Floor

WIDTH: 5.46 m • LENGTH: 10.19 m
AREA: 43.65 m² • PERIMETER: 31.28 m



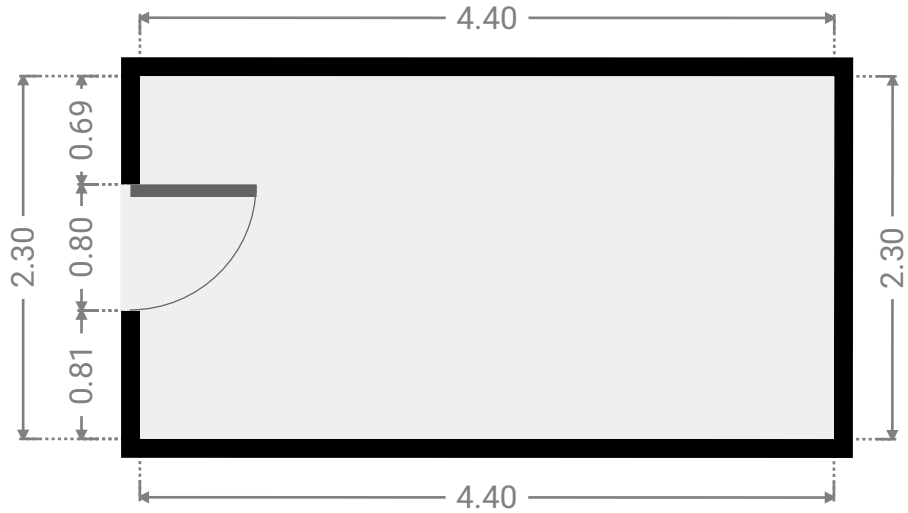
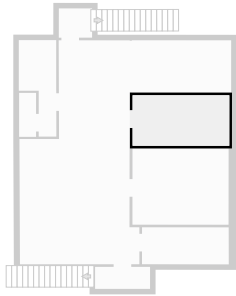
▼ **Kitchen**
1st Floor

WIDTH: 4.52 m • LENGTH: 2.38 m
AREA: 10.76 m² • PERIMETER: 13.80 m



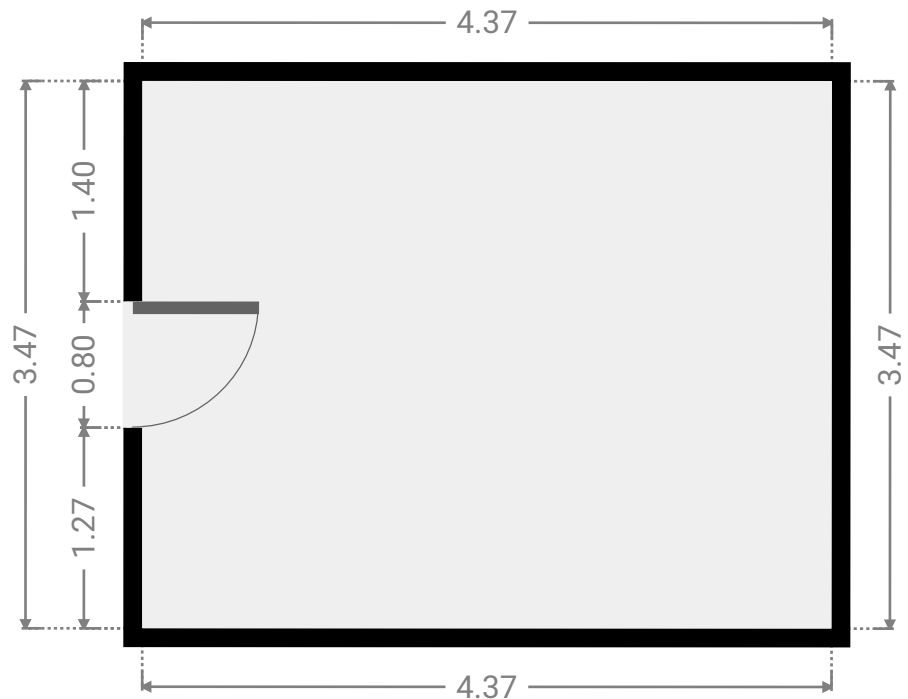
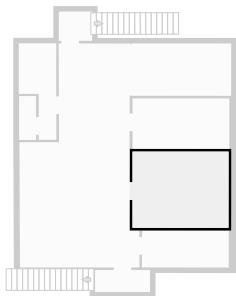
▼ **Bedroom**
1st Floor

WIDTH: 4.40 m • LENGTH: 2.30 m
AREA: 10.12 m² • PERIMETER: 13.40 m



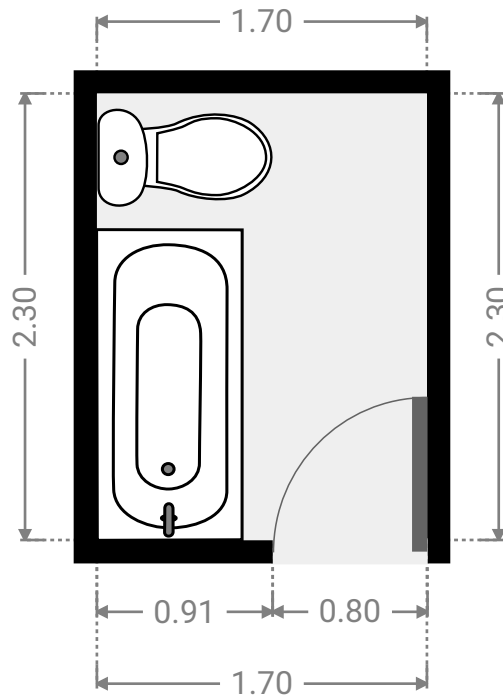
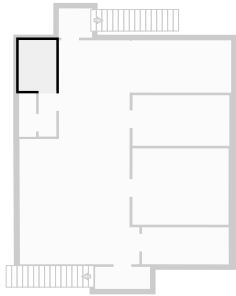
▼ **Bedroom**
1st Floor

WIDTH: 4.37 m • LENGTH: 3.47 m
AREA: 15.17 m² • PERIMETER: 15.68 m



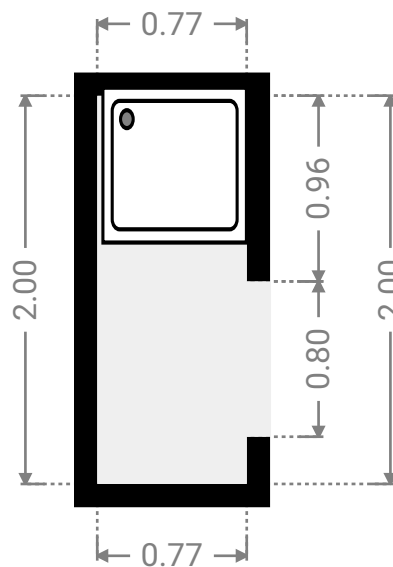
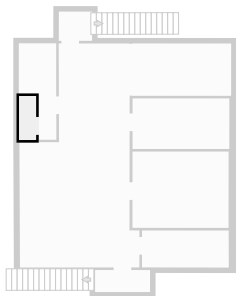
▼ Bathroom
1st Floor

WIDTH: 1.70 m • LENGTH: 2.30 m
AREA: 3.91 m² • PERIMETER: 8.00 m



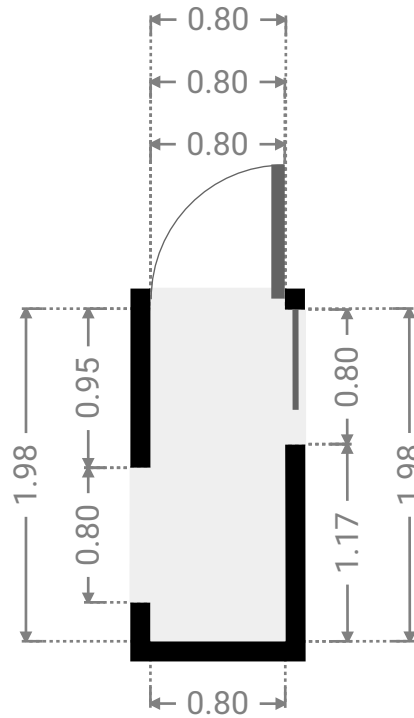
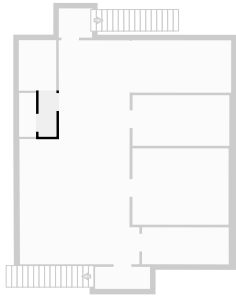
▼ Bathroom
1st Floor

WIDTH: 0.77 m • LENGTH: 2.00 m
AREA: 1.54 m² • PERIMETER: 5.54 m



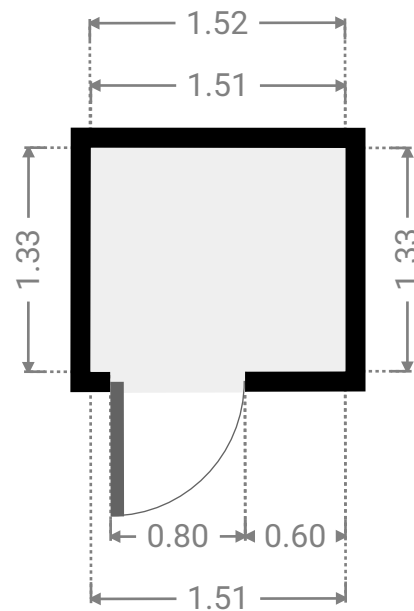
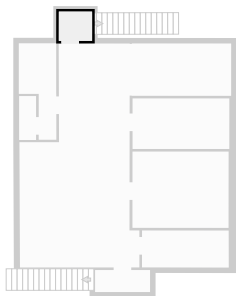
▼ Other
1st Floor

WIDTH: 0.80 m • LENGTH: 1.98 m
AREA: 1.58 m² • PERIMETER: 5.55 m



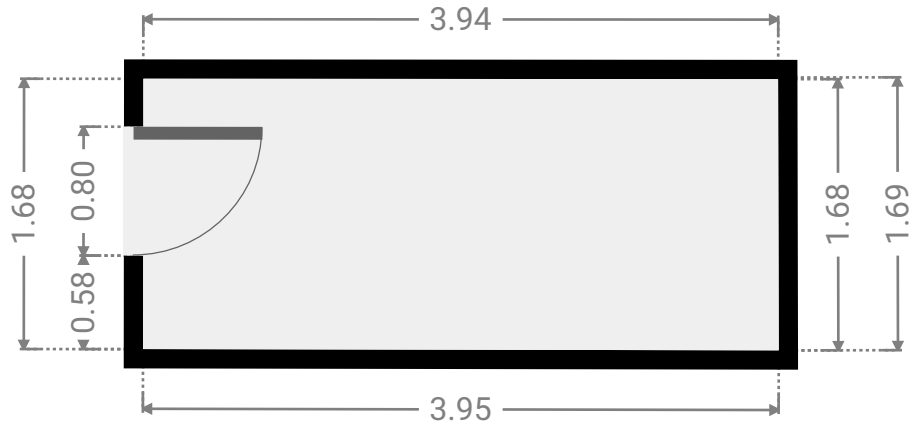
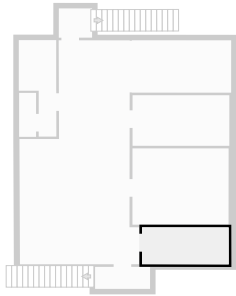
▼ Other
1st Floor

WIDTH: 1.52 m • LENGTH: 1.33 m
AREA: 2.01 m² • PERIMETER: 5.68 m



▼ **Bedroom**
1st Floor

WIDTH: 3.95 m • LENGTH: 1.69 m
AREA: 6.63 m² • PERIMETER: 11.25 m



▼ **Other**
1st Floor

WIDTH: 2.50 m • LENGTH: 1.00 m
AREA: 2.50 m² • PERIMETER: 7.00 m

