

11 Fitzgerald Street

SUBMITTED BY

Ray White Rockhampton Casey
stockers@cqoz.com

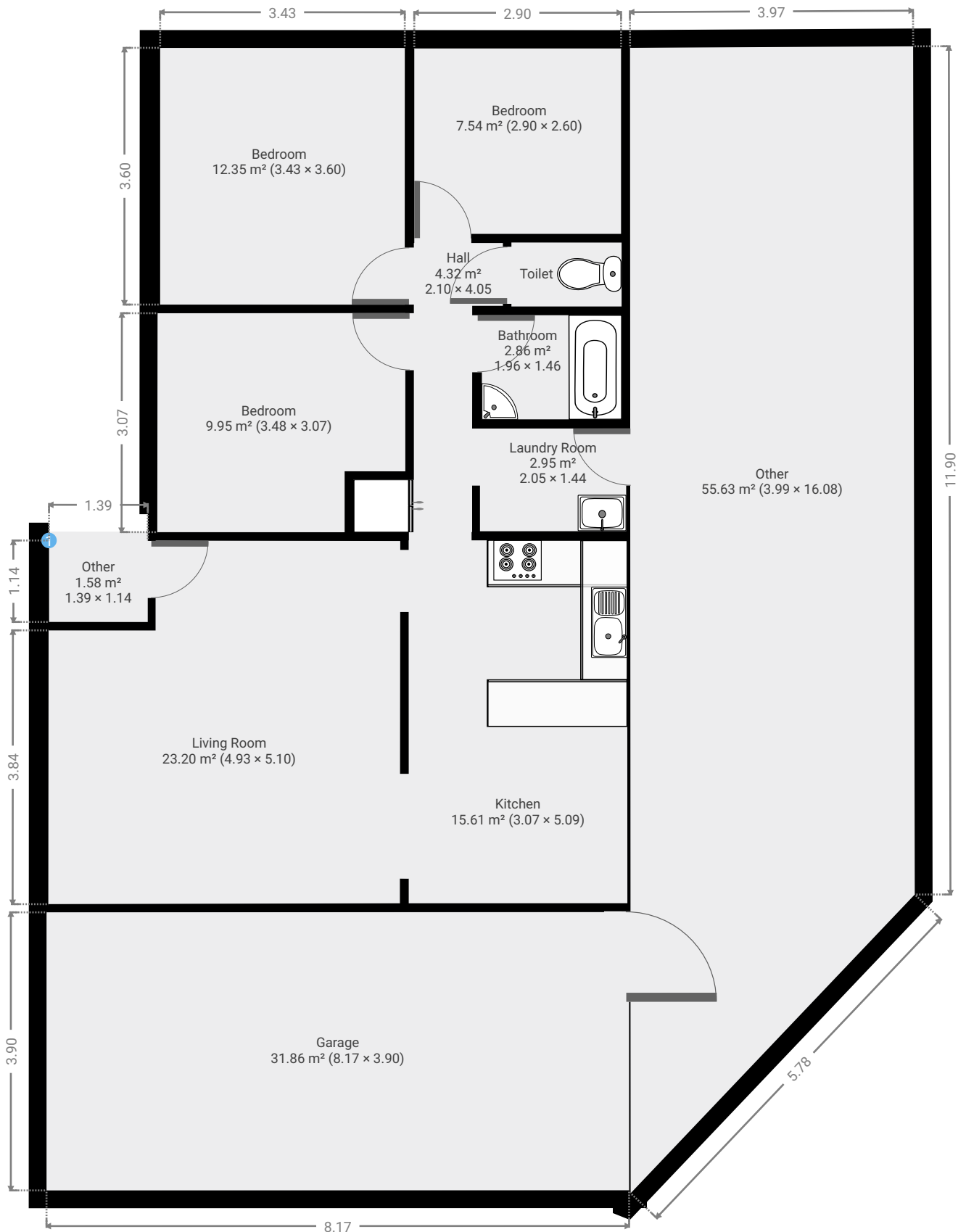
CREATED ON

2022-05-11

Floors

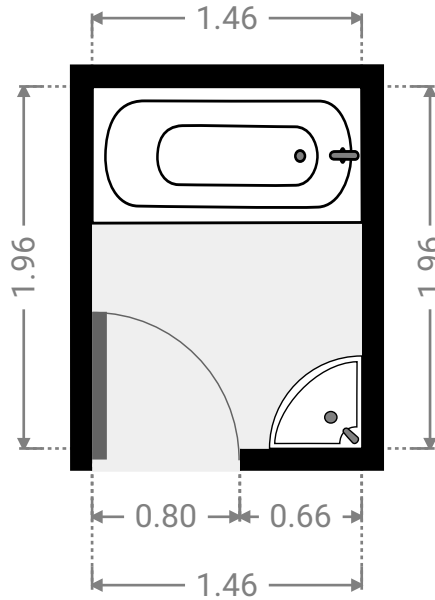
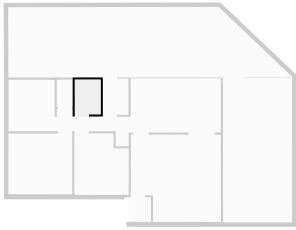
1

▼ Ground Floor



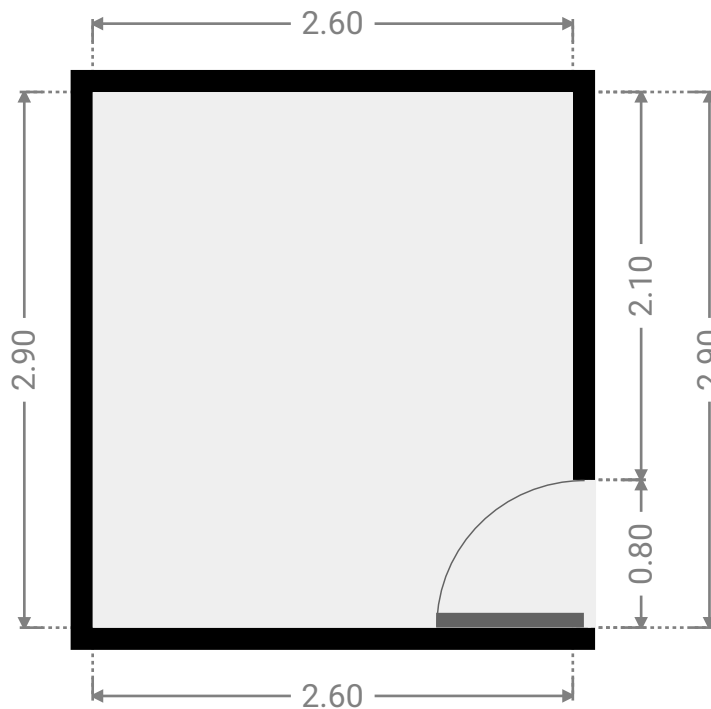
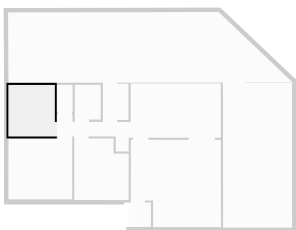
▼ **Bathroom**
Ground Floor

WIDTH: 1.46 m • LENGTH: 1.96 m
AREA: 2.86 m² • PERIMETER: 6.84 m



▼ **Bedroom**
Ground Floor

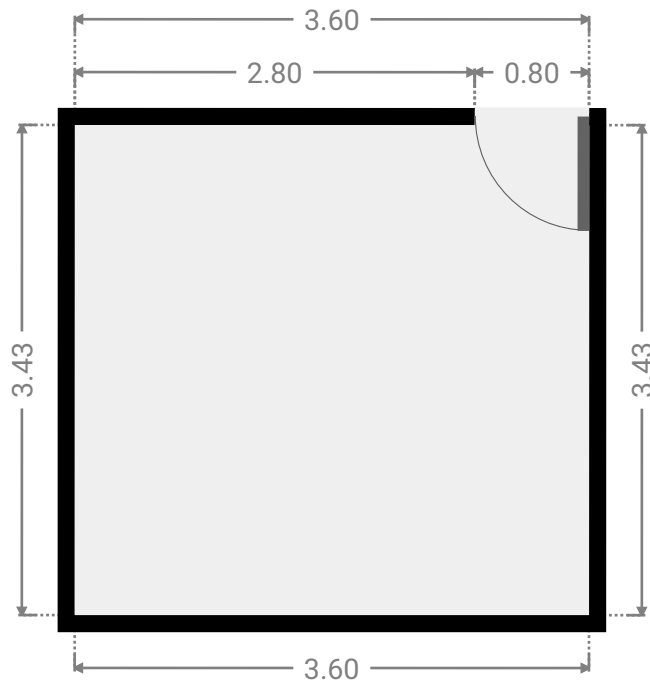
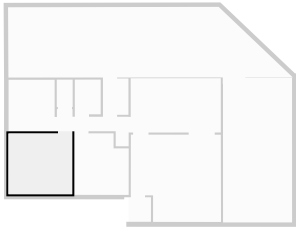
WIDTH: 2.60 m • LENGTH: 2.90 m
AREA: 7.54 m² • PERIMETER: 11.00 m



FLOORS: 1

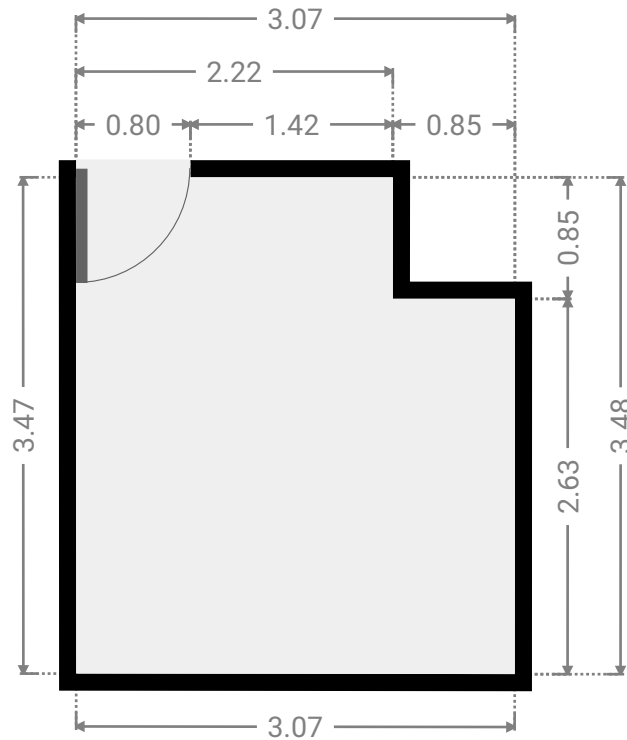
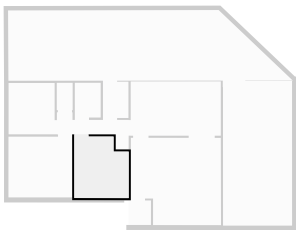
▼ **Bedroom**
Ground Floor

WIDTH: 3.60 m • LENGTH: 3.43 m
AREA: 12.35 m² • PERIMETER: 14.06 m



▼ **Bedroom**
Ground Floor

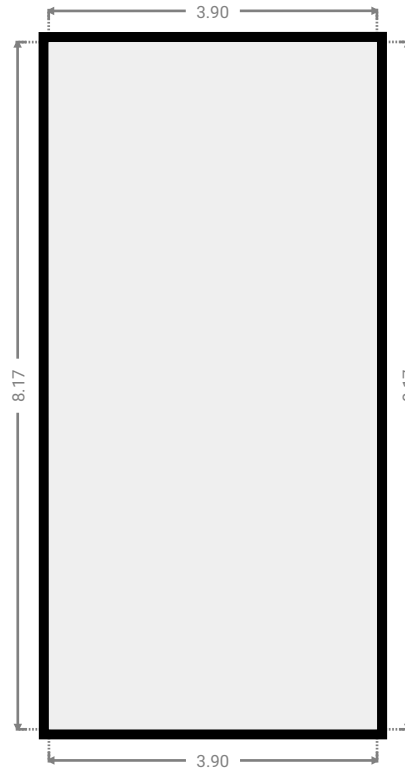
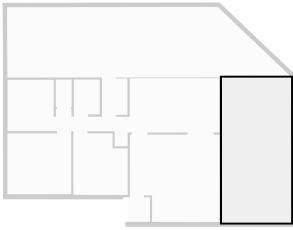
WIDTH: 3.07 m • LENGTH: 3.48 m
AREA: 9.95 m² • PERIMETER: 13.09 m



FLOORS: 1

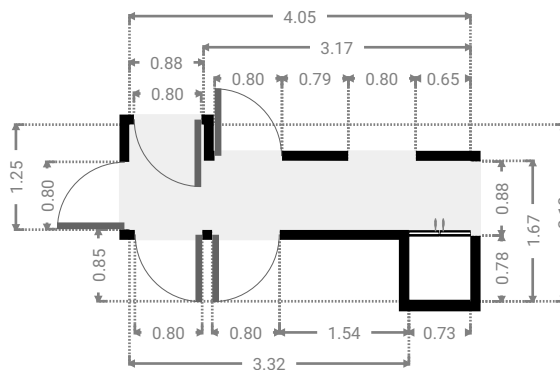
▼ **Garage**
Ground Floor

WIDTH: 3.90 m • LENGTH: 8.17 m
AREA: 31.86 m² • PERIMETER: 24.14 m



▼ **Hall**
Ground Floor

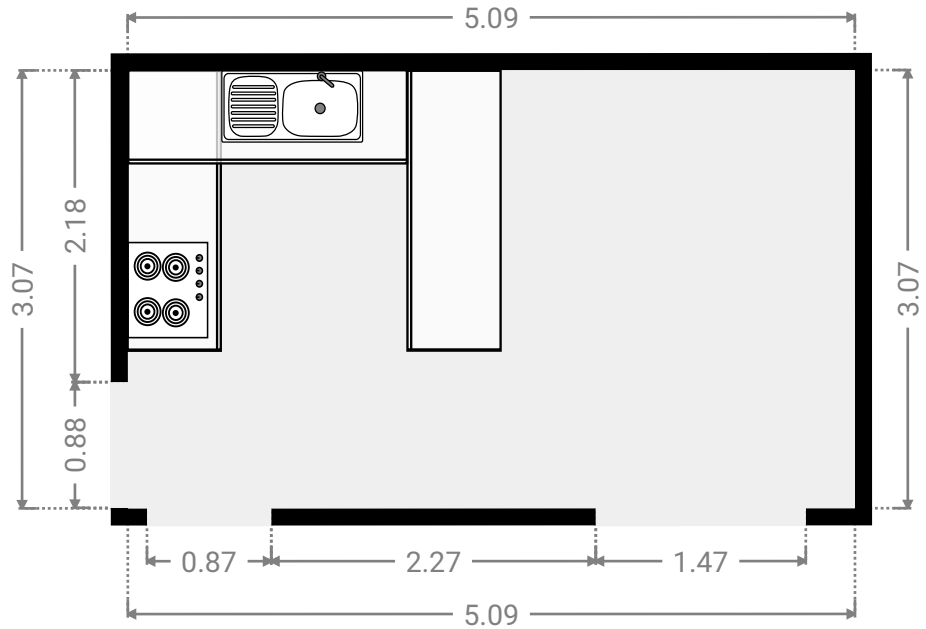
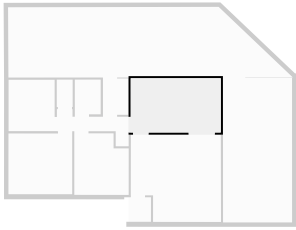
WIDTH: 4.05 m • LENGTH: 2.10 m
AREA: 4.32 m² • PERIMETER: 12.30 m



FLOORS: 1

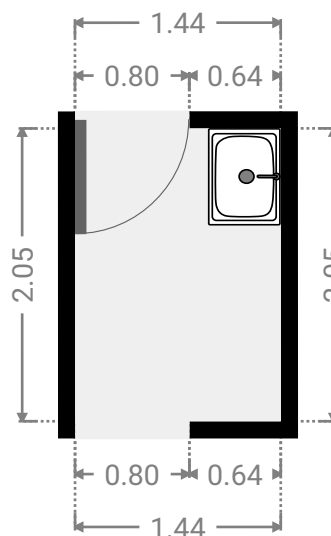
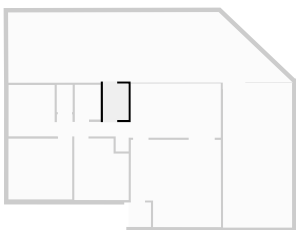
▼ Kitchen
Ground Floor

WIDTH: 5.09 m • LENGTH: 3.07 m
AREA: 15.61 m² • PERIMETER: 16.31 m



▼ Laundry Room
Ground Floor

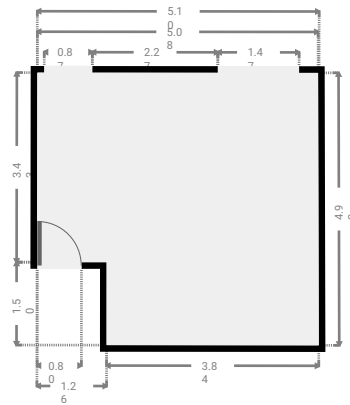
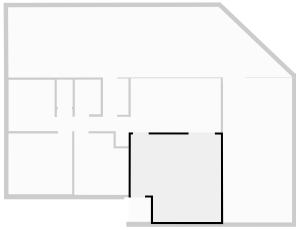
WIDTH: 1.44 m • LENGTH: 2.05 m
AREA: 2.95 m² • PERIMETER: 6.98 m



FLOORS: 1

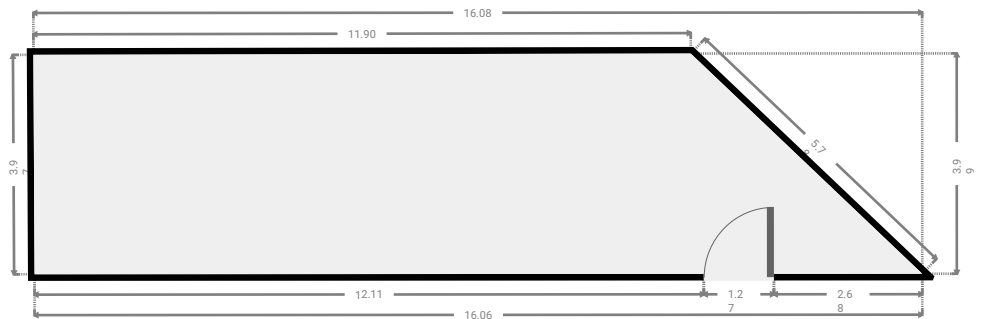
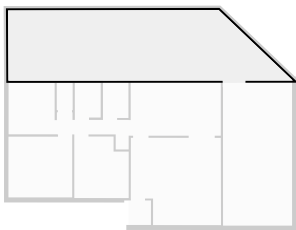
▼ **Living Room**
Ground Floor

WIDTH: 5.10 m • LENGTH: 4.93 m
AREA: 23.20 m² • PERIMETER: 20.04 m



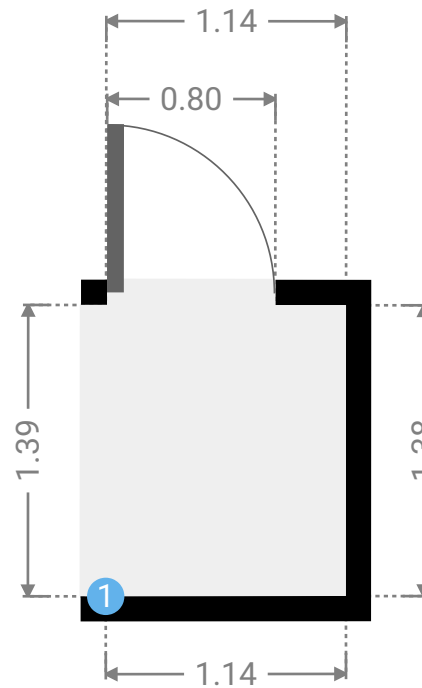
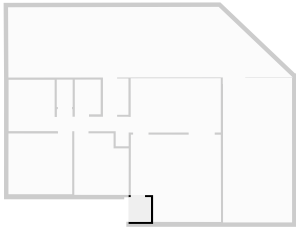
▼ **Other**
Ground Floor

WIDTH: 16.08 m • LENGTH: 3.99 m
AREA: 55.63 m² • PERIMETER: 37.71 m



▼ **Other**
Ground Floor

WIDTH: 1.14 m • LENGTH: 1.39 m
AREA: 1.58 m² • PERIMETER: 5.05 m



▼ **Other/Ground Floor**

1 OPENING

Height
0.00 m



▼ Toilet
Ground Floor

WIDTH: 0.90 m • LENGTH: 1.55 m
AREA: 1.39 m² • PERIMETER: 4.88 m

