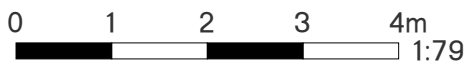
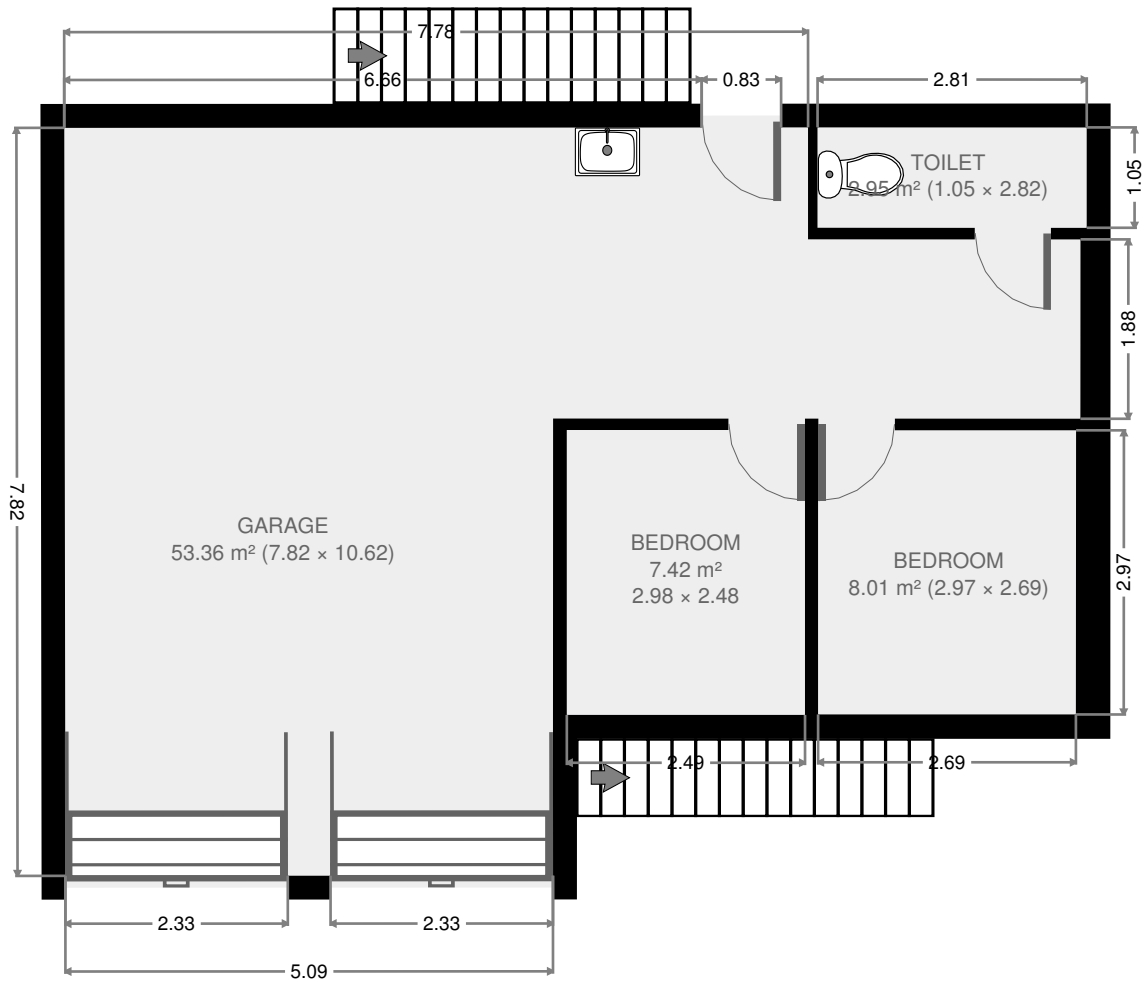


Ground Floor

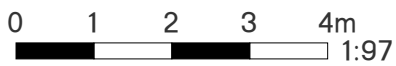
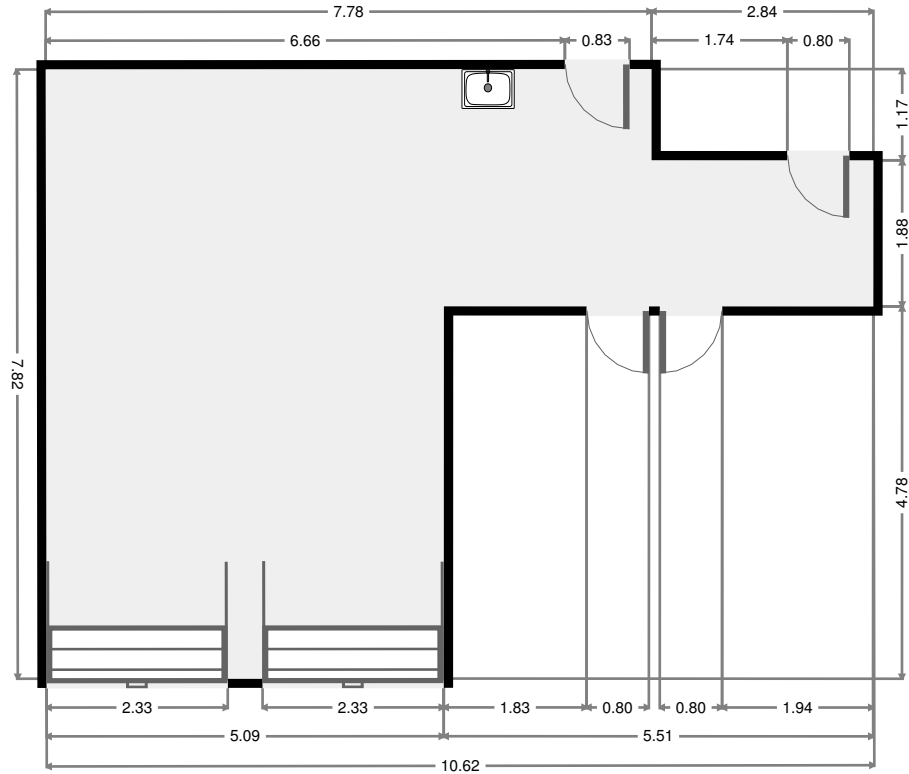
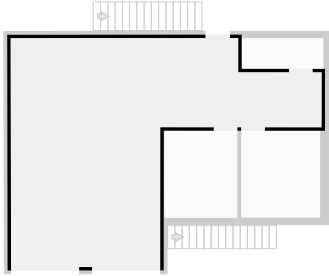


11 Duffy Street

THIS FLOORPLAN IS PROVIDED WITHOUT WARRANTY OF ANY KIND. SENSOPIA DISCLAIMS ANY WARRANTY INCLUDING, WITHOUT LIMITATION, SATISFACTORY QUALITY OR ACCURACY OF DIMENSIONS.

Garage

Width: 7.82 m
Length: 10.62 m
Area: 53.36 m²
Perimeter: 36.88 m
Ceiling Height: 2.17 m



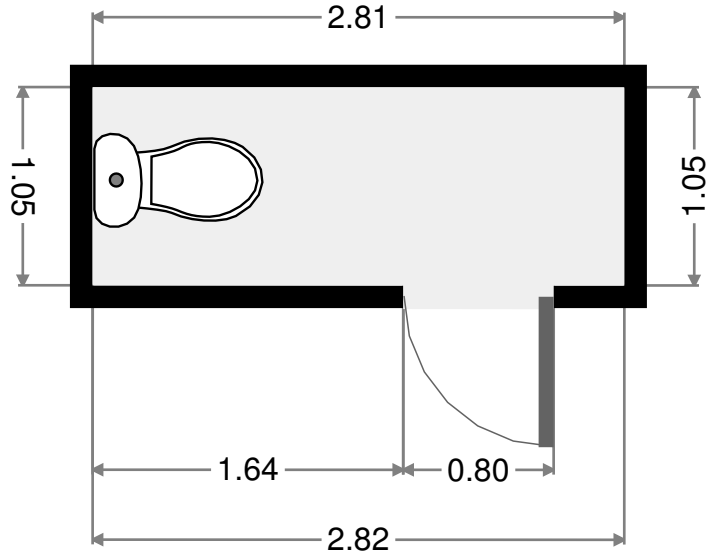
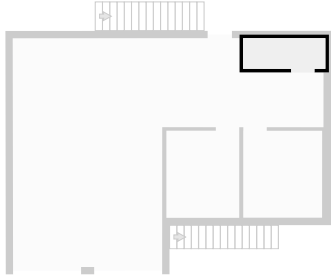
THIS FLOORPLAN IS PROVIDED WITHOUT WARRANTY OF ANY KIND. SENSOPIA DISCLAIMS ANY WARRANTY INCLUDING, WITHOUT LIMITATION, SATISFACTORY QUALITY OR ACCURACY OF DIMENSIONS.

11 Duffy Street

2017-01-17

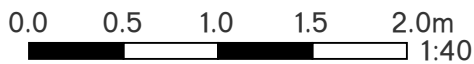
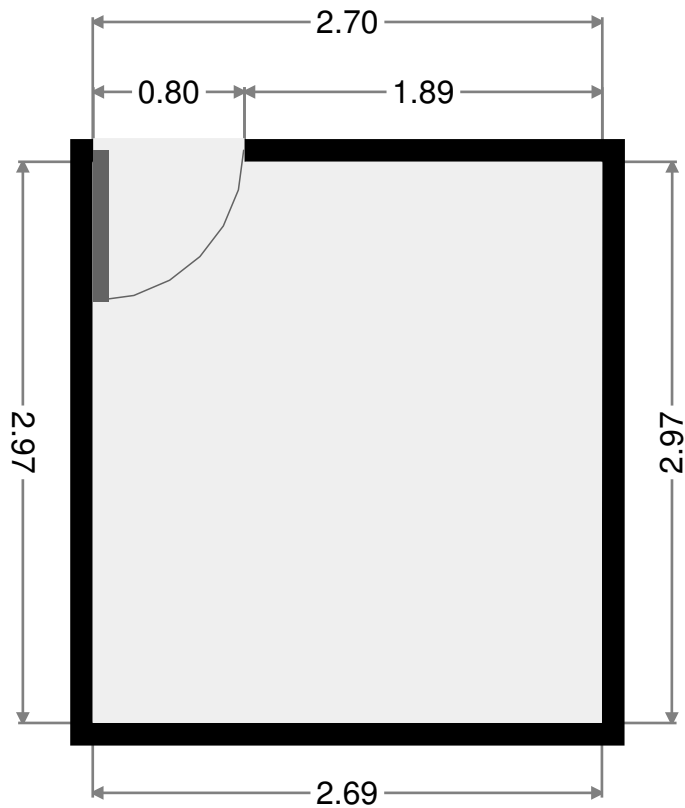
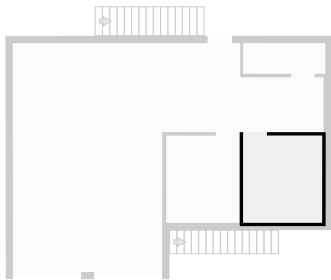
Toilet

Width: 1.05 m
 Length: 2.82 m
 Area: 2.95 m²
 Perimeter: 7.73 m



Bedroom

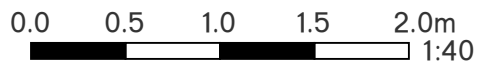
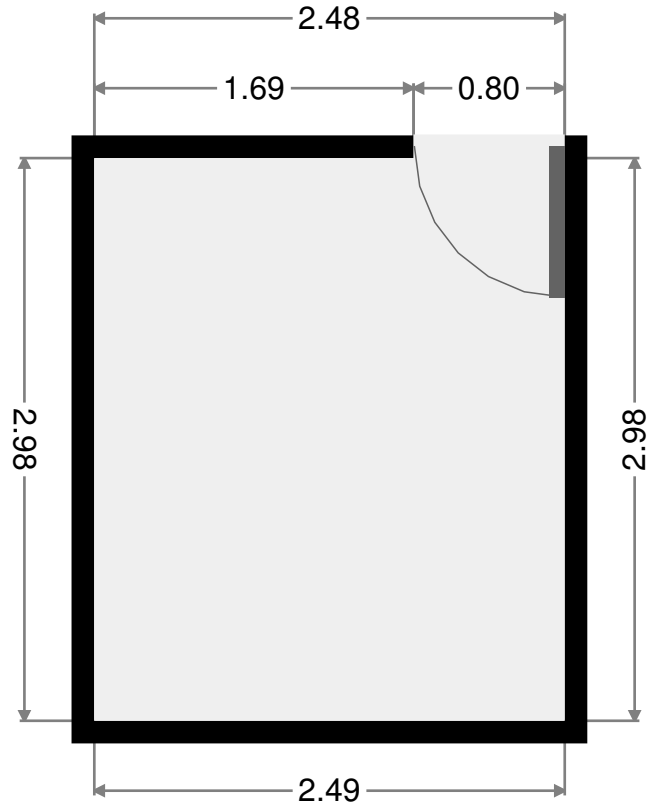
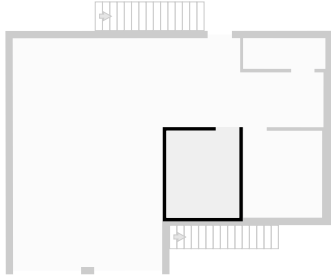
Width: 2.69 m
 Length: 2.97 m
 Area: 8.01 m²
 Perimeter: 11.33 m



THIS FLOORPLAN IS PROVIDED WITHOUT WARRANTY OF ANY KIND. SENSOPIA DISCLAIMS ANY WARRANTY INCLUDING, WITHOUT LIMITATION, SATISFACTORY QUALITY OR ACCURACY OF DIMENSIONS.

Bedroom

Width: 2.48 m
Length: 2.98 m
Area: 7.42 m²
Perimeter: 10.94 m

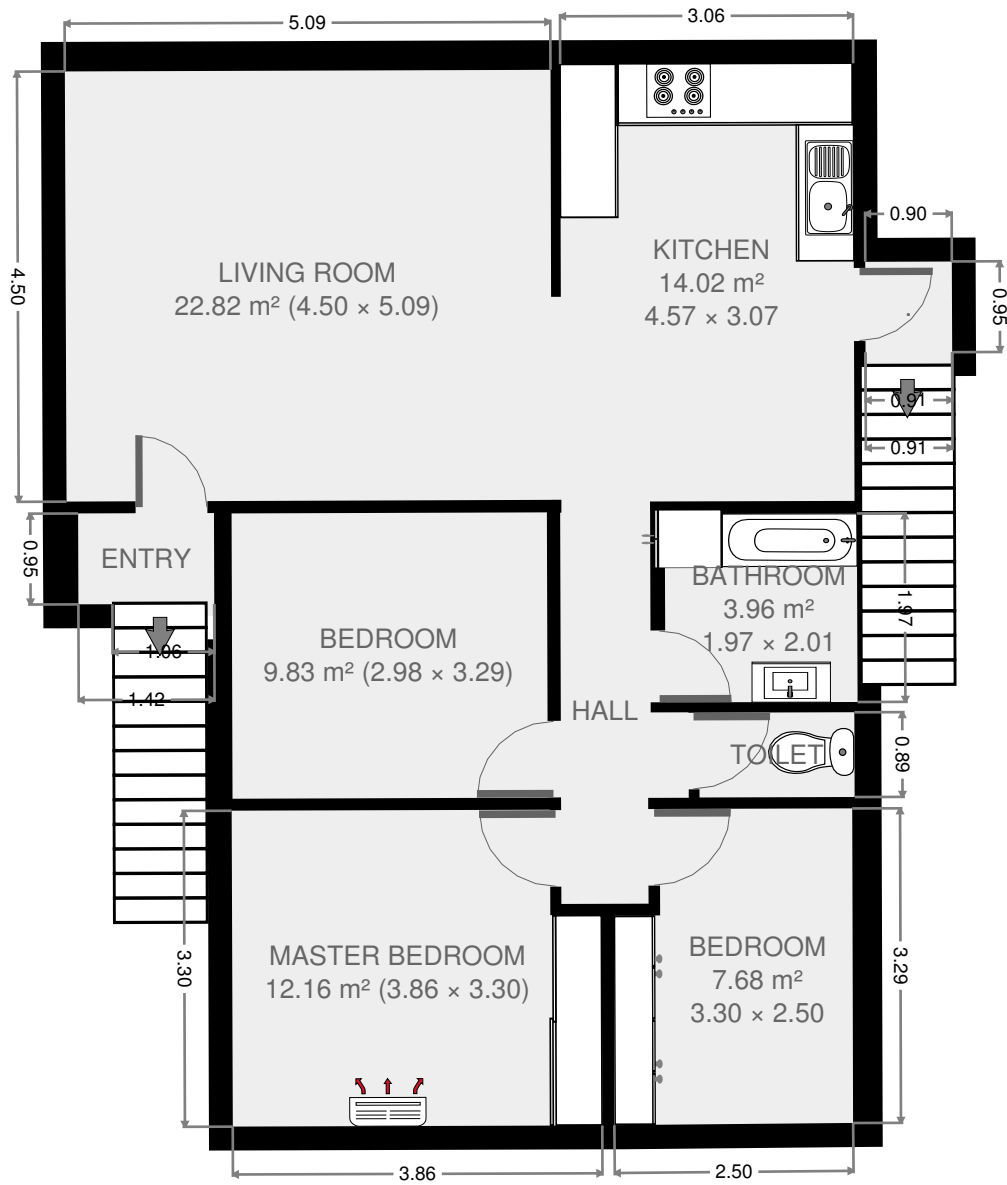


THIS FLOORPLAN IS PROVIDED WITHOUT WARRANTY OF ANY KIND. SENSOPIA DISCLAIMS ANY WARRANTY INCLUDING, WITHOUT LIMITATION, SATISFACTORY QUALITY OR ACCURACY OF DIMENSIONS.

11 Duffy Street

2017-01-17

1st Floor

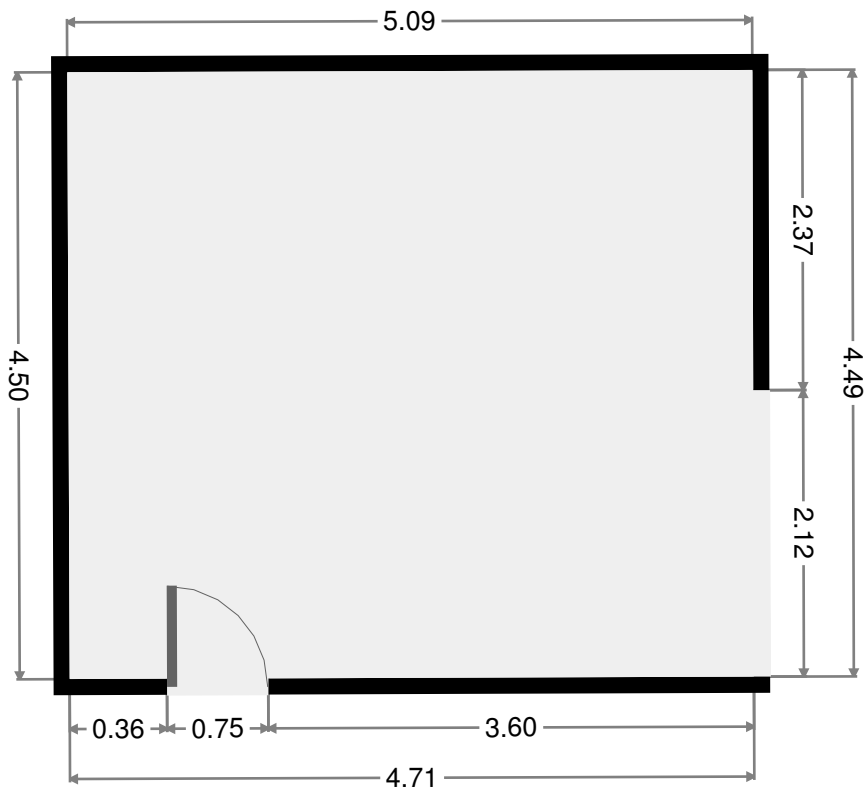
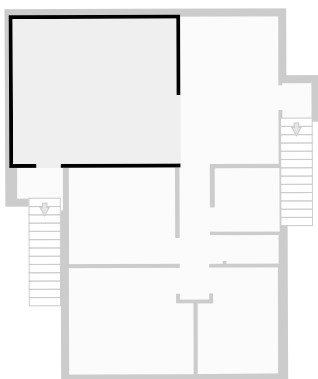


THIS FLOORPLAN IS PROVIDED WITHOUT WARRANTY OF ANY KIND. SENSOPIA DISCLAIMS ANY WARRANTY INCLUDING, WITHOUT LIMITATION, SATISFACTORY QUALITY OR ACCURACY OF DIMENSIONS.

11 Duffy Street

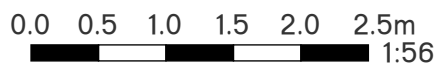
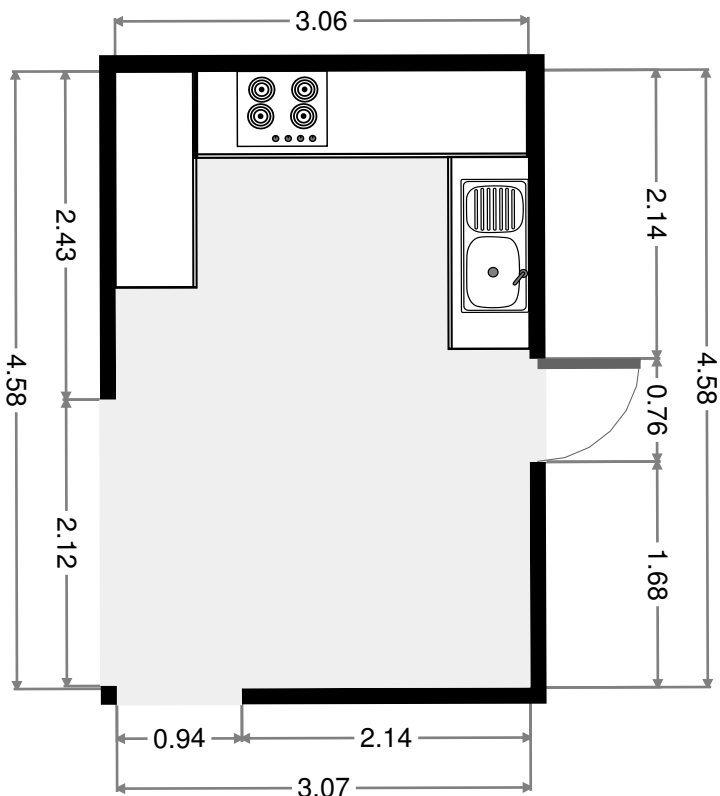
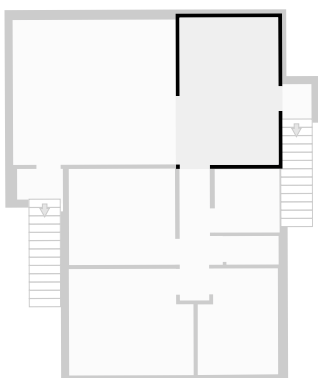
Living Room

Width: 4.50 m
 Length: 5.09 m
 Area: 22.82 m²
 Perimeter: 19.14 m



Kitchen

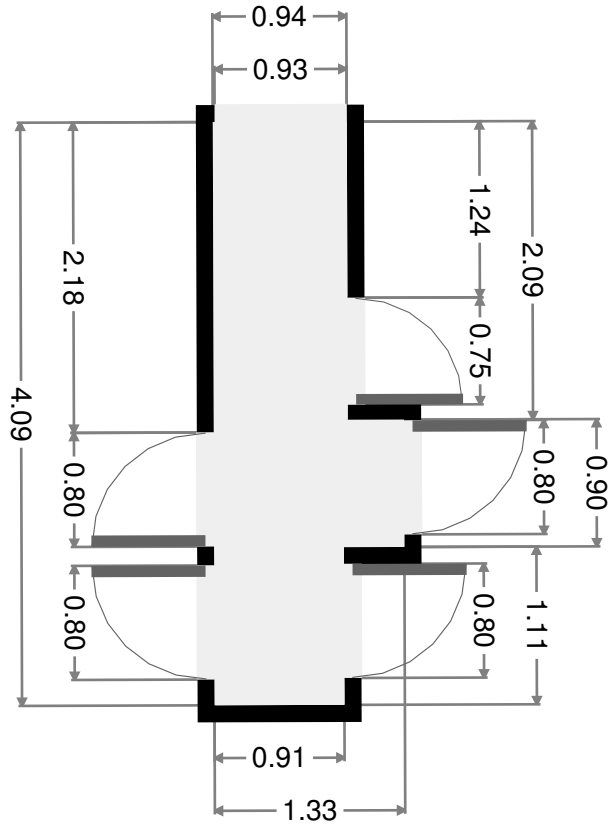
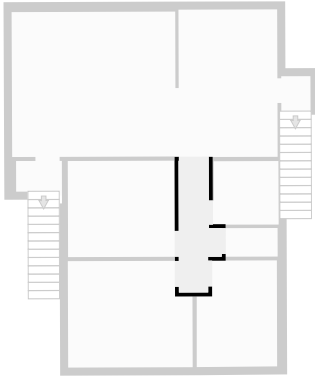
Width: 3.07 m
 Length: 4.57 m
 Area: 14.02 m²
 Perimeter: 15.28 m



THIS FLOORPLAN IS PROVIDED WITHOUT WARRANTY OF ANY KIND. SENSOPAI DISCLAIMS ANY WARRANTY INCLUDING, WITHOUT LIMITATION, SATISFACTORY QUALITY OR ACCURACY OF DIMENSIONS.

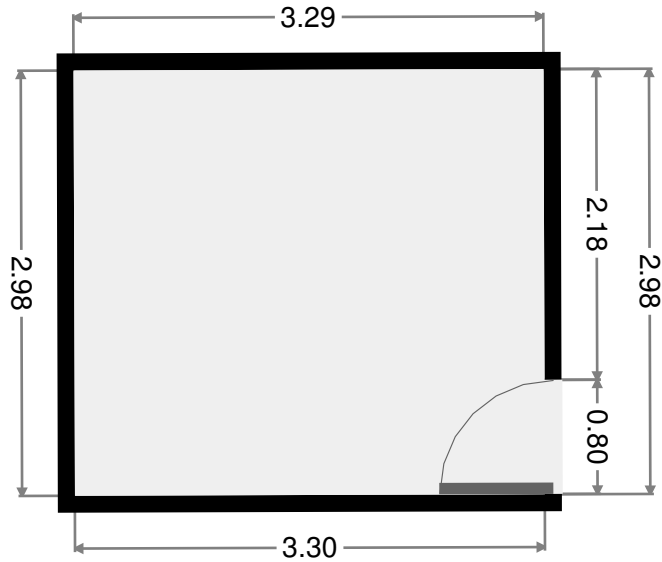
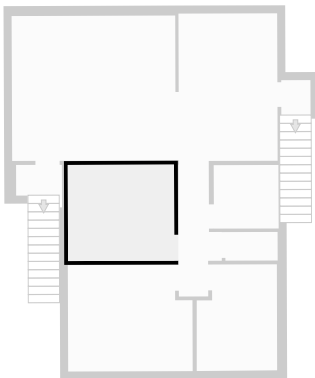
Hall

Width: 1.33 m
 Length: 4.09 m
 Area: 4.17 m²
 Perimeter: 10.85 m



Bedroom

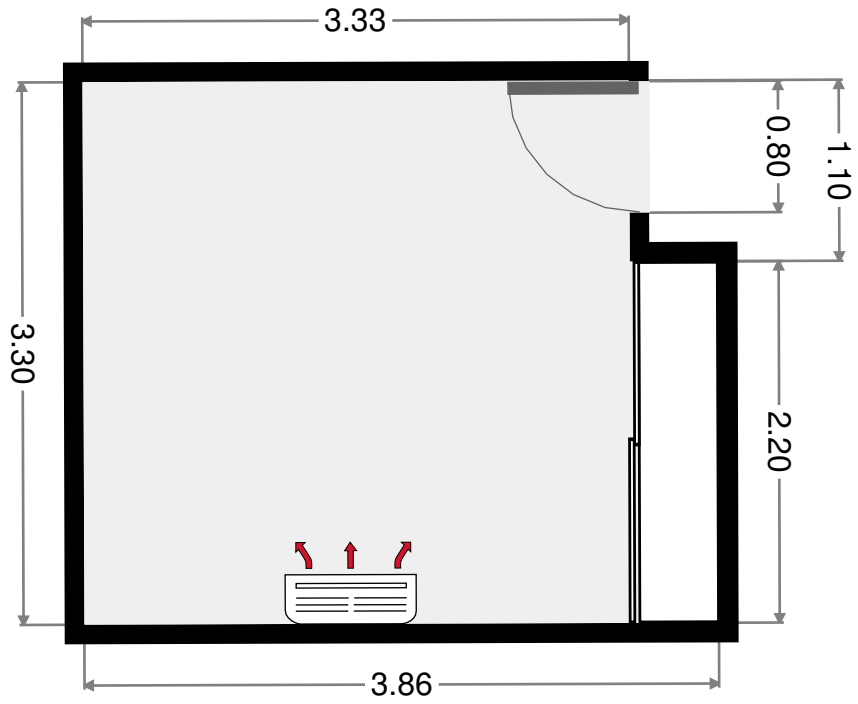
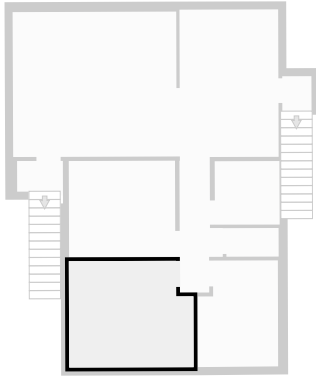
Width: 2.98 m
 Length: 3.29 m
 Area: 9.83 m²
 Perimeter: 12.56 m



THIS FLOORPLAN IS PROVIDED WITHOUT WARRANTY OF ANY KIND. SENSOPIA DISCLAIMS ANY WARRANTY INCLUDING, WITHOUT LIMITATION, SATISFACTORY QUALITY OR ACCURACY OF DIMENSIONS.

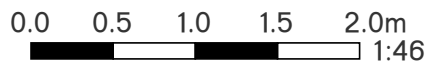
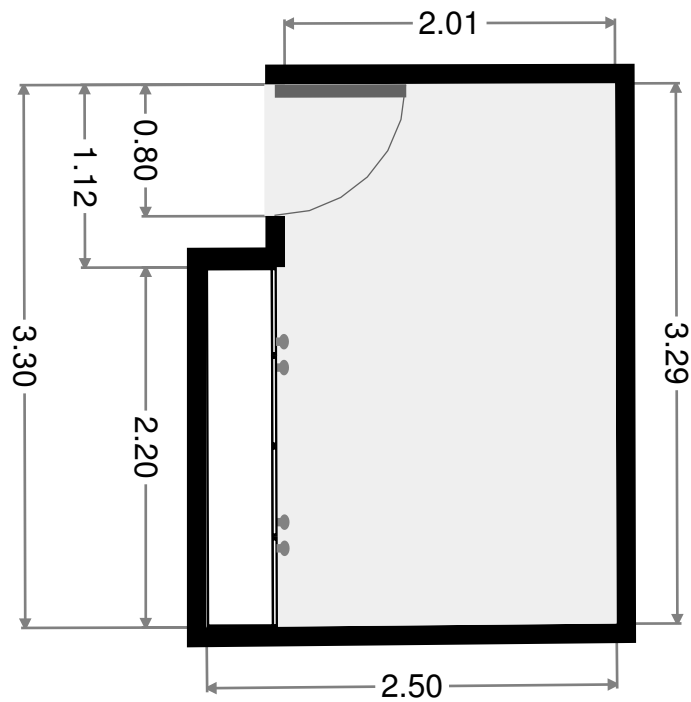
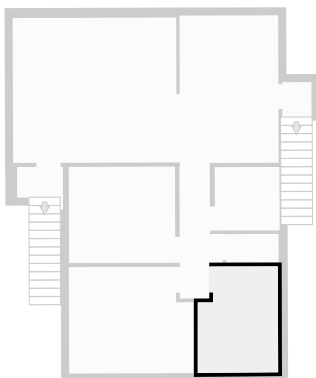
Master Bedroom

Width: 3.30 m
 Length: 3.86 m
 Area: 12.16 m²
 Perimeter: 14.33 m



Bedroom

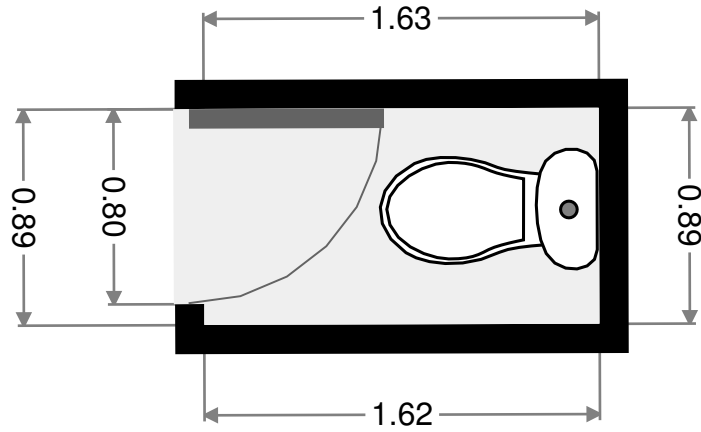
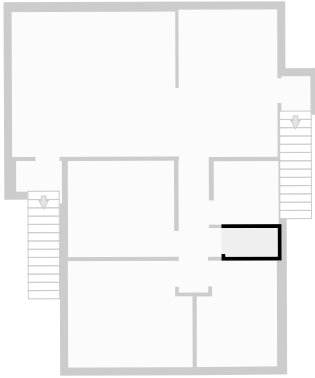
Width: 2.50 m
 Length: 3.30 m
 Area: 7.68 m²
 Perimeter: 11.58 m



THIS FLOORPLAN IS PROVIDED WITHOUT WARRANTY OF ANY KIND. SENSOPIA DISCLAIMS ANY WARRANTY INCLUDING, WITHOUT LIMITATION, SATISFACTORY QUALITY OR ACCURACY OF DIMENSIONS.

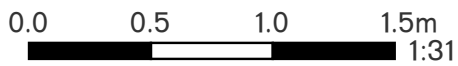
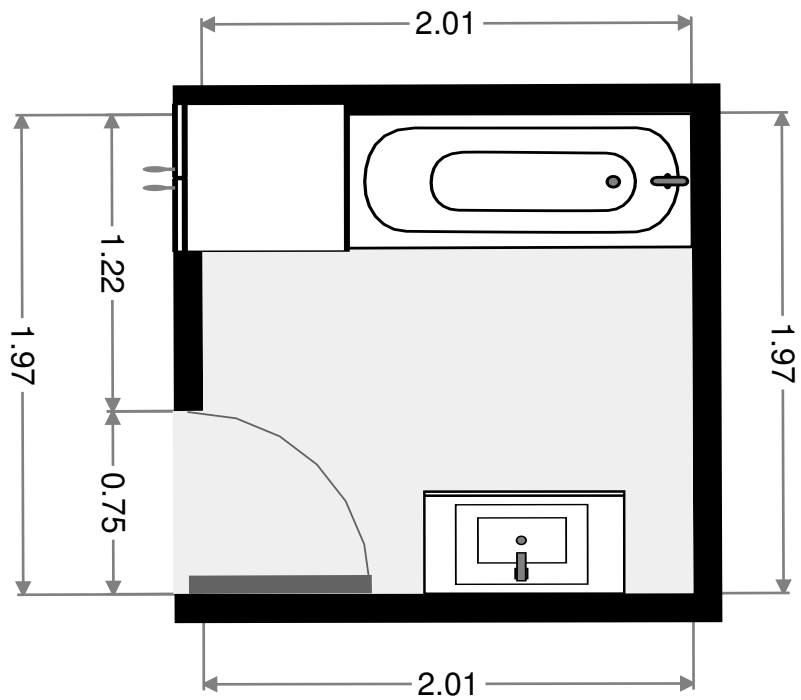
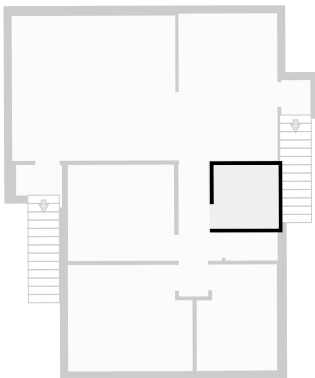
Toilet

Width: 0.89 m
Length: 1.63 m
Area: 1.44 m²
Perimeter: 5.02 m



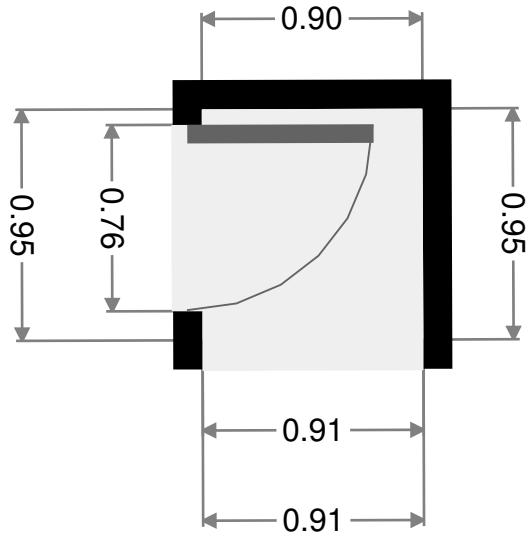
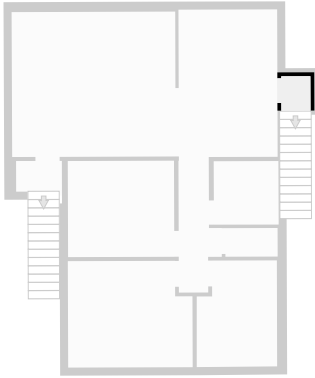
Bathroom

Width: 1.97 m
Length: 2.01 m
Area: 3.96 m²
Perimeter: 7.96 m



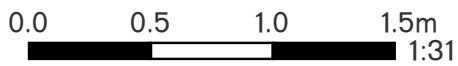
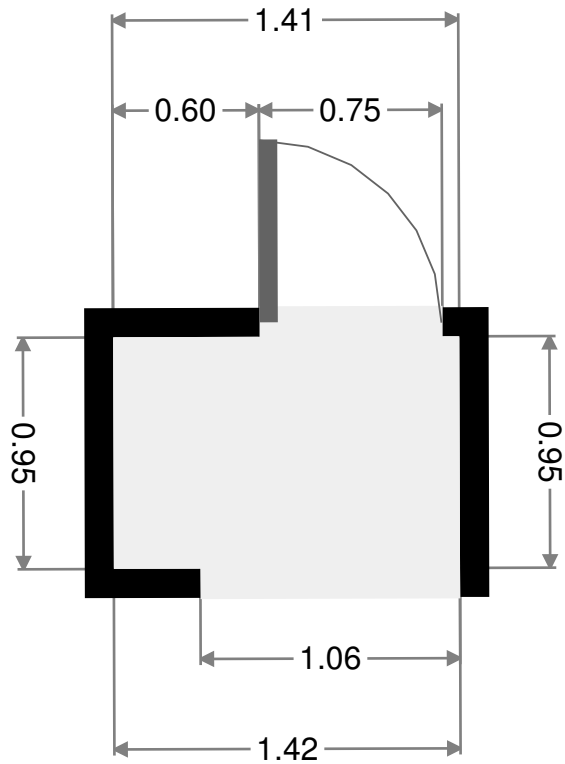
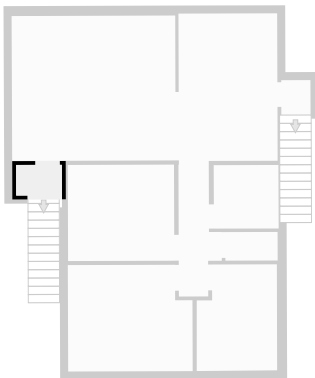
THIS FLOORPLAN IS PROVIDED WITHOUT WARRANTY OF ANY KIND. SENSOPIA DISCLAIMS ANY WARRANTY INCLUDING, WITHOUT LIMITATION, SATISFACTORY QUALITY OR ACCURACY OF DIMENSIONS.

- Width: 0.91 m
 Length: 0.95 m
 Area: 0.86 m²
 Perimeter: 3.71 m



Entry

- Width: 0.95 m
 Length: 1.41 m
 Area: 1.35 m²
 Perimeter: 4.74 m



THIS FLOORPLAN IS PROVIDED WITHOUT WARRANTY OF ANY KIND. SENSOPIA DISCLAIMS ANY WARRANTY INCLUDING, WITHOUT LIMITATION, SATISFACTORY QUALITY OR ACCURACY OF DIMENSIONS.