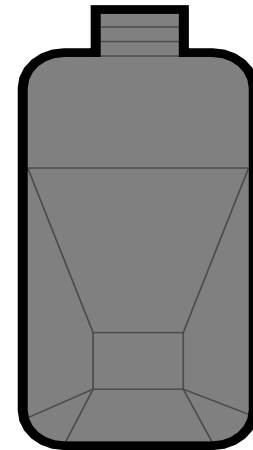
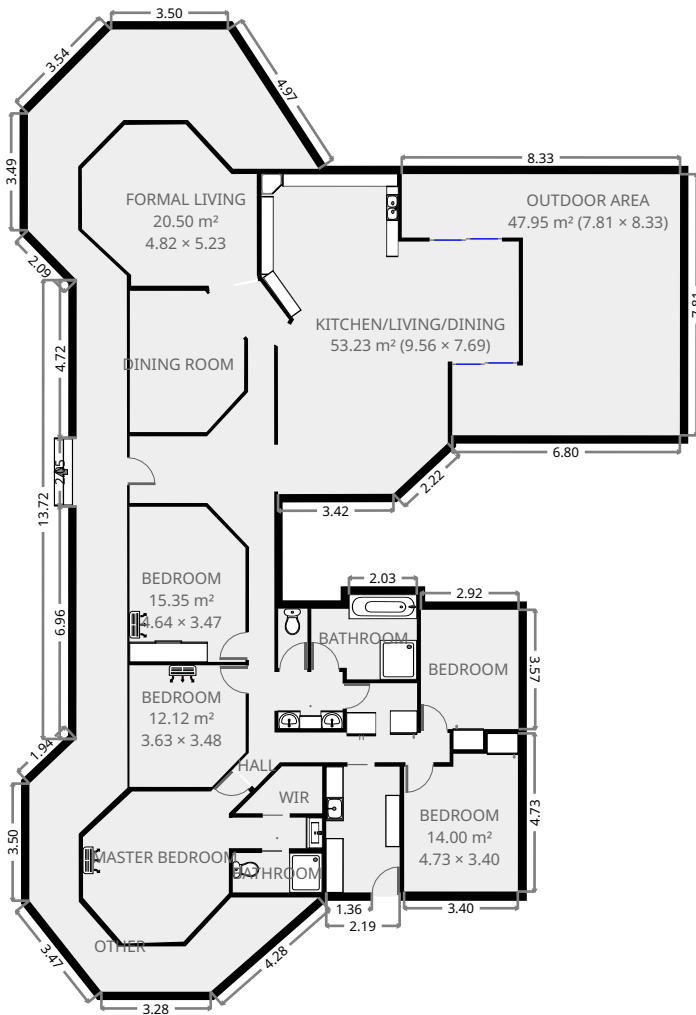
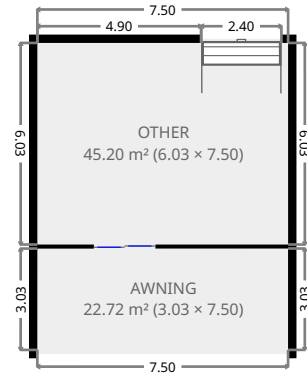
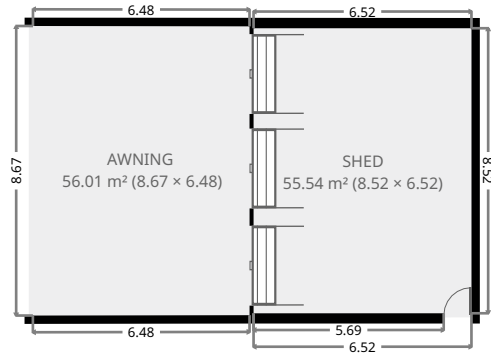


11 Constance Avenue

Ground Floor



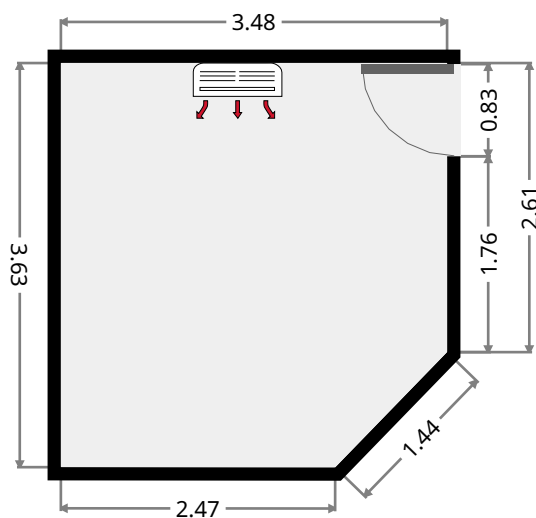
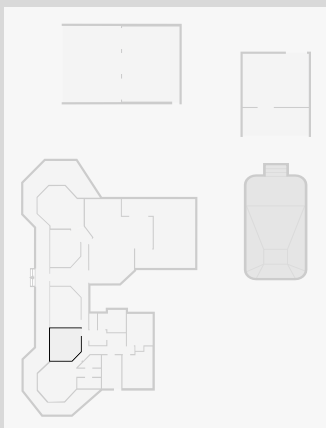
THIS FLOORPLAN IS PROVIDED WITHOUT WARRANTY OF ANY KIND. SENSOPIA DISCLAIMS ANY WARRANTY INCLUDING, WITHOUT LIMITATION, SATISFACTORY QUALITY OR ACCURACY OF DIMENSIONS.



11 Constance Avenue

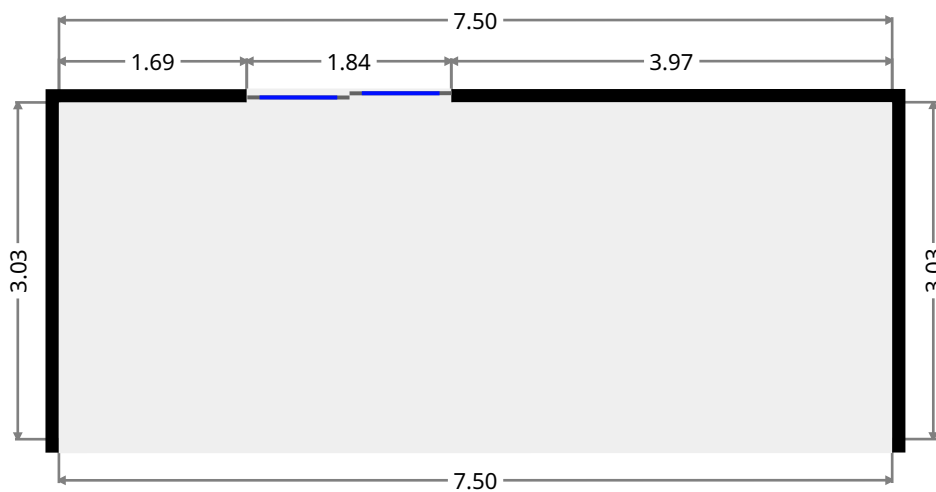
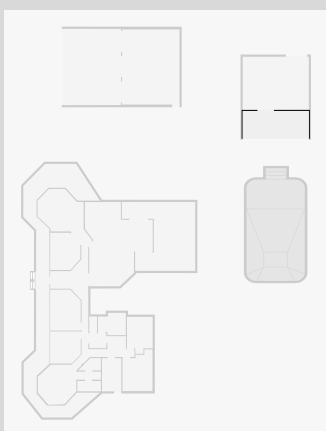
Bedroom

Width: 3.48 m
Length: 3.63 m
Area: 12.12 m²
Perimeter: 13.63 m



Awning

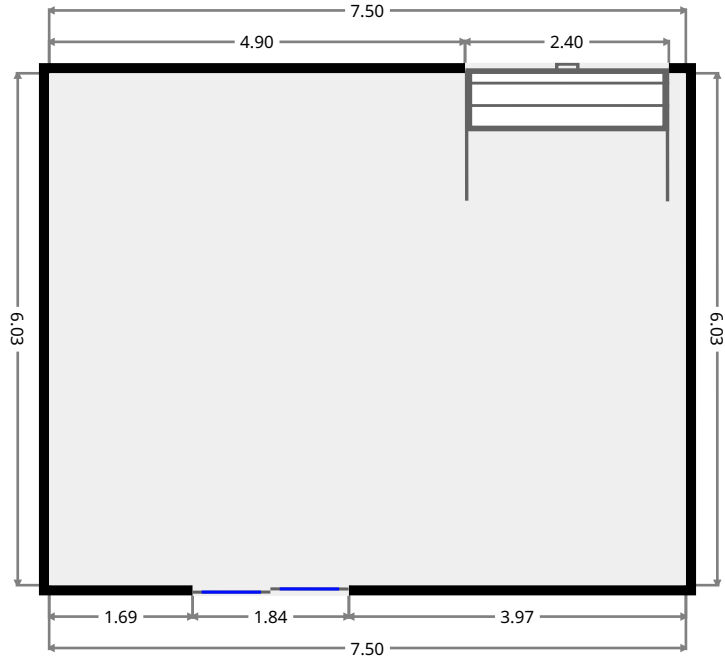
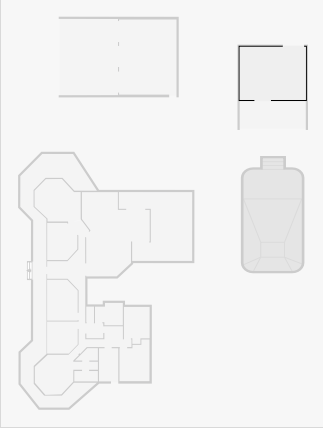
Width: 3.03 m
Length: 7.50 m
Area: 22.72 m²
Perimeter: 21.06 m



11 Constance Avenue

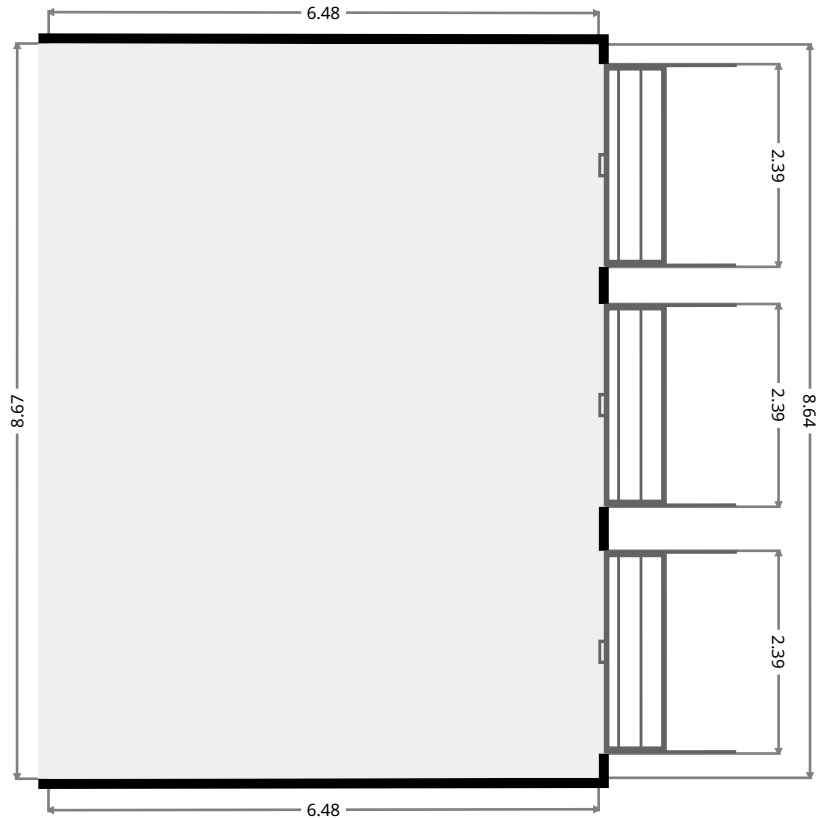
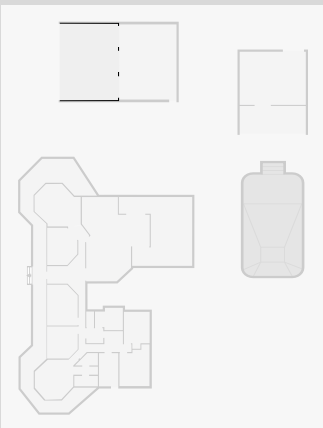
Other

Width: 6.03 m
 Length: 7.50 m
 Area: 45.20 m²
 Perimeter: 27.05 m



Awning

Width: 6.48 m
 Length: 8.67 m
 Area: 56.01 m²
 Perimeter: 30.25 m

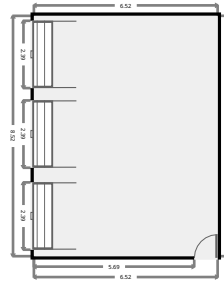
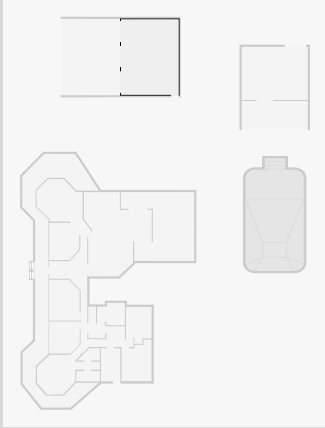


THIS FLOORPLAN IS PROVIDED WITHOUT WARRANTY OF ANY KIND. SENSOPIA DISCLAIMS ANY WARRANTY INCLUDING, WITHOUT LIMITATION, SATISFACTORY QUALITY OR ACCURACY OF DIMENSIONS.

11 Constance Avenue

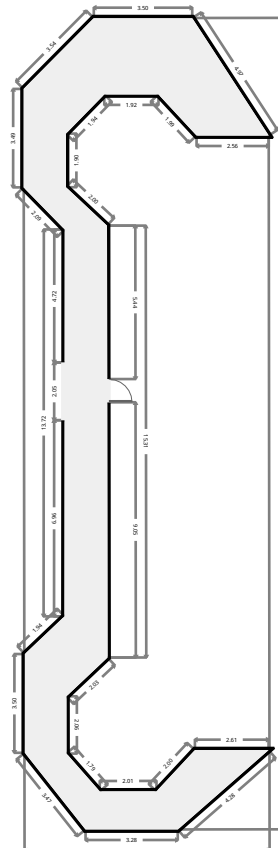
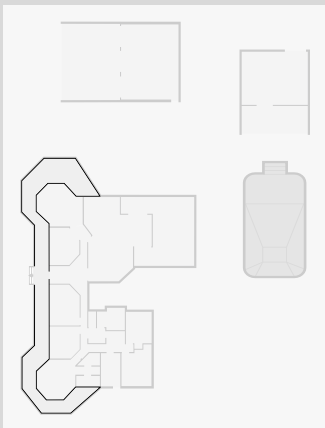
Shed

Width: 6.52 m
 Length: 8.52 m
 Area: 55.54 m²
 Perimeter: 30.08 m



Other

Width: 8.69 m
 Length: 28.77 m
 Area: 69.64 m²
 Perimeter: 87.82 m

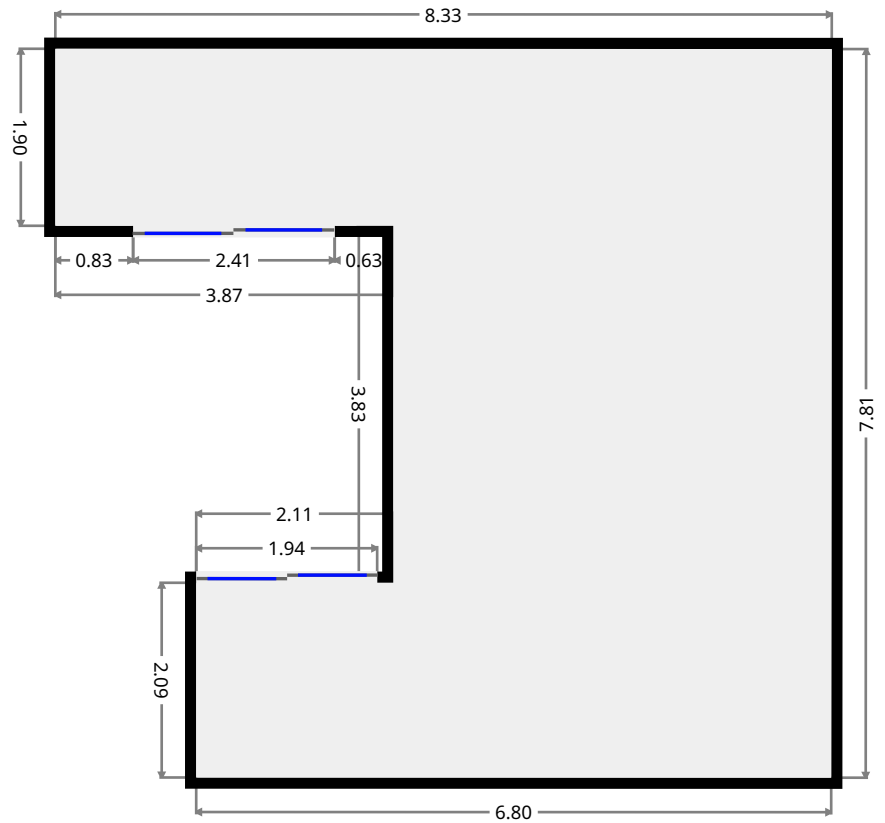
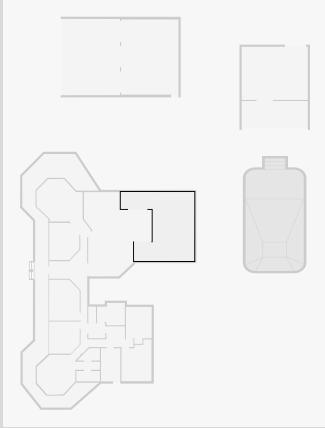


THIS FLOORPLAN IS PROVIDED WITHOUT WARRANTY OF ANY KIND. SENSOPIA DISCLAIMS ANY WARRANTY INCLUDING, WITHOUT LIMITATION, SATISFACTORY QUALITY OR ACCURACY OF DIMENSIONS.

11 Constance Avenue

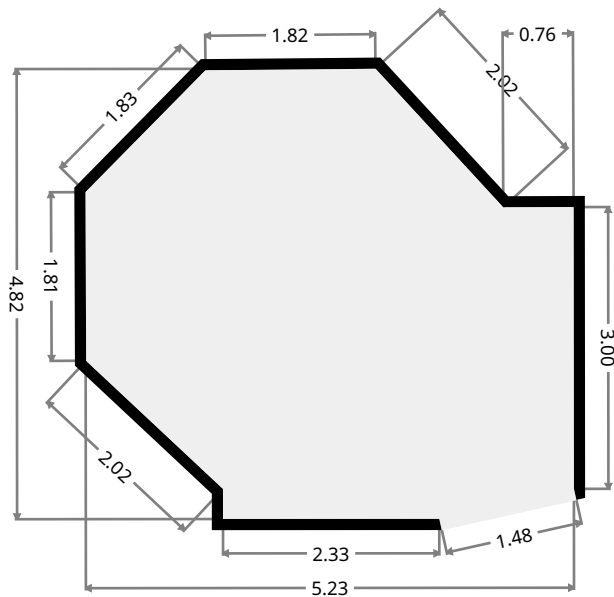
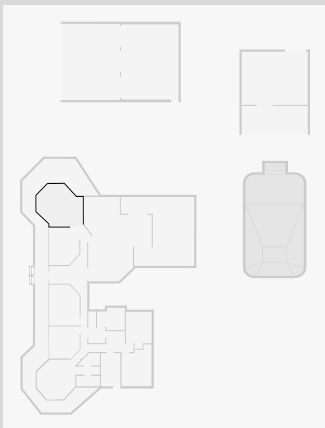
Outdoor Area

Width: 7.81 m
 Length: 8.33 m
 Area: 47.95 m²
 Perimeter: 36.48 m



Formal Living

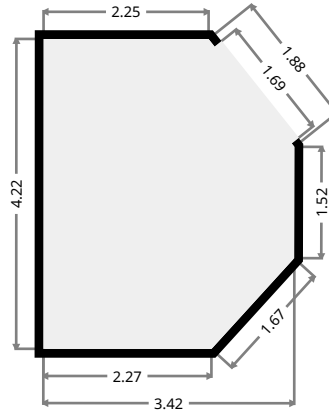
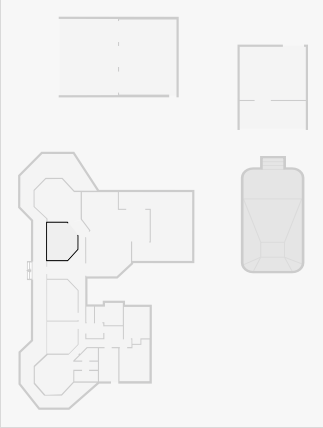
Width: 4.82 m
 Length: 5.23 m
 Area: 20.50 m²
 Perimeter: 17.38 m



11 Constance Avenue

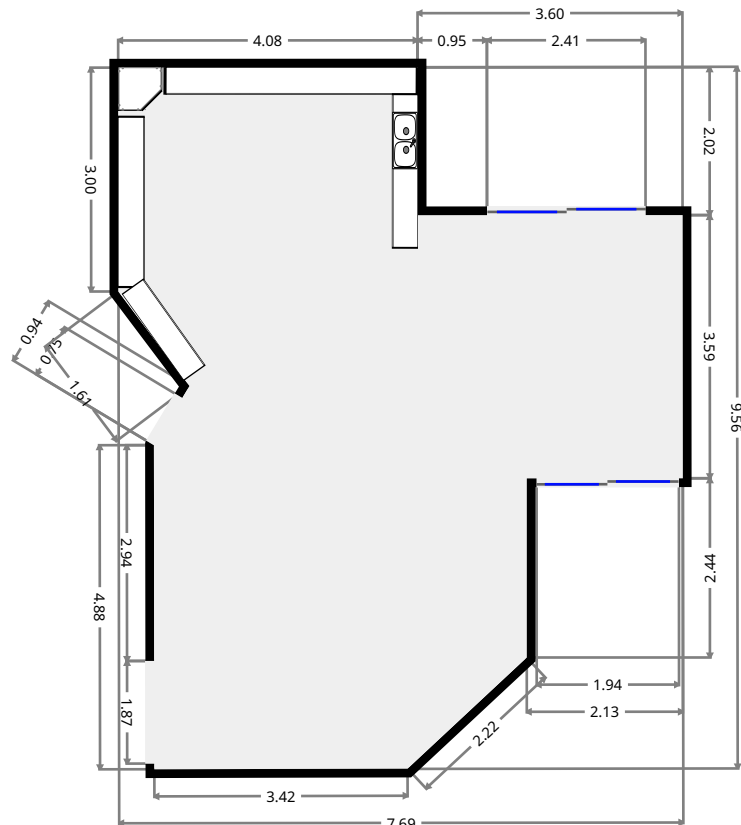
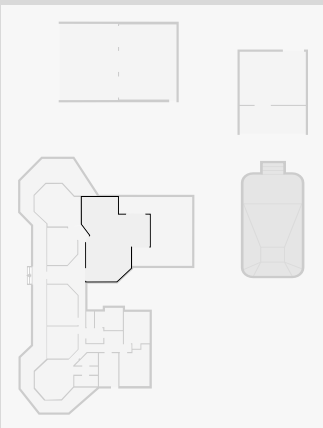
Dining Room

Width: 3.42 m
 Length: 4.22 m
 Area: 12.88 m²
 Perimeter: 13.83 m



Kitchen/Living/Dining

Width: 7.69 m
 Length: 9.56 m
 Area: 53.23 m²
 Perimeter: 33.55 m

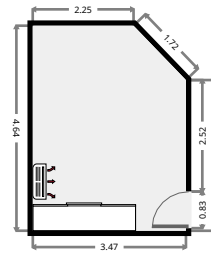
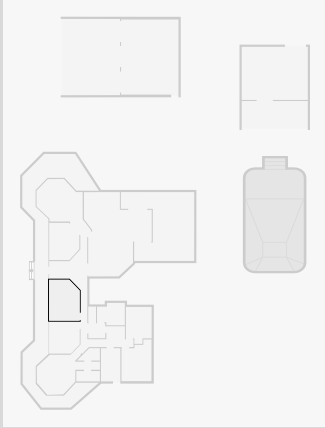


THIS FLOORPLAN IS PROVIDED WITHOUT WARRANTY OF ANY KIND. SENSOPIA DISCLAIMS ANY WARRANTY INCLUDING, WITHOUT LIMITATION, SATISFACTORY QUALITY OR ACCURACY OF DIMENSIONS.

11 Constance Avenue

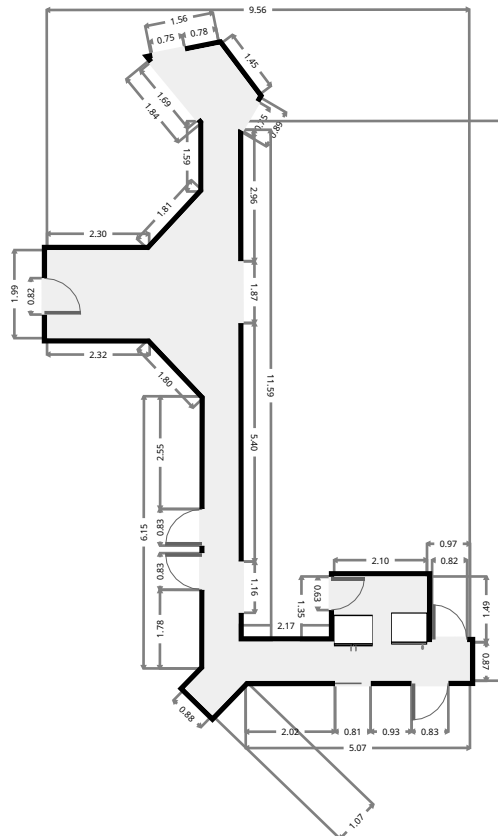
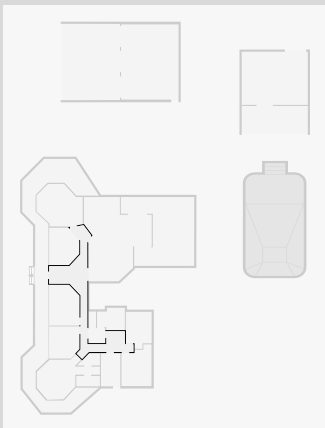
Bedroom

Width: 3.47 m
 Length: 4.64 m
 Area: 15.35 m²
 Perimeter: 15.50 m



Hall

Width: 9.56 m
 Length: 12.67 m
 Area: 29.27 m²
 Perimeter: 52.05 m

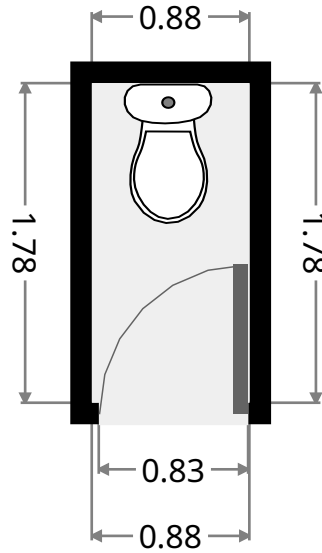
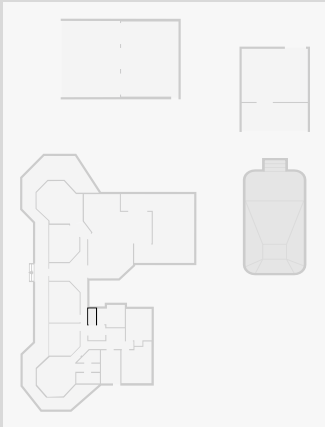


THIS FLOORPLAN IS PROVIDED WITHOUT WARRANTY OF ANY KIND. SENSOPIA DISCLAIMS ANY WARRANTY INCLUDING, WITHOUT LIMITATION, SATISFACTORY QUALITY OR ACCURACY OF DIMENSIONS.

11 Constance Avenue

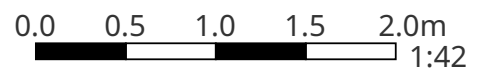
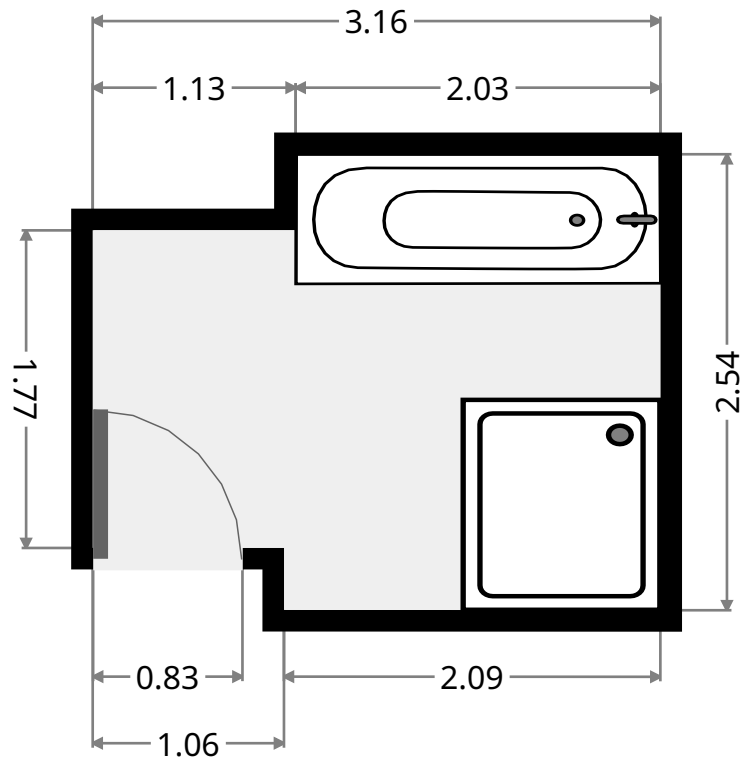
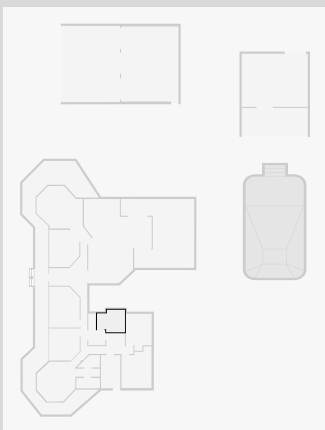
Toilet

Width: 0.88 m
 Length: 1.78 m
 Area: 1.56 m²
 Perimeter: 5.30 m



Bathroom

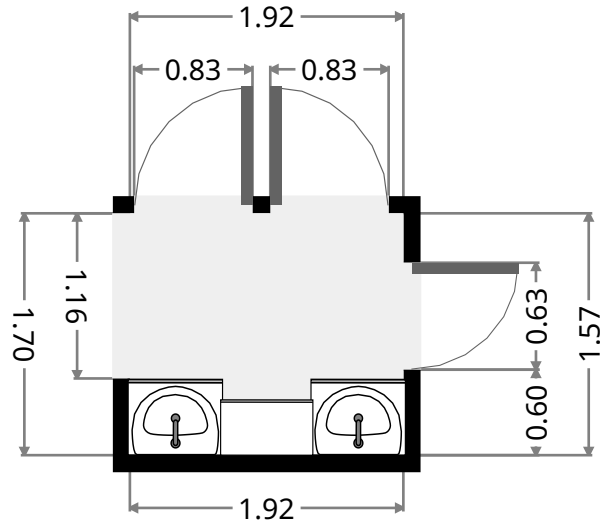
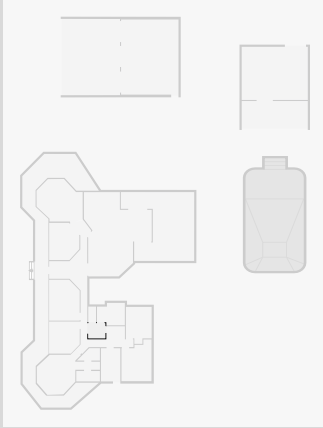
Width: 2.54 m
 Length: 3.16 m
 Area: 7.15 m²
 Perimeter: 11.38 m



THIS FLOORPLAN IS PROVIDED WITHOUT WARRANTY OF ANY KIND. SENSOPIA DISCLAIMS ANY WARRANTY INCLUDING, WITHOUT LIMITATION, SATISFACTORY QUALITY OR ACCURACY OF DIMENSIONS.

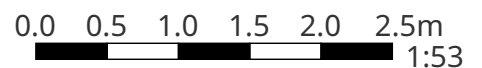
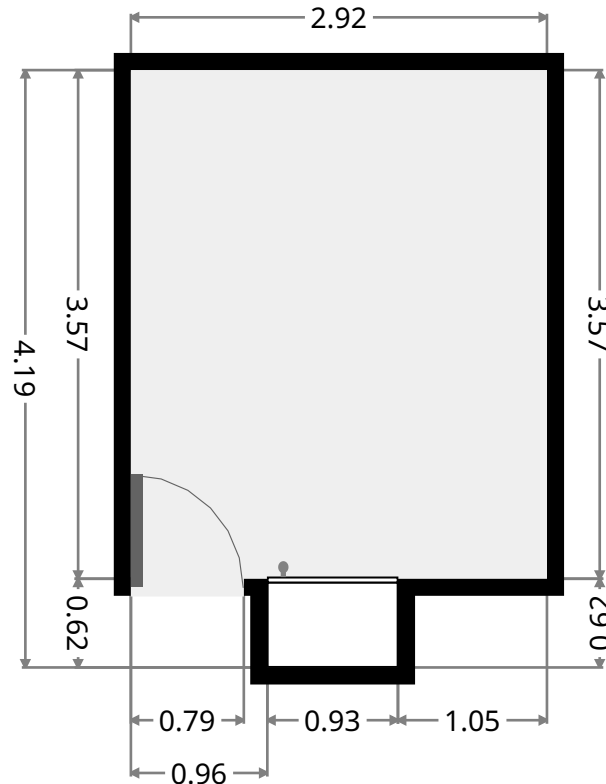
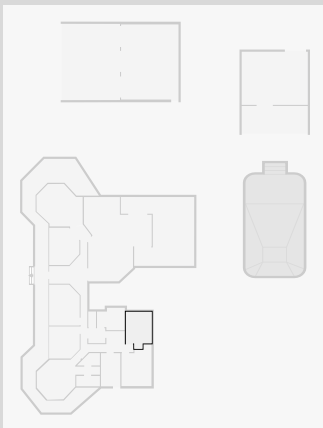
11 Constance Avenue

•
 Width: 1.70 m
 Length: 1.92 m
 Area: 3.25 m²
 Perimeter: 7.23 m



Bedroom

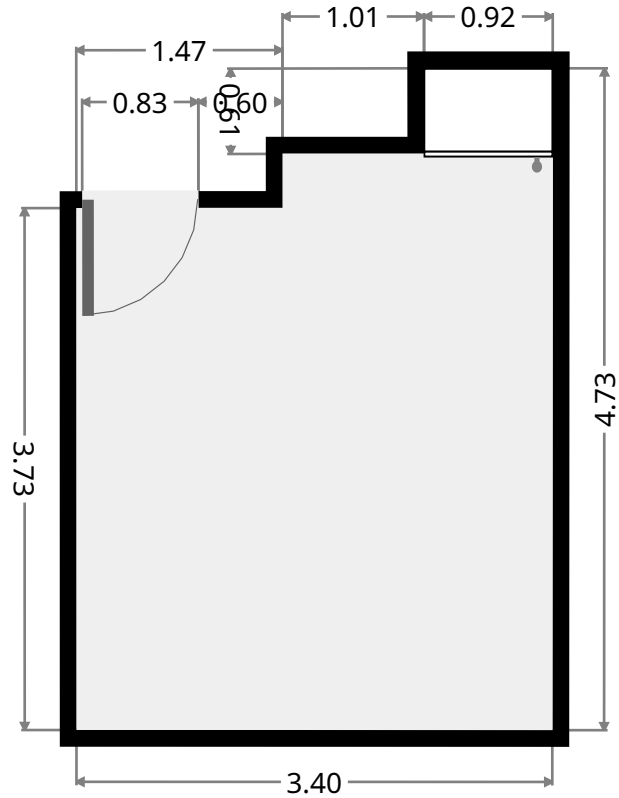
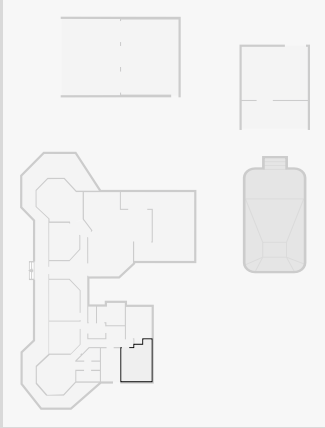
Width: 2.92 m
 Length: 4.19 m
 Area: 10.98 m²
 Perimeter: 14.21 m



11 Constance Avenue

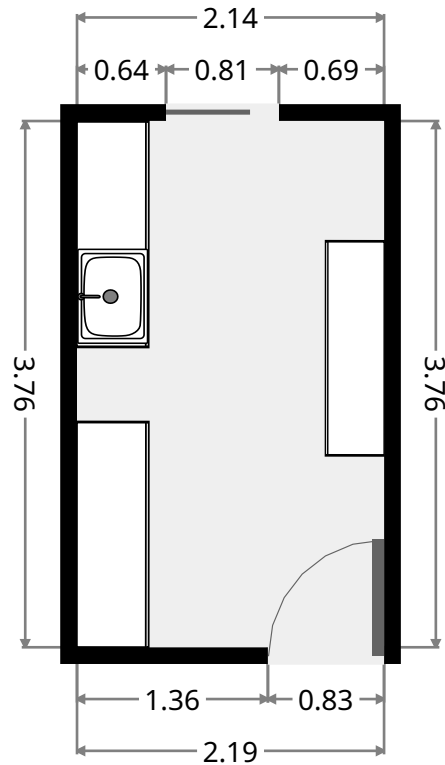
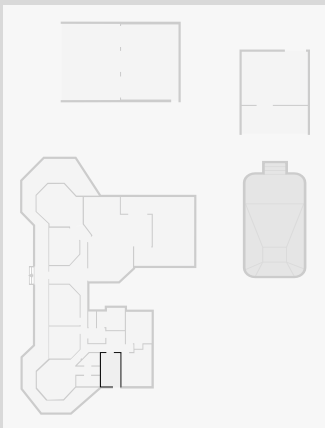
Bedroom

Width: 3.40 m
 Length: 4.73 m
 Area: 14.00 m²
 Perimeter: 16.26 m

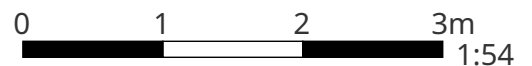


Laundry Room

Width: 2.19 m
 Length: 3.76 m
 Area: 8.25 m²
 Perimeter: 11.91 m



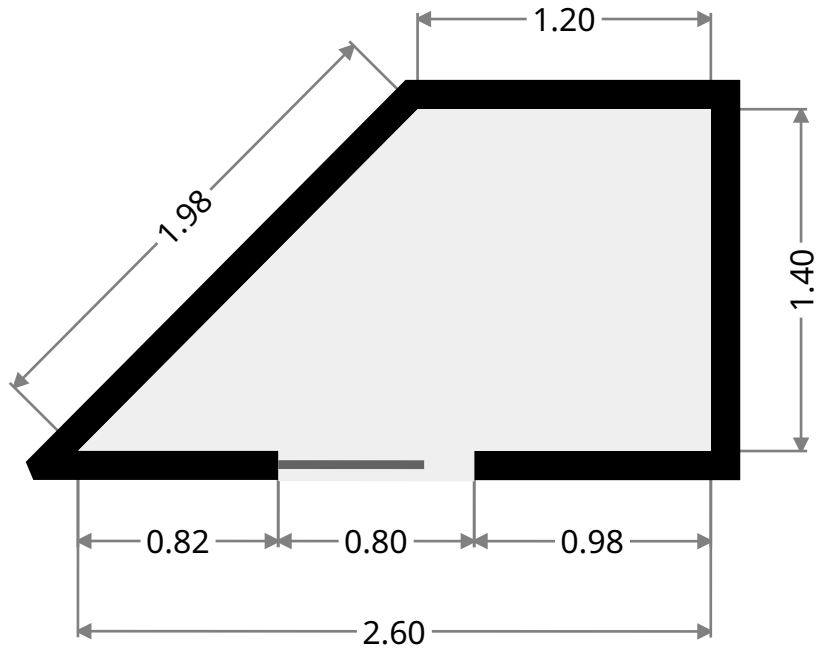
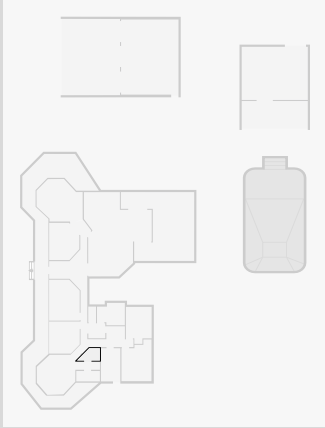
THIS FLOORPLAN IS PROVIDED WITHOUT WARRANTY OF ANY KIND. SENSOPIA DISCLAIMS ANY WARRANTY INCLUDING, WITHOUT LIMITATION, SATISFACTORY QUALITY OR ACCURACY OF DIMENSIONS.



11 Constance Avenue

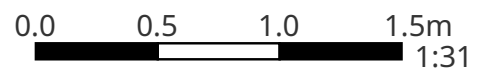
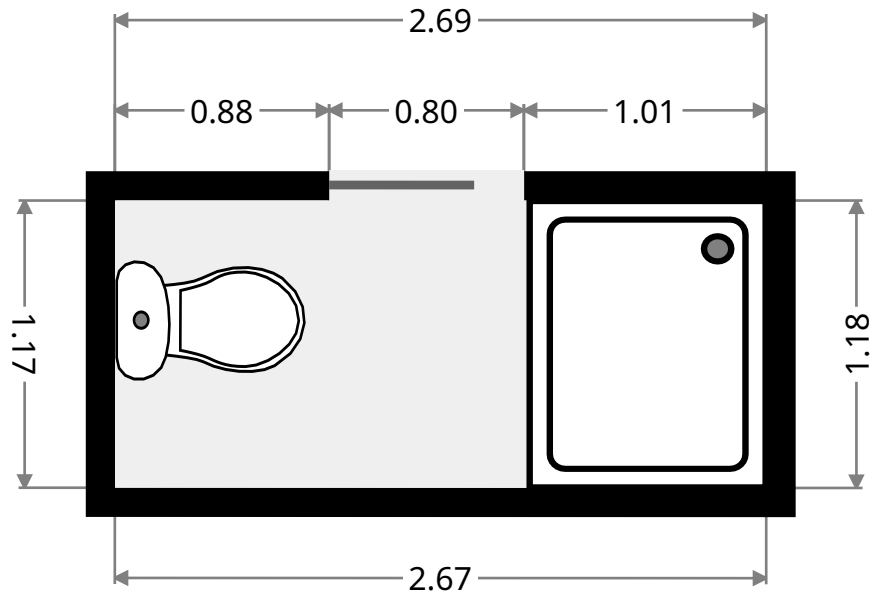
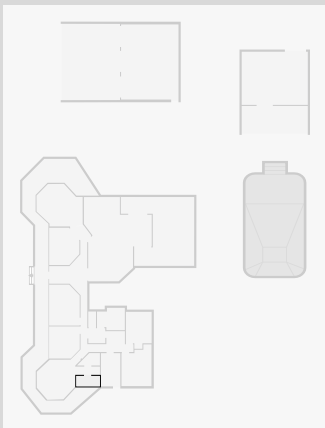
WIR

Width: 1.40 m
 Length: 2.60 m
 Area: 2.66 m²
 Perimeter: 7.18 m



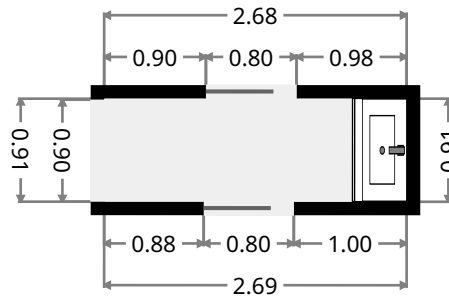
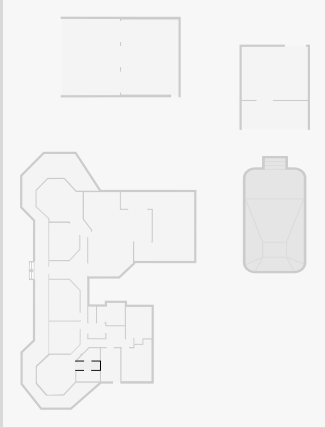
Bathroom

Width: 1.18 m
 Length: 2.67 m
 Area: 3.15 m²
 Perimeter: 7.70 m



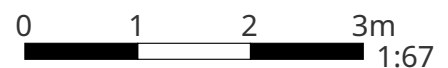
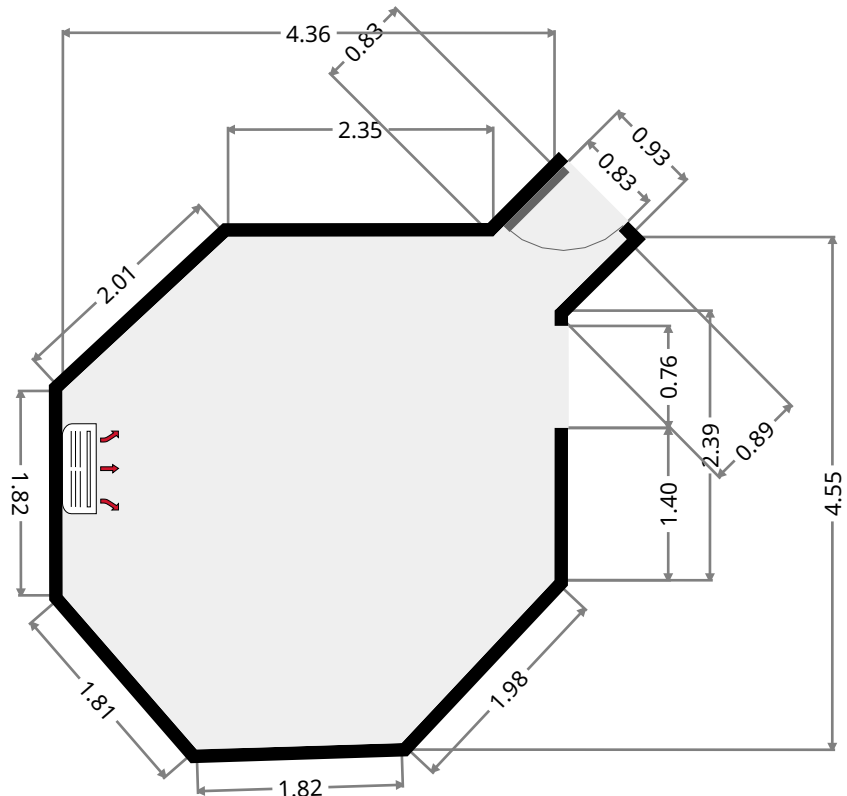
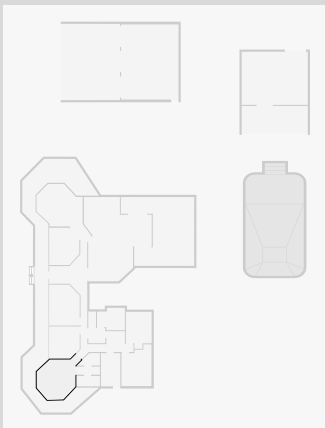
11 Constance Avenue

•
 Width: 0.91 m
 Length: 2.69 m
 Area: 2.45 m²
 Perimeter: 7.19 m



Master Bedroom

Width: 4.36 m
 Length: 4.55 m
 Area: 17.45 m²
 Perimeter: 16.74 m



THIS FLOORPLAN IS PROVIDED WITHOUT WARRANTY OF ANY KIND. SENSOPIA DISCLAIMS ANY WARRANTY INCLUDING, WITHOUT LIMITATION, SATISFACTORY QUALITY OR ACCURACY OF DIMENSIONS.