

11 Cecil Street

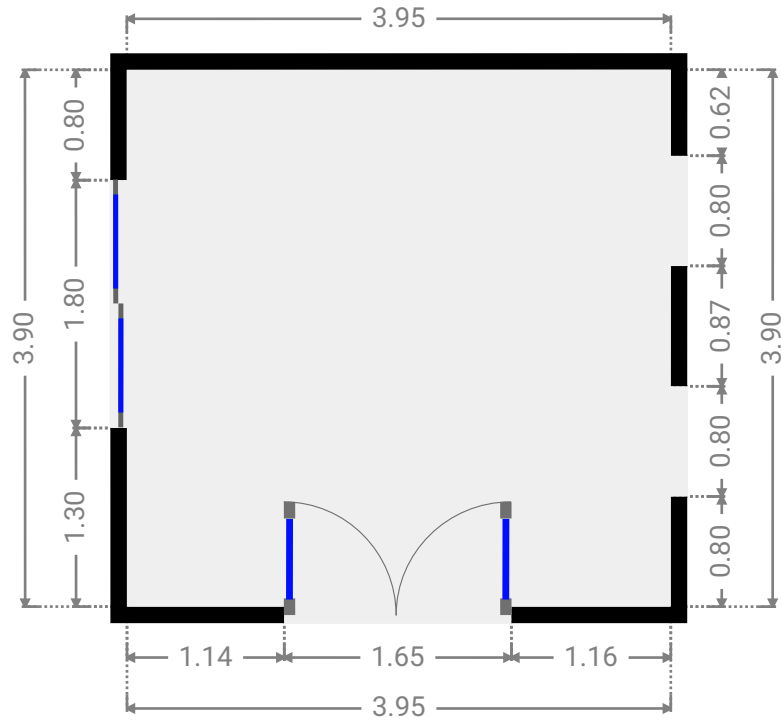
SUBMITTED BY
Ray White Rockhampton Casey
stockers@cqoz.com

CREATED ON
2022-01-24

Floors
1

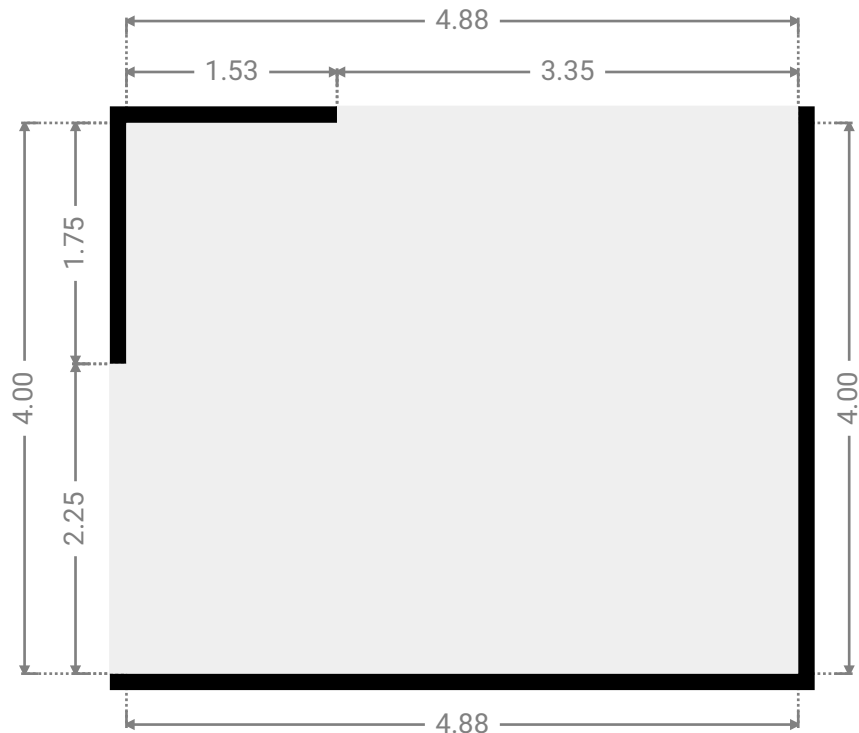
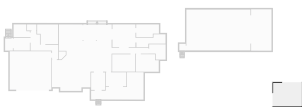
▼ Master Bedroom
Ground Floor

WIDTH: 3.95 m • LENGTH: 3.90 m
AREA: 15.41 m² • PERIMETER: 15.70 m



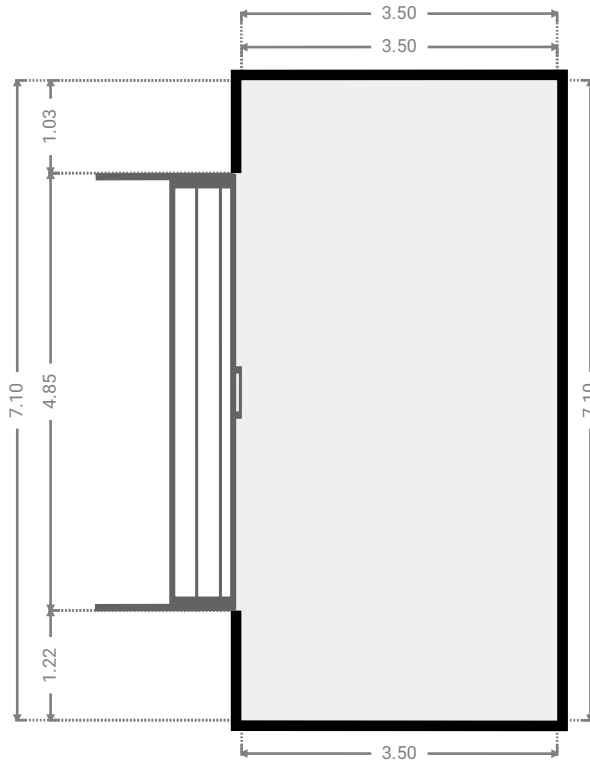
▼ Other
Ground Floor

WIDTH: 4.88 m • LENGTH: 4.00 m
AREA: 19.52 m² • PERIMETER: 17.76 m



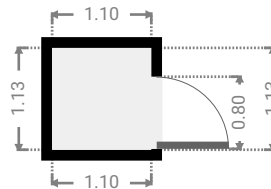
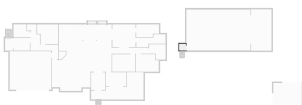
▼ Other
Ground Floor

WIDTH: 3.50 m • LENGTH: 7.10 m
AREA: 24.84 m² • PERIMETER: 21.20 m



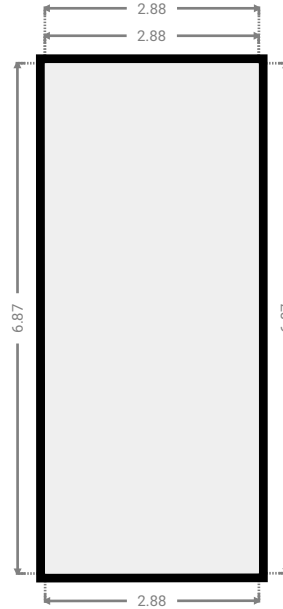
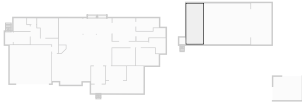
▼ Other
Ground Floor

WIDTH: 1.10 m • LENGTH: 1.13 m
AREA: 1.24 m² • PERIMETER: 4.46 m



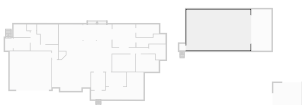
▼ Other Ground Floor

WIDTH: 2.88 m • LENGTH: 6.87 m
AREA: 19.79 m² • PERIMETER: 19.50 m



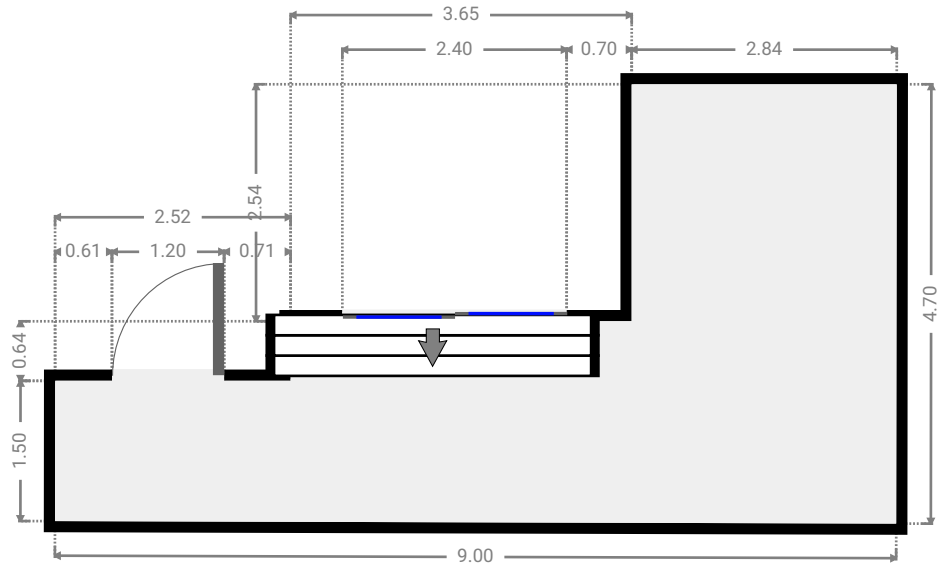
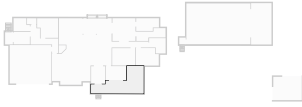
▼ Garage Ground Floor

WIDTH: 11.00 m • LENGTH: 7.00 m
AREA: 77.00 m² • PERIMETER: 36.00 m



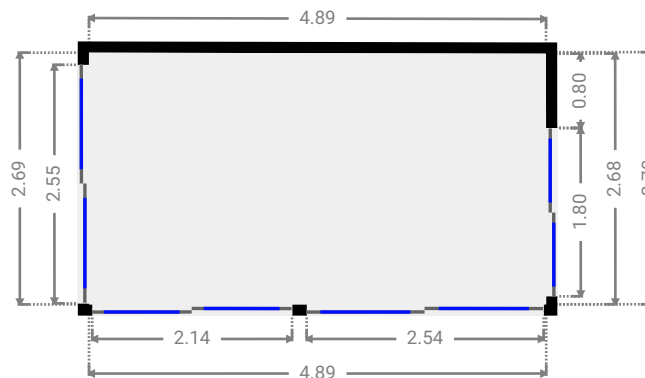
▼ Other Ground Floor

WIDTH: 9.00 m • LENGTH: 4.70 m
AREA: 24.94 m² • PERIMETER: 27.38 m



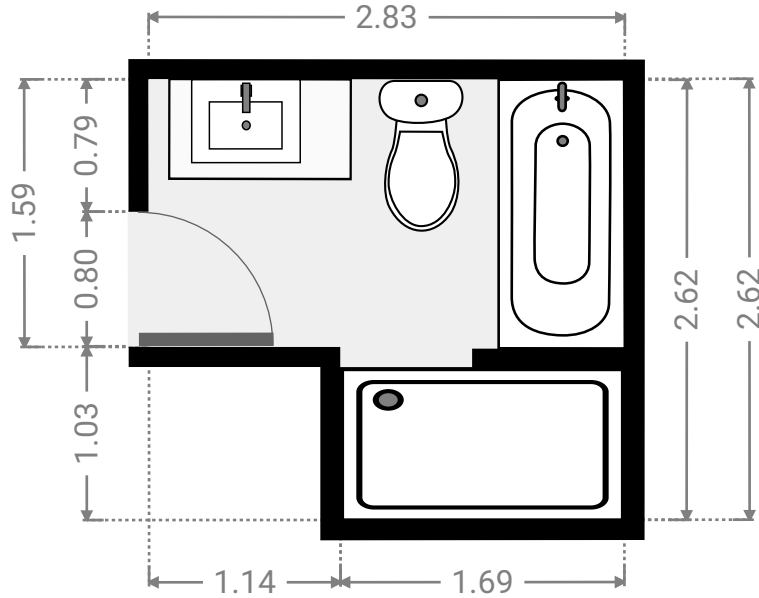
▼ Other Ground Floor

WIDTH: 4.89 m • LENGTH: 2.70 m
AREA: 13.14 m² • PERIMETER: 15.16 m



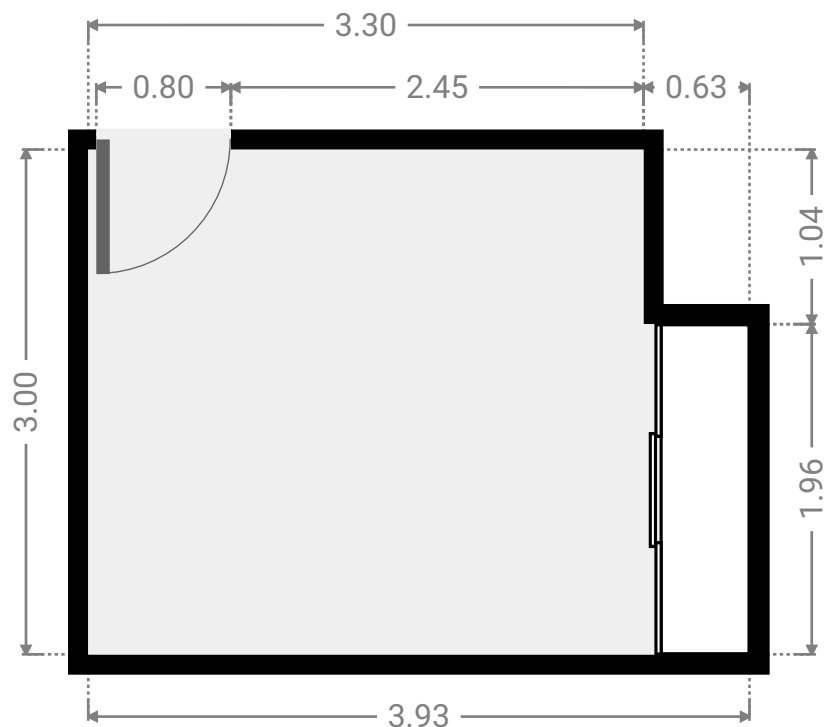
▼ **Bathroom**
Ground Floor

WIDTH: 2.83 m • LENGTH: 2.62 m
AREA: 6.23 m² • PERIMETER: 10.89 m



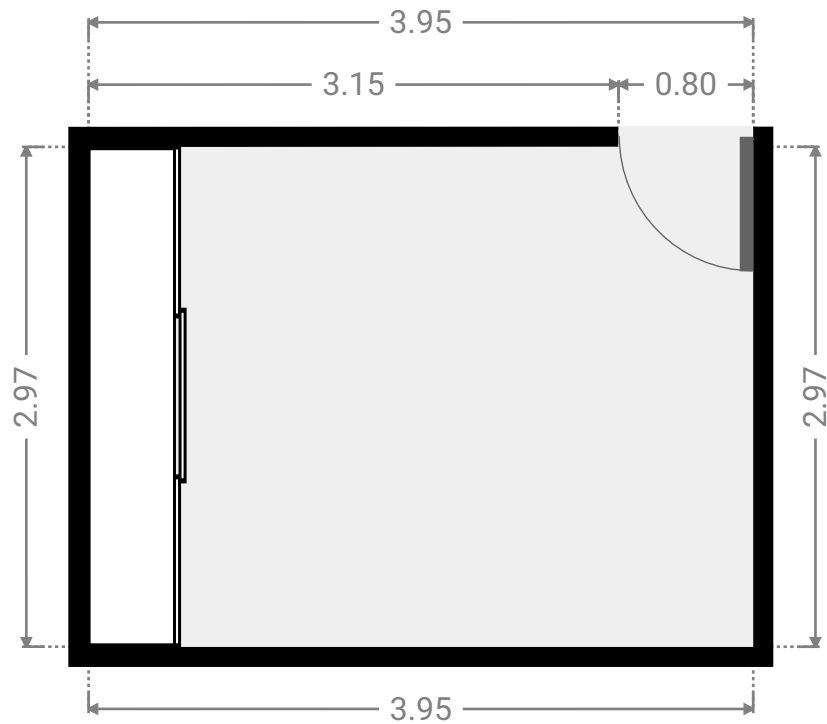
▼ **Bedroom**
Ground Floor

WIDTH: 3.93 m • LENGTH: 3.00 m
AREA: 11.14 m² • PERIMETER: 13.86 m



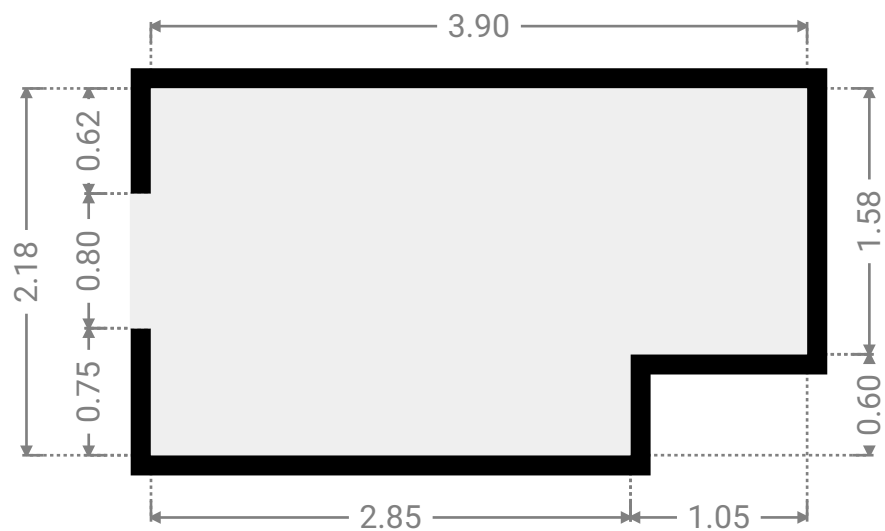
▼ **Bedroom**
Ground Floor

WIDTH: 3.95 m • LENGTH: 2.97 m
AREA: 11.73 m² • PERIMETER: 13.84 m



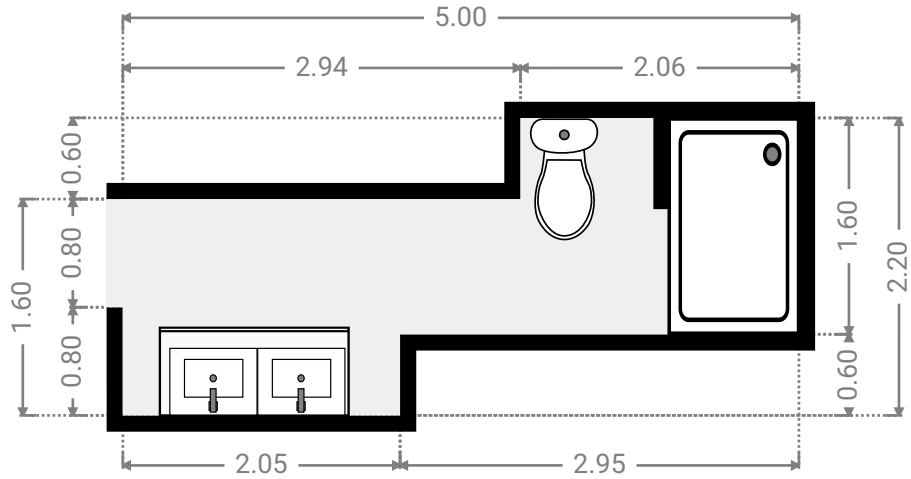
▼ **Closet**
Ground Floor

WIDTH: 3.90 m • LENGTH: 2.18 m
AREA: 7.87 m² • PERIMETER: 12.16 m



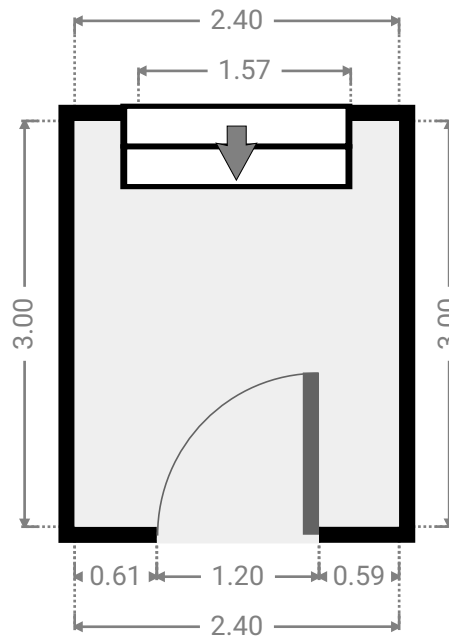
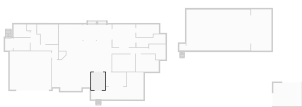
▼ **Bathroom**
Ground Floor

WIDTH: 5.00 m • LENGTH: 2.20 m
AREA: 7.46 m² • PERIMETER: 14.40 m



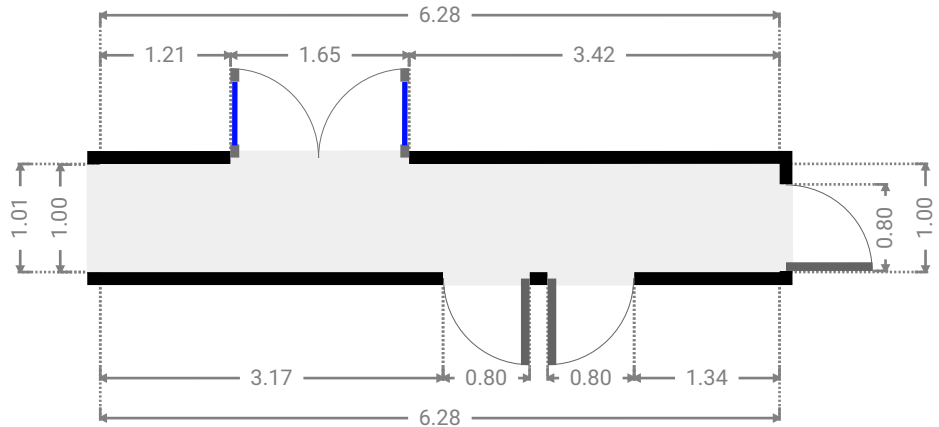
▼ **Hall**
Ground Floor

WIDTH: 2.40 m • LENGTH: 3.00 m
AREA: 7.20 m² • PERIMETER: 10.80 m



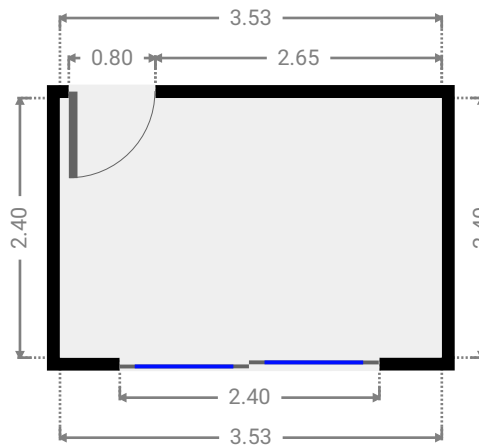
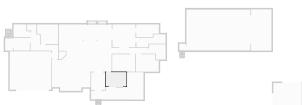
▼ **Hall**
Ground Floor

WIDTH: 6.28 m • LENGTH: 1.00 m
AREA: 6.28 m² • PERIMETER: 14.56 m



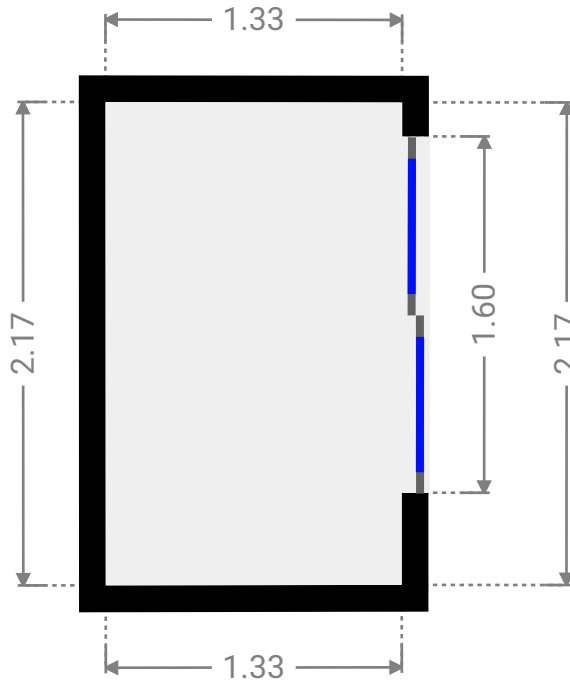
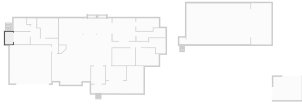
▼ **Bedroom**
Ground Floor

WIDTH: 3.53 m • LENGTH: 2.40 m
AREA: 8.47 m² • PERIMETER: 11.86 m



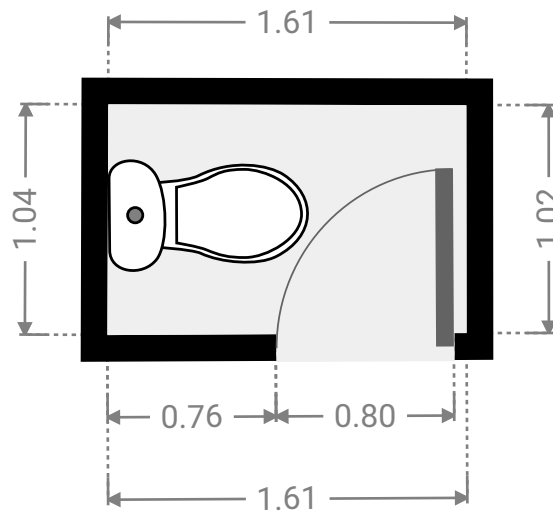
▼ **Other**
Ground Floor

WIDTH: 1.33 m • LENGTH: 2.17 m
AREA: 2.89 m² • PERIMETER: 7.00 m



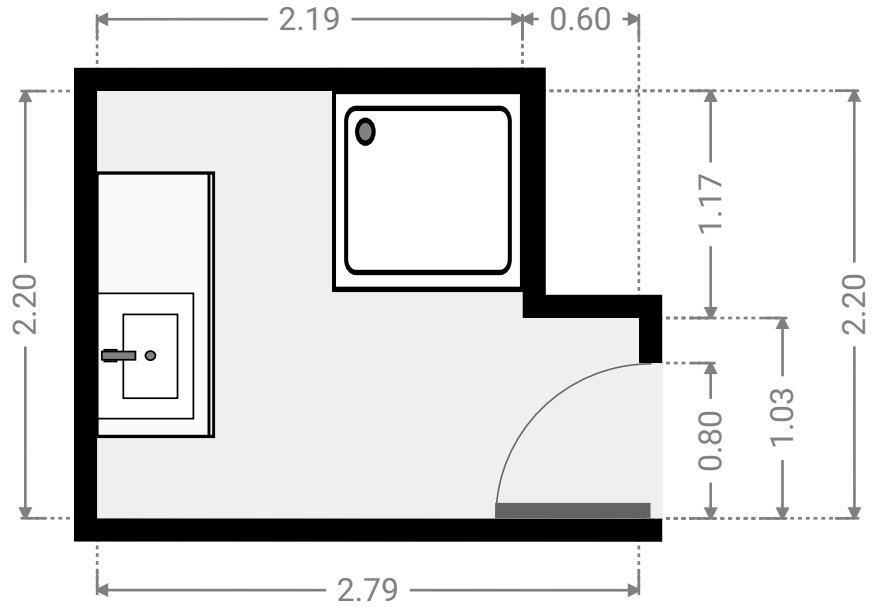
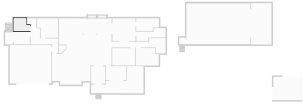
▼ **Toilet**
Ground Floor

WIDTH: 1.61 m • LENGTH: 1.04 m
AREA: 1.66 m² • PERIMETER: 5.28 m



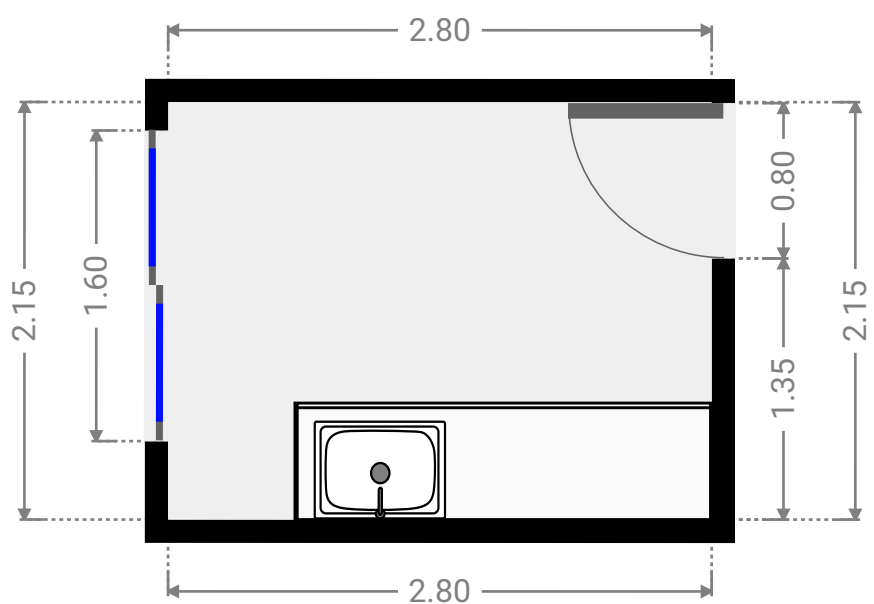
▼ **Bathroom**
Ground Floor

WIDTH: 2.79 m • LENGTH: 2.20 m
AREA: 5.44 m² • PERIMETER: 9.98 m



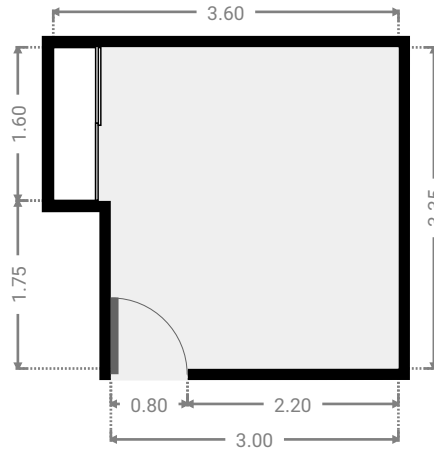
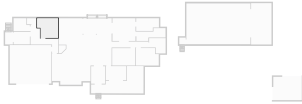
▼ **Laundry Room**
Ground Floor

WIDTH: 2.80 m • LENGTH: 2.15 m
AREA: 6.02 m² • PERIMETER: 9.90 m



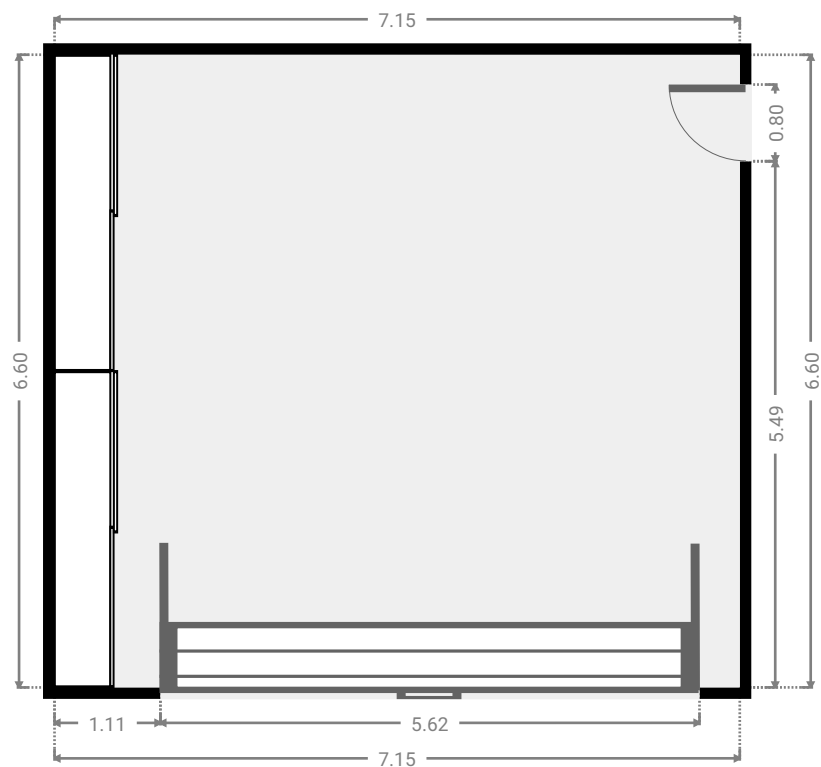
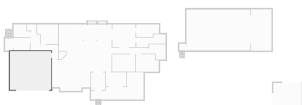
▼ Bedroom Ground Floor

WIDTH: 3.60 m • LENGTH: 3.35 m
AREA: 11.02 m² • PERIMETER: 13.90 m



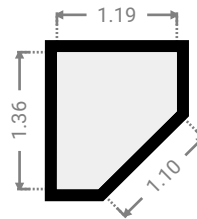
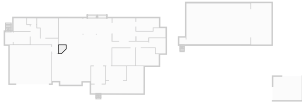
▼ Garage Ground Floor

WIDTH: 7.15 m • LENGTH: 6.60 m
AREA: 47.19 m² • PERIMETER: 27.50 m



▼ Other Ground Floor

WIDTH: 1.19 m • LENGTH: 1.36 m
AREA: 1.31 m² • PERIMETER: 4.63 m



▼ Hall Ground Floor

WIDTH: 4.75 m • LENGTH: 4.85 m
AREA: 9.80 m² • PERIMETER: 19.20 m

