

# 11 Belbowrie Avenue

**SUBMITTED BY**

Ray White Rockhampton Casey  
stockers@cqoz.com

---

**CREATED ON**

2020-12-03

---

**Floors**

1

---

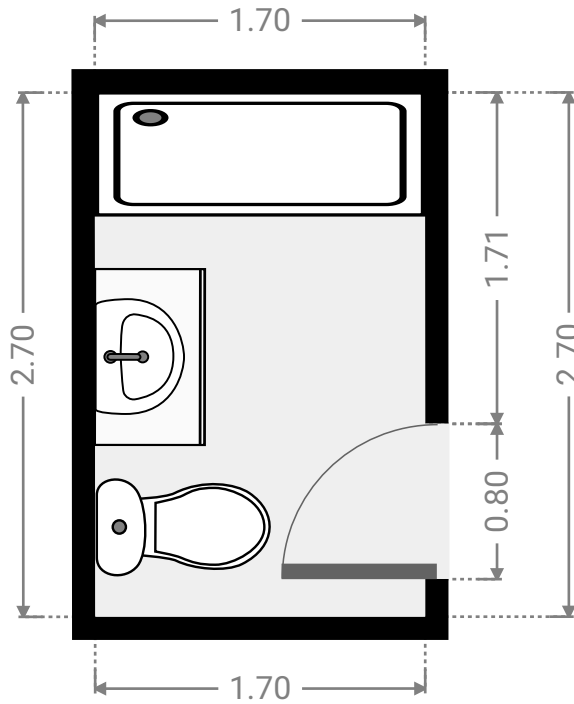
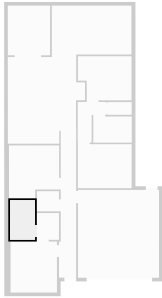
▼ Ground Floor



FLOORS: 1

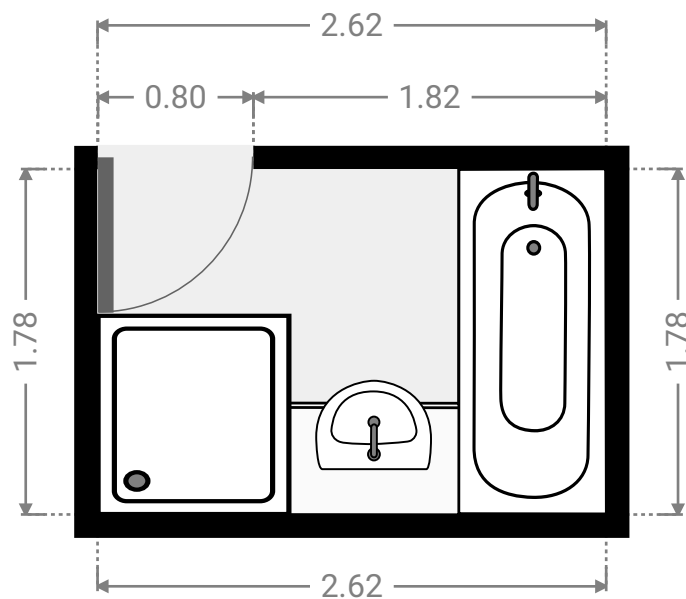
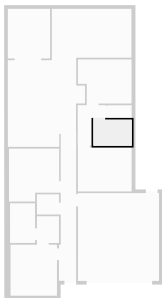
▼ **Bathroom**  
Ground Floor

WIDTH: 1.70 m • LENGTH: 2.70 m  
AREA: 4.59 m<sup>2</sup> • PERIMETER: 8.80 m



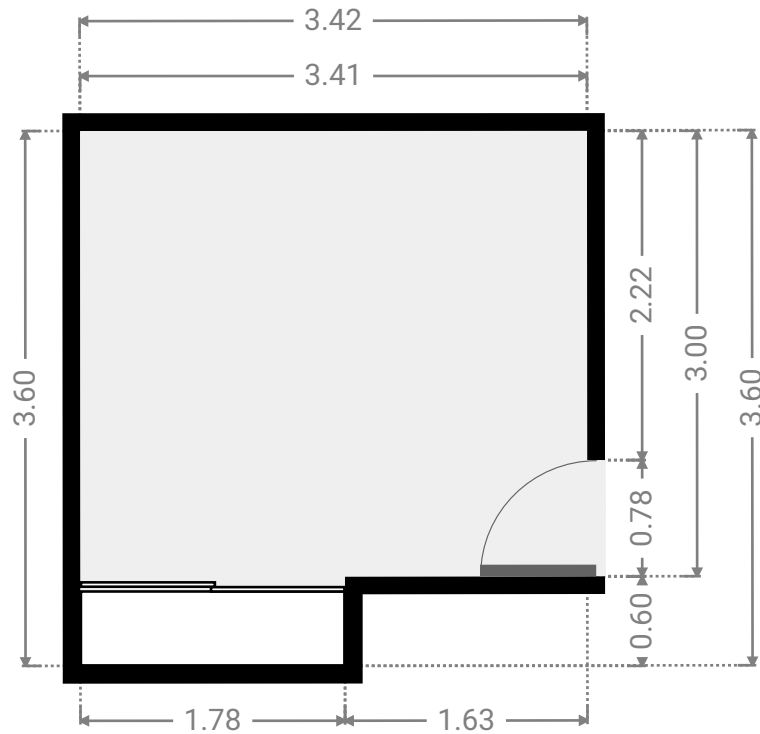
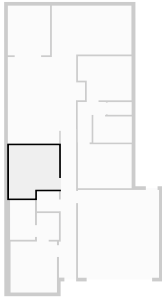
▼ **Bathroom**  
Ground Floor

WIDTH: 2.62 m • LENGTH: 1.78 m  
AREA: 4.66 m<sup>2</sup> • PERIMETER: 8.80 m



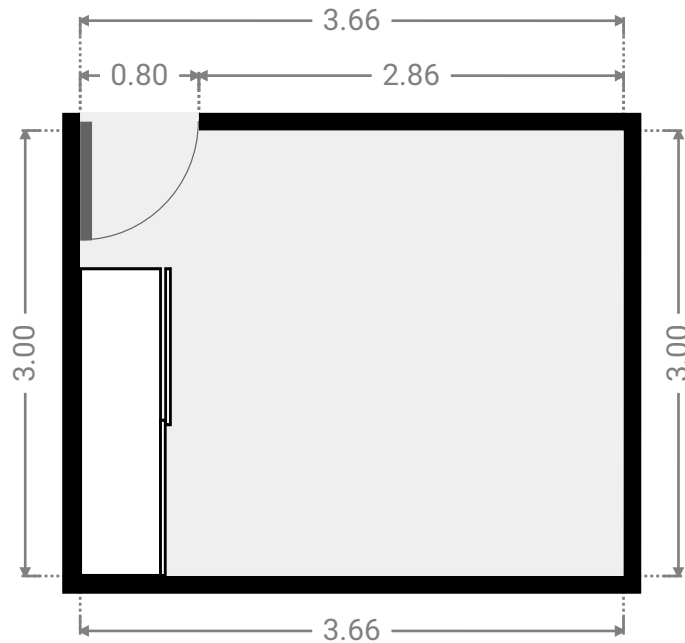
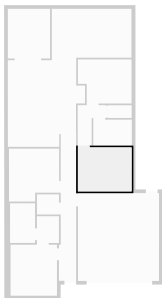
▼ **Bedroom**  
Ground Floor

WIDTH: 3.42 m • LENGTH: 3.60 m  
AREA: 11.32 m<sup>2</sup> • PERIMETER: 14.03 m



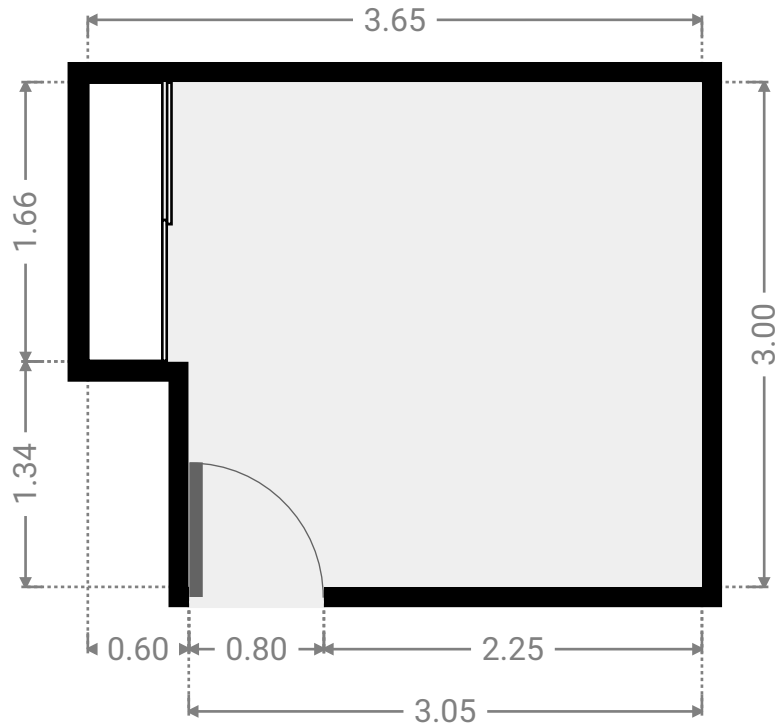
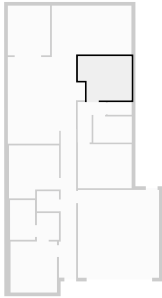
▼ **Bedroom**  
Ground Floor

WIDTH: 3.66 m • LENGTH: 3.00 m  
AREA: 10.98 m<sup>2</sup> • PERIMETER: 13.32 m



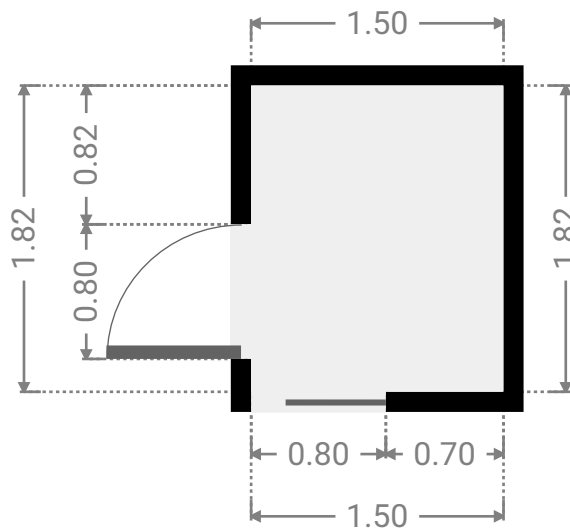
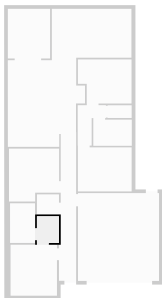
▼ **Bedroom**  
Ground Floor

WIDTH: 3.65 m • LENGTH: 3.00 m  
AREA: 10.15 m<sup>2</sup> • PERIMETER: 13.30 m



▼ **Closet**  
Ground Floor

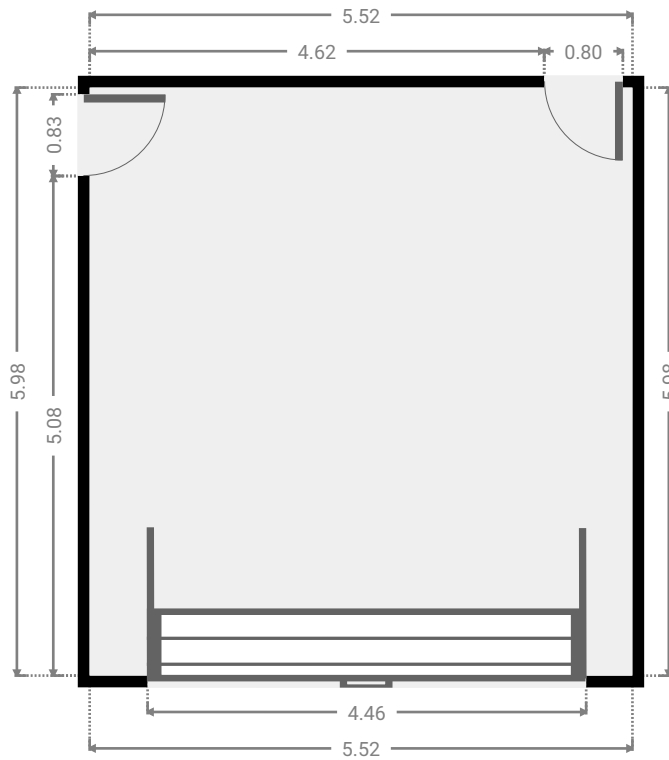
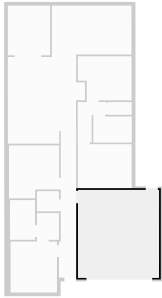
WIDTH: 1.50 m • LENGTH: 1.82 m  
AREA: 2.73 m<sup>2</sup> • PERIMETER: 6.64 m



FLOORS: 1

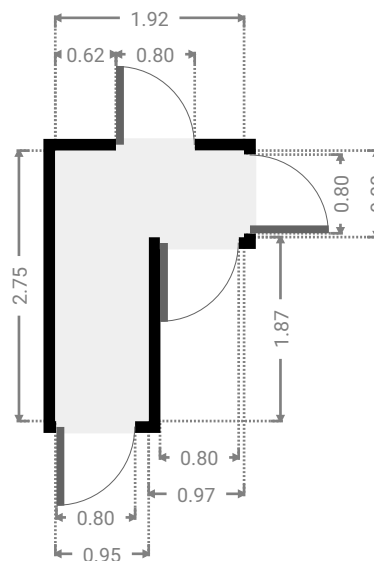
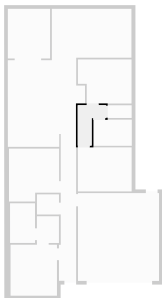
▼ Garage  
Ground Floor

WIDTH: 5.52 m • LENGTH: 5.98 m  
AREA: 33.01 m<sup>2</sup> • PERIMETER: 23.00 m



▼ Hall  
Ground Floor

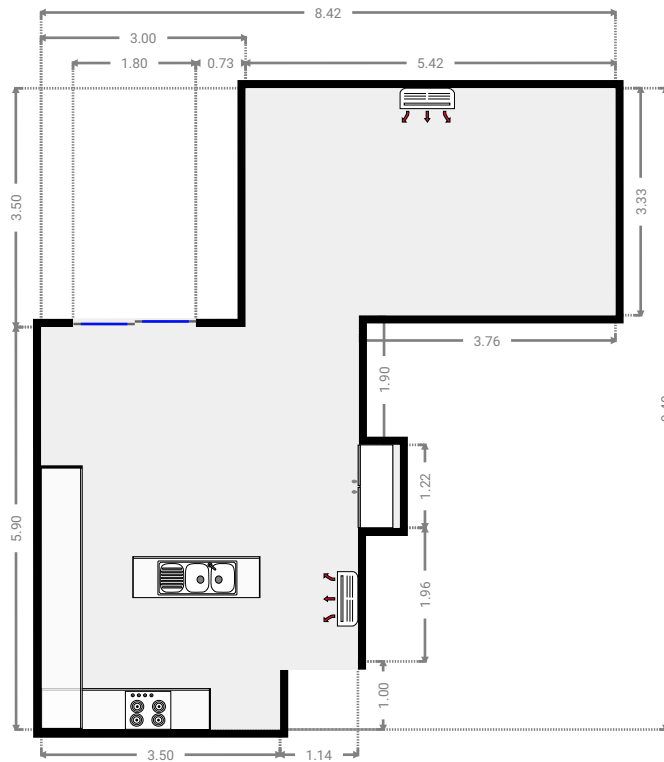
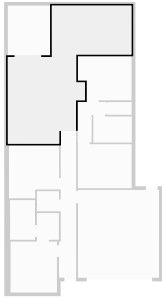
WIDTH: 1.92 m • LENGTH: 2.75 m  
AREA: 3.46 m<sup>2</sup> • PERIMETER: 9.34 m



FLOORS: 1

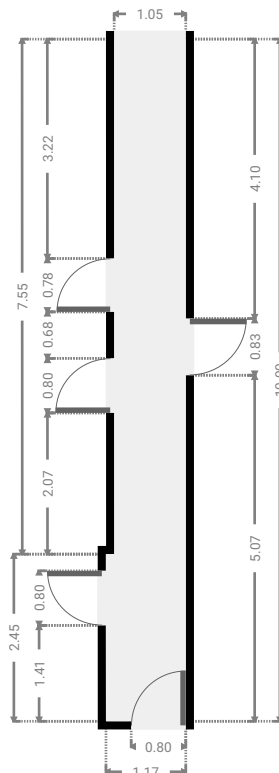
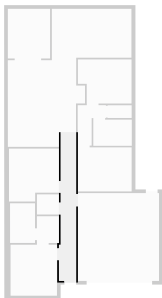
▼ Kitchen  
Ground Floor

WIDTH: 8.42 m • LENGTH: 9.40 m  
AREA: 45.35 m<sup>2</sup> • PERIMETER: 36.84 m



▼ Other  
Ground Floor

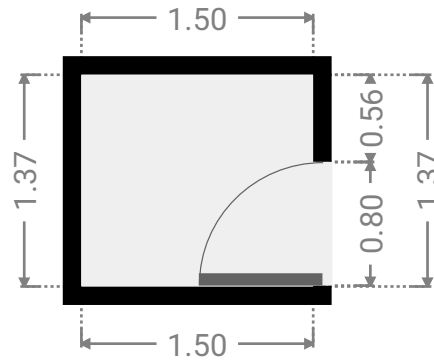
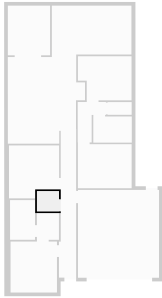
WIDTH: 1.17 m • LENGTH: 10.00 m  
AREA: 10.78 m<sup>2</sup> • PERIMETER: 22.34 m



FLOORS: 1

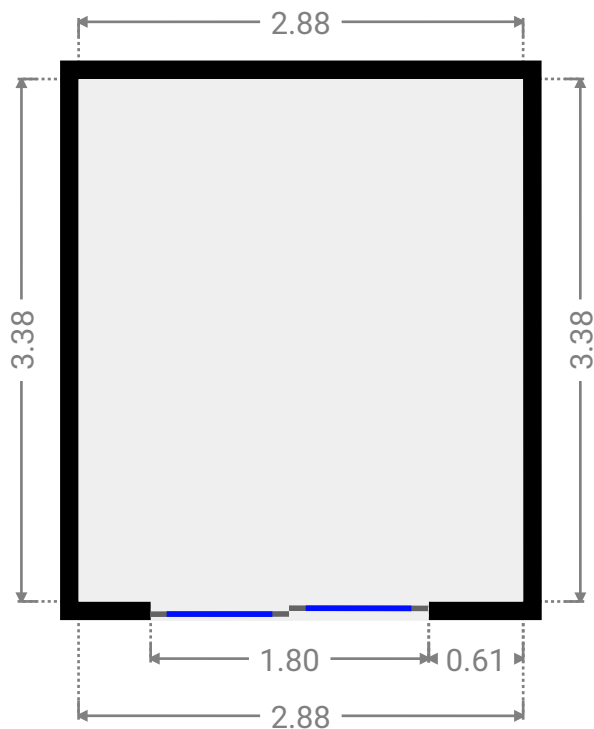
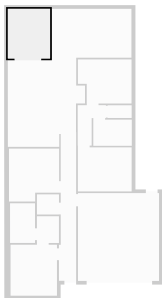
▼ **Closet**  
Ground Floor

WIDTH: 1.50 m • LENGTH: 1.37 m  
AREA: 2.06 m<sup>2</sup> • PERIMETER: 5.74 m



▼ **Other**  
Ground Floor

WIDTH: 2.88 m • LENGTH: 3.38 m  
AREA: 9.73 m<sup>2</sup> • PERIMETER: 12.52 m

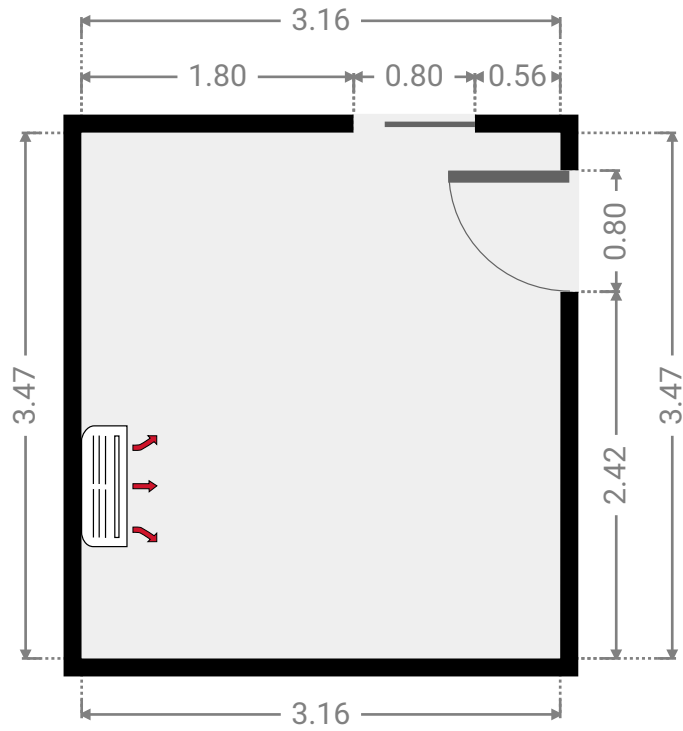
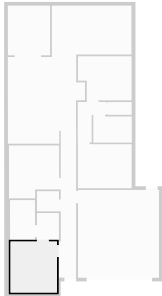




FLOORS: 1

▼ **Primary Bedroom**  
Ground Floor

WIDTH: 3.16 m • LENGTH: 3.47 m  
AREA: 10.97 m<sup>2</sup> • PERIMETER: 13.26 m



▼ **Toilet**  
Ground Floor

WIDTH: 1.64 m • LENGTH: 0.87 m  
AREA: 1.42 m<sup>2</sup> • PERIMETER: 5.00 m

