

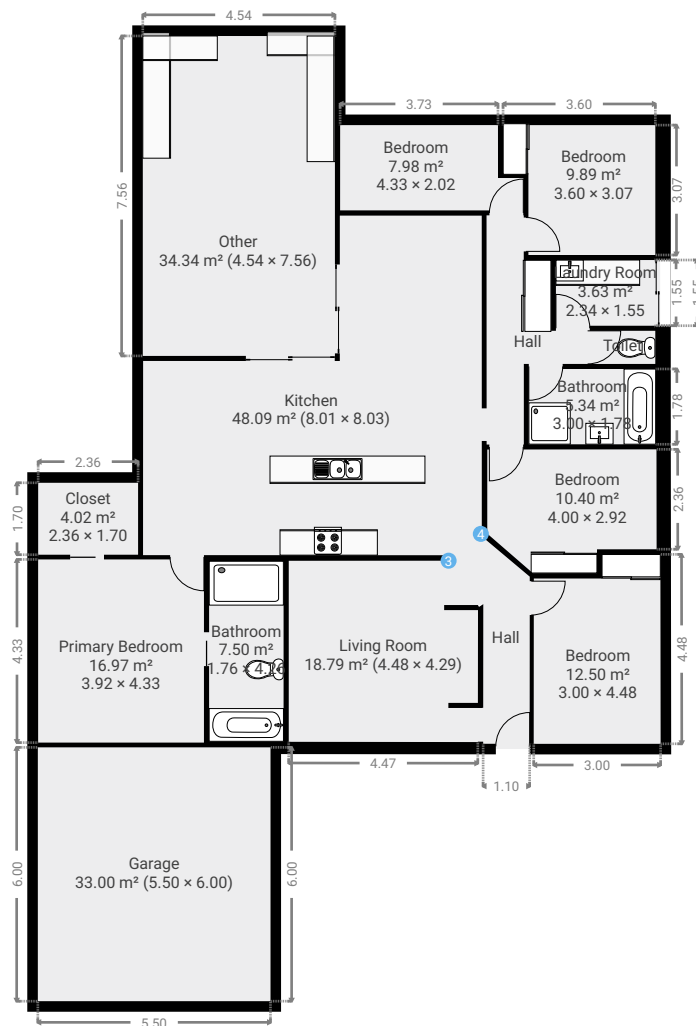
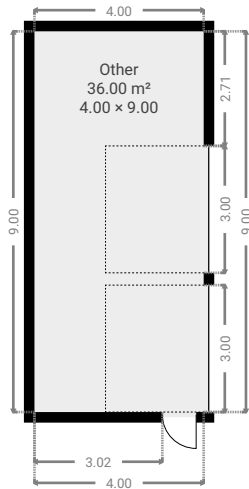
11 Barry Street

SUBMITTED BY
Ray White Rockhampton Casey
stockers@cqoz.com

CREATED ON
2022-11-16

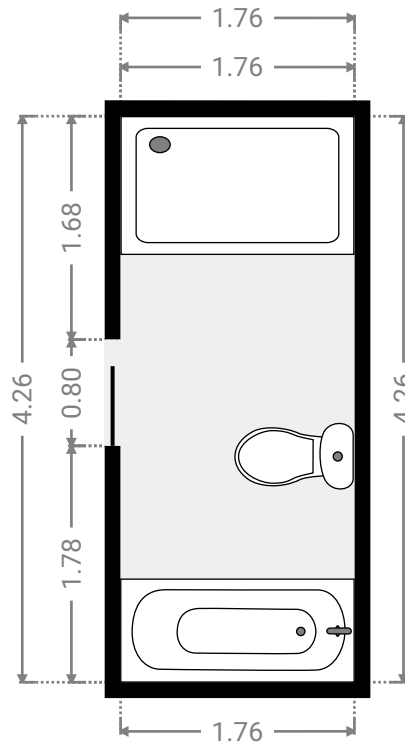
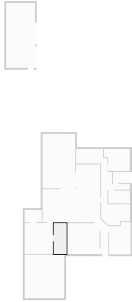
Floors
1

▼ Ground Floor



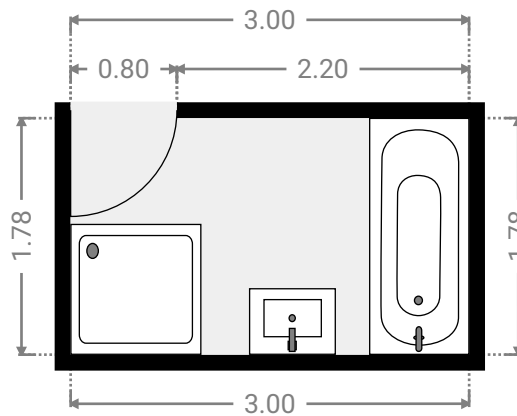
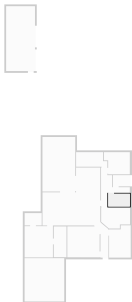
▼ **Bathroom**
Ground Floor

WIDTH: 1.76 m • LENGTH: 4.26 m
AREA: 7.50 m² • PERIMETER: 12.04 m



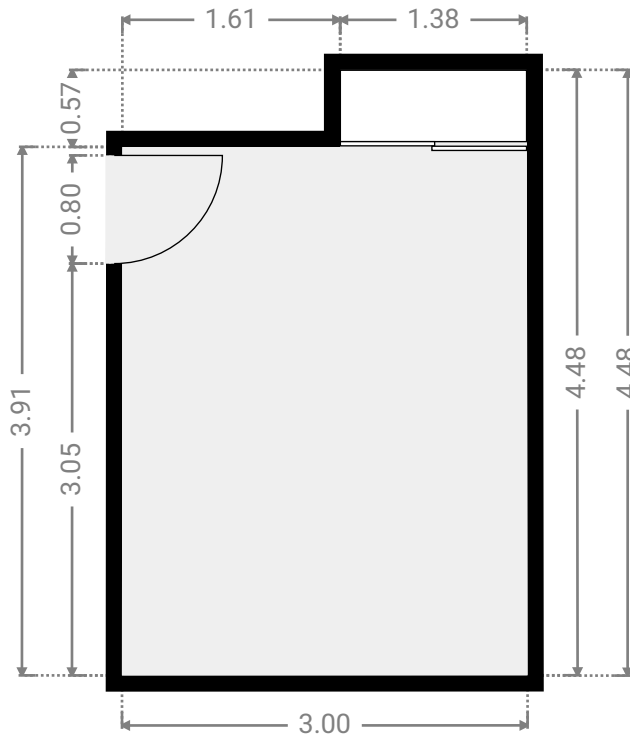
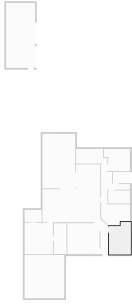
▼ **Bathroom**
Ground Floor

WIDTH: 3.00 m • LENGTH: 1.78 m
AREA: 5.34 m² • PERIMETER: 9.56 m



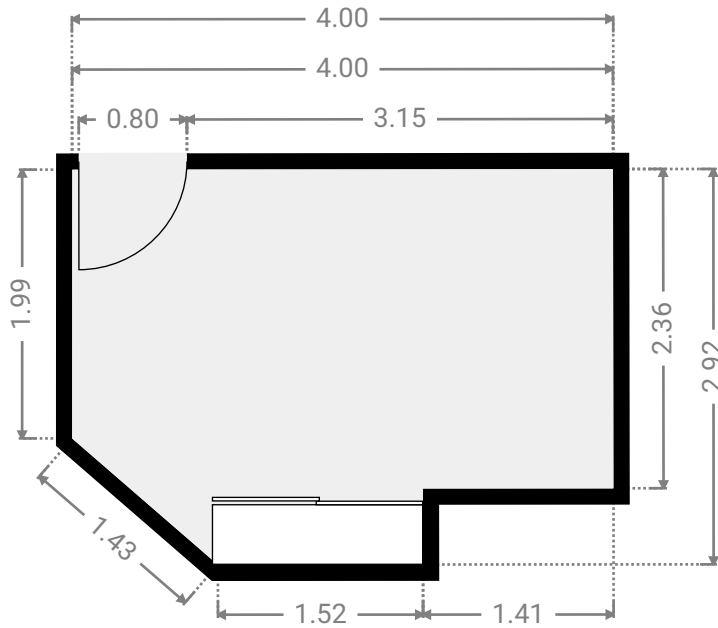
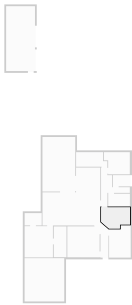
▼ **Bedroom**
Ground Floor

WIDTH: 3.00 m • LENGTH: 4.48 m
AREA: 12.50 m² • PERIMETER: 14.95 m



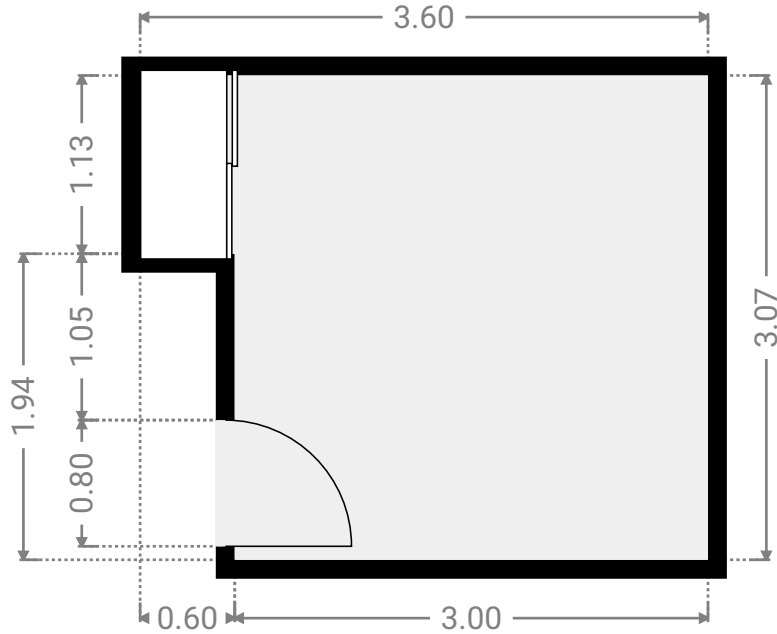
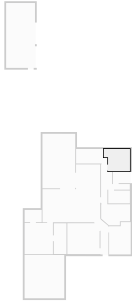
▼ **Bedroom**
Ground Floor

WIDTH: 4.00 m • LENGTH: 2.92 m
AREA: 10.40 m² • PERIMETER: 13.26 m



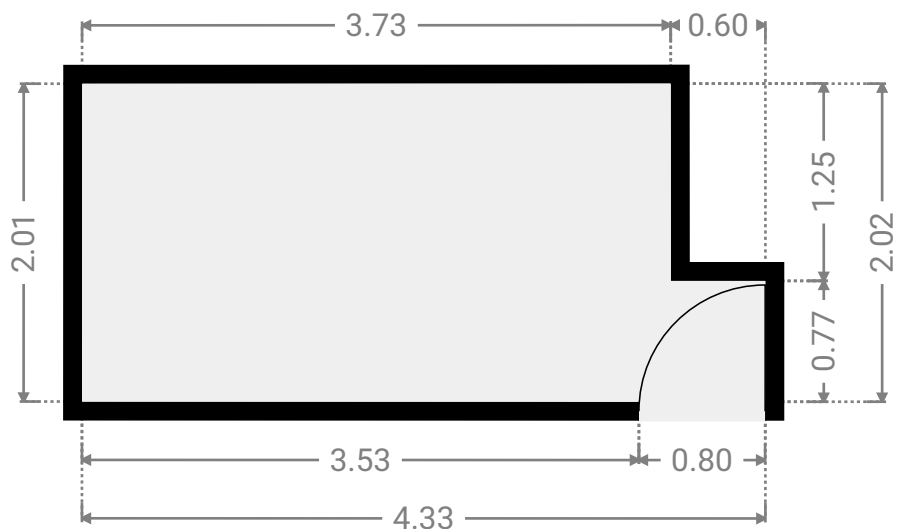
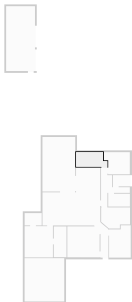
▼ **Bedroom**
Ground Floor

WIDTH: 3.60 m • LENGTH: 3.07 m
AREA: 9.89 m² • PERIMETER: 13.34 m



▼ **Bedroom**
Ground Floor

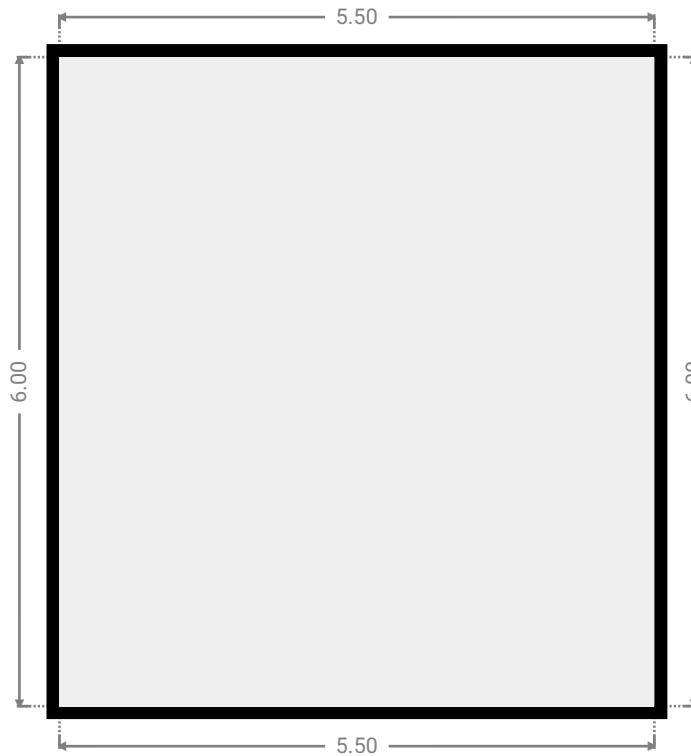
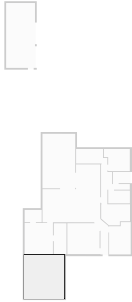
WIDTH: 4.33 m • LENGTH: 2.02 m
AREA: 7.98 m² • PERIMETER: 12.70 m



FLOORS: 1

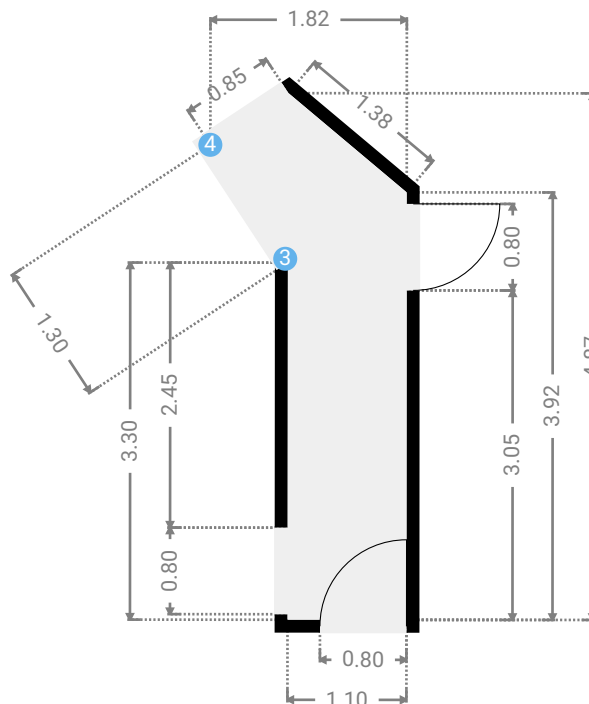
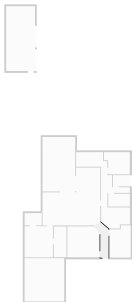
▼ Garage
Ground Floor

WIDTH: 5.50 m • LENGTH: 6.00 m
AREA: 33.00 m² • PERIMETER: 23.00 m



▼ Hall
Ground Floor

WIDTH: 1.82 m • LENGTH: 4.87 m
AREA: 5.41 m² • PERIMETER: 11.95 m



▼ Kitchen/Ground Floor

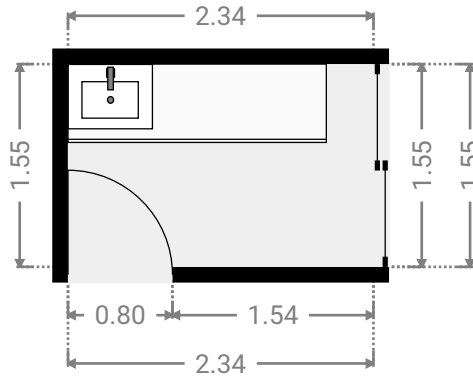
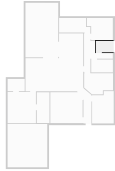
4 OPENING

Height
0.00 m



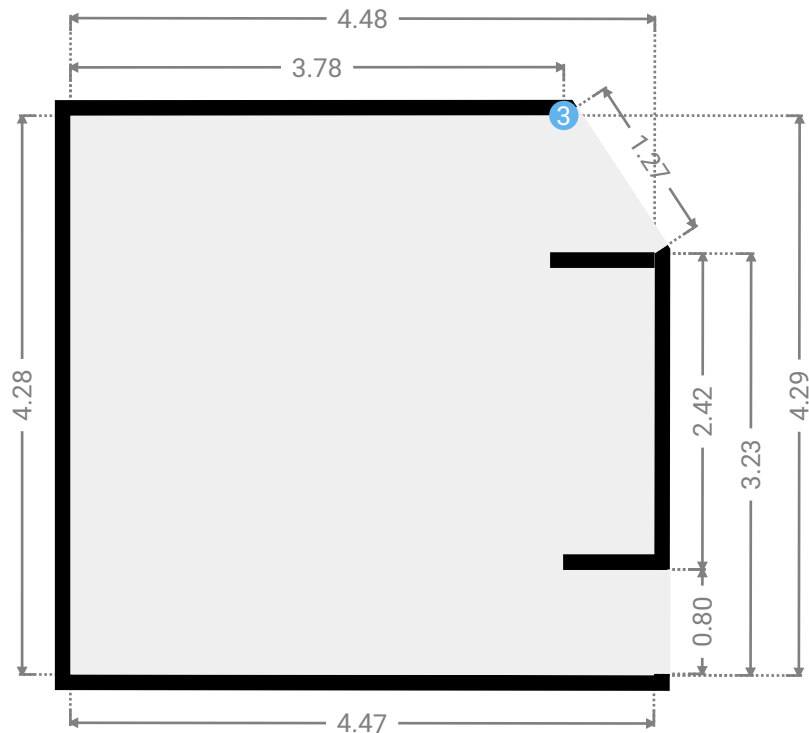
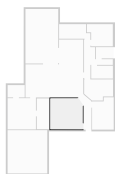
▼ Laundry Room
Ground Floor

WIDTH: 2.34 m • LENGTH: 1.55 m
AREA: 3.63 m² • PERIMETER: 7.79 m



▼ Living Room
Ground Floor

WIDTH: 4.48 m • LENGTH: 4.29 m
AREA: 18.79 m² • PERIMETER: 17.03 m



▼ Living Room/Ground Floor

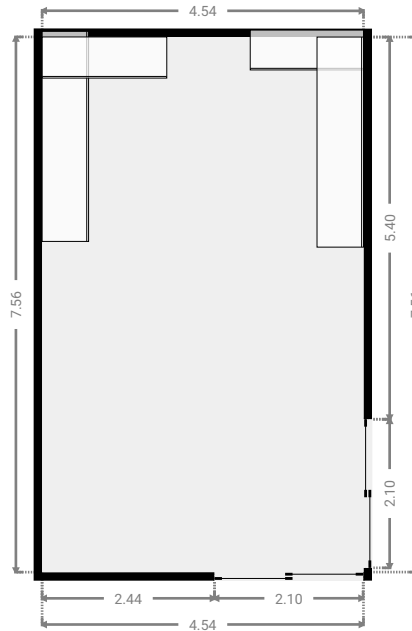
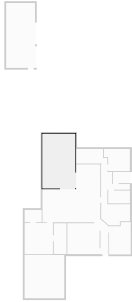
3 OPENING

Height
0.00 m



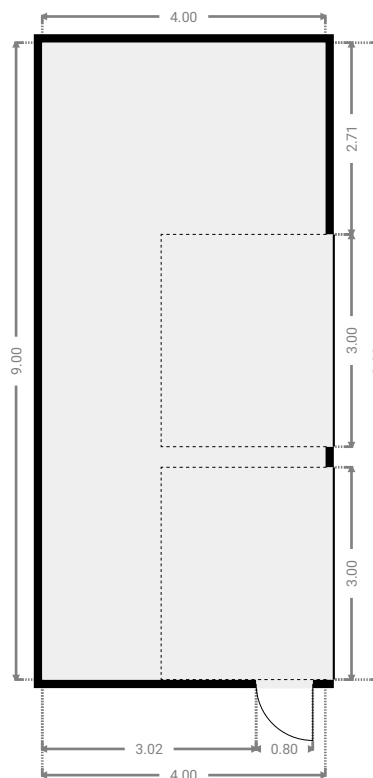
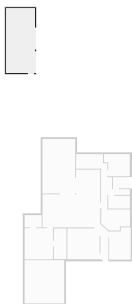
▼ Other Ground Floor

WIDTH: 4.54 m • LENGTH: 7.56 m
AREA: 34.34 m² • PERIMETER: 24.21 m



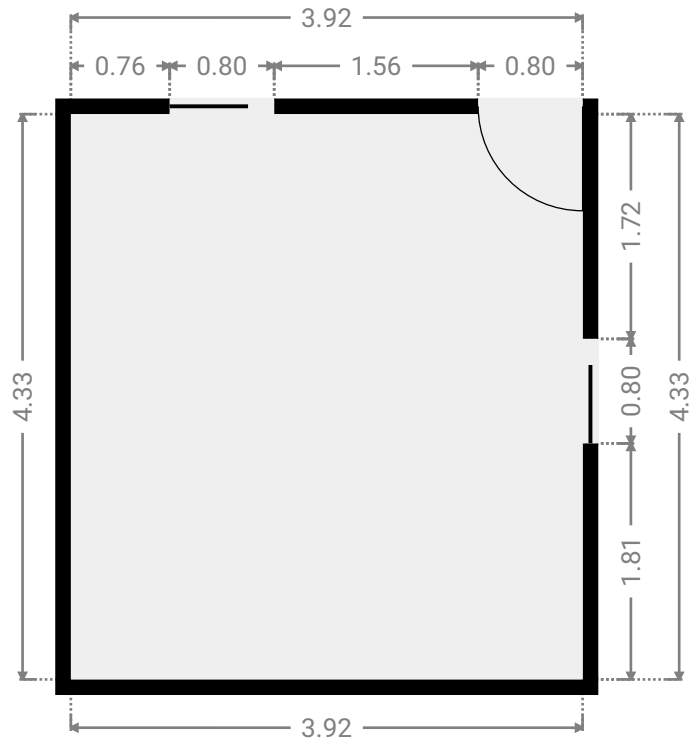
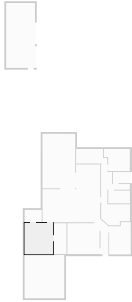
▼ Other Ground Floor

WIDTH: 4.00 m • LENGTH: 9.00 m
AREA: 36.00 m² • PERIMETER: 26.00 m



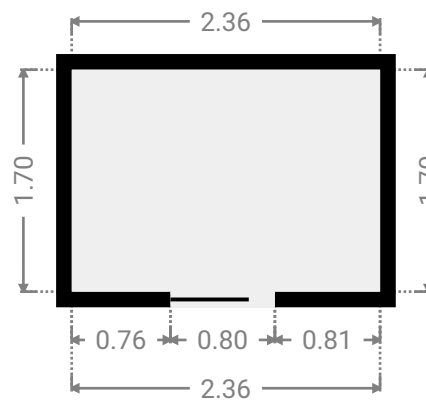
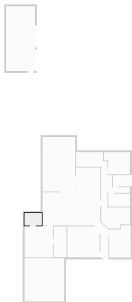
▼ **Primary Bedroom**
Ground Floor

WIDTH: 3.92 m • LENGTH: 4.33 m
AREA: 16.97 m² • PERIMETER: 16.50 m



▼ **Closet**
Ground Floor

WIDTH: 2.36 m • LENGTH: 1.70 m
AREA: 4.02 m² • PERIMETER: 8.12 m



▼ Toilet
Ground Floor

WIDTH: 1.54 m • LENGTH: 0.78 m
AREA: 1.21 m² • PERIMETER: 4.65 m

