

# 109 Nobbs Street

**SUBMITTED BY**

Ray White Rockhampton Casey  
stockers@cqoz.com

---

**CREATED ON**

2021-12-15

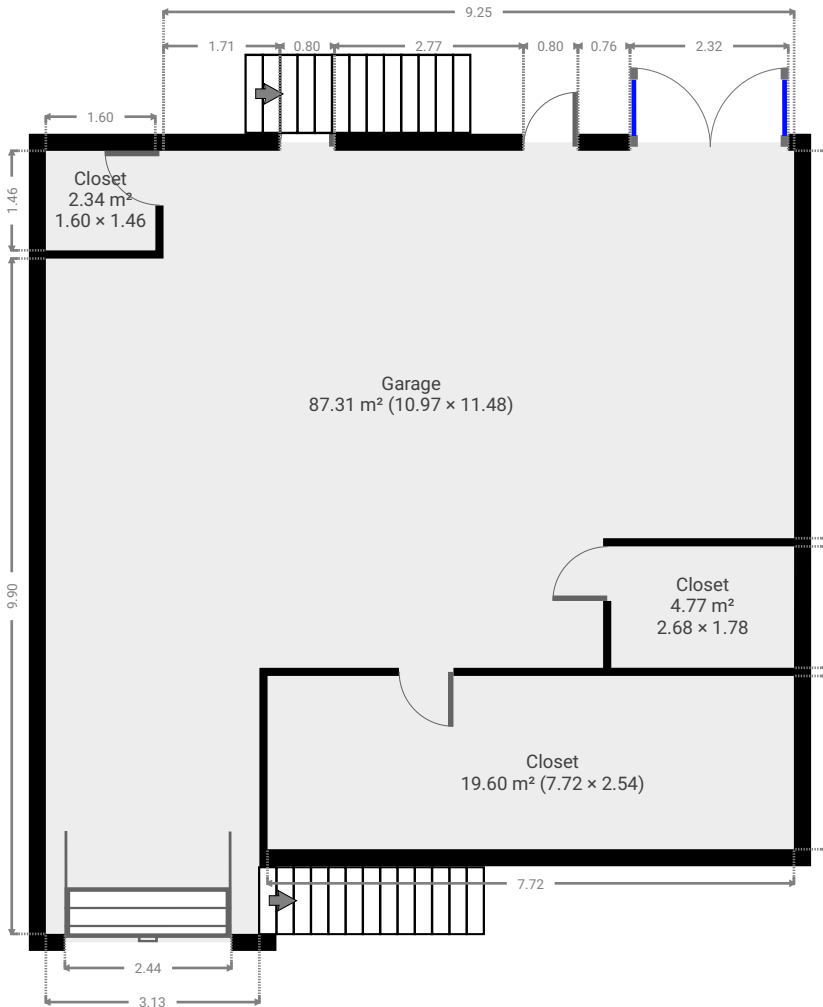
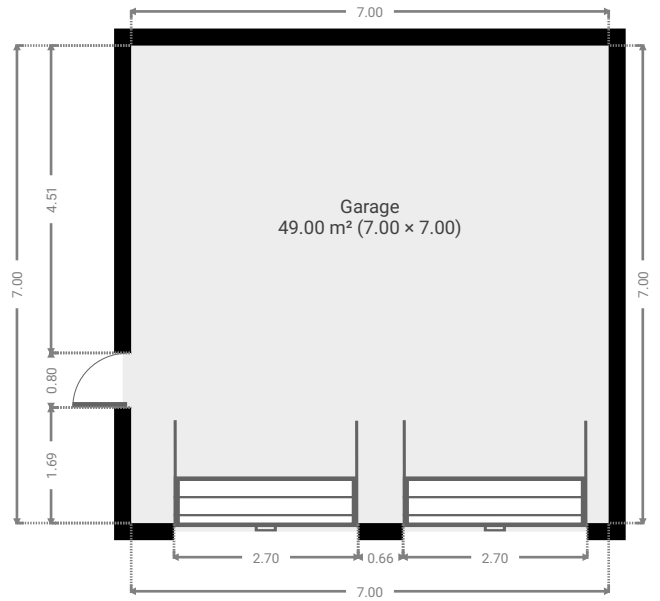
---

**Floors**

2

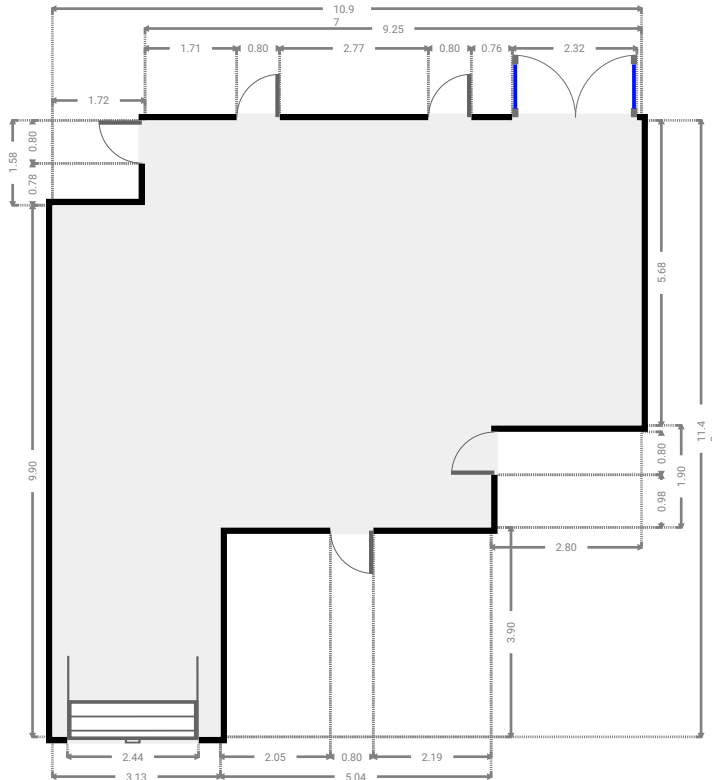
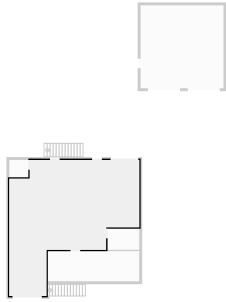
---

▼ Ground Floor



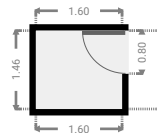
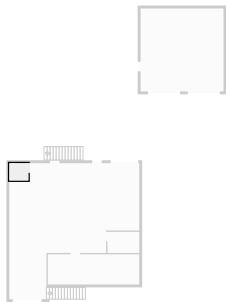
▼ Garage  
Ground Floor

WIDTH: 10.97 m • LENGTH: 11.48 m  
AREA: 87.31 m<sup>2</sup> • PERIMETER: 44.90 m



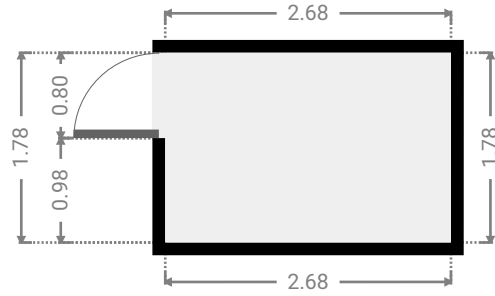
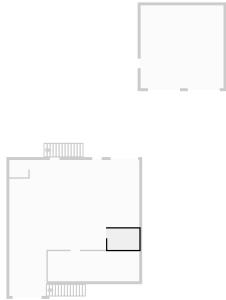
▼ Closet  
Ground Floor

WIDTH: 1.61 m • LENGTH: 1.46 m  
AREA: 2.34 m<sup>2</sup> • PERIMETER: 6.13 m



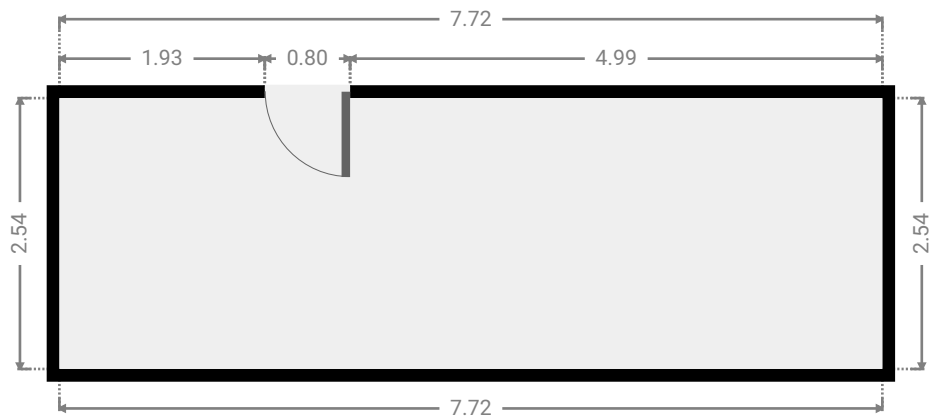
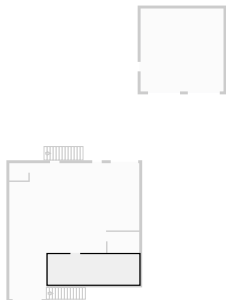
▼ **Closet**  
Ground Floor

WIDTH: 2.68 m • LENGTH: 1.78 m  
AREA: 4.77 m<sup>2</sup> • PERIMETER: 8.92 m



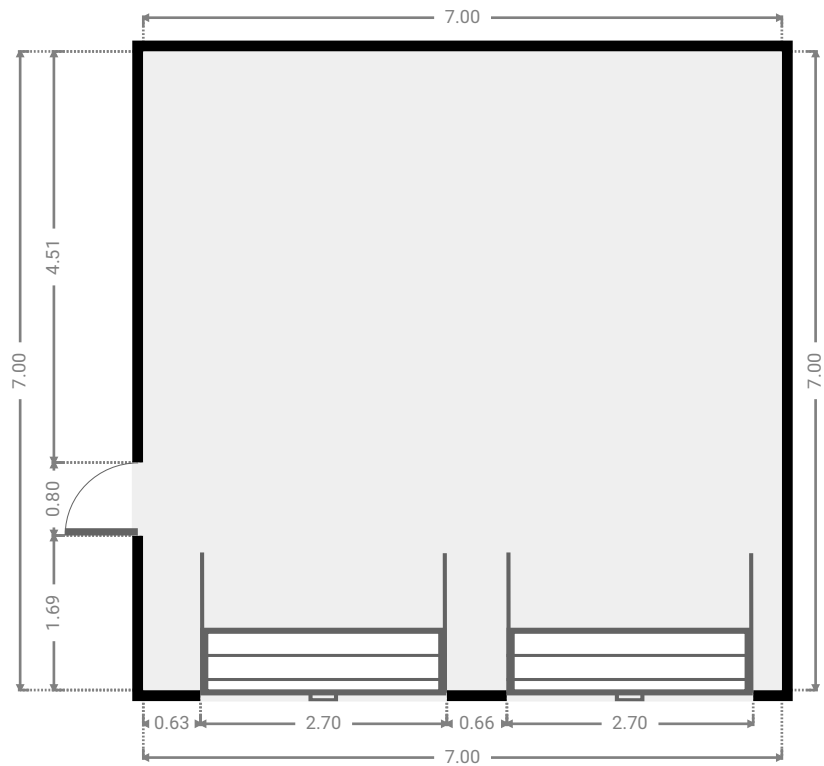
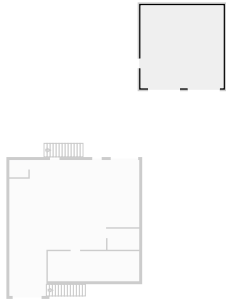
▼ **Closet**  
Ground Floor

WIDTH: 7.72 m • LENGTH: 2.54 m  
AREA: 19.60 m<sup>2</sup> • PERIMETER: 20.51 m

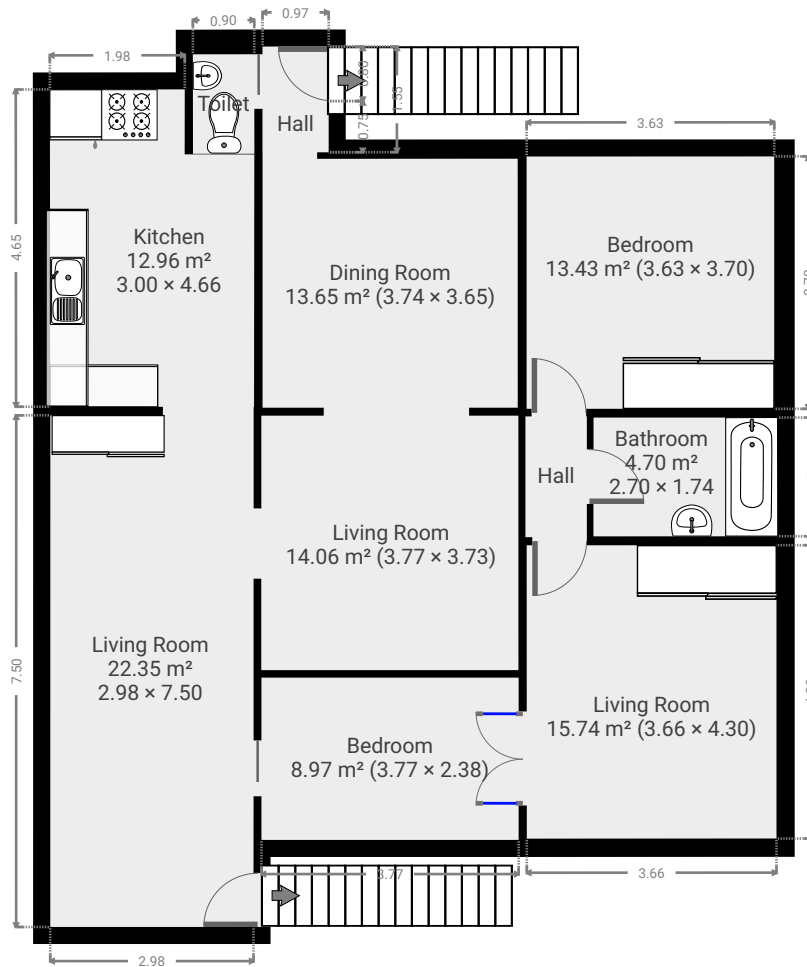


▼ **Garage**  
Ground Floor

WIDTH: 7.00 m • LENGTH: 7.00 m  
AREA: 49.00 m<sup>2</sup> • PERIMETER: 28.00 m

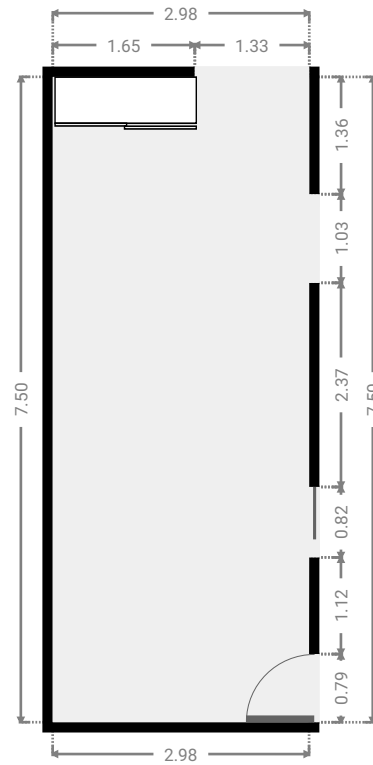
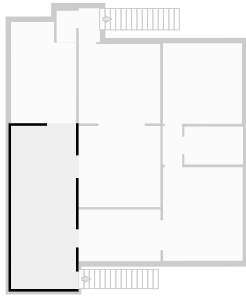


▼ 1st Floor



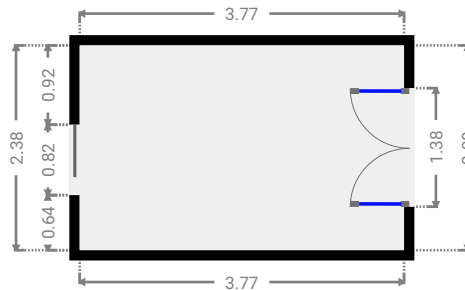
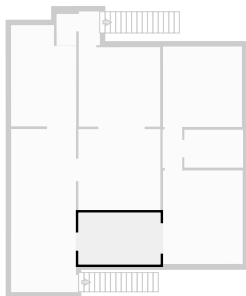
▼ Living Room  
1st Floor

WIDTH: 2.98 m • LENGTH: 7.50 m  
AREA: 22.35 m<sup>2</sup> • PERIMETER: 20.96 m



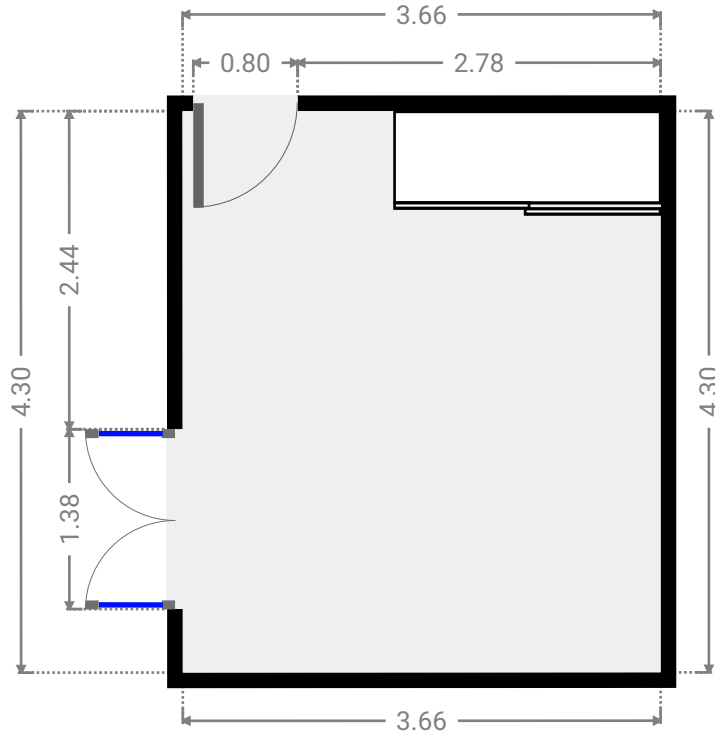
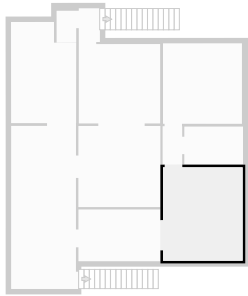
▼ Bedroom  
1st Floor

WIDTH: 3.77 m • LENGTH: 2.38 m  
AREA: 8.97 m<sup>2</sup> • PERIMETER: 12.30 m



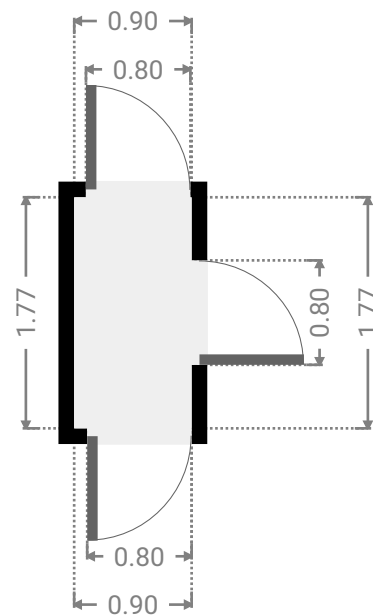
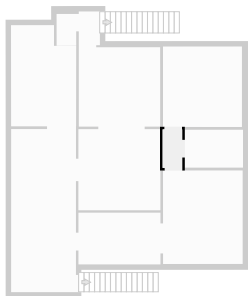
▼ **Living Room**  
1st Floor

WIDTH: 3.66 m • LENGTH: 4.30 m  
AREA: 15.74 m<sup>2</sup> • PERIMETER: 15.92 m



▼ **Hall**  
1st Floor

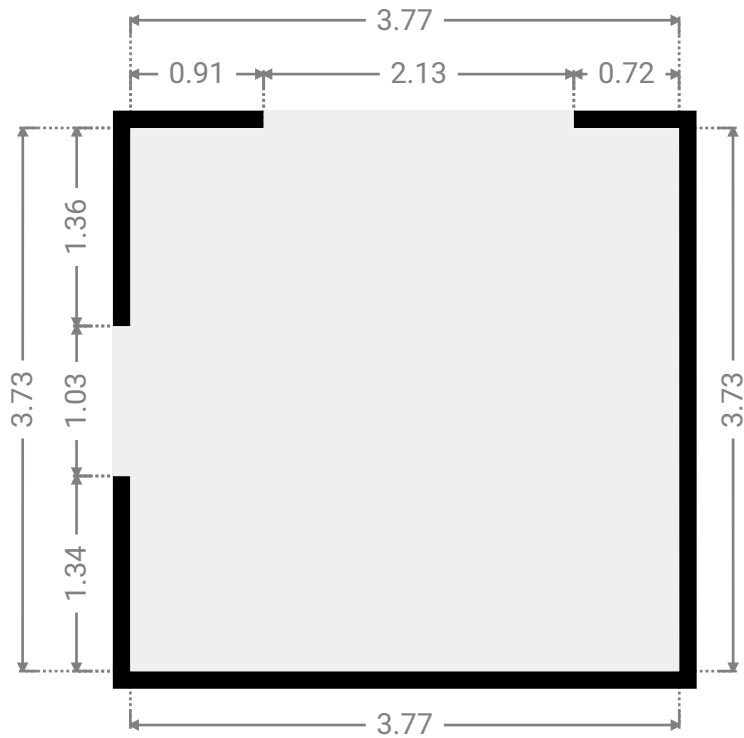
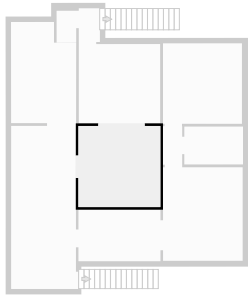
WIDTH: 0.90 m • LENGTH: 1.77 m  
AREA: 1.59 m<sup>2</sup> • PERIMETER: 5.34 m





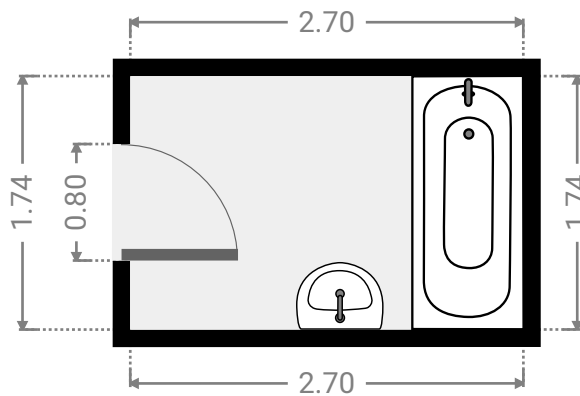
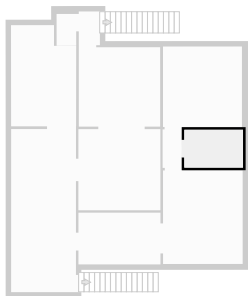
▼ **Living Room**  
1st Floor

WIDTH: 3.77 m • LENGTH: 3.73 m  
AREA: 14.06 m<sup>2</sup> • PERIMETER: 15.00 m



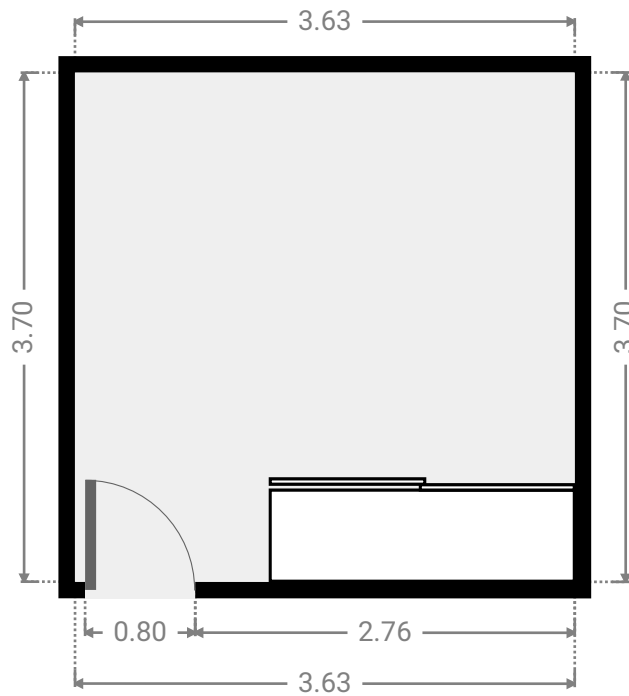
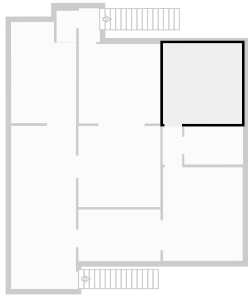
▼ **Bathroom**  
1st Floor

WIDTH: 2.70 m • LENGTH: 1.74 m  
AREA: 4.70 m<sup>2</sup> • PERIMETER: 8.88 m



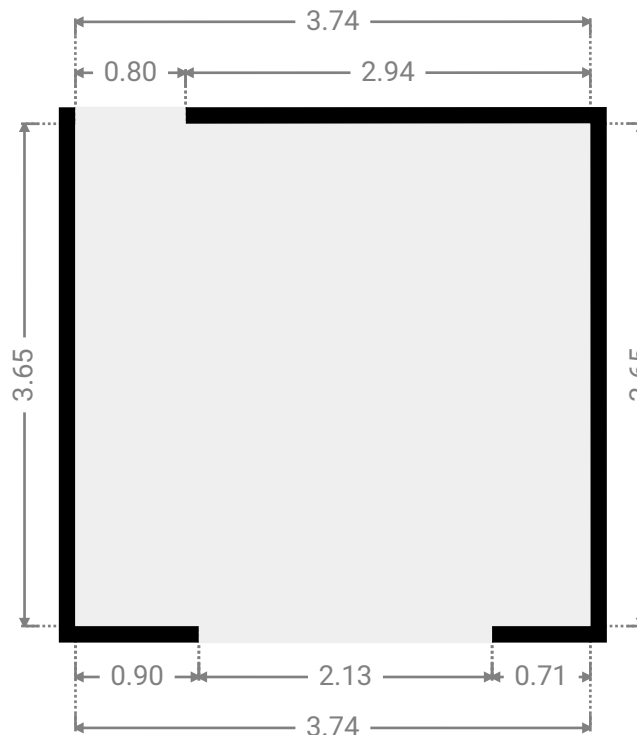
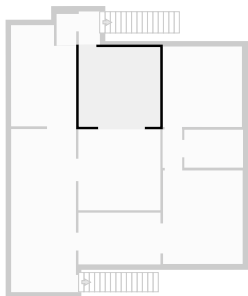
▼ **Bedroom**  
1st Floor

WIDTH: 3.63 m • LENGTH: 3.70 m  
AREA: 13.43 m<sup>2</sup> • PERIMETER: 14.66 m



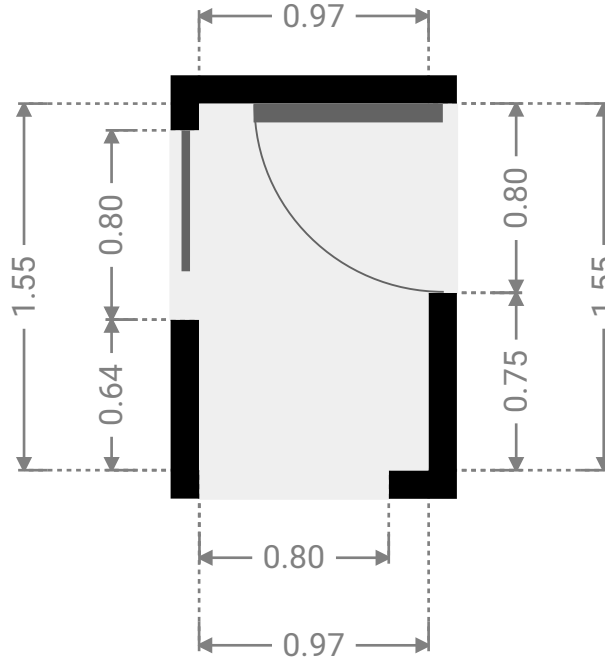
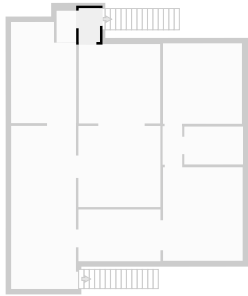
▼ **Dining Room**  
1st Floor

WIDTH: 3.74 m • LENGTH: 3.65 m  
AREA: 13.65 m<sup>2</sup> • PERIMETER: 14.78 m



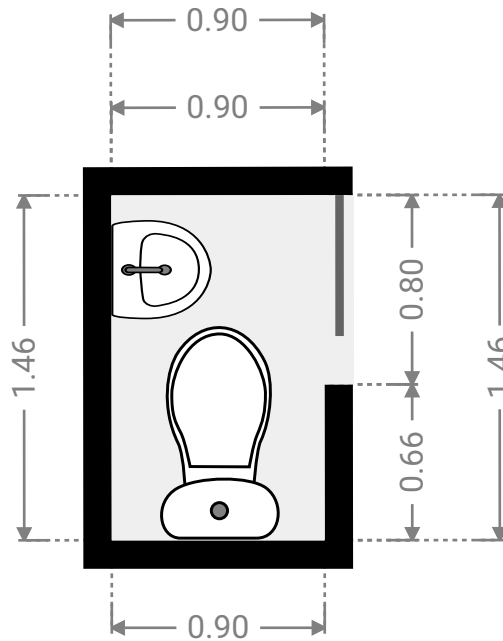
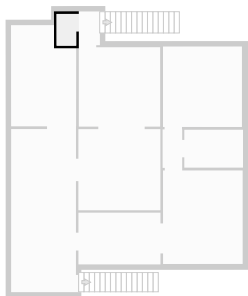
▼ **Hall**  
1st Floor

WIDTH: 0.97 m • LENGTH: 1.55 m  
AREA: 1.50 m<sup>2</sup> • PERIMETER: 5.04 m



▼ **Toilet**  
1st Floor

WIDTH: 0.90 m • LENGTH: 1.46 m  
AREA: 1.31 m<sup>2</sup> • PERIMETER: 4.72 m



▼ **Kitchen**  
1st Floor

WIDTH: 3.00 m • LENGTH: 4.66 m  
AREA: 12.96 m<sup>2</sup> • PERIMETER: 15.29 m

