

104 Costello Road

SUBMITTED BY

Ray White Rockhampton Casey
stockers@cqoz.com

CREATED ON

2021-11-02

Floors

1

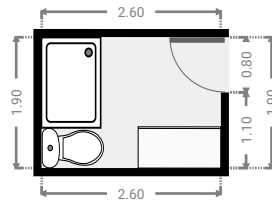
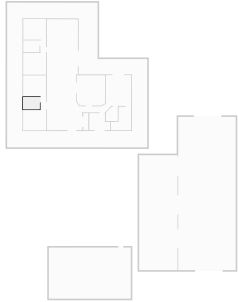
▼ Ground Floor



FLOORS: 1

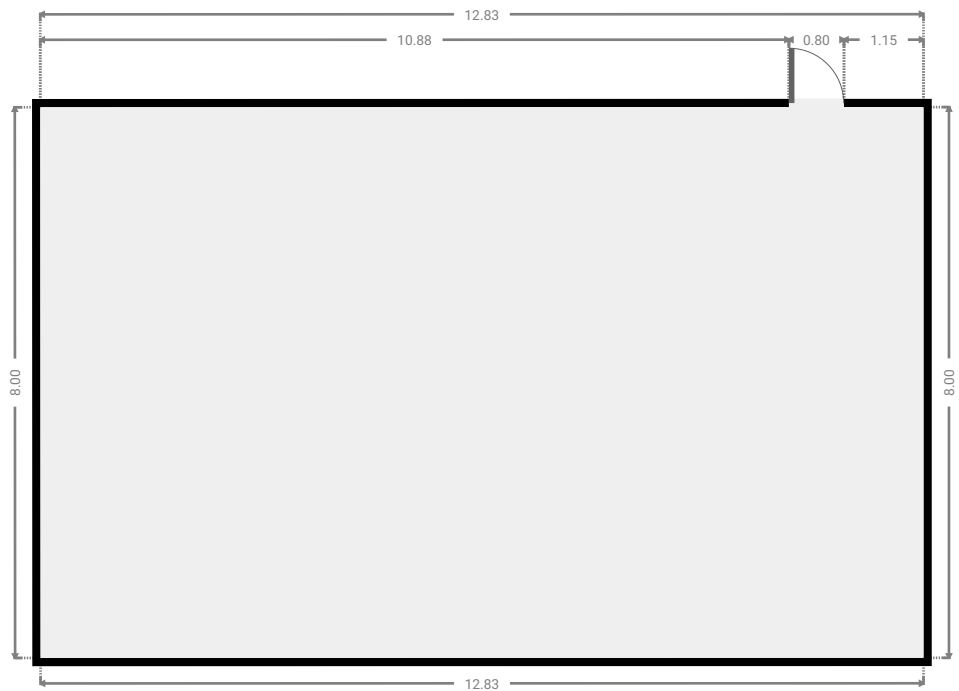
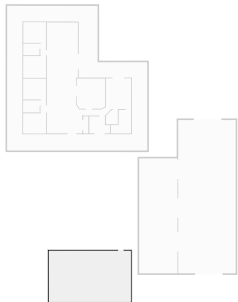
▼ Bathroom
Ground Floor

WIDTH: 2.60 m • LENGTH: 1.90 m
AREA: 4.94 m² • PERIMETER: 9.00 m



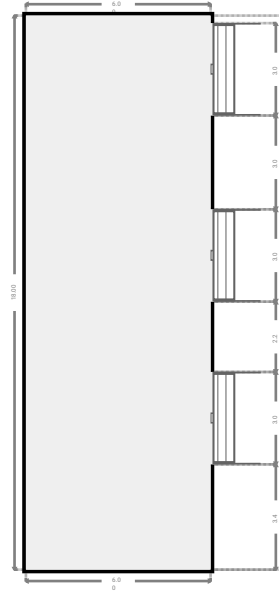
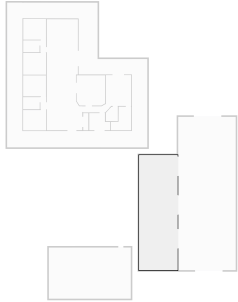
▼ Other
Ground Floor

WIDTH: 12.83 m • LENGTH: 8.00 m
AREA: 102.64 m² • PERIMETER: 41.66 m



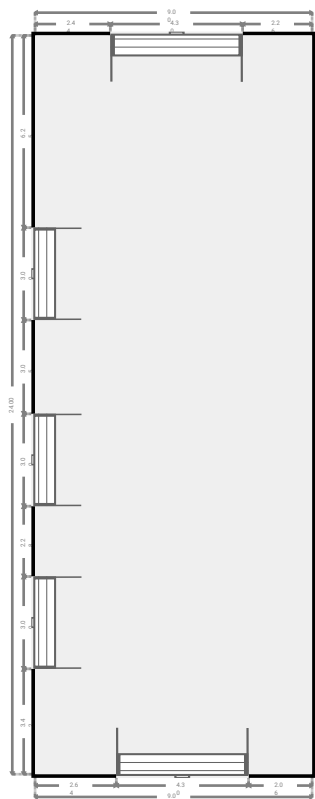
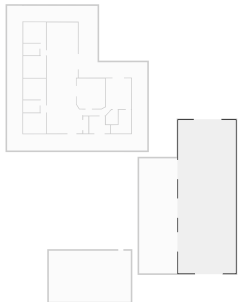
▼ Other
Ground Floor

WIDTH: 6.00 m • LENGTH: 18.00 m
AREA: 108.00 m² • PERIMETER: 48.00 m



▼ Other
Ground Floor

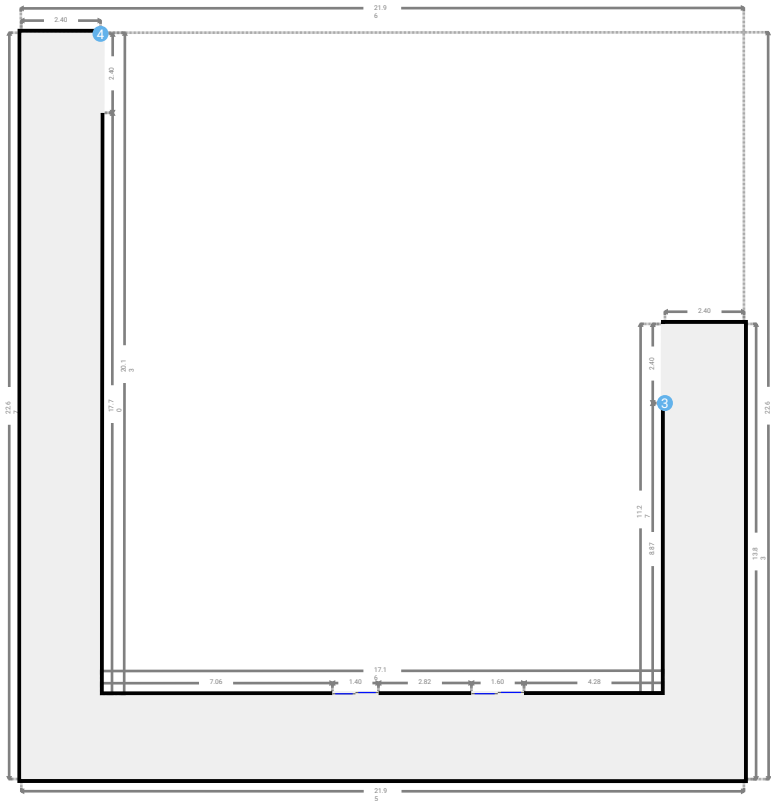
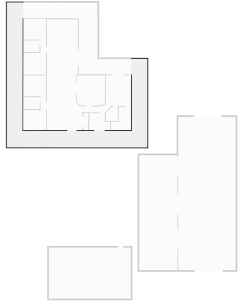
WIDTH: 9.00 m • LENGTH: 24.00 m
AREA: 216.00 m² • PERIMETER: 66.00 m



FLOORS: 1

▼ Other
Ground Floor

WIDTH: 21.96 m • LENGTH: 22.68 m
AREA: 131.13 m² • PERIMETER: 111.81 m



▼ Other/Ground Floor

3 OPENING

Height
0.00 m



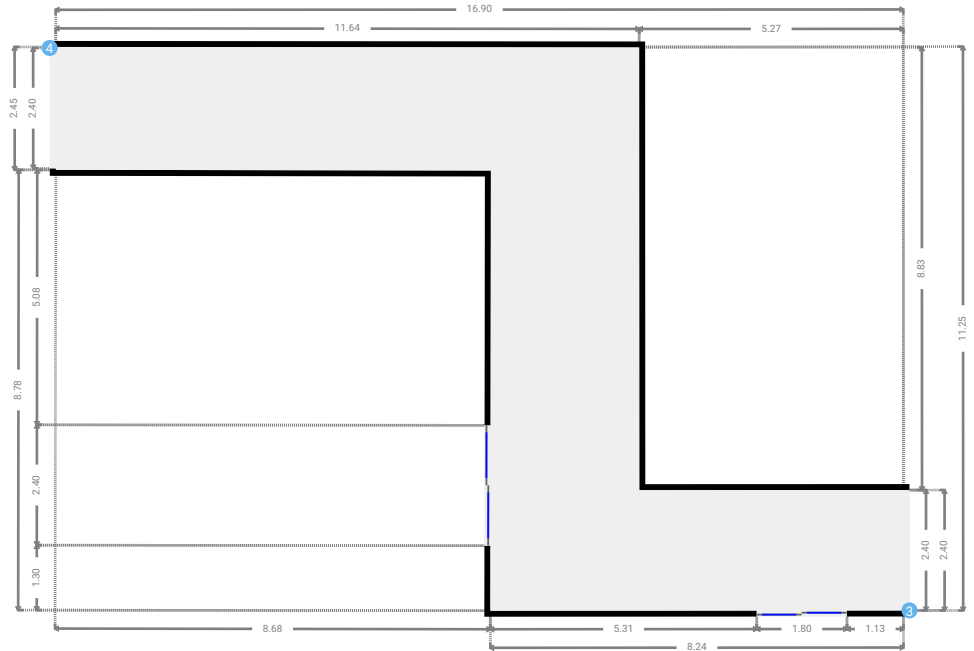
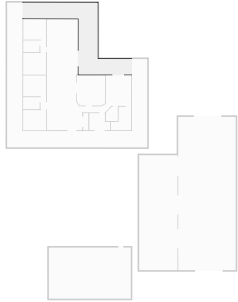
4 OPENING

Height
0.00 m



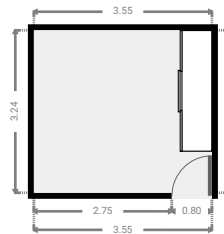
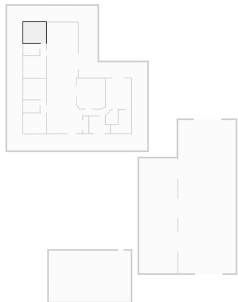
▼ Other
Ground Floor

WIDTH: 16.90 m • LENGTH: 11.25 m
AREA: 67.21 m² • PERIMETER: 56.28 m



▼ Bedroom
Ground Floor

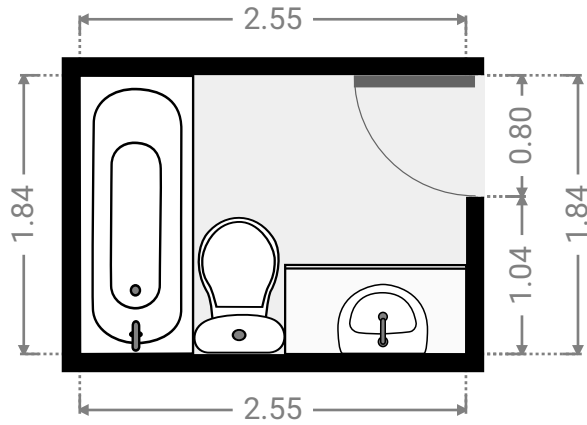
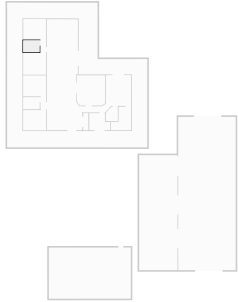
WIDTH: 3.55 m • LENGTH: 3.24 m
AREA: 11.50 m² • PERIMETER: 13.58 m



FLOORS: 1

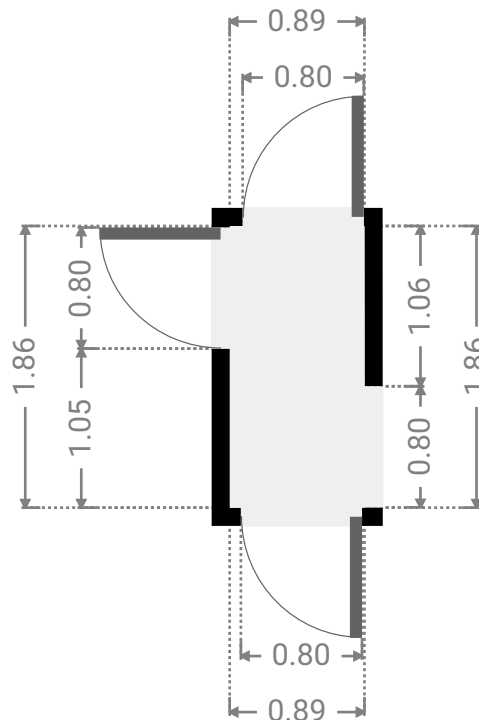
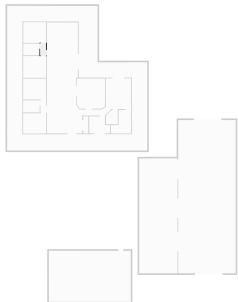
▼ **Bathroom**
Ground Floor

WIDTH: 2.55 m • LENGTH: 1.84 m
AREA: 4.69 m² • PERIMETER: 8.78 m



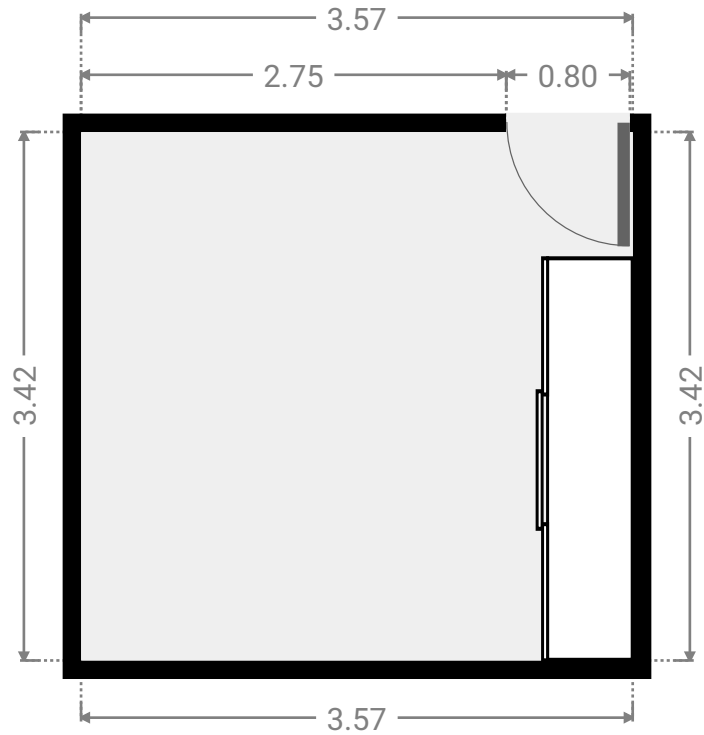
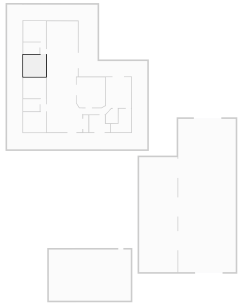
▼ **Hall**
Ground Floor

WIDTH: 0.89 m • LENGTH: 1.86 m
AREA: 1.66 m² • PERIMETER: 5.50 m



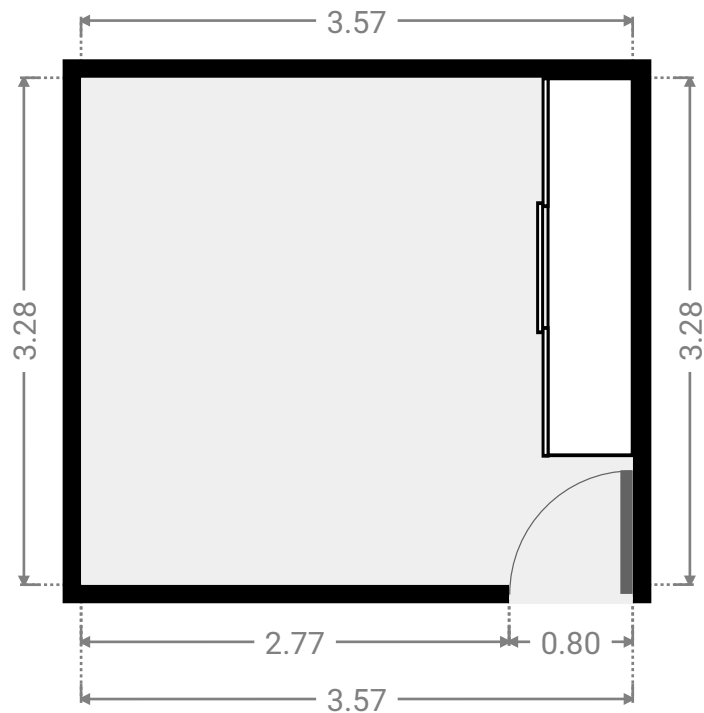
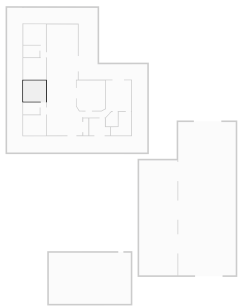
▼ **Bedroom**
Ground Floor

WIDTH: 3.57 m • LENGTH: 3.42 m
AREA: 12.21 m² • PERIMETER: 13.98 m



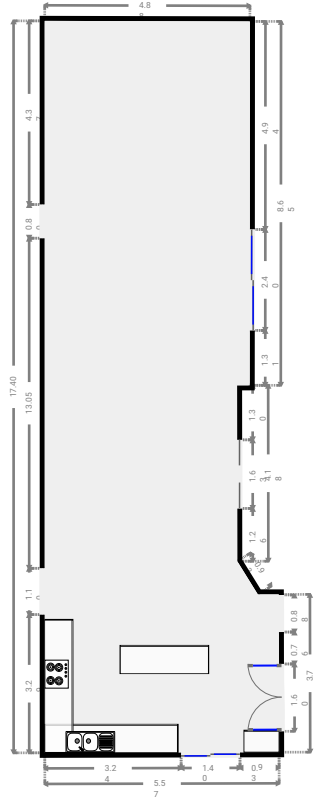
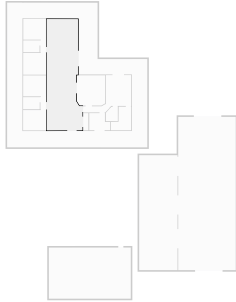
▼ **Bedroom**
Ground Floor

WIDTH: 3.57 m • LENGTH: 3.28 m
AREA: 11.71 m² • PERIMETER: 13.70 m



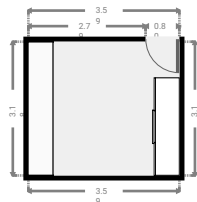
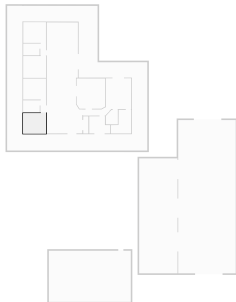
▼ **Kitchen**
Ground Floor

WIDTH: 5.57 m • LENGTH: 17.40 m
AREA: 86.06 m² • PERIMETER: 46.16 m



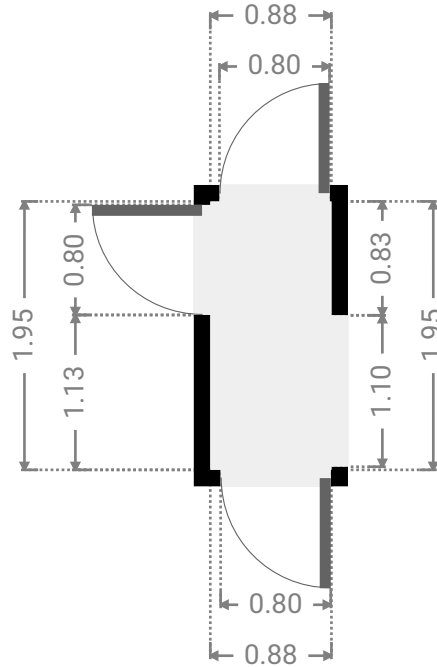
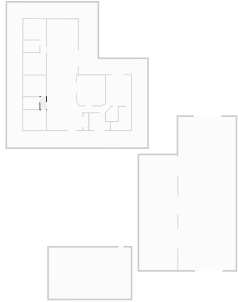
▼ **Bedroom**
Ground Floor

WIDTH: 3.59 m • LENGTH: 3.18 m
AREA: 11.42 m² • PERIMETER: 13.54 m



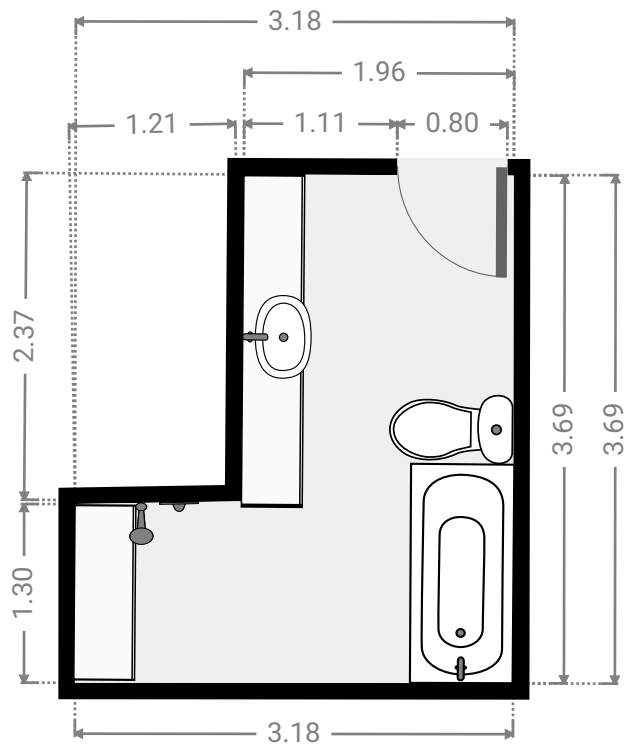
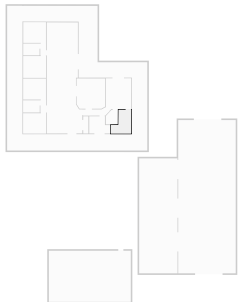
▼ **Hall**
Ground Floor

WIDTH: 0.88 m • LENGTH: 1.95 m
AREA: 1.72 m² • PERIMETER: 5.66 m



▼ **Bathroom**
Ground Floor

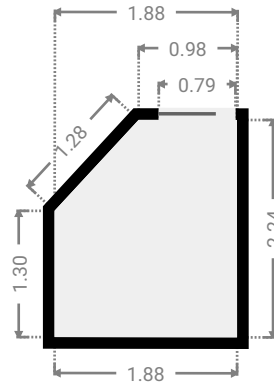
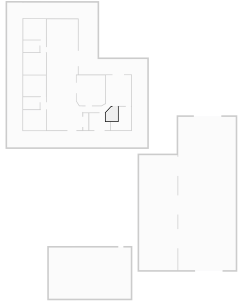
WIDTH: 3.18 m • LENGTH: 3.69 m
AREA: 8.85 m² • PERIMETER: 13.71 m



FLOORS: 1

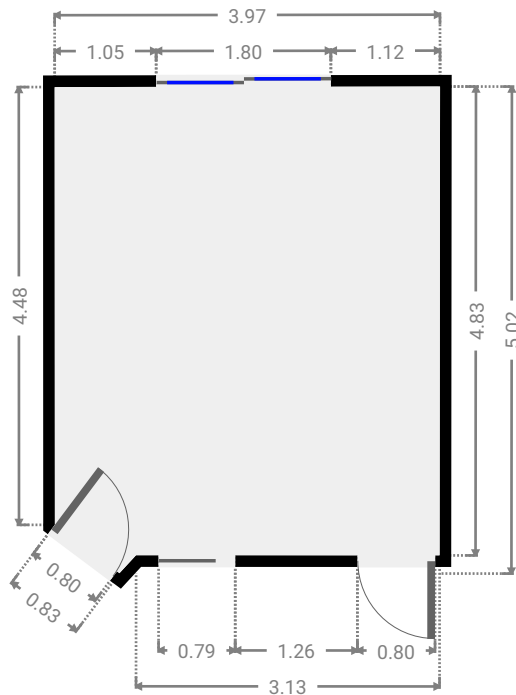
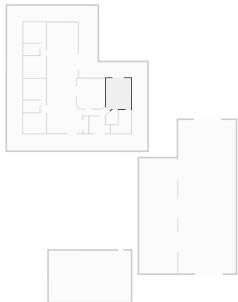
▼ Closet
Ground Floor

WIDTH: 1.88 m • LENGTH: 2.24 m
AREA: 3.80 m² • PERIMETER: 7.71 m



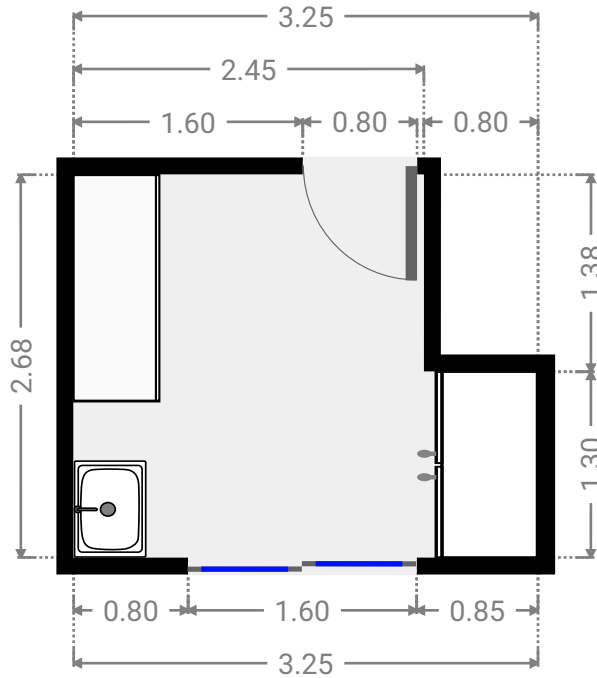
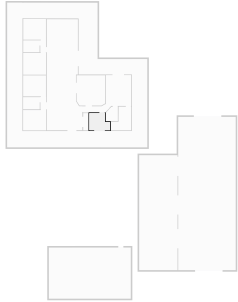
▼ Master Bedroom
Ground Floor

WIDTH: 3.97 m • LENGTH: 5.02 m
AREA: 19.12 m² • PERIMETER: 17.52 m



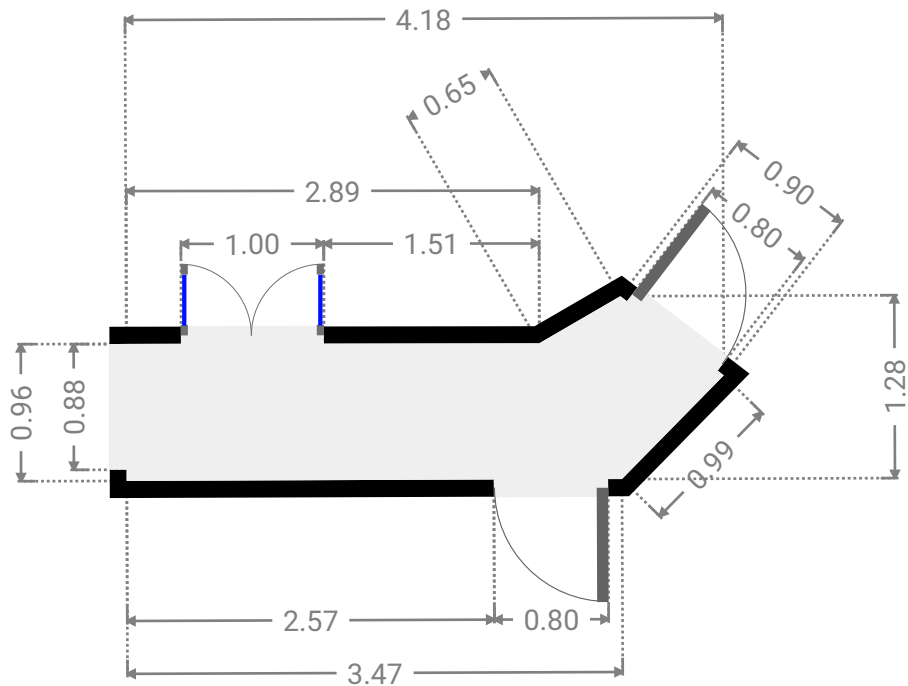
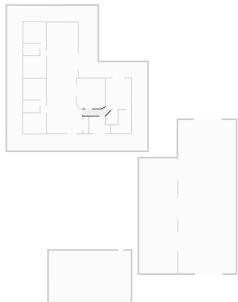
▼ Laundry Room
Ground Floor

WIDTH: 3.25 m • LENGTH: 2.68 m
AREA: 7.61 m² • PERIMETER: 11.86 m



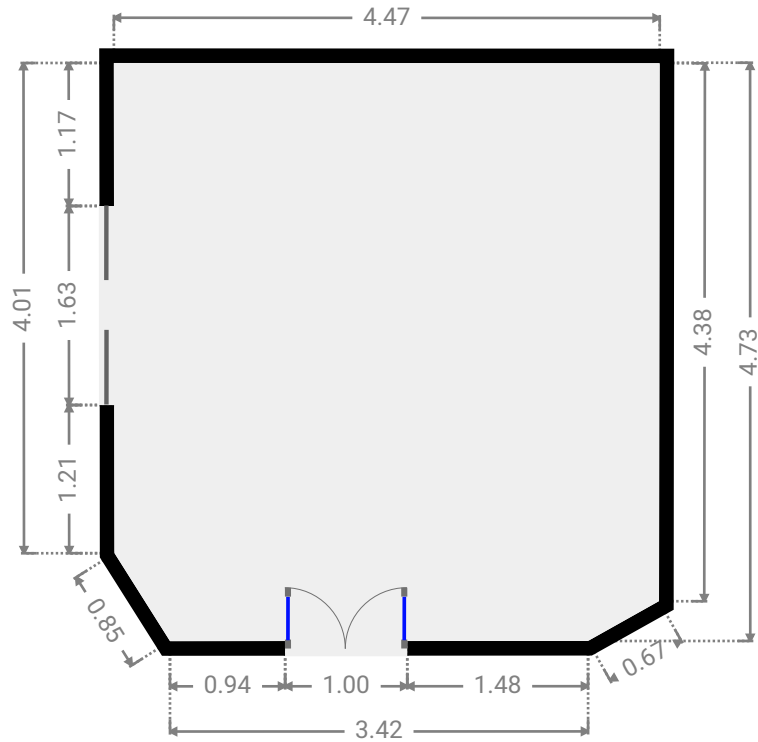
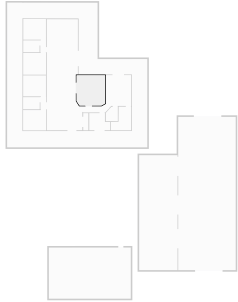
▼ Hall
Ground Floor

WIDTH: 4.18 m • LENGTH: 1.28 m
AREA: 3.86 m² • PERIMETER: 9.90 m



▼ **Living Room**
Ground Floor

WIDTH: 4.47 m • LENGTH: 4.73 m
AREA: 20.87 m² • PERIMETER: 17.83 m



▼ **Closet**
Ground Floor

WIDTH: 0.80 m • LENGTH: 2.68 m
AREA: 2.15 m² • PERIMETER: 6.96 m

