

103 Leamington Street

SUBMITTED BY

Ray White Rockhampton Casey
stockers@cqoz.com

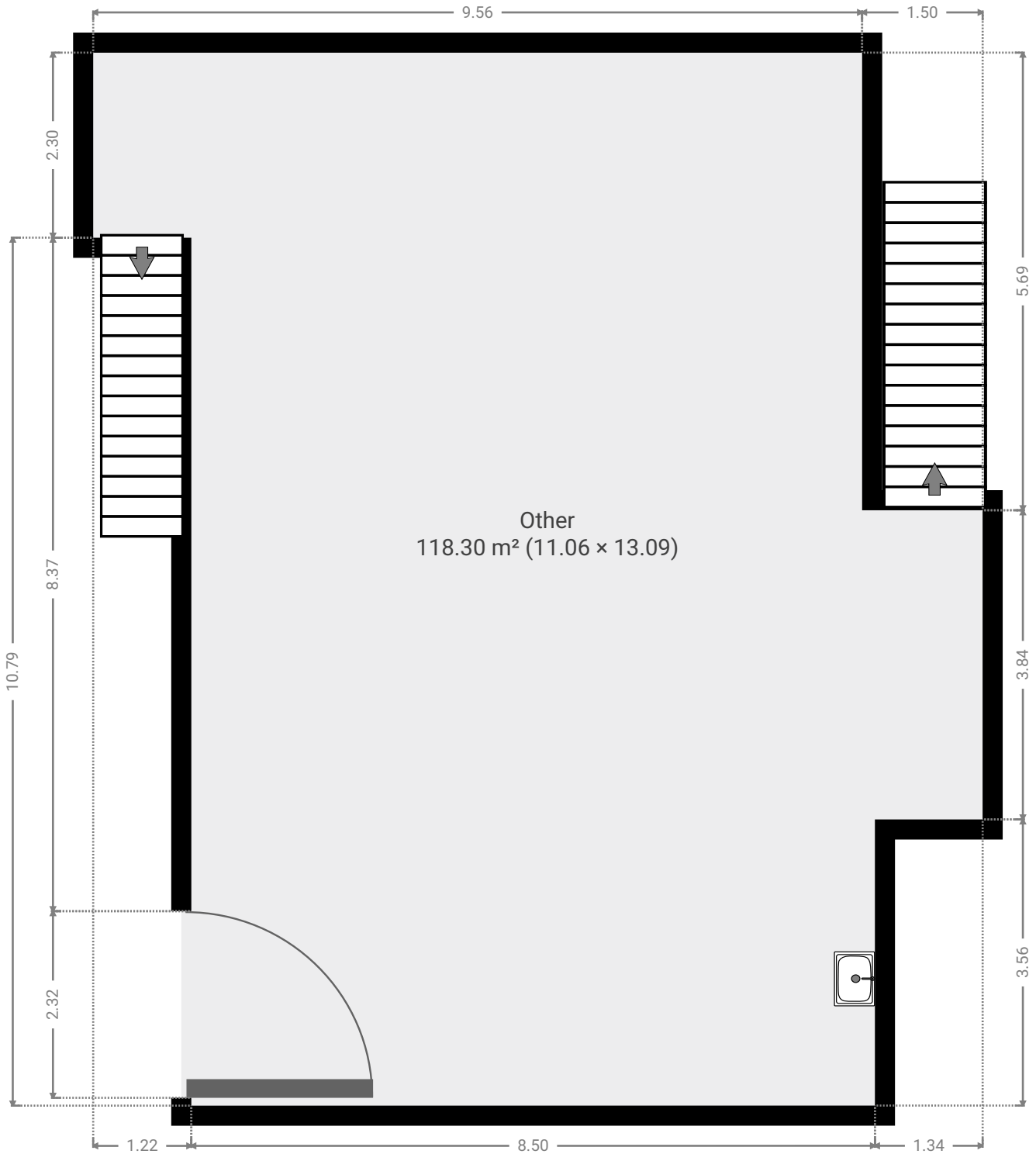
CREATED ON

2022-05-24

Floors

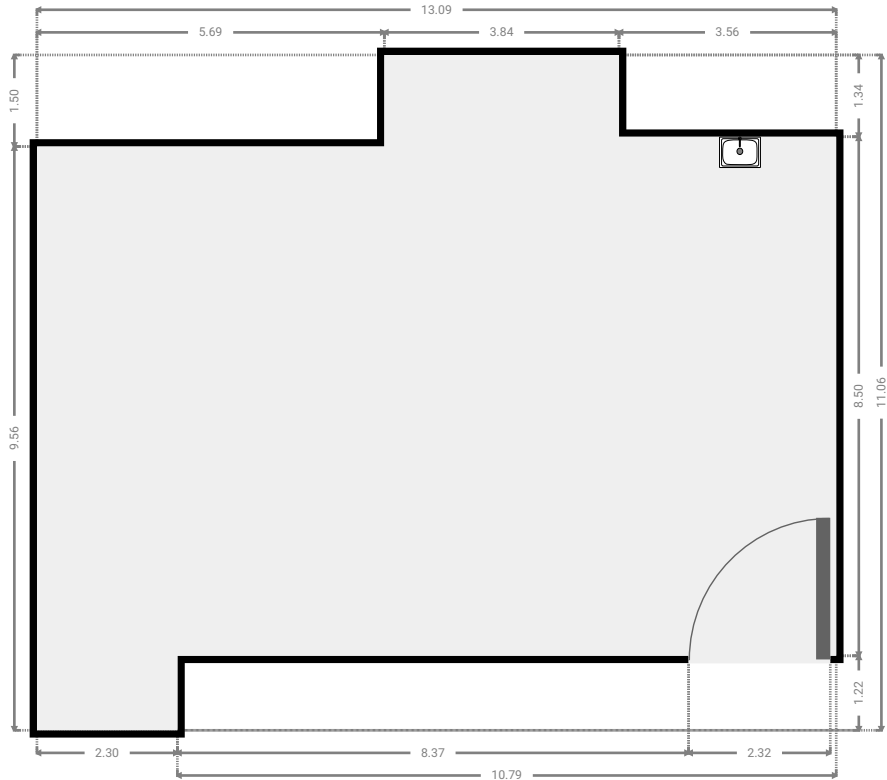
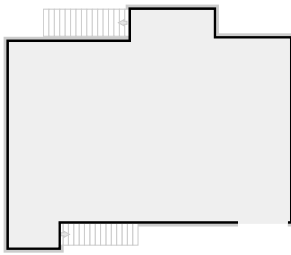
2

▼ Ground Floor

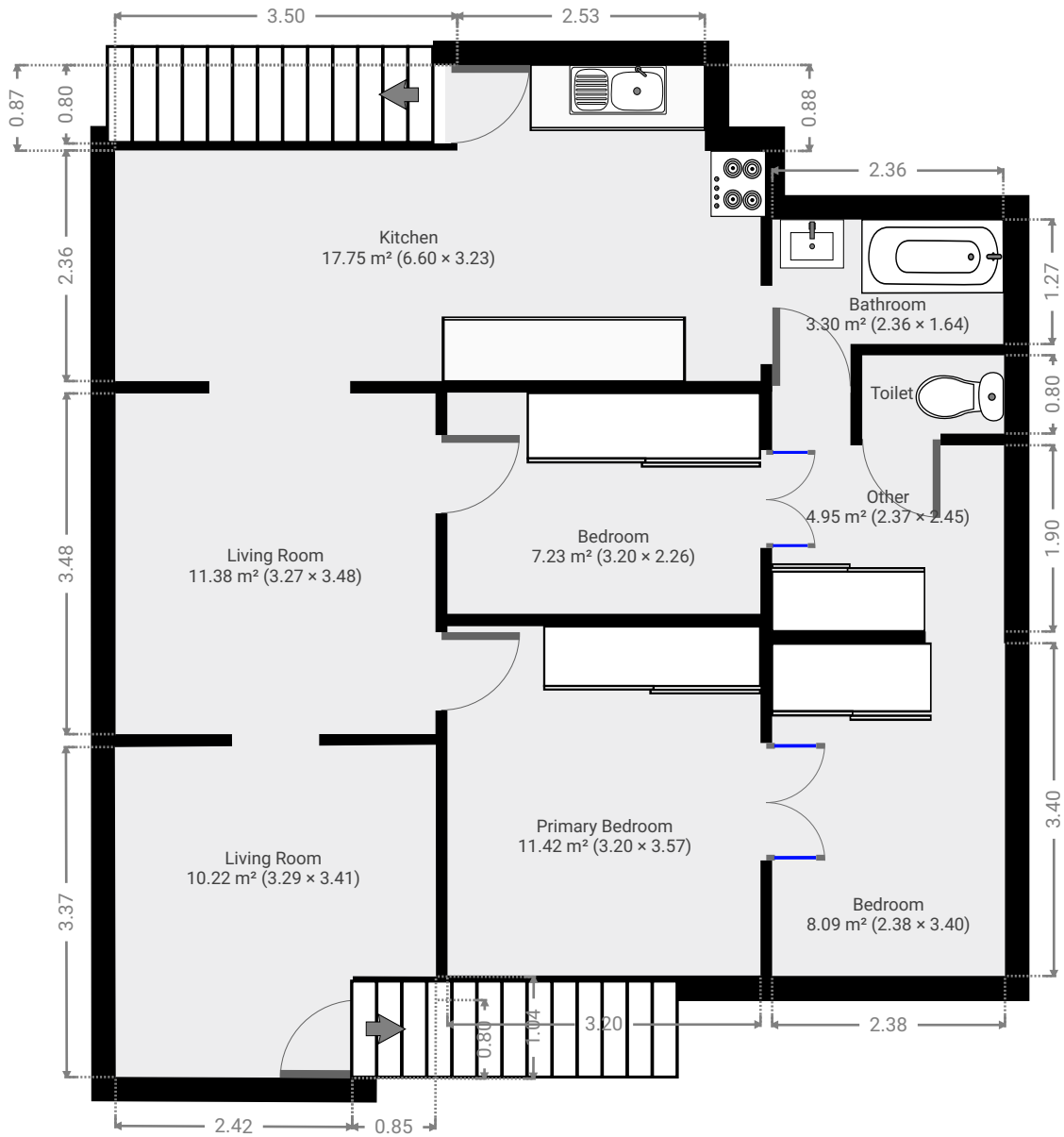


▼ Other
Ground Floor

WIDTH: 13.09 m • LENGTH: 11.06 m
AREA: 118.30 m² • PERIMETER: 48.30 m

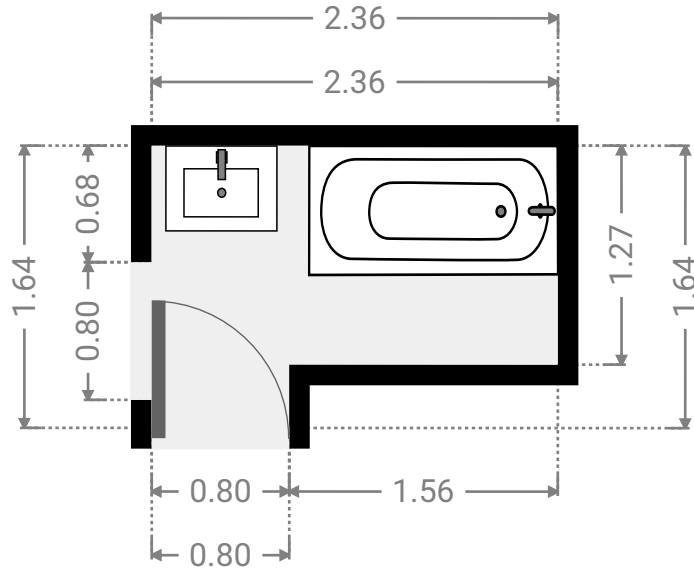
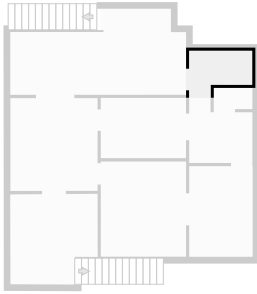


▼ 1st Floor



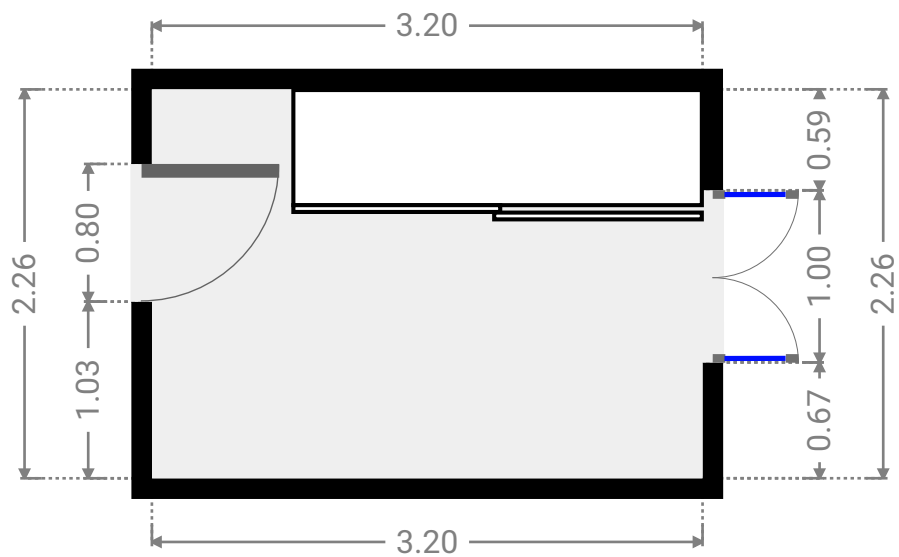
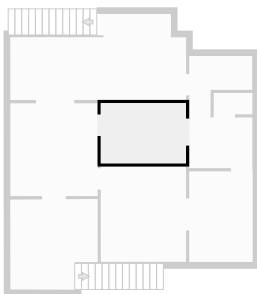
▼ **Bathroom**
1st Floor

WIDTH: 2.36 m • LENGTH: 1.64 m
AREA: 3.30 m² • PERIMETER: 8.00 m



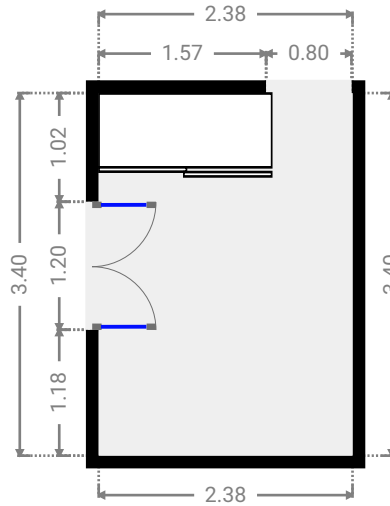
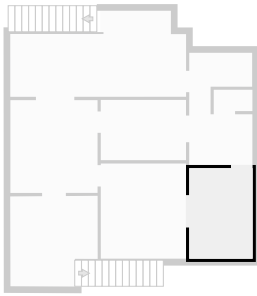
▼ **Bedroom**
1st Floor

WIDTH: 3.20 m • LENGTH: 2.26 m
AREA: 7.23 m² • PERIMETER: 10.92 m



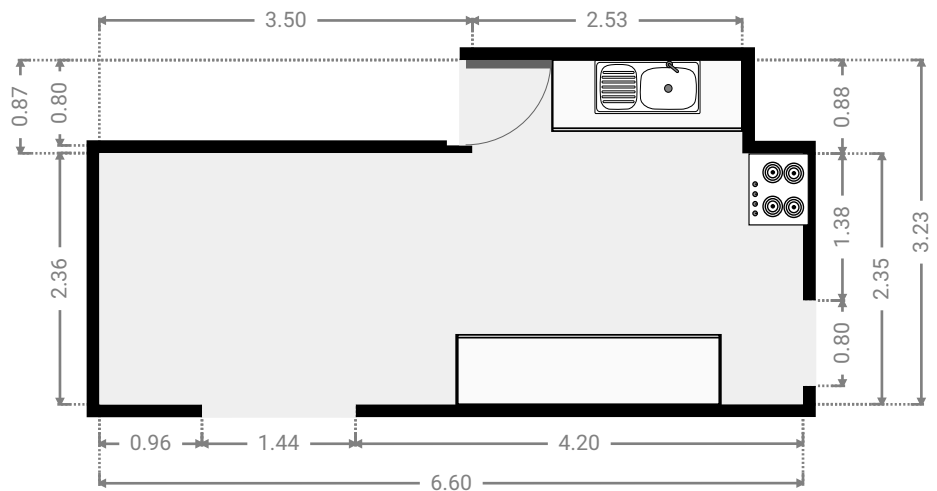
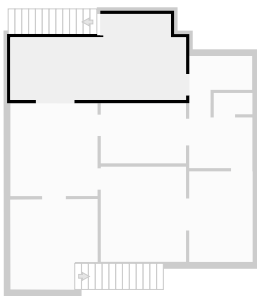
▼ **Bedroom**
1st Floor

WIDTH: 2.38 m • LENGTH: 3.40 m
AREA: 8.09 m² • PERIMETER: 11.56 m



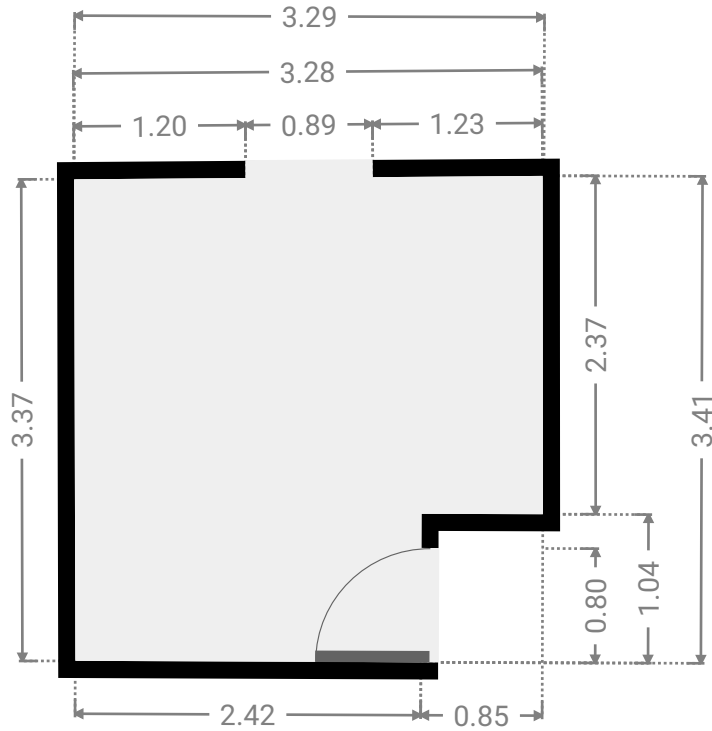
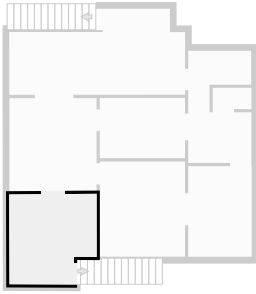
▼ **Kitchen**
1st Floor

WIDTH: 6.60 m • LENGTH: 3.23 m
AREA: 17.75 m² • PERIMETER: 19.65 m



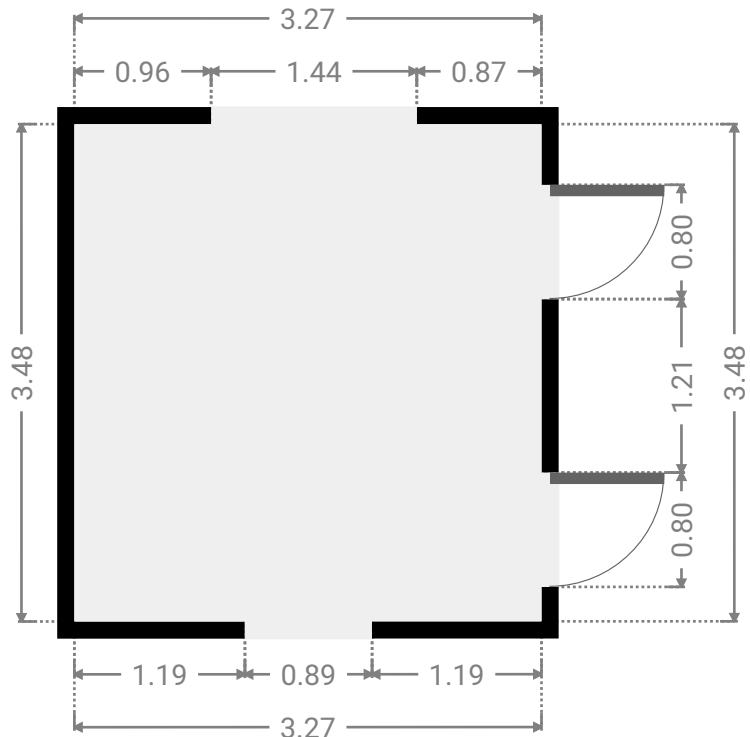
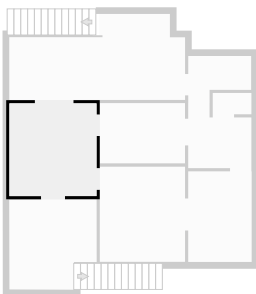
▼ Living Room
1st Floor

WIDTH: 3.29 m • LENGTH: 3.41 m
AREA: 10.22 m² • PERIMETER: 13.33 m



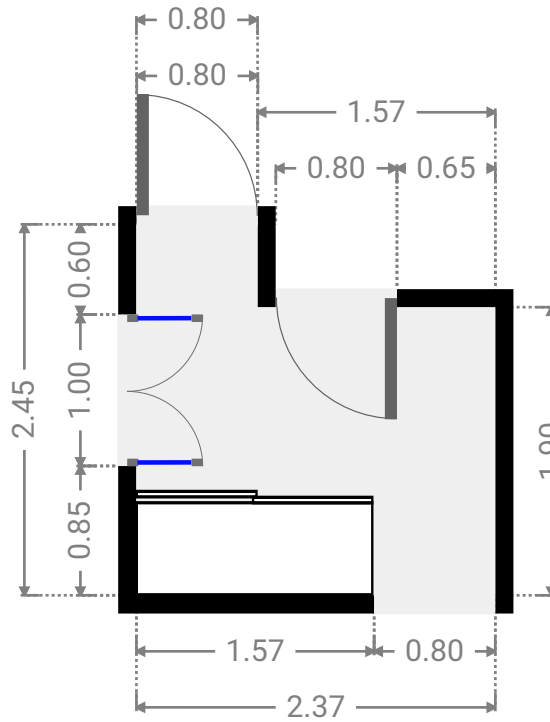
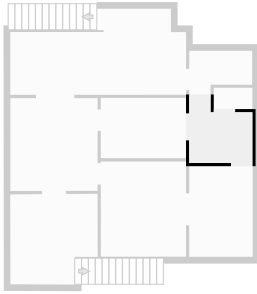
▼ Living Room
1st Floor

WIDTH: 3.27 m • LENGTH: 3.48 m
AREA: 11.38 m² • PERIMETER: 13.50 m



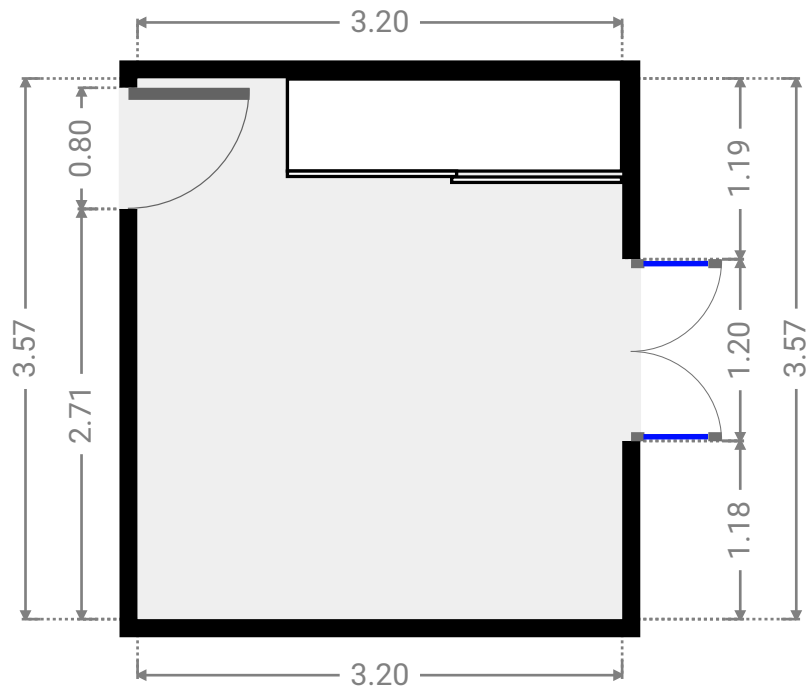
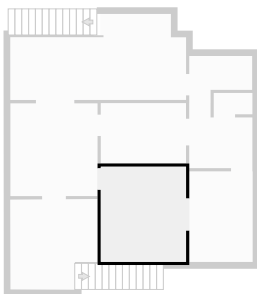
▼ Other
1st Floor

WIDTH: 2.37 m • LENGTH: 2.45 m
AREA: 4.95 m² • PERIMETER: 9.64 m



▼ Primary Bedroom
1st Floor

WIDTH: 3.20 m • LENGTH: 3.57 m
AREA: 11.42 m² • PERIMETER: 13.54 m



▼ Toilet
1st Floor

WIDTH: 1.45 m • LENGTH: 0.80 m
AREA: 1.16 m² • PERIMETER: 4.50 m

