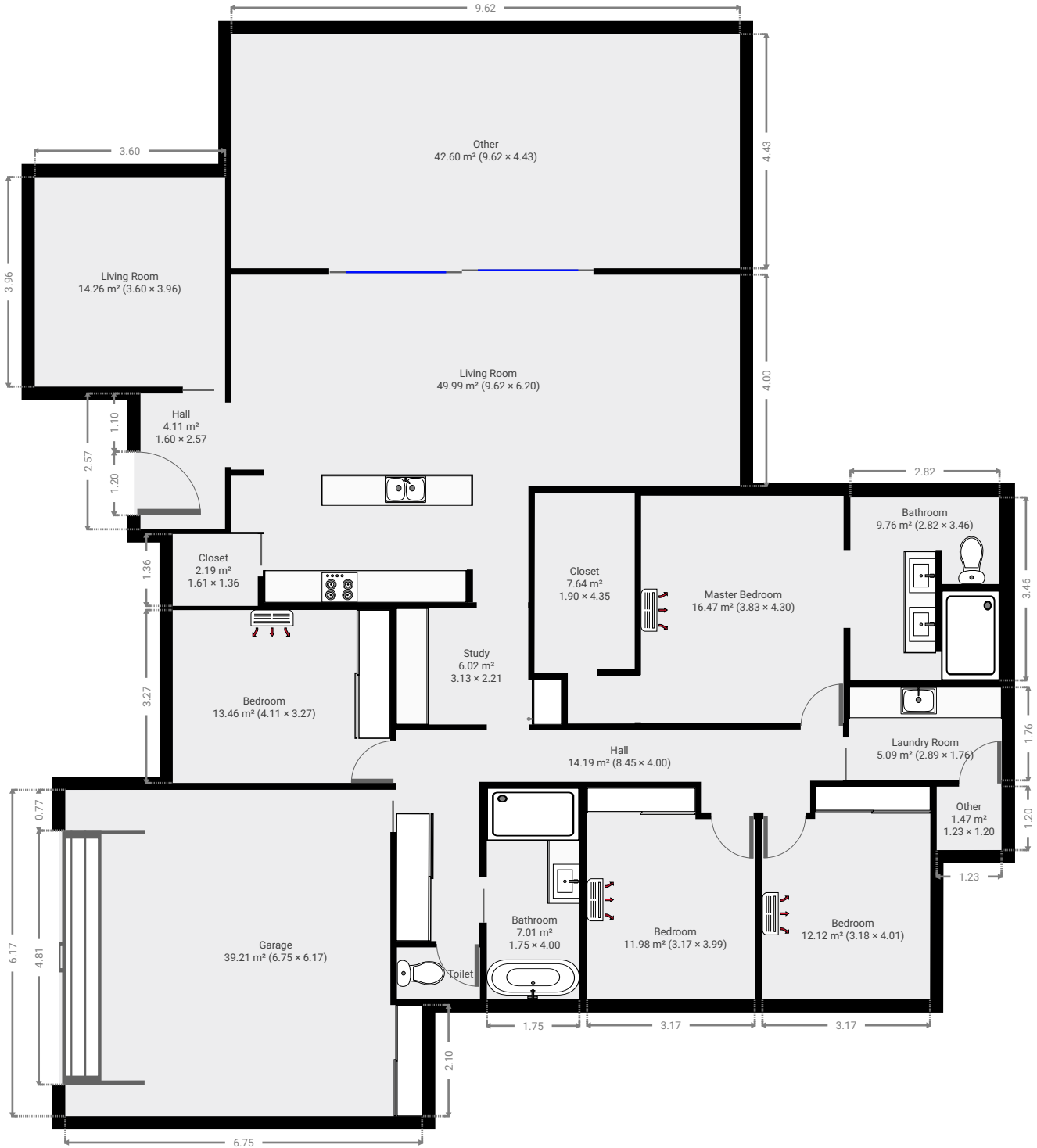


# 10 Tomtitt Avenue

Created on  
2021-03-11

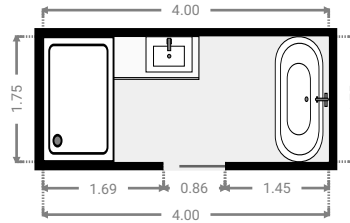
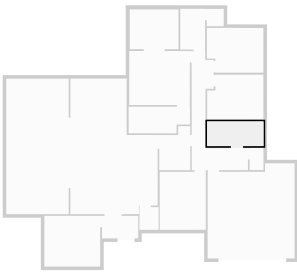
Floors  
1

▼ Ground Floor



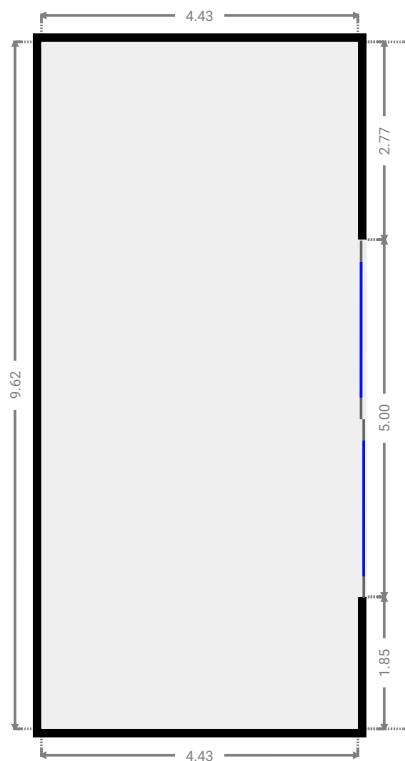
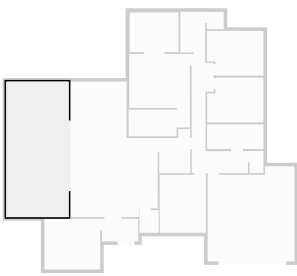
▼ **Bathroom**  
Ground Floor

WIDTH: 4.00 m • LENGTH: 1.75 m  
AREA: 7.01 m<sup>2</sup> • PERIMETER: 11.50 m



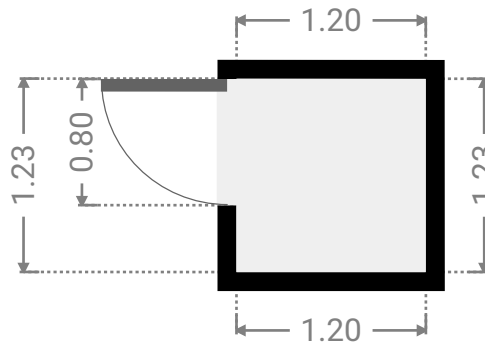
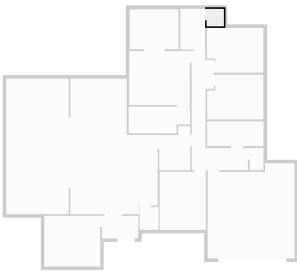
▼ **Other**  
Ground Floor

WIDTH: 4.43 m • LENGTH: 9.62 m  
AREA: 42.60 m<sup>2</sup> • PERIMETER: 28.09 m



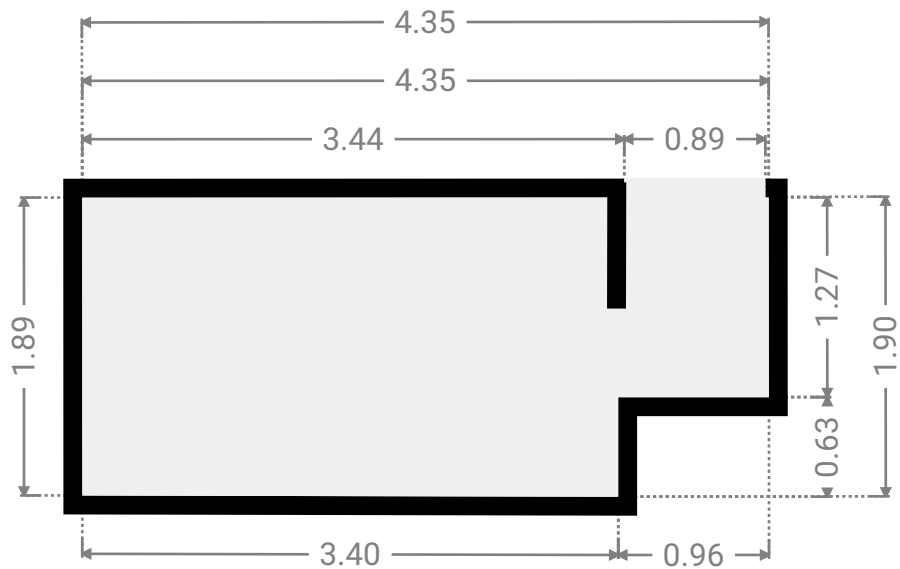
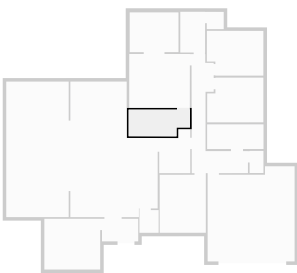
▼ Other  
Ground Floor

WIDTH: 1.20 m • LENGTH: 1.23 m  
AREA: 1.47 m<sup>2</sup> • PERIMETER: 4.85 m



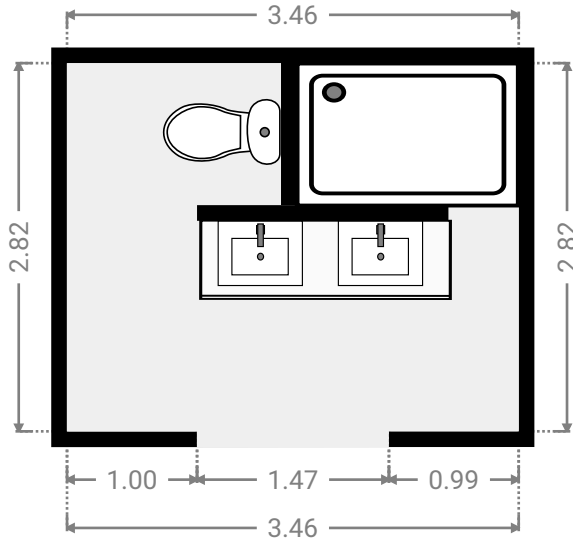
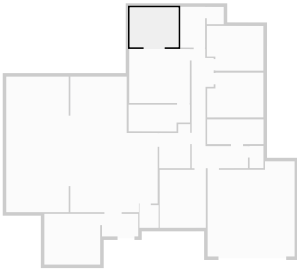
▼ Closet  
Ground Floor

WIDTH: 4.35 m • LENGTH: 1.90 m  
AREA: 7.64 m<sup>2</sup> • PERIMETER: 12.49 m



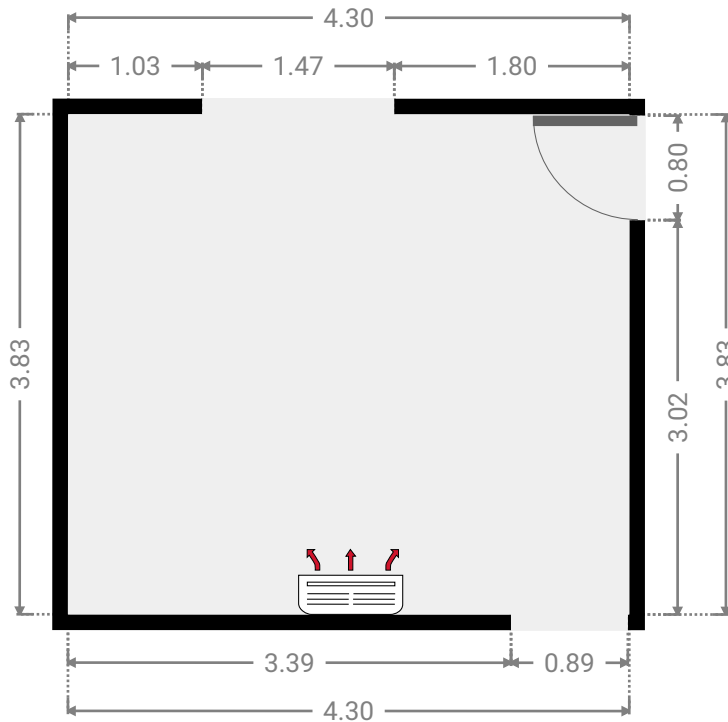
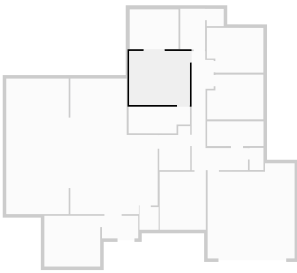
▼ Bathroom  
Ground Floor

WIDTH: 3.46 m • LENGTH: 2.82 m  
AREA: 9.76 m<sup>2</sup> • PERIMETER: 12.56 m



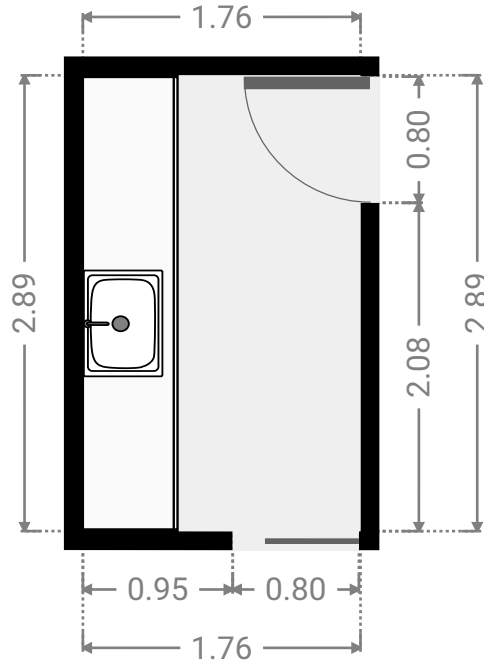
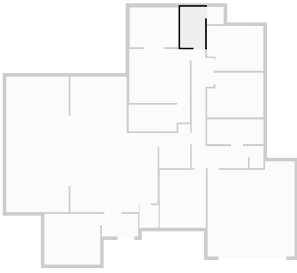
▼ Master Bedroom  
Ground Floor

WIDTH: 4.30 m • LENGTH: 3.83 m  
AREA: 16.47 m<sup>2</sup> • PERIMETER: 16.26 m



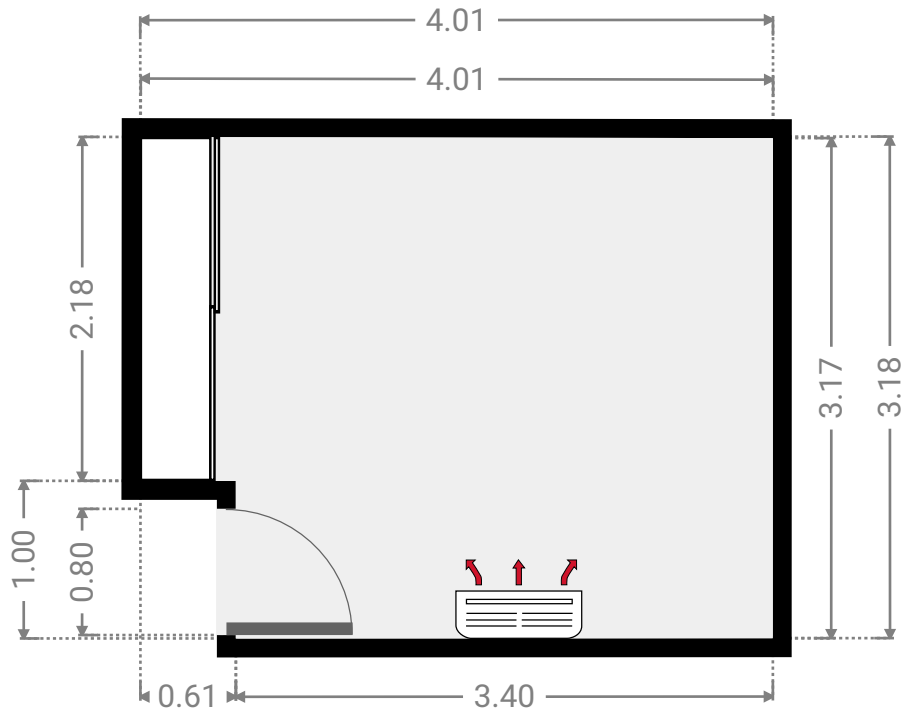
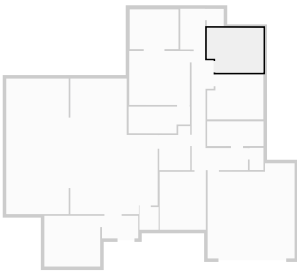
▼ **Laundry Room**  
Ground Floor

WIDTH: 1.76 m • LENGTH: 2.89 m  
AREA: 5.09 m<sup>2</sup> • PERIMETER: 9.30 m



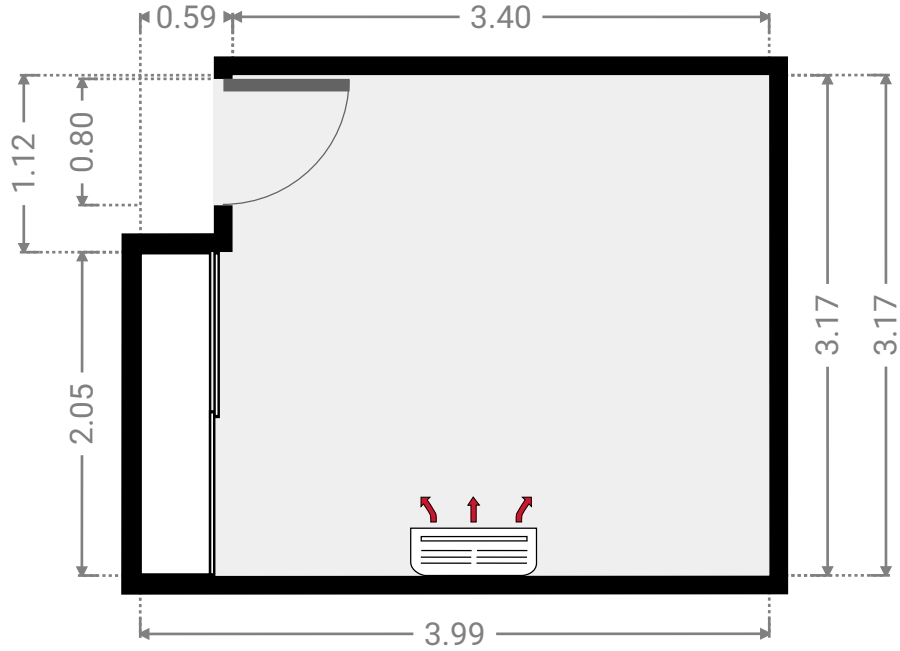
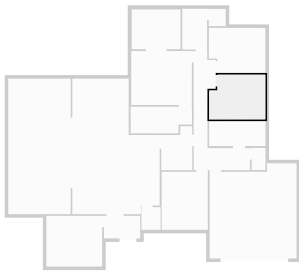
▼ **Bedroom**  
Ground Floor

WIDTH: 4.01 m • LENGTH: 3.18 m  
AREA: 12.12 m<sup>2</sup> • PERIMETER: 14.37 m



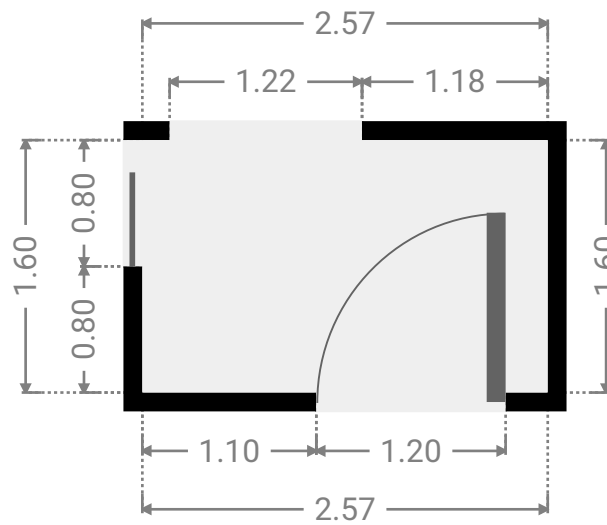
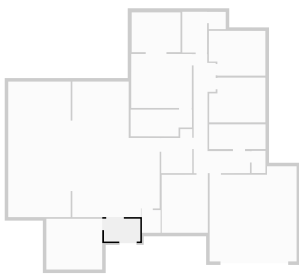
▼ **Bedroom**  
Ground Floor

WIDTH: 3.99 m • LENGTH: 3.17 m  
AREA: 11.98 m<sup>2</sup> • PERIMETER: 14.31 m



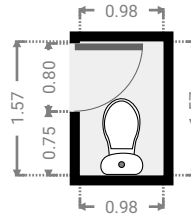
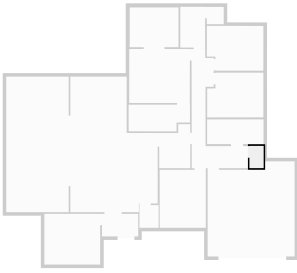
▼ **Hall**  
Ground Floor

WIDTH: 2.57 m • LENGTH: 1.60 m  
AREA: 4.11 m<sup>2</sup> • PERIMETER: 8.34 m



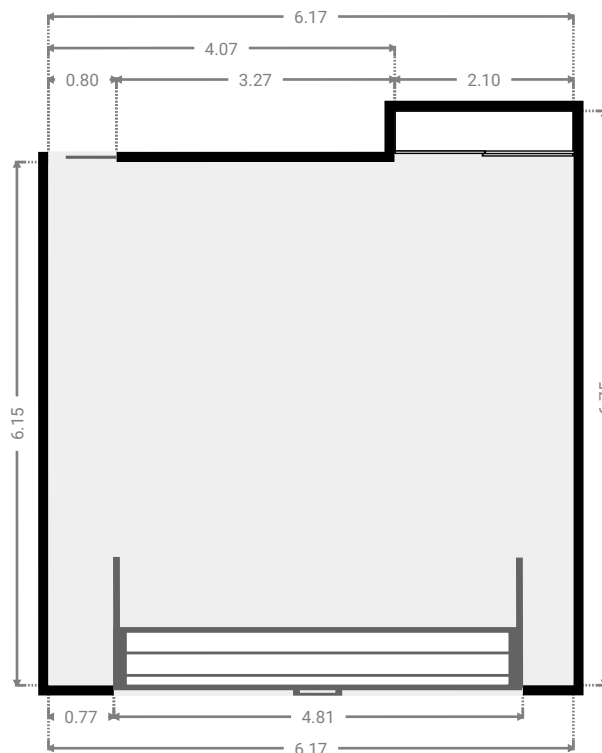
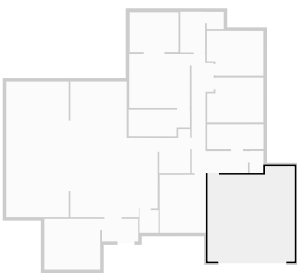
▼ Toilet  
Ground Floor

WIDTH: 0.98 m • LENGTH: 1.57 m  
AREA: 1.54 m<sup>2</sup> • PERIMETER: 5.10 m



▼ Garage  
Ground Floor

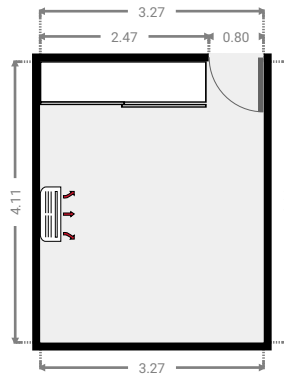
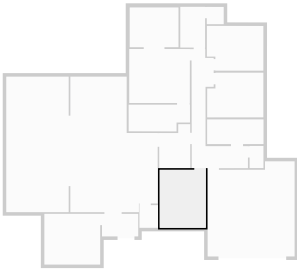
WIDTH: 6.17 m • LENGTH: 6.75 m  
AREA: 39.21 m<sup>2</sup> • PERIMETER: 25.84 m





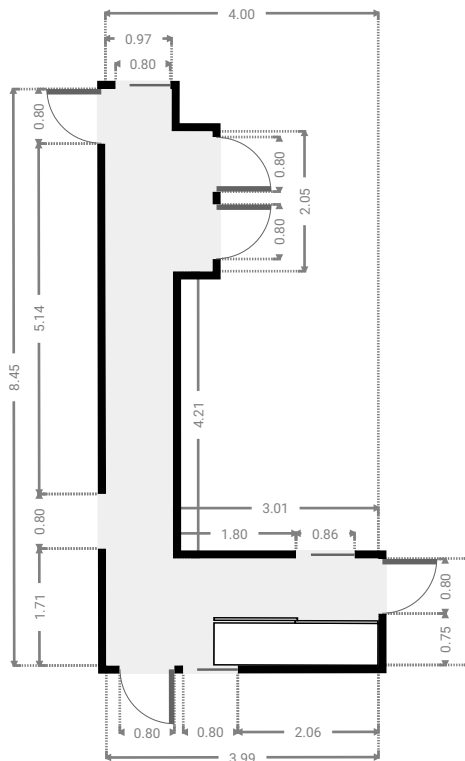
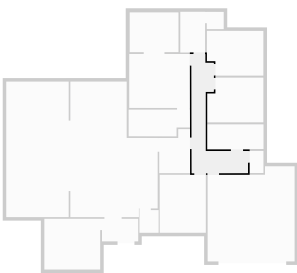
▼ **Bedroom**  
Ground Floor

WIDTH: 3.27 m • LENGTH: 4.11 m  
AREA: 13.46 m<sup>2</sup> • PERIMETER: 14.77 m



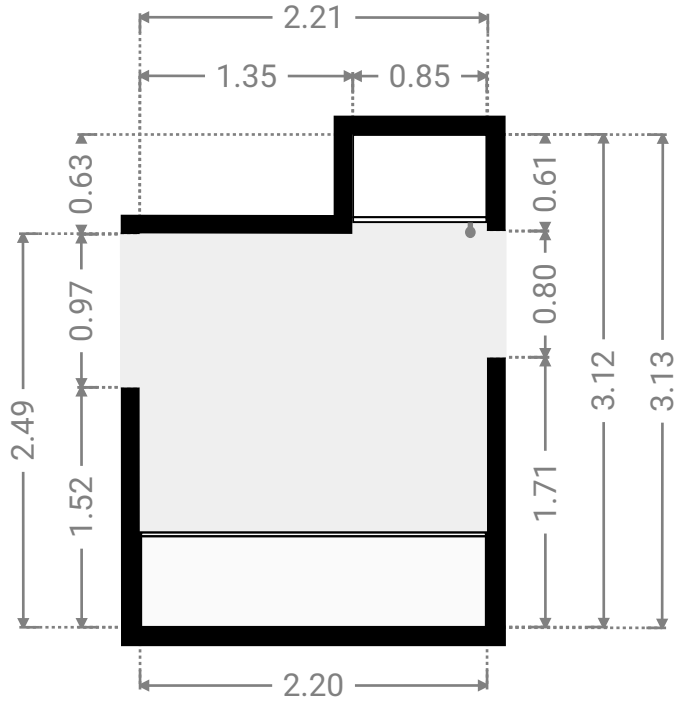
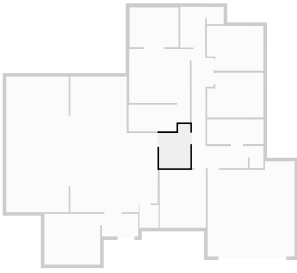
▼ **Hall**  
Ground Floor

WIDTH: 4.00 m • LENGTH: 8.45 m  
AREA: 14.19 m<sup>2</sup> • PERIMETER: 26.04 m



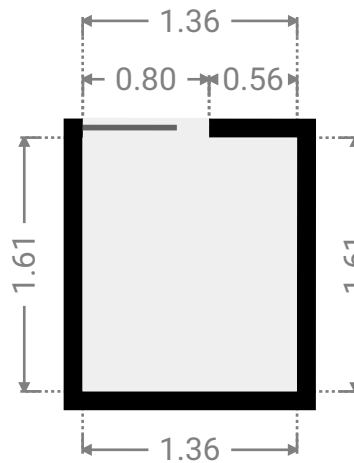
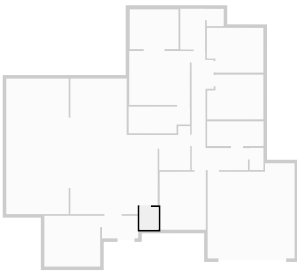
▼ **Study**  
Ground Floor

WIDTH: 2.21 m • LENGTH: 3.13 m  
AREA: 6.02 m<sup>2</sup> • PERIMETER: 10.65 m



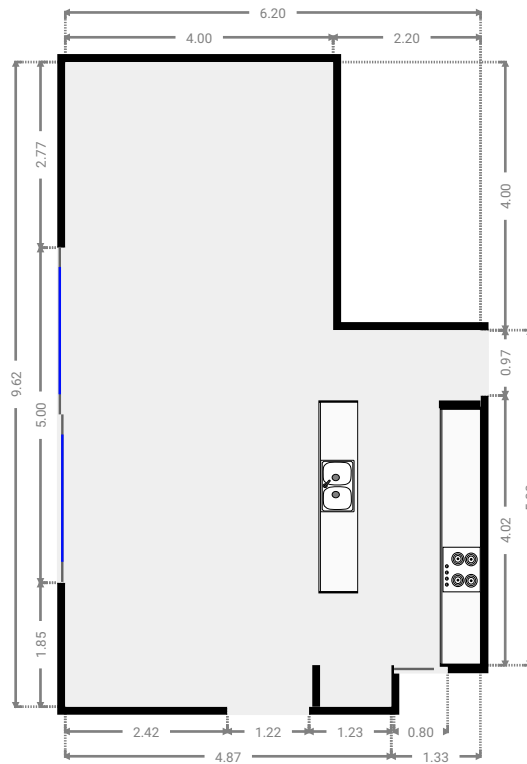
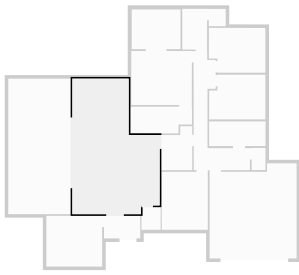
▼ **Closet**  
Ground Floor

WIDTH: 1.36 m • LENGTH: 1.61 m  
AREA: 2.19 m<sup>2</sup> • PERIMETER: 5.94 m



▼ Living Room  
Ground Floor

WIDTH: 6.20 m • LENGTH: 9.62 m  
AREA: 49.99 m<sup>2</sup> • PERIMETER: 31.63 m



▼ Living Room  
Ground Floor

WIDTH: 3.96 m • LENGTH: 3.60 m  
AREA: 14.26 m<sup>2</sup> • PERIMETER: 15.12 m

