

# 10 Stan Jones Court

**SUBMITTED BY**

Ray White Rockhampton Casey  
stockers@cqoz.com

---

**CREATED ON**

2022-06-27

---

**Floors**

1

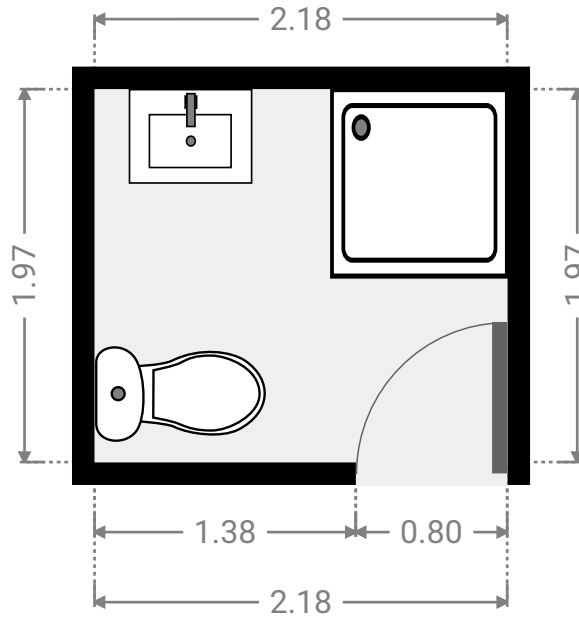
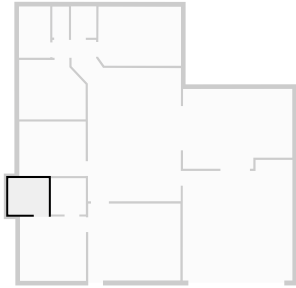
---

## ▼ Ground Floor



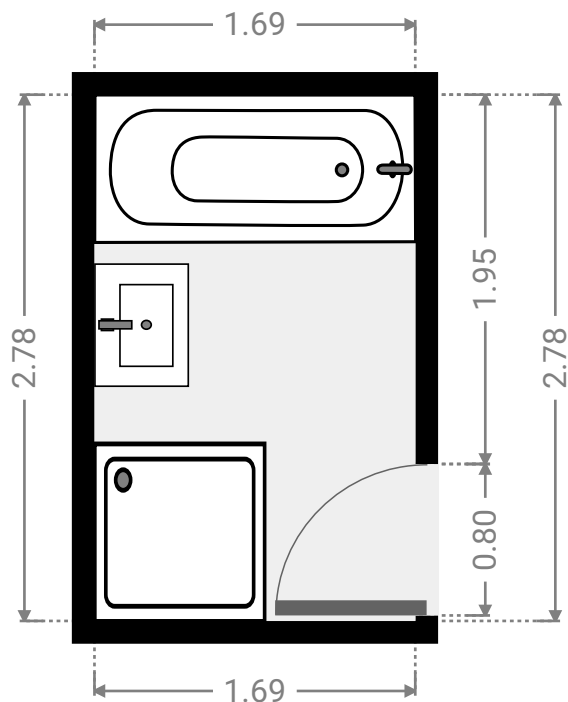
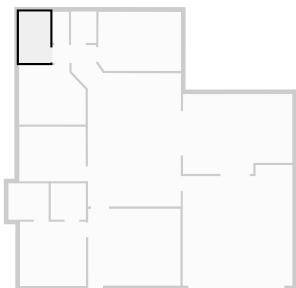
▼ **Bathroom**  
Ground Floor

WIDTH: 2.18 m • LENGTH: 1.97 m  
AREA: 4.29 m<sup>2</sup> • PERIMETER: 8.30 m



▼ **Bathroom**  
Ground Floor

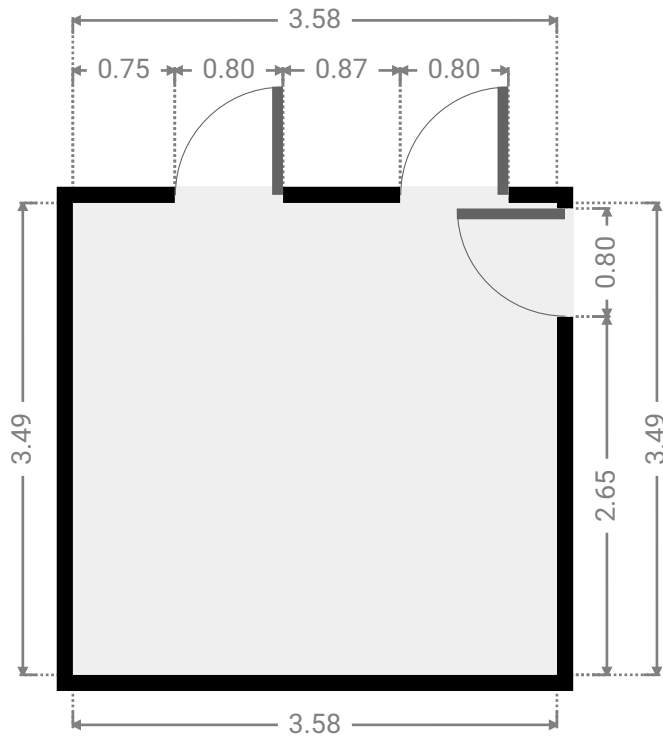
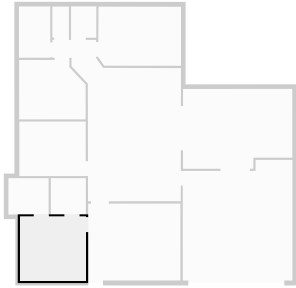
WIDTH: 1.69 m • LENGTH: 2.78 m  
AREA: 4.71 m<sup>2</sup> • PERIMETER: 8.95 m



FLOORS: 1

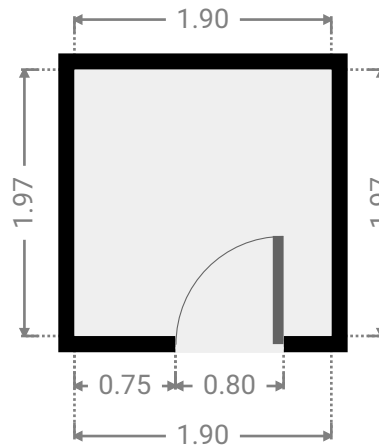
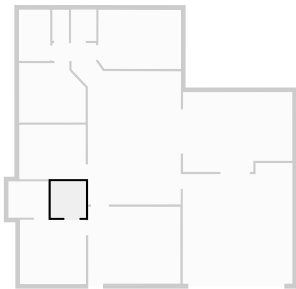
▼ **Bedroom**  
Ground Floor

WIDTH: 3.58 m • LENGTH: 3.49 m  
AREA: 12.49 m<sup>2</sup> • PERIMETER: 14.14 m



▼ **Closet**  
Ground Floor

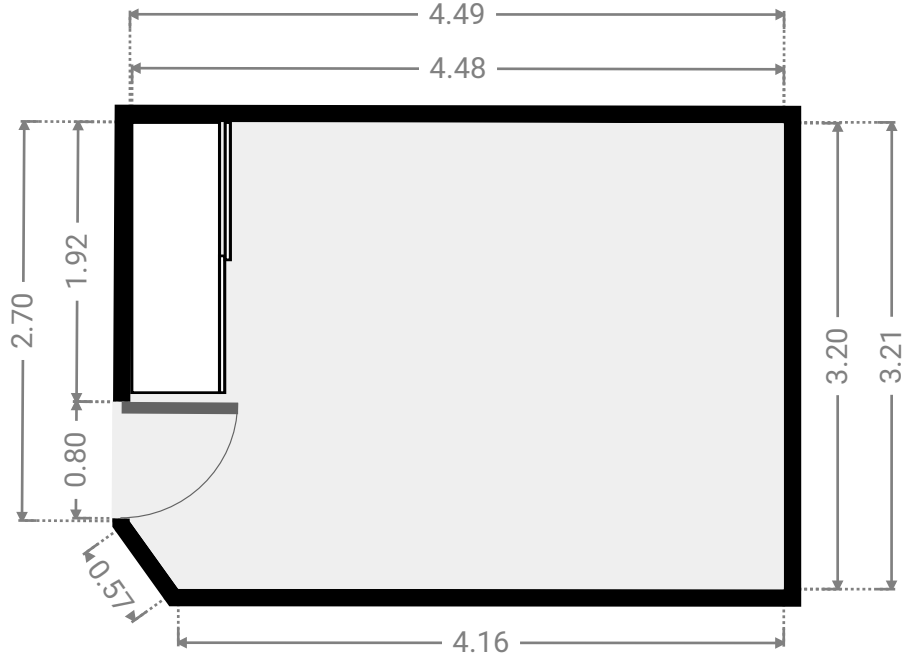
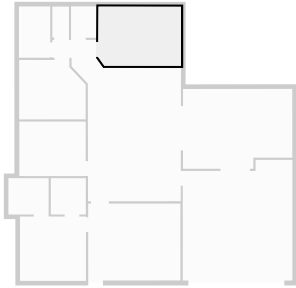
WIDTH: 1.90 m • LENGTH: 1.97 m  
AREA: 3.74 m<sup>2</sup> • PERIMETER: 7.74 m



FLOORS: 1

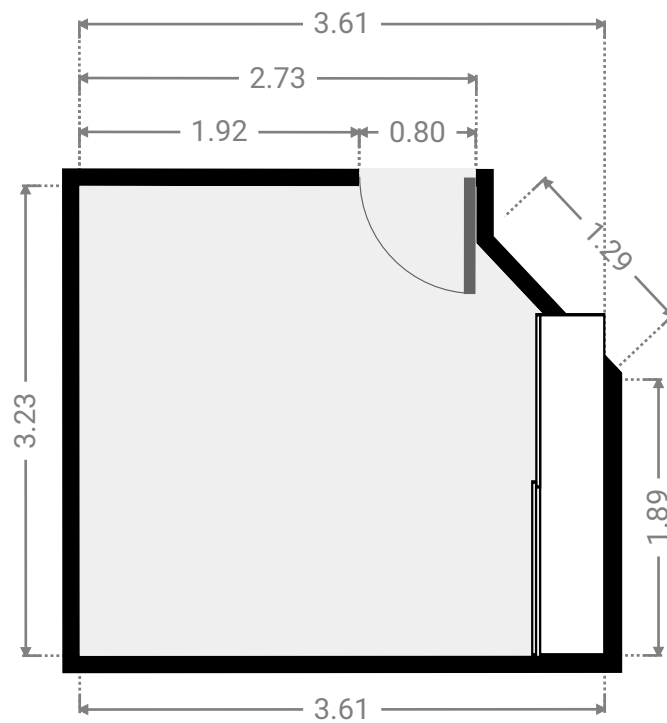
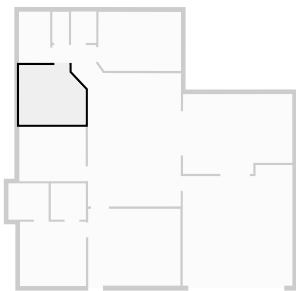
▼ **Bedroom**  
Ground Floor

WIDTH: 4.49 m • LENGTH: 3.21 m  
AREA: 14.29 m<sup>2</sup> • PERIMETER: 15.15 m



▼ **Bedroom**  
Ground Floor

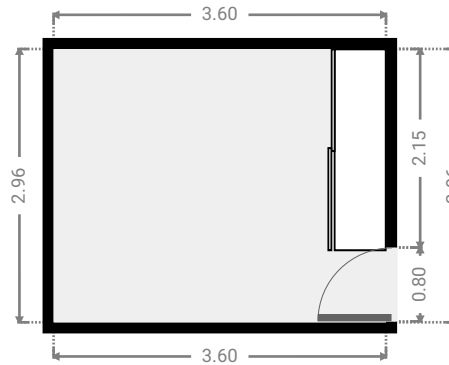
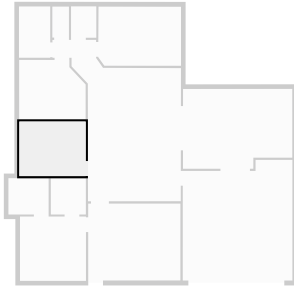
WIDTH: 3.61 m • LENGTH: 3.23 m  
AREA: 10.87 m<sup>2</sup> • PERIMETER: 13.13 m



FLOORS: 1

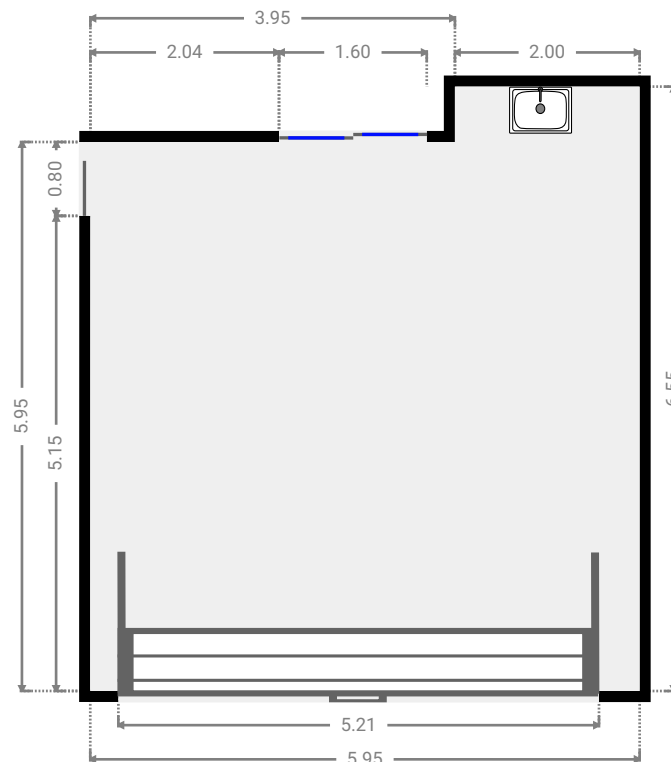
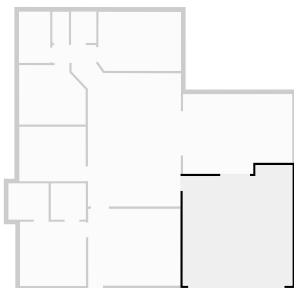
▼ **Bedroom**  
Ground Floor

WIDTH: 3.60 m • LENGTH: 2.96 m  
AREA: 10.66 m<sup>2</sup> • PERIMETER: 13.12 m



▼ **Garage**  
Ground Floor

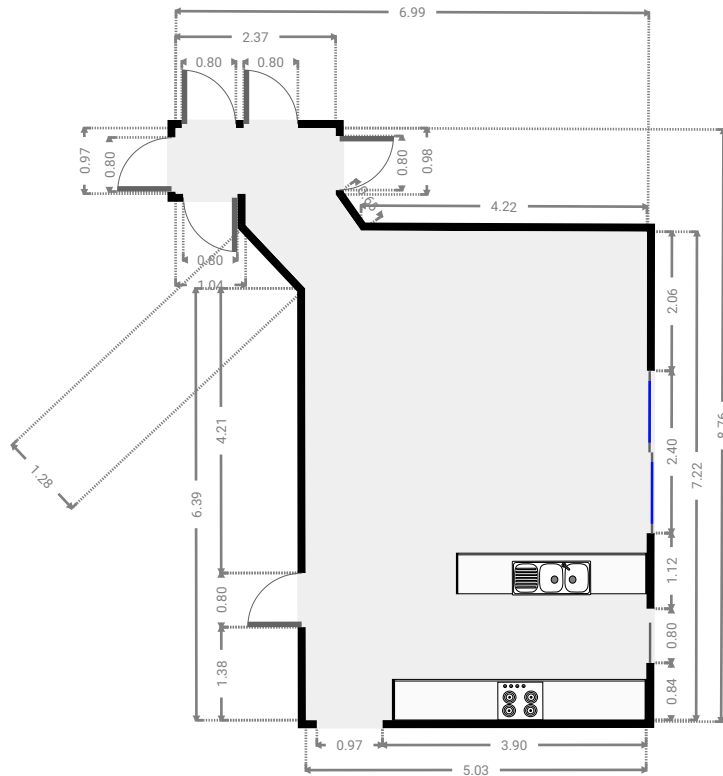
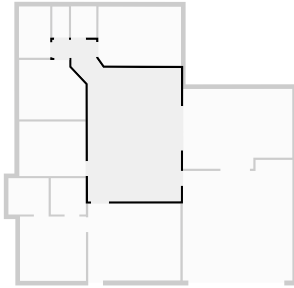
WIDTH: 5.95 m • LENGTH: 6.55 m  
AREA: 36.57 m<sup>2</sup> • PERIMETER: 24.99 m



FLOORS: 1

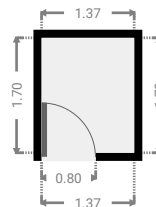
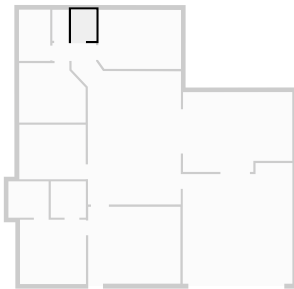
**▼ Kitchen**  
Ground Floor

WIDTH: 6.99 m • LENGTH: 8.76 m  
AREA: 39.95 m<sup>2</sup> • PERIMETER: 30.63 m



**▼ Closet**  
Ground Floor

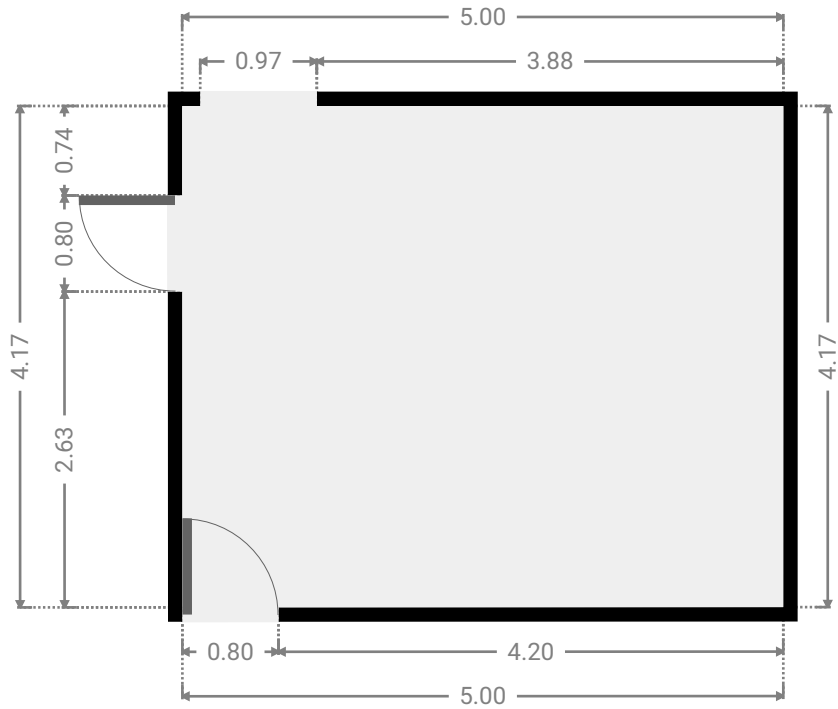
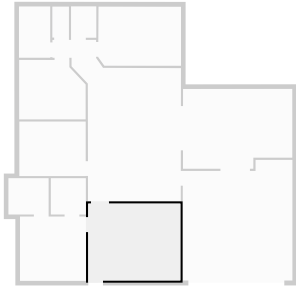
WIDTH: 1.37 m • LENGTH: 1.70 m  
AREA: 2.33 m<sup>2</sup> • PERIMETER: 6.14 m



FLOORS: 1

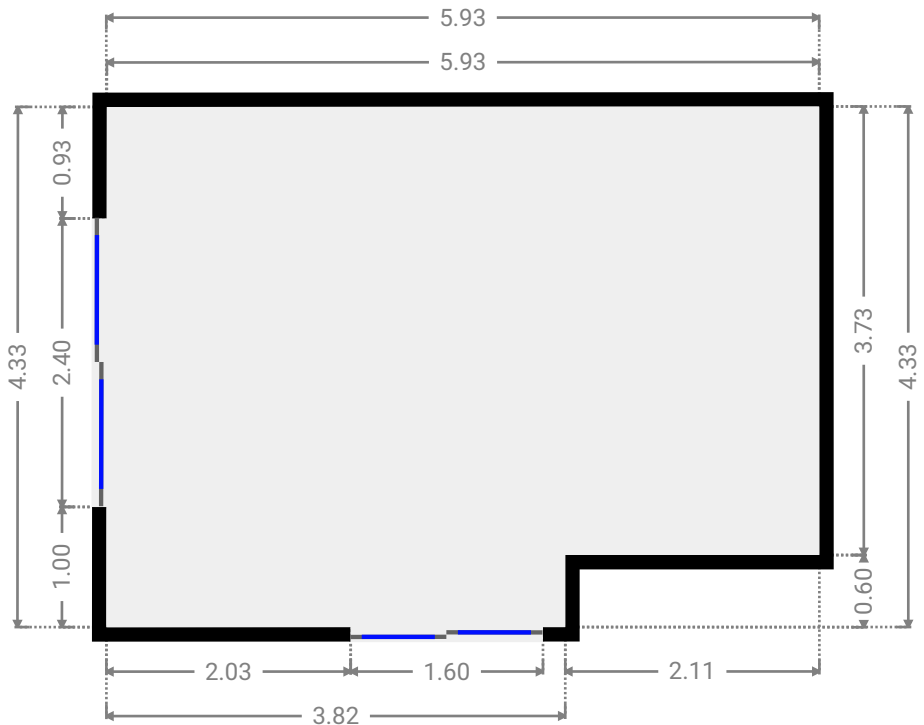
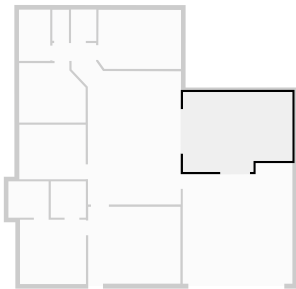
▼ **Living Room**  
Ground Floor

WIDTH: 5.00 m • LENGTH: 4.17 m  
AREA: 20.86 m<sup>2</sup> • PERIMETER: 18.34 m



▼ **Other**  
Ground Floor

WIDTH: 5.93 m • LENGTH: 4.33 m  
AREA: 24.40 m<sup>2</sup> • PERIMETER: 20.52 m





## ▼ Toilet Ground Floor

WIDTH: 0.90 m • LENGTH: 1.68 m  
AREA: 1.51 m<sup>2</sup> • PERIMETER: 5.16 m

