

10 Skinner Drive

Created on
2021-01-21

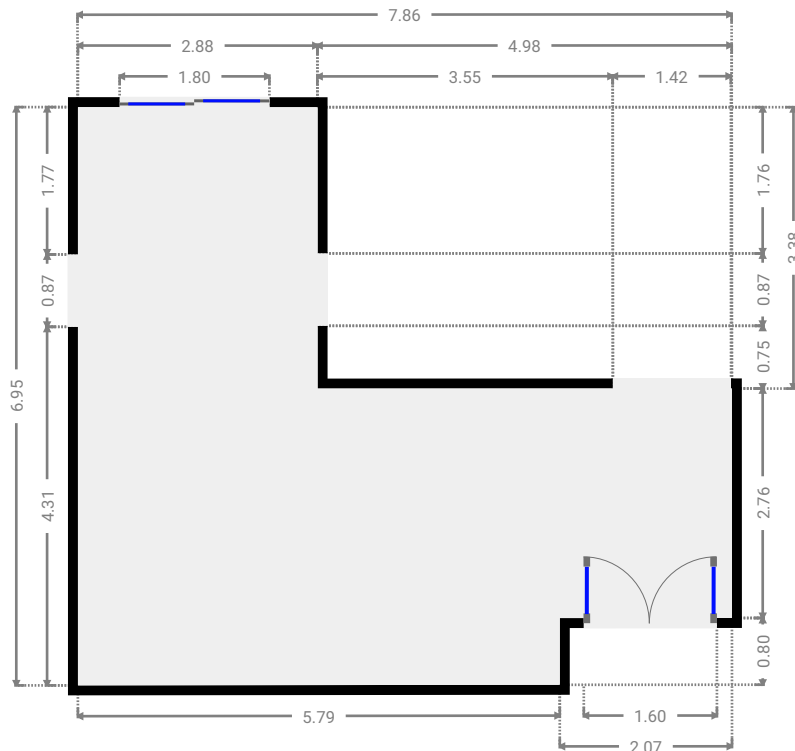
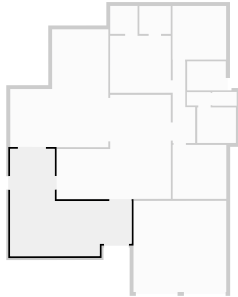
Floors
1

▼ Ground Floor



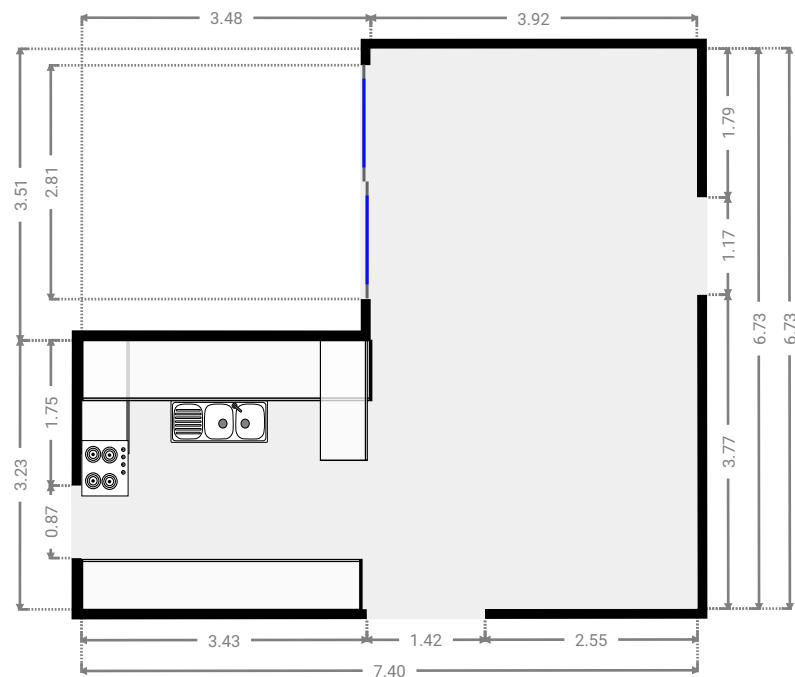
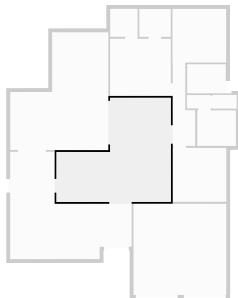
▼ Living Room
Ground Floor

WIDTH: 7.86 m • LENGTH: 6.95 m
AREA: 36.09 m² • PERIMETER: 29.61 m



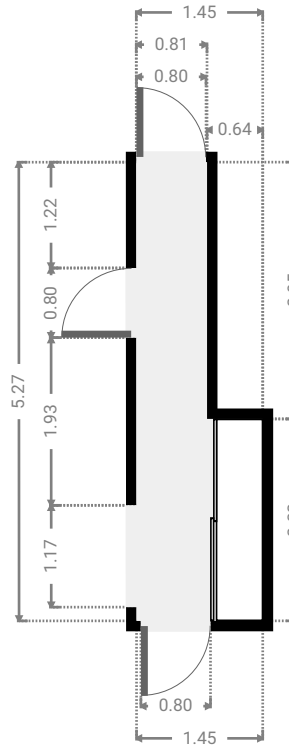
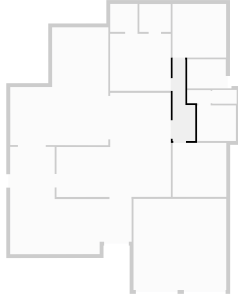
▼ Kitchen
Ground Floor

WIDTH: 7.40 m • LENGTH: 6.73 m
AREA: 37.64 m² • PERIMETER: 28.27 m



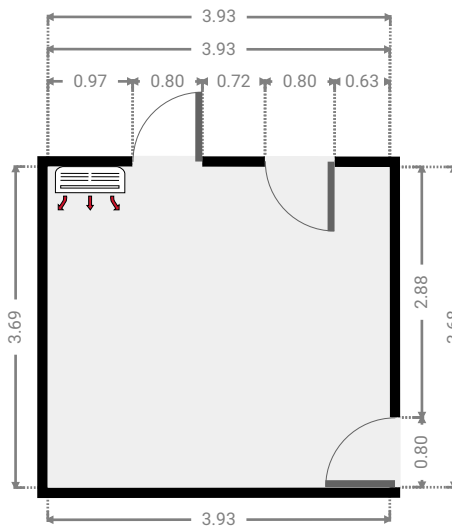
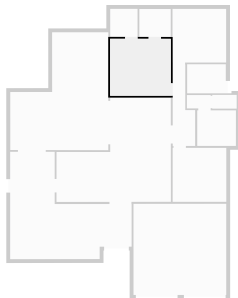
▼ Closet
Ground Floor

WIDTH: 1.45 m • LENGTH: 5.27 m
AREA: 5.76 m² • PERIMETER: 13.44 m



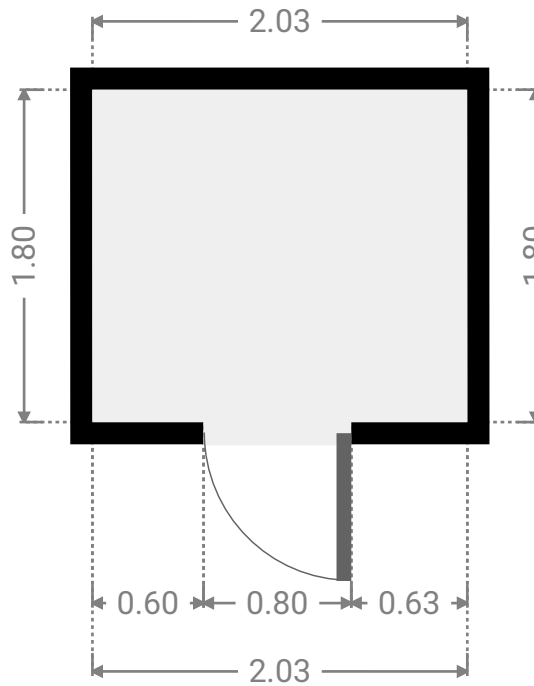
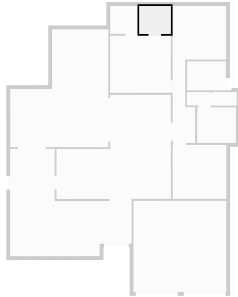
▼ Master Bedroom
Ground Floor

WIDTH: 3.93 m • LENGTH: 3.69 m
AREA: 14.47 m² • PERIMETER: 15.23 m



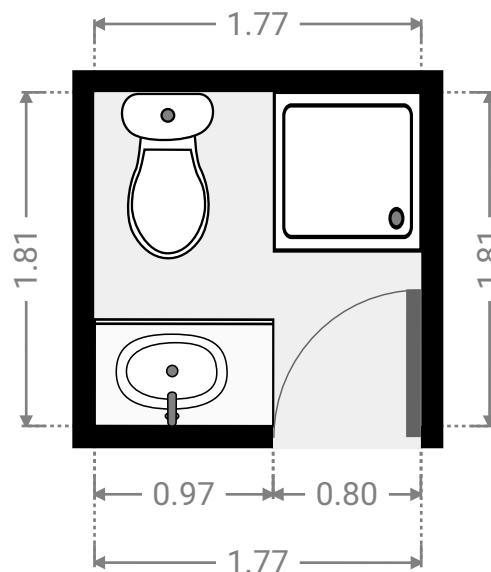
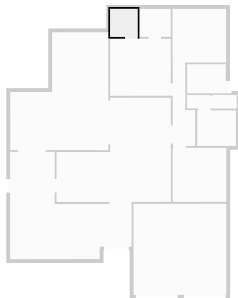
▼ Closet Ground Floor

WIDTH: 2.03 m • LENGTH: 1.80 m
AREA: 3.65 m² • PERIMETER: 7.66 m



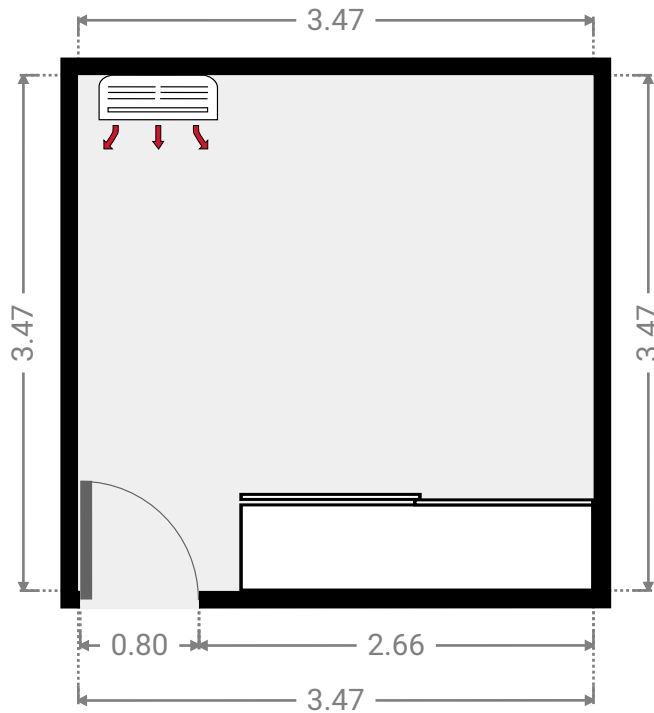
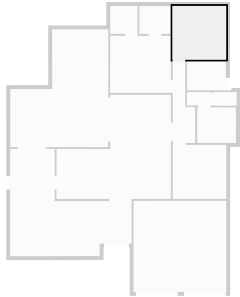
▼ Bathroom Ground Floor

WIDTH: 1.77 m • LENGTH: 1.81 m
AREA: 3.20 m² • PERIMETER: 7.15 m



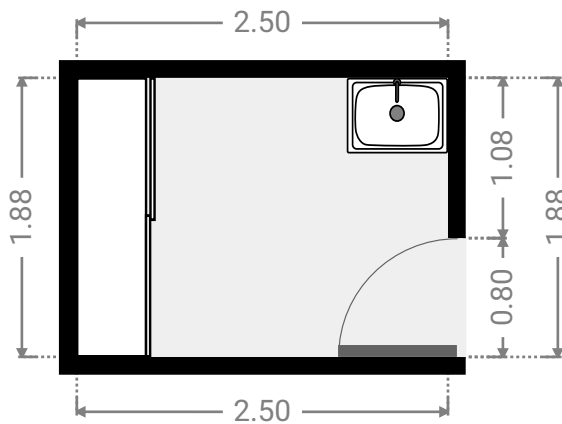
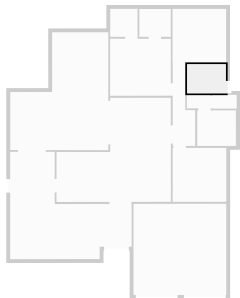
▼ **Bedroom**
Ground Floor

WIDTH: 3.47 m • LENGTH: 3.47 m
AREA: 12.04 m² • PERIMETER: 13.88 m



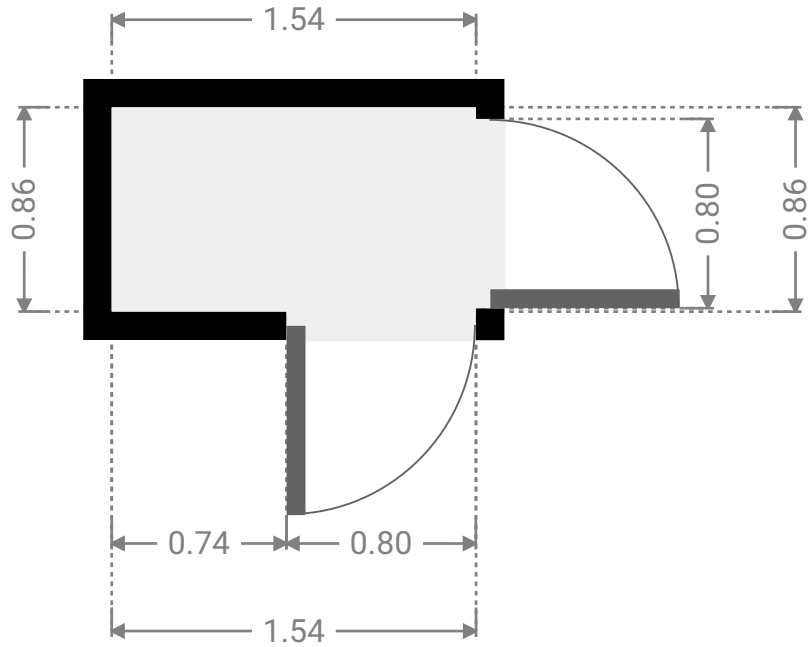
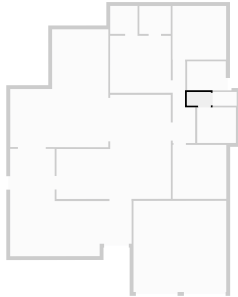
▼ **Laundry Room**
Ground Floor

WIDTH: 2.50 m • LENGTH: 1.88 m
AREA: 4.70 m² • PERIMETER: 8.76 m



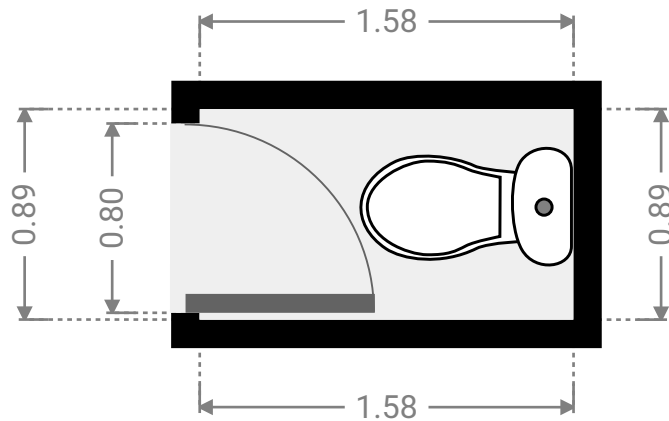
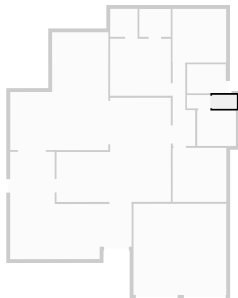
▼ **Hall**
Ground Floor

WIDTH: 1.54 m • LENGTH: 0.86 m
AREA: 1.33 m² • PERIMETER: 4.81 m



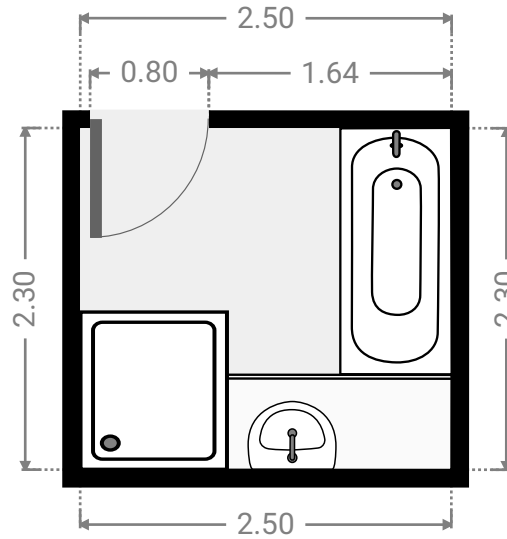
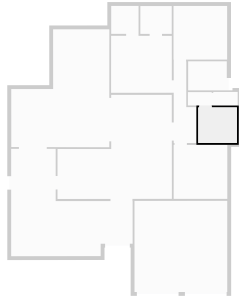
▼ **Toilet**
Ground Floor

WIDTH: 1.58 m • LENGTH: 0.89 m
AREA: 1.41 m² • PERIMETER: 4.94 m



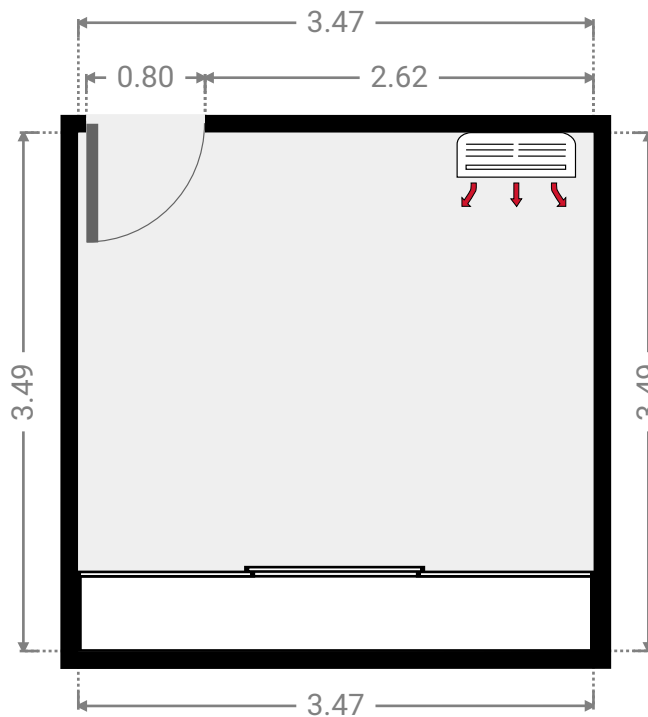
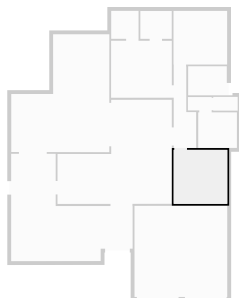
▼ **Bathroom**
Ground Floor

WIDTH: 2.50 m • LENGTH: 2.30 m
AREA: 5.75 m² • PERIMETER: 9.60 m



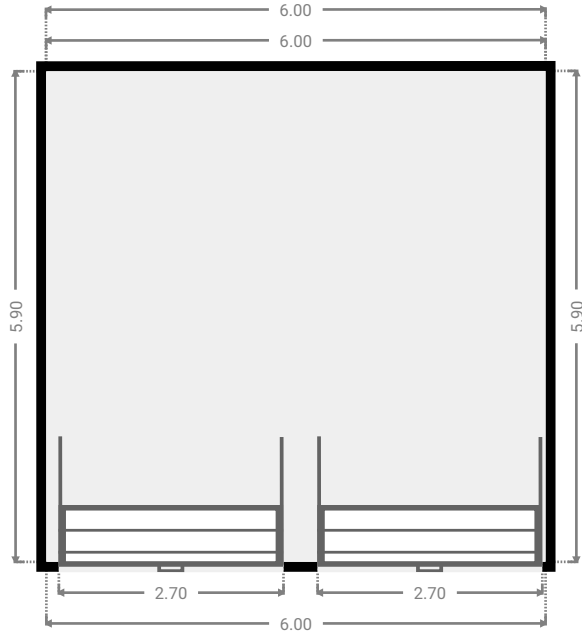
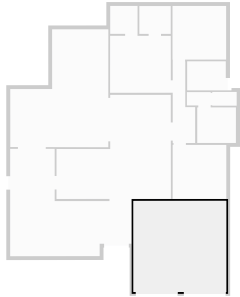
▼ **Bedroom**
Ground Floor

WIDTH: 3.47 m • LENGTH: 3.49 m
AREA: 12.11 m² • PERIMETER: 13.92 m



▼ Garage Ground Floor

WIDTH: 6.00 m • LENGTH: 5.90 m
AREA: 35.40 m² • PERIMETER: 23.80 m



▼ Other Ground Floor

WIDTH: 6.35 m • LENGTH: 7.63 m
AREA: 37.92 m² • PERIMETER: 27.94 m

