

# 10 Reece Jones Court

**SUBMITTED BY**

Ray White Rockhampton Casey  
stockers@cqoz.com

---

**CREATED ON**

2022-04-22

---

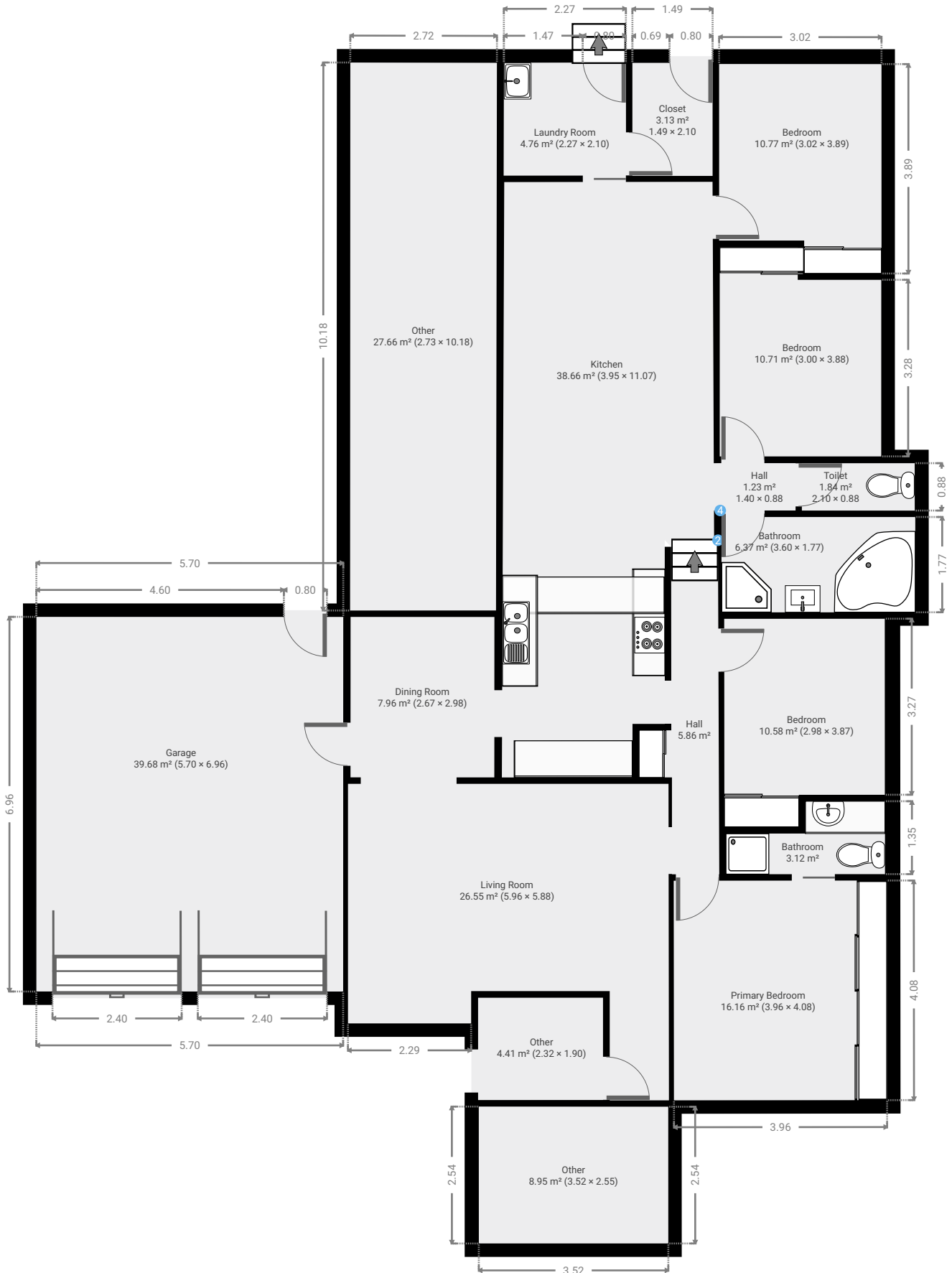
**Floors**

1

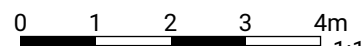
---

FLOORS: 1

## ▼ Ground Floor



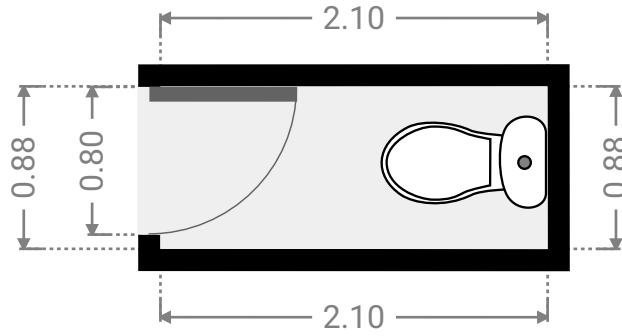
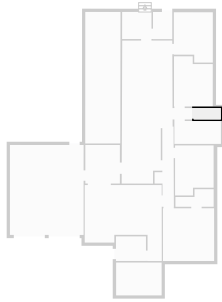
THIS FLOORPLAN IS PROVIDED WITHOUT WARRANTY OF ANY KIND. SENSOPIA DISCLAIMS ANY WARRANTY INCLUDING, WITHOUT LIMITATION, SATISFACTORY QUALITY OR ACCURACY OF DIMENSIONS.



FLOORS: 1

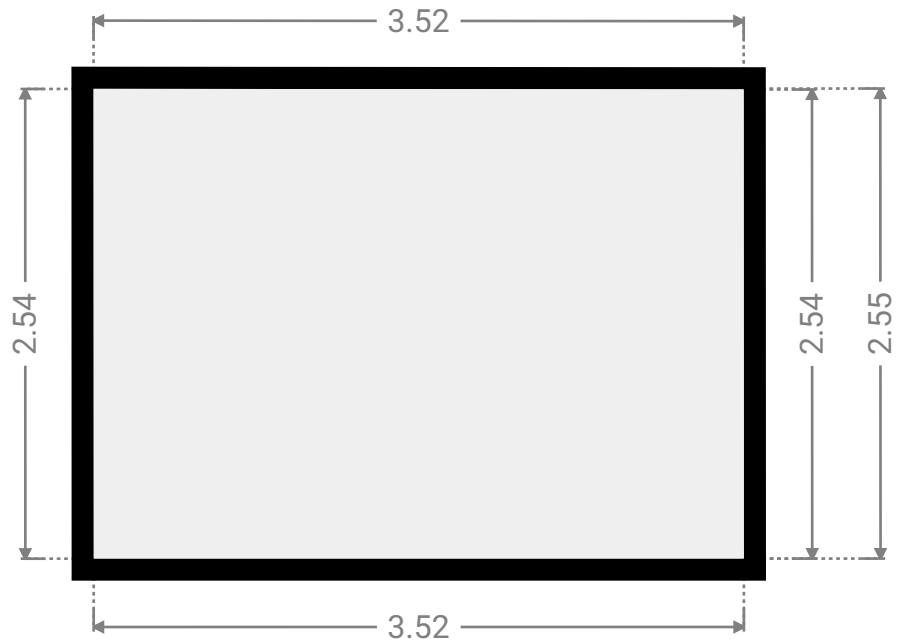
▼ Toilet  
Ground Floor

WIDTH: 2.10 m • LENGTH: 0.88 m  
AREA: 1.84 m<sup>2</sup> • PERIMETER: 5.95 m



▼ Other  
Ground Floor

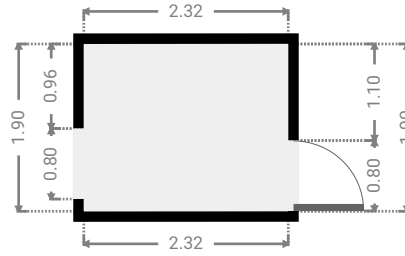
WIDTH: 3.52 m • LENGTH: 2.55 m  
AREA: 8.95 m<sup>2</sup> • PERIMETER: 12.12 m



FLOORS: 1

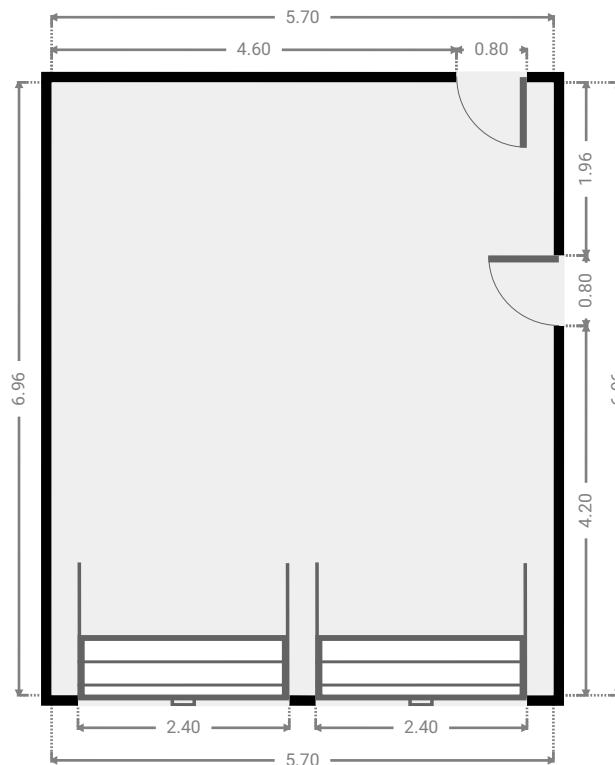
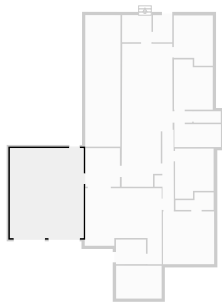
## ▼ Other Ground Floor

WIDTH: 2.32 m • LENGTH: 1.90 m  
AREA: 4.41 m<sup>2</sup> • PERIMETER: 8.44 m



## ▼ Garage Ground Floor

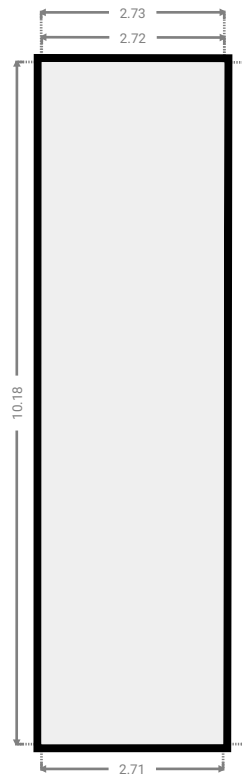
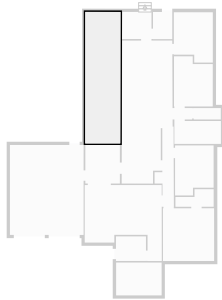
WIDTH: 5.70 m • LENGTH: 6.96 m  
AREA: 39.68 m<sup>2</sup> • PERIMETER: 25.32 m



FLOORS: 1

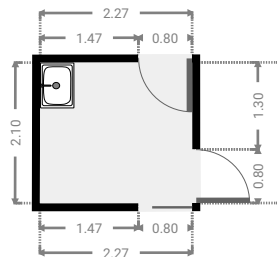
## ▼ Other Ground Floor

WIDTH: 2.73 m • LENGTH: 10.18 m  
AREA: 27.66 m<sup>2</sup> • PERIMETER: 25.79 m



## ▼ Laundry Room Ground Floor

WIDTH: 2.27 m • LENGTH: 2.10 m  
AREA: 4.76 m<sup>2</sup> • PERIMETER: 8.74 m

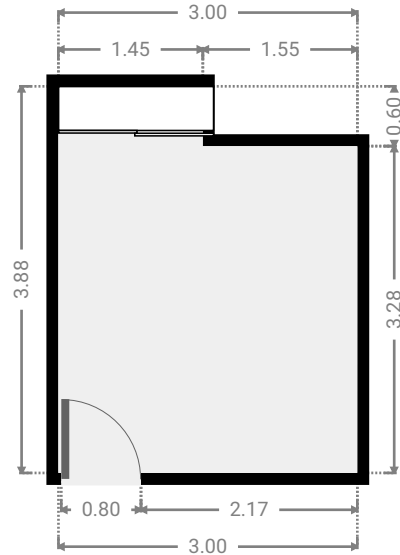
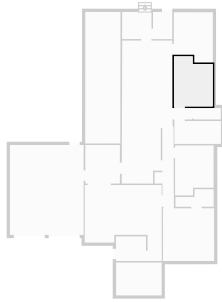




FLOORS: 1

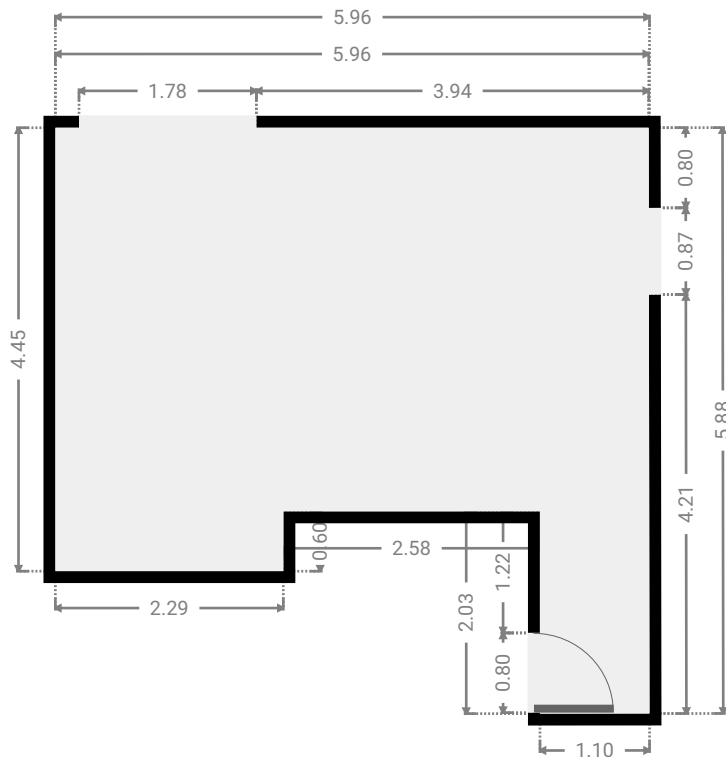
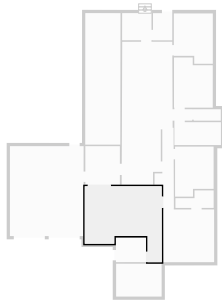
## ▼ Bedroom Ground Floor

WIDTH: 3.00 m • LENGTH: 3.88 m  
AREA: 10.71 m<sup>2</sup> • PERIMETER: 13.76 m



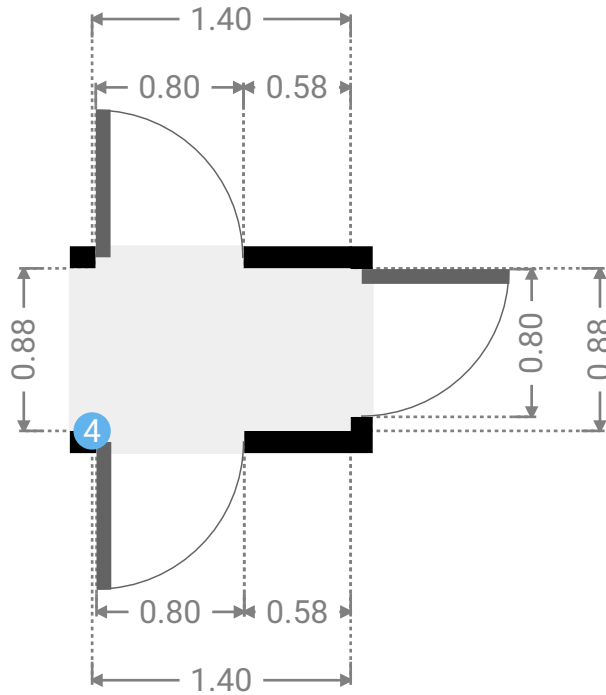
## ▼ Living Room Ground Floor

WIDTH: 5.96 m • LENGTH: 5.88 m  
AREA: 26.55 m<sup>2</sup> • PERIMETER: 24.88 m



## ▼ Hall Ground Floor

WIDTH: 1.40 m • LENGTH: 0.88 m  
AREA: 1.23 m<sup>2</sup> • PERIMETER: 4.56 m



## ▼ Hall/Ground Floor

### 4 OPENING

Height  
0.00 m

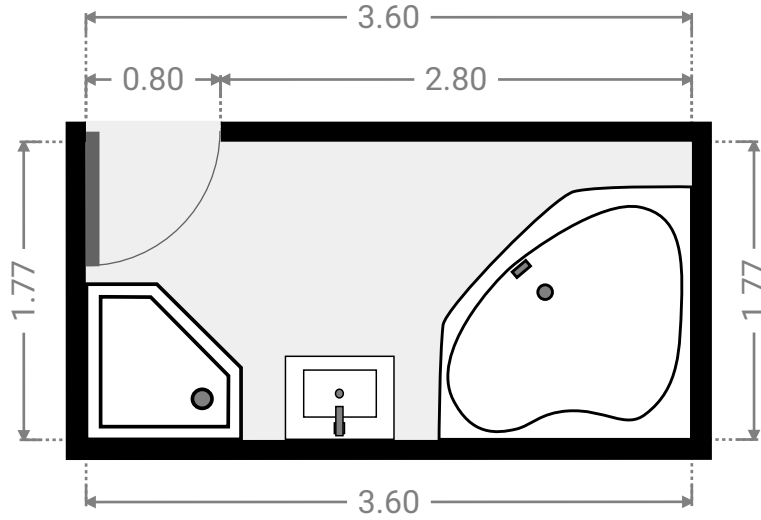
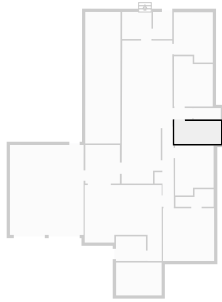




FLOORS: 1

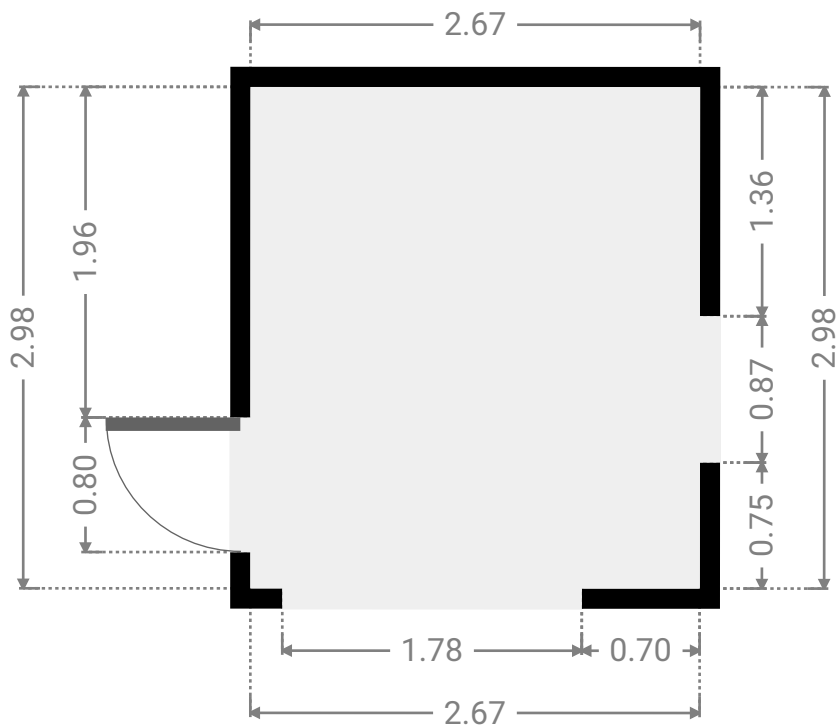
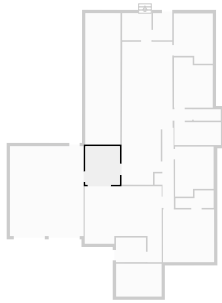
▼ **Bathroom**  
Ground Floor

WIDTH: 3.60 m • LENGTH: 1.77 m  
AREA: 6.37 m<sup>2</sup> • PERIMETER: 10.74 m



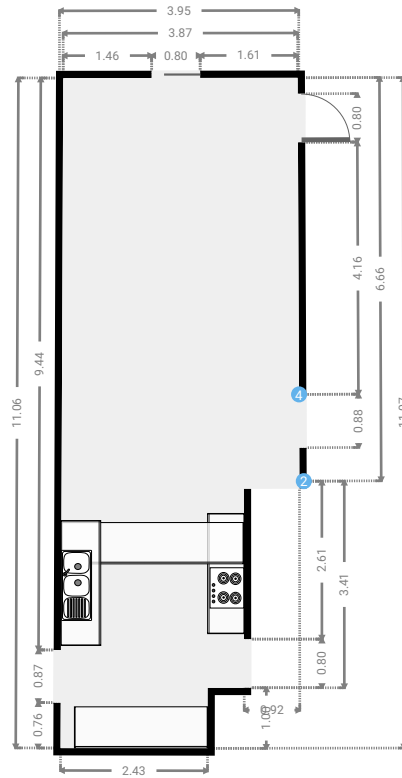
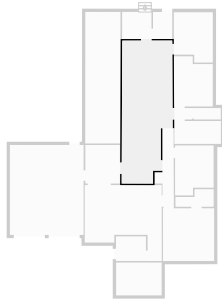
▼ **Dining Room**  
Ground Floor

WIDTH: 2.67 m • LENGTH: 2.98 m  
AREA: 7.96 m<sup>2</sup> • PERIMETER: 11.30 m



## ▼ Kitchen Ground Floor

WIDTH: 3.95 m • LENGTH: 11.07 m  
AREA: 38.66 m<sup>2</sup> • PERIMETER: 29.94 m



## ▼ Kitchen/Ground Floor

### 2 OPENING

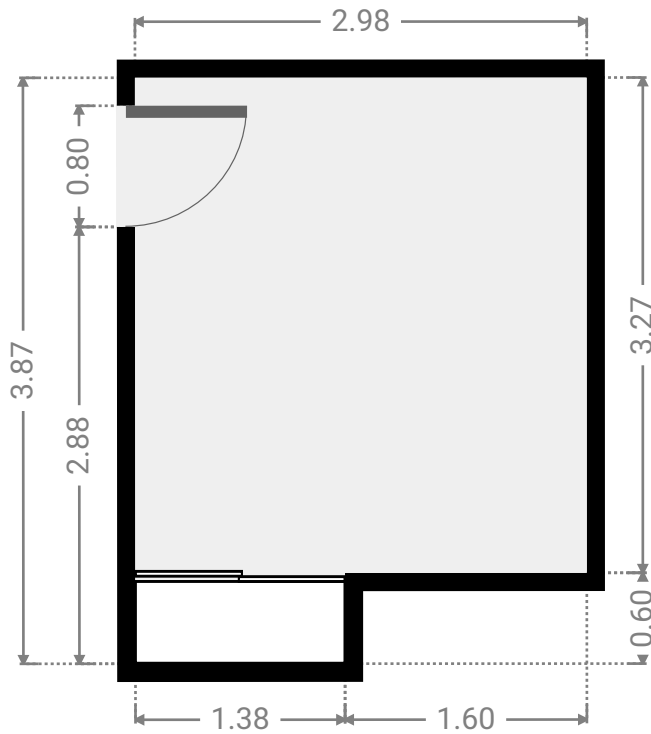
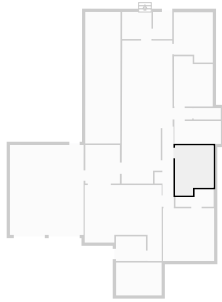
Height  
0.00 m



FLOORS: 1

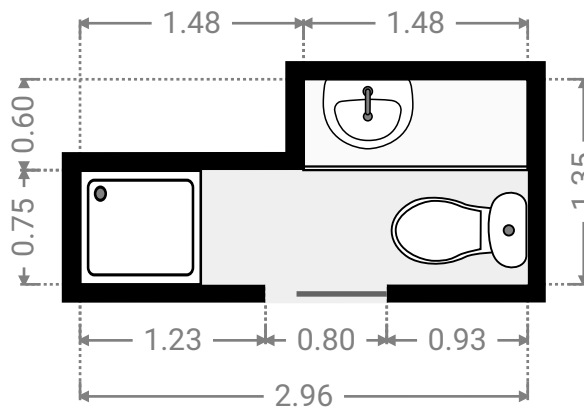
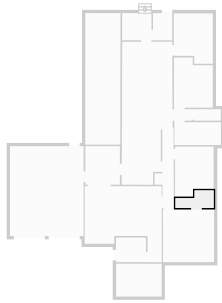
▼ **Bedroom**  
Ground Floor

WIDTH: 2.98 m • LENGTH: 3.87 m  
AREA: 10.58 m<sup>2</sup> • PERIMETER: 13.70 m



▼ **Bathroom**  
Ground Floor

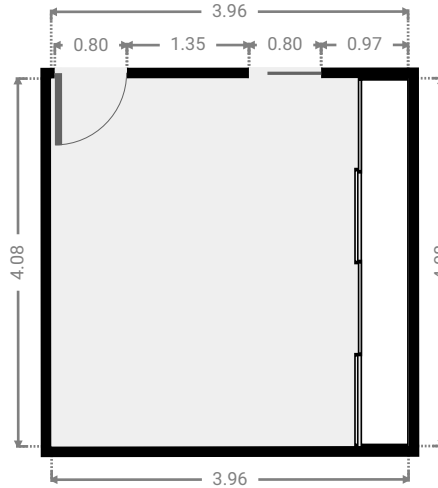
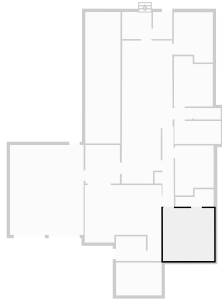
WIDTH: 2.96 m • LENGTH: 1.35 m  
AREA: 3.12 m<sup>2</sup> • PERIMETER: 8.62 m



FLOORS: 1

▼ **Primary Bedroom**  
Ground Floor

WIDTH: 3.96 m • LENGTH: 4.08 m  
AREA: 16.16 m<sup>2</sup> • PERIMETER: 16.08 m



▼ **Hall**  
Ground Floor

WIDTH: 1.49 m • LENGTH: 6.08 m  
AREA: 5.86 m<sup>2</sup> • PERIMETER: 15.13 m

