

# 10 Jardine Court

**SUBMITTED BY**

Ray White Rockhampton Casey  
stockers@cqoz.com

---

**CREATED ON**

2022-08-17

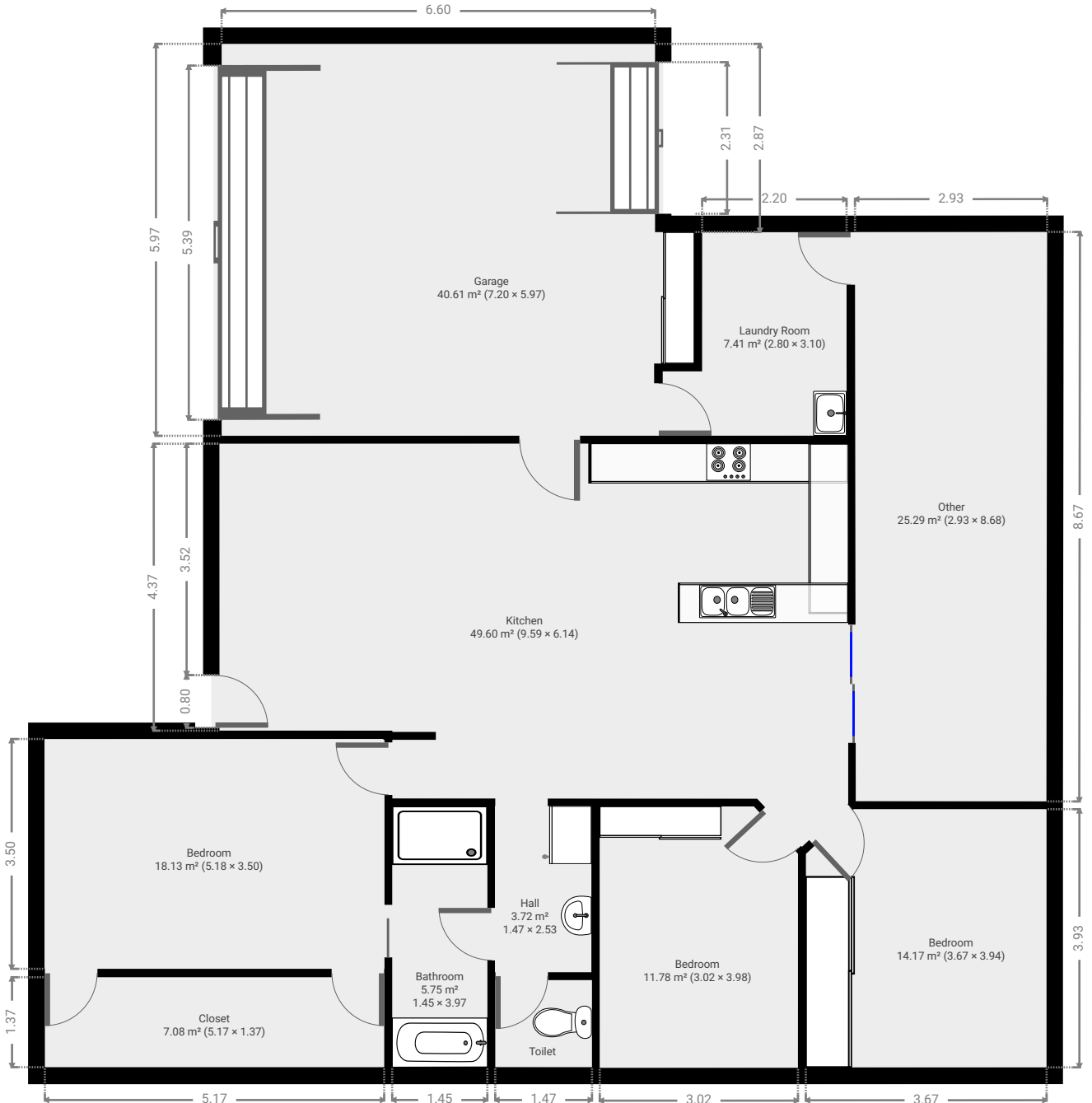
---

**Floors**

1

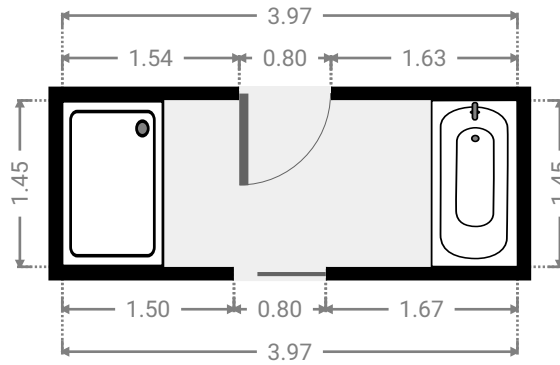
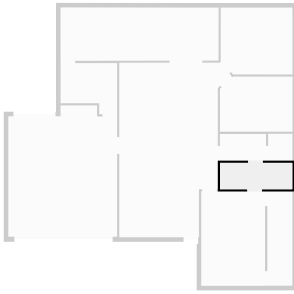
---

## ▼ Ground Floor



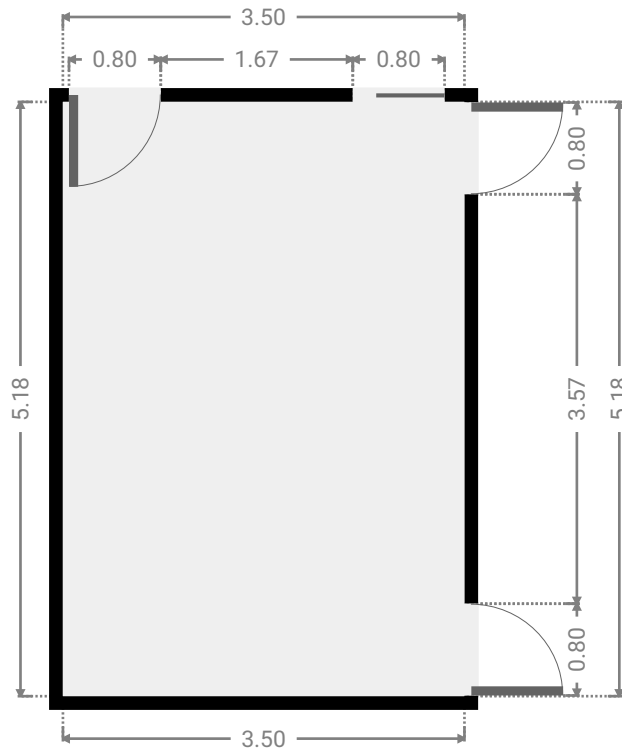
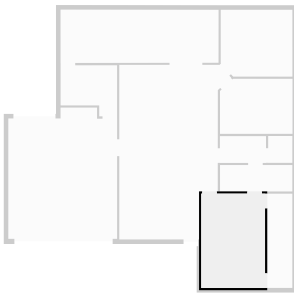
▼ **Bathroom**  
Ground Floor

WIDTH: 3.97 m • LENGTH: 1.45 m  
AREA: 5.75 m<sup>2</sup> • PERIMETER: 10.83 m



▼ **Bedroom**  
Ground Floor

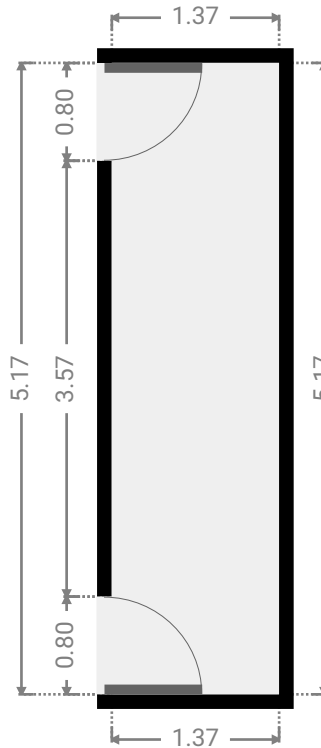
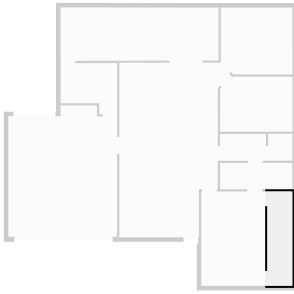
WIDTH: 3.50 m • LENGTH: 5.18 m  
AREA: 18.13 m<sup>2</sup> • PERIMETER: 17.36 m



FLOORS: 1

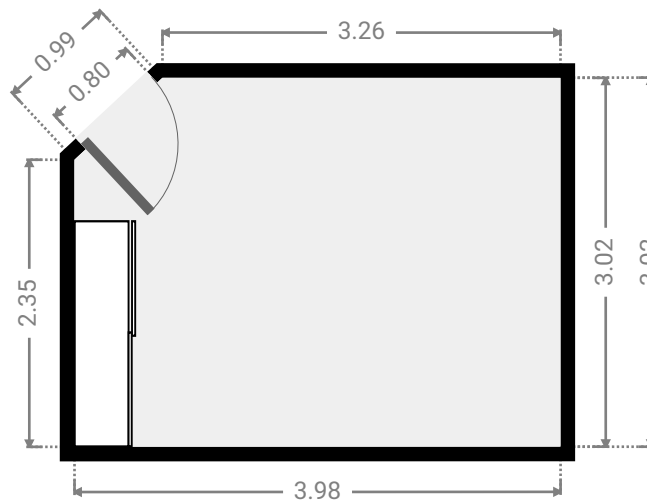
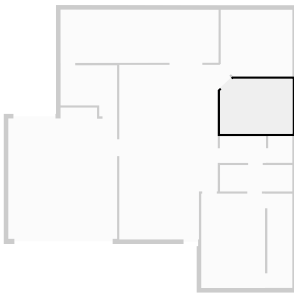
▼ Closet  
Ground Floor

WIDTH: 1.37 m • LENGTH: 5.17 m  
AREA: 7.08 m<sup>2</sup> • PERIMETER: 13.08 m



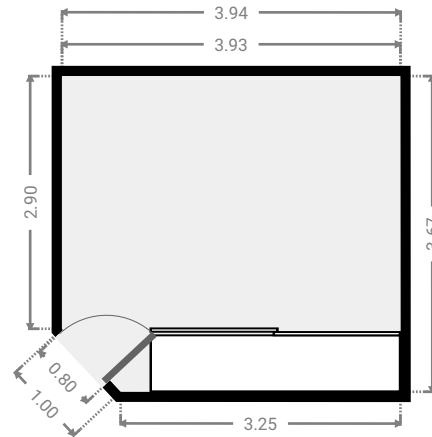
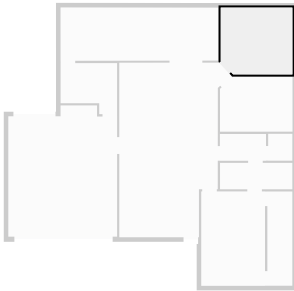
▼ Bedroom  
Ground Floor

WIDTH: 3.98 m • LENGTH: 3.02 m  
AREA: 11.78 m<sup>2</sup> • PERIMETER: 13.60 m



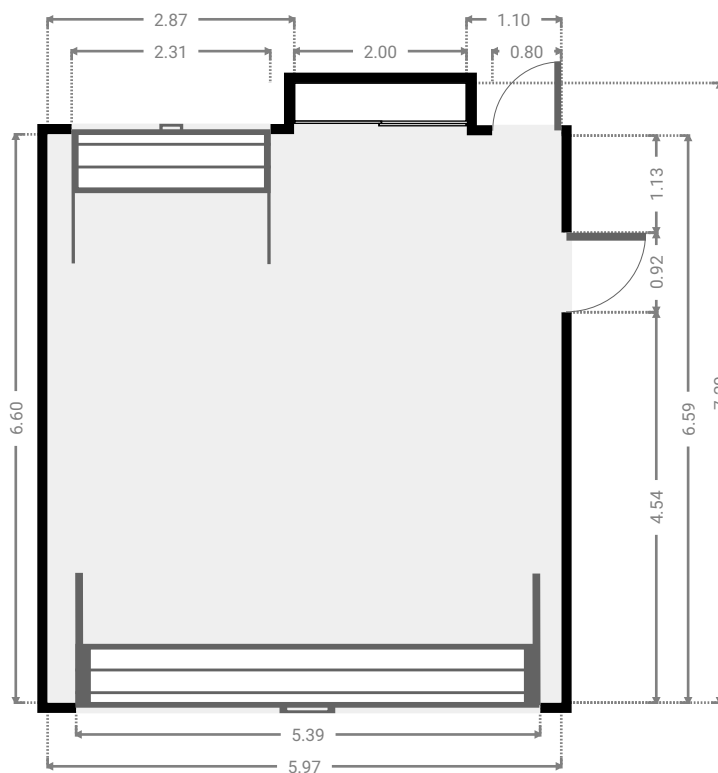
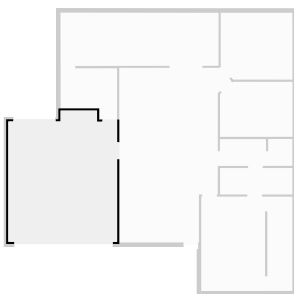
## ▼ Bedroom Ground Floor

WIDTH: 3.94 m • LENGTH: 3.67 m  
AREA: 14.17 m<sup>2</sup> • PERIMETER: 14.79 m



## ▼ Garage Ground Floor

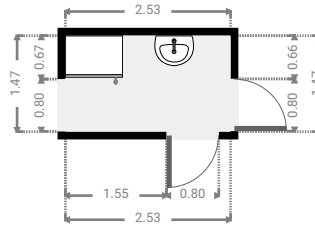
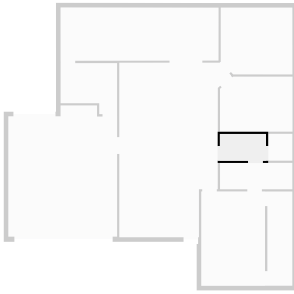
WIDTH: 5.97 m • LENGTH: 7.20 m  
AREA: 40.61 m<sup>2</sup> • PERIMETER: 26.34 m



FLOORS: 1

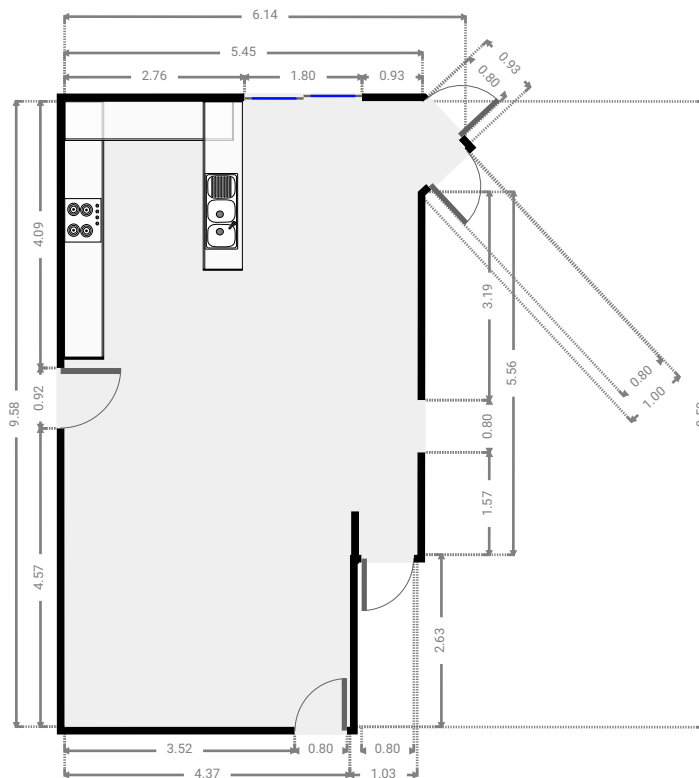
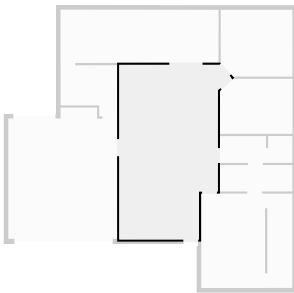
## ▼ Hall Ground Floor

WIDTH: 2.53 m • LENGTH: 1.47 m  
AREA: 3.72 m<sup>2</sup> • PERIMETER: 8.00 m



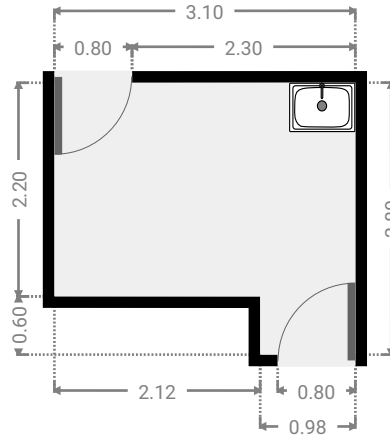
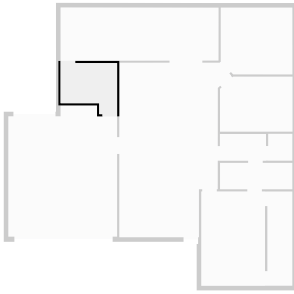
## ▼ Kitchen Ground Floor

WIDTH: 6.14 m • LENGTH: 9.59 m  
AREA: 49.60 m<sup>2</sup> • PERIMETER: 30.62 m



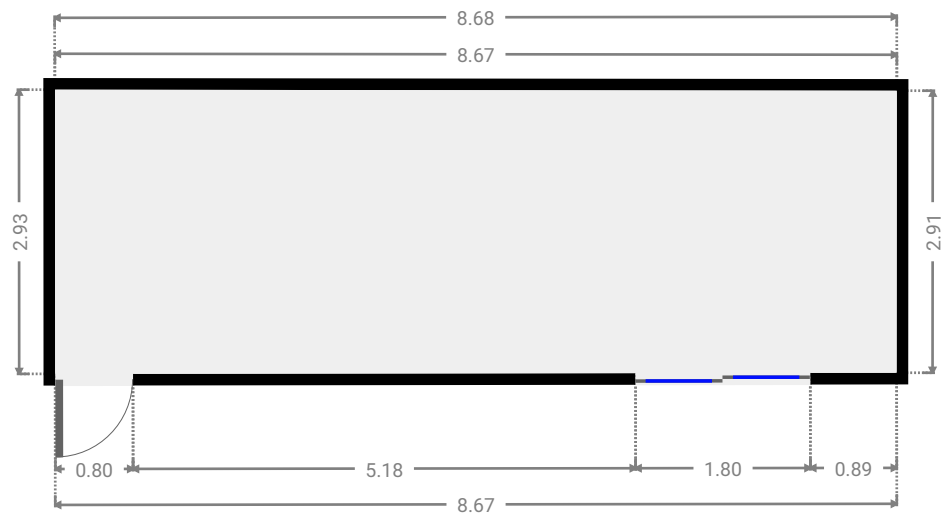
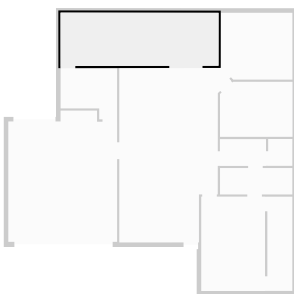
## ▼ Laundry Room Ground Floor

WIDTH: 3.10 m • LENGTH: 2.80 m  
AREA: 7.41 m<sup>2</sup> • PERIMETER: 11.80 m



## ▼ Other Ground Floor

WIDTH: 8.68 m • LENGTH: 2.93 m  
AREA: 25.29 m<sup>2</sup> • PERIMETER: 23.18 m



▼ Toilet  
Ground Floor

WIDTH: 1.33 m • LENGTH: 1.47 m  
AREA: 1.95 m<sup>2</sup> • PERIMETER: 5.60 m

