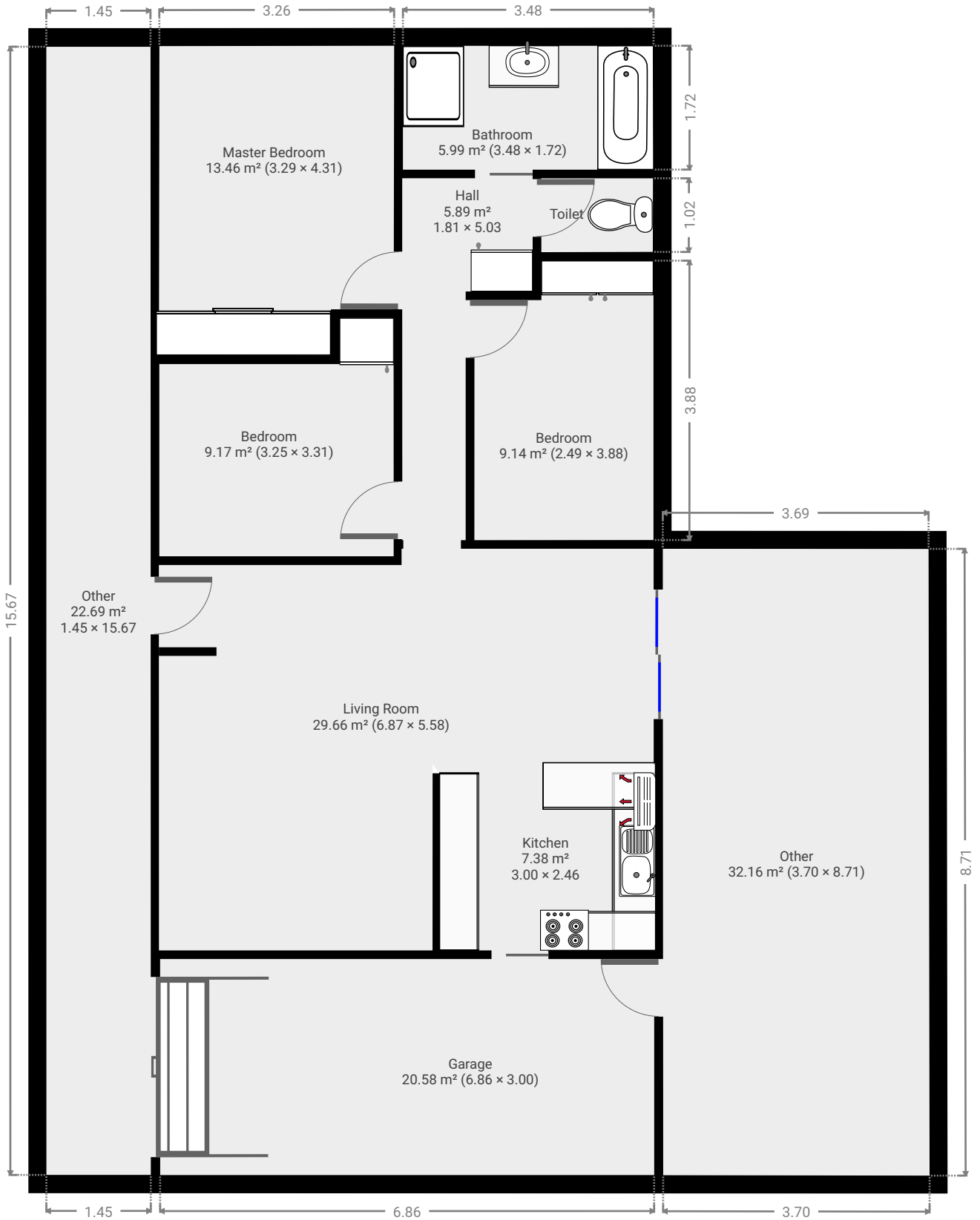


10 Ingham Street

Created on
2021-05-06

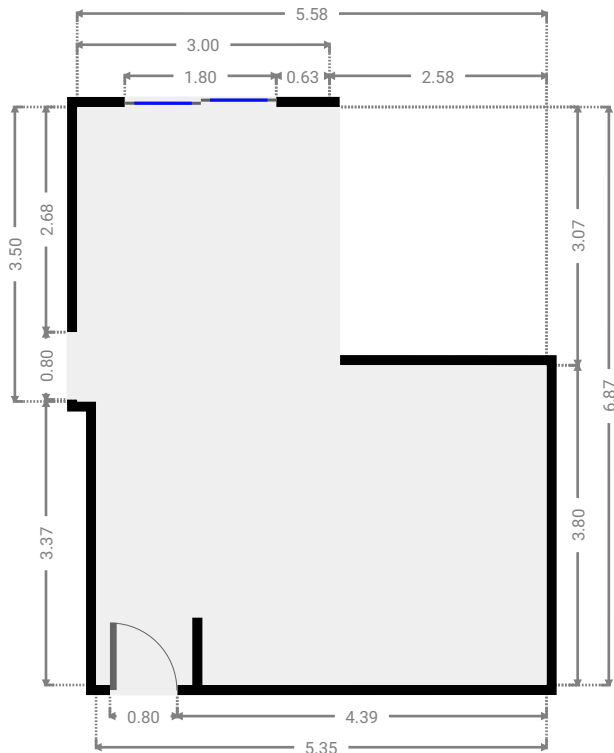
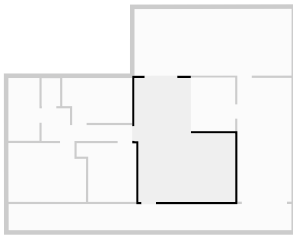
Floors
1

▼ Ground Floor



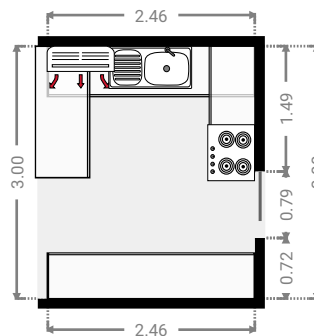
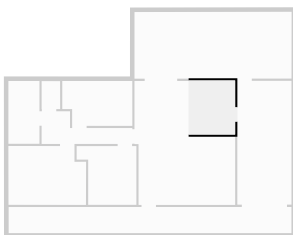
▼ **Living Room**
Ground Floor

WIDTH: 5.58 m • LENGTH: 6.87 m
AREA: 29.66 m² • PERIMETER: 24.90 m



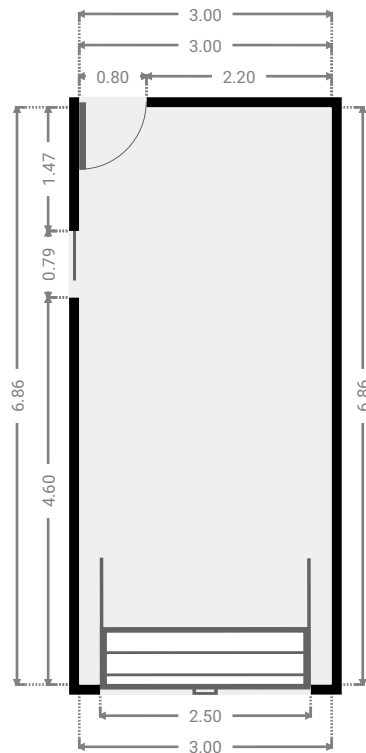
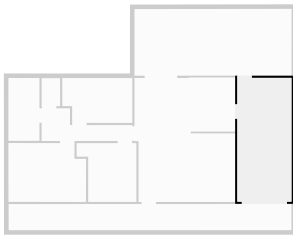
▼ **Kitchen**
Ground Floor

WIDTH: 2.46 m • LENGTH: 3.00 m
AREA: 7.38 m² • PERIMETER: 10.92 m



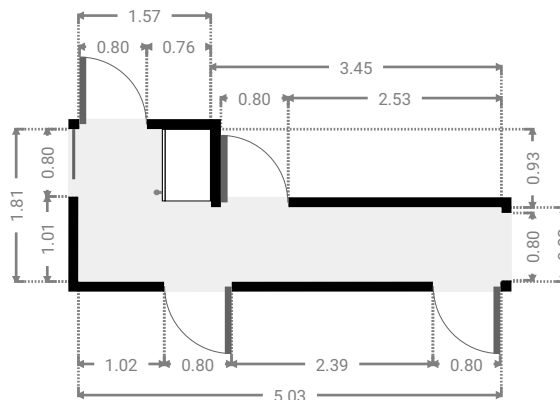
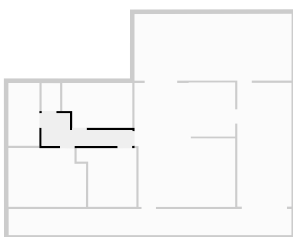
▼ Garage
Ground Floor

WIDTH: 3.00 m • LENGTH: 6.86 m
AREA: 20.58 m² • PERIMETER: 19.72 m



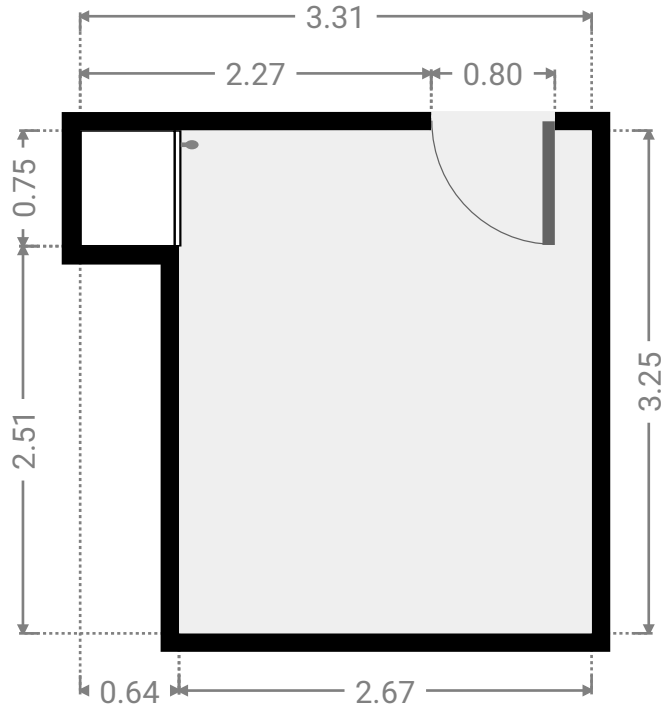
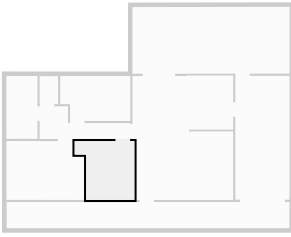
▼ Hall
Ground Floor

WIDTH: 5.03 m • LENGTH: 1.81 m
AREA: 5.89 m² • PERIMETER: 13.67 m



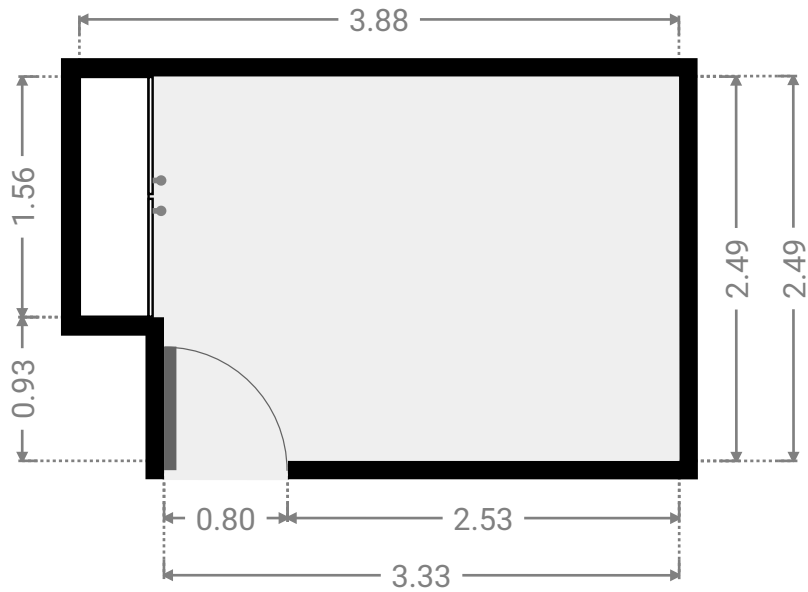
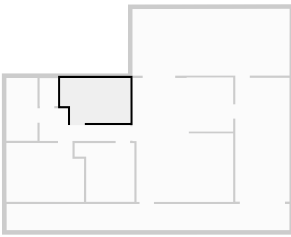
▼ **Bedroom**
Ground Floor

WIDTH: 3.31 m • LENGTH: 3.25 m
AREA: 9.17 m² • PERIMETER: 13.13 m



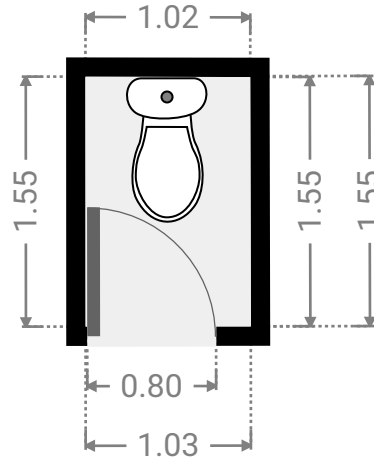
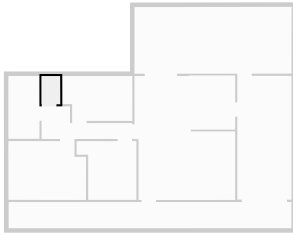
▼ **Bedroom**
Ground Floor

WIDTH: 3.88 m • LENGTH: 2.49 m
AREA: 9.14 m² • PERIMETER: 12.74 m



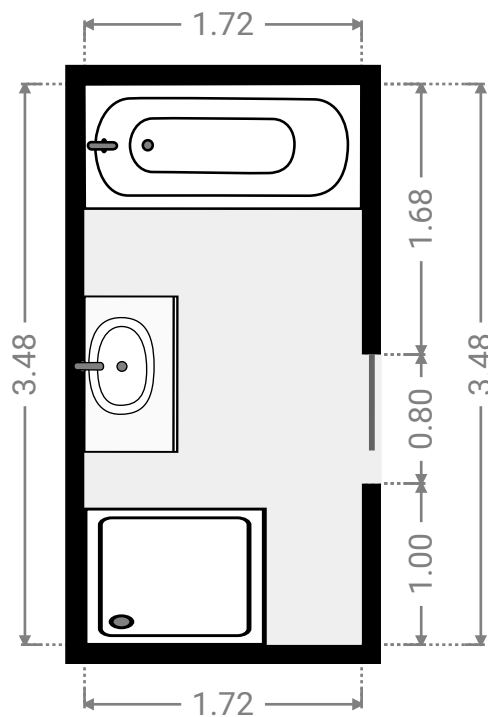
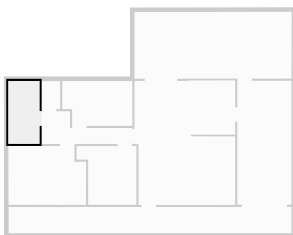
▼ **Toilet**
Ground Floor

WIDTH: 1.03 m • LENGTH: 1.55 m
AREA: 1.59 m² • PERIMETER: 5.15 m



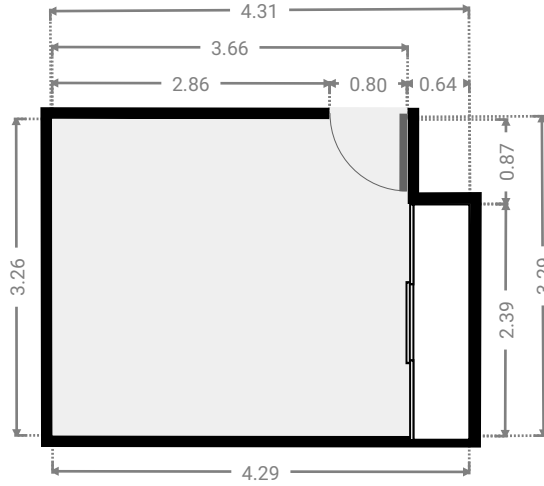
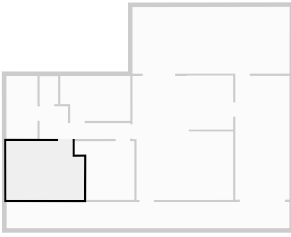
▼ **Bathroom**
Ground Floor

WIDTH: 1.72 m • LENGTH: 3.48 m
AREA: 5.99 m² • PERIMETER: 10.40 m



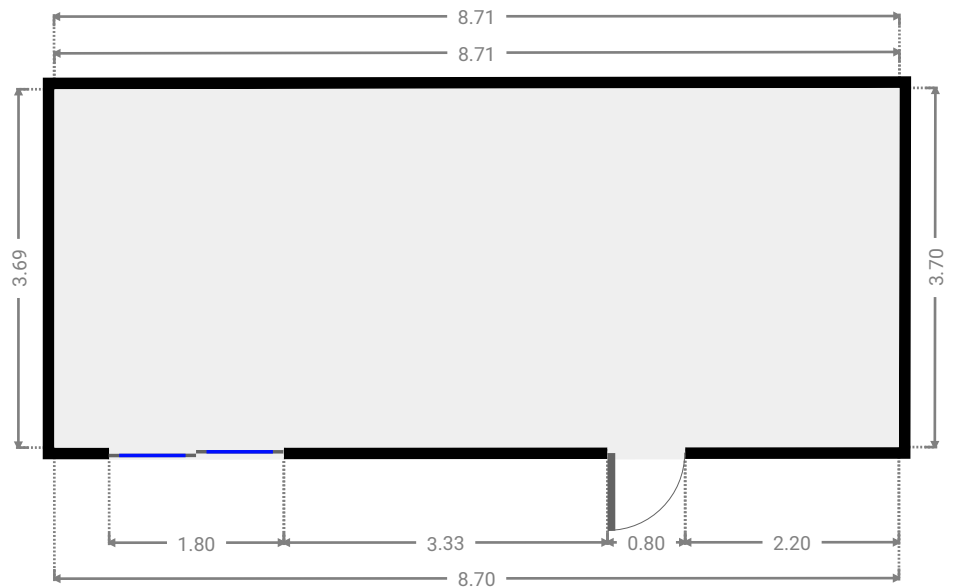
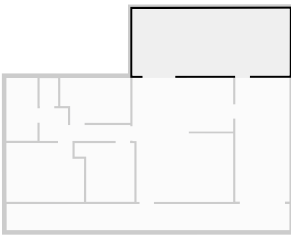
▼ **Master Bedroom**
Ground Floor

WIDTH: 4.31 m • LENGTH: 3.29 m
AREA: 13.46 m² • PERIMETER: 15.12 m



▼ **Other**
Ground Floor

WIDTH: 8.71 m • LENGTH: 3.70 m
AREA: 32.16 m² • PERIMETER: 24.80 m



▼ Other
Ground Floor

WIDTH: 15.67 m • LENGTH: 1.45 m
AREA: 22.69 m² • PERIMETER: 34.24 m

