

10 Gable Street

SUBMITTED BY

Ray White Rockhampton Casey
stockers@cqoz.com

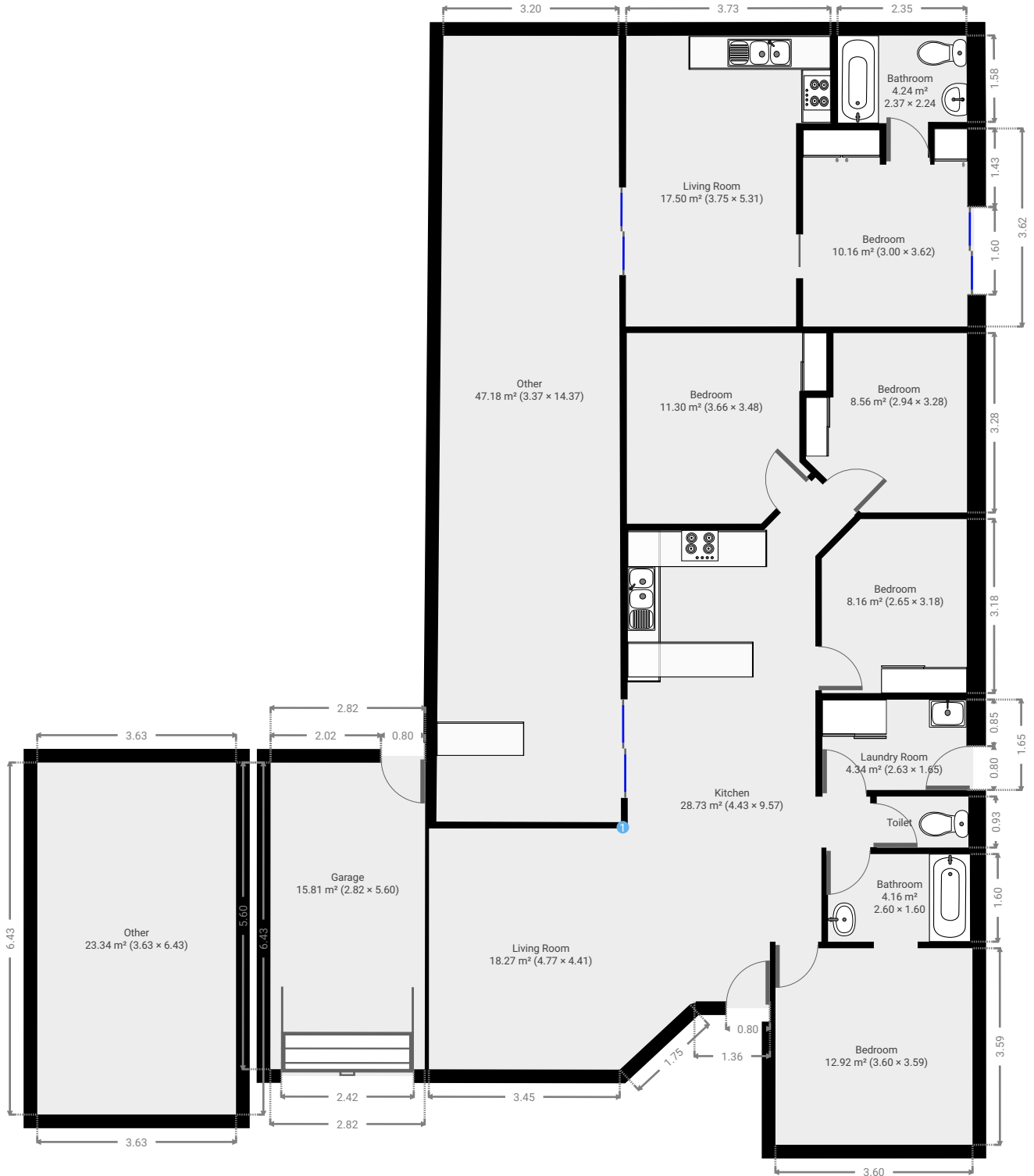
CREATED ON

2022-02-14

Floors

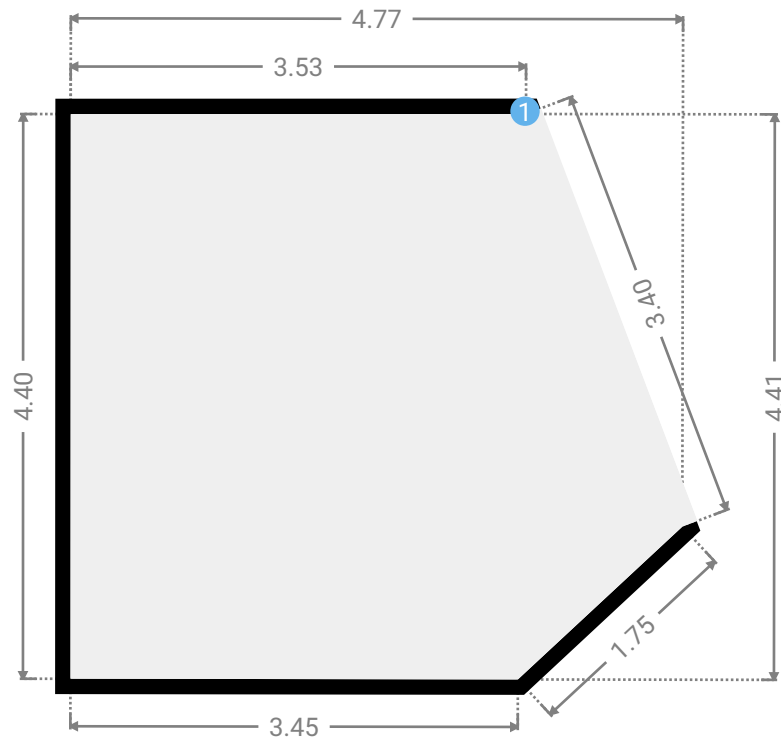
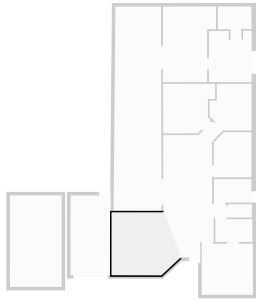
1

▼ Ground Floor



▼ Living Room Ground Floor

WIDTH: 4.77 m • LENGTH: 4.41 m
AREA: 18.27 m² • PERIMETER: 16.62 m



▼ Living Room/Ground Floor

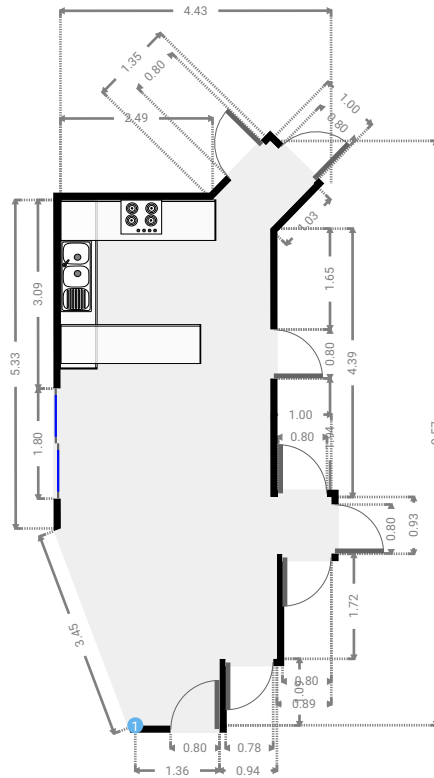
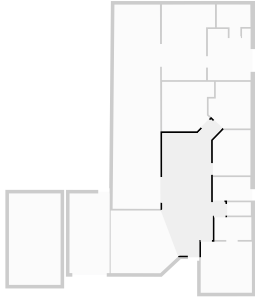
1 OPENING

Height
0.00 m



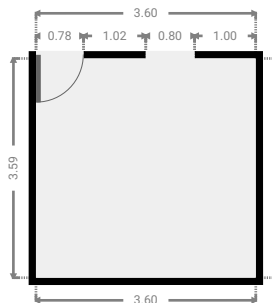
▼ Kitchen
Ground Floor

WIDTH: 4.43 m • LENGTH: 9.57 m
AREA: 28.73 m² • PERIMETER: 27.04 m



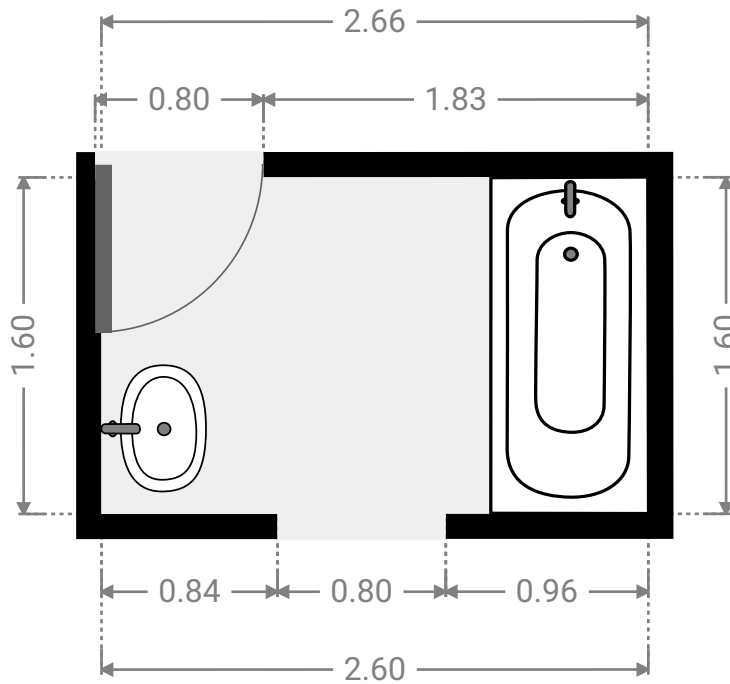
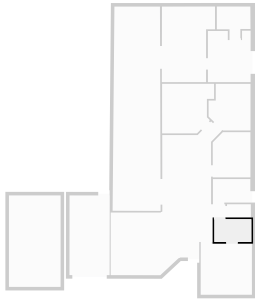
▼ Bedroom
Ground Floor

WIDTH: 3.60 m • LENGTH: 3.59 m
AREA: 12.92 m² • PERIMETER: 14.38 m



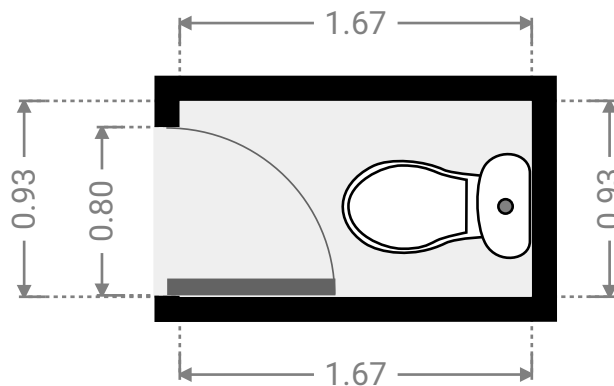
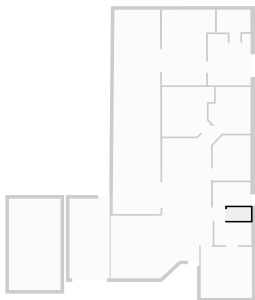
▼ **Bathroom**
Ground Floor

WIDTH: 2.60 m • LENGTH: 1.60 m
AREA: 4.16 m² • PERIMETER: 8.40 m



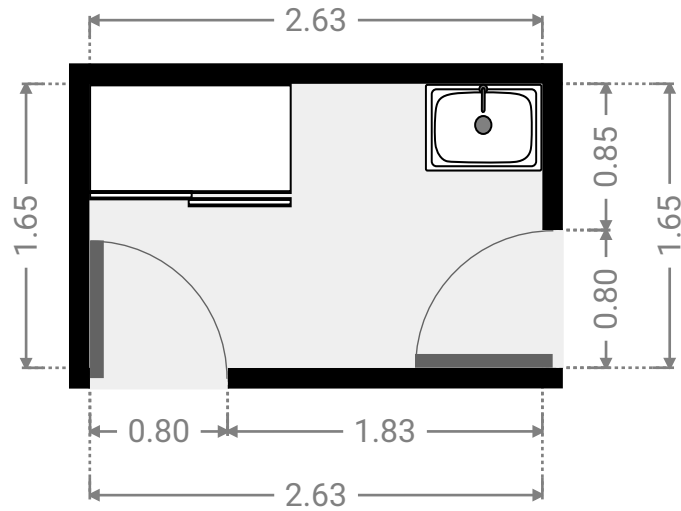
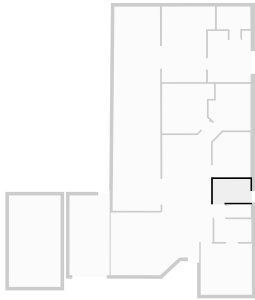
▼ **Toilet**
Ground Floor

WIDTH: 1.67 m • LENGTH: 0.93 m
AREA: 1.56 m² • PERIMETER: 5.21 m



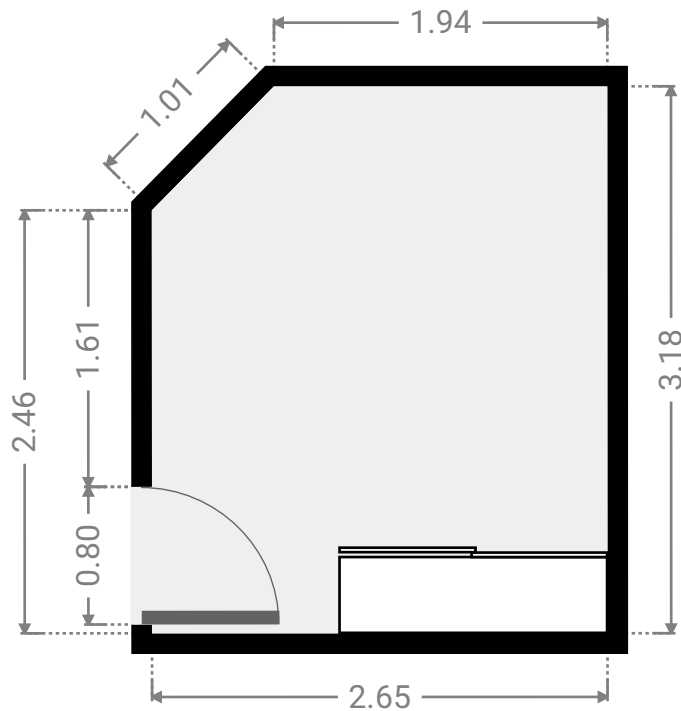
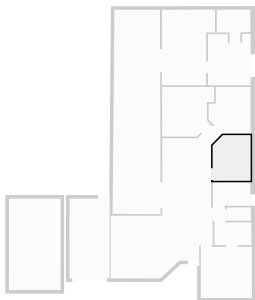
▼ **Laundry Room**
Ground Floor

WIDTH: 2.63 m • LENGTH: 1.65 m
AREA: 4.34 m² • PERIMETER: 8.56 m



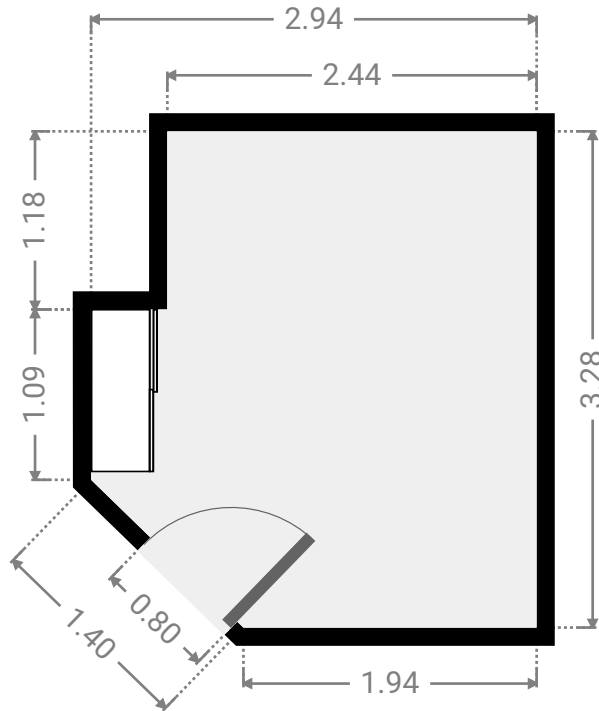
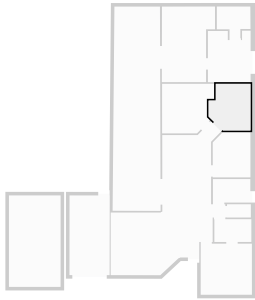
▼ **Bedroom**
Ground Floor

WIDTH: 2.65 m • LENGTH: 3.18 m
AREA: 8.16 m² • PERIMETER: 11.23 m



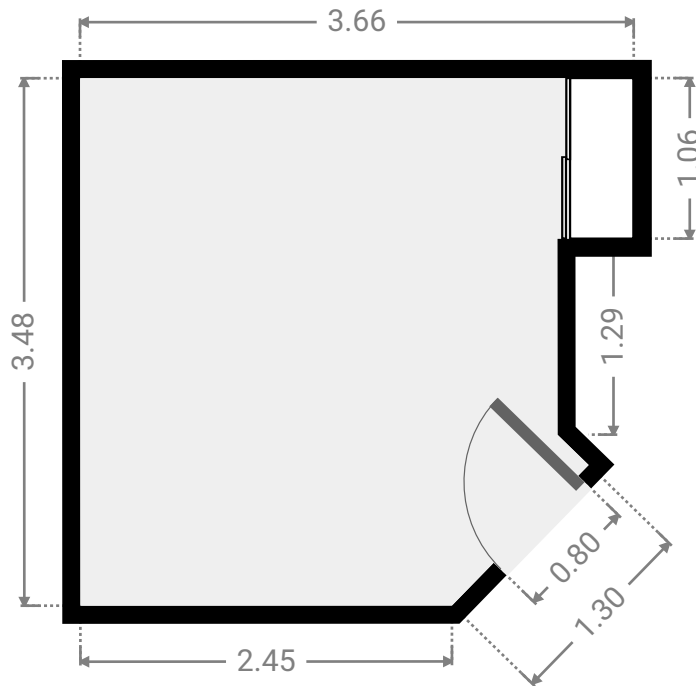
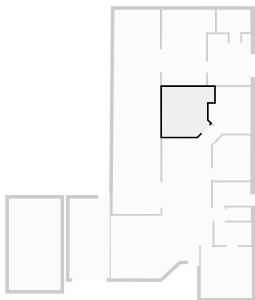
▼ **Bedroom**
Ground Floor

WIDTH: 2.94 m • LENGTH: 3.28 m
AREA: 8.56 m² • PERIMETER: 11.86 m



▼ **Bedroom**
Ground Floor

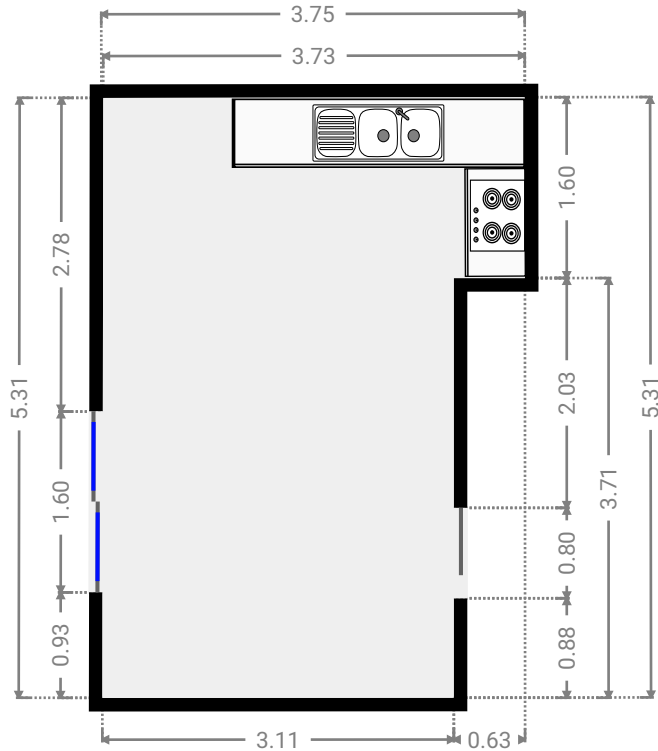
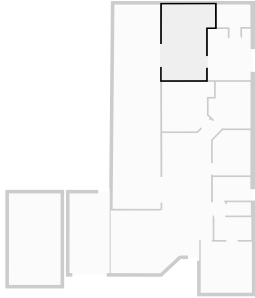
WIDTH: 3.66 m • LENGTH: 3.48 m
AREA: 11.30 m² • PERIMETER: 14.03 m



FLOORS: 1

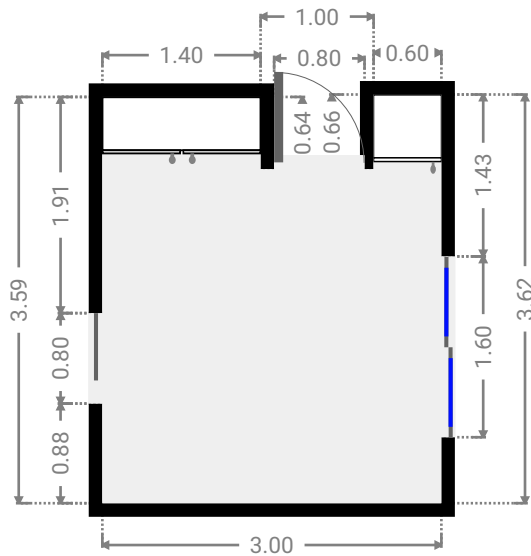
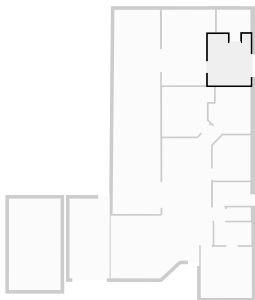
▼ Living Room
Ground Floor

WIDTH: 3.75 m • LENGTH: 5.31 m
AREA: 17.50 m² • PERIMETER: 18.09 m



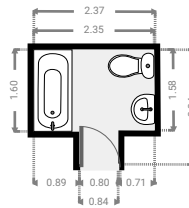
▼ Bedroom
Ground Floor

WIDTH: 3.00 m • LENGTH: 3.62 m
AREA: 10.16 m² • PERIMETER: 14.51 m



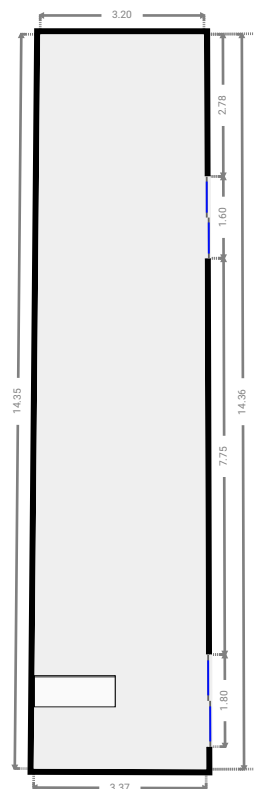
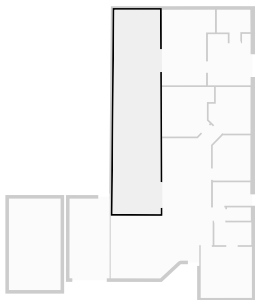
▼ Bathroom Ground Floor

WIDTH: 2.37 m • LENGTH: 2.24 m
AREA: 4.24 m² • PERIMETER: 9.19 m



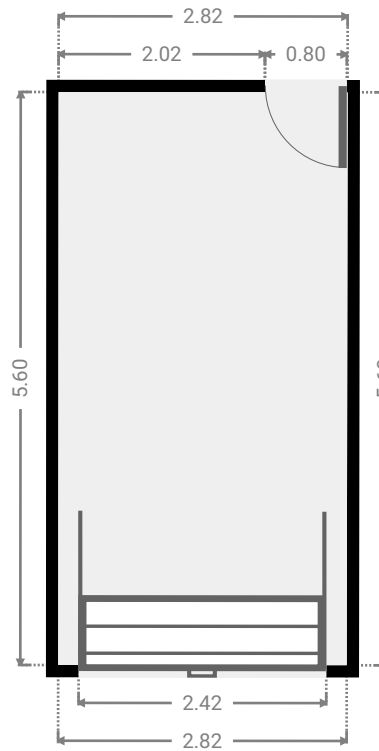
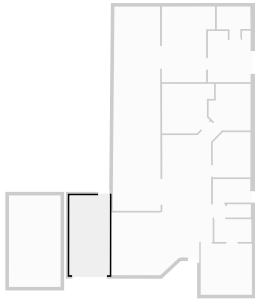
▼ Other Ground Floor

WIDTH: 3.37 m • LENGTH: 14.37 m
AREA: 47.18 m² • PERIMETER: 35.29 m



▼ Garage Ground Floor

WIDTH: 2.82 m • LENGTH: 5.60 m
AREA: 15.81 m² • PERIMETER: 16.84 m



▼ Other Ground Floor

WIDTH: 3.63 m • LENGTH: 6.43 m
AREA: 23.34 m² • PERIMETER: 20.12 m

