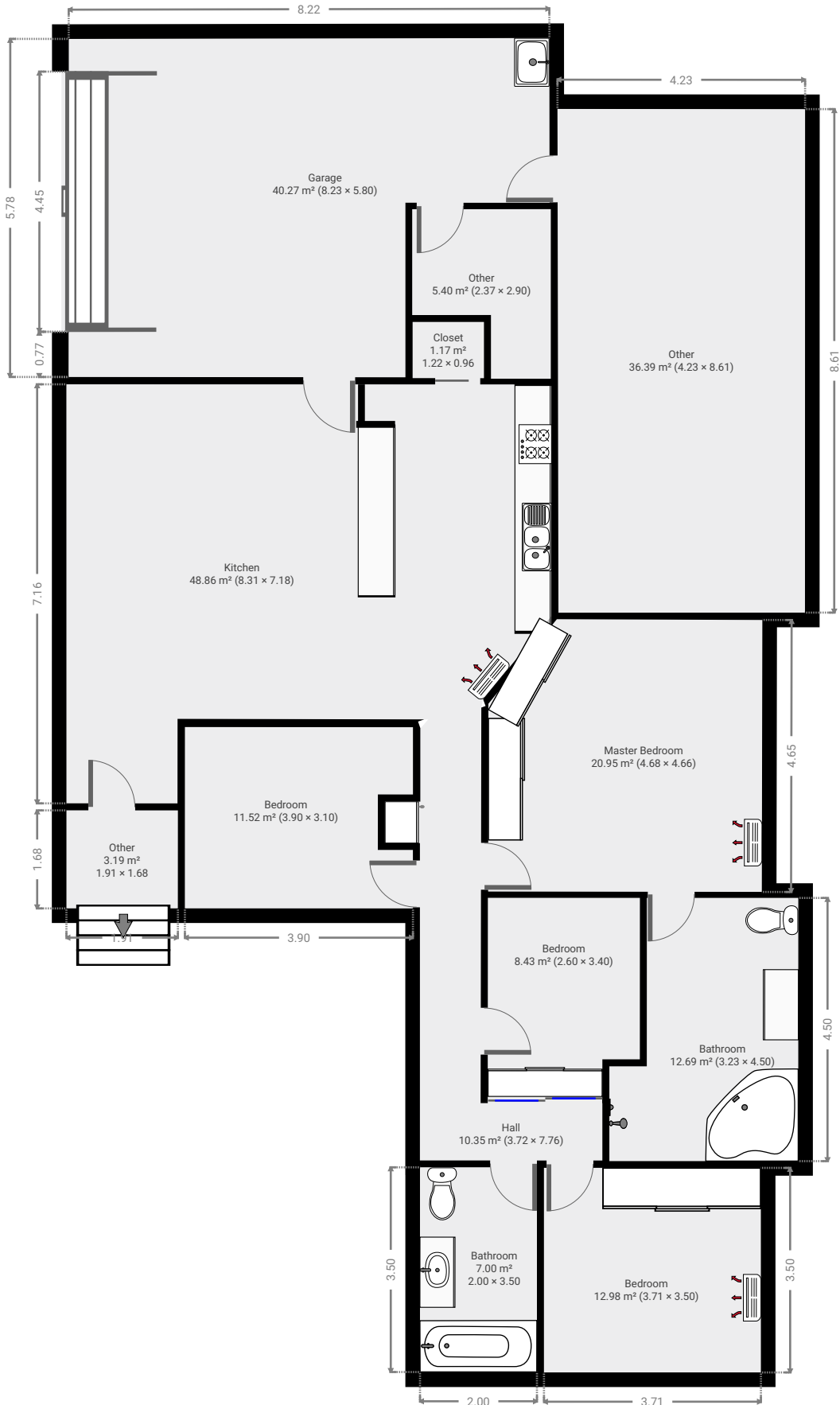


10 Frenchman's Lane

Created on
2021-07-15

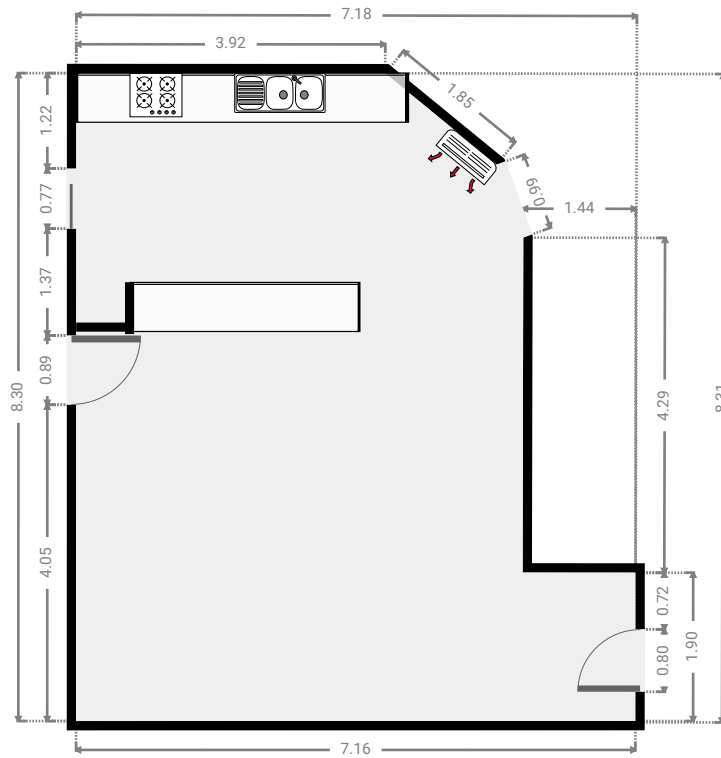
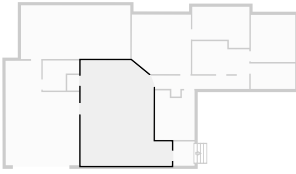
Floors
1

▼ Ground Floor



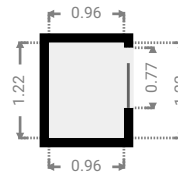
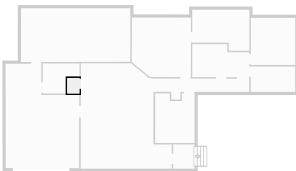
▼ **Kitchen**
Ground Floor

WIDTH: 7.18 m • LENGTH: 8.31 m
AREA: 48.86 m² • PERIMETER: 29.90 m



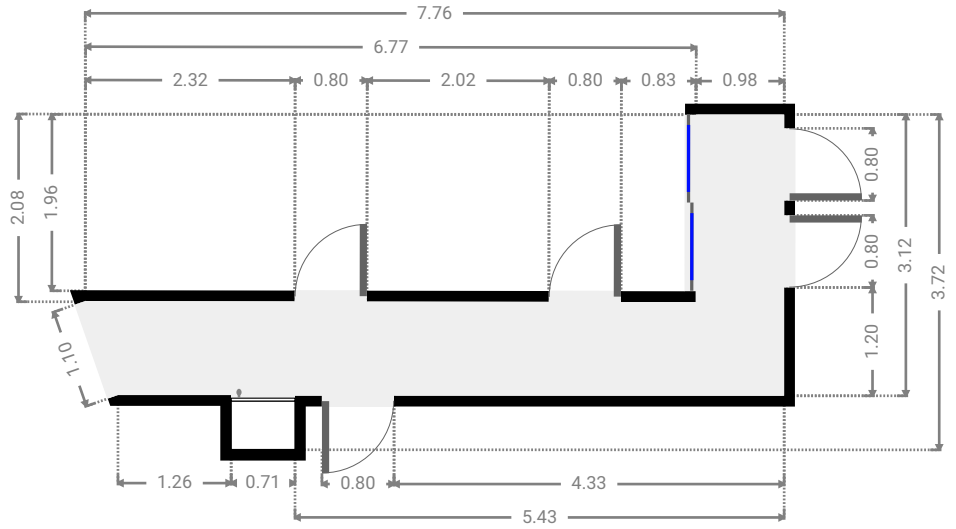
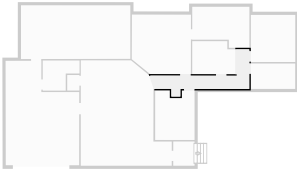
▼ **Closet**
Ground Floor

WIDTH: 0.96 m • LENGTH: 1.22 m
AREA: 1.17 m² • PERIMETER: 4.36 m



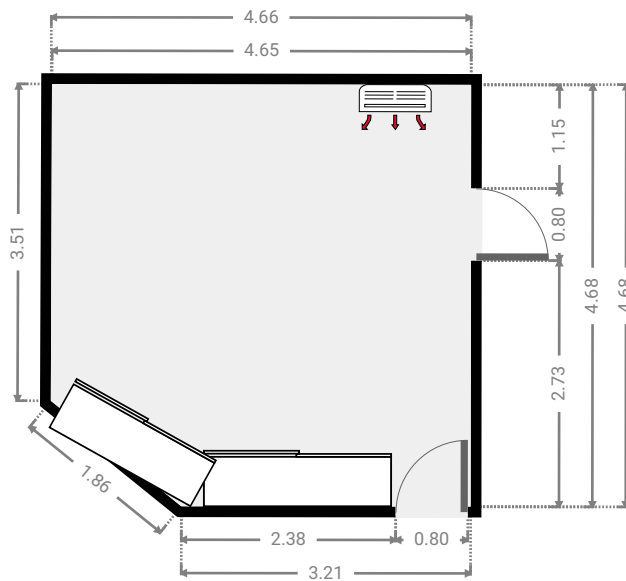
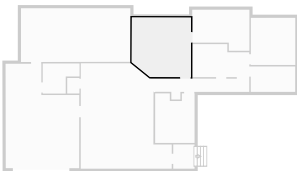
▼ Hall Ground Floor

WIDTH: 7.76 m • LENGTH: 3.72 m
AREA: 10.35 m² • PERIMETER: 22.66 m



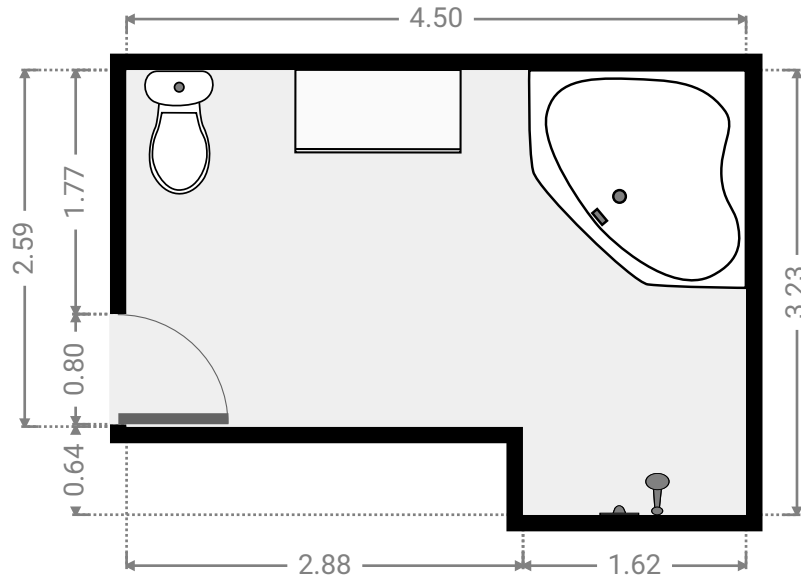
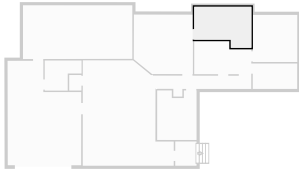
▼ Master Bedroom Ground Floor

WIDTH: 4.66 m • LENGTH: 4.68 m
AREA: 20.95 m² • PERIMETER: 17.92 m



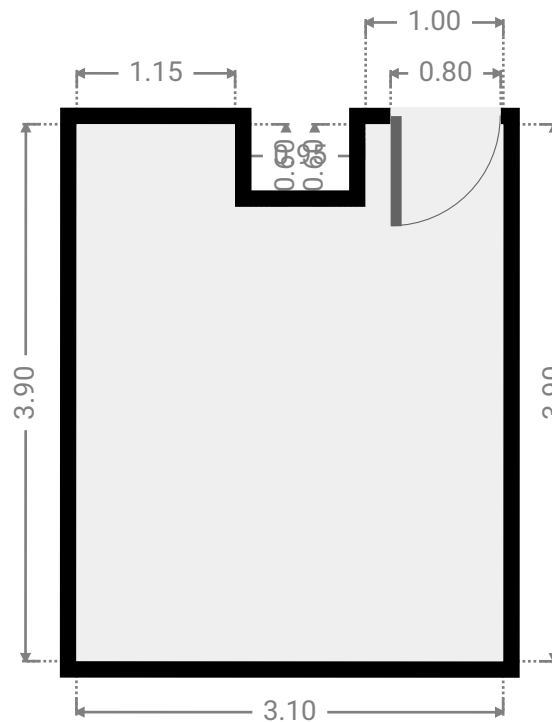
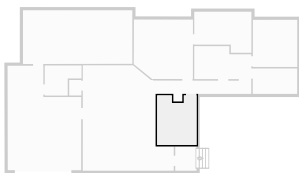
▼ Bathroom
Ground Floor

WIDTH: 4.50 m • LENGTH: 3.23 m
AREA: 12.69 m² • PERIMETER: 15.46 m



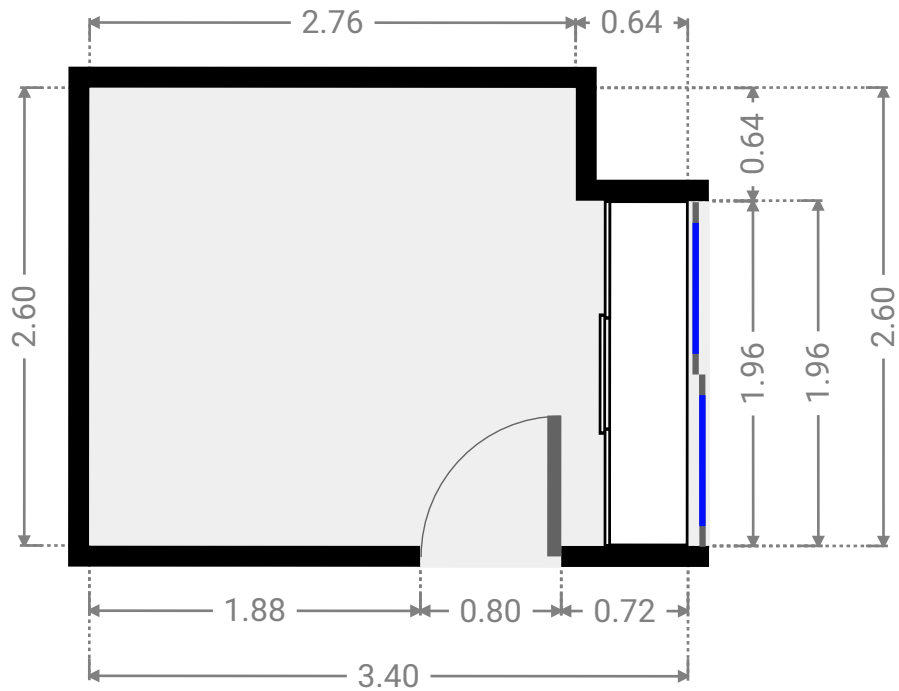
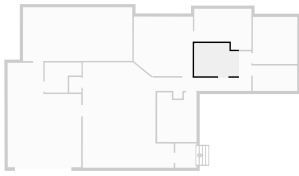
▼ Bedroom
Ground Floor

WIDTH: 3.10 m • LENGTH: 3.90 m
AREA: 11.52 m² • PERIMETER: 15.20 m



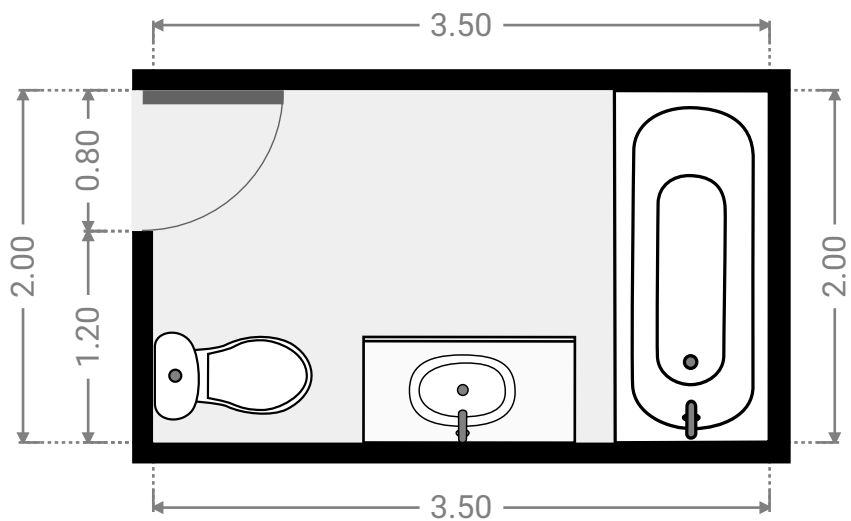
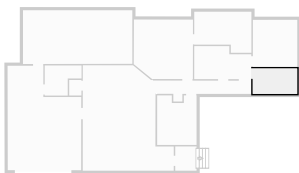
▼ **Bedroom**
Ground Floor

WIDTH: 3.40 m • LENGTH: 2.60 m
AREA: 8.43 m² • PERIMETER: 12.00 m



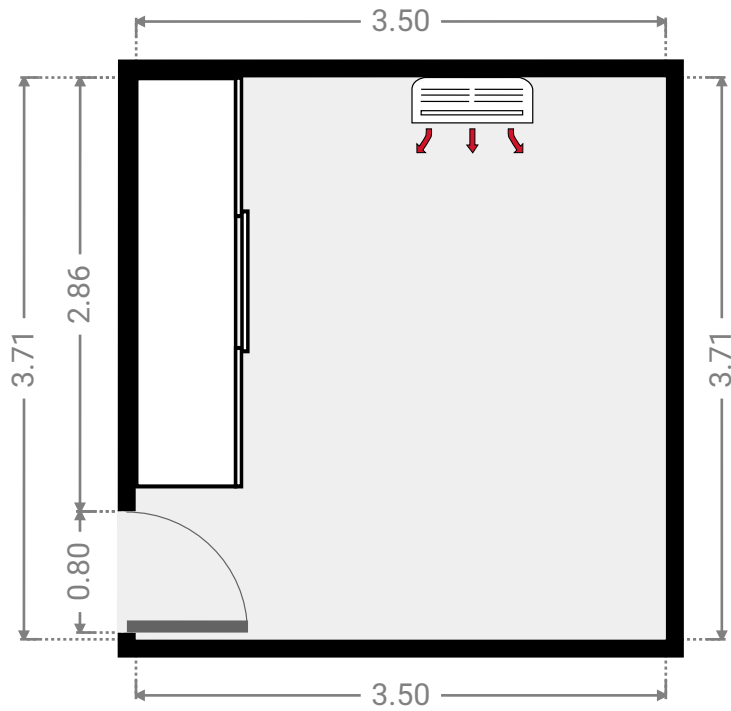
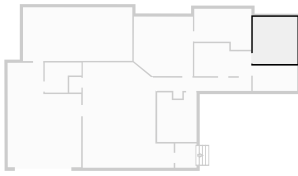
▼ **Bathroom**
Ground Floor

WIDTH: 3.50 m • LENGTH: 2.00 m
AREA: 7.00 m² • PERIMETER: 11.00 m



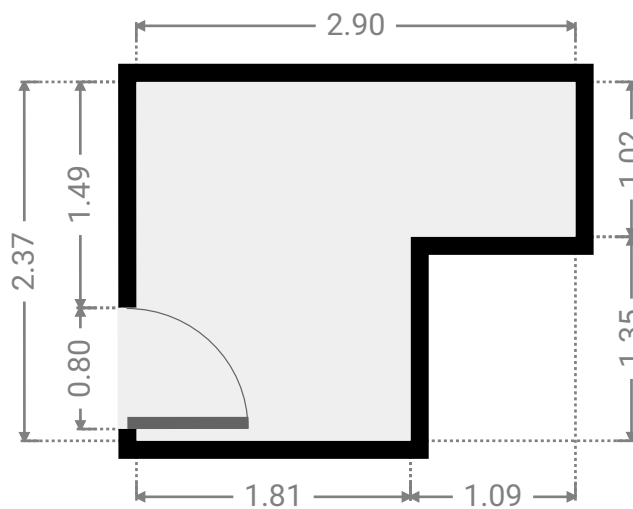
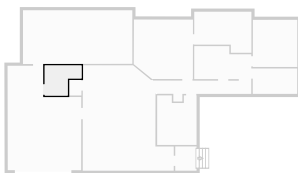
▼ Bedroom Ground Floor

WIDTH: 3.50 m • LENGTH: 3.71 m
AREA: 12.98 m² • PERIMETER: 14.42 m



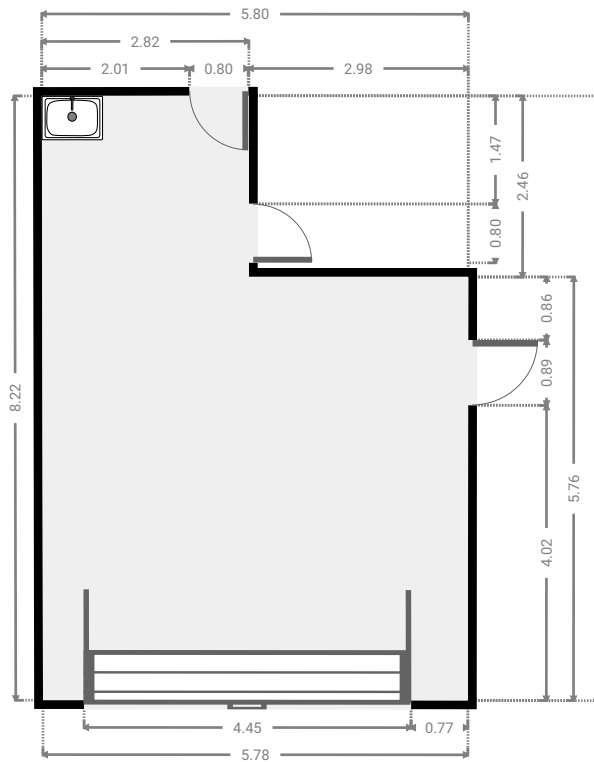
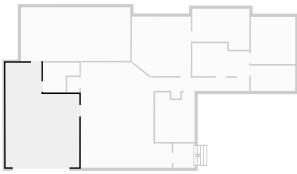
▼ Other Ground Floor

WIDTH: 2.90 m • LENGTH: 2.37 m
AREA: 5.40 m² • PERIMETER: 10.54 m



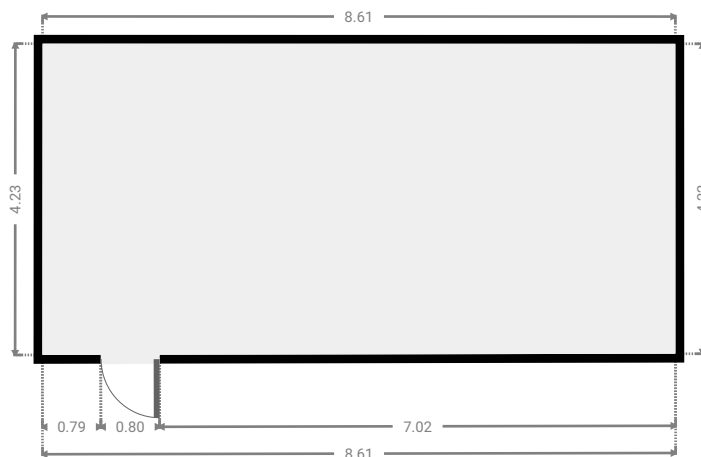
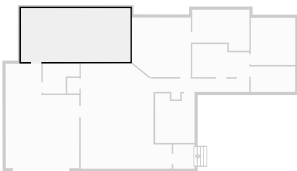
▼ Garage Ground Floor

WIDTH: 5.80 m • LENGTH: 8.23 m
AREA: 40.27 m² • PERIMETER: 28.03 m



▼ Other Ground Floor

WIDTH: 8.61 m • LENGTH: 4.23 m
AREA: 36.39 m² • PERIMETER: 25.67 m



▼ Other
Ground Floor

WIDTH: 1.68 m • LENGTH: 1.91 m
AREA: 3.19 m² • PERIMETER: 7.16 m

