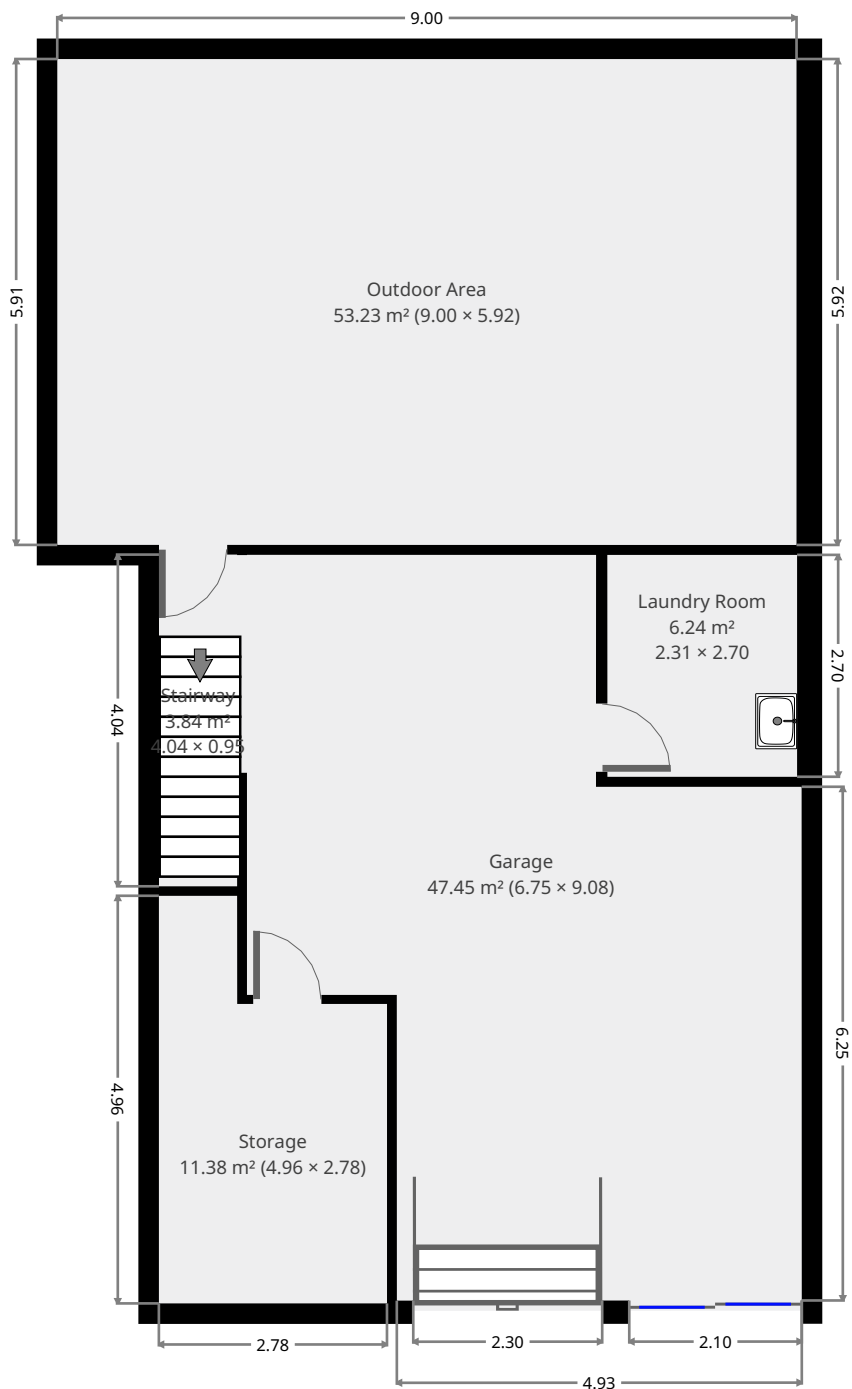
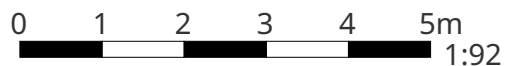


10 Fisher Street , Gracemere

Ground Floor



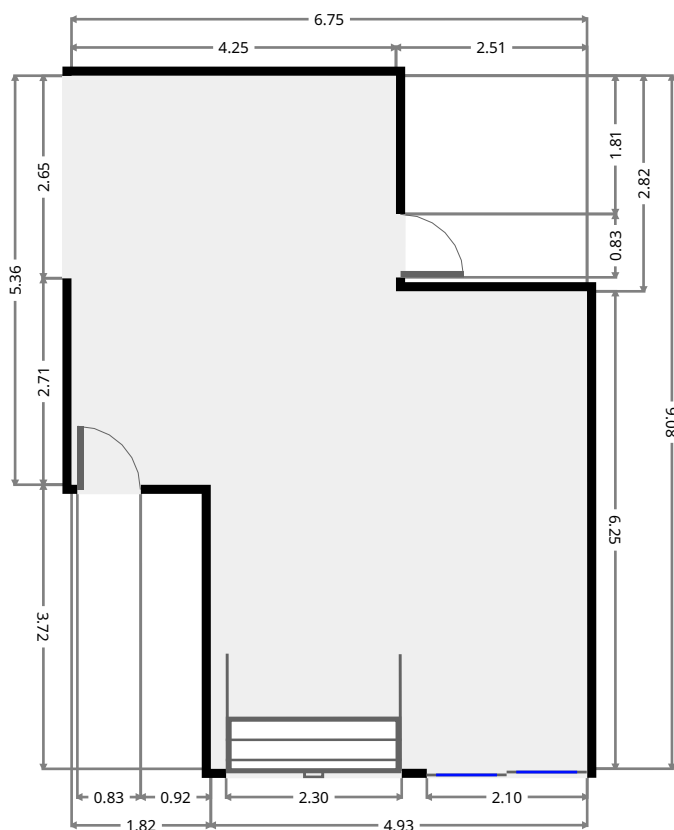
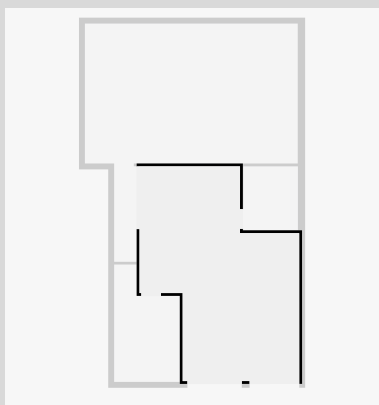
THIS FLOORPLAN IS PROVIDED WITHOUT WARRANTY OF ANY KIND. SENSOPIA DISCLAIMS ANY WARRANTY INCLUDING, WITHOUT LIMITATION, SATISFACTORY QUALITY OR ACCURACY OF DIMENSIONS.



10 Fisher Street , Gracemere

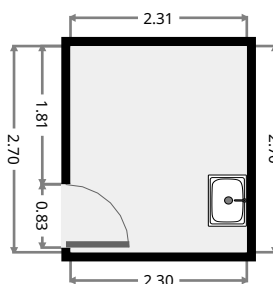
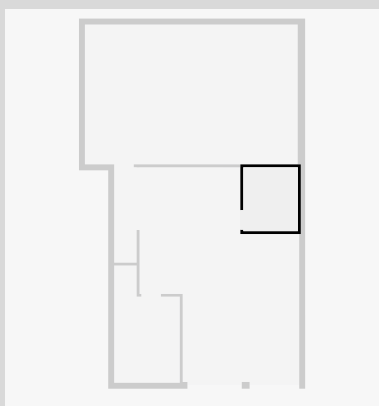
Garage

Width: 6.75 m
Length: 9.08 m
Area: 47.45 m²
Perimeter: 31.66 m



Laundry Room

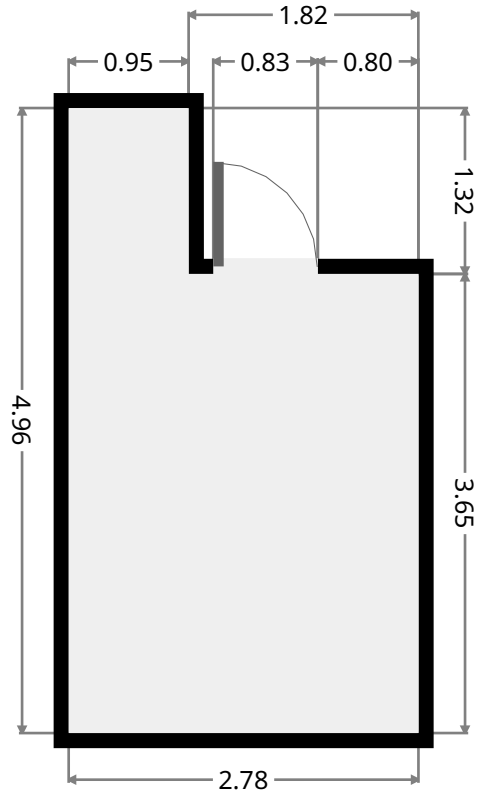
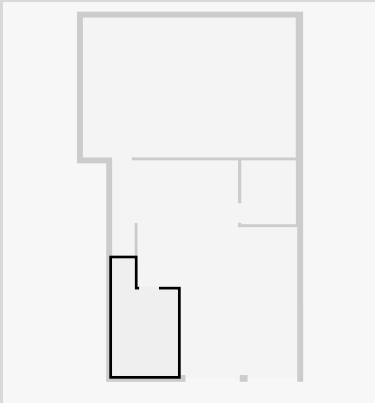
Width: 2.31 m
Length: 2.70 m
Area: 6.24 m²
Perimeter: 10.02 m



10 Fisher Street , Gracemere

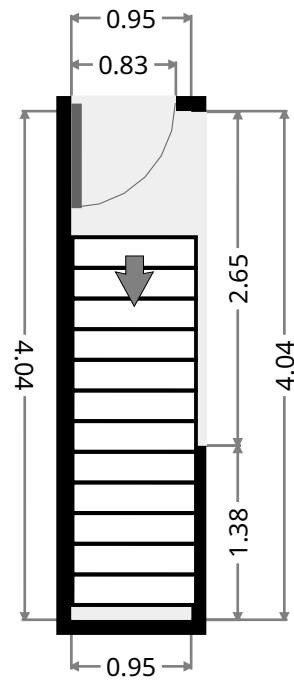
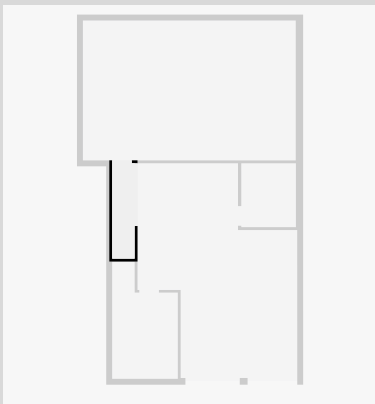
Storage

Width: 2.78 m
Length: 4.96 m
Area: 11.38 m²
Perimeter: 15.48 m



Stairway

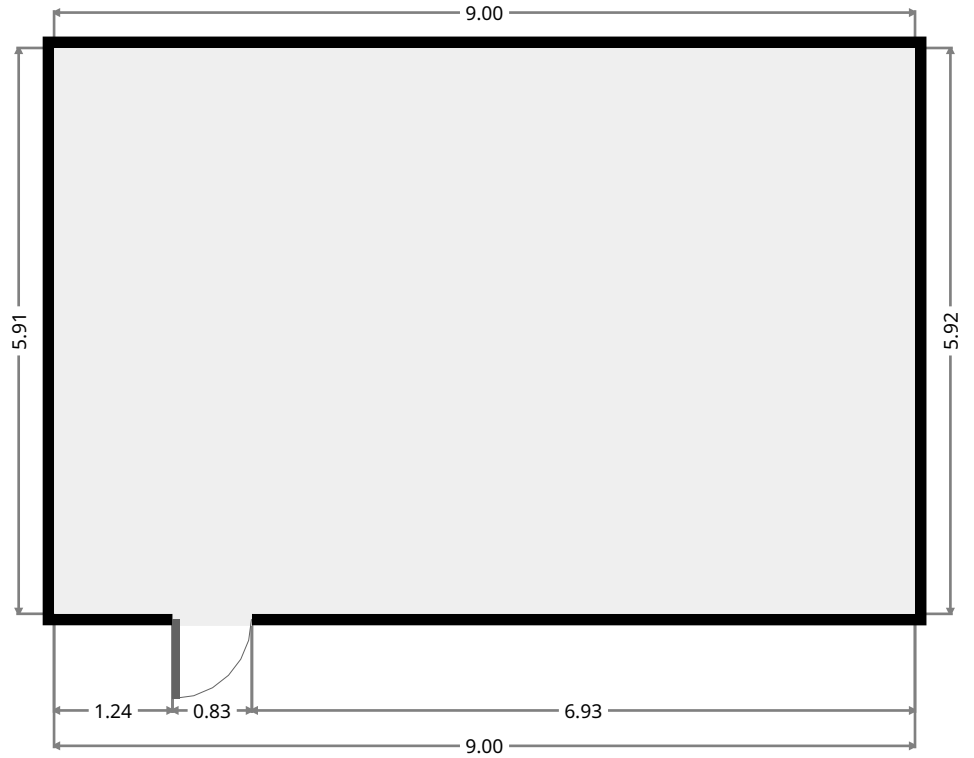
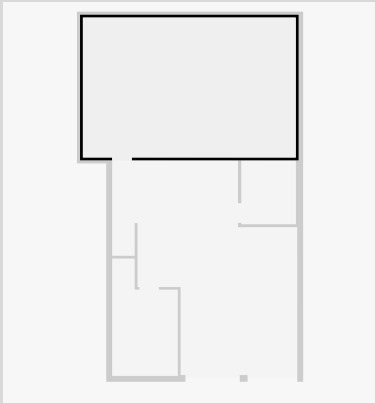
Width: 0.95 m
Length: 4.04 m
Area: 3.84 m²
Perimeter: 9.98 m



10 Fisher Street , Gracemere

Outdoor Area

Width: 5.92 m
Length: 9.00 m
Area: 53.23 m²
Perimeter: 29.83 m



10 Fisher Street , Gracemere

1st Floor



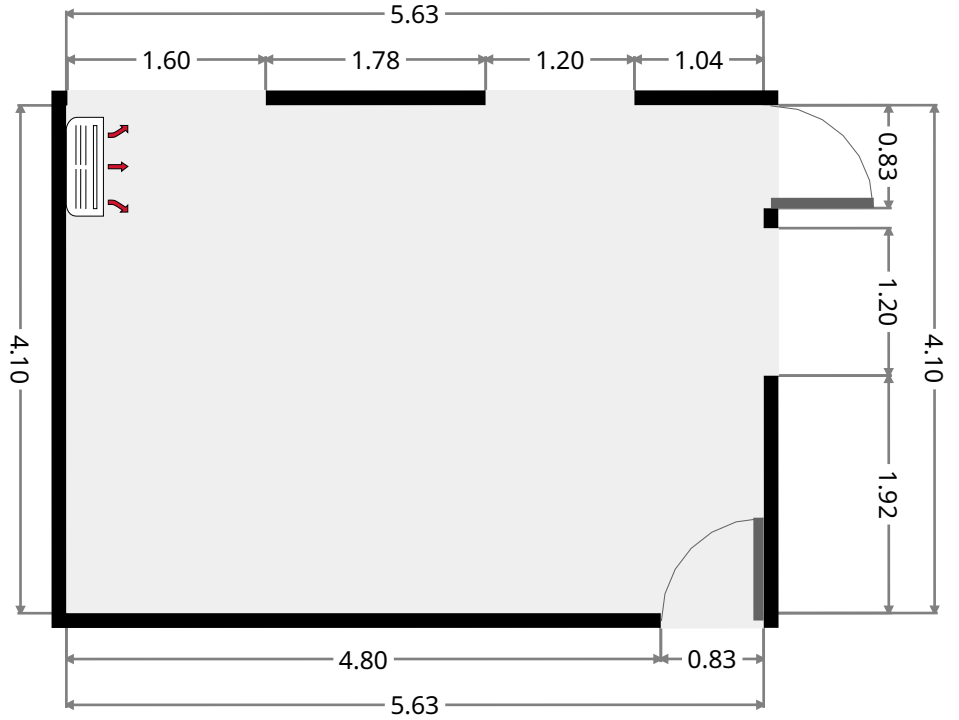
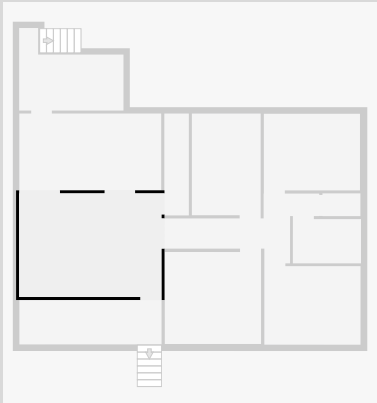
THIS FLOORPLAN IS PROVIDED WITHOUT WARRANTY OF ANY KIND. SENSOPIA DISCLAIMS ANY WARRANTY INCLUDING, WITHOUT LIMITATION, SATISFACTORY QUALITY OR ACCURACY OF DIMENSIONS.



10 Fisher Street , Gracemere

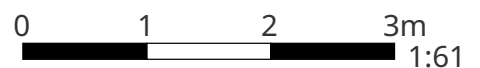
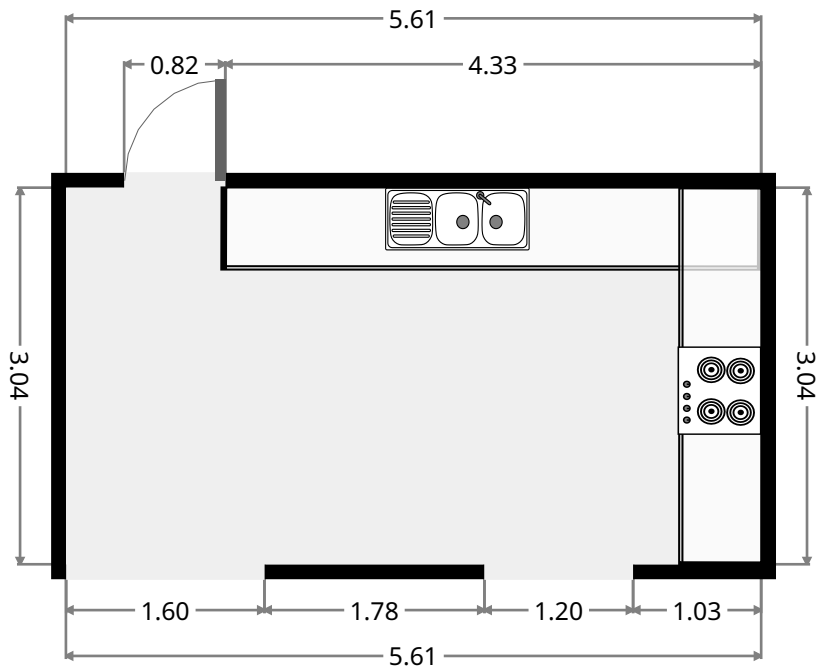
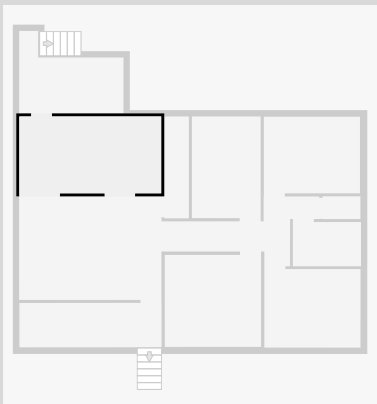
Living Room

Width: 4.10 m
 Length: 5.63 m
 Area: 23.07 m²
 Perimeter: 19.45 m



Kitchen

Width: 3.04 m
 Length: 5.61 m
 Area: 17.06 m²
 Perimeter: 17.30 m

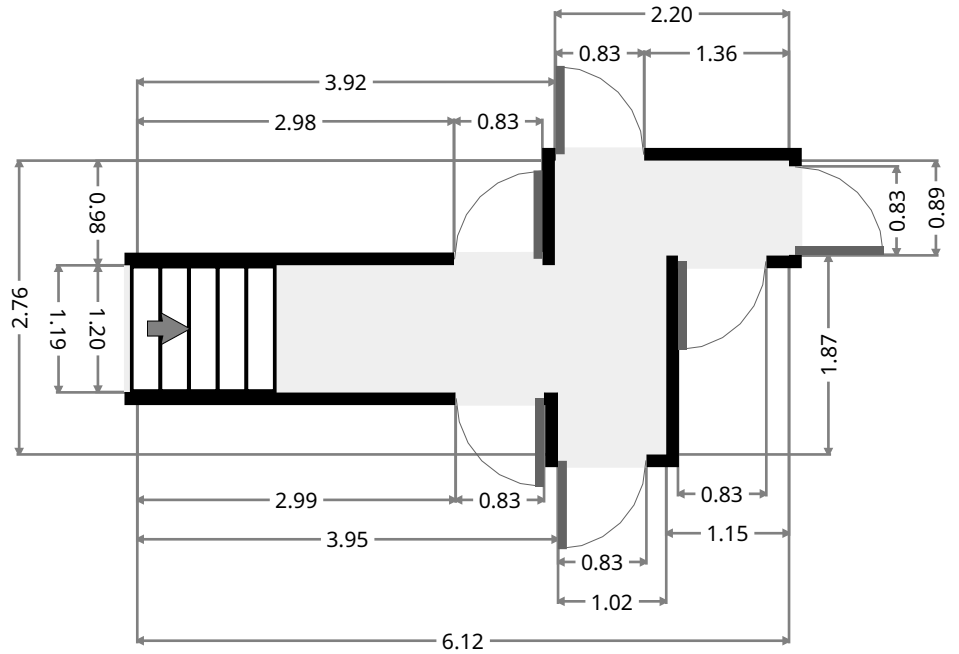
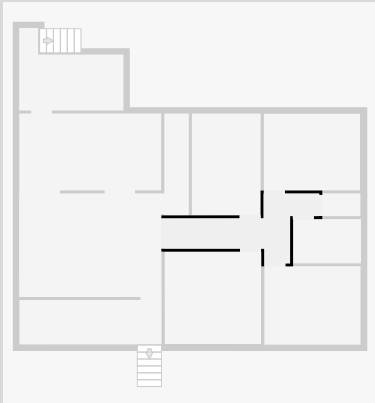


THIS FLOORPLAN IS PROVIDED WITHOUT WARRANTY OF ANY KIND. SENSOPIA DISCLAIMS ANY WARRANTY INCLUDING, WITHOUT LIMITATION, SATISFACTORY QUALITY OR ACCURACY OF DIMENSIONS.

10 Fisher Street , Gracemere

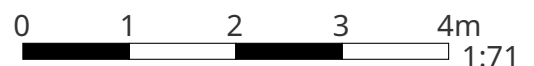
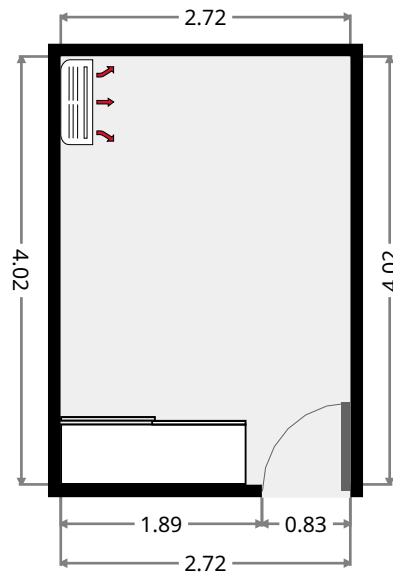
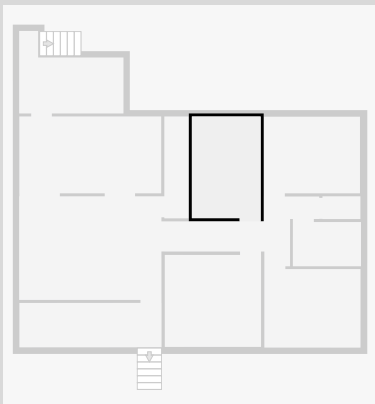
Hall

Width: 2.76 m
 Length: 6.12 m
 Area: 8.58 m²
 Perimeter: 17.77 m



Bedroom

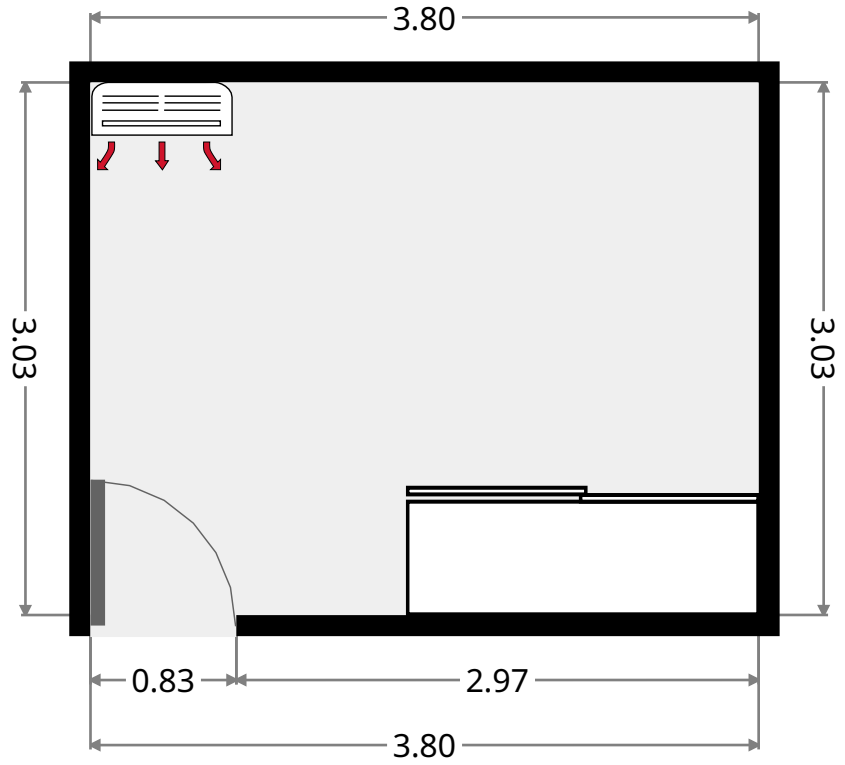
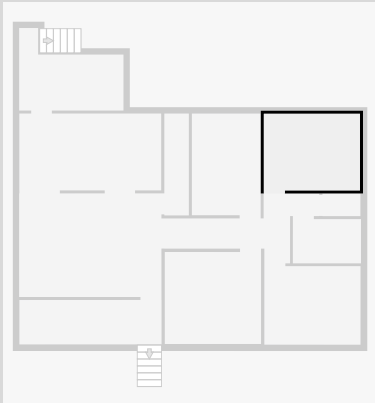
Width: 2.72 m
 Length: 4.02 m
 Area: 10.93 m²
 Perimeter: 13.48 m



10 Fisher Street , Gracemere

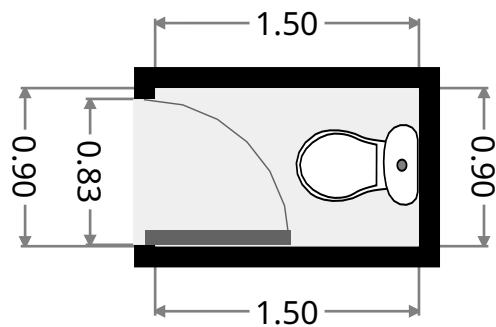
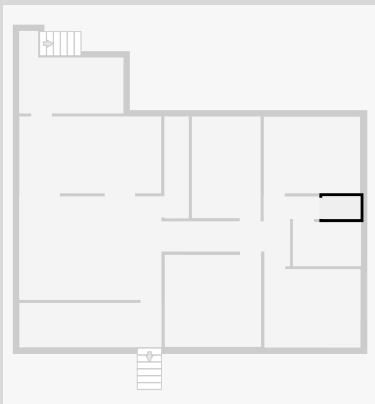
Bedroom

Width: 3.03 m
Length: 3.80 m
Area: 11.52 m²
Perimeter: 13.66 m



Toilet

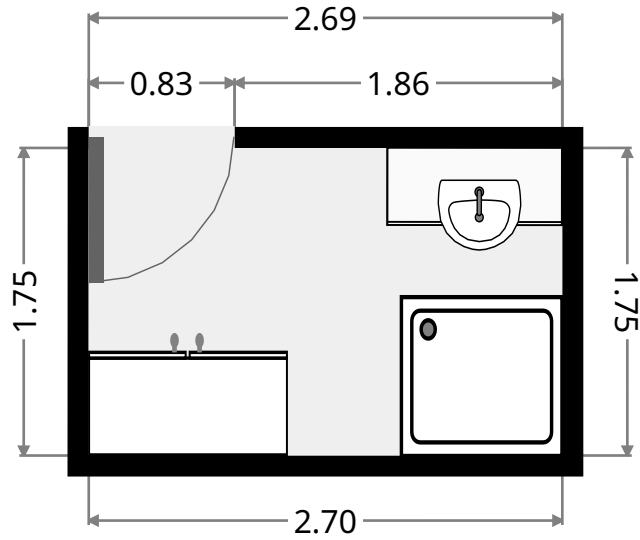
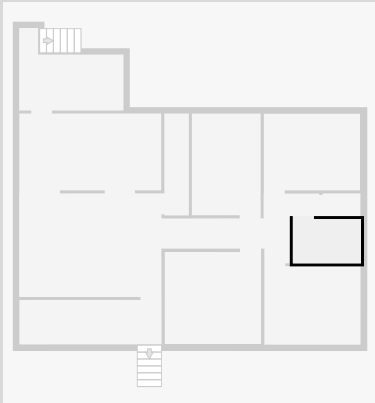
Width: 0.90 m
Length: 1.50 m
Area: 1.35 m²
Perimeter: 4.80 m



10 Fisher Street , Gracemere

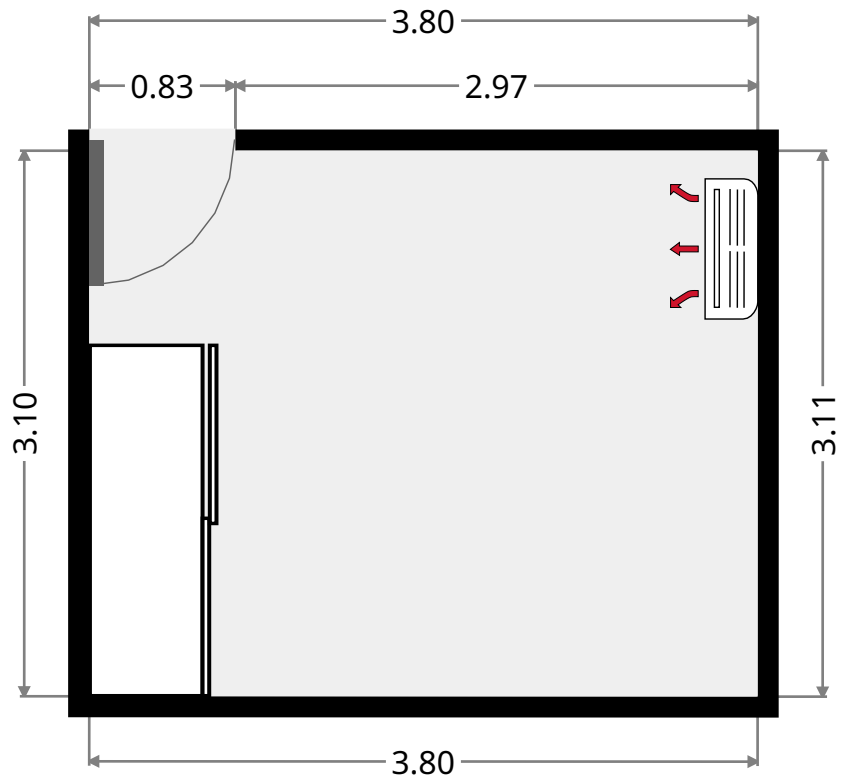
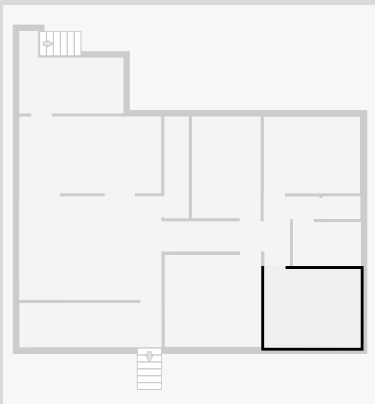
Bathroom

Width: 1.75 m
Length: 2.69 m
Area: 4.72 m²
Perimeter: 8.89 m



Bedroom

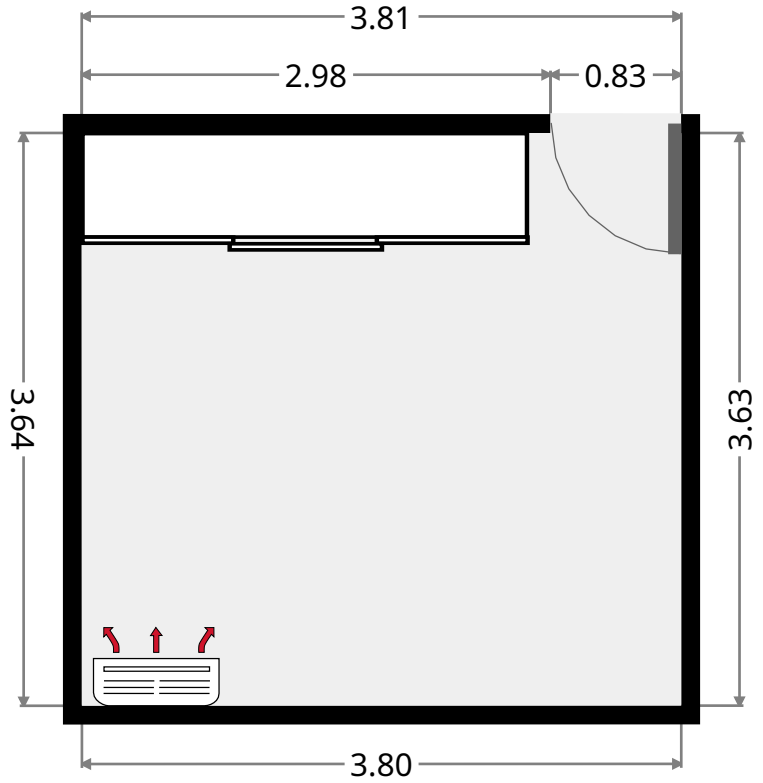
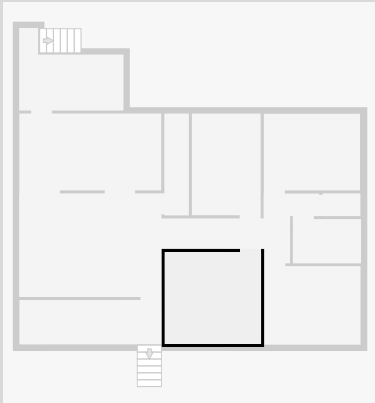
Width: 3.11 m
Length: 3.80 m
Area: 11.81 m²
Perimeter: 13.82 m



10 Fisher Street , Gracemere

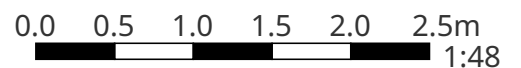
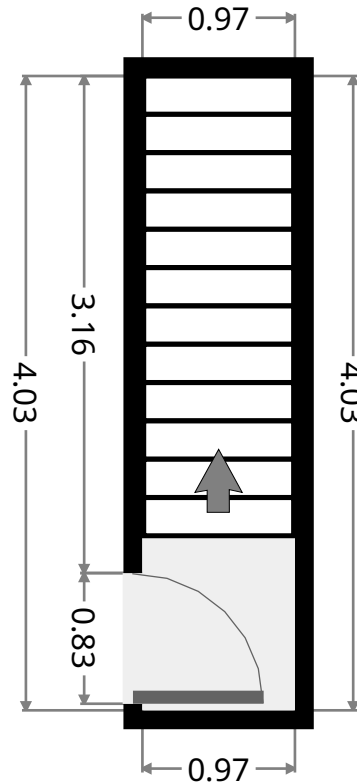
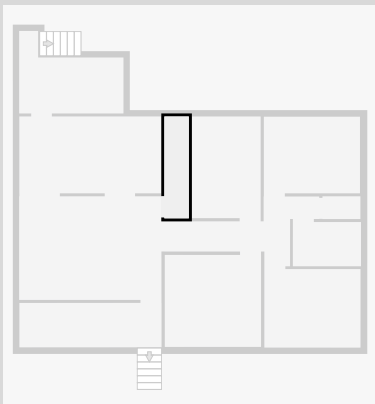
Bedroom

Width: 3.63 m
 Length: 3.81 m
 Area: 13.85 m²
 Perimeter: 14.89 m



Stairway

Width: 0.97 m
 Length: 4.03 m
 Area: 3.90 m²
 Perimeter: 9.99 m

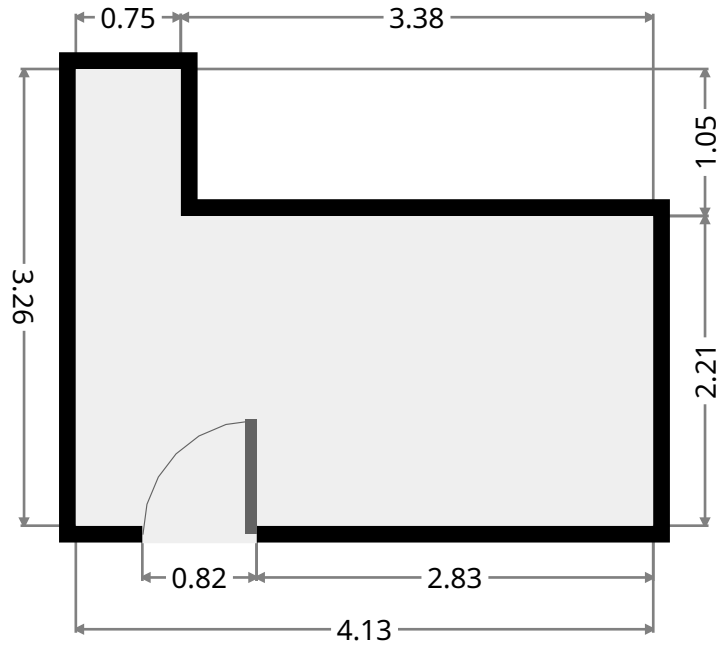
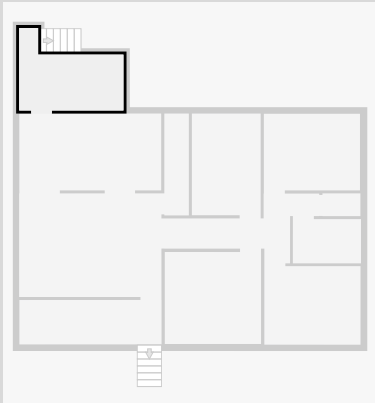


THIS FLOORPLAN IS PROVIDED WITHOUT WARRANTY OF ANY KIND. SENSOPIA DISCLAIMS ANY WARRANTY INCLUDING, WITHOUT LIMITATION, SATISFACTORY QUALITY OR ACCURACY OF DIMENSIONS.

10 Fisher Street , Gracemere

Rear Deck

Width: 3.26 m
 Length: 4.13 m
 Area: 9.92 m²
 Perimeter: 14.78 m



Front Verandah

Width: 1.76 m
 Length: 5.62 m
 Area: 9.87 m²
 Perimeter: 14.76 m

