

10 Audrey Drive

SUBMITTED BY

Ray White Rockhampton Casey
stockers@cqoz.com

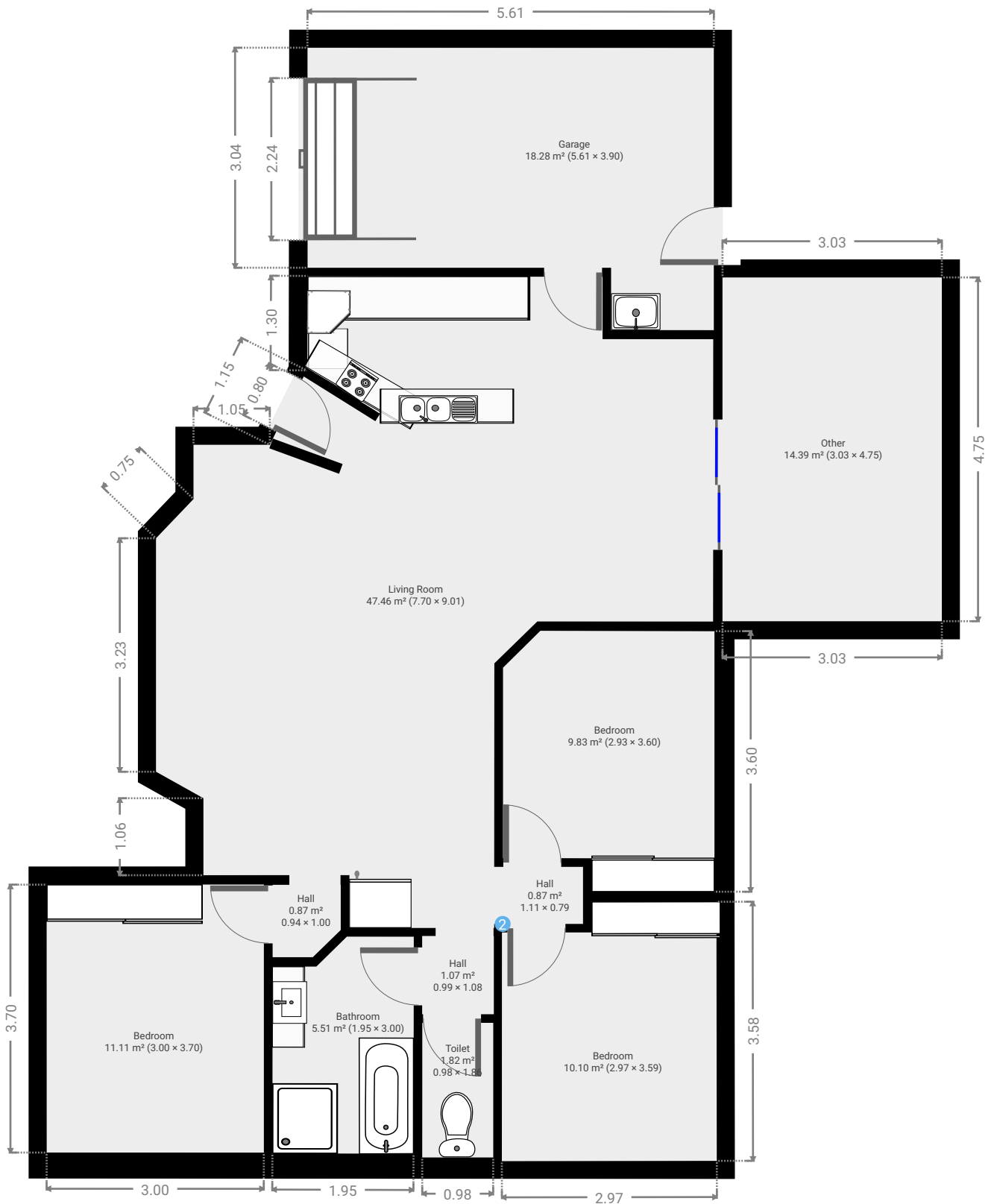
CREATED ON

2021-11-02

Floors

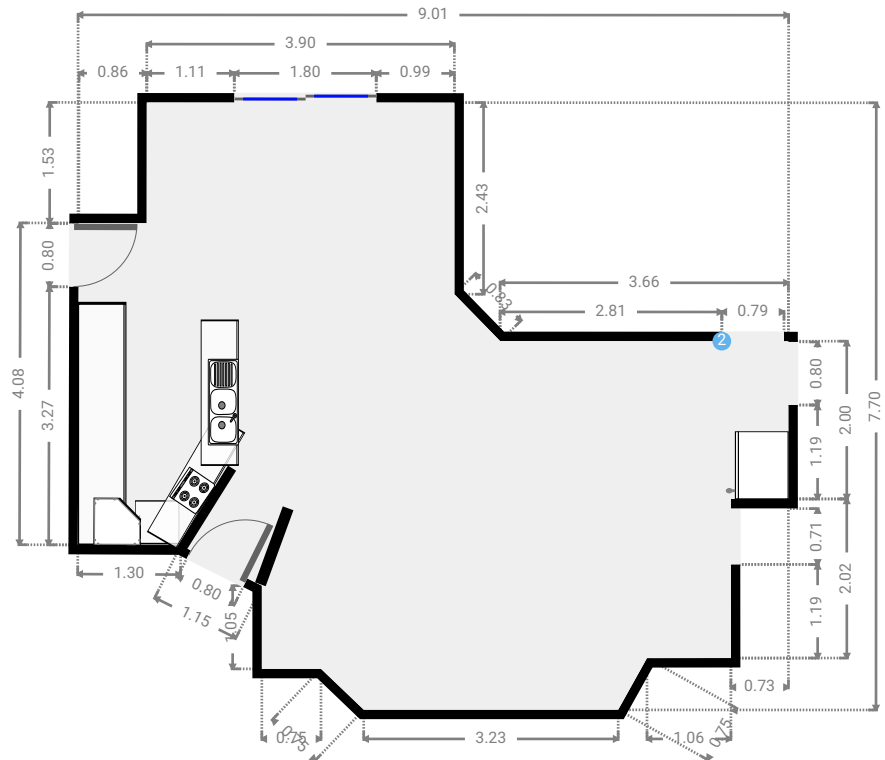
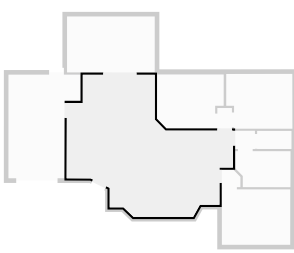
1

▼ Ground Floor



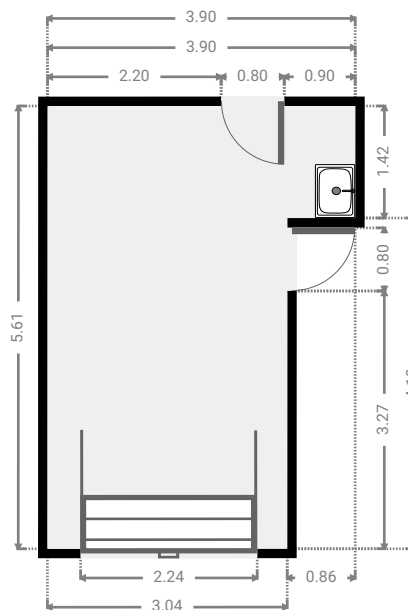
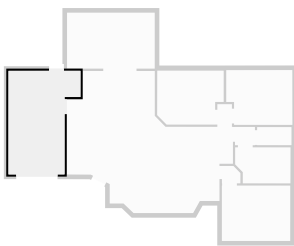
▼ Living Room
Ground Floor

WIDTH: 9.01 m • LENGTH: 7.70 m
AREA: 47.46 m² • PERIMETER: 32.08 m



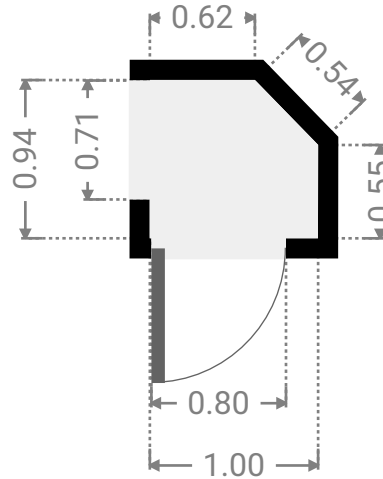
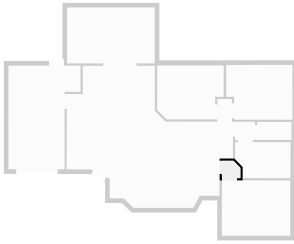
▼ Garage
Ground Floor

WIDTH: 3.90 m • LENGTH: 5.61 m
AREA: 18.28 m² • PERIMETER: 19.03 m



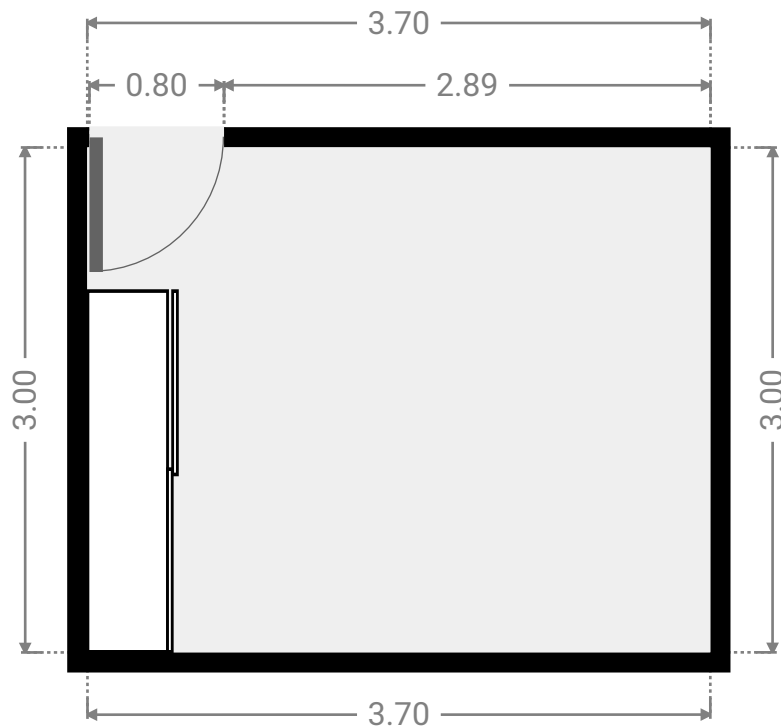
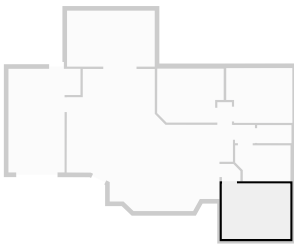
▼ **Hall**
Ground Floor

WIDTH: 1.00 m • LENGTH: 0.94 m
AREA: 0.87 m² • PERIMETER: 3.66 m



▼ **Bedroom**
Ground Floor

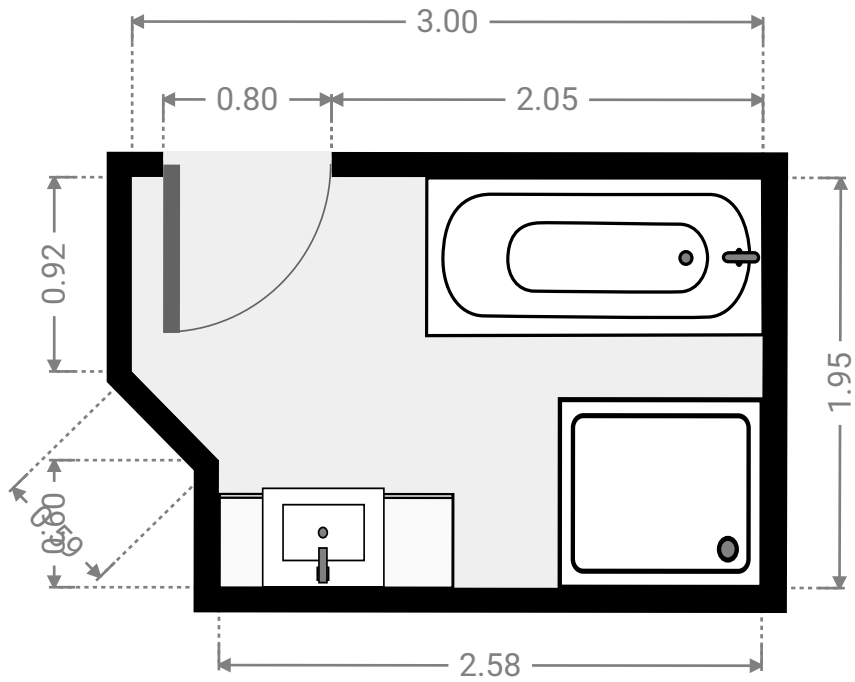
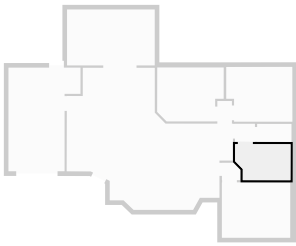
WIDTH: 3.70 m • LENGTH: 3.00 m
AREA: 11.11 m² • PERIMETER: 13.41 m



FLOORS: 1

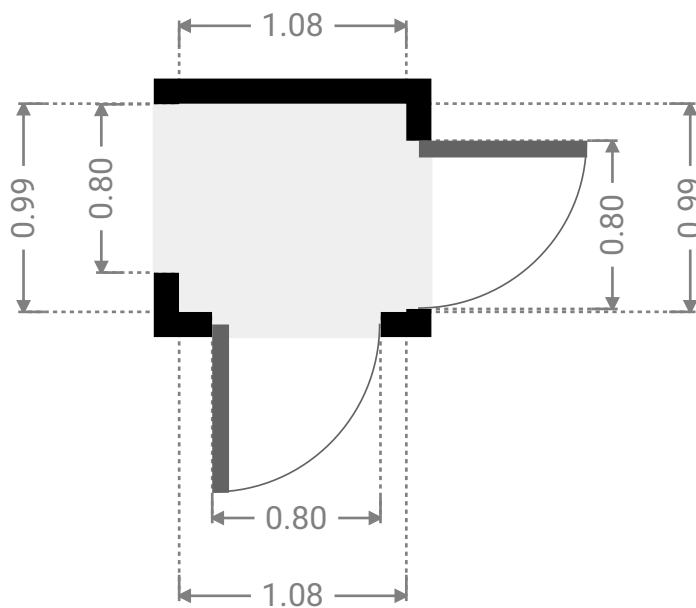
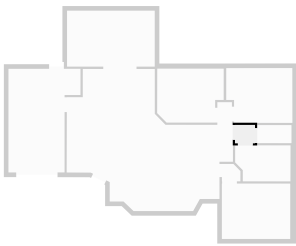
▼ Bathroom
Ground Floor

WIDTH: 3.00 m • LENGTH: 1.95 m
AREA: 5.51 m² • PERIMETER: 9.65 m



▼ Hall
Ground Floor

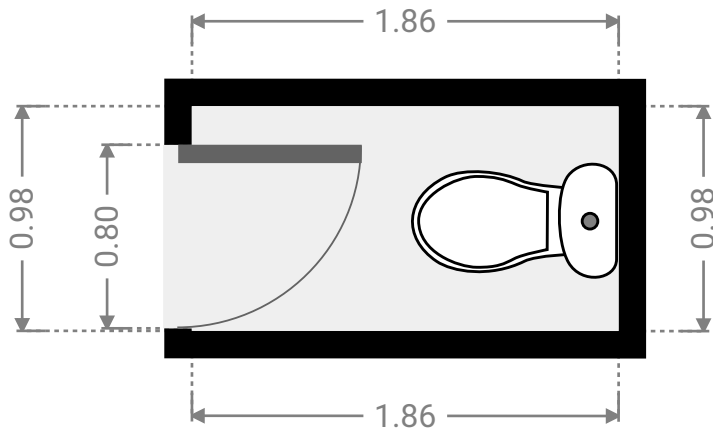
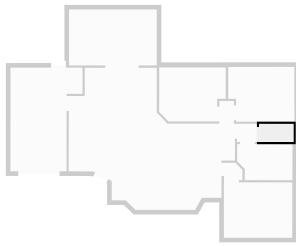
WIDTH: 1.08 m • LENGTH: 0.99 m
AREA: 1.07 m² • PERIMETER: 4.14 m



FLOORS: 1

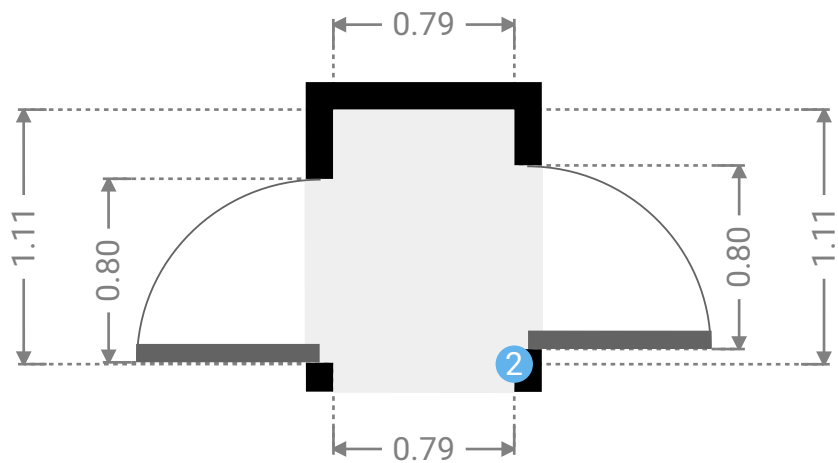
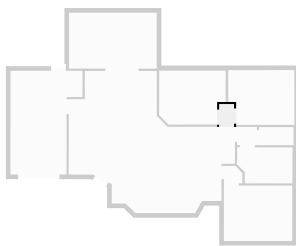
▼ Toilet
Ground Floor

WIDTH: 1.86 m • LENGTH: 0.98 m
AREA: 1.82 m² • PERIMETER: 5.68 m



▼ Hall
Ground Floor

WIDTH: 0.79 m • LENGTH: 1.11 m
AREA: 0.87 m² • PERIMETER: 3.80 m



▼ **Hall**/Ground Floor

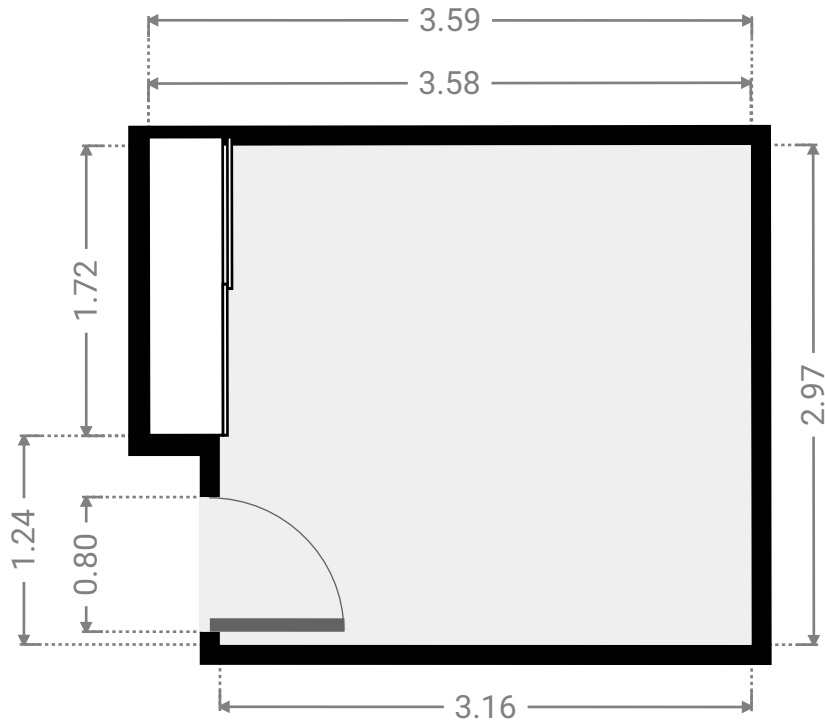
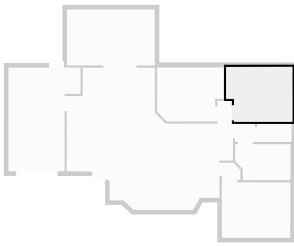
2 **OPENING**

Height
0.00 m



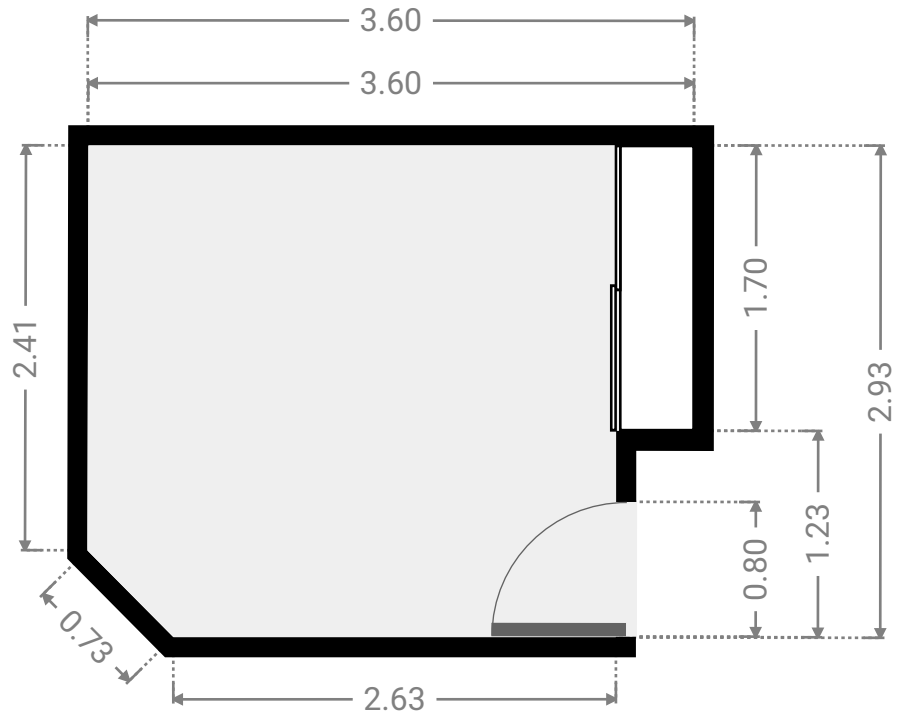
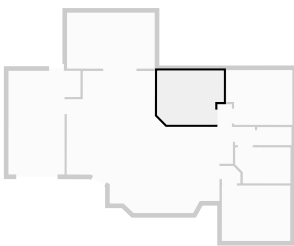
▼ **Bedroom**
Ground Floor

WIDTH: 3.59 m • LENGTH: 2.97 m
AREA: 10.10 m² • PERIMETER: 13.10 m



▼ **Bedroom**
Ground Floor

WIDTH: 3.60 m • LENGTH: 2.93 m
AREA: 9.83 m² • PERIMETER: 12.75 m



▼ Other
Ground Floor

WIDTH: 4.75 m • LENGTH: 3.03 m
AREA: 14.39 m² • PERIMETER: 15.56 m

