

1-16 Mountain Maid Creek Road

SUBMITTED BY

Ray White Rockhampton Casey
stockers@cqoz.com

CREATED ON

2022-03-07

Floors

1

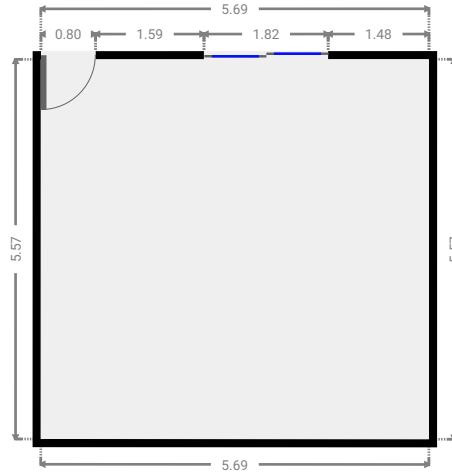
▼ Ground Floor



FLOORS: 1

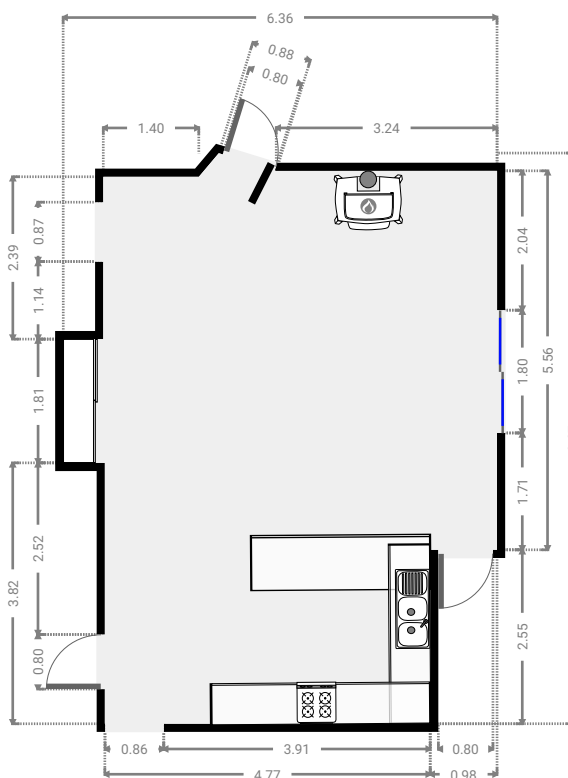
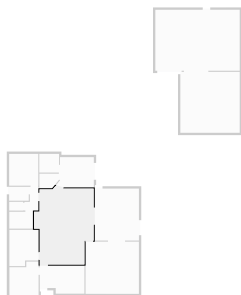
▼ Living Room Ground Floor

WIDTH: 5.69 m • LENGTH: 5.57 m
AREA: 31.68 m² • PERIMETER: 22.52 m



▼ Kitchen Ground Floor

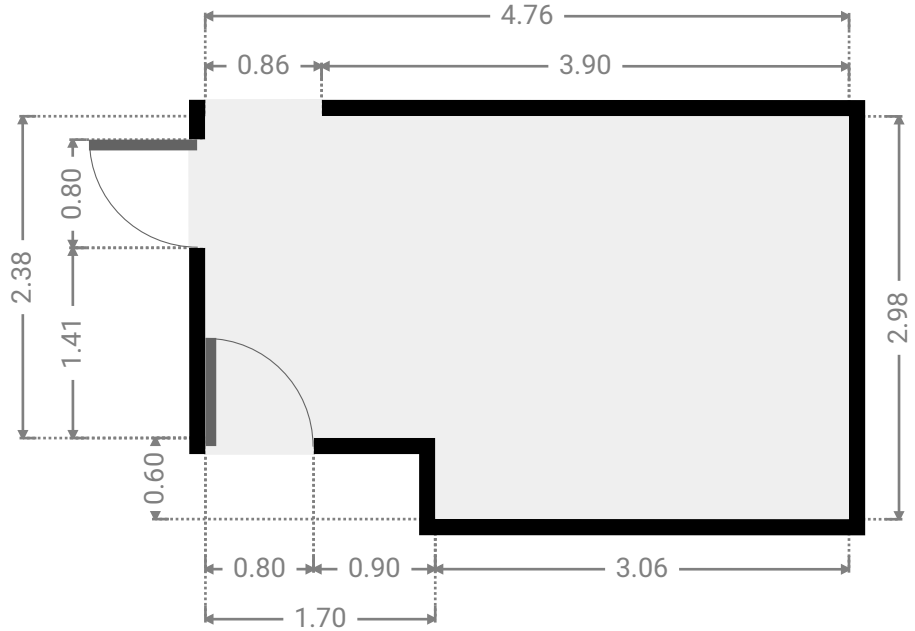
WIDTH: 6.36 m • LENGTH: 8.37 m
AREA: 45.28 m² • PERIMETER: 29.04 m



FLOORS: 1

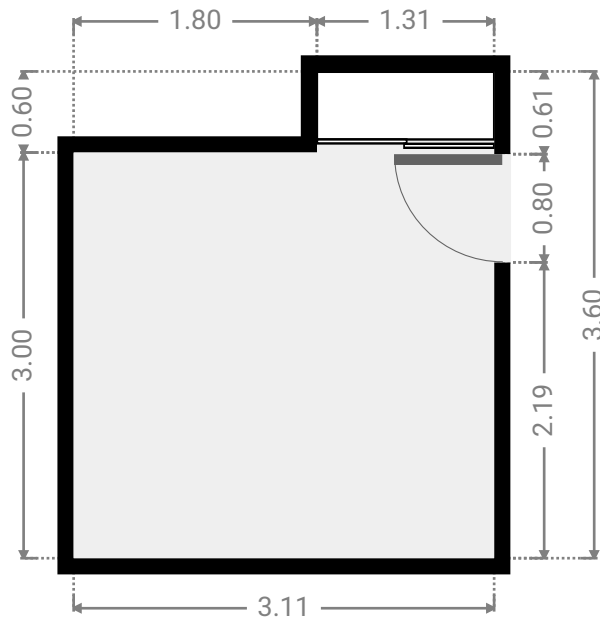
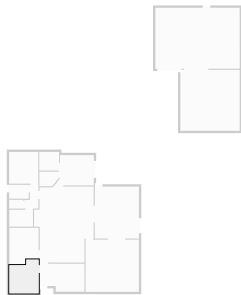
▼ **Living Room**
Ground Floor

WIDTH: 4.76 m • LENGTH: 2.98 m
AREA: 13.16 m² • PERIMETER: 15.48 m



▼ **Bedroom**
Ground Floor

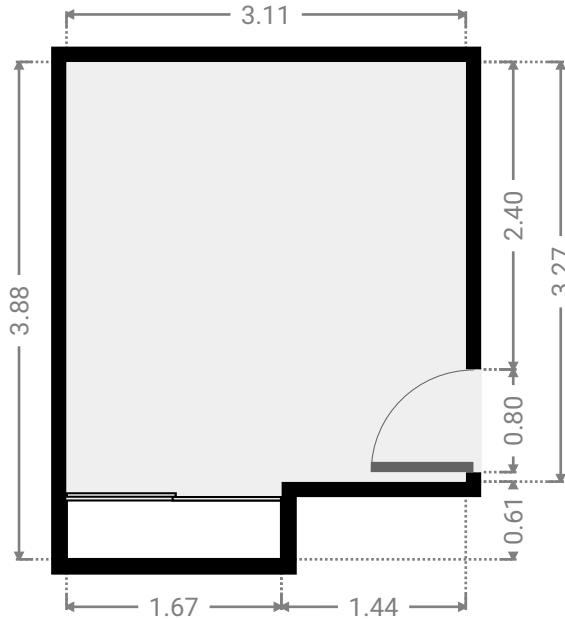
WIDTH: 3.11 m • LENGTH: 3.60 m
AREA: 10.12 m² • PERIMETER: 13.42 m



FLOORS: 1

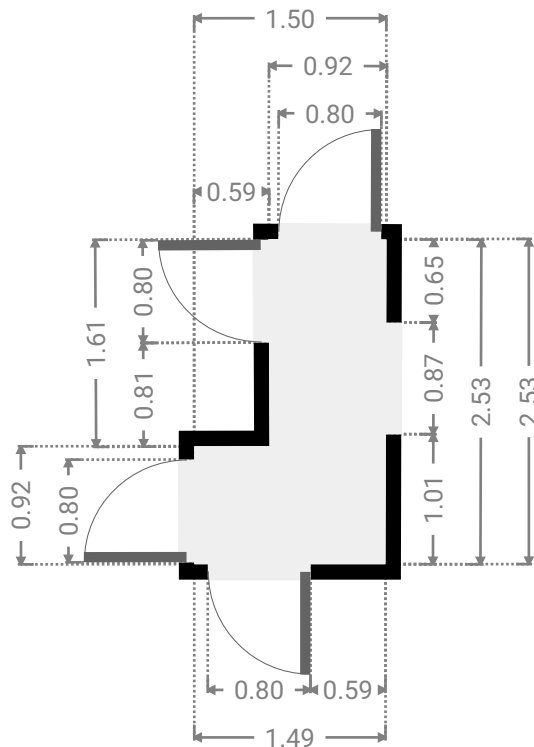
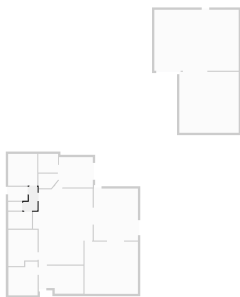
▼ **Bedroom**
Ground Floor

WIDTH: 3.11 m • LENGTH: 3.88 m
AREA: 11.19 m² • PERIMETER: 13.97 m



▼ **Hall**
Ground Floor

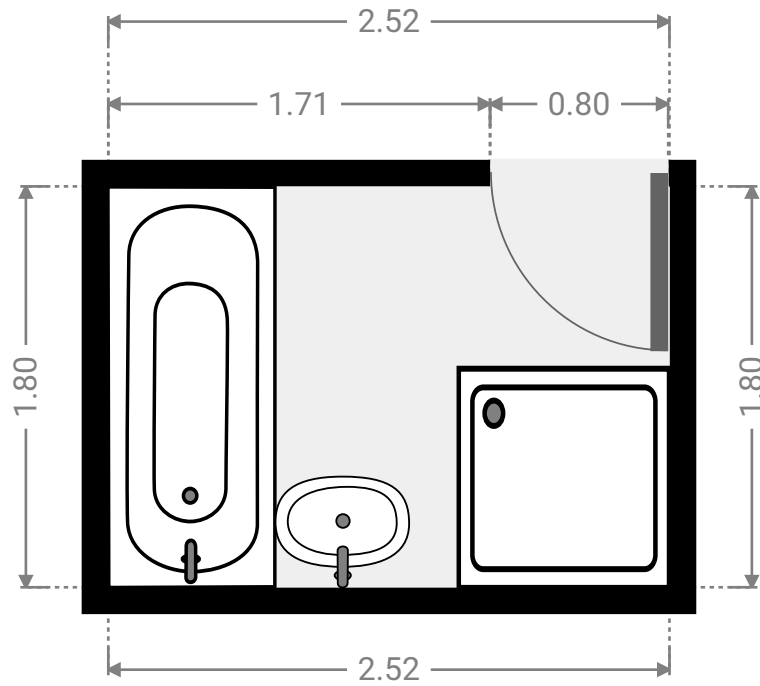
WIDTH: 1.50 m • LENGTH: 2.53 m
AREA: 2.84 m² • PERIMETER: 8.06 m



FLOORS: 1

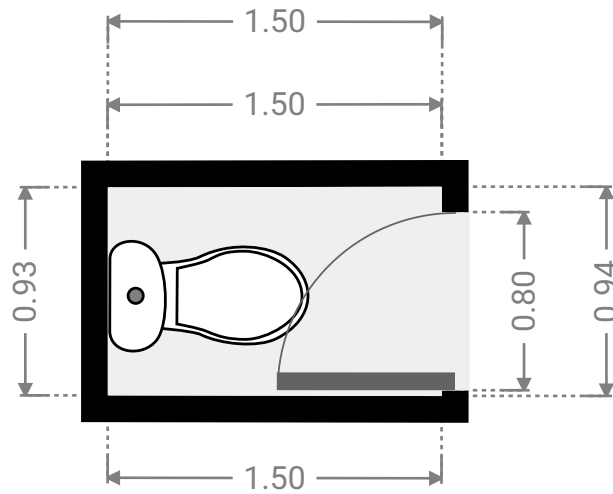
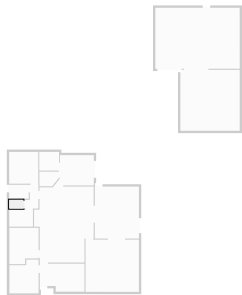
▼ **Bathroom**
Ground Floor

WIDTH: 2.52 m • LENGTH: 1.80 m
AREA: 4.54 m² • PERIMETER: 8.64 m



▼ **Toilet**
Ground Floor

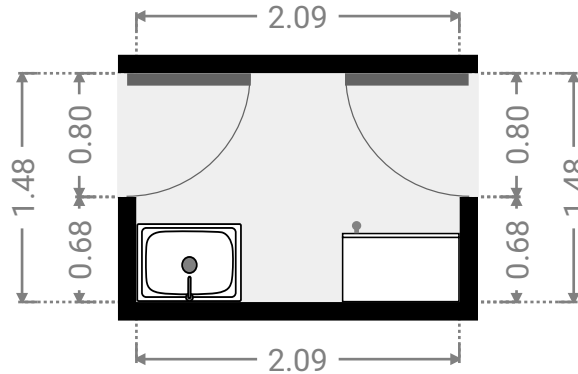
WIDTH: 1.50 m • LENGTH: 0.94 m
AREA: 1.41 m² • PERIMETER: 4.87 m



FLOORS: 1

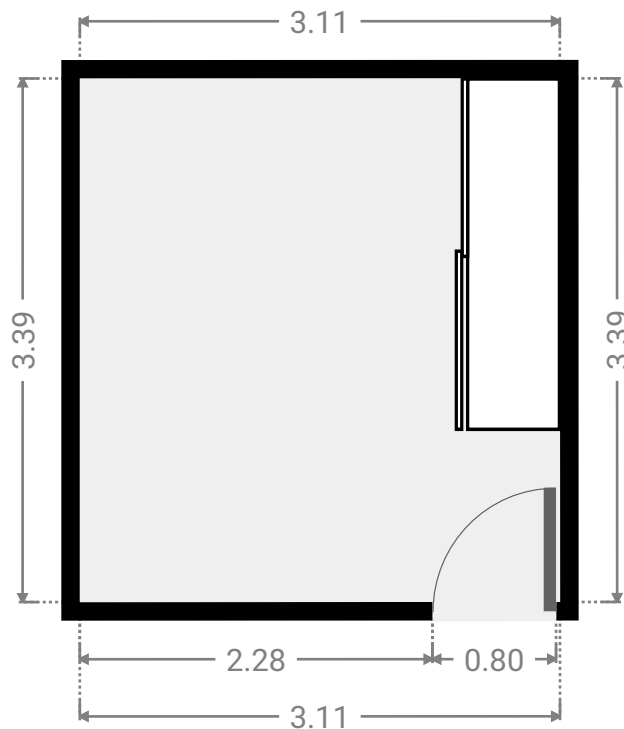
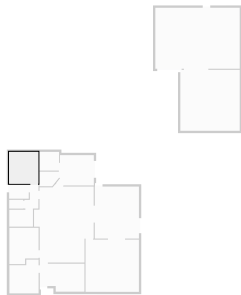
▼ **Laundry Room**
Ground Floor

WIDTH: 2.09 m • LENGTH: 1.48 m
AREA: 3.09 m² • PERIMETER: 7.14 m



▼ **Bedroom**
Ground Floor

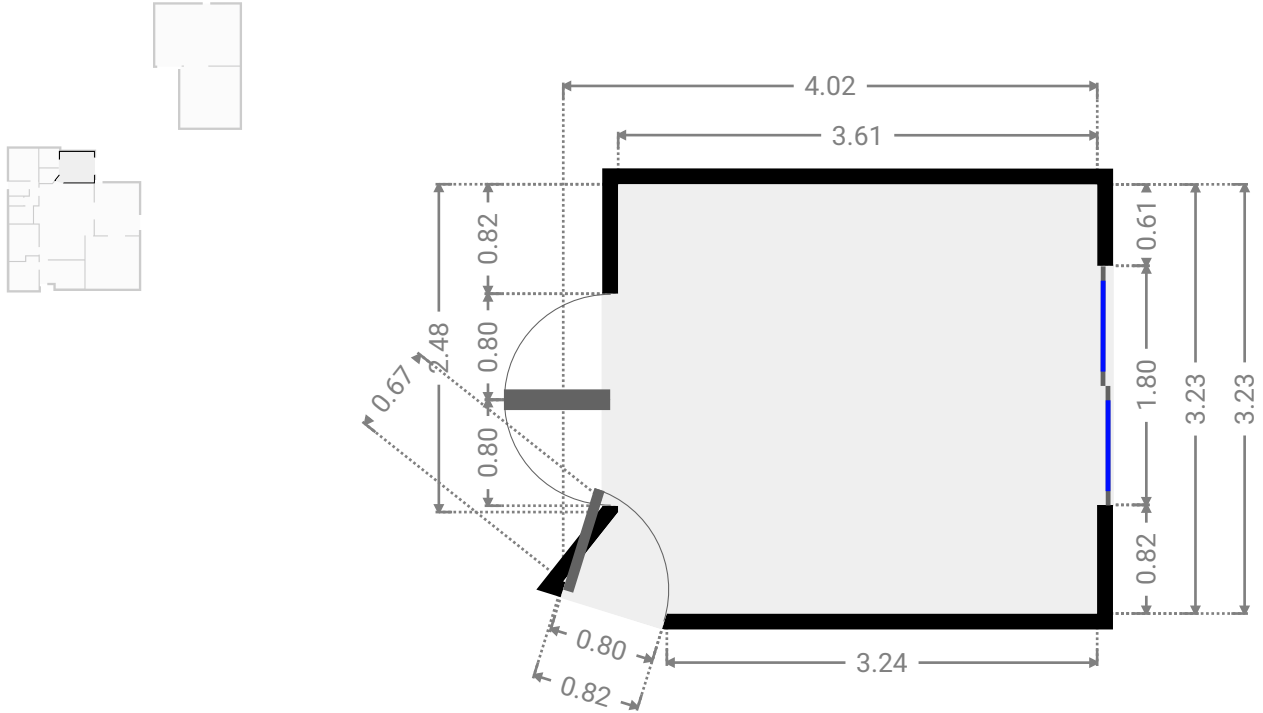
WIDTH: 3.11 m • LENGTH: 3.39 m
AREA: 10.53 m² • PERIMETER: 12.99 m



FLOORS: 1

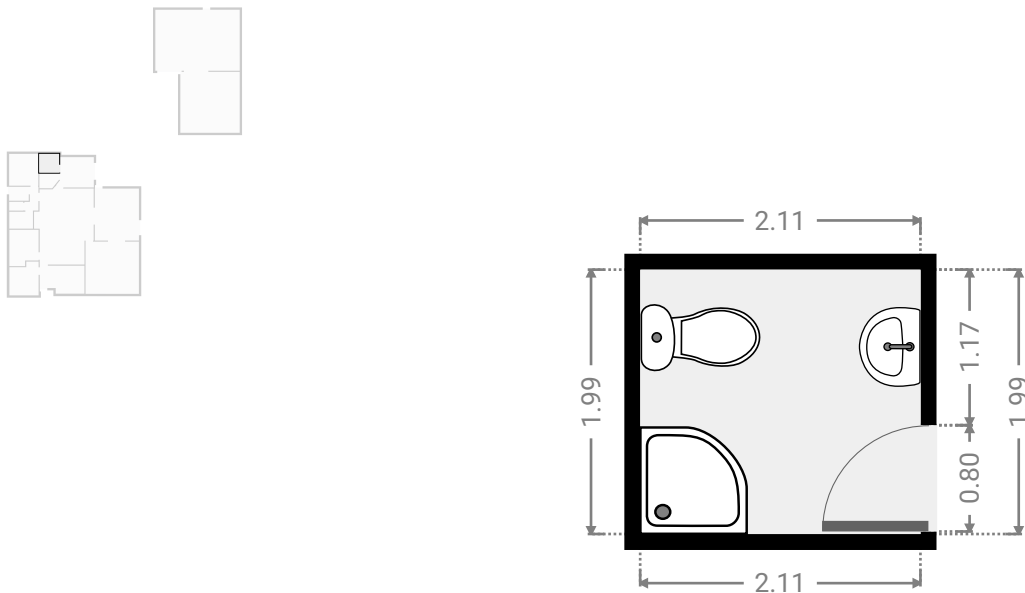
▼ Primary Bedroom
Ground Floor

WIDTH: 4.02 m • LENGTH: 3.23 m
AREA: 11.76 m² • PERIMETER: 14.03 m



▼ Bathroom
Ground Floor

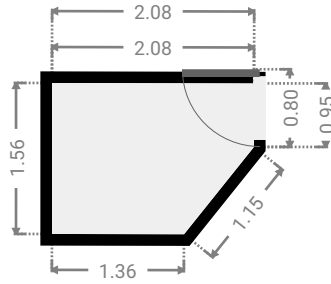
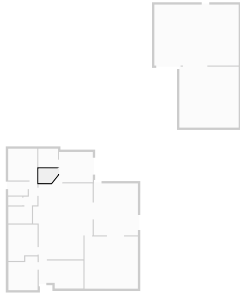
WIDTH: 2.11 m • LENGTH: 1.99 m
AREA: 4.20 m² • PERIMETER: 8.20 m



FLOORS: 1

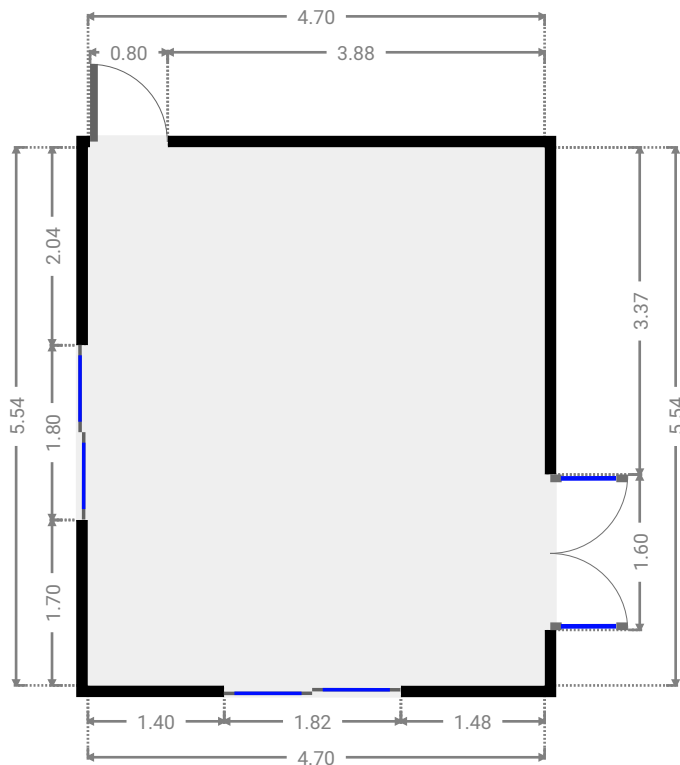
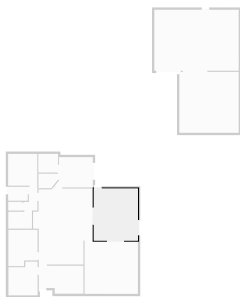
▼ **Closet**
Ground Floor

WIDTH: 2.08 m • LENGTH: 1.56 m
AREA: 2.91 m² • PERIMETER: 6.80 m



▼ **Other**
Ground Floor

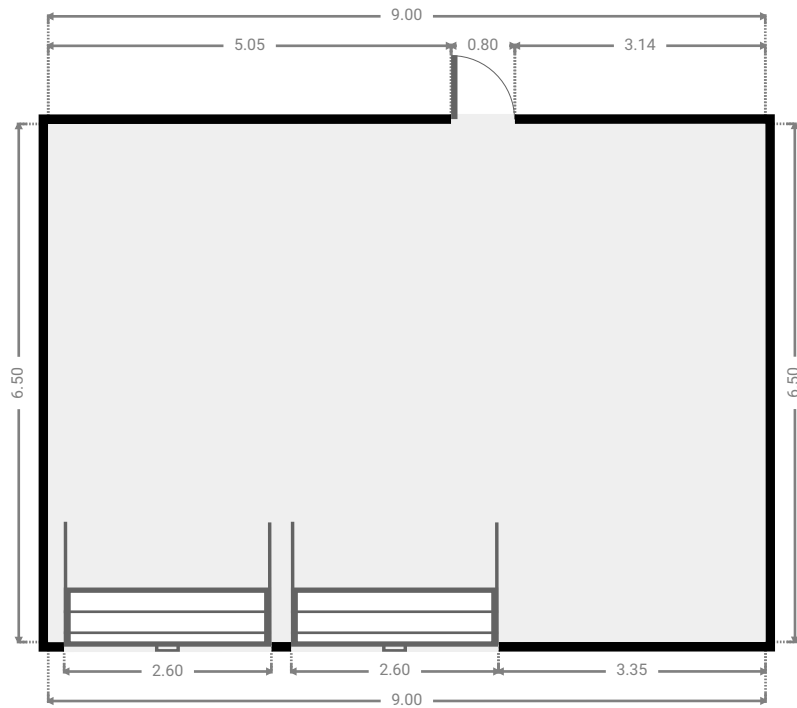
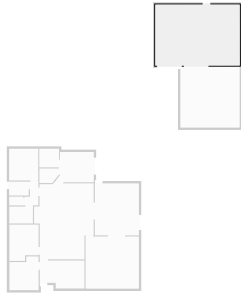
WIDTH: 4.70 m • LENGTH: 5.54 m
AREA: 26.07 m² • PERIMETER: 20.49 m



FLOORS: 1

▼ Other
Ground Floor

WIDTH: 9.00 m • LENGTH: 6.50 m
AREA: 58.49 m² • PERIMETER: 31.00 m



▼ Other
Ground Floor

WIDTH: 6.33 m • LENGTH: 6.50 m
AREA: 41.14 m² • PERIMETER: 25.66 m

