

# 1 Hovia court

**SUBMITTED BY**

Ray White Rockhampton Casey  
stockers@cqoz.com

---

**CREATED ON**

2022-08-24

---

**Floors**

1

---

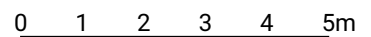
# 1 Hovia court

FLOORS: 1

## ▼ Ground Floor

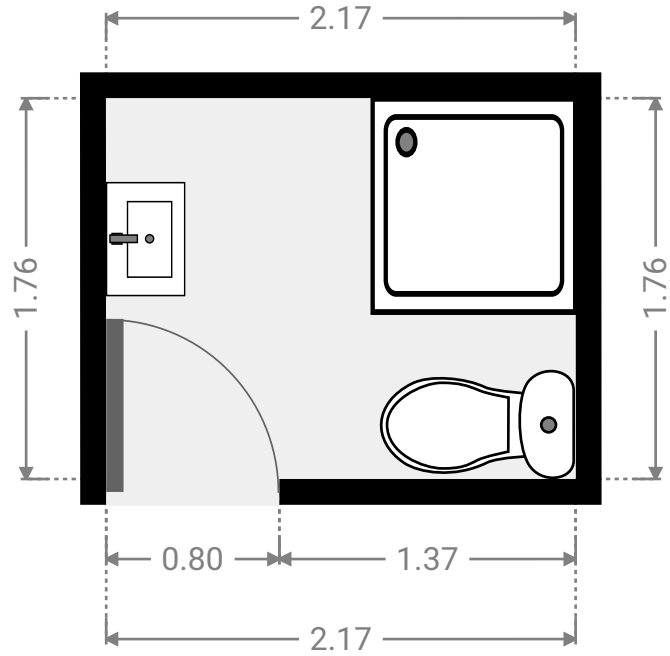
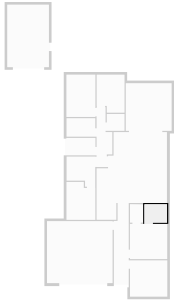


THIS FLOORPLAN IS PROVIDED WITHOUT WARRANTY OF ANY KIND. SENSOPIA DISCLAIMS ANY WARRANTY INCLUDING, WITHOUT LIMITATION, SATISFACTORY QUALITY OR ACCURACY OF DIMENSIONS.



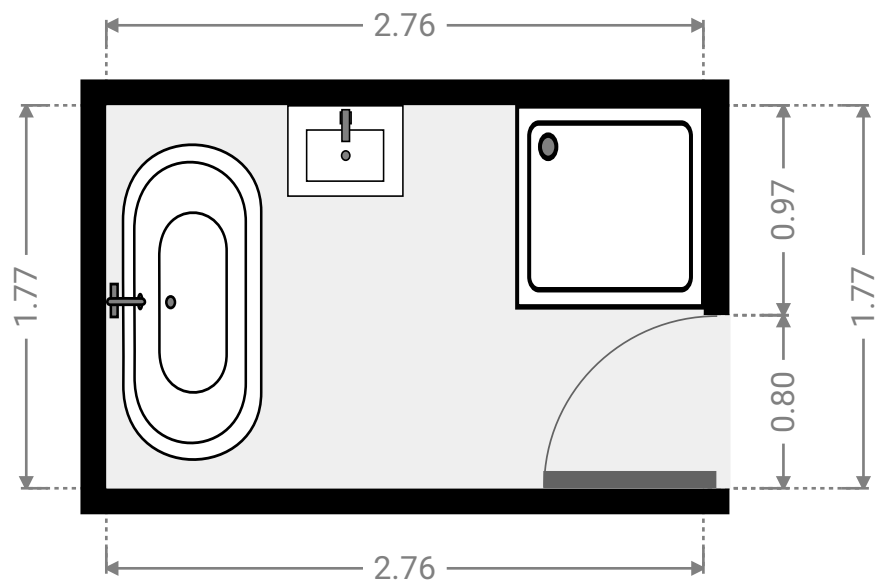
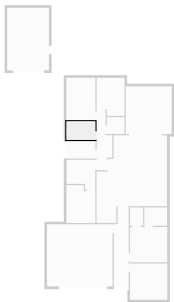
## ▼ Bathroom Ground Floor

WIDTH: 2.17 m • LENGTH: 1.76 m  
AREA: 3.82 m<sup>2</sup> • PERIMETER: 7.86 m



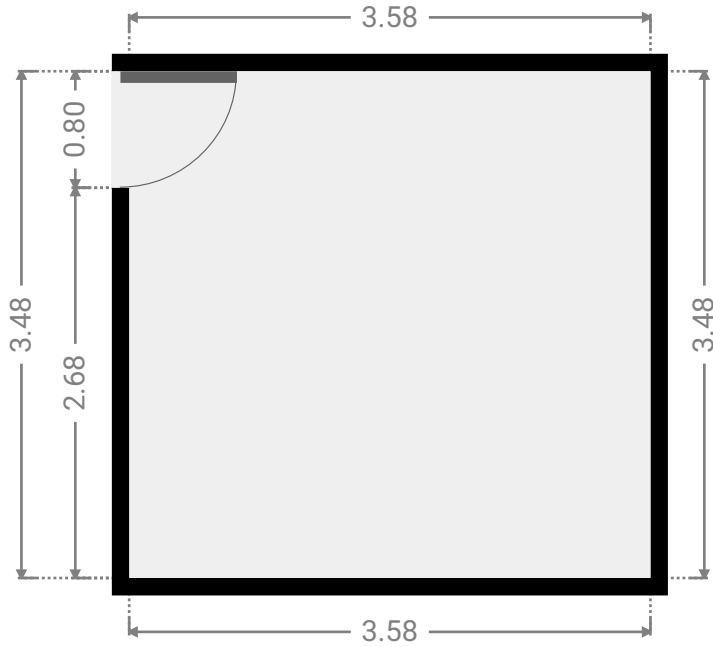
## ▼ Bathroom Ground Floor

WIDTH: 2.76 m • LENGTH: 1.77 m  
AREA: 4.89 m<sup>2</sup> • PERIMETER: 9.06 m



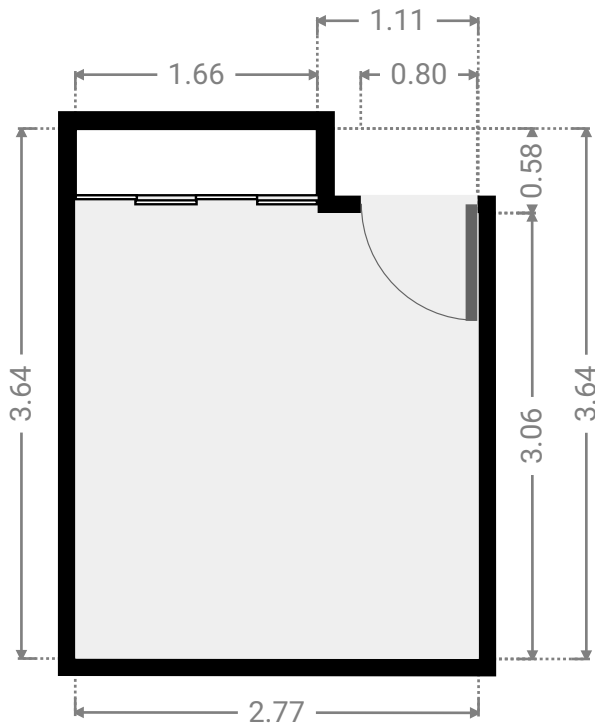
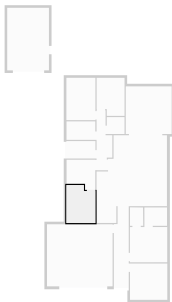
## ▼ Bedroom Ground Floor

WIDTH: 3.58 m • LENGTH: 3.48 m  
AREA: 12.46 m<sup>2</sup> • PERIMETER: 14.12 m



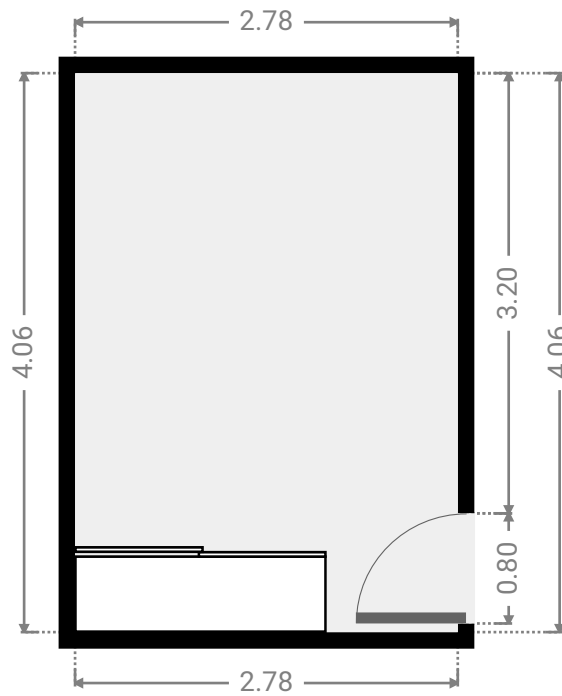
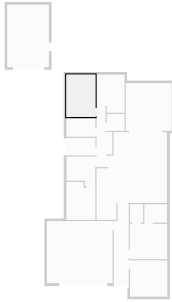
## ▼ Bedroom Ground Floor

WIDTH: 2.77 m • LENGTH: 3.64 m  
AREA: 9.44 m<sup>2</sup> • PERIMETER: 12.82 m



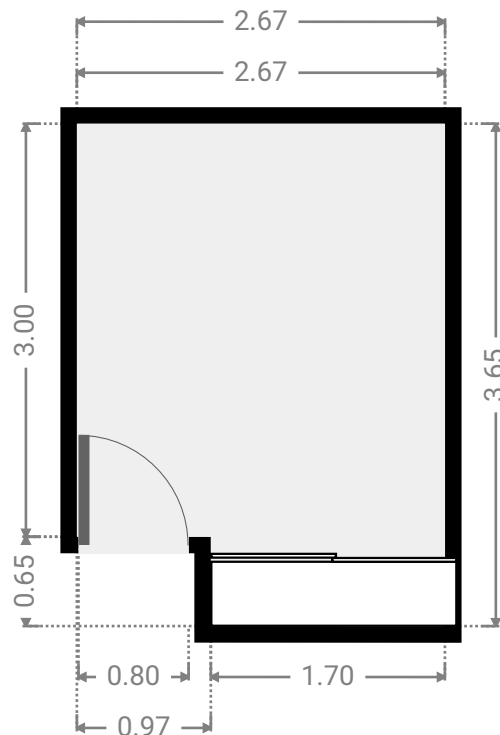
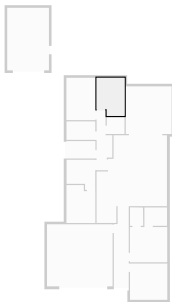
## ▼ Bedroom Ground Floor

WIDTH: 2.78 m • LENGTH: 4.06 m  
AREA: 11.29 m<sup>2</sup> • PERIMETER: 13.68 m



## ▼ Bedroom Ground Floor

WIDTH: 2.67 m • LENGTH: 3.65 m  
AREA: 9.13 m<sup>2</sup> • PERIMETER: 12.65 m

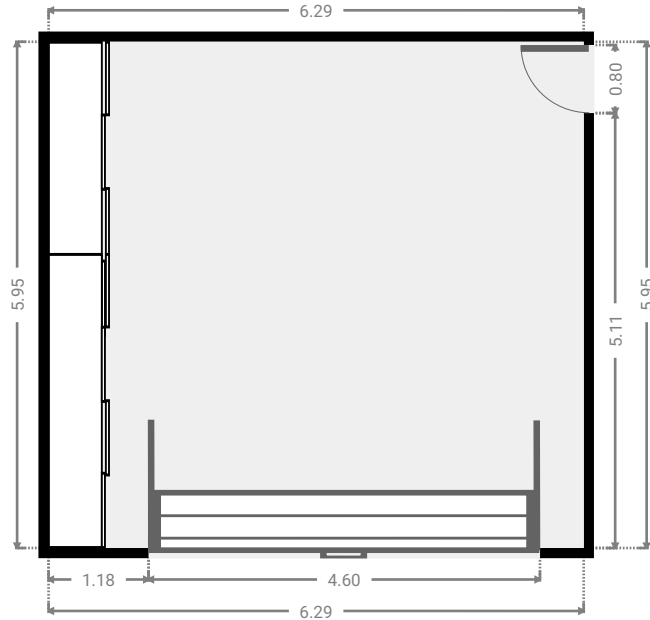
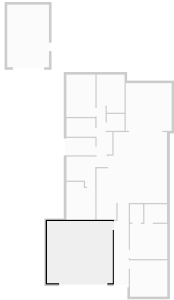


# 1 Hovia court

FLOORS: 1

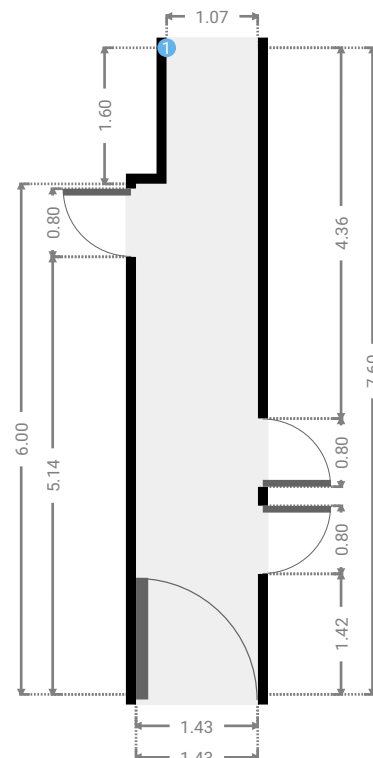
## ▼ Garage Ground Floor

WIDTH: 6.29 m • LENGTH: 5.95 m  
AREA: 37.43 m<sup>2</sup> • PERIMETER: 24.48 m



## ▼ Hall Ground Floor

WIDTH: 1.43 m • LENGTH: 7.60 m  
AREA: 10.29 m<sup>2</sup> • PERIMETER: 18.06 m



# 1 Hovia court

FLOORS: 1

## ▼ Hall/Ground Floor

### 1 OPENING

Height  
0.00 m



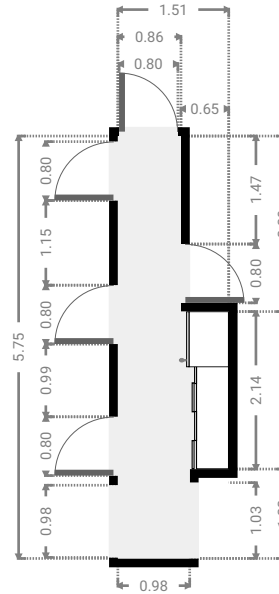
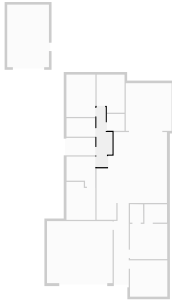
# 1 Hovia court

FLOORS: 1



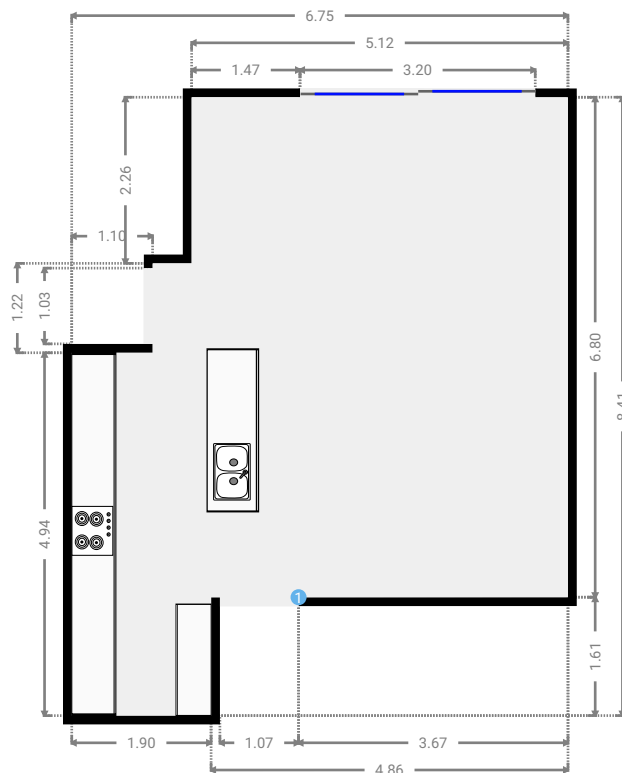
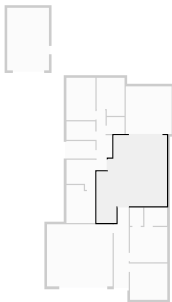
## ▼ Hall Ground Floor

WIDTH: 1.51 m • LENGTH: 5.75 m  
AREA: 6.47 m<sup>2</sup> • PERIMETER: 14.51 m

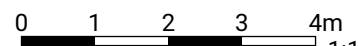


## ▼ Kitchen Ground Floor

WIDTH: 6.75 m • LENGTH: 8.41 m  
AREA: 43.94 m<sup>2</sup> • PERIMETER: 30.32 m



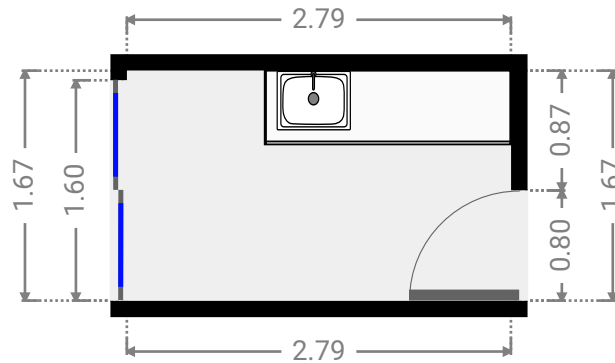
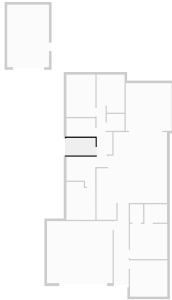
THIS FLOORPLAN IS PROVIDED WITHOUT WARRANTY OF ANY KIND. SENSOPIA DISCLAIMS ANY WARRANTY INCLUDING, WITHOUT LIMITATION, SATISFACTORY QUALITY OR ACCURACY OF DIMENSIONS.





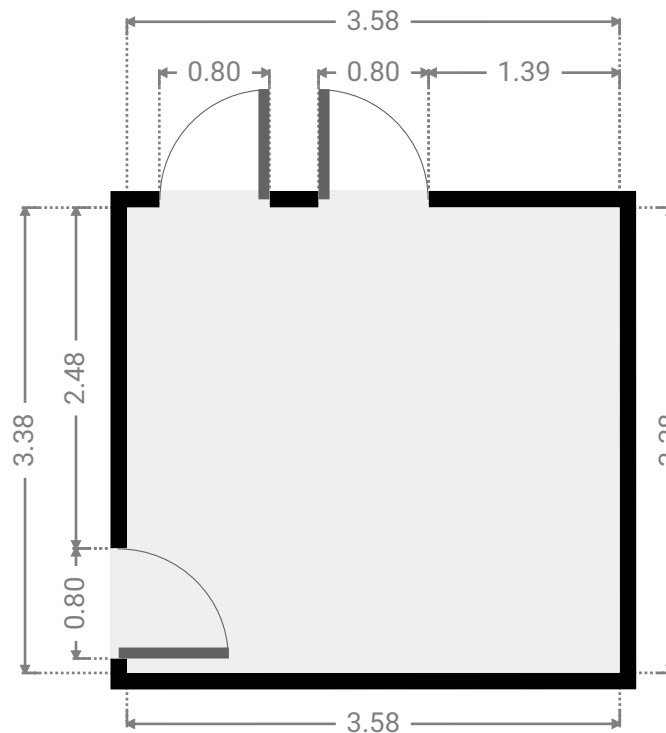
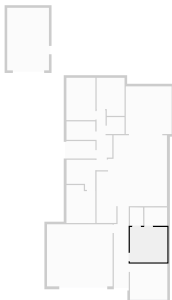
## ▼ Laundry Room Ground Floor

WIDTH: 2.79 m • LENGTH: 1.67 m  
AREA: 4.66 m<sup>2</sup> • PERIMETER: 8.92 m



## ▼ Living Room Ground Floor

WIDTH: 3.58 m • LENGTH: 3.38 m  
AREA: 12.10 m<sup>2</sup> • PERIMETER: 13.92 m

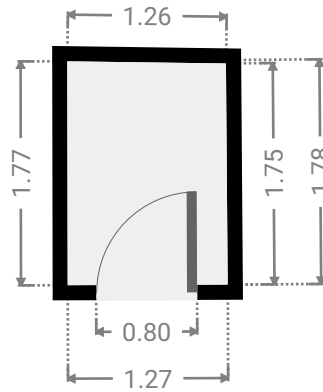
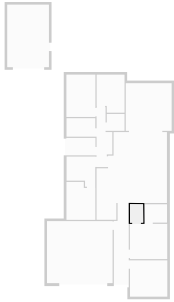


# 1 Hovia court

FLOORS: 1

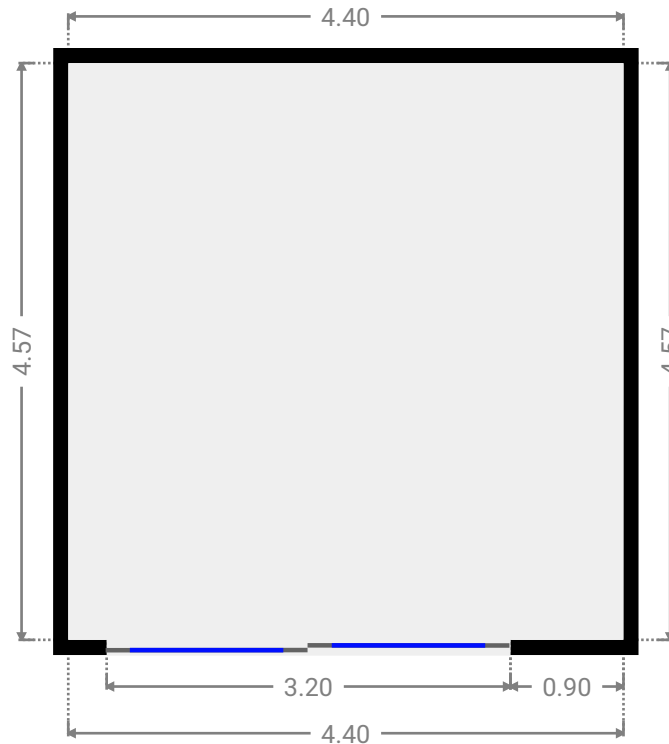
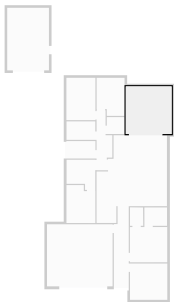
## ▼ Closet Ground Floor

WIDTH: 1.27 m • LENGTH: 1.78 m  
AREA: 2.23 m<sup>2</sup> • PERIMETER: 6.06 m



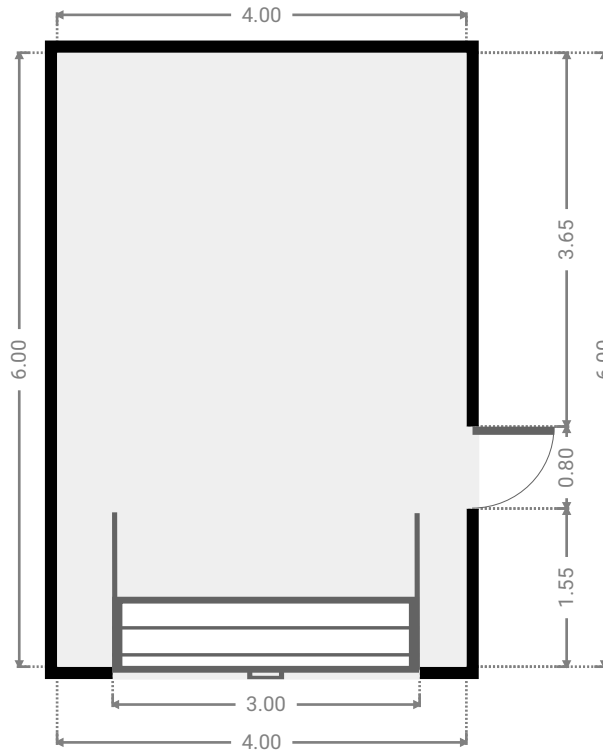
## ▼ Other Ground Floor

WIDTH: 4.40 m • LENGTH: 4.57 m  
AREA: 20.11 m<sup>2</sup> • PERIMETER: 17.94 m



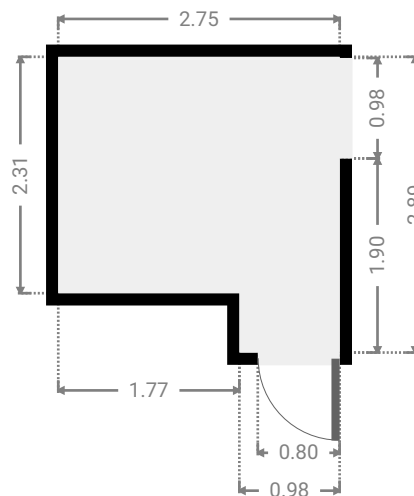
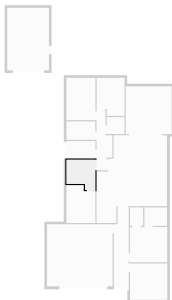
## ▼ Other Ground Floor

WIDTH: 4.00 m • LENGTH: 6.00 m  
AREA: 24.00 m<sup>2</sup> • PERIMETER: 20.00 m



## ▼ Study Ground Floor

WIDTH: 2.75 m • LENGTH: 2.89 m  
AREA: 6.92 m<sup>2</sup> • PERIMETER: 11.28 m



## ▼ Toilet Ground Floor

WIDTH: 1.70 m • LENGTH: 1.62 m  
AREA: 2.75 m<sup>2</sup> • PERIMETER: 6.64 m

