

1/345 Shields Avenue

SUBMITTED BY

Ray White Rockhampton Casey
stockers@cqoz.com

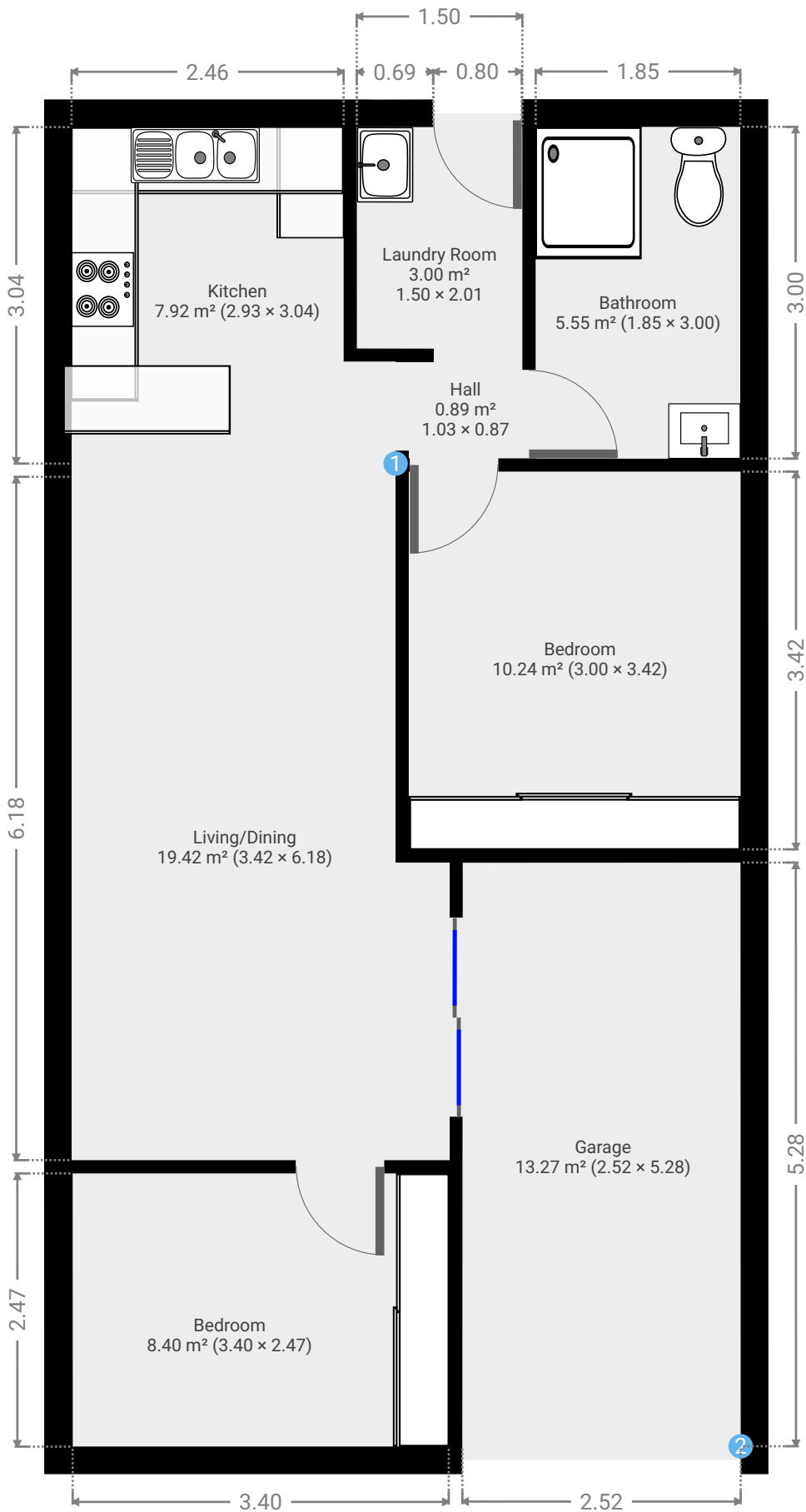
CREATED ON

2021-11-16

Floors

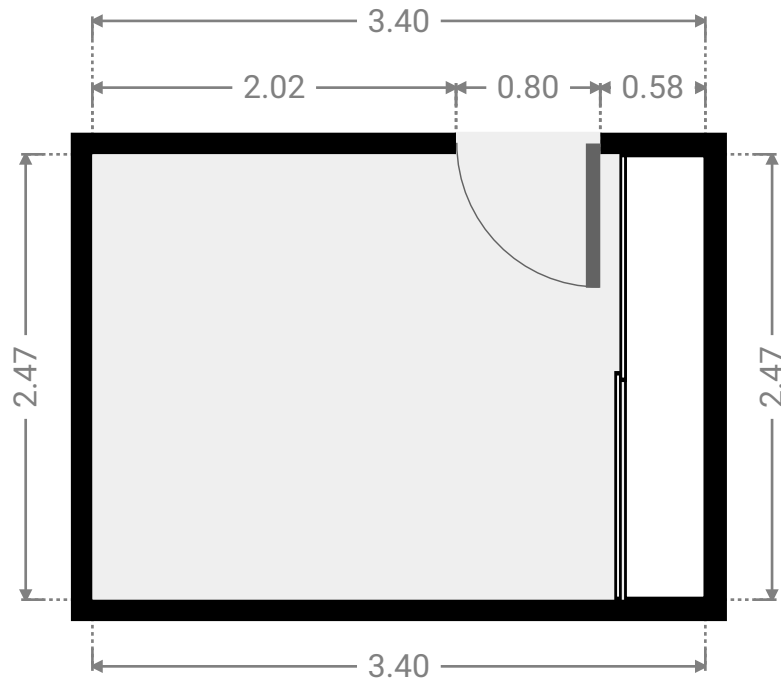
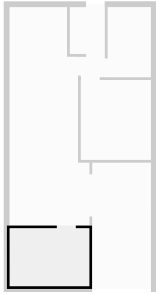
1

▼ Ground Floor



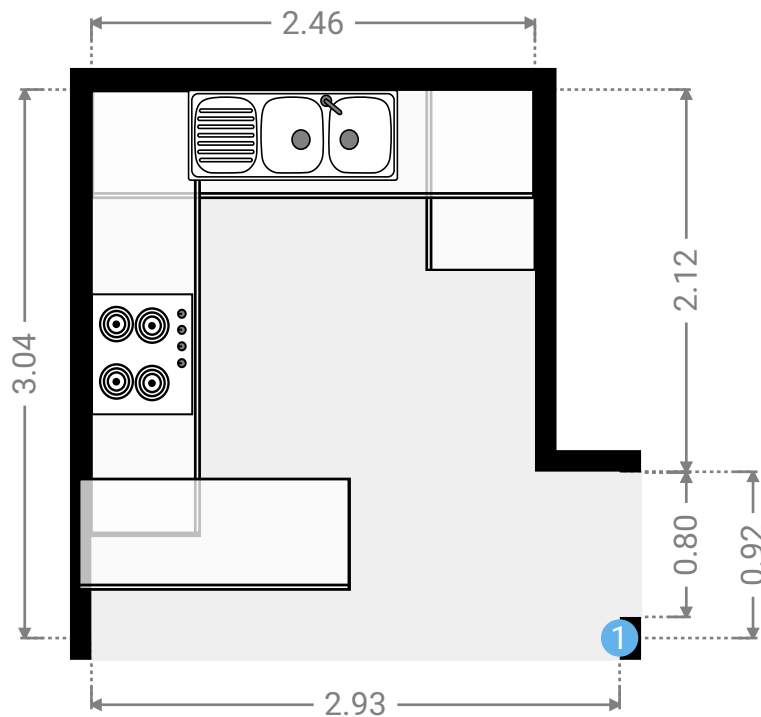
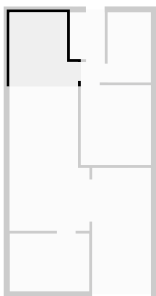
▼ **Bedroom**
Ground Floor

WIDTH: 3.40 m • LENGTH: 2.47 m
AREA: 8.40 m² • PERIMETER: 11.74 m



▼ **Kitchen**
Ground Floor

WIDTH: 2.93 m • LENGTH: 3.04 m
AREA: 7.92 m² • PERIMETER: 11.94 m



▼ **Kitchen**/Ground Floor

1 **OPENING**

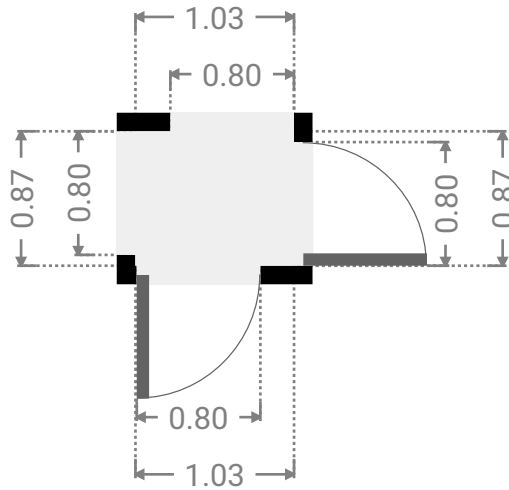
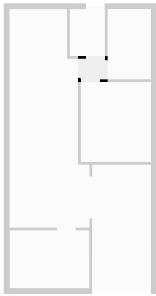
Height
0.00 m



FLOORS: 1

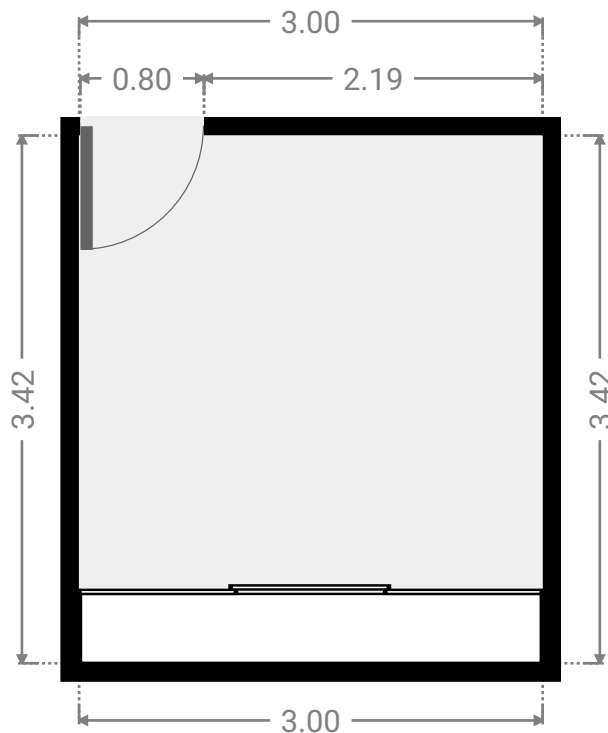
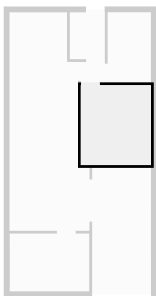
▼ **Hall**
Ground Floor

WIDTH: 1.03 m • LENGTH: 0.87 m
AREA: 0.89 m² • PERIMETER: 3.79 m



▼ **Bedroom**
Ground Floor

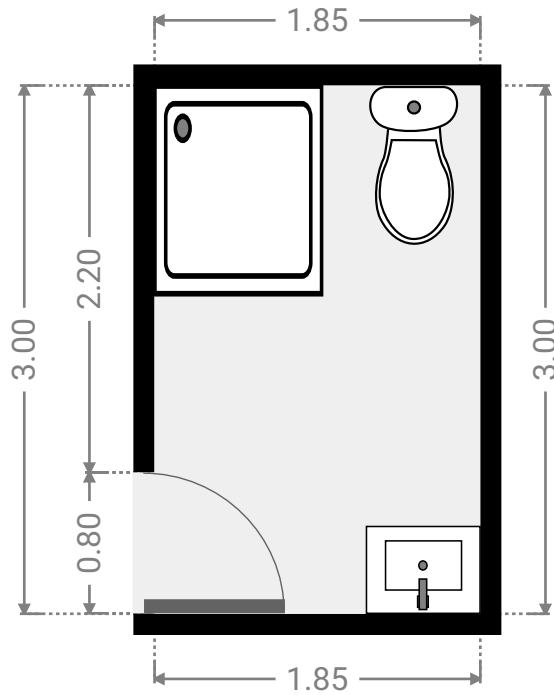
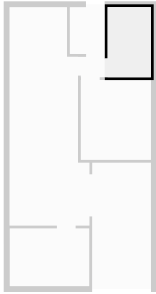
WIDTH: 3.00 m • LENGTH: 3.42 m
AREA: 10.24 m² • PERIMETER: 12.83 m



FLOORS: 1

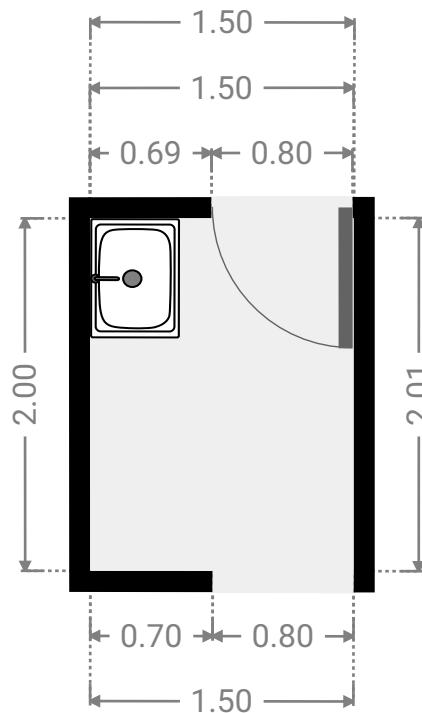
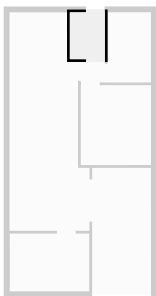
▼ Bathroom
Ground Floor

WIDTH: 1.85 m • LENGTH: 3.00 m
AREA: 5.55 m² • PERIMETER: 9.70 m



▼ Laundry Room
Ground Floor

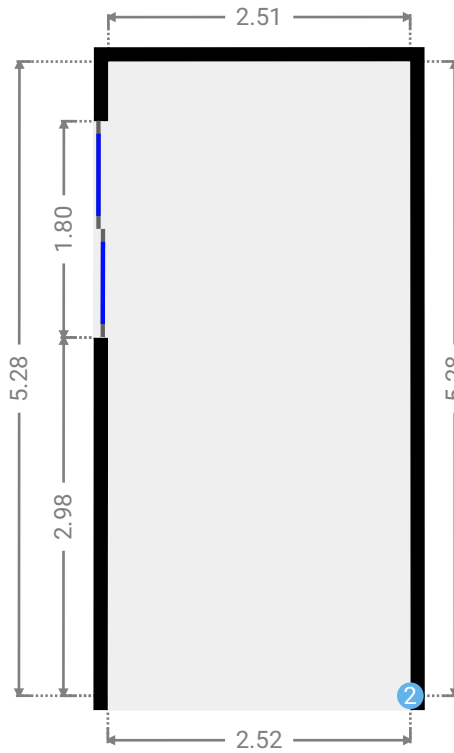
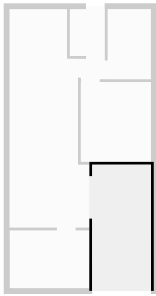
WIDTH: 1.50 m • LENGTH: 2.01 m
AREA: 3.00 m² • PERIMETER: 7.00 m



FLOORS: 1

▼ **Garage**
Ground Floor

WIDTH: 2.52 m • LENGTH: 5.28 m
AREA: 13.27 m² • PERIMETER: 15.58 m



▼ **Garage/**Ground Floor

2 OPENING

Height
0.00 m



▼ **Living/Dining**
Ground Floor

WIDTH: 3.42 m • LENGTH: 6.18 m
AREA: 19.42 m² • PERIMETER: 19.20 m

