

# 1/342 Marsh Avenue

**SUBMITTED BY**

Ray White Rockhampton Casey  
stockers@cqoz.com

---

**CREATED ON**

2022-08-15

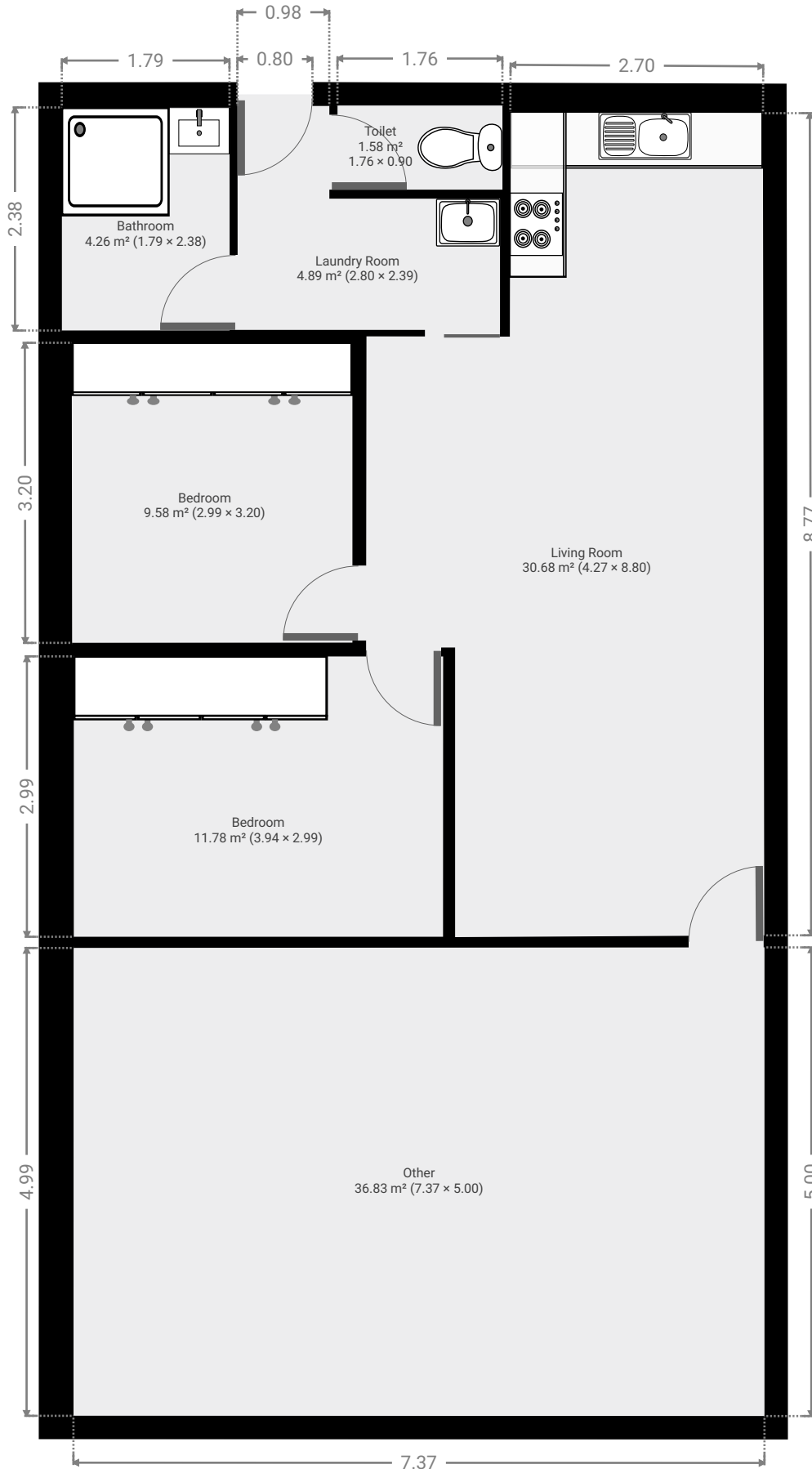
---

**Floors**

1

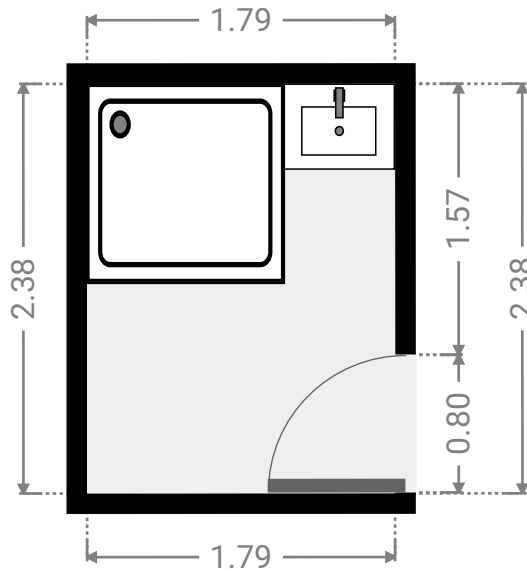
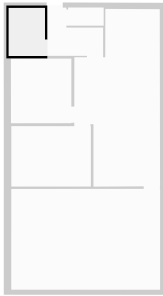
---

▼ Ground Floor



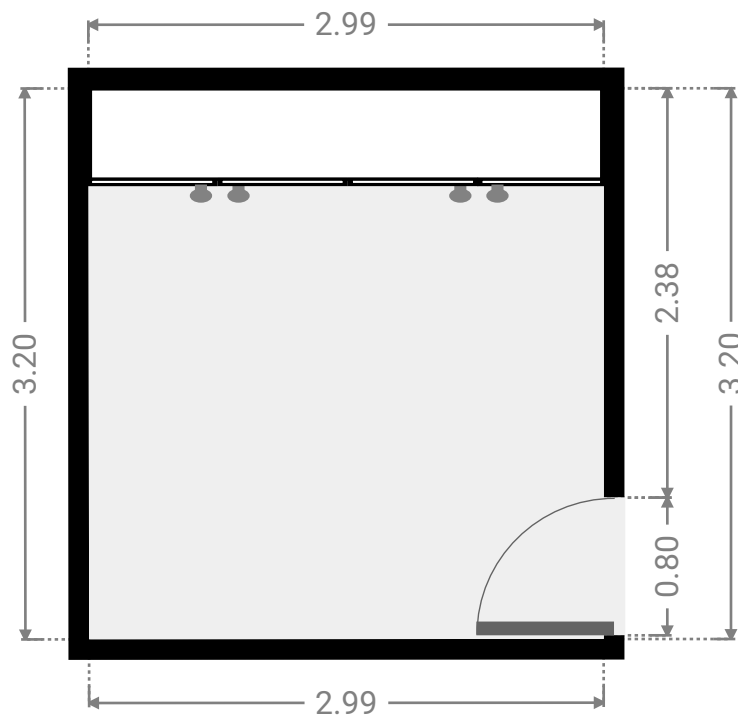
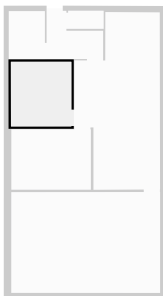
▼ Bathroom  
Ground Floor

WIDTH: 1.79 m • LENGTH: 2.38 m  
AREA: 4.26 m<sup>2</sup> • PERIMETER: 8.34 m



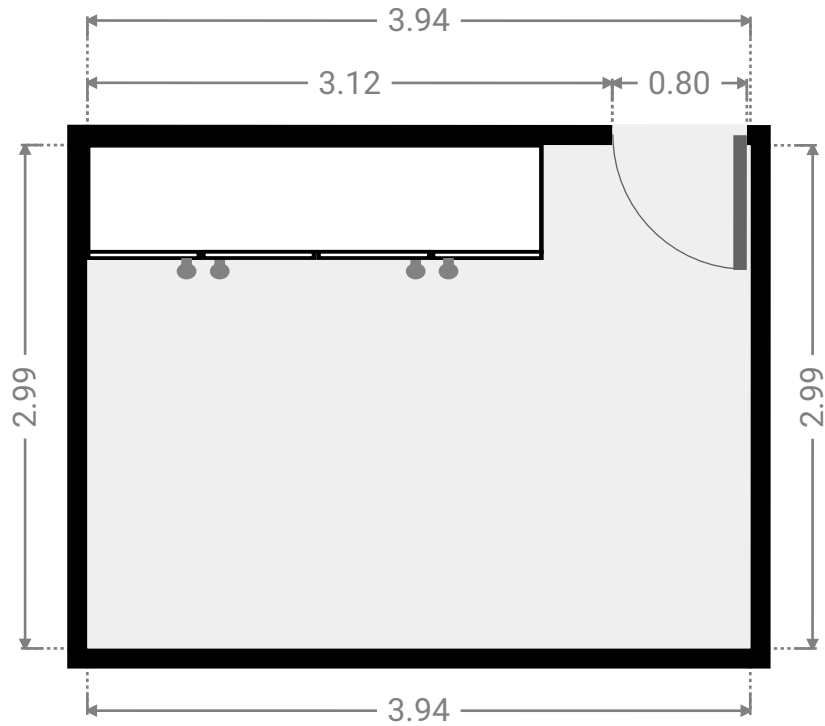
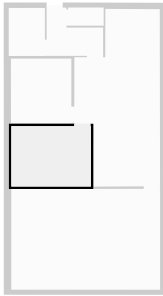
▼ Bedroom  
Ground Floor

WIDTH: 2.99 m • LENGTH: 3.20 m  
AREA: 9.58 m<sup>2</sup> • PERIMETER: 12.39 m



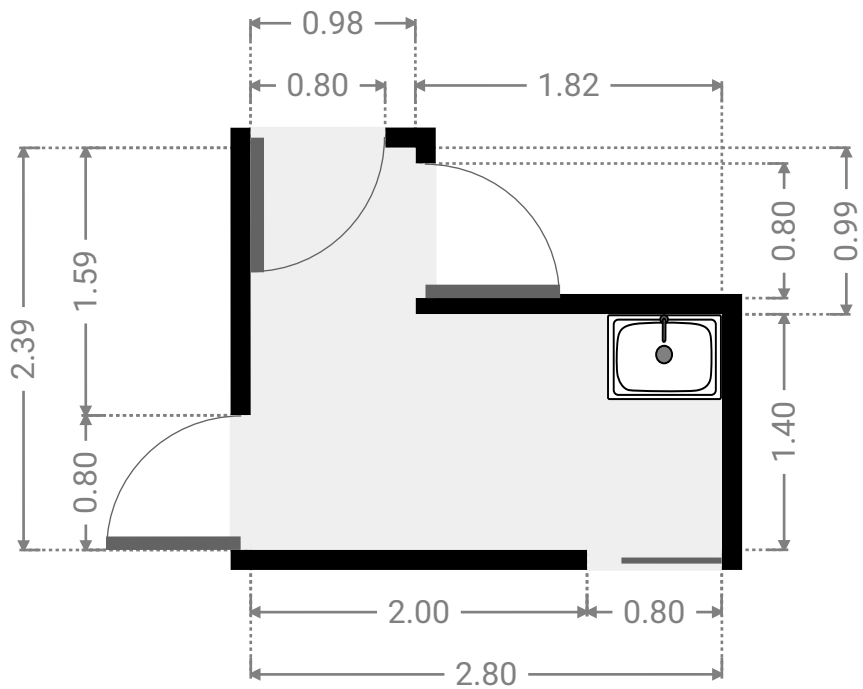
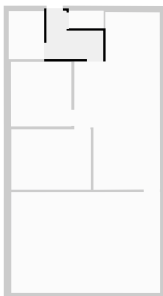
▼ **Bedroom**  
Ground Floor

WIDTH: 3.94 m • LENGTH: 2.99 m  
AREA: 11.78 m<sup>2</sup> • PERIMETER: 13.86 m



▼ **Laundry Room**  
Ground Floor

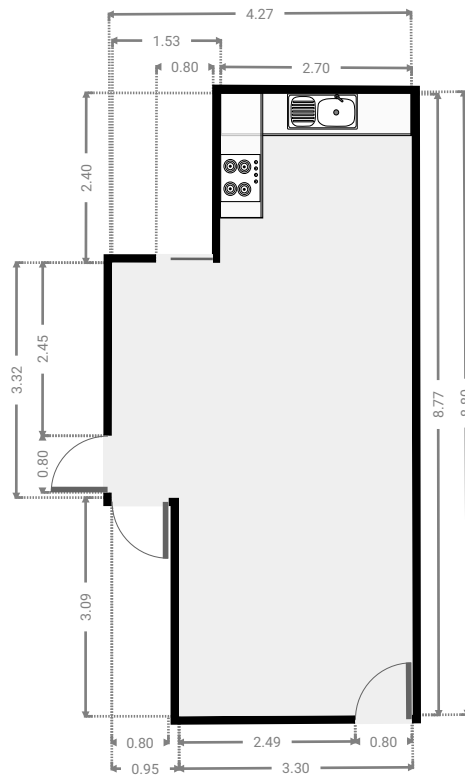
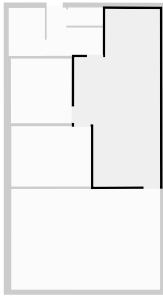
WIDTH: 2.80 m • LENGTH: 2.39 m  
AREA: 4.89 m<sup>2</sup> • PERIMETER: 10.38 m



FLOORS: 1

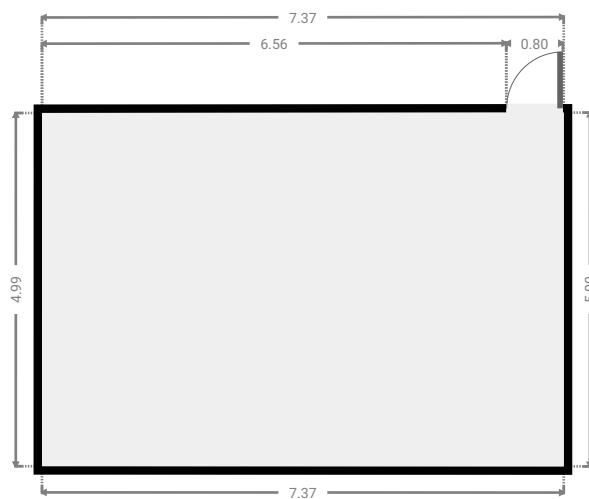
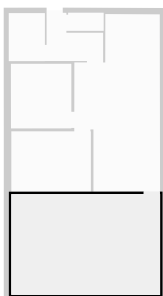
▼ **Living Room**  
Ground Floor

WIDTH: 4.27 m • LENGTH: 8.80 m  
AREA: 30.68 m<sup>2</sup> • PERIMETER: 26.06 m



▼ **Other**  
Ground Floor

WIDTH: 7.37 m • LENGTH: 5.00 m  
AREA: 36.83 m<sup>2</sup> • PERIMETER: 24.74 m



▼ Toilet  
Ground Floor

WIDTH: 1.76 m • LENGTH: 0.90 m  
AREA: 1.58 m<sup>2</sup> • PERIMETER: 5.32 m

