

# 1/34 Bishop Street

**SUBMITTED BY**

Ray White Rockhampton Casey  
stockers@cqoz.com

---

**CREATED ON**

2022-03-09

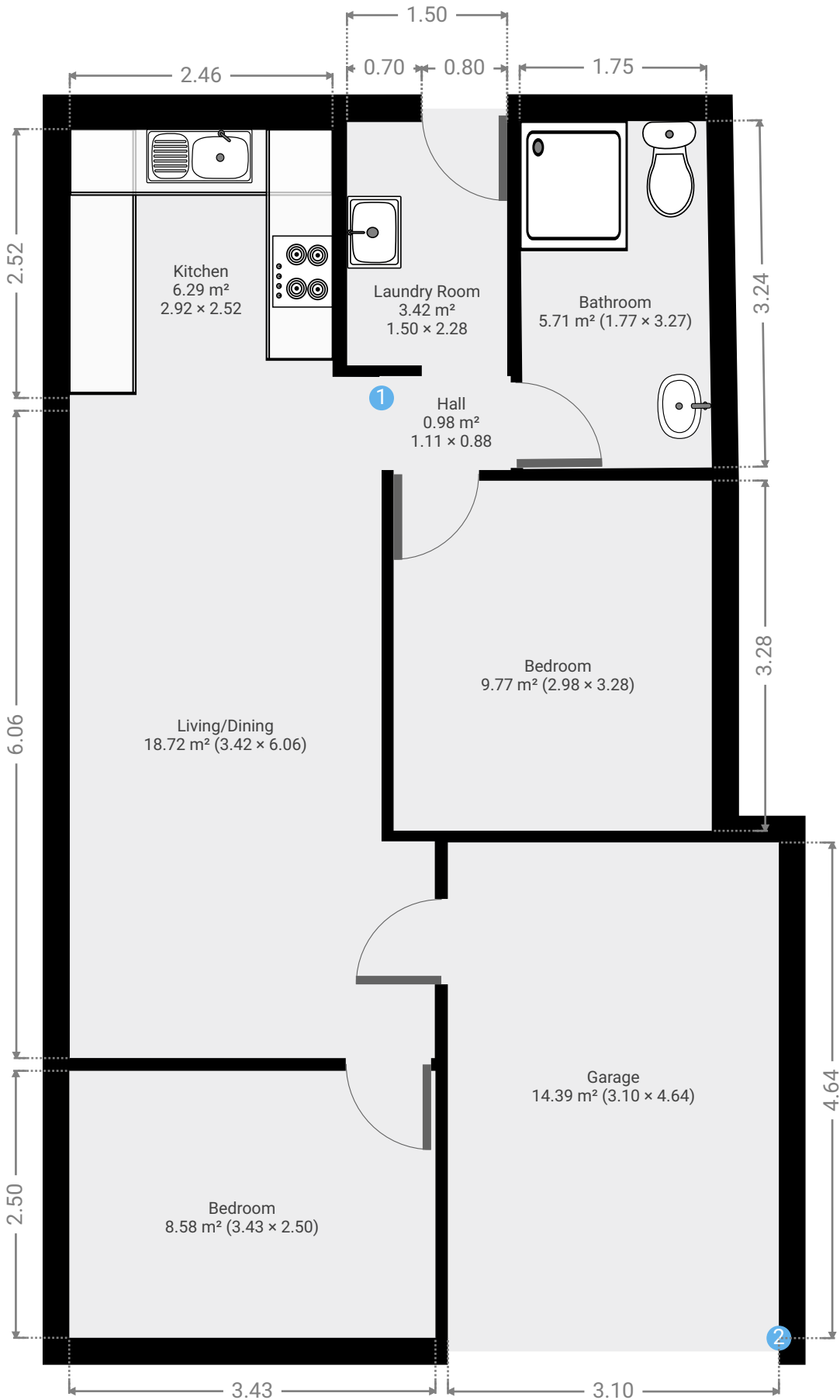
---

**Floors**

1

---

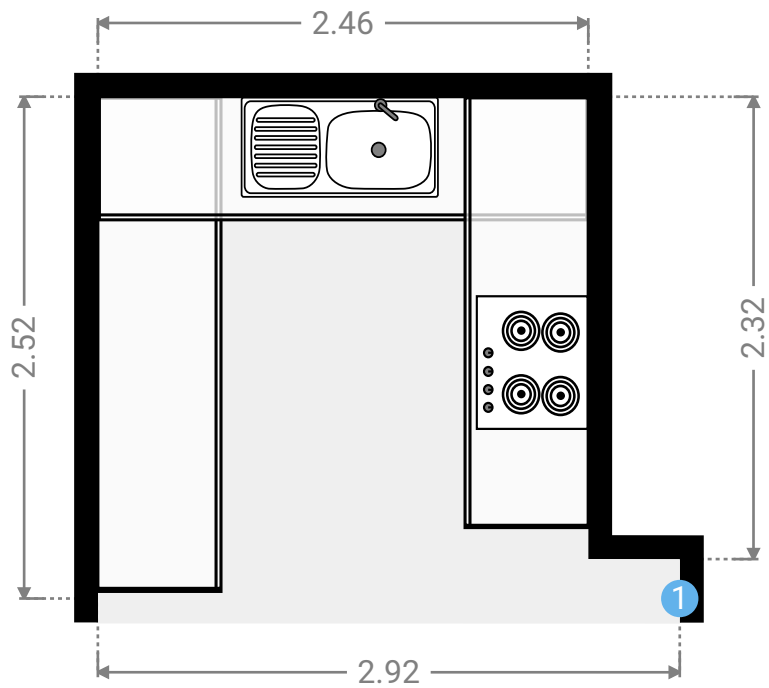
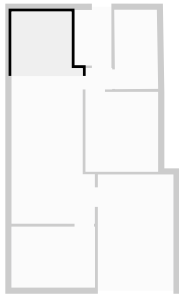
▼ Ground Floor



FLOORS: 1

▼ Kitchen  
Ground Floor

WIDTH: 2.92 m • LENGTH: 2.52 m  
AREA: 6.29 m<sup>2</sup> • PERIMETER: 10.88 m



▼ Kitchen/Ground Floor

1 OPENING

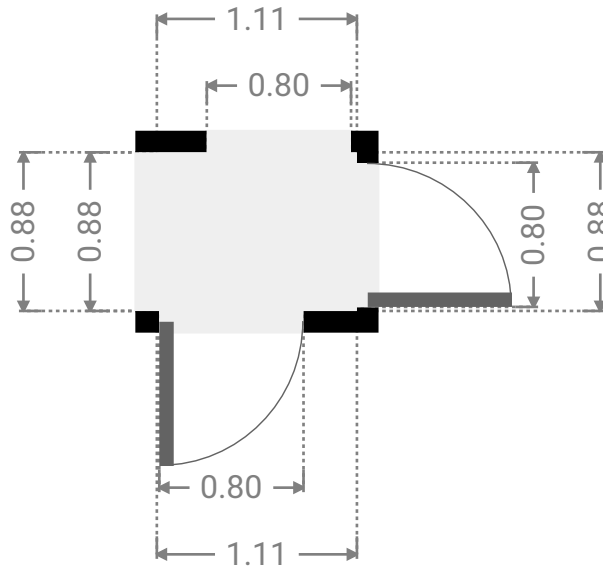
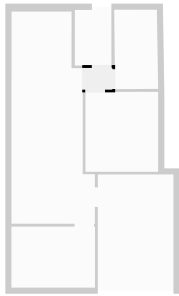
Height  
0.00 m



FLOORS: 1

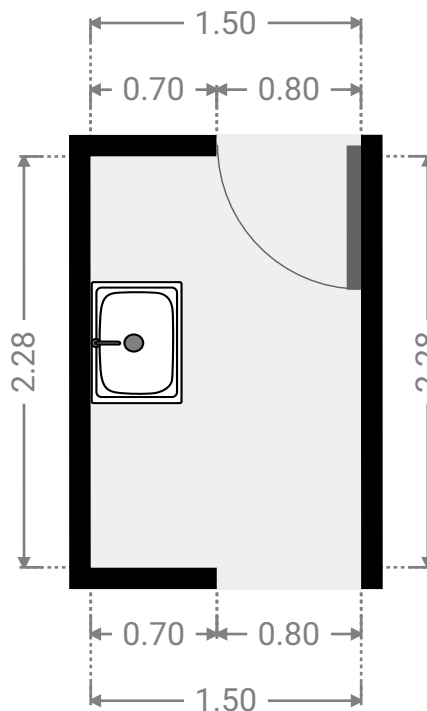
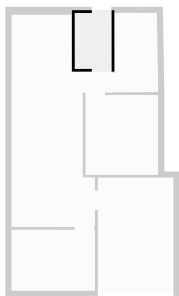
▼ **Hall**  
Ground Floor

WIDTH: 1.11 m • LENGTH: 0.88 m  
AREA: 0.98 m<sup>2</sup> • PERIMETER: 3.98 m



▼ **Laundry Room**  
Ground Floor

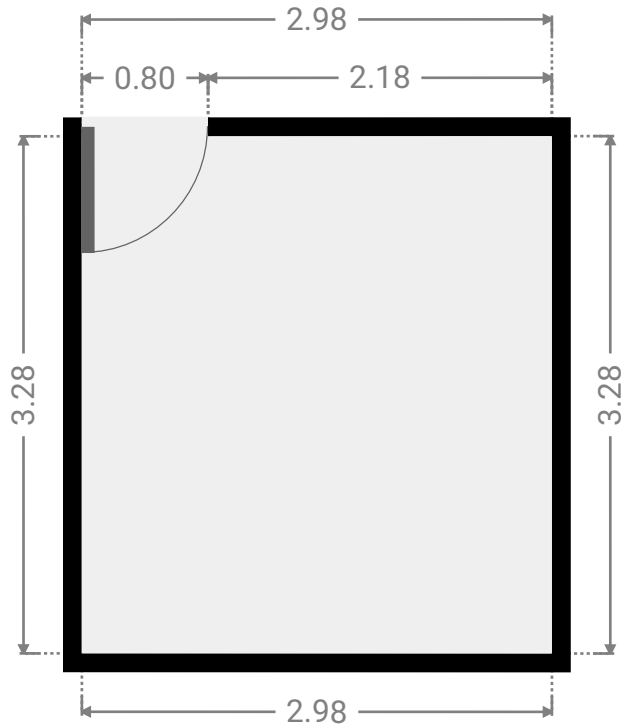
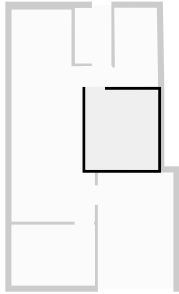
WIDTH: 1.50 m • LENGTH: 2.28 m  
AREA: 3.42 m<sup>2</sup> • PERIMETER: 7.56 m



FLOORS: 1

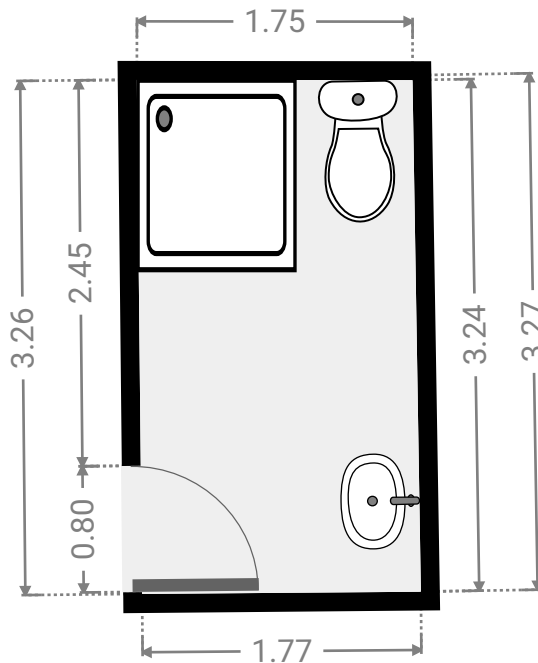
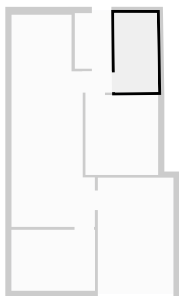
▼ **Bedroom**  
Ground Floor

WIDTH: 2.98 m • LENGTH: 3.28 m  
AREA: 9.77 m<sup>2</sup> • PERIMETER: 12.52 m



▼ **Bathroom**  
Ground Floor

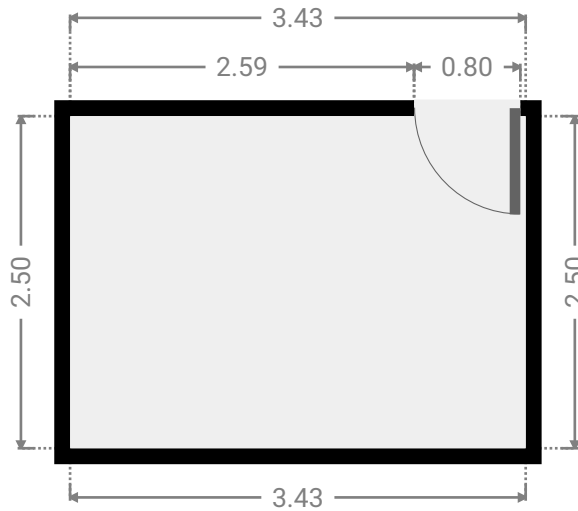
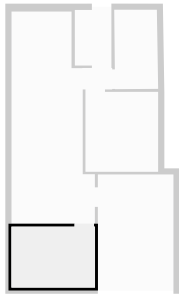
WIDTH: 1.77 m • LENGTH: 3.27 m  
AREA: 5.71 m<sup>2</sup> • PERIMETER: 10.02 m



FLOORS: 1

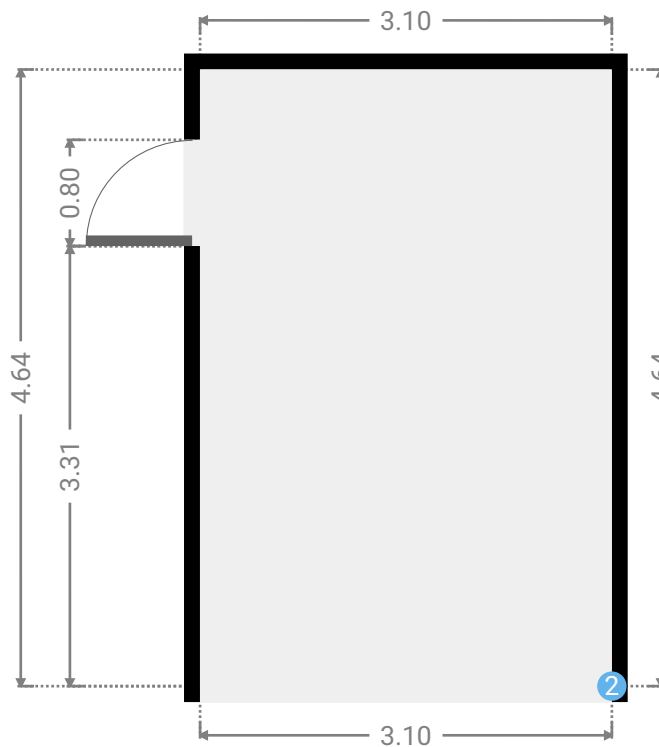
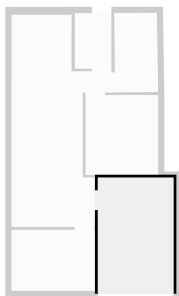
▼ **Bedroom**  
Ground Floor

WIDTH: 3.43 m • LENGTH: 2.50 m  
AREA: 8.58 m<sup>2</sup> • PERIMETER: 11.86 m



▼ **Garage**  
Ground Floor

WIDTH: 3.10 m • LENGTH: 4.64 m  
AREA: 14.39 m<sup>2</sup> • PERIMETER: 15.48 m



## ▼ Garage/Ground Floor

---

### 2 OPENING

Height  
0.00 m



▼ **Living/Dining**  
Ground Floor

WIDTH: 3.42 m • LENGTH: 6.06 m  
AREA: 18.72 m<sup>2</sup> • PERIMETER: 18.96 m

